

## $\alpha\beta$ T-cell receptors from multiple sclerosis brain lesions show MAIT cell-related features

Kathrin Held, Latika Bhonsle-Deeng, Katherina Siewert, Wakiro Sato, Eduardo Beltrán, Stephan Schmidt, Geraldine Rühl, Judy Ng, Peter Engerer, Markus Moser, et al.

► **To cite this version:**

Kathrin Held, Latika Bhonsle-Deeng, Katherina Siewert, Wakiro Sato, Eduardo Beltrán, et al..  $\alpha\beta$  T-cell receptors from multiple sclerosis brain lesions show MAIT cell-related features. *Neurology Neuroimmunology & Neuroinflammation*, American Academy of neurology, 2015, 2 (4), pp.e107. 10.1212/NXI.000000000000107 . inserm-02146588

**HAL Id: inserm-02146588**

**<https://www.hal.inserm.fr/inserm-02146588>**

Submitted on 4 Jun 2019

**HAL** is a multi-disciplinary open access archive for the deposit and dissemination of scientific research documents, whether they are published or not. The documents may come from teaching and research institutions in France or abroad, or from public or private research centers.

L'archive ouverte pluridisciplinaire **HAL**, est destinée au dépôt et à la diffusion de documents scientifiques de niveau recherche, publiés ou non, émanant des établissements d'enseignement et de recherche français ou étrangers, des laboratoires publics ou privés.

# $\alpha\beta$ T-cell receptors from multiple sclerosis brain lesions show MAIT cell–related features

OPEN

Kathrin Held, PhD  
Latika Bhonsle-Deeng,  
PhD  
Katherina Siewert, PhD  
Wakiro Sato, MD  
Eduardo Beltrán, PhD  
Stephan Schmidt, MD  
Geraldine Rühl, MSc  
Judy K.M. Ng, PhD  
Peter Engerer, MSc  
Markus Moser, PhD  
Wolfgang E.F. Klinkert,  
PhD  
Holger Babbe, PhD  
Thomas Misgeld, MD  
Hartmut Wekerle, MD  
David-Axel Laplaud, MD  
Reinhard Hohlfeld, MD  
Klaus Dornmair, PhD

Correspondence to  
Dr. Dornmair:  
Klaus.Dornmair@med.  
uni-muenchen.de

Supplemental data  
at [Neurology.org/nn](https://www.neurology.org/nn)

## ABSTRACT

**Objectives:** To characterize phenotypes of T cells that accumulated in multiple sclerosis (MS) lesions, to compare the lesional T-cell receptor (TCR) repertoire of T-cell subsets to peripheral blood, and to identify paired  $\alpha$  and  $\beta$  chains from single CD8<sup>+</sup> T cells from an index patient who we followed for 18 years.

**Methods:** We combined immunohistochemistry, laser microdissection, and single-cell multiplex PCR to characterize T-cell subtypes and identify paired TCR $\alpha$  and TCR $\beta$  chains from individual brain-infiltrating T cells in frozen brain sections. The lesional and peripheral TCR repertoires were analyzed by pyrosequencing.

**Results:** We found that a TCR V $\beta$ 1<sup>+</sup> T-cell population that was strikingly expanded in active brain lesions at clinical onset comprises several subclones expressing distinct yet closely related V $\alpha$ 7.2<sup>+</sup>  $\alpha$  chains, including a canonical V $\alpha$ 7.2-J $\alpha$ 33 chain of mucosal-associated invariant T (MAIT) cells. Three other  $\alpha$  chains bear striking similarities in their antigen-recognizing, hypervariable complementarity determining region 3. Longitudinal repertoire studies revealed that the TCR chains that were massively expanded in brain at onset persisted for several years in blood or CSF but subsequently disappeared except for the canonical V $\alpha$ 7.2<sup>+</sup> MAIT cell and a few other TCR sequences that were still detectable in blood after 18 years.

**Conclusions:** Our observation that a massively expanded TCR V $\beta$ 1-J $\beta$ 2.3 chain paired with distinct yet closely related canonical or atypical MAIT cell-related  $\alpha$  chains strongly points to an antigen-driven process in early active MS brain lesions. *Neurol Neuroimmunol Neuroinflamm* 2015;2:e107; doi: 10.1212/NXI.000000000000107

## GLOSSARY

**CDR** = complementarity determining region; **FITC** = fluorescein isothiocyanate; **MAIT** = mucosal-associated invariant T; **MR1** = MHC-related molecule 1; **MS** = multiple sclerosis; **PBMC** = peripheral blood mononuclear cell; **PBS** = phosphate-buffered saline; **TCR** = T-cell receptor.

CNS-invasive, presumably autoreactive T cells are believed to play a central role in the pathogenesis of multiple sclerosis (MS).<sup>1–3</sup> In parenchymal MS brain infiltrates, CD8<sup>+</sup> T cells are more frequent than CD4<sup>+</sup> T cells.<sup>4–7</sup> Furthermore, CNS-infiltrating CD8<sup>+</sup> T cells are oligoclonal,<sup>6–10</sup> whereas CD4<sup>+</sup> T-cell infiltrates tend to be more polyclonal.<sup>6</sup> Some CD8<sup>+</sup> T-cell clones were shown to be expanded not only in the brain but also in CSF and blood, where they may persist for years.<sup>6</sup>

For technical reasons, most previous studies of the T-cell receptor (TCR) repertoire were limited to the  $\beta$  chain. However, the antigen-specific TCR is an  $\alpha\beta$  heterodimer, and both chains contribute to antigen recognition. Here we used immunohistochemistry, laser microdissection,

From the Institute of Clinical Neuroimmunology (K.H., L.B.-D., K.S., W.S., E.B., G.R., J.K.M.N., R.H., K.D.), Ludwig-Maximilians University, Munich, Germany; Neurologische Gemeinschaftspraxis (S.S.), Gesundheitszentrum St. Johannes Hospital, Bonn, Germany; Institute of Neuronal Cell Biology (P.E., T.M.), TU Munich, Munich, Germany; Department for Molecular Medicine (M.M.), Max-Planck-Institute of Biochemistry, Martinsried, Germany; Department for Neuroimmunology (W.E.F.K., H.W.), Max-Planck-Institute of Neurobiology, Martinsried, Germany; Department of Genetics (H.B.), Harvard Medical School, Boston, MA; Munich Cluster for Systems Neurology (SyNergy) (T.M., H.W., R.H., K.D.), Munich, Germany; German Center for Neurodegenerative Diseases (DZNE) and Center for Integrated Protein Science (CIPSM) (T.M.), Munich, Germany; and INSERM, UMR 1064 (D.A.L.), Nantes, France.

Funding information and disclosures are provided at the end of the article. Go to [Neurology.org/nn](https://www.neurology.org/nn) for full disclosure forms. The Article Processing Charge was paid by Hospital of the Universität Munich-Großhadern.

This is an open access article distributed under the terms of the Creative Commons Attribution-Noncommercial No Derivative 4.0 License, which permits downloading and sharing the work provided it is properly cited. The work cannot be changed in any way or used commercially.

and single-cell multiplex PCR<sup>11</sup> to identify paired  $\alpha\beta$  TCRs from brain-infiltrating CD8<sup>+</sup> T cells present in an early active lesion from “patient A,”<sup>6</sup> whom we have followed for 18 years. We found that a clonally expanded and persisting V $\beta$ 1-J $\beta$ 2.3 chain pairs with several distinct yet closely related V $\alpha$ 7.2<sup>+</sup>  $\alpha$  chains. It is intriguing that one of the newly identified TCR  $\alpha$  chains is characteristic for mucosal-associated invariant T (MAIT) cells, and 3 other  $\alpha$  chains are highly homologous. MAIT cells are an innate-like T-cell subset with limited TCR variability<sup>12</sup> that express the TCR V $\alpha$ 7.2 element and the natural killer cell marker CD161<sup>13–16</sup> and are restricted by the MHC-related molecule 1 (MR1).<sup>17</sup> MAIT cells are a heterogeneous, semi-invariant T-cell population, with most cells carrying a “canonical” TCR  $\alpha$  chain defined by the usage of V $\alpha$ 7.2 and J $\alpha$ 33 and some cells carrying a “noncanonical” TCR  $\alpha$  chain in which J $\alpha$ 33 is replaced by J $\alpha$ 12 or J $\alpha$ 20.<sup>15</sup> Their development depends on gut microbiota, and they are thought to play a role in defense against various microorganisms.<sup>17–19</sup> Because we found not only canonical MAIT  $\alpha$  chains but also different, though homologous,  $\alpha$  chains pairing with one  $\beta$  chain, our results illustrate the complexity of the CD8<sup>+</sup> T-cell repertoire.

**METHODS** **Standard protocol approvals, registrations, and patient consents.** Written consent from patient A was obtained according to the Declaration of Helsinki. The study was approved by the ethics committee of the medical faculty of the LMU Munich.

**Patient A.** The male patient A initially presented with left-sided hemianopia in 1996. His initial cranial MRI showed a large right temporo-occipital white matter lesion, raising suspicion of malignant glioma.<sup>5</sup> Two weeks after onset of his clinical symptoms, the brain lesion was neurosurgically resected. Histopathology showed an inflammatory demyelinating lesion consistent with MS. Subsequently he had a typical relapsing-remitting course of MS. He has been continuously treated with interferon- $\beta$ -1a IM from the time of his third relapse in 1998 until submission of this manuscript. Figure e-1 at [Neurology.org/nn](http://Neurology.org/nn) gives an overview of the course of experiments. Blood samples for this study were taken in 2003, 2005, 2013, and 2014. Written consent was obtained from the donor.

**Immunohistochemistry.** The resected brain tissue was immediately frozen in liquid nitrogen and stored at  $-80^{\circ}\text{C}$  until further use. Frozen sections of 10  $\mu\text{m}$  were cut, mounted on positively charged slides (Superfrost Plus, Menzel, Braunschweig, Germany) for immunohistochemistry or on membrane-covered PET slides (Zeiss, Jena, Germany) for laser capture microscopy, and directly stored at  $-20^{\circ}\text{C}$  or  $-80^{\circ}\text{C}$ , respectively. Immunohistochemistry and microdissection was applied to

tissue regions that contain lesions with high numbers of CD8<sup>+</sup> T cells.

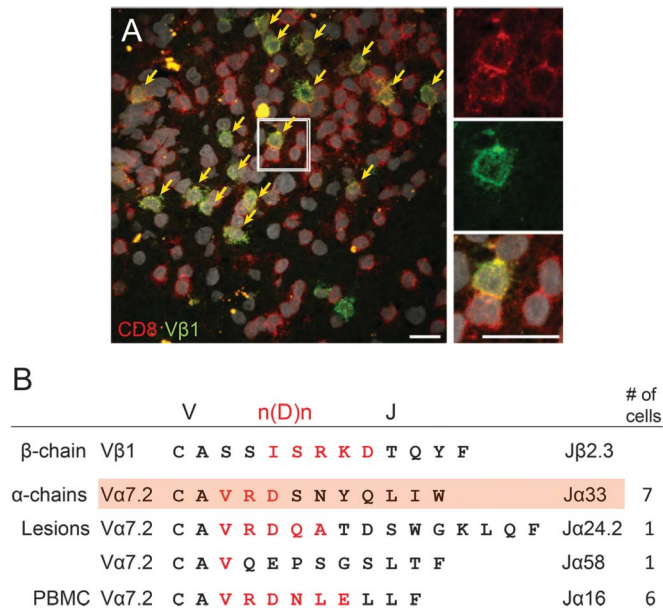
To characterize T-cell infiltrates in sections of MS brain, the following antibodies against cell surface molecules were used: mouse anti-human CD161 (1:5, 191B8, Miltenyi Biotec, Bergisch Gladbach, Germany), mouse anti-human V $\alpha$ 7.2 (1:5, 3C10, BioLegend, San Diego, CA), mouse anti-human CD8 $\alpha$  (1:50, LT8, AbD Serotec, Kidlington, UK; labeled with the Cy3 MAb labeling kit, GE Healthcare, Freiburg, Germany), rabbit anti-human CCR7 (1:800, Y59, Abcam, Cambridge, UK), mouse anti-human CD45RA (1:250, HI100, BioLegend), mouse anti-human CD45RO (1:250, UCHL1, BioLegend), fluorescein isothiocyanate (FITC)-labeled mouse anti-human V $\beta$ 1 (1:100, BL37.2, Beckman Coulter, Brea, CA), rabbit anti-human CD3 (1:500, Dako, Glostrup, Denmark), and Alexa Fluor 488-conjugated mouse anti-human CD4 (1:50, RPA-T4, eBioscience, San Diego, CA). Frozen sections of CNS were thawed at room temperature, fixed in acetone, rehydrated in phosphate-buffered saline (PBS), and blocked with 2% bovine serum albumin in PBS. For staining with anti-V $\alpha$ 7.2 and anti-CD161 antibodies, samples were fixed in 4% paraformaldehyde for 10 minutes. Sections were then incubated for 1 hour with the primary antibodies at room temperature and subsequently—in cases where the primary antibody was not directly conjugated to a detectable fluorophore—the bound primary antibody was detected using a secondary Alexa Fluor 488-labeled goat anti-mouse IgG antibody (1:1,000, Life Technologies, Carlsbad, CA). For double staining of V $\alpha$ 7.2 and CD161, an Alexa Fluor 568-labeled goat anti-mouse IgG1 or an Alexa Fluor 488-labeled goat anti-mouse IgG2a antibody (1:1,000, Life Technologies) was used, respectively. If a FITC-labeled primary antibody was used, the signal was enhanced using an anti-FITC Alexa Fluor 488-conjugated secondary antibody (1:100, Life Technologies). For dual stainings with anti-CD8 $\alpha$ , the Cy3-labeled anti-CD8 $\alpha$  antibody was applied last. Slides were mounted using fluorescent mounting medium (Dako). Staining was visualized using an Olympus FV 1000 confocal microscope with a 40 $\times$  water 1.15 NA objective or a Zeiss Axioplan 2 microscope.

**Isolation of T cells from peripheral blood mononuclear cells.** Peripheral blood mononuclear cells (PBMCs) were isolated from ethylenediaminetetraacetic acid blood in 2003 by standard-density centrifugation using Percoll (Pan-Biotech, Aidenbach, Germany) and double stained with mouse anti-human V $\beta$ 1 (clone BL37.2) and CD8<sup>+</sup> (clone LT8). CD8<sup>+</sup>V $\beta$ 1<sup>+</sup> double-positive T cells were sorted using a BD FACSVantage SE flow cytometer and analyzed by single-cell PCR. Cells were either sorted directly into PCR tubes or obtained as bulk and then isolated by hand under a microscope. CD8<sup>+</sup> T cells from 2003 to 2005 were analyzed by complementarity determining region (CDR) 3 spectratyping, as described previously.<sup>6</sup>

To isolate MAIT cells from PBMCs in 2013 and 2014, T cells were negatively isolated using the pan T-cell isolation kit (Miltenyi Biotec) and subsequently stained with the FITC-labeled mouse anti-human V $\alpha$ 7.2 (1:20, 3C10, BioLegend) and the allophycocyanin-labeled mouse anti-human CD161 (1:10, 191B8, Miltenyi Biotec) antibodies at  $4^{\circ}\text{C}$  for 30 minutes. Cells were then sorted using a BD FACSAriaTM2 flow cytometer.  $5 \times 10^2$  CD161<sup>+</sup>V $\alpha$ 7.2<sup>+</sup> cells,  $6 \times 10^3$  CD161<sup>-</sup>V $\alpha$ 7.2<sup>+</sup> cells,  $1 \times 10^5$  CD161<sup>+</sup> cells, and  $2 \times 10^5$  CD161<sup>-</sup> cells were collected. CD4<sup>+</sup> and CD8<sup>+</sup> T cells were positively isolated from PBMCs in 2013 and 2014 using magnetic beads (Miltenyi Biotec).

**Laser microdissection and single-cell PCR.** Single V $\beta$ 1<sup>+</sup>CD8 $\alpha$ <sup>+</sup> T cells were isolated by microdissection as described,<sup>7</sup> with the

**Figure 1** Expanded Vβ1 chain pairs with MAIT cell-related α chains



(A) Cluster of expanded Vβ1<sup>+</sup> T cells within multiple sclerosis (MS) lesions. Immunohistochemistry for the expanded and persisting Vβ1 clone (green) in clusters of CD8<sup>+</sup> T cells (red) in parenchymal MS lesions. Several such clusters were observed. Only very few scattered CD8<sup>+</sup>Vβ1<sup>+</sup> T cells could be identified in the brain lesion. Nuclei are visualized with 4',6-diamidino-2-phenylindole (white). Scale bar 20 μm. (B) Sequences of paired T-cell receptor (TCR) α and β chains. Single sorted or laser microdissected Vβ1<sup>+</sup>CD8<sup>+</sup> T cells from peripheral blood or brain sections were submitted to single-cell TCR PCR to identify Vβ1 chains and all possible matching α chains. The V, n(D)n, and J regions are indicated. Amino acids encoded by n(D)n nucleotides are printed in red. The expanded Vβ1-Jβ2.3 β chain (upper line) was found to pair with 4 different α chains. Three α chains were identified from brain lesions, and 1 α chain was found in blood. The α chains expressing the Jα33 (second line) and Jα16 (fifth line) elements were identified in 7 and 6 independent cells, respectively. All α chains share the Vα7.2 element, and even though they do not share the same Jα element, they all show homologous complementarity determining region 3α regions with a conserved valine (V) followed by a positively charged arginine (R) (with only one clone showing a glutamine [Q]), a negatively charged amino acid (D/E), and a relatively large hydrophilic amino acid. One of the α chains (highlighted in red) is the mucosal-associated invariant T (MAIT) cell canonical TCR Vα7.2-CAXXDSNYQLIW-Jα33 chain with 2 N nucleotide-encoded amino acids between Vα7.2 and Jα33 (here VR). The other clones with Jα16, Jα24.1, and Jα58 chains are atypical for MAIT cells, which usually carry Jα33, Jα20, or Jα12. PBMC = peripheral blood mononuclear cell.

exception that we replaced the anti-Vβ5 antibody with the anti-Vβ1 antibody BL37.2. TCRs of single Vβ1<sup>+</sup>CD8α<sup>+</sup> cells obtained by microdissection or by flow cytometry were analyzed by reverse transcription PCR as described.<sup>11</sup> PCR products were separated using a 2% agarose gel, and promising bands were excised and submitted to sequencing after isolation of DNA by the MinElute Gel Extraction Kit (Qiagen, Hilden, Germany). Throughout this manuscript, the nomenclature according to Arden et al.<sup>20</sup> is used for the TCR V region.

**Next-generation sequencing.** For the analysis of the Vα7.2 chains, RNA was isolated from sorted cells using Trizol (Life Technologies), and complementary DNA was transcribed using the Qiagen One Step RT-PCR Kit (Qiagen). Two rounds of nested PCR were performed using the primers TRAV1-2-for-out, Cα-rev-out, TRAV1-2-for-in, and Cα-rev-in.<sup>11</sup> The inner primers were extended for tags CS1 and CS2, barcodes MIDXX, and 454Ti-A and 454Ti-B adaptors according to the Access Array System 454 user guide (Fluidigm, San Francisco, CA). Samples were pooled in equimolar concentrations.

The library for sequencing all TCR β chains was prepared using 5'-RACE (Clontech, Mountain View, CA), with the gene-specific primers in the constant region CBRT<sup>11</sup> (20 μM) and the 5' adaptor (10 μM; 5'-AAGCAGTGGTATCAACGCAGAG-TACTCTT(rG)53'). This was followed by 2 nested PCRs for 20 cycles, each for 20 seconds at 94°C, 20 seconds at 60°C, and 50 seconds at 72°C using gene-specific reverse primers Cβ-mid and Cβ-in.<sup>21</sup> Cβ-in was extended for barcodes and the adaptor 454Ti-B. As forward primers we used the step-out primers sa1: CTAATACGACTCACTATAGGGCAAGCAGTGGTATCAACGCAG; sa2: 454TiA\_MIDXX\_CTAATACGACTCACTATAGGGC. PCR products were excised from agarose gels, purified by the MinElute Kit (Qiagen), and pooled in equimolar concentrations. Quality control of the libraries and sequencing on a Roche 454 GS FLX+ platform (Roche, Basel, Switzerland) was then carried out at IGM Laboratories GmbH, Martinsried, Germany.

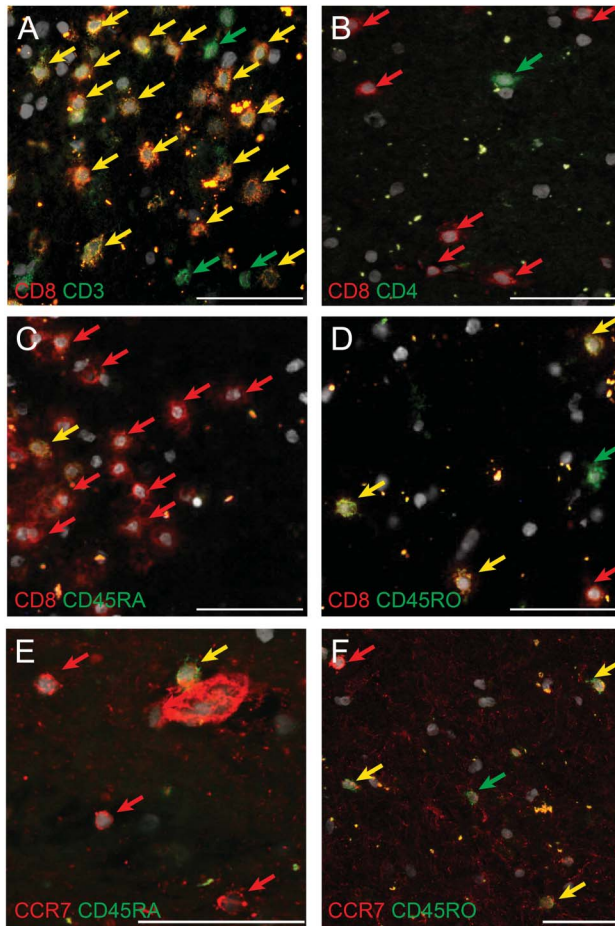
We obtained a total of 183,291 TCRα reads and 182,245 TCRβ reads, which were analyzed using the IMG/HighV QUEST platform.<sup>22</sup> We selected for in-frame sequences that contained the complete CDR3 region with clearly distinguishable V and J genes only. Thereby we obtained 46,682 and 46,133 readable TCRα and TCRβ chains, respectively.

**RESULTS Vβ1<sup>+</sup> T cells accumulate in inflammatory foci and pair with MAIT cell-related α chains.** It was known that in patient A a particular T-cell clone expressing the Vβ1-Jβ2.3 TCRβ chain was expanded in brain lesions and persisted in peripheral blood and CSF between 1996 and 2003.<sup>5,6</sup> Immunohistochemistry revealed clusters of Vβ1<sup>+</sup>CD8<sup>+</sup> cells within the CNS (figure 1A). In some of these clusters, up to 38% of all CD8<sup>+</sup> T cells coexpressed the Vβ1 chain together with CD8α. This observation links the clonal T-cell expansions initially detected by CDR3 spectratyping to morphologically identifiable accumulations of T cells.

To identify the TCRα chain associated with the expanded Vβ1-Jβ2.3 chain, we double stained brain sections of the 1996 tissue for CD8α and Vβ1 and isolated single CD8α<sup>+</sup>Vβ1<sup>+</sup> T cells by laser microdissection from brain sections (figure e-2A). In parallel, we isolated single peripheral blood CD8α<sup>+</sup>Vβ1<sup>+</sup> T cells obtained in 2003 by flow cytometry (figure e-2B). To distinguish probable antigen-experienced Vβ1-Jβ2.3<sup>+</sup> T cells from bystanders, we tested all Vβ1<sup>+</sup> cells for their n(D)n-J sequences. For cells that expressed the expanded and persisting sequence Vβ1-IGRKD-Jβ2.3 (figure 1B), we analyzed the matching α chain by multiplex PCR.<sup>11</sup> We identified 15 α chains that paired with the Vβ1-Jβ2.3 chain. One T-cell clone was found 7 times in brain, and another clone was found 6 times in blood (figure 1B). All α chains share the Vα7.2 element, and even though they do not share the same Jα element, they all show homologous CDR3α regions with the consensus sequence valine, arginine (one clone: glutamine), aspartic or glutamic acid, and a medium size hydrophilic amino acid. Of note, 5 of 6 CDR loops of the 4 αβ heterodimers are identical because all clones



**Figure 2** Brain-infiltrating immune cells mainly consist of CD8<sup>+</sup> memory T cells



Immunofluorescence staining of brain-infiltrating immune cells. All nuclei are stained with 4',6-diamidino-2-phenylindole (white). Green and red dyes were used. Double-positive cells are therefore shown in yellow. Scale bars 50  $\mu$ m. (A) Double staining for CD3 (green) and CD8 $\alpha$  (red). Most CD3<sup>+</sup> T cells coexpress CD8 $\alpha$ . (B) CD8<sup>+</sup> (red) T cells outnumber CD4<sup>+</sup> (green) T cells. (C) Low numbers of CD45RA<sup>+</sup> (green) CD8<sup>+</sup> (red) double-positive T cells in multiple sclerosis (MS) brain tissue. (D) Many CD8<sup>+</sup> T cells (red) coexpress CD45RO (green). (E) Naive T cells double-positive for CCR7 (red) and CD45RA (green) are mostly found within blood vessels and are barely detectable in the parenchyma of MS CNS. (F) Effector memory (CD45RO<sup>+</sup>CCR7<sup>-</sup>) (green arrow) and central memory (CD45RO<sup>+</sup>CCR7<sup>+</sup>) (yellow arrow) T cells in MS lesions.

share the identical  $\beta$  chain and the V $\alpha$ 7.2 variable element. The common motif in the CDR3 loop of the  $\alpha$  chains therefore hints at related antigens. Strikingly, one of the  $\alpha$  chains identified from microdissected brain-infiltrating CD8<sup>+</sup> T cells represents a canonical MAIT cell  $\alpha$  chain that contains 2 N amino acids (X) in the CDR3 $\alpha$  loop (CAXXDSNYQLIW) and the J $\alpha$ 33 element.<sup>12,15</sup> Thus, the expanded, dominant, and persisting V $\beta$ 1 chain found in earlier studies<sup>5,6</sup> pairs with several distinct yet related V $\alpha$ 7.2<sup>+</sup>  $\alpha$  chains.

**Tissue-invading cells in early active lesions mostly show a CD8<sup>+</sup> memory phenotype.** The immune cell infiltrates in lesions were dominated by CD8<sup>+</sup> T cells. Four hundred twenty of 503 (84%) examined tissue-infiltrating parenchymal CD3<sup>+</sup> T cells expressed

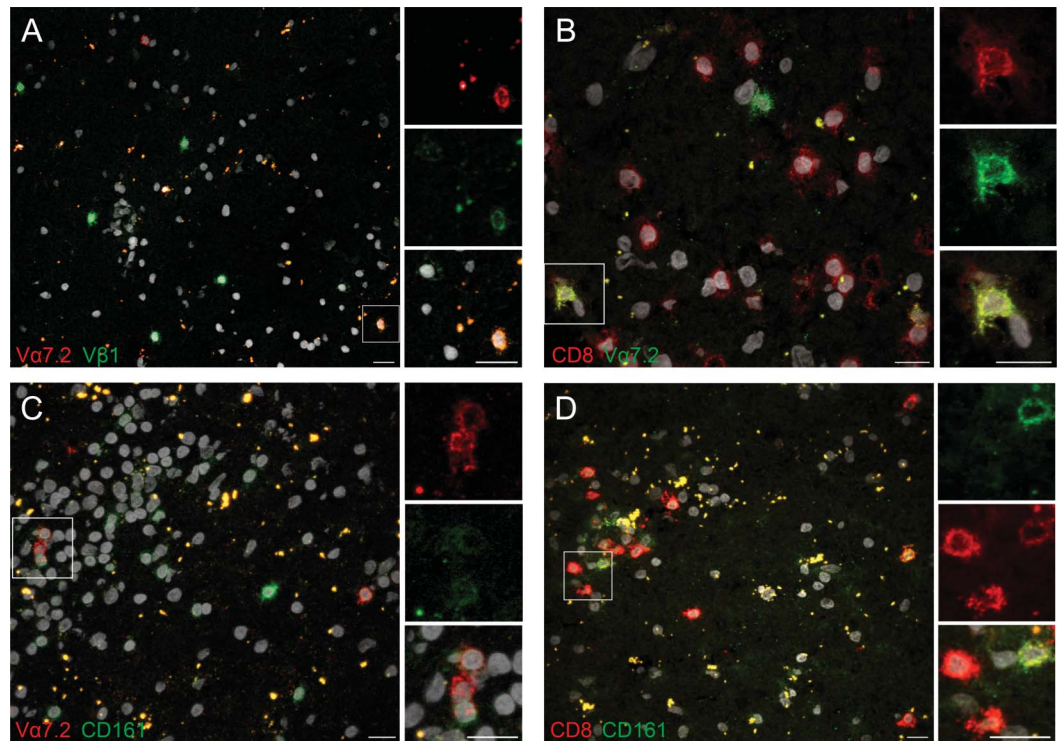
CD8 $\alpha$  (figure 2A). The parenchymal CD4:CD8 ratio was 1:8 (figure 2B). Expression of the naive T-cell marker CD45RA was found on only 11% of tissue-infiltrating CD8 $\alpha$ <sup>+</sup> cells (figure 2C), whereas 84% expressed the memory marker CD45RO (figure 2D). Of all parenchymal CD8 $\alpha$ <sup>+</sup> cells, 60% coexpressed the homing receptor CCR7. Double staining of CCR7 together with CD45RA or CD45RO revealed the following phenotypes in decreasing frequency: central memory (CD45RO<sup>+</sup>CCR7<sup>+</sup>), effector memory (CD45RO<sup>+</sup>CCR7<sup>-</sup>), and naive T cells (CD45RA<sup>+</sup>CCR7<sup>+</sup>), which accounted for only 6% of all CCR7<sup>+</sup> cells (figure 2E). Sixty-five percent of CCR7<sup>+</sup> cells coexpress CD45RO, and 62% of all CD45RO<sup>+</sup> cells express CCR7 (figure 2F). Thus, the brain-infiltrating T cells predominantly show a CD8 $\alpha$ <sup>+</sup>CD45RO<sup>+</sup>CCR7<sup>+</sup> central memory or CD8 $\alpha$ <sup>+</sup>CD45RO<sup>+</sup>CCR7<sup>-</sup> effector memory phenotype.

**MAIT cells are detected in parenchymal MS lesions.** To investigate phenotypic features of the MAIT-related cells, we stained brain sections for the expanded V $\beta$ 1<sup>+</sup> TCR $\beta$  chain and MAIT cell-associated markers V $\alpha$ 7.2, CD161, and CD8 $\alpha$ . Forty-two percent of the parenchymal V $\alpha$ 7.2<sup>+</sup> cells coexpressed V $\beta$ 1; however, only 13% of V $\beta$ 1<sup>+</sup> T cells expressed V $\alpha$ 7.2 (figure 3A). Seventy percent of the V $\alpha$ 7.2<sup>+</sup> cells also expressed CD8 $\alpha$  (figure 3B), and 69% of V $\alpha$ 7.2<sup>+</sup> cells coexpressed CD161 (figure 3C), identifying them as MAIT cells.<sup>13</sup> Of all CD161<sup>+</sup>V $\alpha$ 7.2<sup>+</sup> MAIT cells, 74% were found in the brain parenchyma. Comparing the number of parenchymal CD161<sup>+</sup>V $\alpha$ 7.2<sup>+</sup> cells to the total number of parenchymal CD8 $\alpha$ <sup>+</sup> cells in consecutive sections, we found that only about 1% of all CD8 $\alpha$ <sup>+</sup> cells belong to the CD161<sup>+</sup>V $\alpha$ 7.2<sup>+</sup> MAIT cell subset. However, CD161 was found on 21% of CD8 $\alpha$ <sup>+</sup> T cells. Conversely, about 80% of the CD161-expressing cells were CD8 $\alpha$ <sup>+</sup> (figure 3D). Furthermore, about 80% of V $\beta$ 1<sup>+</sup> T cells expressed CD161<sup>+</sup> (data not shown). This underlines the fact that many of the CD161<sup>+</sup> cells are not MAIT cells.<sup>23</sup>

**Changes in the MAIT cell-related TCR $\alpha$  and TCR $\beta$  chain repertoire in blood between 1996 and 2014.** To follow the longitudinal development of the peripheral T-cell repertoire from 1996 to 2014 (figure e-2), we analyzed the 1996 brain sample as well as different subsets of peripheral T cells from 2013 to 2014 by pyrosequencing.

Tracking of TCR chains identified by single-cell PCR in the 1996 biopsy specimen revealed that the V $\beta$ 1-J $\beta$ 2.3 chain that was expanded in brain and blood samples from 1996, 2001, and 2003<sup>5,6</sup> was still detectable by pyrosequencing in peripheral T cells 18

**Figure 3** MAIT cells can be detected within parenchymal lesions of MS brain



Double fluorescence immunohistochemistry identifies brain-infiltrating mucosal-associated invariant T (MAIT) cells in multiple sclerosis (MS) lesions of patient A. Nuclei are stained with 4',6-diamidino-2-phenylindole (white). Green and red dyes were used. Double-positive cells are therefore shown in yellow. Scale bars 20  $\mu\text{m}$ . (A) T cells expressing the T-cell receptor  $V\alpha 7.2$  (red) and  $V\beta 1$  chains (green). This combination (see figure 1B) was identified by single-cell PCR. (B) Most  $V\alpha 7.2^+$  (green) T cells belong to the  $CD8^+$  (red) T-cell subset. (C) MAIT cells expressing  $V\alpha 7.2$  (red) and  $CD161$  (green) in the parenchyma of MS brain. (D) The vast majority of  $CD161^+$  (green) cells in MS CNS coexpress  $CD8\alpha$  (red).

years after clinical onset, but it was no longer expanded. Furthermore, the canonical  $V\alpha 7.2$ -CAVRDSNYQLIW-J $\alpha 33$  MAIT cell clone found in the 1996 brain sample by single-cell PCR was still present in the 2014  $CD161^+V\alpha 7.2^+$  MAIT PBMC subset, as found by pyrosequencing.

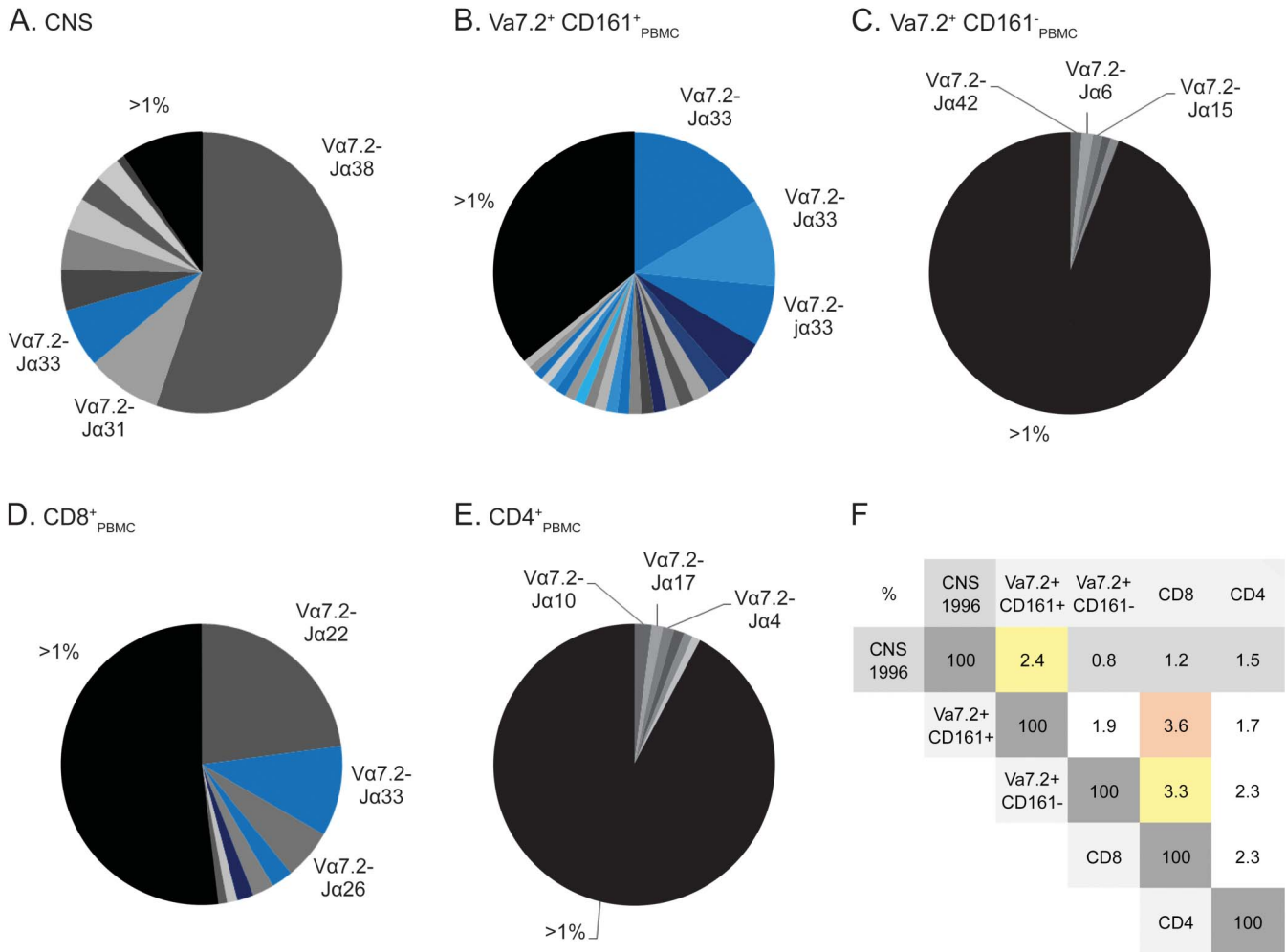
Next, we compared the CDR3 repertoires of  $V\alpha 7.2^+$  chains. We show the distribution of the N and J regions of the 1996 brain specimen in figure 4A. One of the 3 dominant clones is a canonical MAIT cell  $V\alpha 7.2$ -J $\alpha 33$  clone, although it differs from the clone found in the single cells. In peripheral blood from 2014, clonal expansions were found in only the  $CD161^+V\alpha 7.2^+$  subset, with the MAIT cell canonical and noncanonical clones dominating (blue in figure 4B). In contrast, the  $CD161^-V\alpha 7.2^+$  subset is polyclonal (figure 4C). We also detected clonal expansions including some typical sequences for MAIT cells in the entire pool of  $CD8^+$  T cells (figure 4D), whereas  $CD4^+$  T cells were polyclonal (figure 4E).

We then set out to identify distinct clones shared between these different subsets (figure 4F). Within the TCR  $V\alpha 7.2$  repertoire, several clones that were present in the 1996 brain sample can still be found in blood T cells obtained 18 years after onset, especially

in the  $CD161^+V\alpha 7.2^+$  MAIT cell subset. The greatest overlap was observed between the CNS sample and the PBMC MAIT cell sample from 2014, in which 2.4% of all sequences were identical at the amino acid level. It is notable that the canonical  $V\alpha 7.2$ -CAVRDSNYQLIW-J $\alpha 33$  sequence could also be detected in T-cell subsets other than the MAIT cells.

**DISCUSSION** For this in-depth analysis of  $CD8^+$  T cells in MS, we had the unique opportunity to investigate a patient whose initial inflammatory lesion was resected under the misdiagnosis of glioma<sup>5</sup> and whom we have been following for 18 years. By combining immunohistochemistry, laser microdissection, and single cell PCR analysis of brain-infiltrating  $V\beta 1^+J\beta 2.3^+$  cells, we show that the expanded and persistent  $V\beta 1$ - $J\beta 2.3^+$  T-cell population<sup>6</sup> comprises several distinct  $V\alpha 7.2^+$  T-cell clones, all of which bear striking similarities in their CDR3 $\alpha$  regions. In addition to a canonical MAIT cell  $V\alpha 7.2$ -J $\alpha 33$  chain, we identified 3 MAIT cell-atypical  $V\alpha 7.2$  chains with different yet related CDR3 $\alpha$  regions that form an oligoclonal spectrum of heterodimeric  $\alpha\beta$  TCRs.

**Figure 4** V $\alpha$ 7.2 TCR chain repertoire



Analysis of the T-cell receptor (TCR) V $\alpha$ 7.2 repertoire of patient A by pyrosequencing shows oligoclonal T-cell expansions in different samples. Each pie chart represents the total number of nucleotide sequences found in the V $\alpha$ 7.2 repertoire of a certain compartment and each sector represents one distinct T-cell clone. We compared (A) samples from CNS tissue from the biopsy taken in 1996, (B) V $\alpha$ 7.2<sup>+</sup>CD161<sup>+</sup> mucosal-associated invariant T (MAIT) cells, (C) V $\alpha$ 7.2<sup>+</sup>CD161<sup>-</sup> cells, (D) CD8<sup>+</sup> cells, and (E) CD4<sup>+</sup> T cells from peripheral blood taken in 2013 and 2014. For each population we list the designation of the J $\alpha$  elements and their relative percentage. Clones carrying the MAIT canonical TCR  $\alpha$  chain (CAXXDSNYQLIW) are marked in bright blue, and clones containing the noncanonical  $\alpha$  chains characterized by J $\alpha$ 12 (CAXXDSSYKLIF) and J $\alpha$ 20 (CAVXXDYKLSF) are marked in dark blue and light blue, respectively. (F) Percentages of identical complementarity determining region 3 $\alpha$  amino acid sequences within the TCR V $\alpha$ 7.2<sup>+</sup> repertoire between the different samples defined above (A-E). The numbers are percentages indicating how often a particular sequence detected in one sample was also found in another sample. The greatest overlap was between V $\alpha$ 7.2<sup>+</sup>CD161<sup>+</sup> and CD8<sup>+</sup> T cells from peripheral blood, but there was also significant overlap between the CNS sample and the V $\alpha$ 7.2<sup>+</sup>CD161<sup>+</sup> sample from 2013 to 2014, as highlighted by the red and yellow colors. PBMC = peripheral blood mononuclear cell.

Transcripts of canonical V $\alpha$ 7.2-J $\alpha$ 33 MAIT cells have been identified in MS brain autopsies,<sup>24</sup> but it remained unclear whether the MAIT cells indeed infiltrated the parenchyma. Later, phenotypically defined (CD3<sup>+</sup>CD161<sup>+</sup>V $\alpha$ 7.2<sup>+</sup> or CD8<sup>+</sup>CD161<sup>+</sup>V $\alpha$ 7.2<sup>+</sup>) bona fide MAIT cells were detected in brain and meningeal infiltrates, mostly of patients with long-standing progressive disease.<sup>25–28</sup> Consistent with these studies, we found that CD161<sup>+</sup>V $\alpha$ 7.2<sup>+</sup> MAIT cells represented only about 1% of CD8<sup>+</sup> T cells present in the brain specimen of our patient. This is lower than the typical MAIT cell frequency of 3%–10% of all T cells in blood,<sup>13,29</sup> suggesting that MAIT cells are not selectively recruited into the CNS. CD161

expression is not limited to MAIT cells,<sup>23</sup> and we found CD161 expression on 21% of all CD8<sup>+</sup> T cells in our patient's brain lesions. Furthermore, we found more CD161<sup>+</sup>V $\beta$ 1<sup>+</sup> cells than V $\alpha$ 7.2<sup>+</sup>V $\beta$ 1<sup>+</sup> T cells, indicating that most brain-infiltrating CD161<sup>+</sup>V $\beta$ 1<sup>+</sup> cells do not belong to the CD161<sup>+</sup>V $\alpha$ 7.2<sup>+</sup> MAIT cell subset. However, despite their low numbers, the brain-infiltrating V $\beta$ 1<sup>+</sup>V $\alpha$ 7.2<sup>+</sup> cells are unlikely to represent a randomly recruited bystander population. First, their clonal features strongly point to an antigen-driven process: a single strikingly expanded TCR V $\beta$ 1 chain was found to be associated with 4 different V $\alpha$ 7.2 chains that all shared highly homologous CDR3 regions. Second, the expanded V $\beta$ 1<sup>+</sup> T cells formed conspicuous



local clusters, consistent with local recognition of shared antigen(s). Third, the brain specimen was obtained at clinical disease onset and contains early active lesions, pointing to an early role of these inflammatory cells. Fourth, V $\beta$ 1-J $\beta$ 2.3<sup>+</sup> clones were still expanded in CSF and/or blood 7 years after disease onset.<sup>6</sup>

Because the MAIT TCR repertoire depends on the commensal gut microbiota<sup>17</sup> and may be shaped by microbes,<sup>19</sup> the presence of MAIT cells in MS brain would be consistent with the hypothesis of a “gut–brain axis.”<sup>30</sup> Recent evidence indicates that some MAIT cells recognize bacterial vitamin B metabolites presented by MR1,<sup>15,16,31,32</sup> but these clones express canonical N-J $\alpha$  elements and  $\beta$  chains that are very different from our V $\beta$ 1 chain. However, our brain-derived T-cell clones do not react with these metabolites nor do they recognize *Escherichia coli*-infected HeLa cells in a standard MAIT assay (unpublished observations). Another possibility is that these cells recognize conventional peptide antigens, but our efforts to identify such peptides have not been successful. A third possibility is that they might recognize other, still-unknown low-molecular-weight ligands. A recent study<sup>19</sup> showed that exposure to different microbes evoked expression of atypical J $\alpha$  and V $\beta$  elements of MAIT cells. This would be consistent with our observation that except for one clone with a canonical J $\alpha$ 33<sup>+</sup>  $\alpha$ -chain, our clones express  $\alpha$  chains with varying CDR3 $\alpha$  lengths and J $\beta$  elements that are atypical for MAIT cells. Furthermore, the J $\alpha$ 16, J $\alpha$ 24.1, and J $\alpha$ 58 chains lack the conserved Tyr 95 $\alpha$  required for MAIT cell antigen recognition,<sup>15</sup> and all 4 of our brain-derived T clones express V $\beta$ 1, which is very atypical for MAIT cells.

Our results reveal several novel features of CD8<sup>+</sup> T cells in MS. First, the complexity of the  $\alpha\beta$  TCR repertoire is far greater than could be assumed from the TCR $\beta$  chain repertoire alone. Second, the  $\alpha\beta$  TCR dimers we obtained from individual brain-infiltrating CD8<sup>+</sup> T cells show MAIT-related features. Third, the brain-infiltrating MAIT-related cells themselves are heterogeneous; they express either a public “canonical” V $\alpha$ 7.2 chain or private MAIT-atypical V $\alpha$ 7.2 chains. Fourth, although histochemical stainings indicate that the MAIT-related T cells constitute only a small fraction of the infiltrate, the striking homology of the TCR CDR3 regions of the identified panel of V $\alpha$ 7.2-V $\beta$ 1<sup>+</sup> T-cell clones points to their antigen-driven recruitment into early MS lesions. Fifth, follow-up of the peripheral TCR repertoire of the index patient by next-generation sequencing reveals that some MAIT-related TCR sequences are still detectable in blood 18 years after clinical onset. Sixth, the observation that a small yet clonally conspicuous fraction of CD8<sup>+</sup> T cells in early MS lesions consist of MAIT or MAIT-related cells

provides a hypothetical link between the brain-infiltrating T cells and the gut microbiota. Currently, the precise functional role of the brain-infiltrating MAIT cells is unknown: they could be harmful, protective, or inert. Future studies will attempt to tackle the complex interplay between the different CNS-invading T cells and their target tissue.

## AUTHOR CONTRIBUTIONS

K. Held contributed to data collection, analysis and interpretation of the data, design of the study, and drafting and writing the manuscript. L. Bhonsle-Deeng contributed to data collection, analysis and interpretation of the data, and the design of the study. K. Siewert contributed to data collection, analysis and interpretation of the data, and the design of the study. W. Sato contributed to data collection and analysis and interpretation of the data. E. Beltrán contributed to data collection, analysis and interpretation of the data, and the design of the study. S. Schmidt contributed to patient recruitment, data collection, interpretation of the data, and writing the manuscript. G. Rühl contributed to data collection and analysis and interpretation of the data. J.K.M. Ng contributed to data collection and analysis and interpretation of the data. P. Engerer contributed to confocal microscopy data collection and analysis. M. Moser contributed to data collection and analysis of the data. W.E.F. Klinkert contributed to data collection and analysis of the data. H. Babbe contributed to data collection and interpretation of the data. T. Misgeld contributed to confocal microscopy data collection and analysis. H. Wekerle contributed to study design and writing and revising the manuscript. D.A. Laplaud contributed to data collection, analysis and interpretation of the data, and design of the study. R. Hohlfeld contributed to conceiving the study and drafting and revising of the manuscript. K. Dornmair contributed to conceiving and designing the study, interpretation of the data, and drafting and revising the manuscript.

## ACKNOWLEDGMENT

The authors thank Hans Lassmann for discussion, Joachim Malotka and Ingrid Eiglmeier for expert technical assistance, Sabine Seitz for help, and Naoto Kawakami and Edgar Meinel for comments on the manuscript. The authors thank Lars Kjer-Nielsen, Jamie Rossjohn, and James McCluskey for providing the candidate MAIT cell antigens RL-6M and rRL-6HM.

## STUDY FUNDING

This work was supported by the Deutsche Forschungsgemeinschaft (Munich Cluster for Systems Neurology [EXC 1010 SyNergy], CRC-TR-128-A5, -128-A1, and -128-B8), the Deutsche Multiple Sklerose Gesellschaft (DMSG), the Fondation pour l'Aide à la Recherche sur la Sclérose en Plaques (ARSEP), the Gemeinnützige Hertie Stiftung, and the Bundesministerium für Bildung und Forschung (Kompetenznetz MS, TP B8.1). D.A.L. has been also funded by Lilly Neurosciences and the Ligue Française contre la Sclérose en Plaques (LFSEP).

## DISCLOSURE

K. Held, L. Bhonsle-Deeng, and K. Siewert report no disclosures. W. Sato received research support from Novartis. E. Beltrán reports no disclosures. S. Schmidt is on the scientific advisory board for Novartis, Merck Serono, Bayer Vital, Biogen Idec, Genzyme, and Teva; received travel funding and/or speaker honoraria from Novartis, Merck Serono, Bayer Vital, Biogen Idec, Genzyme, and Teva; and received research support from Bayer Vital. G. Rühl, J.K.M. Ng, P. Engerer, M. Moser, and W.E.F. Klinkert report no disclosures. H. Babbe is employed by Janssen Research & Development LLC and his spouse is employed by Coriell Institute for Medical Research. T. Misgeld received research support from RTG, DFG, CRC, and ERC. H. Wekerle is on the scientific advisory board for Myelin Repair Foundation, is on the editorial board for *Annals of Neurology*, and received research support from KKNMS, German Ministry of Science. D.A. Laplaud is on the scientific advisory board for Biogen Idec, Teva Pharma, Novartis, and Genzyme; received travel funding and/or speaker honoraria from Biogen Idec, Novartis, and Genzyme; is an editor for *La Presse Medicale* and coeditor for *SEP* &



*Neuroscience*; and received research support from Biogen Idec, Novartis, LFSEP, and Fondation ARSEP. R. Hohlfeld served on the scientific advisory board for Novartis, Biogen Idec, Bayer-Schering, Merck Serono, Sanofi-Aventis, and Teva; served on the data safety monitoring board for Novartis, Merck Serono, and CSL Behring; received travel funding from Novartis, Biogen Idec, Bayer-Schering, Merck Serono, Sanofi-Aventis, Teva, and Genzyme; is an editorial board member for *Neurology*, *Brain*, *Clinical and Experimental Immunology*, *Deutsche Medizinische Wochenschrift*, *Expert Opinion on Biological Therapy*, *Journal of Neuroimmunology*, *Multiple Sclerosis Journal*, *Nervenarzt*, *Practical Neurology*, *Seminars in Immunopathology*, and *Therapeutic Advances in Neurological Disorders*; received consulting fees from Novartis, Biogen Idec, Bayer-Schering, Merck Serono, Sanofi-Aventis, Teva, and Genzyme; and received research support from Novartis, Biogen Idec, Bayer-Schering, and Teva. K. Dornmair received research support from Deutsche Forschungsgemeinschaft, Deutsche Multiple Sklerose Gesellschaft, and Fondation pour l'Aide a la Recherche sur la Sclerose en Plaques (ARSEP). Go to [Neurology.org/nn](http://Neurology.org/nn) for full disclosure forms.

Received February 2, 2015. Accepted in final form March 23, 2015.

## REFERENCES

- Goverman J. Autoimmune T cell responses in the central nervous system. *Nat Rev Immunol* 2009;9:393–407.
- Sospedra M, Martin R. Immunology of multiple sclerosis. *Annu Rev Immunol* 2005;23:683–747.
- Hohlfeld R, Wekerle H. Autoimmune concepts of multiple sclerosis as a basis for selective immunotherapy: from pipe dreams to (therapeutic) pipelines. *Proc Natl Acad Sci USA* 2004;101(suppl 2):14599–14606.
- Hauser SL, Bhan AK, Gilles F, Kemp M, Kerr C, Weiner HL. Immunohistochemical analysis of the cellular infiltrate in multiple sclerosis lesions. *Ann Neurol* 1986;19:578–587.
- Babbe H, Roers A, Waisman A, et al. Clonal expansions of CD8(+) T cells dominate the T cell infiltrate in active multiple sclerosis lesions as shown by micromanipulation and single cell polymerase chain reaction. *J Exp Med* 2000;192:393–404.
- Skulina C, Schmidt S, Dornmair K, et al. Multiple sclerosis: brain-infiltrating CD8+ T cells persist as clonal expansions in the cerebrospinal fluid and blood. *Proc Natl Acad Sci USA* 2004;101:2428–2433.
- Junker A, Ivanidze J, Malotka J, et al. Multiple sclerosis: T-cell receptor expression in distinct brain regions. *Brain* 2007;130:2789–2799.
- Friese MA, Fugger L. Pathogenic CD8(+) T cells in multiple sclerosis. *Ann Neurol* 2009;66:132–141.
- Saxena A, Martin-Blondel G, Mars LT, Liblau RS. Role of CD8 T cell subsets in the pathogenesis of multiple sclerosis. *FEBS Lett* 2011;585:3758–3763.
- Montes M, Zhang X, Berthelot L, et al. Oligoclonal myelin-reactive T-cell infiltrates derived from multiple sclerosis lesions are enriched in Th17 cells. *Clin Immunol* 2009;130:133–144.
- Seitz S, Schneider CK, Malotka J, et al. Reconstitution of paired T cell receptor alpha- and beta-chains from microdissected single cells of human inflammatory tissues. *Proc Natl Acad Sci USA* 2006;103:12057–12062.
- Tilloy F, Treiner E, Park SH, et al. An invariant T cell receptor alpha chain defines a novel TAP-independent major histocompatibility complex class Ib-restricted alpha/beta T cell subpopulation in mammals. *J Exp Med* 1999;189:1907–1921.
- Martin E, Treiner E, Duban L, et al. Stepwise development of MAIT cells in mouse and human. *PLoS Biol* 2009;7:e54.
- Gold MC, Cerri S, Smyk-Pearson S, et al. Human mucosal associated invariant T cells detect bacterially infected cells. *PLoS Biol* 2010;8:e1000407.
- Reantragoon R, Corbett AJ, Sakala IG, et al. Antigen-loaded MR1 tetramers define T cell receptor heterogeneity in mucosal-associated invariant T cells. *J Exp Med* 2013;210:2305–2320.
- Lepore M, Kalinichenko A, Colone A, et al. Parallel T-cell cloning and deep sequencing of human MAIT cells reveal stable oligoclonal TCR $\beta$  repertoire. *Nat Commun* 2014;5:3866.
- Treiner E, Duban L, Bahram S, et al. Selection of evolutionarily conserved mucosal-associated invariant T cells by MR1. *Nature* 2003;422:164–169.
- Le Bourhis L, Martin E, Peguillet I, et al. Antimicrobial activity of mucosal-associated invariant T cells. *Nat Immunol* 2010;11:701–708.
- Gold MC, McLaren JE, Reistetter JA, et al. MR1-restricted MAIT cells display ligand discrimination and pathogen selectivity through distinct T cell receptor usage. *J Exp Med* 2014;211:1601–1610.
- Arden B, Clark SP, Kabelitz D, Mak TW. Human T-cell receptor variable gene segment families. *Immunogenetics* 1995;42:455–500.
- Kim SM, Bhonsle L, Besgen P, et al. Analysis of the paired TCR  $\alpha$ - and  $\beta$ -chains of single human T cells. *PloS One* 2012;7:e37338.
- Alamyar E, Giudicelli V, Li S, Duroux P, Lefranc MP. IMGT/HighV-QUEST: the IMGT(R) web portal for immunoglobulin (IG) or antibody and T cell receptor (TR) analysis from NGS high throughput and deep sequencing. *Immunome Res* 2012;8:26.
- Fergusson JR, Fleming VM, Klenerman P. CD161-expressing human T cells. *Front Immunol* 2011;2:36.
- Illés Z, Shimamura M, Newcombe J, Oka N, Yamamura T. Accumulation of Valpha7.2-Jalpha33 invariant T cells in human autoimmune inflammatory lesions in the nervous system. *Int Immunol* 2004;16:223–230.
- Annibaldi V, Ristori G, Angelini DF, et al. CD161(high) CD8+ T cells bear pathogenetic potential in multiple sclerosis. *Brain* 2011;134:542–554.
- Miyazaki Y, Miyake S, Chiba A, Lantz O, Yamamura T. Mucosal-associated invariant T cells regulate Th1 response in multiple sclerosis. *Int Immunol* 2011;23:529–535.
- Abrahamsson SV, Angelini DF, Dubinsky AN, et al. Non-myeloablative autologous haematopoietic stem cell transplantation expands regulatory cells and depletes IL-17 producing mucosal-associated invariant T cells in multiple sclerosis. *Brain* 2013;136:2888–2903.
- Willing A, Leach OA, Ufer F, et al. CD8(+) MAIT cells infiltrate into the CNS and alterations in their blood frequencies correlate with IL-18 serum levels in multiple sclerosis. *Eur J Immunol* 2014;44:3119–3128.
- Dusseaux M, Martin E, Serriari N, et al. Human MAIT cells are xenobiotic-resistant, tissue-targeted, CD161hi IL-17-secreting T cells. *Blood* 2011;117:1250–1259.
- Wekerle H, Berer K, Krishnamoorthy G. Remote control-triggering of brain autoimmune disease in the gut. *Curr Opin Immunol* 2013;25:683–689.
- Kjer-Nielsen L, Patel O, Corbett AJ, et al. MR1 presents microbial vitamin B metabolites to MAIT cells. *Nature* 2012;491:717–723.
- Patel O, Kjer-Nielsen L, Le Nours J, et al. Recognition of vitamin B metabolites by mucosal-associated invariant T cells. *Nat Commun* 2013;4:2142.