

**Reduced aggrecan expression affects cardiac outflow tract development in zebrafish and is associated with bicuspid aortic valve disease in humans**

Pierre Rambeau, Emilie Faure, Alexis Theron, Jean-François Avierinos, Chris Jopling, Stéphane Zaffran, Adèle Faucherre

► **To cite this version:**

Pierre Rambeau, Emilie Faure, Alexis Theron, Jean-François Avierinos, Chris Jopling, et al.. Reduced aggrecan expression affects cardiac outflow tract development in zebrafish and is associated with bicuspid aortic valve disease in humans. *International Journal of Cardiology*, Elsevier, 2017, 249, pp.340 - 343. 10.1016/j.ijcard.2017.09.174 . inserm-01617193

**HAL Id: inserm-01617193**

**<https://www.hal.inserm.fr/inserm-01617193>**

Submitted on 29 Mar 2018

**HAL** is a multi-disciplinary open access archive for the deposit and dissemination of scientific research documents, whether they are published or not. The documents may come from teaching and research institutions in France or abroad, or from public or private research centers.

L'archive ouverte pluridisciplinaire **HAL**, est destinée au dépôt et à la diffusion de documents scientifiques de niveau recherche, publiés ou non, émanant des établissements d'enseignement et de recherche français ou étrangers, des laboratoires publics ou privés.

## Short communication

# Reduced aggrecan expression affects cardiac outflow tract development in zebrafish and is associated with bicuspid aortic valve disease in humans

Pierre Rambeau<sup>a</sup>, Emilie Faure<sup>b</sup>, Alexis Théron<sup>b,c</sup>, Jean-François Avierinos<sup>b,d</sup>, Chris Jopling<sup>a</sup>, Stéphane Zaffran<sup>b</sup>, Adèle Faucherre<sup>a,\*</sup>

<sup>a</sup> IGF, LabexICST, CNRS, INSERM, Univ Montpellier, Montpellier, France

<sup>b</sup> Aix Marseille Univ, INSERM, GMGF, Marseille, France

<sup>c</sup> Service de Chirurgie Cardiaque, AP-HM, Hôpital de la Timone, 13005 Marseille, France

<sup>d</sup> Service de Cardiologie, AP-HM, Hôpital de la Timone, 13005 Marseille, France

## A B S T R A C T

Hemodynamic forces have been known for a long time to regulate cardiogenic processes such as cardiac valve development. During embryonic development in vertebrates, the outflow tract (OFT) adjacent to the ventricle comes under increasing hemodynamic load as cardiogenesis proceeds. Consequently, extracellular matrix components are produced in this region as the cardiac cushions form which will eventually give rise to the aortic valves. The proteoglycan AGGRECAN is a key component of the aortic valves and is frequently found to be deregulated in a variety of aortic valve diseases. Here we demonstrate that *aggrecan* expression in the OFT of developing zebrafish embryos is hemodynamically dependent, a process presumably mediated by mechanosensitive channels. Furthermore, knockdown or knockout of *aggrecan* leads to failure of the OFT to develop resulting in stenosis. Based on these findings we analysed the expression of AGGRECAN in human bicuspid aortic valves (BAV). We found that in type 0 BAV there was a significant reduction in the expression of AGGRECAN. Our data indicate that *aggrecan* is required for OFT development and when its expression is reduced this is associated with BAV in humans.

Received 19 June 2017

Received in revised form 21 August 2017

Accepted 18 September 2017

Available online 24 September 2017

### Keywords:

Aggrecan

Hemodynamic

Bicuspid aortic valve

## 1. Introduction

Arterial valve leaflets are composed of three distinct layers of Extra-Cellular Matrix (ECM) called fibrosa, spongiosa and ventricularis. The spongiosa layer is particularly rich in proteoglycans which will provide compressive properties to the tissue and allow the leaflet to change shape during the cardiac cycle. Indeed, valves are submitted to extreme hemodynamic forces such as shear stress and cyclic strain that will subsequently regulate both their development and function. Studies in chick and zebrafish have shown that disruption of the hemodynamic forces results in cardiac valves defects including defects of the outflow tract (OFT) cushion formation and severe heart defects associated with a total absence of valves [1,2]. Among valve diseases, bicuspid aortic valve (BAV) is one of the most common pathologies found in patients, occurring in 1–2% of living births and are frequently associated with aortic stenosis, regurgitation, endocarditis and calcified valves [3].

AGGRECAN is one of the major members of the large proteoglycans found in cartilage and provides the ability to resist compressive loads

[4]. A recent transcriptomic study of human BAV has shown that AGGRECAN expression is decreased in BAV patients with mild calcification compared with calcified tricuspid aortic valve (TAV) [5]. Zebrafish possess 2 *aggrecan* paralogues, *aggrecanA* (*acana*) and *aggrecanB* (*acanb*). Here we show that *acana* expression in the zebrafish OFT is dependent on hemodynamic forces and that knockdown or knockout of *acana* during development induces cardiovascular defects. Moreover, we observe that in humans, AGGRECAN (*ACAN*) expression is reduced in type 0 BAV compared to normal TAV.

## 2. Materials and methods

### 2.1. Zebrafish strains and husbandry

Zebrafish were maintained under standardized conditions [6] and experiments were conducted in accordance with the European Communities council directive 2010/63. The *Tg(fli1a:GFP)y1* line was provided by the CMR[B].

### 2.2. Ruthenium Red treatment

At 3dpf, larvae were incubated in a 10 or 20  $\mu$ M Ruthenium Red (RR) solution (Sigma, R2751) in E3 medium during 24 h.

\* Corresponding author at: Institut de Génétique Fonctionnelle, 141 rue de la Cardonille, 34094 Montpellier cedex 05, France.

E-mail address: [adele.faucherre@igf.cnrs.fr](mailto:adele.faucherre@igf.cnrs.fr) (A. Faucherre).

### 2.3. In situ hybridisation

ISH were performed as described previously [7,8] (see Supplementary information). For RR treated fish, the proteinase K treatment was reduced to 15 min.

### 2.4. Morpholinos and injections

Morpholino oligonucleotides were obtained from Gene Tools (Philomath, OR, USA) and injected into one-cell stage embryos (see Supplementary information).

### 2.5. CRISPR/Cas9

*Acana* target sequences were identified using ZiFIT online software [9]. 150 pg of *acana* gRNA was co-injected with nls-Cas9 protein (N.E.B) (see Supplementary information).

### 2.6. Cardiovascular parameters analysis

Cardiovascular parameters were determined using the MicroZebraLab™ software from ViewPoint [10] (see Supplementary information).

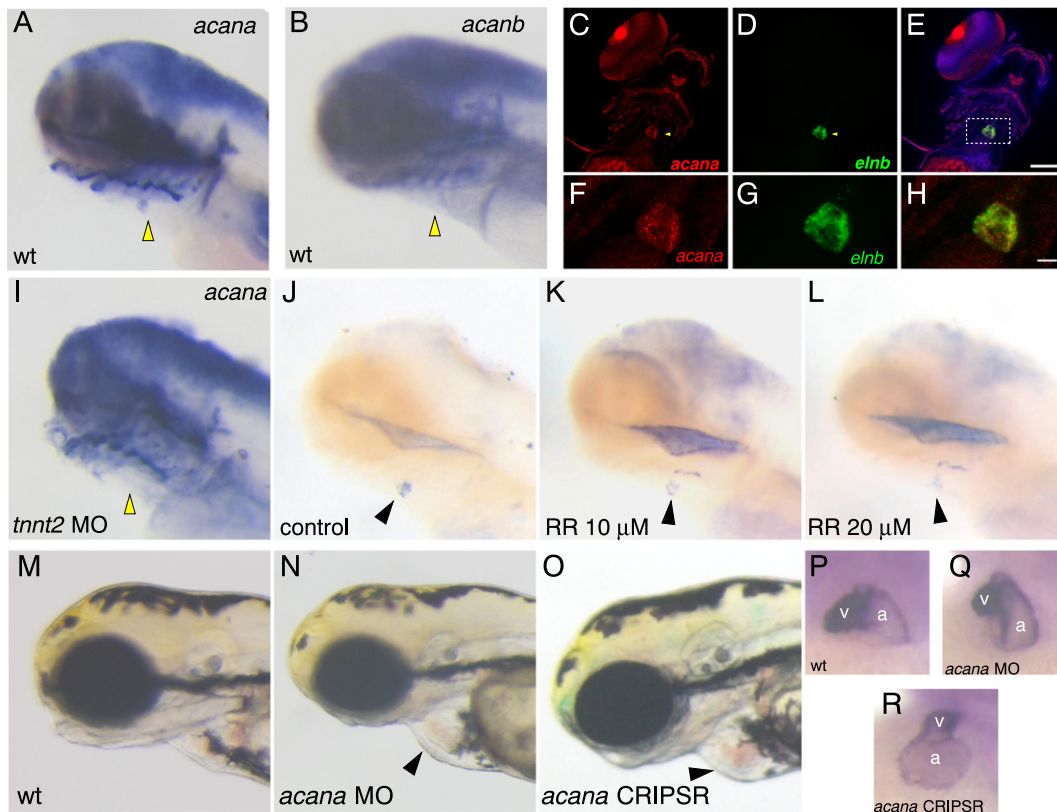
### 2.7. Real-time quantitative Reverse Transcription Polymerase Chain Reaction (qRT-PCR)

Human aortic valve tissues were collected after surgery by the Department of cardiac surgery at “La Timone” Hospital, Marseille, France. The protocol was evaluated and authorised by the “CPP Sud Méditerranée” n°: 13.061. and by the “Agence de la biomédecine” n°PFS14-011. (see Supplementary information).

## 3. Results

### 3.1. *AggrecanA* is expressed in the zebrafish OFT and is dependent on hemodynamic forces

To determine the expression pattern of *aggrecan*, we performed *in situ* hybridization (ISH) on 4 days post-fertilization (dpf) embryos using antisense *acana* and *acانب* probes. *Acana* showed a high expression in cranio-facial cartilage as previously described [11], however we were also able to observe a clear expression of *acana* in the OFT (Fig. 1.A). In contrast, we could not detect any *acانب* expression in this cardiac structure (Fig. 1.B). In order to confirm that *acana* expression was localised to the OFT, we performed double fluorescent ISH on 4dpf larvae using antisense probes targeting *acana* and *elastin b* (*elnb*), an abundant component of the zebrafish OFT [12]. In this manner we were able to observe that *acana* expression co-localised with *elnb* expression in the OFT (Fig. 1.C–H). Because ECM composition can be modulated by hemodynamic forces, we sought to determine whether this was the case for *acana* expression in the OFT. To achieve this, we used a previously described morpholino targeting *tnnt2* which effectively stops the heart from beating [13]. In this manner we found that *tnnt2* morphants display an apparent lack of *acana* expression in the OFT (Fig. 1.I). Previous research has indicated that mechanosensitive ion channels (MSC) can detect hemodynamic forces and trigger valve formation [14]. To determine whether MSC could mediate *acana* expression in response to hemodynamic forces, we employed the nonselective MSC blocker Ruthenium Red (RR). In



**Fig. 1. *Acana* is hemodynamically expressed in the OFT and is involved in heart development.** (A–B) ISH of 4dpf larvae using antisense *acana* (A) and *acانب* (B) probes. *Acana* is expressed in the OFT (A, yellow arrowhead). *Acانب* expression was not detected in the OFT (B, yellow arrowhead). (C–E) Confocal maximal projection images of double fluorescent ISH on 4dpf WT larvae using antisense *acana* (C, red) and *elnb* (D, green) probes (Blue: DAPI, yellow arrowheads indicate the OFT). (F–H) Same larvae at higher magnification (dashed rectangle in E). The merged images (E,H) indicate that *acana* is expressed in the OFT labelled by *elnb*. Scale bars E: 100  $\mu$ m; H: 20  $\mu$ m. (I) ISH of 4dpf *tnnt2*-MO injected larvae using an antisense *acana* probe. *Acana* expression was not detected in the OFT (yellow arrowhead). (J–L) ISH of 4dpf larvae using an antisense *acana* probe on nontreated (J, control, n = 19), or treated specimen with 10  $\mu$ M (K, n = 15) and 20  $\mu$ M (L, n = 6) of Ruthenium Red (RR). Black arrowheads indicate the OFT. (M–O) Bright field images of non-injected (M), *acana*-MO (N) and CRISPR/Cas9 injected (O) 3dpf larvae. Both morphant and transient knockout display heart edema (black arrowheads). (P–R) *myl7* ISH showing the morphology of a wild-type heart (P) or of hearts from *acana*-MO (Q) and CRISPR/Cas9 injected (R) 3dpf larvae. Both morphant and transient knockout display a larger atrium (v: ventricle; a: atrium).

this manner we could observe that larvae incubated with RR showed a dose responsive decrease of *acana* expression in the OFT (Fig. 1.J–L).

### 3.2. AggrecanA is involved in cardiac development

Due to its expression in the OFT, we speculated that *acana* may play a role in cardiac development. To answer this question we adopted a morpholino (MO) mediated approach targeting an internal splice site. Injection of this MO produced a phenotype characterized by defective cardiogenesis including a larger atrium and associated edema at 3dpf (Fig. 1.M–N, P–Q). To confirm the specificity of the phenotype, we performed several control experiments (Suppl. Fig. 1 and Suppl. information). We also implemented a previously described transient CRISPR/Cas9 knockout strategy [15,16]. In this manner we were able to observe zebrafish embryos displaying a similar cardiac phenotype to that observed when *acana* was knocked-down with a MO (Fig. 1.O,R). Although this approach will result in a mosaic knockout of *acana*, all embryos which displayed a cardiac phenotype tested positive for KO of *acana* by T7 assay ( $n = 6/44$ ) (Suppl. Fig. 2). Together these results indicate that loss of *acana* either by knockdown or knockout leads to perturbed cardiogenesis.

To better understand how the OFT has been affected, we analysed this structure in *Tg(fli1a:GFP)y1* larvae which express GFP in all endothelial cells. At 3dpf, the wild-type OFT displays a typical “pear-shape” structure (Fig. 2.A). By contrast, in the *acana* morphants this structure has failed to develop (Fig. 2.B). In parallel, we also analysed a number of cardiovascular parameters such as heart rate and stroke volume. No significant differences were observed in the heart rate between the wild-type and *acana* morphants (Suppl. Fig. 3). However, the cardiac

output and stroke volume were significantly decreased in *acana* morphants when compared to controls (Fig. 2.C and Suppl. Fig. 3). We also recorded high-speed movies of the beating embryonic heart and observed that in *acana* morphants there was a significant amount of blood regurgitation between the ventricle and the atrium, most likely caused by failed OFT development, forcing blood back through the AV canal (Suppl. movies M1 and M2).

### 3.3. ACAN expression is reduced in human BAV patients

Based on our findings in zebrafish, we hypothesised that reduced *AGGRECAN* (*ACAN*) expression may also be associated with aortic valve diseases such as BAV. Firstly, we determined the relative abundance of *ACAN* in the aortic valve by qPCR and were able to detect *ACAN* expression during foetal valve development in human (Suppl. Fig. 4). By 13 weeks of gestation, the *ACAN* expression greatly increased and this expression was even more abundant in adult valves. To assess the possibility that *ACAN* expression could be reduced in BAV patients, we performed RT-qPCR analysis using RNA extracted from aortic valves surgically removed from patients diagnosed type 0 “pure” BAV. As a control we used RNA extracted from normal TAV. We observed a significant (16 fold) decrease in the expression of *ACAN* in the type 0 BAV samples when compared to the control TAV samples (Fig. 2.D).

## 4. Discussion

Here we have shown that hemodynamically dependent *acana* expression is required for OFT development in zebrafish. Moreover, we showed that a MSC could be the sensor of these hemodynamic forces. It has recently been shown that the *Trpv4* MSC, a target of RR, is involved in atrioventricular valve development in response to hemodynamic forces [14]. However, because RR is non-specific, we cannot determine the true identity of the MSC at this juncture. Because the analogous region in humans will give rise to the aortic valves, we also analysed *ACAN* expression during human aortic valve development and in patients who suffer from type 0 BAV we found a significant reduction when compared to TAV.

Because of the rarity of this condition, we were only able to analyse relatively few patients, however the difference was in excess of 16 fold. It will therefore be necessary to expand this cohort to determine fully the reduction in the expression of *AGGRECAN* associated with BAV type 0. At present little is known about the genetic causes of BAV, with only a handful of genes thus far identified and, as one can imagine, there is even less known about what causes the different types of BAV. Although we cannot categorically state that reduced *AGGRECAN* expression is the root cause of type 0 BAV, its association with this condition does appear to be significant. Decreased *AGGRECAN* expression with BAV type 0 may not be so surprising considering it is required to strengthen and provide rigidity to the developing valves, and when this is lost the developmental process will malfunction. Why *AGGRECAN* expression is reduced in BAV type 0 remains unclear at this juncture, however it is possible that defective hemodynamics or defective mechanosensation of these forces during OFT development could be involved with this condition.

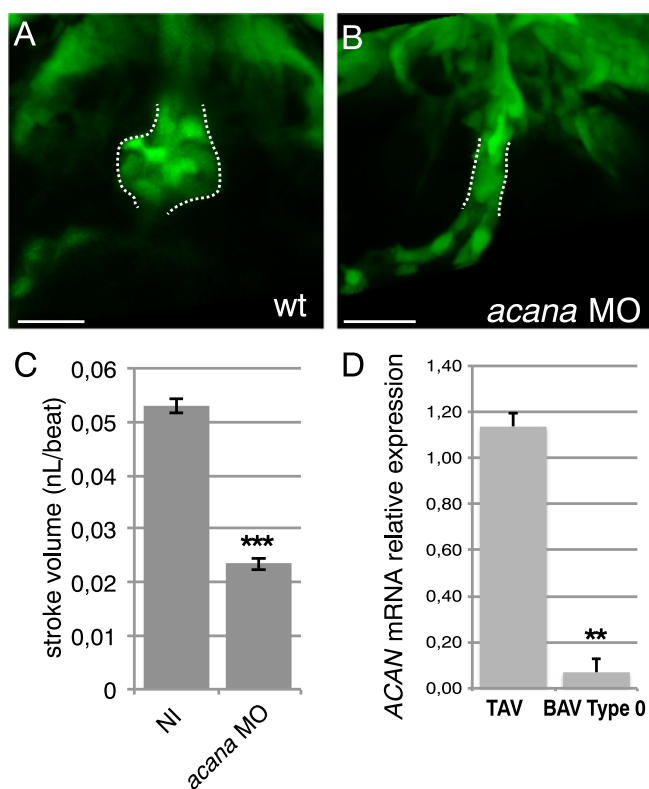
Supplementary data to this article can be found online at <https://doi.org/10.1016/j.ijcard.2017.09.174>.

### Conflict of interest

The authors report no relationships that could be construed as a conflict of interest.

### Acknowledgements

A.F is currently supported by a Labex ISCT postdoctoral fellowship with previous support provided by a Fondation Lefoulon-Delalande



**Fig. 2. Knockdown of *acana* disrupts OFT development and *AGGRECAN* expression is modified in human BAV patients.** (A,B) Confocal maximal projection image of 3dpf *Tg(fli1a:GFP)y1* OFT from WT (A) and *acana* morphant (B) larvae. White dashed lines indicate the OFT. (C) Graph showing the difference in stroke volume between non-injected (NI,  $n = 13$ ) and *acana* morphants ( $n = 12$ ). \*\*\* $p < 0.001$  (Student's *t*-test) (D) Graph showing relative mRNA expression of *ACAN* between TAV controls ( $n = 4$ ) and BAV Type 0 ( $n = 2$ ). \*\* $p < 0.05$  (nonparametric Mann and Withney test). Error bars represent mean  $\pm$  SEM in all histograms.

postdoctoral fellowship. P.R is supported by the Labex ISCT PhD program. C.J is supported by an INSERM ATIP-AVENIR grant and a Marie Curie CIG (PCIG12-GA-2012-332772). A.F, P.R and C.J are members of the Laboratory of Excellence «Ion Channel Science and Therapeutics» supported by a grant from the ANR. Work in C.J lab is supported by a grant from the Fondation Leducq and by the Fédération pour la Recherche sur le Cerveau (FRC). Work in S.Z lab is supported by INSERM, the Fédération Française de Cardiologie, and the Association Française contre les Myopathies (AFM-Telethon).

## References

- [1] V. Menon, J.F. Eberth, R.L. Goodwin, J.D. Potts, Altered hemodynamics in the embryonic heart affects outflow valve development, *J. Cardiovasc. Dev. Dis.* 2 (2015) 108–124.
- [2] J.R. Hove, R.W. Koster, A.S. Forouhar, G. Acevedo-Bolton, S.E. Fraser, M. Gharib, Intracardiac fluid forces are an essential epigenetic factor for embryonic cardiogenesis, *Nature* 421 (2003) 172–177.
- [3] R. Padang, R.D. Bagnall, C. Semsarian, Genetic basis of familial valvular heart disease, *Circ. Cardiovasc. Genet.* 5 (2012) 569–580.
- [4] J. Lincoln, A.W. Lange, K.E. Yutzey, Hearts and bones: shared regulatory mechanisms in heart valve, cartilage, tendon, and bone development, *Dev. Biol.* 294 (2006) 292–302.
- [5] R. Padang, R.D. Bagnall, T. Tsoutsman, P.G. Bannon, C. Semsarian, Comparative transcriptome profiling in human bicuspid aortic valve disease using RNA sequencing, *Physiol. Genomics* 47 (2015) 75–87.
- [6] M. Westerfield, *The zebrafish book, A Guide for the Laboratory Use of Zebrafish (Danio rerio)*, 4th ed. Univ. of Oregon Press, Eugene, 2000.
- [7] T. Brend, S.A. Holley, Zebrafish whole mount high-resolution double fluorescent *in situ* hybridization, *J. Vis. Exp.* (2009).
- [8] C. Thisse, B. Thisse, High-resolution *in situ* hybridization to whole-mount zebrafish embryos, *Nat. Protoc.* 3 (2008) 59–69.
- [9] J.D. Sander, P. Zaback, J.K. Joung, D.F. Voytas, D. Dobbs, Zinc Finger Targeter (ZiFIT): an engineered zinc finger/target site design tool, *Nucleic Acids Res.* 35 (2007) W599–605.
- [10] T. Parker, P.A. Libourel, M.J. Hetheridge, R.I. Cumming, T.P. Sutcliffe, A.C. Goonesinghe, et al., A multi-endpoint *in vivo* larval zebrafish (*Danio rerio*) model for the assessment of integrated cardiovascular function, *J. Pharmacol. Toxicol. Methods* 69 (2014) 30–38.
- [11] J.S. Kang, Y. Kawakami, Y. Bekku, Y. Ninomiya, J.C. Izpisua Belmonte, T. Ohashi, Molecular cloning and developmental expression of a hyaluronan and proteoglycan link protein gene, *crt11/hapln1*, in zebrafish, *Zool. Sci.* 25 (2008) 912–918.
- [12] M. Miao, A.E. Bruce, T. Bhanji, E.C. Davis, F.W. Keeley, Differential expression of two tropoelastin genes in zebrafish, *Matrix Biol.* 26 (2007) 115–124.
- [13] A.J. Sehnert, A. Huq, B.M. Weinstein, C. Walker, M. Fishman, D.Y. Stainier, Cardiac troponin T is essential in sarcomere assembly and cardiac contractility, *Nat. Genet.* 31 (2002) 106–110.
- [14] E. Heckel, F. Boselli, S. Roth, A. Krudewig, H.G. Belting, G. Charvin, et al., Oscillatory flow modulates mechanosensitive *klf2a* expression through *trpv4* and *trpp2* during heart valve development, *Curr. Biol.* 25 (2015) 1354–1361.
- [15] B. Willems, S. Tao, T. Yu, A. Huyseune, P.E. Witten, C. Winkler, The Wnt Co-receptor *Lrp5* is required for cranial neural crest cell migration in zebrafish, *PLoS One* 10 (2015), e0131768.
- [16] Y. Moriyama, F. Ito, H. Takeda, T. Yano, M. Okabe, S. Kuraku, et al., Evolution of the fish heart by sub/neofunctionalization of an elastin gene, *Nat. Commun.* 7 (2016) 10397.