



## Proglucagon Promoter Cre-Mediated AMPK Deletion in Mice Increases Circulating GLP-1 Levels and Oral Glucose Tolerance

Sophie R. Sayers, Frank Reimann, Fiona M. Gribble, Helen Parker, Sagen Zac-Varghese, Stephen R. Bloom, Marc Foretz, Benoit Viollet, Guy A. Rutter

### ► To cite this version:

Sophie R. Sayers, Frank Reimann, Fiona M. Gribble, Helen Parker, Sagen Zac-Varghese, et al.. Proglucagon Promoter Cre-Mediated AMPK Deletion in Mice Increases Circulating GLP-1 Levels and Oral Glucose Tolerance. PLoS ONE, 2016, 11 (3), 10.1371/journal.pone.0149549 . inserm-01305472

**HAL Id: inserm-01305472**

**<https://inserm.hal.science/inserm-01305472>**

Submitted on 21 Apr 2016

**HAL** is a multi-disciplinary open access archive for the deposit and dissemination of scientific research documents, whether they are published or not. The documents may come from teaching and research institutions in France or abroad, or from public or private research centers.

L'archive ouverte pluridisciplinaire **HAL**, est destinée au dépôt et à la diffusion de documents scientifiques de niveau recherche, publiés ou non, émanant des établissements d'enseignement et de recherche français ou étrangers, des laboratoires publics ou privés.

RESEARCH ARTICLE

# Proglucagon Promoter *Cre*-Mediated AMPK Deletion in Mice Increases Circulating GLP-1 Levels and Oral Glucose Tolerance

Sophie R. Sayers<sup>1</sup>, Frank Reimann<sup>2</sup>, Fiona M. Gribble<sup>2</sup>, Helen Parker<sup>2</sup>, Sagen Zac-Varghese<sup>3</sup>, Stephen R. Bloom<sup>3</sup>, Marc Foretz<sup>4,5,6</sup>, Benoit Viollet<sup>4,5,6</sup>, Guy A. Rutter<sup>1\*</sup>

**1** Department of Cell Biology and Functional Genomics, Imperial College London, London, W12 0NN, United Kingdom, **2** Wellcome Trust - MRC Institute of Metabolic Science, University of Cambridge, Hills Road, Cambridge, CB2 0QQ, United Kingdom, **3** Department of Investigative Medicine, Imperial College London, London, W12 0NN, United Kingdom, **4** INSERM, U1016, Institut Cochin, 75014 Paris, France, **5** CNRS, UMR8104, 75014 Paris, France, **6** Université Paris Descartes, Sorbonne Paris Cité, 75014 Paris, France

\* [g.rutter@imperial.ac.uk](mailto:g.rutter@imperial.ac.uk)



## OPEN ACCESS

**Citation:** Sayers SR, Reimann F, Gribble FM, Parker H, Zac-Varghese S, Bloom SR, et al. (2016) Proglucagon Promoter *Cre*-Mediated AMPK Deletion in Mice Increases Circulating GLP-1 Levels and Oral Glucose Tolerance. PLoS ONE 11(3): e0149549. doi:10.1371/journal.pone.0149549

**Editor:** Francis C. Lynn, University of British Columbia, CANADA

**Received:** December 8, 2015

**Accepted:** February 2, 2016

**Published:** March 24, 2016

**Copyright:** © 2016 Sayers et al. This is an open access article distributed under the terms of the [Creative Commons Attribution License](http://creativecommons.org/licenses/by/4.0/), which permits unrestricted use, distribution, and reproduction in any medium, provided the original author and source are credited.

**Data Availability Statement:** All relevant data are within the paper and its Supporting Information files.

**Funding:** GAR was supported by a Wellcome Trust (<http://www.wellcome.ac.uk/>) Senior Investigator Award (WT098424AIA), an MRC (<http://www.mrc.ac.uk/>) Programme Grant (MR/J0003042/1) and a Royal Society (<https://royalsociety.org/>) Wolfson Research Merit Award. SZ-V received a Merck Sharp & Dohme (MSD)/European Foundation for the Study of Diabetes (EFSD, <http://www.europeandiabetesfoundation.org/>) award. This work was also supported by the Innovative Medicines

## Abstract

### Background

Enteroendocrine L-cells synthesise and release the gut hormone glucagon-like peptide-1 (GLP-1) in response to food transit. Deletion of the tumour suppressor kinase LKB1 from proglucagon-expressing cells leads to the generation of intestinal polyps but no change in circulating GLP-1 levels. Here, we explore the role of the downstream kinase AMP-activated protein kinase (AMPK) in these cells.

### Method

Loss of AMPK from proglucagon-expressing cells was achieved using a preproglucagon promoter-driven *Cre* (iGluCre) to catalyse recombination of floxed alleles of AMPK $\alpha$ 1 and  $\alpha$ 2. Oral and intraperitoneal glucose tolerance were measured using standard protocols. L-cell mass was measured by immunocytochemistry. Hormone and peptide levels were measured by electrochemical-based luminescence detection or radioimmunoassay.

### Results

Recombination with iGluCre led to efficient deletion of AMPK from intestinal L- and pancreatic  $\alpha$ -cells. In contrast to mice rendered null for LKB1 using the same strategy, mice deleted for AMPK displayed an increase (WT:  $0.05 \pm 0.01$ , KO:  $0.09 \pm 0.02\%$ ,  $p < 0.01$ ) in L-cell mass and elevated plasma fasting (WT:  $5.62 \pm 0.800$  pg/ml, KO:  $14.5 \pm 1.870$ ,  $p < 0.01$ ) and fed (WT:  $15.7 \pm 1.48$  pg/ml, KO:  $22.0 \pm 6.62$ ,  $p < 0.01$ ) GLP-1 levels. Oral, but not intraperitoneal, glucose tolerance was significantly improved by AMPK deletion, whilst insulin and glucagon levels were unchanged despite an increase in  $\alpha$  to  $\beta$  cell ratio (WT:  $0.23 \pm 0.02$ , KO:  $0.33 \pm 0.03$ ,  $p < 0.01$ ).

Initiative ([http://www.imi.europa.eu/index\\_en.html](http://www.imi.europa.eu/index_en.html))

Joint Undertaking under Grant Agreement 155005 (IMIDIA), resources of which are composed of financial contribution from the European Union's Seventh Framework Programme (FP7/2007-2013) and European Federation of Pharmaceutical Industries and Associations (EFPIA) companies. Financial support was provided by the pharmaceutical company, Astra Zeneca, under the terms of the IMIDIA consortium. The funders had no role in study design, data collection and analysis, decision to publish, or preparation of the manuscript.

**Competing Interests:** The authors have the following interests. SZ-V received a Merck Sharp & Dohme (MSD)/European Foundation for the Study of Diabetes (EFSD, <http://www.europeandiabetesfoundation.org/>) award. Financial support was provided by the pharmaceutical company, Astra Zeneca, under the terms of the IMIDIA consortium. There are no patents, products in development or marketed products to declare. This does not alter the authors' adherence to all the PLOS ONE policies on sharing data and materials, as detailed online in the guide for authors.

**Abbreviations:** AMPK, AMP-activated protein kinase; EMT, epithelial-to-mesenchymal transition; GLP-1, glucagon-like peptide-1; GLP1R, GLP-1 receptor; iGluCre, preproglucagon promoter-driven Cre recombinase; ITT, insulin tolerance test; IPGTT, OGTT, intraperitoneal or oral glucose tolerance test; LKB1, liver kinase B1.

## Conclusion

AMPK restricts L-cell growth and GLP-1 secretion to suppress glucose tolerance. Targeted inhibition of AMPK in L-cells may thus provide a new therapeutic strategy in some forms of type 2 diabetes.

## Introduction

Release of hormones from enteroendocrine cells in response to food transit through the gut, and the consequent activation of insulin release beyond that prompted by the rise in blood glucose alone, is responsible for the incretin effect during feeding [1,2]. L-cells make up less than 1% of the epithelial cells lining the intestinal wall, but are vital for normal physiology and energy metabolism [3,4]. L-cells are thus responsible for the synthesis and secretion of glucagon-like peptide-1 (GLP-1), GLP-2, peptide YY (PYY) and oxyntomodulin via the action of prohormone convertases (PC) 1/3 on proglucagon [5]. Although the mechanisms which trigger secretion from L-cells in response to nutrients are debated [6], roles for sodium-glucose co-transporters (SGLTs), ATP-sensitive K<sup>+</sup> (K<sub>ATP</sub>) channels and an array of G-protein-coupled receptors have all been implicated.

GLP-1 receptors (GLP1R) are present on the pancreatic beta-cell and agonism at these receptors by L-cell-derived peptides, or by stabilised analogues such as liraglutide [7], is of considerable therapeutic interest in the treatment of type 2 diabetes (T2D). Binding of GLP-1 to GLP1R on pancreatic beta-cells triggers cAMP synthesis and downstream signalling by Protein kinase A (PKA) and Exchange Protein Activated by cAMP-2 (EPAC2), to activate insulin secretion [8,9]. Although a matter of debate [10], enhanced ATP synthesis [11], closure of K<sub>ATP</sub> channels and Ca<sup>2+</sup> influx may also play a role [12]. Whether the effects of GLP-1 are chiefly achieved through an action of the circulating hormone [13], or reflect an paracrine reflex loop triggered by GLP1 released in the gut [14,15], is also contested.

Released from pancreatic alpha-cells, glucagon is generated by the action of prohormone convertases (PC) 2 on proglucagon, and serves as the main anti-hypoglycaemic hormone in mammals [16]. Whilst elevated secretion of the hormone contributes to hyperglycemia in earlier stages of Type 2 diabetes T2D [17], impaired release is observed in patients living with Type 1 diabetes (T1D) and in long-standing T2D [18].

AMP-activated protein kinase (AMPK) is an evolutionarily-conserved fuel-sensitive serine/threonine protein kinase and cellular nutrient sensor implicated in the regulation of energy homeostasis [19] [20]. AMPK exists as a heterotrimeric complex comprising a catalytic  $\alpha$  ( $\alpha$ 1 and  $\alpha$ 2; encoded by *Prkaa1* and *Prkaa2*) subunit, a scaffold  $\beta$  (*Prkab*;  $\beta$ 1 and  $\beta$ 2) subunit and a regulatory  $\gamma$  (*Prkag*;  $\gamma$ 1,  $\gamma$ 2 or  $\gamma$ 3) subunit [21,22]. The AMPK complex is activated in response to elevated intracellular AMP:ATP [23] and ADP:ATP ratios [24]. Responses to these changes in nucleotide ratios are chiefly, though not exclusively, controlled by alterations in the susceptibility to phosphorylation by upstream kinases, notably liver kinase B1 (LKB1; STK11) and Ca<sup>2+</sup> / calmodulin-dependent kinase kinase II (CaMKKII) [25], of threonine-172 in the key catalytic loop of the  $\alpha$ -subunit [26]. We have previously shown that changes in AMPK activity are important for the regulation of both insulin [27,28] and glucagon [29,30] secretion by glucose and other nutrients. Whether this enzyme is also important in the control of hormone secretion from L-cells is unknown.

LKB1 is a tumour suppressor deleted in Peutz-Jeghers syndrome (PJS), a condition characterised by the appearance of hamartomatous polyps in the gut and increased risk cancer [31].

In addition to phosphorylating AMPK, LKB1 is also responsible for the activation for a further 12 downstream kinases of the AMPK-related kinase (AMPK-RK) family [32]. We have previously observed [33] that deletion of LKB1 from proglucagon-expressing cells, achieved by crossing animals bearing a glucagon promoter-driven Cre recombinase (iGluCre) to mice with floxed LKB1 alleles, leads to the development of large gastro-duodenal polyps, reminiscent of those seen in PJS [31]. This leads to premature death from ~ 14 weeks as a result of impaired gastric emptying. Lineage tracing revealed that LKB1 ablation caused an epithelial-to-mesenchymal transition (EMT) in LKB1 null proglucagon-expressing cells, and consequently the formation of a population of smooth muscle-like cells which expanded to form polyps.

The present study was therefore designed with two goals in mind. Firstly, to determine whether the suppressive effect of LKB1 on EMT in L-cells or their progenitors is mediated by AMPK or via other AMPK-RKs [32], and secondly to explore the role of AMPK in controlling circulating GLP-1 levels.

## Materials and Methods

### Materials

Unless indicated otherwise, reagents were purchased from Sigma (Poole, Dorset, U.K.).

### Methods

**Generation of mice selectively lacking AMPK  $\alpha 1$  and  $\alpha 2$  in proglucagon-producing cells.** Mice homozygous for AMPK $\alpha 1^{\text{fl/fl}}$  were first crossed to mice homozygous for AMPK $\alpha 2^{\text{fl/fl}}$ . The resulting double heterozygous AMPK $\alpha 1^{\text{fl/+}};\alpha 2^{\text{fl/+}}$  mice were crossed with iGluCre expressing animals [34], where ~100 kB of the 5' flanking region of the mouse proglucagon promoter drives Cre expression. The latter provides efficient recombination both in L-cells and in pancreatic alpha-cells, with a minor degree of recombination also in pancreatic beta-cells [35]. The above strategy generated triple heterozygous iGluCre:AMPK $\alpha 1^{\text{fl/+}};\alpha 2^{\text{fl/+}}$ -positive mice. The latter were bred with AMPK $\alpha 1^{\text{fl/fl}};\alpha 2^{\text{fl/fl}}$  mice to produce iGluAMPKdKO animals and further crossed to AMPK $\alpha 1^{\text{fl/fl}};\alpha 2^{\text{fl/fl}}$  animals to generate littermate controls. As previously reported using STOP-*flox*-tdRFP reporter mice [34,35], recombination catalysed with this Cre deleter strain occurs in > 75% of pancreatic  $\alpha$  cells, ~ 70% of intestinal L-cells. Low levels of recombination were also found in the olfactory bulb and hind brain [35]. All mice were kept on a C57/BL6 background.

**Mouse maintenance and diet.** Mice were housed in cages with 2–6 mice per cage in a pathogen free facility with a 12 hour light and dark cycle. Animals had *ad libitum* access to standard mouse chow diet (Research Diet, New Brunswick, NJ). All *in vivo* procedures were conducted in accordance with U.K. Home Office regulations (Animal Scientific Procedures Act of 1986, Home Office Project License number PPL 70/06608, holder Dr Isabelle Leclerc), with approval from the local ethical committee (Animal Welfare and Ethics Review Board, AWERB), at the Central Biological Services (CBS) unit at the Hammersmith Campus of Imperial College London. Animals were euthanized at the end of the study (i.e. immediately after the completion of the indicated protocols) by cervical dislocation followed by termination of the circulation by decapitation. The study used a total of 42 experimental animals.

**Oral (OGTT) and intraperitoneal (IPGTT) glucose tolerance tests.** Mice were fasted overnight (15 h) and given free access to water. Glucose (1 g/kg body weight) was administered via either oral gavage or intraperitoneal injection. Blood was sampled from the tail vein at 0, 15, 30, 45, 60, 90 and 120 min. after glucose administration. Blood glucose was measured with an automatic glucometer (Accucheck; Roche, Burgess Hill, UK).

**Plasma glucagon and insulin measurement.** For measurement of glucagon and insulin levels *in vivo*, 100  $\mu$ l of blood was collected from the tail vein into heparin-coated tubes (Sarstedt, Beaumont Leys, UK). Plasma was separated by sedimentation at 10,000 g for 20 min (4°C). Plasma glucagon or insulin levels were measured in 50  $\mu$ L aliquots by radioimmunoassay with competitive  $^{125}$ I-labelled glucagon or insulin (Millipore, Watford, UK).

**Measurement of plasma GLP-1.** Mice were fasted overnight (15 h), or fed *ad libitum*, and 50  $\mu$ l blood collected from the tail vein into EDTA-coated tubes. Plasma was separated by centrifugation at 4°C, 13,200 r.p.m. for 20 min. and total GLP-1 levels assayed using a two-site microtitre plate-based immunoassay with electrochemical luminescence detection (Meso Scale Discovery Kit, Gaithersburg, MD).

**Insulin tolerance tests.** Mice were fasted for 5 h with free access to water before intraperitoneal injection with 0.75 U/kg bovine insulin (Sigma, Dorset, UK). Blood glucose levels were measured at 0, 15, 30, 45 and 60 min.

**Immunohistochemistry of pancreatic and intestinal sections.** Isolated pancreata and sections of the ileum were fixed in 10% (vol/vol) buffered formalin and embedded in paraffin wax within 24 h of removal. Details of the subsequent immunohistochemical analysis are provided under [S2 File](#) (Supplementary Methods).

**Pancreatic islet isolation.** Islets were isolated as described previously [36]. Further details are provided under [S2 File](#) (Supplementary Methods).

**Glucagon secretion.** Glucagon secretion was measured from groups of 12 size-matched islets per well essentially as described [30]. Further details are provided under *Supplementary Methods*.

**Statistics.** Data were analysed using GraphPad PRISM 6.0 software. Significance was tested using unpaired Student's two-tailed t-tests with Bonferroni post-tests for multiple comparisons, or two-way ANOVA as indicated.  $P < 0.05$  was considered significant and errors signify  $\pm$  SEM.

## Results

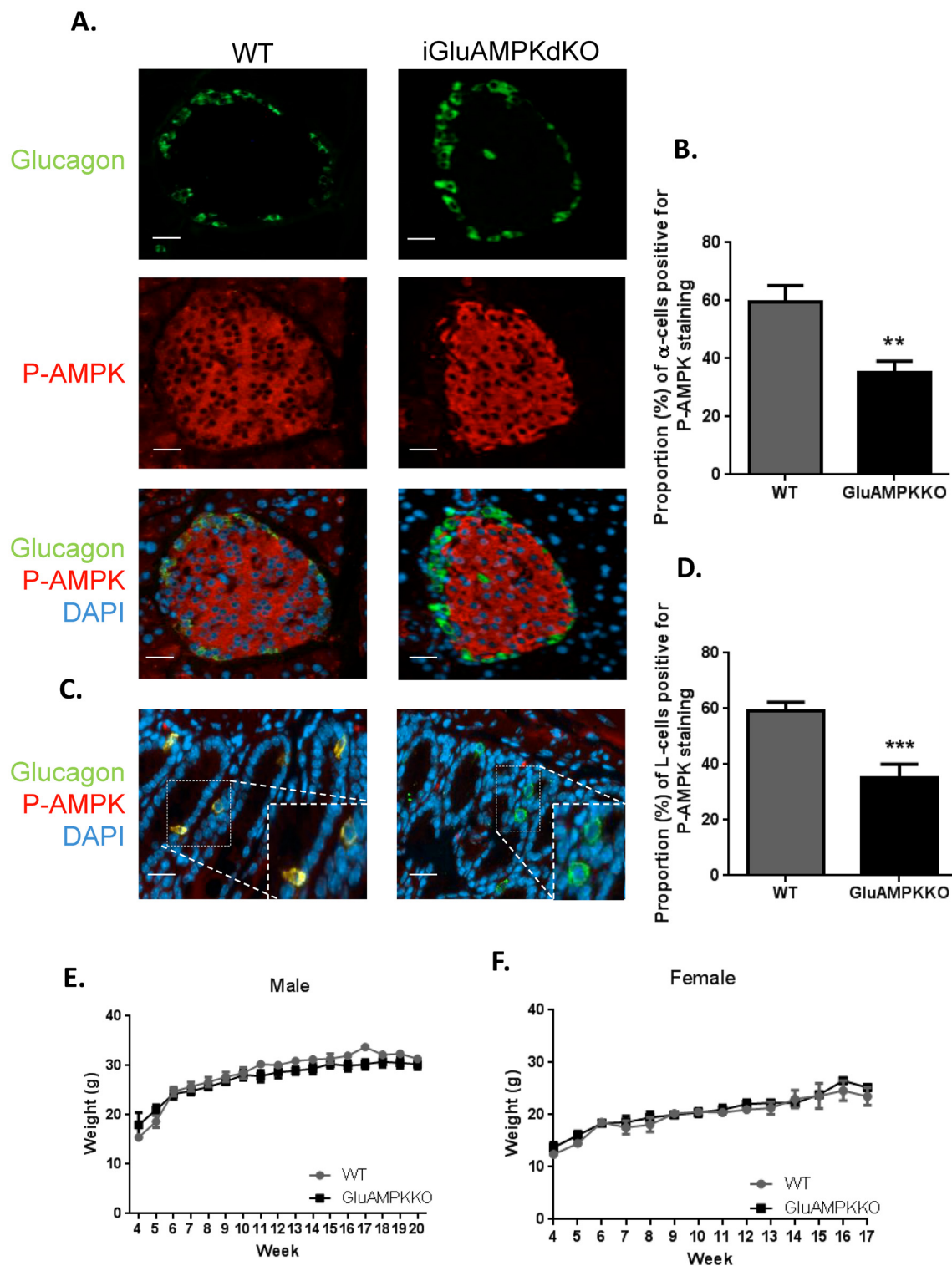
### Deletion of the AMPK $\alpha$ -subunits improves oral but not intraperitoneal glucose tolerance

[Fig 1A](#) demonstrates the deletion of AMPK from pancreatic  $\alpha$ -cells in iGluCre:AMPK $\alpha$ 1: $\alpha$ 2KO (subsequently referred to as iGluAMPKdKO) mice by immunocytochemical analysis. The percentage of  $\alpha$ -cells co-stained with anti-P-AMPK  $\alpha$ 1/ $\alpha$ 2 and anti-glucagon antibodies was calculated ([Fig 1B](#)) and revealed a ~2-fold decrease in P-AMPK levels in the null mice as assessed in terms of the proportion of pAMPK immuno-positive cells (WT:  $59.6 \pm 5.57$ , KO  $35.1 \pm 4.04$ ,  $P < 0.01$ ). Pancreatic slices were also co-stained for P-AMPK and insulin demonstrating that AMPK was not deleted in  $\beta$ -cells ([S1 Fig](#), [S1 File](#), WT;  $83.5 \pm 5.19$ , KO;  $76.8 \pm 2.07$ ,  $P > 0.05$ ).

Both AMPK $\alpha$  isoforms were detected at the mRNA level in purified wild-type L-cells across the intestine, with  $\alpha$ 1 predominating ([S2 Fig](#)). By immunocytochemical analysis of sections of the ileum, P-AMPK was detected in a smaller proportion of L-cells from iGluAMPKdKO mice ( $P < 0.001$ ) *versus* WT littermates ( $35.3 \pm 4.75$  and  $59.3 \pm 2.95$ , respectively, [Fig 1C and 1D](#)), consistent with recombination in the majority of L-cells.

Body weight was measured weekly in WT and KO mice from weaning (4 weeks) until 20 weeks of age in males, and 17 weeks of age in females ([Fig 1E and 1F](#)) and revealed no differences between genotypes. iGluAMPKdKO mice appeared healthy and were not bloated in appearance, in contrast to LKB1 KO mice produced using the same proglucagon promoter-driven *Cre* to achieve recombination of floxed *Lkb1* alleles [33].





**Fig 1. AMPK is deleted selectively in pancreatic  $\alpha$ -cells and enteroendocrine L-cells in iGlu AMPKdKO mice.** (A) Immunofluorescent staining of pancreatic islets using P-AMPK $\alpha$ 1/ $\alpha$ 2 (red) and proglucagon (green) antibody in iGluAMPKdKO mice versus WT littermates, (B) percentage of  $\alpha$ -cells co-staining for AMPK and glucagon. (C) Immunofluorescent staining of ileum slices staining with the above antibodies to quantify AMPK knock-down in enteroendocrine cells (D),  $n = 3$  mice/genotype (all male). Body weight was measured weekly in (E) male and (F) female iGluAMPKdKO and WT mice, weeks 4–20.  $N = 9–11$  mice/genotype,  $**P < 0.01$ ,  $***P < 0.001$ , by unpaired Student's  $t$ -test. Data are expressed as means  $\pm$  SEM.

doi:10.1371/journal.pone.0149549.g001

When animals were given free access to food, glycaemia was unchanged in iGluAMPKdKO mice *versus* WT littermates (Fig 2A and 2B). During oral glucose tolerance tests (OGTT), glycaemia was found to be significantly improved in 10 week old male mice at the 30 min. time point ( $P < 0.01$ ) in iGluAMPKdKO mice compared to WT littermates ( $12.5 \pm 0.70$  mmol/l and  $17.3 \pm 1.48$  mmol/l, respectively; Fig 2C). Glucose tolerance was enhanced further in 15 week-old male mice 15, 30 and 45 min. after gavage ( $P < 0.05$ , 0.01, 0.05, respectively) in iGluAMPKdKO mice compared to WT littermates (15 min,  $13.8 \pm 0.64$  vs  $17.2 \pm 0.97$  mmol/l; 30 min:  $13.9 \pm 0.97$  vs  $18.4 \pm 0.94$  mmol/l and 45 min,  $12.4 \pm 0.69$  vs  $15.9 \pm 1.02$  mmol/l, respectively; Fig 2E). Glucose tolerance was unchanged in female KO mice at both 10 and 15 weeks of age during OGTT (Fig 2D and 2F). Intraperitoneal glucose tolerance tests (IPGTTs) on the same cohorts of mice at 20 weeks revealed no significant differences (Fig 2G and 2H).

### AMPK $\alpha$ 1 and $\alpha$ 2 deletion in proglucagon-expressing cells has no effect on insulin tolerance or circulating insulin levels

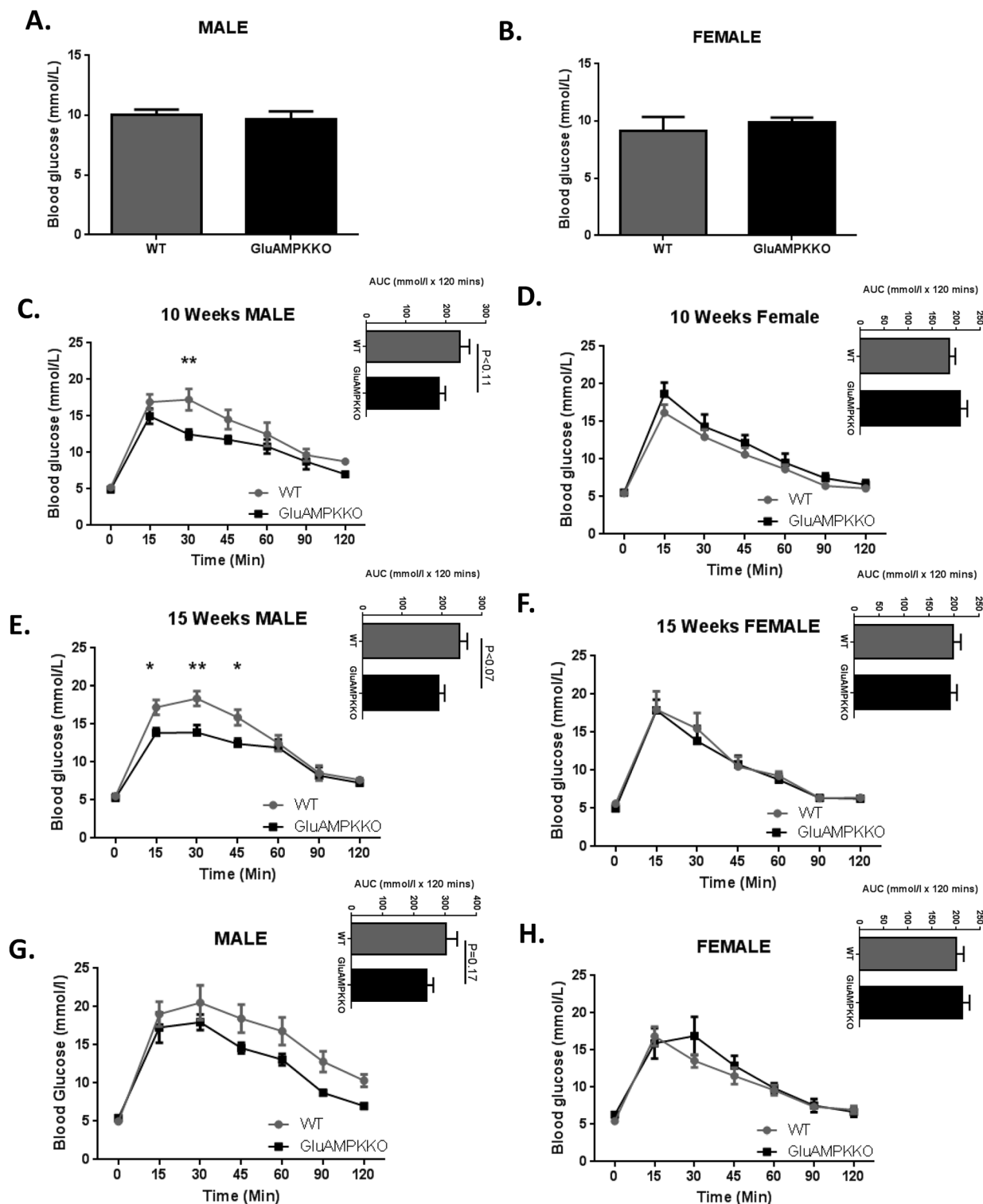
Insulin tolerance tests performed in 10 and 15 week-old male and female mice (Fig 3A–3D) revealed no differences in insulin sensitivity between iGluAMPKdKO mice and their WT littermates except at the 60 min. time point in 10 week-old male mice. Here, blood glucose was significantly higher ( $P < 0.01$ ) in iGluAMPKdKO mice compared to WT animals ( $10.6 \pm 1.52$  and  $7.12 \pm 0.36$  mmol/l, respectively), possibly indicating an enhanced counter-regulatory response in the null mice.

Levels of insulin in the plasma of these mice fed *ad libitum* or after overnight fast (Fig 3E and 3F) revealed no changes in insulin levels between iGluAMPKdKO mice and WT littermate controls (Fed:  $2.07 \pm 0.39$  ng/ml,  $2.43 \pm 0.18$  ng/ml, respectively; Fasted:  $1.67 \pm 0.06$  ng/ml,  $1.21$  ng/ml  $\pm 0.46$ , respectively). Plasma insulin levels were also not different between null and control mice when measured 0, 15 and 30 min. after glucose injection (Fig 3G).

### Deletion of AMPK $\alpha$ 1 and $\alpha$ 2 in proglucagon-expressing cells results in increased L-cell mass and elevated circulating GLP-1 levels

The improvement in oral (Fig 2B–2E) but not intraperitoneal (Fig 2G and 2H) glucose tolerance is suggestive of an improved incretin response in iGluAMPKdKO mice *versus* controls. To determine whether this may, at least in part, reflect elevated GLP-1 secretion from L-cells in the former, L-cell mass and circulating GLP-1 levels were measured. Sections of the ileum of iGluAMPKdKO mice and WT littermates were stained with anti-proglucagon antibody, allowing the proportion of proglucagon-expressing cells to be determined (Fig 4A and 4B). This approach revealed an 80% increase in overall L-cell mass in male iGluAMPKdKO ( $0.09\% \pm 0.02$ ) *versus* WT littermates ( $0.05\% \pm 0.01$ ,  $n = 3$  mice/genotype, 5 slides/mouse and 15–30 islets counted/slide;  $P < 0.05$ ). A tendency towards an increase in individual cell number per unit area ( $0.015 \pm 0.002$  for KO and  $0.009 \pm 0.002 \mu\text{m}^{-2}$  for WT,  $p = 0.06$ ,  $n = 3$  animals/genotype) was also apparent (Fig 4C). No differences in overall epithelial cell number/unit area, as estimated through nuclear staining, were detected (Fig 4D).

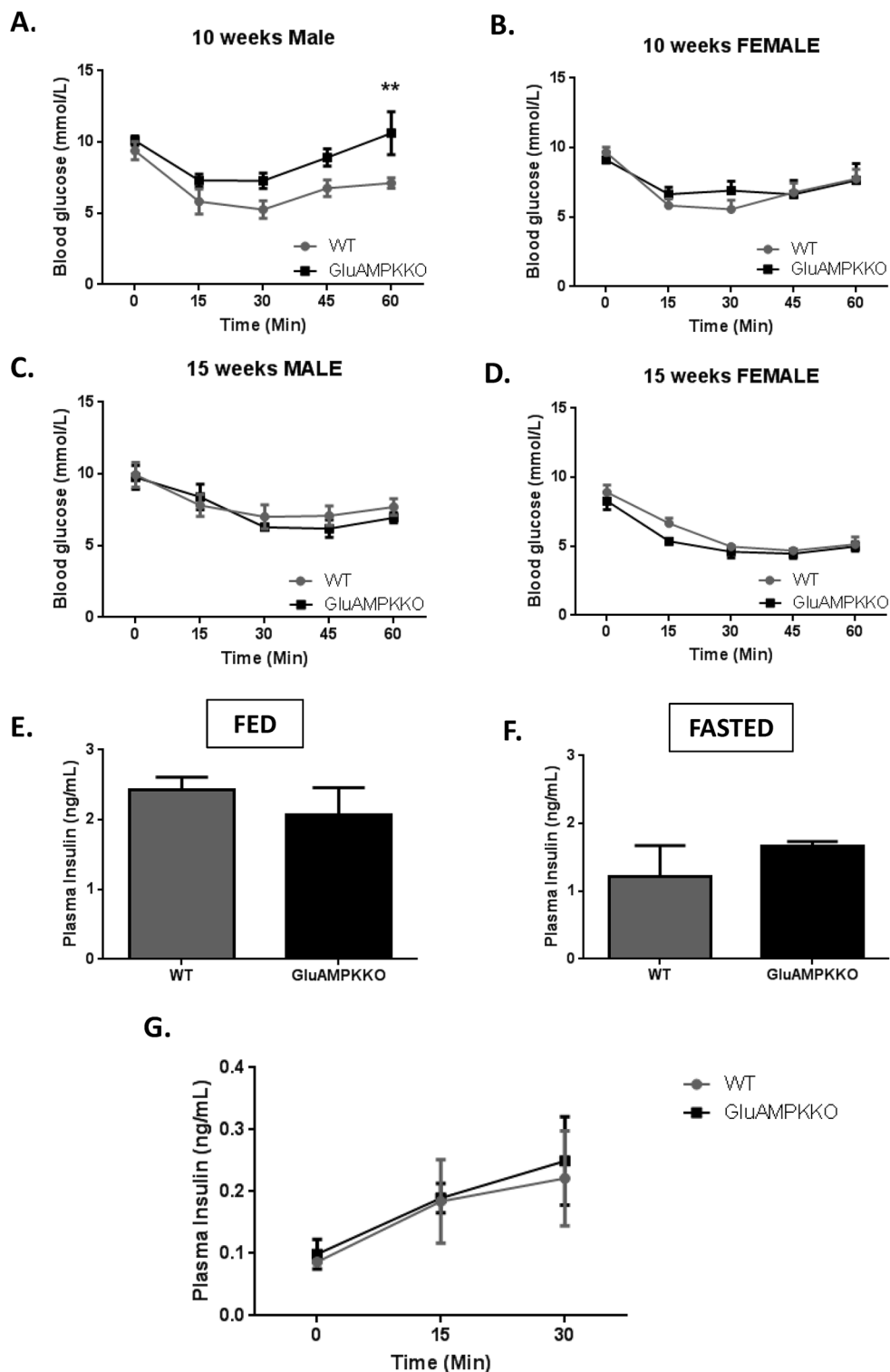
Plasma GLP-1 levels were also measured in iGluAMPKdKO mice and littermate controls and were significantly elevated in male KO mice *versus* controls both after *ad libitum* feeding (KO,  $34.33 \pm 0.72$  pg/ml *versus* WT,  $15.1 \pm 2.25$  pg/ml,  $n = 3$  mice/ genotype,  $p < 0.001$ , Fig 4E) or after overnight fast (KO  $14.6 \pm 1.95$  pg/ml vs WT  $5.47 \pm 1.17$  pg/ml, Fig 4F). By contrast, for female mice, no differences between iGluAMPKdKO and control animals were observed in the fed state (KO,  $13.9 \pm 7.83$  pg/ml *versus* WT,  $16.4 \pm 2.19$  pg/ml,  $n = 3$  mice/genotype,  $p > 0.05$ , Fig 4G) whereas a modest elevation in plasma GLP-1 was measured in the fasted state (KO,  $10.0 \pm 0.88$  pg/ml vs WT,  $6.77 \pm 0.37$  pg/ml, respectively,  $p < 0.05$ , Fig 4H).



**Fig 2. AMPK $\alpha$ 1 and - $\alpha$ 2 deletion in proglucagon expressing cells improves glucose tolerance after oral administration of glucose in male mice but is unchanged after glucose injection.** (A,B) Glycaemia was measured in male and female iGluAMPKdKO and WT mice when fed *ad libitum*.  $n = 6-9$  mice/genotype/sex. (C,D) Glucose was administered using oral gavage (1 g/kg) after mice were fasted overnight and blood glucose levels measured at 0, 15, 30, 45, 60, 90 and 120 min. after glucose administration in 10 week old male and female mice. (E, F) Oral glucose tolerance tests repeated in 15 week old male and female iGluAMPKdKO and WT mice. Area under the curve (AUC) is displayed at the top right of panels. (G,H) IPGTTs were performed on 20 week old male and female mice.  $n = 5-9$  mice/sex/genotype, \* $P < 0.05$ , \*\* $P < 0.01$ , by 2-way ANOVA. Data are expressed as means  $\pm$  SEM.

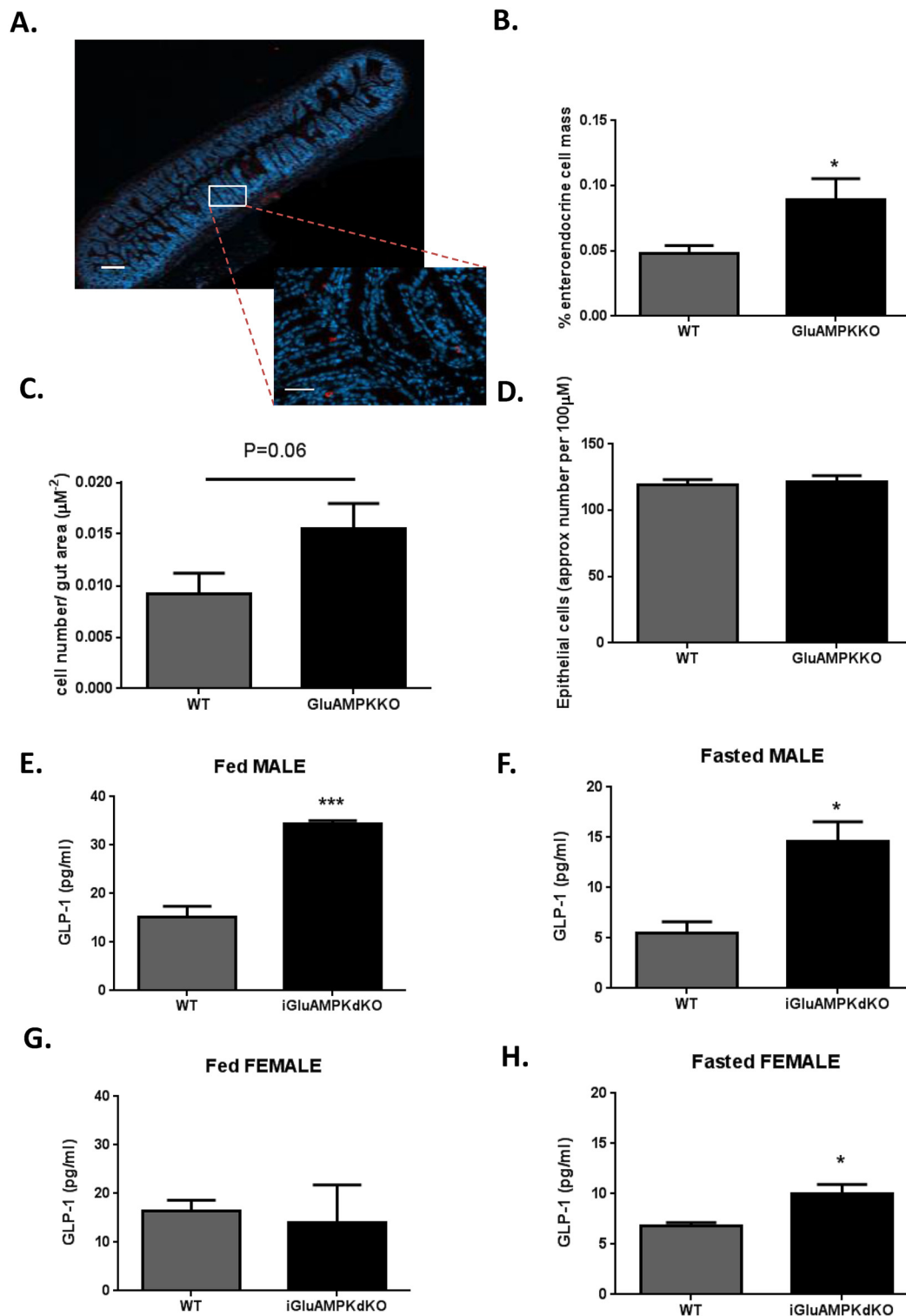
doi:10.1371/journal.pone.0149549.g002





**Fig 3. AMPK $\alpha$ 1 and - $\alpha$ 2 deletion has no or minor effects on glycaemia after insulin injection, or on circulating insulin levels.** (A,B) Intraperitoneal insulin tolerance tests (ITTs) were performed on 10 week old male and female mice after mice after fasting for 5 h. Blood glucose levels were measured 0, 15, 30, 45 and 60 min. after insulin injection. (C,D) ITTs were repeated on 15 week old male and female mice,  $n = 5-9$  mice/sex/genotype. \*\* $P < 0.01$ , by 2-way ANOVA. (E,F) Plasma insulin levels were measured in iGluAMPKdKO and WT mice when fed as normal or after being fasted overnight and (G) at 0, 15 and 30 min. after glucose injection.  $n = 3$  mice/genotype, mixed male and female. Data expressed as means  $\pm$  SEM.

doi:10.1371/journal.pone.0149549.g003



**Fig 4. L-cell mass and GLP-1 secretion are enhanced in iGluAMPKdKO mice.** (A) Immunohistochemical analysis of an ileum section from an iGluAMPKdKO mouse; red staining represents proglucagon (GLP-1) staining in an enteroendocrine cell, dotted lines represent magnified section. (B) Percentage of proglucagon staining cells in the ileum. (C) L-cell count/area of gut,  $P = 0.06$  by unpaired Student's t-test. (D) Approximate endothelial cell count for the whole gut section;  $n = 3$  mice/genotype (all male). (E, G) GLP-1 levels in the plasma of fed or fasted male and (F, H) female mice,  $n = 3$  mice/sex/genotype. \* $P < 0.05$ , \*\* $P < 0.01$ , \*\*\* $P < 0.001$  by unpaired Student's t-test. Data are expressed as means  $\pm$  SEM.

doi:10.1371/journal.pone.0149549.g004

## AMPK $\alpha$ 1, - $\alpha$ 2 deletion in pancreatic alpha-cells has no effect on alpha-cell mass or glucagon secretion

To investigate whether AMPK $\alpha$ 1 and  $\alpha$ 2 play a role in pancreatic islet cell growth or survival, pancreatic sections from male mice were co-stained with insulin and glucagon in order to measure pancreatic beta- and alpha-cell mass, respectively, as well as the alpha:beta cell ratio (Fig 5A–5D). Though the alpha:beta cell ratio was increased in AMPK $\alpha$ 1 $\alpha$ 2KO mice *versus* WT littermates ( $P < 0.05$ ), no changes were found in overall alpha- or beta-cell mass.

We next determined whether deleting the AMPK $\alpha$  subunits in pancreatic alpha-cells might affect glucagon secretion *in vitro*. Here, isolated islets were incubated in 0.5, 3 or 10 mmol/l glucose (Fig 5E). Similar to alpha-cell mass, AMPK $\alpha$ 1/ $\alpha$ 2 deletion exerted no effect on glucagon secretion. Plasma glucagon levels were measured in fed and fasted mice (Fig 5F and 5G) and, consistent with earlier results [30] using an alternative proglucagon promoter, were unaffected in iGluAMPKdKO mice in comparison to WT littermates.

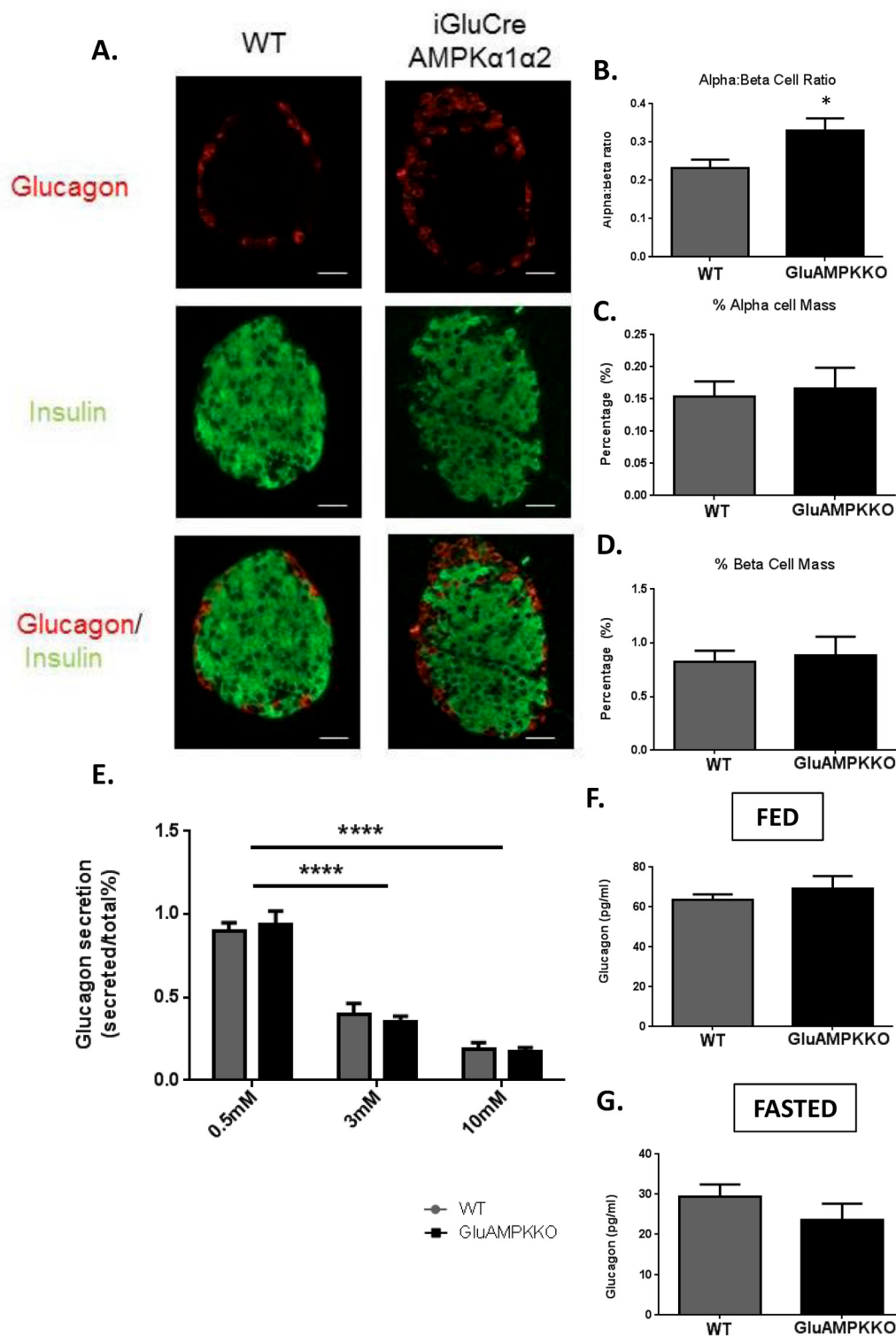
## Discussion

The first aim of this study was to determine whether deleting AMPK $\alpha$ 1 and  $\alpha$ 2 in proglucagon-expressing cells would phenocopy the effect of deleting LKB1 in these cells using the same iGluCre transgene [33] and produce large gastro-duodenal PJS like-polyps. In marked contrast to our earlier findings [33], iGluAMPKdKO mice showed no signs of tumour development or premature death, suggesting that members of the AMPK-related kinase (AMPK-RK) family [32], rather than canonical AMPK  $\alpha$ 1 or  $\alpha$ 2-containing complexes, are responsible for the suppression of polyposis from proglucagon-expressing cells [37]. Possible candidates include Par1b/MARK2 [38], which controls cell polarity and is implicated in beta cell hyperplasia after LKB1 deletion [39,40], as well as NUA1/SNARK [41] and NUA2 [42].

## Deletion of AMPK $\alpha$ 1 and $\alpha$ 2 in L-cells improves GLP-1 secretion and glucose tolerance

In further contrast to the effects of deleting LKB1 in proglucagon-expressing cells using the iGluCre deleter strain, male mice lacking both AMPK catalytic subunits in these cells, including enteroendocrine L-cells, displayed improved oral glucose tolerance (Fig 2C and 2E). Interestingly, glucose tolerance during IPGTT was not significantly affected in iGluAMPKdKO mice (Fig 2G and 2H), although it should be noted that the latter tests were performed in the same animals at a slightly later stage (at 20 *vs* 15 weeks of age). These findings suggest that the incretin response is enhanced in the iGluAMPKdKO model. Providing direct evidence for this view, GLP-1 release into the plasma was significantly increased in iGluAMPKdKO mice, as assessed in fed and fasted mice (Fig 4E–4H). Although we were not able to detect differences in fasting or fed plasma insulin levels between WT and KO mice (Fig 3E and 3F), nor altered plasma insulin during IPGTTs (Fig 3G), lower glucose levels were observed in male mice during OGTTs (Fig 2C and 2E) and are indicative of enhanced beta cell function, as expected given elevated circulating GLP-1 levels.

We have also considered the possibility that the above observations might suggest a local action of GLP-1 on enteric neurons close to the site of release which then initiates a paracrine loop to regulate hepatic glucose production [43]. However, in the latter study the acute action of metformin, an AMPK activator, in the duodenum was to *reduce* hepatic glucose production via an AMPK-dependent mechanism. Metformin has also previously been found to increase plasma active GLP-1 levels in wild-type rats [44], as well as in rats lacking dipeptidyl peptidase IV (DPPIV) [45], and to enhance GLP-1 secretion from a human-derived intestinal L-cell line



**Fig 5. AMPK $\alpha$ 1, $\alpha$ 2KO has no effect on  $\alpha$ -cell mass or glucagon secretion in male mice.** (A) Immunofluorescent staining of pancreatic sections using guinea pig anti-insulin (1:200; green) or rabbit anti-glucagon (1:100; red) antibodies from iGluAMPKdKO or WT mice. (B) Alpha:beta cell ratio, (C) % alpha-cell mass, (D) % beta-cell mass;  $n = 3$  mice/genotype (all male), (E) glucagon secretion, measured from 12 size-matched islets incubated in 0.5, 3 or 10 mmol/l glucose and measured using radioimmunoassay, (F,G) levels of glucagon in the plasma of iGluAMPKdKO and WT mice when fed or fasted overnight.  $n = 6$  mice/genotype, \* $P < 0.05$ , by Student's t-test; \*\*\*\* $P < 0.0001$  by 2-way ANOVA. Data are expressed as means  $\pm$  SEM.

doi:10.1371/journal.pone.0149549.g005

(NCI-H716) [46]. These observations argue for an acute stimulation of GLP-1 release in response to the biguanide. The apparent contrast between the present study and earlier findings [43] [45] may thus suggest that metformin acts (1) on GLP-1 secretion independently of AMPK, as recently reported in studies of hepatic gluconeogenesis [47], or (2) that there may be significant differences between the impact of acute and chronic activation of L-cell AMPK on a “gut-brain-liver axis”, with the latter acting chiefly to alter cell mass.

Interestingly, the above changes in oral glucose tolerance were apparent in male but not female mice and reflected more minor changes in circulating GLP-1 levels. Whilst the reasons for these differences must remain speculative, they may include greater variance in the measurements for females (e.g. due to reproductive cycles), differences in feeding patterns or sexual dimorphism in the expression of GLP-1, insulin or other receptors.

### AMPK $\alpha$ 1 and $\alpha$ 2 deletion from pancreatic alpha-cells does not alter alpha-cell mass or glucagon secretion but increases L-cell mass

In the present study no changes in alpha- or beta-cell mass were observed in iGluAMPKdKO mice consistent with previous findings using the shorter glucagon promoter-*Cre* to drive deletion in these cells [30]. Nonetheless, and reflecting the greater statistical power to detect small differences, we did observe a small increase in alpha to beta cell ratio in the null mice, suggesting some degree of hyperplasia (or hypertrophy) of alpha cells (or a decrease in in beta cell number/mass). Future studies, on larger cohorts, will be needed to explore these findings in more detail and might be supported by measurements of hepatic glucose output or pyruvate tolerance as further estimates of glucagon action.

AMPK is a regulator of the mTOR complex, that goes on to phosphorylate the mTORC1 components Raptor and TSC2 [48] which are involved in the regulation of cell size [49] and proliferation. Interestingly, a clear increase in total L-cell mass, expressed as a fraction of intestinal surface, was apparent (Fig 4A and 4B) alongside a strong tendency towards an increase, of similar magnitude, in the number of L-cells per unit area. Future investigations will be required to explore the mechanisms involved, which might conceivably include the activation of mTORC1 as a result of AMPK deletion. Additionally, Carbohydrate Response Element Binding Protein (ChREBP), a transcriptional regulator of proglucagon gene expression and carbohydrate metabolism in L-cells [50], is also inhibited by AMPK [51], and may further increase GLP-1 synthesis and secretion.

Consistent with previous findings [30] in which both AMPK  $\alpha$ 1 and  $\alpha$ 2 were deleted in the alpha-cell using a shorter (1.6 kB) preproglucagon promoter [52] to drive *Cre* expression, we obtained no evidence for changes in circulating glucagon levels after ablation of AMPK activity. Of note, the longer proglucagon promoter used in the present study deletes additionally in enteroendocrine L- and probably other proglucagon-expressing cells throughout the body (e.g. in the brain stem and olfactory bulb) [35]. Thus, we show that deleting both AMPK  $\alpha$ -subunits in pancreatic alpha-cells has little effect on glucagon release in response to low glucose levels *in vitro* or *in vivo*. Likewise, in the iGluAMPKdKO mice, glucagon secretion was not enhanced in iGluAMPKdKO mice *versus* controls during hypoglycaemia induced by insulin injection (results not shown). It should be noted, however, that when AMPK  $\alpha$ 1, but not  $\alpha$ 2, was deleted selectively in the alpha-cell with the shorter proglucagon promoter-driven *Cre*, impaired glucagon secretion was observed both *in vivo* during hypoglycemic clamp and *in vitro* [30]. Furthermore, AMPK activation was previously found to regulate glucagon secretion *in vitro* in a study using clonal  $\alpha$ TC1-9 cells [29]. In the latter study, AMPK expression was stimulated using pharmacological agents such as metformin, and resulted in enhanced glucagon secretion at both high and low glucose concentrations. One possible explanation for the apparent



discrepancy between the present and earlier studies [30] is that complete inactivation of AMPK in the  $\alpha$ -cell *in vivo* leads to more robust compensatory changes than seen after AMPK $\alpha$ 1 deletion alone.

## Conclusions

Whilst not required prevent polyposis [33], AMPK limits expansion of the L-cell population and GLP-1 release, processes which may provide a new therapeutic avenue for the treatment of T2D.

## Supporting Information

**S1 Fig. AMPK expression is unaffected in  $\beta$ -cells from iGluAMPKdKO mice.**  
(TIFF)

**S2 Fig. Ampk $\alpha$ 1 and - $\alpha$ 2 gene expression in purified L-cells and control non-fluorescent cells from the upper small intestine, lower small intestine and colon.**  
(TIFF)

**S1 File. Supplementary Figure Legends.**  
(DOCX)

**S2 File. Supplementary Methods.**  
(DOCX)

## Acknowledgments

We thank Professors David Carling and Graham Williams (Imperial College) for useful discussion and Dr Isabelle Leclerc with support in animal maintenance.

## Author Contributions

Conceived and designed the experiments: GAR SZ-V SRB. Performed the experiments: SRS HP SZ-V. Analyzed the data: FR FMG GAR. Contributed reagents/materials/analysis tools: MF BV FMG. Wrote the paper: SRS GAR FMG BV.

## References

1. Meier JJ, Nuack MA (2015) Incretin-based therapies: where will we be 50 years from now? *Diabetologia* 58(8): 1745–1750. doi: [10.1007/s00125-015-3608-6](https://doi.org/10.1007/s00125-015-3608-6) PMID: [25994073](https://pubmed.ncbi.nlm.nih.gov/25994073/)
2. Holst JJ (2013) Enteroendocrine secretion of gut hormones in diabetes, obesity and after bariatric surgery. *Curr Opin Pharmacol* 13(6): 983–988. doi: [10.1016/j.coph.2013.09.014](https://doi.org/10.1016/j.coph.2013.09.014) PMID: [24161809](https://pubmed.ncbi.nlm.nih.gov/24161809/)
3. Drucker DJ (2015) Deciphering metabolic messages from the gut drives therapeutic innovation: the 2014 Banting Lecture. *Diabetes* 64(2): 317–326. doi: [10.2337/db14-1514](https://doi.org/10.2337/db14-1514) PMID: [25614665](https://pubmed.ncbi.nlm.nih.gov/25614665/)
4. Parker HE Gribble FM, Reimann F (2014) The role of gut endocrine cells in control of metabolism and appetite. *Exp Physiol* 99(9): 1116–1120. doi: [10.1113/expphysiol.2014.079764](https://doi.org/10.1113/expphysiol.2014.079764) PMID: [25210110](https://pubmed.ncbi.nlm.nih.gov/25210110/)
5. Heller RS A G (1995) Intra-islet regulation of hormone secretion by glucagon-like peptide-1-(7–36) amide. *Am J Physiol* 269(6 Pt 1): G852–860. PMID: [8572216](https://pubmed.ncbi.nlm.nih.gov/8572216/)
6. Gribble FM, Reimann F (2015) Enteroendocrine Cells: Chemosensors in the Intestinal Epithelium. *Annu Rev Physiol*.
7. Drucker DJ Nauck MA (2006) The incretin system: glucagon-like peptide-1 receptor agonists and dipeptidyl peptidase-4 inhibitors in type 2 diabetes. *Lancet* 368(9548): 1696–1705. PMID: [17098089](https://pubmed.ncbi.nlm.nih.gov/17098089/)
8. Light PE Manning-Fox J, Riedel MJ, Wheeler MB (2002) Glucagon-like peptide-1 inhibits pancreatic ATP-sensitive potassium channels via a protein kinase A- and ADP-dependent mechanism. *Mol Endocrinol* 16(9): 2135–2144. PMID: [12198249](https://pubmed.ncbi.nlm.nih.gov/12198249/)

9. Béguin P, Nagashima K, Nishimura M, Gonoi T, Seino S. (1999) PKA-mediated phosphorylation of the human K(ATP) channel: separate roles of Kir6.2 and SUR1 subunit phosphorylation. *EMBO J* 18(17): 4722–4732. PMID: [10469651](#)
10. Leech CA, Dzhura I, Chepurny OG, Kang G, Schwede F, Genieser HG, et al (2011) Molecular physiology of glucagon-like peptide-1 insulin secretagogue action in pancreatic  $\beta$  cells. *Prog Biophys Mol Biol* 107(2): 236–247. doi: [10.1016/j.pbiomolbio.2011.07.005](#) PMID: [21782840](#)
11. Hodson DJ, Mitchell RK, Bellomo EA, Sun G, Vinet L, Meda P, et al. (2013) Lipotoxicity disrupts incretin-regulated human beta cell connectivity. *J Clin Invest* 123: 4182–4194. doi: [10.1172/JCI68459](#) PMID: [24018562](#)
12. Hodson DJ, Mitchell RK, Marselli L, Pullen TJ, Gimeno Brias S, Semplici F, et al. (2014) ADCY5 couples glucose to insulin secretion in human islets. *Diabetes* 63: 3009–3021. doi: [10.2337/db13-1607](#) PMID: [24740569](#)
13. Lamont BJ, Li Y, Kwan E, Brown TJ, Gaisano H, Drucker DJ (2012) Pancreatic GLP-1 receptor activation is sufficient for incretin control of glucose metabolism in mice. *J Clin Invest* 122(1): 388–402. doi: [10.1172/JCI42497](#) PMID: [22182839](#)
14. Steinert RE, Beglinger C, Langhans W (2015) Intestinal GLP-1 and satiation-from man to rodents and back. *Int J Obes (Lond)*.
15. Donath MY, Burcelin R (2013) GLP-1 effects on islets: hormonal, neuronal, or paracrine? *Diabetes Care* 36 Suppl 2: S145–148. doi: [10.2337/dcS13-2015](#) PMID: [23882039](#)
16. Murlin JR, Clough H, Gibbs CBF, Stokes AM (1923) Aqueous extracts of the pancreas. I Influence on the carbohydrate metabolism of depancreatized animals. *J Biol Chem* 56: 253–296.
17. Müller WA, Faloona GR, Aguilar-Parada E, Unger RH. (1970) Abnormal alpha-cell function in diabetes. Response to carbohydrate and protein ingestion. *N Engl J Med* 283(3): 109–115. PMID: [4912452](#)
18. Cryer PE (2002) The pathophysiology of hypoglycaemia in diabetes. *Diabetes Nutr Metab* 15(5): 330–333. PMID: [12625480](#)
19. Shaw RJ, Lamia KA, Vasquez D, Koo SH, Bardeesy N, Depinho RA, et al. (2005) The kinase LKB1 mediates glucose homeostasis in liver and therapeutic effects of metformin. *Science* 310(5754): 1642–1646. PMID: [16308421](#)
20. Kahn BB, Alquier T, Carling D, Hardie DG. (2005) AMP-activated protein kinase: ancient energy gauge provides clues to modern understanding of metabolism. *Cell Metab* 1(1): 15–25. PMID: [16054041](#)
21. Kemp BE, Stapleton D, Campbell DJ, Chen ZP, Murthy S, Walter M, et al (2003) AMP-activated protein kinase, super metabolic regulator. *Biochem Soc Trans* 31(Pt 1): 162–168.
22. Stapleton D, Woollatt E, Mitchelhill KI, Nicholl JK, Fernandez CS, Michell BJ, et al. (1997) AMP-activated protein kinase isoenzyme family: subunit structure and chromosomal location. *FEBS Lett* 409(3): 452–456. PMID: [9224708](#)
23. Hardie DG, Scott JW, Pan DA, Hudson ER. (2003) Management of cellular energy by the AMP-activated protein kinase system. *FEBS Lett* 546(1): 113–120. PMID: [12829246](#)
24. Xiao B, Sanders MJ, Underwood E, Heath R, Mayer FV, Carmena D, et al. (2011) Structure of mammalian AMPK and its regulation by ADP. *Nature* 472(7342): 230–233. doi: [10.1038/nature09932](#) PMID: [21399626](#)
25. Hawley SA, Pan DA, Mustard KJ, Ross L, Bain J, Edelman AM, et al (2005) Calmodulin-dependent protein kinase kinase-beta is an alternative upstream kinase for AMP-activated protein kinase. *Cell Metab* 2(1): 9–19. PMID: [16054095](#)
26. Hawley SA, Boudeau J, Reid JL, Mustard KJ, Udd L, Mäkelä TP, et al (2003) Complexes between the LKB1 tumor suppressor, STRAD alpha/beta and MO25 alpha/beta are upstream kinases in the AMP-activated protein kinase cascade. *J Biol* 2(4): 28. PMID: [14511394](#)
27. da Silva Xavier G, Leclerc I, Varadi A, Tsuboi T, Moule SK, Rutter GA. (2003) Role for AMP-activated protein kinase in glucose-stimulated insulin secretion and preproinsulin gene expression. *Biochem J* 371(Pt 3): 761–774. PMID: [12589707](#)
28. Sun G, Tarasov AI, McGinty J, McDonald A, da Silva Xavier G, Gorman T, et al (2010) Ablation of AMP-activated protein kinase alpha1 and alpha2 from mouse pancreatic beta cells and RIP2.Cre neurons suppresses insulin release in vivo. *Diabetologia* 53(5): 924–936. doi: [10.1007/s00125-010-1692-1](#) PMID: [20221584](#)
29. Leclerc I, Sun G, Morris C, Fernandez-Millan E, Nyirenda M, Rutter GA. (2011) AMP-activated protein kinase regulates glucagon secretion from mouse pancreatic alpha cells. *Diabetologia* 54(1): 125–134. doi: [10.1007/s00125-010-1929-z](#) PMID: [20938634](#)
30. Sun G, da Silva Xavier G, Gorman T, Priest C, Solomou A, Hodson DJ, et al (2015) LKB1 and AMPK $\alpha$ 1 are required in pancreatic alpha cells for the normal regulation of glucagon secretion and responses to hypoglycemia. *Mol Metab* 4(4): 277–286. doi: [10.1016/j.molmet.2015.01.006](#) PMID: [25830091](#)

31. Giardiello FM, Welsh SB, Hamilton SR, Offerhaus GJ, Gittelsohn AM, Booker SV, et al (1987) Increased risk of cancer in the Peutz-Jeghers syndrome. *N Engl J Med* 316(24): 1511–1514. PMID: [3587280](#)
32. Lizcano JM, Goransson O, Toth R, Deak M, Morrice NA, Boudeau J, et al (2004) LKB1 is a master kinase that activates 13 kinases of the AMPK subfamily, including MARK/PAR-1. *EMBO J* 23(4): 833–843. PMID: [14976552](#)
33. Zac-Varghese S, Trapp S, Richards P, Sayers S, Sun G, Bloom SR, et al (2014) The Peutz-Jeghers kinase LKB1 suppresses polyp growth from intestinal cells of a proglucagon-expressing lineage in mice. *Dis Model Mech* 7(11): 1275–1286. doi: [10.1242/dmm.014720](#) PMID: [25190708](#)
34. Parker HE, Adriaenssens A, Rogers G, Richards P, Koepsell H, Reimann F, et al (2012) Predominant role of active versus facilitative glucose transport for glucagon-like peptide-1 secretion. *Diabetologia* 55(9): 2445–2455. doi: [10.1007/s00125-012-2585-2](#) PMID: [22638549](#)
35. Soedling H, Hodson DJ, Adriaenssens AE, Gribble FM, Reimann F, Trapp S, et al (2015) Limited impact on glucose homeostasis of leptin receptor deletion from insulin- or proglucagon-expressing cells. *Mol Metab* 4(9): 619–630. doi: [10.1016/j.molmet.2015.06.007](#) PMID: [26413468](#)
36. Ravier MA, and Rutter G. A. (2010) Isolation and culture of mouse pancreatic islets for ex vivo imaging studies with trappable or recombinant fluorescent probes. *Methods Mol Biol* 633: 171–184. doi: [10.1007/978-1-59745-019-5\\_12](#) PMID: [20204627](#)
37. Monteverde T, Muthalagu N, Port J, and Murphy DJ. (2015) Evidence of cancer-promoting roles for AMPK and related kinases. *FEBS J*.
38. Cohen D, Tian Y, Müsch A. (2007) Par1b promotes hepatic-type lumen polarity in Madin Darby canine kidney cells via myosin II- and E-cadherin-dependent signaling. *Mol Biol Cell* 18(6): 2203–2215. PMID: [17409351](#)
39. Granot Z, Swisa A, Magenheimer J, Stolovich-Rain M, Fujimoto W, Manduchi E, et al (2009) LKB1 regulates pancreatic beta cell size, polarity, and function. *Cell Metab* 10(4): 296–308. doi: [10.1016/j.cmet.2009.08.010](#) PMID: [19808022](#)
40. Fu A., Ng AC, Depatie C., Wijesekara N., He Y., Wang G. S., et al (2009) Loss of Lkb1 in adult beta cells increases beta cell mass and enhances glucose tolerance in mice. *Cell Metabolism* 10: 285–295. doi: [10.1016/j.cmet.2009.08.008](#) PMID: [19808021](#)
41. Kusakai G, Suzuki A, Ogura T, Kaminishi M, Esumi H (2004) Strong association of ARK5 with tumor invasion and metastasis. *J Exp Clin Cancer Res* 23(2): 263–268. PMID: [15354411](#)
42. Namiki T, Tanemura A, Valencia JC, Coelho SG, Passeron T, Kawaguchi M, et al (2011) AMP kinase-related kinase NUA2 affects tumor growth, migration, and clinical outcome of human melanoma. *Proc Natl Acad Sci U S A* 108(16): 6597–6602. doi: [10.1073/pnas.1007694108](#) PMID: [21460252](#)
43. Duca FA, Cote CD, Rasmussen BA, Zadeh-Tahmasebi M, Rutter GA, Filippi BM, et al (2015) Metformin activates a duodenal Ampk-dependent pathway to lower hepatic glucose production in rats. *Nat Medicine* 21(5): 506–511.
44. Mulherin AJ, Oh AH, Kim H, Grieco A, Lauffer LM, and Brubaker PL (2011) Mechanisms underlying metformin-induced secretion of glucagon-like peptide-1 from the intestinal L cell. *Endocrinology* 152: 4610–4619. doi: [10.1210/en.2011-1485](#) Epub 2011 Oct 4614. doi: [10.1210/en.2011-1485](#) PMID: [21971158](#)
45. Yasuda N, Inoue T, Nagakura T, Yamazaki K, Kira K, Saeki T, et al (2002) Enhanced secretion of glucagon-like peptide 1 by biguanide compounds. *Biochem Biophys Res Commun* 298: 779–784. PMID: [12419322](#)
46. Kim MH, Jee JH, Park S, Lee MS, Kim KW, and Lee MK (2014) Metformin enhances glucagon-like peptide 1 via cooperation between insulin and Wnt signaling. *J Endocrinol* 220: 117–128. doi: [10.1530/JOE-1513-0381](#) PMID: [24233023](#)
47. Foretz M, Hebrard S, Leclerc J, Zarrinpashneh E, Soty M, Mithieux G, et al. (2010) Metformin inhibits hepatic gluconeogenesis in mice independently of the LKB1/AMPK pathway via a decrease in hepatic energy state. *J Clin Invest* 120: 2355–2369. doi: [10.1172/JCI40671](#) Epub 2010 Jun 40623. doi: [10.1172/JCI40671](#) PMID: [20577053](#)
48. Kennedy HJ, Pouli AE, Ainscow EK, Jouaville LS, Rizzuto R, Rutter GA. (1999) Glucose generates sub-plasma membrane ATP microdomains in single islet beta-cells. Potential role for strategically located mitochondria. *J Biol Chem* 274(19): 13281–13291. PMID: [10224088](#)
49. Olsen HL, Theander S, Bokvist K, Buschard K, Wollheim CB, Gromada J. (2005) Glucose stimulates glucagon release in single rat alpha-cells by mechanisms that mirror the stimulus-secretion coupling in beta-cells. *Endocrinology* 146(11): 4861–4870. PMID: [16081632](#)

50. Trabelsi MS, Daoudi M, Prawitt J, Ducastel S, Touche V, Sayin SI, et al (2015) Farnesoid X receptor inhibits glucagon-like peptide-1 production by enteroendocrine L cells. *Nat Commun* 6: 7629. doi: [10.1038/ncomms8629](https://doi.org/10.1038/ncomms8629) PMID: [26134028](https://pubmed.ncbi.nlm.nih.gov/26134028/)
51. Kawaguchi T, Osatomi K, Yamashita H, Kabashima T, Uyeda K (2002) Mechanism for fatty acid "sparing" effect on glucose-induced transcription: regulation of carbohydrate-responsive element-binding protein by AMP-activated protein kinase. *J Biol Chem* 277(6): 3829–3835. PMID: [11724780](https://pubmed.ncbi.nlm.nih.gov/11724780/)
52. Herrera PL (2000) Adult insulin- and glucagon-producing cells differentiate from two independent cell lineages. *Development* 127(11): 2317–2322. PMID: [10804174](https://pubmed.ncbi.nlm.nih.gov/10804174/)