

A longitudinal study of non-medical determinants of adherence to R-CHOP therapy for diffuse large B-cell lymphoma: implication for survival

Cécile Borel, Sébastien Lamy, Gisèle Compaci, Christian Récher, Pauline Jeanneau, Jean Claude Nogaro, Eric Bauvin, Fabien Despas, Cyrille Delpierre, Guy Laurent

► **To cite this version:**

Cécile Borel, Sébastien Lamy, Gisèle Compaci, Christian Récher, Pauline Jeanneau, et al.. A longitudinal study of non-medical determinants of adherence to R-CHOP therapy for diffuse large B-cell lymphoma: implication for survival. BMC Cancer, BioMed Central, 2015, 15 (1), pp.288. 10.1186/s12885-015-1287-9 . inserm-01264475

HAL Id: inserm-01264475

<https://www.hal.inserm.fr/inserm-01264475>

Submitted on 29 Jan 2016

HAL is a multi-disciplinary open access archive for the deposit and dissemination of scientific research documents, whether they are published or not. The documents may come from teaching and research institutions in France or abroad, or from public or private research centers.

L'archive ouverte pluridisciplinaire **HAL**, est destinée au dépôt et à la diffusion de documents scientifiques de niveau recherche, publiés ou non, émanant des établissements d'enseignement et de recherche français ou étrangers, des laboratoires publics ou privés.

RESEARCH ARTICLE

Open Access

A longitudinal study of non-medical determinants of adherence to R-CHOP therapy for diffuse large B-cell lymphoma: implication for survival

Cécile Borel^{1,2†}, Sébastien Lamy^{2,3,4*†}, Gisèle Compaci¹, Christian Récher^{1,2,6}, Pauline Jeanneau⁴, Jean Claude Nogaró¹, Eric Bauvin^{3,5}, Fabien Despas^{2,3,4}, Cyrille Delpierre^{2,3} and Guy Laurent^{1,2,6}

Abstract

Background: Adherence to therapy has been established for years as a critical parameter for clinical benefit in medical oncology. This study aimed to assess, in the current practice, the influence of the socio-demographical characteristics and the place of treatment on treatment adherence and overall survival among diffuse large B-cell lymphoma patients.

Methods: We analysed data from 380 patients enrolled in a French multi-centre regional cohort, with diffuse large B-cell lymphoma receiving first-line treatment with R-CHOP (rituximab, cyclophosphamide, doxorubicin, vincristine, prednisone) or R-CHOP-like regimens. Direct examination of administrative and medical records yielded the date of death. We studied the influence of patients' socio-demographic characteristics and place of treatment on the treatment adherence and overall survival, adjusted for baseline clinical characteristics. Treatment adherence was measured by the ratio between received and planned dose Intensity (DI), called relative DI (RDI) categorized in "lesser than 85%" and "at least 85%".

Results: During the follow-up, among the final sample 70 patients had RDI lesser than 85% and 94 deceased. Multivariate models showed that advanced age, poor international prognosis index (IPI) and treatment with R-CHOP 14 favoured RDI lesser than 85%. The treatment in a public academic centre favoured RDI greater than or equal to 85%. Poor adherence to treatment was strongly associated with poor overall survival whereas being treated in private centres was linked to better overall survival, after adjusting for confounders. No socioeconomic gradient was found on both adherence to treatment and overall survival.

Conclusions: These results reinforce adherence to treatment as a critical parameter for clinical benefit among diffuse large B-cell lymphoma patients under R-CHOP. The place of treatment, but not the socioeconomic status of these patients, impacted both RDI and overall survival

Keywords: Treatment adherence, Relative dose-intensity, Lymphoma, Non-medical determinant of health, Overall survival

* Correspondence: sebastien.lamy@inserm.fr

†Equal contributors

²University of Toulouse III Paul Sabatier, Toulouse, France

³INSERM UMR1027 (The French National Institute of Health and Medical Research), Toulouse, France

Full list of author information is available at the end of the article

Background

Diffuse large B-cell lymphoma (DLBCL) is one of the most frequent histological subtypes among Non-Hodgkin's lymphomas (NHL) [1]. DLBCL course is naturally aggressive due to rapid tumour progression, visceral propagation, and metabolic complications related to lysis syndrome. However, DLBCL is a chemosensitive disease for which anthracyclin-based chemotherapy with CHOP was found to be effective since its introduction in the late seventies [2]. During the last decade, chemotherapy further improved through the development of immunochemotherapy consisting in the addition of rituximab (R) to CHOP (rituximab, cyclophosphamide, doxorubicin, vincristine, prednisone) or CHOP-derived regimens [3,4]. R-CHOP administered each 21 days (R-CHOP21) has become the standard for front-line treatment for DLBCL based on the pivotal LNH-98-5 study of the Grouped' Etude des Lymphomes de l'Adulte (GELA) [3]. However, some variants of treatment have been designed in order to increase CHOP intensity by shortening the intercourse period, such as the R-CHOP14 protocol (given each 14 days) promoted by the German Lymphoma Study Group, and/or by increasing doses such as the R-ACVBP (rituximab, doxorubicin, cyclophosphamide, vindesine, bleomycin and prednisone) protocol derived from the GELA studies. In the GELA network, despite its higher toxicity compared to CHOP, R-ACVBP has become the standard for young patients with high international prognosis index (IPI) scores [5]. Finally, low-intensity chemotherapy, such as R-mini-CHOP, has been developed in elderly patients with age older than 80 years and was found to be tolerable and reasonably effective in this context [6].

In spite of adaptation to age and supportive care, including widespread use of hematopoietic growth factors (HGF), R-CHOP and R-CHOP derived protocols induce significant toxicities with life-threatening complications, like febrile neutropenia, sepsis and severe gastro-intestinal toxicities. Treatment-related mortality (TRM) remains relatively low in younger patients (2-5%) but could reach up to 8% for patients older than 60 years-old [3,7,8]. Intolerance to treatment often results in reducing treatment intensity, and consequently, non-adherence to the treatment protocol. Adherence to a chemotherapy regimen can be measured either by the ratio between the number of cycles administered and planned, or by the relative dose-intensity (RDI) which is the amount of drug delivered per time unit, compared to doses defined in the treatment protocol [9]. Dose concession is considered as a key issue in the treatment of patients with DLBCL [9-14].

The influence of RDI on outcome in CHOP therapy was first described by Epelbaum and co-workers more than 20 years ago with significant higher response rates for DLBCL patients who presented a better adherence to treatment [15]. Following this pioneer study, several

reports have confirmed that higher RDI correlated with prolonged survival among NHL [11], including DLBCL [9,10,15,16]. Other studies found that poor treatment adherence assessed by the RDI was, besides age and IPI, one of the most potent predictors for survival [10,12]. The introduction of rituximab at the end of the 90s has reopened this question as two studies showed that, in DLBCL treated with R-CHOP, treatment adherence correlated with prolonged survival in multivariate analysis with several cut-offs of RDI [13,14]. Factors predicting RDI have been already identified in at least five cohort studies listed in a recent review. The most significant predictors were age older than 60–65 years, followed by of the Eastern Cooperative Oncology Group performance (ECOG) status, type of RCHOP therapy (ACVBP versus standard CHOP), IPI and use of G-CSF [17].

Besides such parameters related to patient physical characteristics or to the disease, the socioeconomic status (SES) and the place of treatment might also interfere with RDI. Indeed, some socioeconomic characteristics, as the level of education and the occupational status, have already been shown to be associated with treatment access and survival among patient with NHL [18-21]. Although these disparities could not be entirely related to chemotherapy administration, they may reflect differences in healthcare quality level and therefore, raise the possibility that the administration of chemotherapy can be also affected. Alternatively, since it has been shown that the place of treatment (academic versus community centre) may also influence overall survival of DLBCL patients [22], it could also be possible that this parameter influences the RDI.

In this study, we investigate the adherence to chemotherapy in current practice in a French health care system in a prospective cohort of patients treated for DLBCL with R-CHOP or R-CHOP derived regimens. More specifically, we study treatment adherence determinants by distinguishing the clinical characteristics, the socio-demographical characteristics of patients including their socioeconomic status, the place of treatment. Finally, we study the association between RDI and mortality.

Methods

Study design and population

This work is based on data from an ongoing prospective cohort of DLBCL patients in the French Midi-Pyrénées region, in the southwest of the country: the AMARE cohort. Patients were included if they received first-line treatment for DLBCL with R-CHOP or R-CHOP-like regimens from November 2006 without age restriction, in the main centres covered by the regional cancer network. Patients were excluded if they displayed central nervous system involvement, HIV infection, solid organ transplantation or previous documented indolent NHL.

All patients signed informed consent before inclusion in this network. The study was approved by the local ethical committee of the Toulouse University Hospital.

Data collection

Data were collected by one person through direct examination of administrative and medical records of the 418 patients treated between November 2006 and June 2011 (last follow up in June 2014). During the follow-up, information was gathered regarding treatment-related events and vital status, including the date of the events.

Socio-demographical characteristics of patients

Patients' characteristics included severe comorbidity (none; at least one among chronic or viral hepatitis, cardiovascular or metabolic disease, autoimmune disease or cancer) and social characteristics at diagnosis. The last one encompassed occupational status (active; inactive) and marital status (alone; not alone) at diagnosis. In addition, we used the European ecological deprivation index (EDI) built from patients' addresses as a proxy of their individual socioeconomic status [23]. The geographical units used were IRIS as defined by the National Institute for Statistics and Economic Studies (INSEE), whereby an IRIS represented the smallest geographical census unit available in France, including approximately 2000 individuals with relatively homogeneous social characteristics. The regional capital and other major towns are divided into several IRIS and small towns form one IRIS. A score of social deprivation has been attributed to each IRIS: the higher the score, the higher the level of social deprivation. We used quintile of social deprivation as a proxy of the individual socioeconomic status, the highest quintile corresponding to the lowest socioeconomic status [23].

Clinical characteristics

At diagnosis were collected: age (coded in tertile in our models), gender, the presence or absence of systemic (B) symptoms; the Ann Arbor stage (localized (Ann Arbor stage I or II) or advanced (Ann Arbor stage III or IV); the serum Lactate Dehydrogenase (LDH) concentration (normal or elevated); the ECOG performance status (PS) (PS = 0 or 1 (good); PS = 2, 3, or 4 (poor)) [24] and the IPI [25,26]. As it already accounted for each of the three former prognosis factors completed by the presence of more than one extra nodal site and age older than 60 years-old, the IPI score was used in our analyses in order to limit the number of variables to adjust for in statistical models and coded in three prognostic groups as suggested by Sehn et al. for DLBCL patients treated with R-CHOP: very good for IPI = 0, good for IPI = 1 or 2 and poor for IPI = 3, 4 or 5 [27]. Regimens have already been described elsewhere [3,5,8,28]. Treatment followed the GELA recommendations or trials relevant

to this period. Supportive care consisted of valacyclovir, sulfamethoxazole-trimethoprim and granulocyte colony-stimulating factor (G-CSF) primary prophylaxis for all.

Place of treatment

The treatment centres encompassed six public centres (1 academic and 5 non-academic hospitals) and three private centres which were categorized as private centres, public academic centres (Toulouse University Medical Centres (TUMC)), or public community hospitals.

Adherence to treatment

For each patient, adherence to treatment was assessed using the ratio between received and planned dose intensity as described by Epelbaum et al. [9]. For each patient, dose intensity (DI) was calculated, by direct examination of pharmacist records and by dividing the total actual dose of each drug by the time needed to deliver it. The expression of the actual DI as a fraction of the stated dose was defined as relative DI (RDI). In this study, we calculated RDI for the principal drugs, i.e. cyclophosphamide and doxorubicin. As the classification of patients between the groups "poor adherence" and "good adherence" was similar for the two drugs, only those for doxorubicin are shown. In the RDI calculation, we considered the following planned dose intensities for doxorubicin: 8 cycles of 21 days with 50 mg/m² for R-CHOP21 and R-CHVP (rituximab, cyclophosphamide, doxorubicin, etoposide, prednisone), 8 cycles of 14 days with 50 mg/m² for R-CHOP14, 8 cycles of 21 days with 25 mg/m² for R-miniCHOP and R-miniCHVP, 4 cycles of 14 days with 75 mg/m² for R-ACVBP. We used a cut-off value reduction of 15%, based on the study of Lyman et al. [29].

Survival

Overall Survival (OS) was calculated from the first day of the first chemotherapy until death of any cause. These data were found in the medical records during the follow-up visits at the centres followed in the study.

Statistical analysis

Patients included in the cohort were described by quintile of social deprivation index to give an overview of the social distribution of the characteristics related to the disease, the patient and care modalities. Then, we built multivariate models for analyzing RDI (RDI < 85% or ≥85%) and survival including all variables associated with these outcomes in bivariate analyses at the threshold of 0.2 (data not shown). A logistic regression model was performed to identify determinants of RDI. Regarding survival analyses, Kaplan-Meier survival curves were plotted and compared using the log-rank test. Then a Cox model was performed to identify determinants of survival, including RDI. For all models, conditions of application and models fit were

checked by using Hosmer and Lemeshow for the logistic model and by analysing Schoenfeld residuals for the Cox model. As the proportional hazard assumption was violated for treatment adherence, we used a Cox model with time-varying coefficient. All the analyses were done by using STATA release 12 (StataCorp LP, College Station, TX, USA).

Results

Among the 418 patients initially included in this study, 2 deceased before starting treatment and 4 had no data regarding RDI. Poor adherence to treatment concerned 17.5% (72/412) of all treated patients with data on adherence to treatment. The baseline characteristics of patients features are presented in Tables 1, 2 and 3 for the clinical characteristics, socio-demographical profiles and the place of treatment. Among these patients, 16 patients had no IPI score. Fifteen patients presented an incomplete or incorrect home address which did not allow

finding the corresponding IRIS or the EDI score, and one patient had no data for both IPI and EDI. The final sample used for multivariate models included 380 patients (91% of the total sample). During the follow-up, 94 patients died and 70 had a treatment adherence (RDI < 85%). The flowchart is presented in Figure 1.

The results of the bivariate analyses in Tables 1, 2 and 3 shown that RDI < 85% was associated with age, comorbidity, LDH, IPI, Ann Arbor Stage, type of treatment, socioeconomic status and place of treatment. Table 4 presents the results of the multivariate model studying the effects of clinical characteristics, socio-demographic profiles and place of treatment on the risk of having a poor RDI. Regarding clinical characteristics, poor RDI was favoured by advanced age, high risk IPI and treatment with R-CHOP 14. For socio-demographic characteristics, no socioeconomic gradient was found but we observed a protective effect of being in intermediate level compared to the highly favoured level. Finally, we

Table 1 Clinical characteristics of the 412 DLBCL patients with data on RDI included in the AMARE cohort study and comparisons between RDI groups

		Total		RDI < 85% (n = 72)		RDI ≥ 85% (n = 340)		P value ^a
		n	%	n	%	n	%	
Gender	Male	222	53.9	34	47.2	188	55.3	0.212
	Female	190	46.1	38	52.8	152	44.7	
Age	<59 y	146	35.4	14	19.4	132	38.8	<0.001
	59 - 73 y	135	32.8	20	27.8	115	33.8	
	>73 y	131	31.8	38	52.8	93	27.4	
Comorbidity	none	161	39.1	22	30.6	139	40.9	0.103
	at least 1	251	60.9	50	69.4	201	59.1	
Standard International prognostic index (sIPI)	very good	56	13.6	5	6.9	51	15	<0.001
	good	217	52.7	29	40.3	188	55.3	
	poor	122	29.6	37	51.4	85	25	
	missing	17	4.1	1	1.4	16	4.7	
LDH	normal	197	47.8	27	37.5	170	50	0.054
	elevated	215	52.2	45	62.5	170	50	
B signs	absence	336	81.6	61	84.7	275	80.9	0.445
	presence	76	18.5	11	15.3	65	19.1	
Ann Arbor Stage	I-II	142	34.5	15	20.8	127	37.4	0.007
	III-IV	270	65.5	57	79.2	213	62.7	
Performance status	PS = 0-1	385	93.5	69	95.8	316	92.9	0.598 ^b
	PS = 2-4	27	6.6	3	4.2	24	7.1	
Regimens	R- CHOP 21 or R-CHVP	223	54.1	28	38.9	195	57.4	<0.001 ^b
	R- CHOP 14	34	8.3	10	13.9	24	7.1	
	R- ACVBP	45	10.9	3	4.2	42	12.4	
	R-mini CHOP or R-mini CHVP	100	24.3	30	41.7	70	20.6	
	other	10	2.4	1	1.4	9	2.7	

In bivariate analyses, p-values derived from the chi2 test^a or the Fisher Exact test^b when the expected frequencies were less than 5. DLBCL: diffuse large B-cell lymphoma; RDI: relative dose intensity; LDH: lactate dehydrogenase.

Table 2 Socio-demographic characteristics of the 412 DLBCL patients with data on RDI included in the AMARE cohort study and comparisons between RDI groups

		Total		RDI < 85% (n = 72)		RDI ≥ 85% (n = 340)		P value ^a
		n	%	n	%	n	%	
Occupational status	active	123	29.9	22	30.6	101	29.7	0.861
	inactive/retired	268	65.1	46	63.9	222	65.3	
	missing	21	5.1	4	5.6	17	5	
Cohabiting status	not alone	253	61.4	41	56.9	212	62.4	0.271
	alone	125	30.3	26	36.1	99	29.1	
	missing	34	8.3	5	6.9	29	8.5	
Socioeconomic status (quintile of EDI national scores)	1: highly favoured	74	18.0	12	16.7	62	18.2	0.101
	2: favoured	72	17.5	20	27.8	52	15.3	
	3: intermediate level	96	23.3	11	15.3	85	25	
	4: deprived	89	21.6	17	23.6	72	21.2	
	5: highly deprived	65	15.8	11	15.3	54	15.9	
	missing	16	3.9	1	1.4	15	4.4	

In bivariate analyses, p-values derived from the chi2 test ^a.

DLBCL: diffuse large B-cell lymphoma; RDI: relative dose intensity; EDI: European deprivation index.

found that being cared for in academic centres may protect against poor adherence to treatment.

For survival analyses, the median follow-up was 994 days and the maximum length of follow-up was 2363 days. The year of diagnosis was not associated with overall survival (data not shown). As shown in the Kaplan-Meier's curves plotted in Figure 2, poor RDI was associated with reduced overall survival (a reduction of about 25% at 24 month). The place of treatment seemed also influence overall survival with a reduced survival in community hospitals compared to private and academic centres. However, we found no socioeconomic gradient in overall survival. Analyses of Schoenfeld's residuals showed a violation in the proportional hazard assumption for RDI (data not shown). Figure 2A suggests indeed that RDI < 85% more negatively influenced overall survival during the first 24-month period. That is why we introduced an interaction term between RDI and time in the Cox multivariate model noted as RDI*time in Table 5. Poor overall survival was associated with poor RDI. The significance of the RDI*time variable means that the negative effect on overall survival of having a RDI < 85% decreased with duration from the chemotherapy initiation. Complementary analyses showed

that RDI < 85% reduced overall survival only during the first 24 month after treatment initiation (adjusted hazard ratio [95% confidence interval] = 3.23 [1.84; 5.69]). Table 5 shows no effect of the socioeconomic status on overall survival. Moreover, overall survival was higher for patients cared for in private hospitals compared to public academics or community centres (p-values = 0.068 and 0.075 respectively). Table 5 shows also poorer survival among patients with advanced age and poor IPI. Women had a better overall survival. No differences were found between chemotherapy regimens.

Discussion

In this population-based prospective cohort study, we found poor adherence, defined as RDI < 85%, in 17.5% of the treated patients (72/412). We showed that advanced age, poor IPI and treatment with R-CHOP 14 favoured RDI < 85%, as expected. Treatment in the academic centre TUMC was associated with RDI ≥ 85%. The results of our survival analyses designated poor adherence to treatment as strongly associated with poor overall survival independent of patients' age, gender, socioeconomic status, comorbidity, IPI score, chemotherapy regimens and the place of

Table 3 Place of treatment of the 412 DLBCL patients with data on RDI included in the AMARE cohort study and comparisons between RDI groups

		Total		RDI < 85% (n = 72)		RDI ≥ 85% (n = 340)		P value ^a
		n	%	n	%	n	%	
Place of treatment	Private centres	104	25.2	22	30.6	82	24.1	0.002
	TUMC	180	43.7	18	25	162	47.7	
	Community hospitals	128	31.1	32	44.4	96	28.2	

In bivariate analyses, p-values derived from the chi2 test ^a.

DLBCL: diffuse large B-cell lymphoma; RDI: relative dose intensity; TUMC: Toulouse university medical centre.

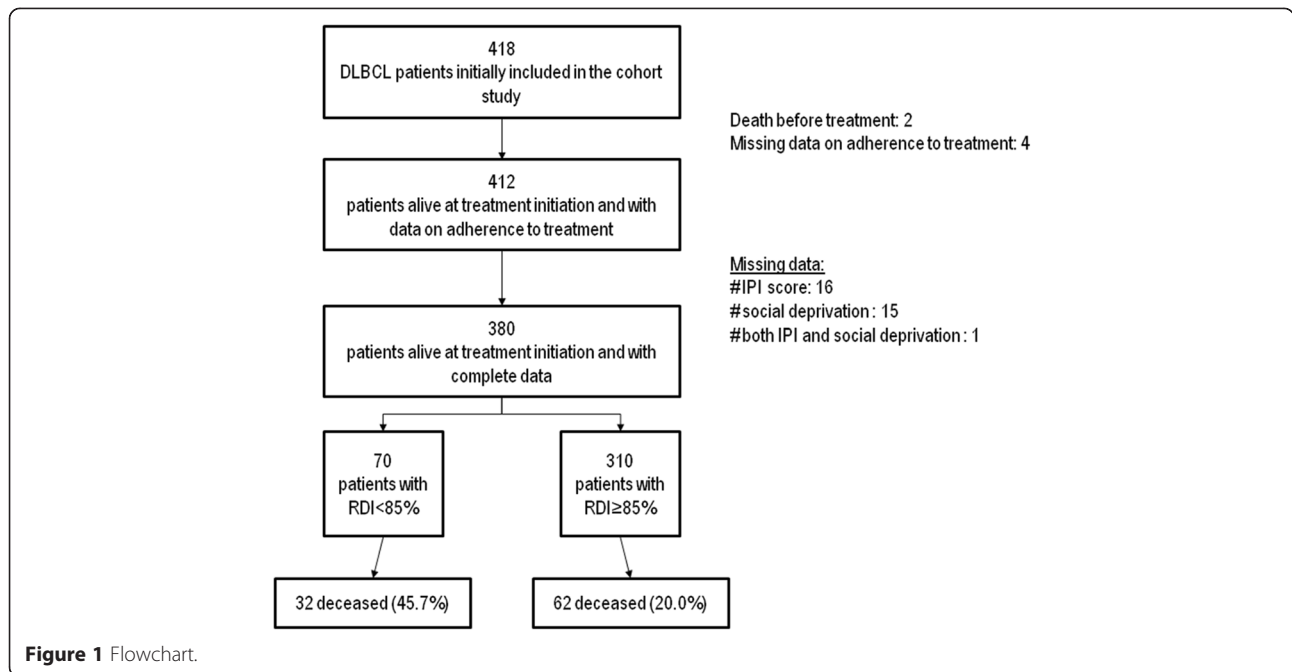
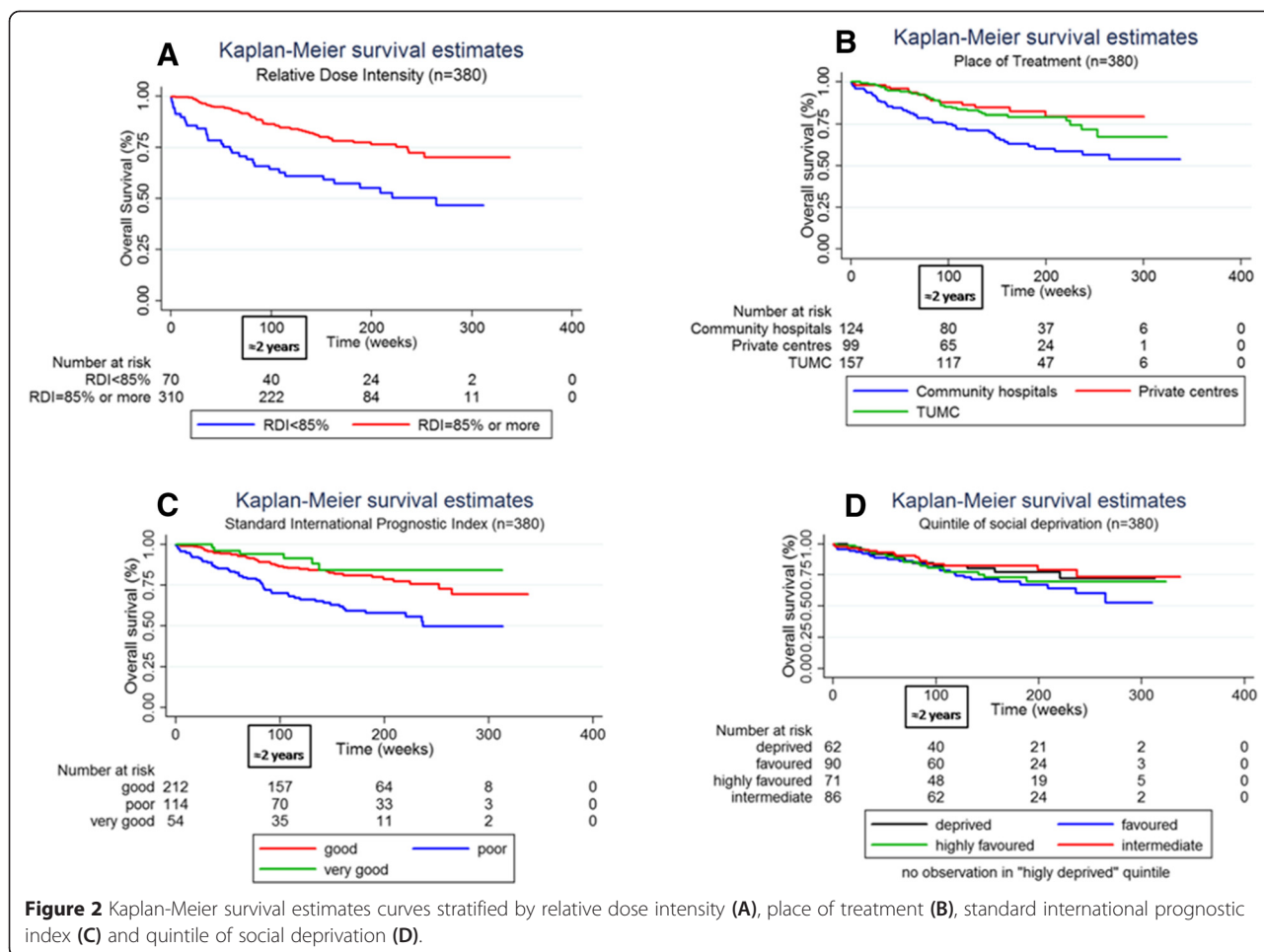


Table 4 Factors associated with receiving a relative dose-intensity lower than 85% - results of a multivariate logistic regression model (n = 380)

		Odds ratios	p-value	[95% Confidence Interval]
Gender	Male	1		
	Female	1.32	0.361	[0.73; 2.37]
Age ^a	<59 y	1		
	59 - 73 y	1.06	0.902	[0.41; 2.77]
	>73 y	4.42	0.019	[1.27; 15.35]
Socioeconomic status ^b (quintile of EDI national scores)	1: highly favoured	1		
	2: favoured	1.49	0.387	[0.60; 3.67]
	3: intermediate level	0.32	0.025	[0.12; 0.86]
	4: deprived	0.79	0.625	[0.31; 2.01]
	5: highly deprived	0.72	0.526	[0.26; 1.98]
Comorbidity	none	1		
	at least 1	1.13	0.704	[0.59; 2.18]
Standard International prognostic index ^c (sIPI)	very good	1		
	good	1.32	0.612	[0.45; 3.86]
	poor	4.60	0.008	[1.48; 14.30]
Chemotherapy regimens ^d	R- CHOP 21 or R-CHVP	1		
	R- CHOP 14	7.65	0.001	[2.35; 24.92]
	R- ACVBP	1.30	0.737	[0.15; 6.06]
	R-miniCHOP or R-mini CHVP	0.66	0.429	[0.24; 1.87]
	other	0.09	0.046	[0.01; 0.96]
Place of treatment ^e	Private centres	1		
	TUMC	0.23	0.003	[0.09; 0.60]
	Community hospitals	1.11	0.780	[0.55; 2.23]

Notes ^a, ^b, ^c, ^d, and ^e indicate the global p-value; ^a: p = 0.027; ^b: p = 0.025; ^c: p < 0.001; ^d: p = 0.002; ^e: p = 0.002.

DLBCL: diffuse large B-cell lymphoma; RDI: relative dose intensity; EDI: European deprivation index; TUMC: Toulouse university medical centre.



treatment. We showed that patients treated in private centres were likely to have a better survival than those treated in public community hospitals and academic centre, after adjusting for confounders. Patients' socioeconomic status assessed by the level of social deprivation of their living area at the time of diagnosis had no effect on neither adherence to treatment nor overall survival.

In this study, we selected patients from the regional cancer network and we cannot generalise our results to the national level. At the regional level, we focused on the main centres covered by the network and thus we may have lost in representativeness. About 10% of the initial sample was excluded from our analyses because of missing data. In addition, the time period for including patients was almost five years. As a consequence, patients included at the end of the inclusion period may be more prone to be censored and thus they have less time to reach the event of interest than those included at the beginning of the period. Moreover, we had no data on what led to reduction in RDI and we could not know if it was a patient's refusal or trepidation to receive treatment because of side effect, a physician's decision in a

case of a frail patient or a protocol-driven decision. However, this study was based on population data which should well reflect routine practice. This study deals with both medical and non-medical determinants of the treatment adherence and overall survival among patients treated for DLBCL in France. Data collection was prospective and about 90% of the total sample had complete data. Moreover, our models included patients' socioeconomic status assessed by a European ecological index of social deprivation used as a proxy of the individual status.

Adherence to therapy has been established for years as a critical parameter for clinical benefit in medical oncology. This statement was established two decades ago for conventional chemotherapy in breast cancer [30,31] and lymphoma patients [32]. In the present study, we considered adherence to chemotherapy from an ecological point of view as we assume that adherence may be influenced not only by characteristics of the individual patient, but also by factors within the patient's environment, or so-called system level factors. In an ecological model, patients' behaviour may be influenced by factors at the patient-level, micro- (provider and social support), meso- (health care

Table 5 Factors associated with overall survival - results of a multivariate Cox regression model with the relative dose-intensity entered as a time dependent variable (n = 380)

		Hazard ratio	p-value	[95% Confidence interval]
Gender	Male	1		
	Female	0.52	0.003	[0.34; 0.80]
Age ^a	<59 y	1		
	59 - 73 y	1.77	0.153	[0.81; 3.88]
	>73 y	2.57	0.070	[0.92; 7.15]
Socioeconomic status ^b (quintile of EDI national scores)	1: highly favoured	1		
	2: favoured	0.91	0.783	[0.47; 1.78]
	3: intermediate level	1.46	0.242	[0.78; 2.73]
	4: deprived	0.61	0.171	[0.30; 1.24]
	5: highly deprived	0.74	0.429	[0.36; 1.55]
Comorbidity	none	1		
	at least 1	0.74	0.224	[0.46; 1.20]
Standard International prognostic index ^c (sIPI)	very good	1		
	good	1.30	0.559	[0.54; 3.15]
	poor	2.61	0.041	[1.04; 6.57]
Chemotherapy regimens ^d	R-CHOP21 or R-CHVP21	1		
	R- CHOP 14	0.57	0.246	[0.22; 1.48]
	R- ACVBP	0.97	0.956	[0.32; 2.90]
	R-mini CHOP or R-mini CHVP	1.94	0.122	[0.84; 4.48]
	other	1.49	0.516	[0.45; 4.99]
Relative dose-intensity (RDI)	RDI ≥85%	1		
	RDI <85%	3.89	<0.001	[1.86; 8.14]
Place of treatment ^e	Private centres	1		
	TUMC	1.88	0.068	[0.95; 3.71]
	Community hospitals	1.75	0.075	[0.95; 3.25]
Time dependant variables	RDI * Time	0.998	0.024	[0.997; 0.999]

Notes ^a, ^b, ^c, ^d, and ^e indicate the global p-value; ^a: p = 0.176; ^b: p = 0.083; ^c: p = 0.007; ^d: p = 0.338; ^e: p = 0.133.

RDI * Time is the interaction term between RDI and time in the Cox multivariate model.

DLBCL: diffuse large B-cell lymphoma; RDI: relative dose intensity; EDI: European deprivation index; TUMC: Toulouse university medical centre.

organization), and macro (health policy) -levels [33]. In our study, about 17.5% of the total sample had less than 85% of the RDI. This relatively small proportion of patient with poor adherence to treatment may be explained as the use of G-CSF was widespread in our practices (data not shown), considering that prophylactic GCSF use is associated with increased RDI [29]. Our results suggest a strong effect of advanced age, treatment and poor IPI on RDI. These results are in agreement with the factors identified to be related to low RDI listed in Wildiers and Reiser's review which encompasses increased age (>60 years), ECOG status, stage or IPI score and more occasionally, the type of treatment (ACVBP, CHOP14) or the use of G-CSF (secondary or primary prophylaxis) [17]. Our results have also pointed out a protector effect of being treated in the academic centre TUMC. Understanding the factors unique to this centre are key to revealing potential pathways though

which RDI may be affected. A higher treatment adherence in TUMC may translate a higher experience of the medical team in dealing with side-effects and more complex case and feeling comfortable with maintaining the treatment despite these. In addition in this centre, DLBCL patients benefit from a telephone-based intervention by an oncology-certified nurse which consists of systematic calls to the patients twice a week during treatment and the collection of clinical and biological observations. The information is then forwarded to the oncologist, and corresponding interventions are performed [34]. As R-CHOP is administered through intra-venous route, it should not be influenced by patients' attitude although the telephone-based intervention might improve the patient-physician relationship and patient's positive appraisal of the treatment centre which have been pointed out as important factors in adherence to treatment [35]. However,

it is possible that the telephone-based intervention set up in TUMC improved the management of side effects and secured the whole treatment, encouraging physicians to preserve dose-intensity. Moreover, we assume that this telephone-based intervention might improve physician adherence by increasing patients' information and therapeutic education. This "physician non adherence" encompasses non adherence to recommendations, dose or temporal concession due to documented toxicity in agreement with recommendations, but also physician individual decision [36]. The latter had not been thoroughly investigated, essentially because it resides in the privacy of oncology practice. Indeed, it integrates various medical, psychological and social factors related to the patient (like the age) but also to the physician [37]. In the present study, the absence of data regarding what led to reduction in RDI limited our capability to interpret these results regarding adherence to treatment. Further studies are needed to disentangle which causes of RDI reduction may be attributable to the physician and to the patient. Such studies should not only look for clinical factors, classically identified as determinant of RDI [38], but also for non-medical characteristics of patients and their environment.

The impact of RDI on outcome in lymphomas treated with CHOP and related regimens, has been investigated before the introduction of rituximab [9-11,15,16]. Since the introduction of rituximab at the end of the 90s, some studies have supported the association between RDI and patient outcome but they were based on analyses of relatively small study samples [13,14]. To our knowledge, the present study is the first to explore the association between RDI and OS in the Rituximab era in a larger scale study sample while studying non-medical potential determinants of RDI, in particular the role of some socioeconomic factors and the place of treatment. In the present study based on a larger sample, our results suggest a strong association between poor adherence to treatment and the overall survival with an overall mortality almost four-times greater among patients with $RDI < 85\%$ than among those with $RDI \geq 85\%$. This association was lost after about two-years after the treatment initiation. This may reflect the fact that, for a patient newly treated for DLBCL, the risk of dying from a cause related either to his disease or the treatment diminishes with time since the treatment initiation due to the competition with the risk of dying from other causes unrelated to the disease over time. The results of a recent study published by Maurer et al. tended to support this observation as they found no difference in overall survival between DLBCL patients achieving 24 months of event-free survival from diagnosis and the age- and sex-matched general population [39]. The models we used in the present study were all adjusted for baseline IPI scores which lessened the risk of a reverse causation bias between in interpreting the

relationship between RDI and overall survival. Indeed, a high IPI score may be considered as risk factor of pejorative disease evolution by including the stage of the disease and the presence of more than one extra nodal site. In the main analysis as well as in sensitivity analyses, the hazard ratio assessing the association between RDI and overall survival remained stable after adjusting for IPI and confounders suggesting no major confounding bias (data not shown). Additional information about the causes of dose concession and delay in treatment would have been informative but at present these data are not available.

A major concern of modern oncology lies in applying evidence-based medicine to routine medical practice in small scale private centres or community hospitals. In 2009, a study among lymphoma patients showed that treatment in rural community hospitals was associated with poorer overall survival than treatment in academic centres, whatever the geographical location and patients' risk-profile with the exception of high-risk patient among whom urban academic centres was associated with the best outcome [22]. A more recent study among DLBCL patients pointed out the poorer overall survival of patients living in small or medium urban area compared to those living in rural or large urban areas [40]. In our study, we did not provide direct information regarding spatial disparities of patients' outcomes as we focused on place of treatment that was academic centre, community hospitals or private centres. We showed that patients treated in private centres tended to have a better overall survival than those treated in public centres, academic or not (global p-value for the place of treatment variable, $p = 0.133$). This may reflect an unequal repartition of patients between the different types of healthcare centres which, in the private sector, may lead to an underrepresentation of high-risk-of-dying-patients. However, multivariate analyses adjusted for comorbidities and IPI showed no interaction between these variables and the care modalities. Another explanation may arise from the geographical distribution of the healthcare centres in the region corresponding roughly to academic centres in large urban areas, private centres in large and medium urban areas and the community health centres in small urban and rural areas. Further investigations based on complementary data for the characterisation of the spatial and structural environment of patients would be necessary to formally test these hypotheses. This is the purpose of an ongoing project.

Regarding the role of patients' socioeconomic status, we found a protector effect of the intermediate socioeconomic level against poor treatment adherence. More data would be needed concerning the place of residence or the occupation to help us in the interpretation of this result. Finally, we found no association between patients' socioeconomic status assessed by the European ecological deprivation index (EDI) of the living area at diagnosis and overall

survival in contrast with studies supporting social inequalities in survival and treatment of Non-Hodgkin's lymphomas [19-21]. A possible explanation of the absence of socioeconomic gradient in overall survival may arise from the fact that the cohort was constituted by patients treated for DLBCL with the standard therapy. Indeed, the selection of such a population allows to observe patients only once they enter to the healthcare system but does not account for those who encountered difficulties in access to primary care which is a critical step in the healthcare trajectory of cancer patients [41,42]. In our study sample, we observed no association between patients' IPI at diagnosis and their socioeconomic status suggesting that no social gradient in the distribution of this characteristic in our sample (data not shown). Another element which may explain the absence of effect of patients' socioeconomic status is the way in which healthcare is organized in France. The policy of the regional cancer network dedicated to cancer patients, including haematological malignancies, dictates that all e-medical files are systemically screened by disease-specific boards constituted by university hospital staff members. Thus, our patients may have benefited from the expertise of the university hospital staff, independent of their socioeconomic status or their living areas. These results suggest that the French healthcare system is doing fairly well in absorbing the social inequalities in health among patients treated for DLBCL, that is once patients have overcome the barrier of primary access to care.

Conclusions

This prospective study among patients treated for DLBCL with R-CHOP and R-CHOP like regimens in France yields information about the adherence to treatment and its association with overall survival in a "real life" setting. Our results suggest that poor adherence to treatment is strongly associated with overall survival with a risk of death almost four-time greater among patients with RDI < 85% compared with those with RDI ≥ 85%, principally during the first two-years after the initiation of the treatment. About 17.5% of the whole treated patients in this study received less than 85% of the planned treatment which was associated with advanced age and a high risk profile. Conversely, treatment in academic medical centres favoured a good adherence to treatment. As these centres have developed a telephone-based intervention by an oncology-certified nurse to monitor patients' treatment, this warrants further research as a potential for the management of adverse effects. No effect of patients' socioeconomic gradient was found on either adherence to treatment or overall survival.

Abbreviations

DLBCL: Diffuse large B-cell lymphoma; NHL: Non-Hodgkin's lymphomas; RDI: Relative dose-intensity; EDI: European ecological deprivation index; IPI: International prognostic index.

Competing interests

The authors declare that they have no competing interests.

Authors' contributions

CB SL FD CD GL GC participated in the study design. CB GC PJ JCN collected data and GC PJ JCN controlled the database. SL did the data analysis and the manuscript draft. CB SL GL GC PJ JCN CD FD EB CR participated in results interpretation. CB SL GL GC PJ JCN CD FD EB CR revised the manuscript. All authors read approved the final manuscript.

Acknowledgement

The CAPTOR WP3 group (Basso M, Camille C, Castin M, Compaci G, Conte C, Costa N, Delpierre C, Despas F, Fize AL, Gauthier M, Hérim F, Jude A, Lamy S, Lapeyre-mestre M, Laurent G, Macone-fourio G, Montastruc JL, Nogaro JC, Olivier P, Palmaro A, Protin C, Rioufol C, Rueter M, Soulat JM, Ysebaert L), the Oncomip network and also Fantin R for geocoding assistance. This work was supported by the grant « Investissement d'Avenir » ANR-11-PHUC-001 of the French National Research Agency.

Author details

¹Department of Haematology, Toulouse University Hospital, Toulouse, France. ²University of Toulouse III Paul Sabatier, Toulouse, France. ³INSERM UMR1027 (The French National Institute of Health and Medical Research), Toulouse, France. ⁴Department of Clinical Pharmacology, Toulouse University Hospital, Toulouse, France. ⁵Health care cancer network Oncomip, Toulouse, France. ⁶INSERM UMR1037 (The French National Institute of Health and Medical Research), Cancer Research Centre of Toulouse, Toulouse, France.

Received: 16 October 2014 Accepted: 30 March 2015

Published online: 15 April 2015

References

- Sant M, Allemani C, Tereanu C, De Angelis R, Capocaccia R, Visser O, et al. Incidence of hematologic malignancies in Europe by morphologic subtype: results of the HAEMACARE project, vol 19. 2010.
- McKelvey EM, Gottlieb JA, Wilson HE, Haut A, Talley RW, Stephens R, et al. Hydroxyldaunomycin (Adriamycin) combination chemotherapy in malignant lymphoma. *Cancer*. 1976;38(4):1484-93.
- Coiffier B, Lepage E, Brière J, Herbrecht R, Tilly H, Bouabdallah R, et al. CHOP chemotherapy plus rituximab compared with CHOP alone in elderly patients with diffuse large-B-cell lymphoma. *N Engl J Med*. 2002;346(4):235-42. doi:10.1056/NEJMoa011795.
- Pfreundschuh M, Trümper L, Österborg A, Pettengell R, Trnety M, Imrie K, et al. CHOP-like chemotherapy plus rituximab versus CHOP-like chemotherapy alone in young patients with good-prognosis diffuse large-B-cell lymphoma: a randomised controlled trial by the MabThera International Trial (MInT) Group. *Lancet Oncol*. 2006;7(5):379-91. http://dx.doi.org/10.1016/S1470-2045(06)70664-7.
- Fitoussi O, Belhadji K, Mounier N, Parrens M, Tilly H, Salles G, et al. Survival impact of rituximab combined with ACVBP and upfront consolidation autotransplantation in high-risk diffuse large B-cell lymphoma for GELA. *Haematologica*. 2011;96(8):1136-43. doi:10.3324/haematol.2010.038109.
- Italiano A, Jardin F, Peyrade F, Saudek L, Tilly H, Thys A. Adapted CHOP plus rituximab in non-Hodgkin's lymphoma in patients over 80 years old. *Haematologica*. 2005;90(9):1281-3.
- Habermann TM, Weller EA, Morrison VA, Gascoyne RD, Cassileth PA, Cohn JB, et al. Rituximab-CHOP versus CHOP alone or with maintenance rituximab in older patients with diffuse large B-cell lymphoma. *J Clin Oncol*. 2006;24(19):3121-7. doi:10.1200/JCO.2005.05.1003.
- Pfreundschuh M, Schubert J, Ziepert M, Schmits R, Mohren M, Lengfelder E, et al. Six versus eight cycles of bi-weekly CHOP-14 with or without rituximab in elderly patients with aggressive CD20+ B-cell lymphomas: a randomised controlled trial (RICOVER-60). *Lancet Oncol*. 2008;9(2):105-16. http://dx.doi.org/10.1016/S1470-2045(08)70002-0.
- Epelbaum R, Faraggi D, Ben-Arie Y, Ben-Shahar M, Haim N, Ron Y, et al. Survival of diffuse large cell lymphoma: a multivariate analysis including dose intensity variables. *Cancer*. 1990;66(6):1124-9.
- Bosly A, Bron D, Van Hoof A, De Bock R, Berneman Z, Ferrant A, et al. Achievement of optimal average relative dose intensity and correlation with survival in diffuse large B-cell lymphoma patients treated with CHOP. *Ann Hematol*. 2008;87(4):277-83. doi:10.1007/s00277-007-0399-y.

11. Lepage E, Gisselbrecht C, Haioun C, Sebban C, Tilly H, Bosly A, et al. Prognostic significance of received relative dose intensity in non-Hodgkin's lymphoma patients: Application to LNH-87 protocol. *Ann Oncol.* 1993;4(8):651–6.
12. Pettengell R, Schwenkglenks M, Bosly A. Association of reduced relative dose intensity and survival in lymphoma patients receiving CHOP-21 chemotherapy. *Ann Hematol.* 2008;87(5):429–30. doi:10.1007/s00277-008-0447-2.
13. Terada Y, Nakamae H, Aimoto R, Kanashima H, Sakamoto E, Aimoto M, et al. Impact of relative dose intensity (RDI) in CHOP combined with rituximab (R-CHOP) on survival in diffuse large B-cell lymphoma. *J Exp Clin Cancer Res.* 2009;28:116. doi:10.1186/1756-9966-28-116.
14. Hirakawa T, Yamaguchi H, Yokose N, Gomi S, Inokuchi K, Dan K. Importance of maintaining the relative dose intensity of CHOP-like regimens combined with rituximab in patients with diffuse large B-cell lymphoma. *Ann Hematol.* 2010;89(9):897–904. doi:10.1007/s00277-010-0956-7.
15. Epelbaum R, Haim N, Ben-Shahar M, Ron Y, Cohen Y. Dose-intensity analysis for CHOP chemotherapy in diffuse aggressive large cell lymphoma. *Isr J Med Sci.* 1988;24(9–10):533–8.
16. Kwak LW, Halpern J, Olshen RA, Horning SJ. Prognostic significance of actual dose intensity in diffuse large-cell lymphoma: results of a tree-structured survival analysis. *J Clin Oncol.* 1990;8(6):963–77.
17. Wildiers H, Reiser M. Relative dose intensity of chemotherapy and its impact on outcomes in patients with early breast cancer or aggressive lymphoma. *Crit Rev Oncology/Hematology.* 2011;77(3):221–40. http://dx.doi.org/10.1016/j.critrevonc.2010.02.002.
18. Roswall N, Olsen A, Christensen J, Rugbjerg K, Møller M, et al. Social inequality and incidence of and survival from Hodgkin lymphoma, non-Hodgkin lymphoma and leukaemia in a population-based study in Denmark, 1994–2003. *Eur J Cancer.* 2008;44(14):2058–73. http://dx.doi.org/10.1016/j.ejca.2008.06.011.
19. Cronin-Fenton DP, Sharp L, Deady S, Comber H. Treatment and survival for non-Hodgkin's lymphoma: Influence of histological subtype, age, and other factors in a population-based study (1999–2001). *Eur J Cancer.* 2006;42(16):2786–93. doi:http://dx.doi.org/10.1016/j.ejca.2006.04.018.
20. Frederiksen BL, Dalton SO, Osler M, Steding-Jessen M, de Nully BP. Socioeconomic position, treatment, and survival of non-Hodgkin lymphoma in Denmark - a nationwide study. *Br J Cancer.* 2012;106(5):988–95.
21. Tao L, Foran JM, Clarke CA, Gomez SL, Keegan THM. Socioeconomic disparities in mortality after diffuse large B-cell lymphoma in the modern treatment era. *Blood.* 2014;123(23):3553–62.
22. Loberiza FR, Cannon AJ, Weisenburger DD, Vose JM, Moehr MJ, Bast MA, et al. Survival disparities in patients with lymphoma according to place of residence and treatment provider: a population-based study. *J Clin Oncol.* 2009;27(32):5376–82. doi:10.1200/jco.2009.22.0038.
23. Pornet C, Delpierre C, Dejardin O, Grosclaude P, Launay L, Guittet L et al. Construction of an adaptable European transnational ecological deprivation index: the French version. *J Epidemiol Community Health.* 2012. doi:10.1136/jech-2011-200311.
24. Oken MM, Creech RH, Tormey DC, Horton J, Davis TE, McFadden ET, et al. Toxicity and response criteria of the Eastern Cooperative Oncology Group. *Am J Clin Oncol.* 1982;5(6):649–55.
25. Blay JY, Gomez F, Sebban C, Bachelot T, Biron P, Guglielmi C, et al. The international prognostic index correlates to survival in patients with aggressive lymphoma in relapse: analysis of the PARMA trial. *Blood.* 1998;92(10):3562–8.
26. The International Non-Hodgkin's Lymphoma Prognostic Factors Project. A predictive model for aggressive Non-Hodgkin's lymphoma. *N Engl J Med.* 1993;329(14):987–94. doi:10.1056/nejm199309303291402.
27. Sehn LH, Berry B, Chhanabhai M, Fitzgerald C, Gill K, Hoskins P, et al. The revised International Prognostic Index (R-IPi) is a better predictor of outcome than the standard IPI for patients with diffuse large B-cell lymphoma treated with R-CHOP. *Blood.* 2007;109(5):1857–61.
28. Peyrade F, Jardin F, Thieblemont C, Thyss A, Emile J-F, Castaigne S, et al. Attenuated immunochemotherapy regimen (R-miniCHOP) in elderly patients older than 80 years with diffuse large B-cell lymphoma: a multicentre, single-arm, phase 2 trial. *Lancet Oncol.* 2011;12(5):460–8. http://dx.doi.org/10.1016/S1470-2045(11)70069-9.
29. Lyman GH, Dale DC, Friedberg J, Crawford J, Fisher RI. Incidence and predictors of Low chemotherapy dose-intensity in aggressive Non-Hodgkin's lymphoma: a nationwide study. *J Clin Oncol.* 2004;22(21):4302–11. doi:10.1200/jco.2004.03.213.
30. Bonadonna G, Valagussa P. Dose-response effect of adjuvant chemotherapy in breast cancer. *N Engl J Med.* 1981;304(1):10–5. doi:10.1056/NEJM198101013040103.
31. Hryniuk W, Bush H. The importance of dose intensity in chemotherapy of metastatic breast cancer. *J Clin Oncol.* 1984;2(11):1281–8.
32. Green JA, Dawson AA, Fell LF, Murray S. Measurement of drug dosage intensity in MVPP therapy in Hodgkin's disease. *Br J Clin Pharmacol.* 1980;9(5):511–4.
33. Berben L, Dobbels F, Engberg S, Hill MN, De Geest S. An ecological perspective on medication adherence. *West J Nurs Res.* 2012;34(5):635–53. doi:10.1177/0193945911434518.
34. Compac G, Ysebaert L, Obéric L, Derumeaux H, Laurent G. Effectiveness of telephone support during chemotherapy in patients with diffuse large B cell lymphoma: the ambulatory medical assistance (AMA) experience. *Int J Nurs Stud.* 2011;48(8):926–32. http://dx.doi.org/10.1016/j.ijnurstu.2011.01.008.
35. Noens L, van Lierde MA, De Bock R, Verhoef G, Zachee P, Berneman Z, et al. Prevalence, determinants, and outcomes of nonadherence to imatinib therapy in patients with chronic myeloid leukemia: the ADAGIO study. *Blood.* 2009;113(22):5401–11. doi:10.1182/blood-2008-12-196543.
36. Despans F, Roche H, Laurent G. [Anticancer drug adherence]. *Bull Cancer.* 2013;100(5):473–84. doi:10.1684/bdc.2013.1738.
37. Schleifer SJ, Bhardwaj S, Lebovits A, Tanaka JS, Messe M, Strain JJ. Predictors of physician nonadherence to chemotherapy regimens. *Cancer.* 1991;67(4):945–51.
38. Yamaguchi H, Hirakawa T, Inokuchi K. Importance of relative dose intensity in chemotherapy for diffuse large B-cell lymphoma. *J Clin Exp Hematop.* 2011;51(1):1–5. doi:10.3960/jslrt.51.1.
39. Maurer MJ, Ghesquière H, Jais J-P, Witzig TE, Haioun C, Thompson CA et al. Event-Free Survival at 24 Months Is a Robust End Point for Disease-Related Outcome in Diffuse Large B-Cell Lymphoma Treated With Immunochemotherapy. *J Clin Oncol.* 2014. doi:10.1200/jco.2013.51.5866.
40. Lee B, Goktepe O, Hay K, Connors JM, Sehn LH, Savage KJ, et al. Effect of place of residence and treatment on survival outcomes in patients with diffuse large B-cell lymphoma in British Columbia. *Oncologist.* 2014;19(3):283–90. doi:10.1634/theoncologist.2013-0343.
41. Dejardin O, Berchi C, Mignon A, Pornet C, Guillaume E, Guittet L, et al. Inégalités sociales, de santé du constat à l'action – Intérêt de la mise en place d'un accompagnement personnalisé pour la réduction des inégalités sociales en cancérologie. *Rev Epidemiol Sante Publique.* 2011;59(1):45–51. http://dx.doi.org/10.1016/j.respe.2010.10.008.
42. Pornet C, Dejardin O, Morlais F, Bouvier V, Launay G. Socioeconomic determinants for compliance to colorectal cancer screening: a multilevel analysis. *J Epidemiol Community Health.* 2010;64(4):318–24. doi:10.1136/jech.2008.081117.

Submit your next manuscript to BioMed Central and take full advantage of:

- Convenient online submission
- Thorough peer review
- No space constraints or color figure charges
- Immediate publication on acceptance
- Inclusion in PubMed, CAS, Scopus and Google Scholar
- Research which is freely available for redistribution

Submit your manuscript at
www.biomedcentral.com/submit

