

## Does transient cART started during primary HIV infection undermine the long-term immunologic and virologic response on cART resumption?

Evguenia Krastinova, Rémonie Seng, Jérôme Lechenadec, Henri Panjo, Asma Essat, Djamila Makhloufi, Martine Obadia, Louis Bernard, Cécile Goujard, Laurence Meyer

► **To cite this version:**

Evguenia Krastinova, Rémonie Seng, Jérôme Lechenadec, Henri Panjo, Asma Essat, et al.. Does transient cART started during primary HIV infection undermine the long-term immunologic and virologic response on cART resumption?. *BMC Infectious Diseases*, BioMed Central, 2014, 15 (1), pp.178. <10.1186/s12879-015-0892-1>. <inserm-01187356>

**HAL Id: inserm-01187356**

**<http://www.hal.inserm.fr/inserm-01187356>**

Submitted on 26 Aug 2015

**HAL** is a multi-disciplinary open access archive for the deposit and dissemination of scientific research documents, whether they are published or not. The documents may come from teaching and research institutions in France or abroad, or from public or private research centers.

L'archive ouverte pluridisciplinaire **HAL**, est destinée au dépôt et à la diffusion de documents scientifiques de niveau recherche, publiés ou non, émanant des établissements d'enseignement et de recherche français ou étrangers, des laboratoires publics ou privés.

RESEARCH ARTICLE

Open Access

# Does transient cART started during primary HIV infection undermine the long-term immunologic and virologic response on cART resumption?

Evgenia Krastinova<sup>1,2\*</sup>, Remonie Seng<sup>1,2</sup>, Jerome Lechenadec<sup>1</sup>, Henri Panjo<sup>3</sup>, Asma Essat<sup>1</sup>, Djamil Makhoulouf<sup>4</sup>, Martine Obadia<sup>5</sup>, Louis Bernard<sup>6</sup>, Cecile Goujard<sup>1,7</sup>, Laurence Meyer<sup>1,2</sup> and for the ANRS PRIMO cohort

## Abstract

**Background:** We explored the impact of transient cART started during the primary HIV-infection (PHI) on the long-term immunologic and virologic response on cART resumption, by comparison with treatment initiation during the chronic phase of HIV infection (CHI).

**Methods:** We analyzed data on 1450 patients enrolled during PHI in the ANRS PRIMO cohort between 1996 and 2013. "Treatment resumption" was defined as at least 3 months of resumed treatment following interruption of at least 1 month of treatment initiated during PHI. "Treatment initiation during CHI" was defined as cART initiated  $\geq 6$  months after PHI. The virologic response to resumed treatment and to treatment initiated during CHI was analyzed with survival models. The CD4 cell count dynamics was modeled with piecewise linear mixed models.

**Results:** 136 patients who resumed cART for a median (IQR) of 32 (18–51) months were compared with 377 patients who started cART during CHI for a median of 45 (22–57) months. Most patients (97%) achieved HIV-RNA  $< 50$  cp/mL after similar times in the two groups. The CD4 cell count rose similarly in the two groups during the first 12 months. However, after 12 months, patients who started cART during CHI had a better immunological response than those who resumed cART ( $p = 0.01$ ); therefore, at 36 months, the gains in  $\sqrt{\text{CD4}}$  cells/mm<sup>3</sup> and CD4% were significantly greater in patients who started treatment during CHI.

**Conclusion:** These results suggest that interruption of cART started during PHI has a significant, albeit modest negative impact on CD4 cell recovery on cART resumption.

**Keywords:** Primary HIV-infection, Antiretroviral therapy, Immune response, Cohort, Long-term outcome

## Background

In 2013, American and French guidelines recommended universal treatment of HIV infection regardless of the CD4 cell count. Treatment initiation for patients with primary infection changed from "should be considered optional" to "should be offered" [1,2]. WHO, European AIDS clinical society and BHIVA guidelines are still based on the CD4 cell count for treatment initiation in asymptomatic patients with primary HIV infection [3,4].

Treatment initiation during primary HIV infection (PHI) has both advantages and disadvantages: it limits the loss of CD4 cells, suppresses viremia, limits the size of the latent reservoir, attenuates immune activation [5-7], and reduces infectivity [8]. Transient treatment of PHI might limit the viral setpoint and influence the CD4 cell outcome after treatment interruption, although this benefit would only be temporary [9-12]. The main disadvantage of cART initiation during PHI is the unknown risk of longer cumulative drug exposure. In addition, earlier initiation of what, for now, remains a lifelong therapy may undermine patients' quality of life.

A small fraction of HIV-1-infected patients - so-called 'post treatment controllers' (PTC) - maintain viral suppression after stopping cART. This status is mostly established

\* Correspondence: krastinova@gmail.com

<sup>1</sup>INSERM, U1018, Epidemiology of HIV and STI, CESP; University Paris-Sud, Le Kremlin-Bicêtre, France

<sup>2</sup>Department of Public Health and Epidemiology, Bicêtre Hospital, AP-HP, Le Kremlin Bicêtre, France

Full list of author information is available at the end of the article

when treatment was initiated early during PHI [13-15]. PTC are rare and the majority of the patients will have to resume cART. There are no data on the impact of transient treatment started during PHI on long-term immunologic outcome on treatment resumption. Only one study has explored the virologic impact of cART resumption, but it did not model the CD4 cell count [12].

Enrollments in the ongoing ANRS PRIMO cohort started in 1996, providing an opportunity to analyze diverse cART modalities, including the timing of treatment initiation [16]. Here we explored the impact of transient cART started during PHI on immunovirologic responses on cART resumption, by comparison with treatment initiation during the chronic phase of HIV infection (CHI).

## Methods

### Study population

The ANRS PRIMO cohort consists of 1450 HIV-infected patients enrolled during PHI between June 1996 and December 2013 in 94 French hospitals. Primary infection is confirmed by an incomplete Western blot, or detectable p24 antigenemia, or detectable plasma viral load with a negative or weakly reactive enzyme-linked immunosorbent assay (ELISA), or an interval of less than 6 months (3 months since 2002) between a negative and positive ELISA. Clinical and biological data are collected at months 1, 3 and 6 and every 6 months thereafter, as previously described [17]. The HIV envelope gene was sequenced from frozen plasma samples collected at enrolment in the cohort and HIV tropism was determined using Geno2Pheno algorithm (FPR 10%).

All patients are antiretroviral-naïve at enrollment and give their written informed consent. The cohort was approved by the Paris-Cochin Ethics Committee. No specific recommendations for treatment initiation were given in the PRIMO cohort, apart from regularly revised, French recommendations.

### Study definitions

The date of HIV infection was estimated as the date of symptom onset minus 15 days, the date of an incomplete western blot minus 1 month, or the midpoint between a negative and a positive ELISA.

Transient cART during PHI was defined as treatment that started within 3 months after the estimated date of HIV infection, lasted at least 3 months, was interrupted for at least 1 month, and was then resumed. cART initiation during CHI was defined as initiation at least 6 months after HIV infection, for at least 3 months. cART was defined as a regimen comprising at least two nucleoside reverse transcriptase inhibitors combined with either a protease inhibitor (boosted or not) or an integrase inhibitor or a non nucleoside reverse transcriptase inhibitor (NNRTI). The CD4 cell counts and HIV loads at

cART initiation/resumption are those obtained between one month before and 7 days after cART initiation.

### Statistical analyses

The response to treatment was compared between patients who started cART during CHI and those who resumed cART after transient treatment started during PHI. Time zero was the date of treatment initiation in the CHI group and the date of treatment resumption in the group with transient cART during PHI.

Baseline characteristics were compared with the Chi2 test and the Wilcoxon rank-sum test for dichotomous and continuous variables, respectively. When necessary, continuous covariates were categorized according to the median of observed values, or using published cut-off values.

Kaplan-Meier survival curves were used to analyze the time to virologic response, defined as a decrease in plasma HIV RNA to below 50 copies per milliliter, and were compared using the logrank test. Univariate and multivariate analyses were performed with Cox proportional hazards models. The proportionality assumptions were assessed by checking the log cumulative survival plots. Censoring was imposed when the patient was lost to follow-up or interrupted cART for more than 15 days. Baseline HIV load in log<sub>10</sub> copies/mL was included in the model as a continuous variable after verifying the linearity assumption.

The CD4 cell count kinetics were analyzed on a square-root scale in order to obtain a normal distribution. CD4 cell gains were modeled using piecewise linear mixed-effects models in order to take into account the correlation between measurements in a given subject. The models included both fixed and random effects for the intercept and slope. The best model (Akaike's criterion) was obtained with slope changes at M3 and M12. We modeled the CD4 cell dynamics for the first 60 months after cART initiation, during which the median number of available CD4 cell measurements was 9 per subject (IQR 6-14). Slopes of CD4 cell counts were compared between the two groups (cART initiation during CHI versus resumption after transient treatment started during PHI). Models were adjusted for age ( $\geq 40$  versus  $< 40$  years), the calendar period ( $< 2005$ ; 2005-2007;  $> 2007$ ), HIV-RNA levels ( $\geq 5$  log versus  $< 5$ ), active smoking at cART initiation/resumption, HIV transmission group (homosexual men, heterosexual men, women), geographic origin, time since HIV infection, the HIV subtype (B versus non B), and genotypic resistance at baseline.

In order to take into account the potential severity of the underlying HIV disease at baseline, the CD4 cell count at HIV primary infection diagnosis was introduced in the model. Stratified analyses were also performed, separating patients who started cART during PHI and had unfavourable baseline characteristics (CD4  $< 500$  cells/mm<sup>3</sup> and HIV load  $\geq 5$  log) from their counterparts with

favourable characteristics ( $CD4 \geq 500$  cells/mm<sup>3</sup> and HIV load  $< 5$  log).

In order to study the impact of the type and duration of first-line cART started during PHI on virological and immunological outcomes after treatment resumption, we distinguished between regimens with a boosted protease inhibitor (PI) and those with a non boosted PI or NNRTI. We also distinguished, among patients who started ART during PHI, those treated for at least 24 months and those treated for less than 24 months before cART interruption. Finally, we explored the impact of the duration of cART interruption ( $> 12$  months versus  $\leq 12$  months).

Percentage CD4 cell counts were also modeled. The best model (Akaike's criterion) for CD4% increase was obtained with one slope change at M3. The multivariate model comprised the same variables as in the CD4 cell count model.

The mean CD4 count and percentage evolution were depicted by plotting the mixed model predictions.

P values  $< 0.05$  were considered to denote statistically significant differences. Analyses were performed with STATA software (release 13; Stata Corp., College Station, Texas, USA).

### Sensitivity analysis

The following sensitivity analyses were conducted: *i*) for the immune response we restricted the analyses to the subset of sustained virologic responders, i.e. patients who achieved and maintained VL  $< 50$  copies/mL throughout treatment; *ii*) immunologic and viral analyses were repeated after excluding the 14 patients who participated in standardized treatment interruption studies (ANRS Primovac, Iliade, and ANRS Interprim [18-20]).

## Results

### Baseline characteristics

Among the 1450 patients enrolled in the ANRS PRIMO cohort, 377 started cART during CHI, while 136 patients started a second course of ART after transient treatment started during PHI. The two populations differed in terms of their baseline characteristics, as expected. Patients who initiated transient cART during PHI had lower CD4 cell counts and higher viral loads at cohort entry than those who started ART during CHI (Table 1). No difference was found according to age, baseline genotypic resistance, HIV subtype (B versus non B) and HIV-tropism (CCR5-tropic versus CXCR4 or dual X4/DM-tropic virus). Transient cART started during PHI began a median of 1.3 months (IQR 1.1-1.7) after HIV infection and lasted a median of 20 months (14-37). The median duration of ART interruption was 19 months (4-43 months). The median year of cART initiation during PHI was 2001 (1998-2003).

Table 2 compares the characteristics at cART resumption of patients who received transient cART started during PHI and the baseline characteristics of patients who started treatment during CHI. The respective median CD4 cell counts were 303/mm<sup>3</sup> (246-442) and 332/mm<sup>3</sup> (248-426),  $p = 0.90$ , and the respective median viral loads were 4.7 log<sub>10</sub> (4.2-5.3) and 4.9 log<sub>10</sub> copies/mL (4.4-5.3) ( $p = 0.7$ ).

The median time since PHI was 46 months (26-72) at cART resumption and 23 months (12-42) at cART initiation during CHI. Patients who resumed cART were older than those who initiated cART during CHI while they were the same age at PHI diagnosis. They received boosted PIs and integrase inhibitors less frequently (43% vs 59%,  $p < 0.0001$ ), probably owing to differences in the calendar periods (the median year of cART resumption/initiation was 2006 and 2009, respectively). Resumed treatment lasted significantly longer than treatment initiated during CHI: median (IQR) 47 months (23-66) versus 32 months (18-51) ( $p = 0.0002$ ).

### Virologic response

At 12 months of cART, VL was  $< 50$  copies/mL in 130 (97%) patients who resumed cART and in 369 (97%) patients who started cART during CHI. The median (IQR) time taken to reach  $< 50$  copies/mL was respectively 5.0 months (3.2-7.6) and 5.0 months (3.0-7.4), log-rank test,  $p = 0.6$ . (Figure 1); the crude hazard ratio (HR) was 0.9 (95% CI 0.8-1.1). Similar results were obtained after adjusting for age ( $\geq 40$  versus  $< 40$  years), HIV load (log<sub>10</sub>copies/mL) and the CD4 cell count at cART initiation, the period of cART initiation ( $< 2005$ ; 2005-2007;  $> 2007$ ), the HIV transmission group, place of birth, education, time since HIV infection, the HIV subtype (B versus non B) and baseline genotypic resistance. Adjustment for the type of cART regimen instead of the calendar period led to similar conclusions. As expected, higher viremia at cART initiation was predictive of slower viral suppression (HR = 0.8 for a one-log increase in HIV RNA load (95% CI 0.7-0.9),  $p = 0.001$ ). Baseline genotypic resistance was associated in multivariate analysis with slower viral suppression (HR 0.7 (95% CI 0.5-0.9),  $p = 0.02$ ). No other parameter included in the multivariate analysis was associated with the time to viral suppression.

Considering the type of cART regimen and the duration of transient cART started during PHI did not modify the conclusion.

### Immunologic response

The modelled CD4 dynamics after cART initiation are shown in Figure 2. Trends in the CD4 cell count were analyzed with a piecewise linear mixed-effects model with 3 slopes (0-3 months, 3-12 months, and  $> 12$  months). The first two slopes did not differ significantly between cART

**Table 1 Baseline cohort characteristics according to cART initiation: cART resumption after transient treatment started during PHI versus cART initiation during CHI**

	cART resumption after transient ART during PHI N = 136	cART initiation during CHI N = 377	p value
<b>Sex, % (n)</b>			
Male	80 (107)	85 (320)	0.2
<b>Age at enrolment</b>			
Median (IQR), years	37 (31–44)	36 (30–43)	0.2
<b>Transmission group, % (n)**</b>			0.2
Homosexual male	64 (79)	74 (268)	
Heterosexual male	14 (17)	11 (39)	
Female	22 (28)	15 (56)	
<b>Place of birth, % (n)</b>			0.06
France	80 (107)	87 (327)	
Sub-Saharan Africa & other	20 (26)	13 (48)	
<b>Education, % (n)</b>			0.06
Primary	11 (14)	9 (32)	
Secondary	34 (44)	46 (171)	
University	55 (72)	45 (169)	
<b>Presence of baseline genotypic resistance % (n)</b>	13 (10)	14 (50)	0.2
<b>HIV subtype B, % n</b>	79 (104)	77 (280)	0.5
<b>HIV tropism, % (n)*</b>			0.5
CCR5-tropic	89 (64)	86 (274)	
CXCR4-tropic or dual X4/DM	11 (8)	14 (43)	
<b>Hepatitis C co-infection, % (n)</b>	1.4 (5)	0.8 (1)	0.6
<b>Active smoking</b>	40 (51)	43 (157)	0.5
<b>CD4 cell count at PHI diagnosis</b>			
Median (IQR) cells/mm <sup>3</sup>	473 (323–597)	544 (420–697)	<0.001
<b>HIV load at PHI diagnosis</b>			
Median (IQR) log <sub>10</sub> C/mL	5.4 (4.9-5.9)	4.9 (4.2-5.4)	<0.001

\*Data on HIV tropism was available for 389 patients (338 CCR5-tropic and 51 CXCR4-tropic).

\*\*In 26 patients the transmission mode was other (transfusion etc.) or missing.

resumption and cART initiation during CHI, whereas the third slope did: after 12 months, patients who initiated cART during CHI had a better immunological response (+0.070  $\sqrt{\text{CD4count/month}}$ ) than those who resumed cART (+0.041 $\sqrt{\text{CD4count/month}}$ ),  $p = 0.01$  (Table 3). Therefore, at 12 months of cART the CD4 cell count gain did not differ significantly between cART resumption and cART initiation during CHI while, at 36 months of cART the CD4 cell count gain was significantly higher when cART was started during CHI, with a difference of 1.202  $\sqrt{\text{CD4count}}$  (standard error (SE) = 0.50),  $p = 0.02$ , and 1.165  $\sqrt{\text{CD4count}}$  (SE = 0.52),  $p = 0.03$  in univariate and multivariate analyses, respectively. For example, the model predicted that a patient who started cART during CHI at 300 CD4/mm<sup>3</sup> would reach 431, 517 and 625 CD4/mm<sup>3</sup> at 3, 12 and 36 months, respectively,

while a patient who resumed cART at 300 CD4/mm<sup>3</sup> after transient treatment started during PHI would reach 441, 517 and 572 CD4/mm<sup>3</sup>.

No marked change in these results was found after adjusting for age, the calendar period, HIV-RNA level, active smoking at cART initiation/resumption, the HIV transmission group, geographic origin, time since HIV infection, HIV subtype, baseline genotypic resistance, and the CD4 cell count at PHI.

When the analyses were repeated for the subset of patients with sustained viral responses (HIV-RNA < 50 copies/mL), we still found a better long-term immunological response in patients who started cART during CHI than in those who resumed cART.

CD4% was modelled with 2 slopes (0–3 months and >3 months) (Figure 2c). No difference between

**Table 2 Patient characteristics at cART resumption after transient cART started during PHI versus cART initiation during CHI**

Characteristics <sup>a</sup>	ART resumption after transient cART during PHI, N = 136		cART initiation during CHI, N = 377		p value
Age, years	43	(37–50)	40	(34–47)	<0.0001
CD4 cells/mm <sup>3</sup> <sup>b</sup>	303	(246–442)	332	(248–426)	0.9
HIV load log <sub>10</sub> copies/mL	4.7	(4.2–5.3)	4.9	(4.4–5.3)	0.7
Time between HIV infection and cART resumption/initiation, months	46	(26–72)	23	(12–42)	<0.0001
Year of cART resumption/initiation	2006	(2003–2010)	2009	(2007–2010)	<0.0001
Duration of cART after resumption/initiation, months	47	(23–66)	32	(18–51)	0.0002
Duration of viral control on cART, months	45	(22–56)	30	(18–49)	0.0007
<b>cART regimen % (n)</b>					
Boosted protease inhibitor (PI) or anti- integrase	43	(58)	59	(223)	<0.0001

<sup>a</sup>Data are medians (IQR) or % (n).

<sup>b</sup>Baseline CD4 cell count and HIV load values were obtained between 1 month before cART initiation and 7 days following cART initiation; the number of corresponding CD4 cell counts was N = 77 for patients treated during PHI and N = 234 for patients treated during CHI.

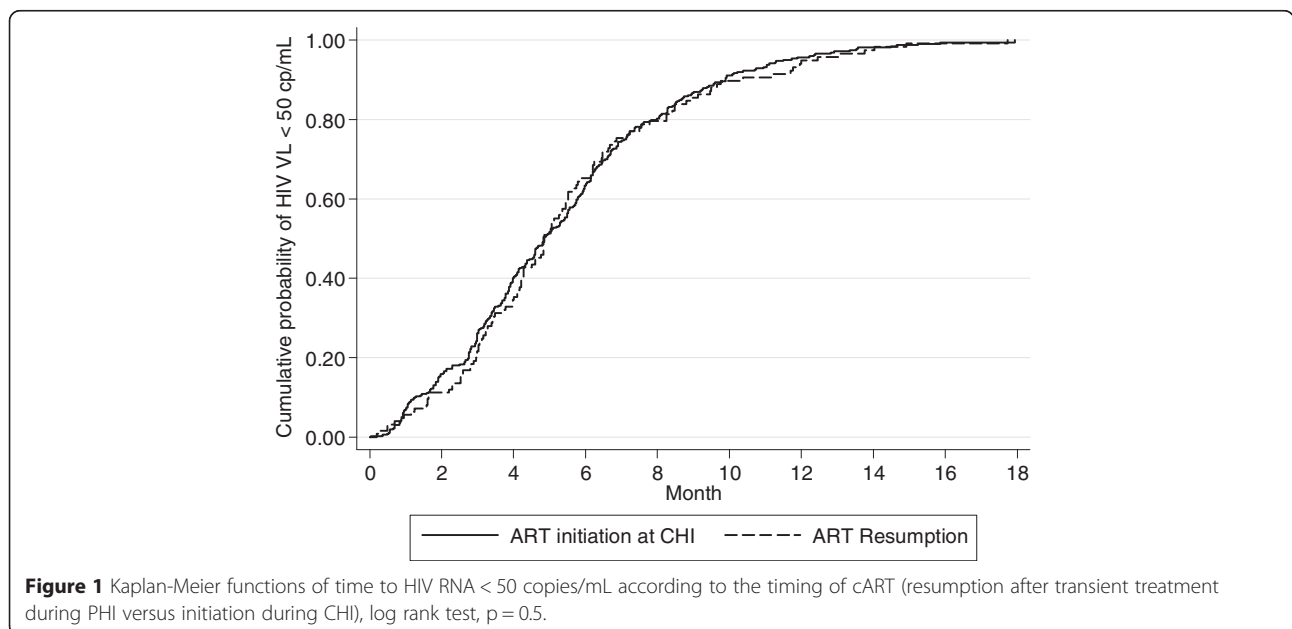
the two groups was observed in the first slope (up to 3 months), while after 3 months the slope was 0.24% CD4/month after cART initiation during CHI and 0.16% CD4/month after cART resumption,  $p = 0.001$ . Adjustment for the same variables as in the CD4 cell count analyses did not affect the results. The difference in the CD4% gain at 36 months was 2.97 higher after cART started during CHI than after cART resumption,  $p < 0.0001$ .

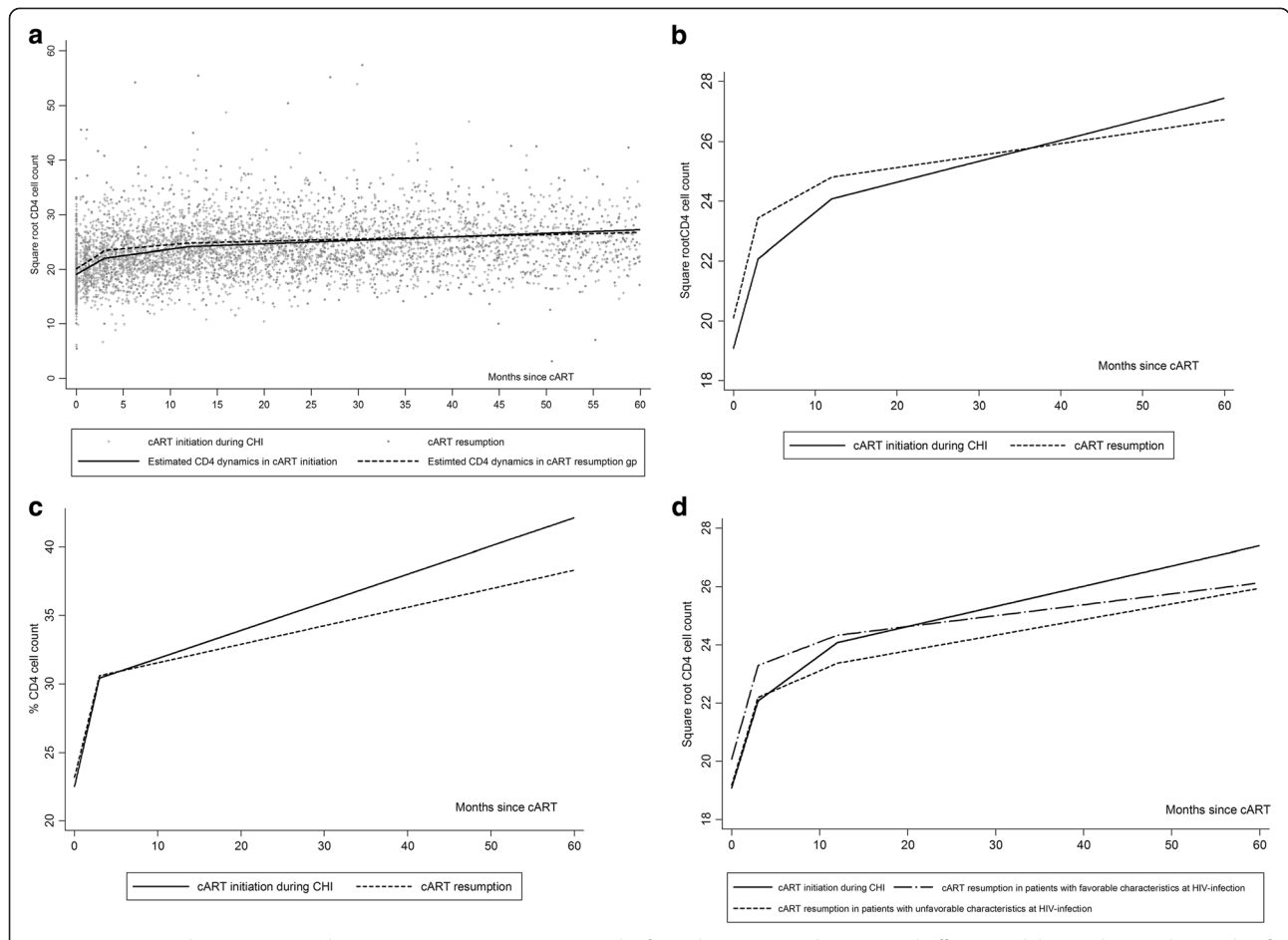
We still found better immune reconstitution in patients who started cART during CHI after stratifying for unfavourable versus favorable baseline characteristics (Figure 2d) and after taking into account the duration of cART interruption (>12 months versus  $\leq 12$  months) and

the duration of transient cART during PHI (>24 months versus  $\leq 24$  months).

**Discussion**

The virologic response to cART, analyzed in terms of the time taken to achieve HIV RNA <50 copies/mL, was similar in patients who resumed cART after transient treatment started during the primary phase of HIV infection and those who started cART during the chronic phase. The short-term immune response was also similar, being characterized by a rapid gain in CD4 cells during the first 3 months. In contrast, subsequent gains in the CD4 cell count and percentage were larger in the





**Figure 2** Estimated CD4 count evolution on cART (in square root scale) from the piecewise linear mixed-effects model according to the mode of cART initiation. **a/** cART resumption after transient treatment started during PHI versus cART initiated during CHI and the observed CD4 count values; **b/** Estimated CD4 count evolution on cART (in square root scale) from the piecewise linear mixed-effects model according to mode of cART initiation: cART resumption after transient treatment started during PHI versus cART initiated during CHI; **c/** Estimated CD4 count percentage evolution on cART from the piecewise linear mixed-effects model according to the mode of cART initiation: cART resumption after transient treatment started during PHI versus cART initiated during CHI; **d/** Estimated CD4 cell count evolution in patients who started cART during PHI with unfavourable ((cutoffs CD4 < 500 cells/mm<sup>3</sup> and HIV load ≥ 5 log) versus favorable baseline characteristics (cutoffs CD4 ≥ 500 cells/mm<sup>3</sup> and HIV load < 5 log) versus patients who started cART during CHI.

**Table 3 Immunologic response to cART according to mode of cART initiation (cART initiation during CHI versus cART resumption) from linear mixed-effects models with 3 slopes**

Parameter	Univariate estimate	SE	P value	Adjusted estimate <sup>b</sup>	SE	P value
<b>Intercept <math>\sqrt{CD4}</math> cART (reference)</b>	19.085	0.235	<0.0001			
cART resumption vs Initiation during CHI <sup>a</sup>	1.012	0.482	0.04	-0.067	0.347	0.8
<b>Slope 1 (0-3mo) <math>\sqrt{CD4}</math>/month (ref)</b>	0.995	0.058	<0.0001			
cART resumption vs initiation during CHI <sup>a</sup>	0.118	0.126	0.4	0.063	0.129	0.5
<b>Slope 2 (3-12 mo) <math>\sqrt{CD4}</math>/month (ref)</b>	0.222	0.018	<0.0001			
cART resumption vs initiation during CHI <sup>a</sup>	-0.071	0.036	0.06	-0.056	0.038	0.1
<b>Slope 3 &gt; 12 mo <math>\sqrt{CD4}</math>/month (ref.)</b>	0.070	0.007	<0.0001			
cART resumption vs initiation during CHI <sup>a</sup>	-0.029	0.011	0.01	-0.024	0.012	0.04

<sup>a</sup>Difference between cART resumption and cART initiation during CHI (reference).

<sup>b</sup>Adjusted in multivariate analysis, for age (≥40 versus <40 years), calendar period, HIV-RNA level (≥5 log versus <5), active smoking at cART initiation/resumption, HIV transmission group (homosexual men, heterosexual men, women), geographic origin, time since HIV infection, HIV subtype (B versus non B), baseline genotypic resistance, and CD4 cell count at PHI diagnosis.

patients who started cART during CHI. These differences persisted after taking into account the patients' characteristics at PHI (CD4 cell count and viral load) as a proxy for the severity of their underlying HIV disease.

This study is the first to suggest that interruption of treatment started during PHI may have a detrimental impact on the long-term immune response on treatment resumption. Randomised therapeutic trials conducted during PHI usually focus on the degree of viral rebound and CD4 cell loss after cART interruption, and not on long-term trends in CD4 cell numbers after treatment resumption. The remarkably lengthy follow-up of our cohort offers a possibility to explore this issue. We also studied the CD4 cell percentage dynamics, which is rarely reported despite being informative of immune reconstitution and complementary to the CD4 cell count [21].

The CD4 cell dynamics observed here are concordant with published data on treatment initiation during chronic HIV infection [22-26]. The overall immune response to treatment varies according to the CD4 cell count at cART initiation [22,25-27]. Patients with an initial count of 250–500 CD4 cells/mm<sup>3</sup> will gain about 200 cells/mm<sup>3</sup> during the first year of cART [27]. Reconstitution of the CD4 cell pool exhibits a biphasic pattern, with a rapid increase during the first 3 months, due to redistribution of memory cells from lymphoid tissue, followed by a substantially slower increase [22,28]. In the CASCADE collaboration, the slope of CD4 cell recovery during treatment started in CHI was similar to that observed here, with +0.95  $\sqrt{\text{CD4count}}$ /month in the first 3 months, and +0.105 $\sqrt{\text{CD4count}}$ /month thereafter [23].

It is widely agreed that interruption of long-term cART started during CHI is harmful. In the CASCADE collaboration and SMART trial, poorer immune reconstitution was observed after ART resumption than during first-line cART initiated during CHI [23,29]: two years after cART resumption the CD4 cell count had returned to the pre-interruption level in fewer than half of the patients [30].

The difference in CD4 cell recovery observed here between patients who resumed cART after transient treatment started during PHI and those who started cART during CHI might have resulted indirectly from drug resistance following cART interruption, yet no difference in the viral response was observed. Moreover, in the sensitivity analysis restricted to sustained viral responders, the CD4 count slope was still shallower in the cART resumption group.

The detrimental consequences of discontinuing cART started during CHI have been explained in terms of increases in markers of inflammation, coagulation and immune activation, coinciding with the viral rebound after cART interruption [31,32]. A similar inflammation/

activation phenomenon might also explain the results obtained here after interruption of transient cART initiated during PHI. We could also argue whether patients who initiated ART during primary HIV infection might have had a more "pro-inflammatory phenotype", which caused lower long-term CD4 increases though the effect of pro-inflammatory cytokines, such as TNF $\alpha$ . There is evidence that TNF $\alpha$  might affect CD4 count after cART interruptions in CHI [32]. The levels of T cell activation and inflammatory cytokines (IL-1 $\alpha$ , eotaxin and IL-7) during PHI have been found to be strong independent predictors of the rate of spontaneous CD4 cell count decline in untreated patients, but there are no such data for patients who interrupt transient cART initiated during PHI [32-34]. In the ANRS Interprim trial, in which serial short interruptions were programmed after treatment initiation during PHI, a gradual decrease in the mean CD4 cell count and percentage was observed over time, with no return to the mean values reached before the first interruption [20].

One limitation of our work, as in any observational study, is that the patients who interrupted cART after transient treatment started during PHI might have had different prognostic status from those who started cART during CHI. However, complementary analyses that took into account potentially unfavourable characteristics at HIV infection, as well as the duration and type of first-line cART regimen and the duration of cART interruption, yielded the same conclusions. It might also be argued that the patients who started treatment during CHI could have differed from their "usual" counterparts as they had been followed in the cohort since PHI. However, the viral response to cART initiated during CHI was similar to that observed in randomised trials [35], and the immune response was compatible with published data [22-24,28]. Of note, the CD4 cell counts were very similar in the patients who resumed cART and those who started cART during CHI, at around 300 cells/mm<sup>3</sup>, a value in line with the evolving thresholds at which French guidelines recommended treatment initiation during the 1996–2013 study period.

It may be argued that the difference in immune reconstitution is not clinically pertinent: indeed, after 36 months the mean CD4 cell count was above 500 cells/mm<sup>3</sup> in both groups. The difference between the groups was about 53 CD4 cells/mm<sup>3</sup> after 36 months of cART for a patient starting at 300 cells/mm<sup>3</sup>. However, recent data suggest that complete immune reconstitution might be defined by higher levels than the commonly accepted count of 500 cells/mm<sup>3</sup> [36], which would make our results even more relevant.

The possibility of inducing long-term immuno-virologic control by initiating ART at an early stage of HIV infection is exciting, and further research is needed to identify future post-treatment controllers (PTC) and those achieving recently described functional cure [37].



## Conclusion

Our results show that cART interruption after transient cART started during PHI has a significant, albeit modest negative impact on CD4 count reconstitution after cART resumption, an encouraging finding in the context of therapeutic trials attempting to induce PTC status. Pending the results of these studies, our findings confirm that, once initiated, cART should not be interrupted, except in research settings and under close medical surveillance.

## Competing interests

Authors declare that they have no competing interests.

## Authors' contributions

Wrote the manuscript: EK, LM, CG, RS Statistical analyses: EK, JL, HP  
Conceived and designed the cohort: LM, CG Contributed the data: AE, DM, MO, LB Agree with the manuscripts results and conclusions: EK, RS, CG, LM, HP, JL, AE, DM, MO, LB. All authors read and approved the final manuscript.

## Acknowledgments

We thank the patients and physicians participating in the ANRS PRIMO cohort; F Boufassa, L Tran, A Persoz, S Orr, N Aittahar, L Corvi and MO Wehr for monitoring and data management, and David Young for editing the manuscript.

## Members of the ANRS PRIMO are as follows

- Thierry ALLEGRE, Centre hospitalier général d'Aix en Provence, Service d'Hématologie  
- Jean-Michel LIVROZET, François JEANBLANC, Pierre CHIARELLO, Djamilia MAKHLOUFI, Hôpital Edouard Herriot de Lyon, Immunologie Clinique  
- Christian TREPO, Dominique PEYRAMOND, Patrick MIALHES, Joseph KOFFI, Valérie THOIRAIN, Corinne BROCHIER, Thomas BAUDRY, Sylvie PAILHES, Lyon La Croix Rousse, Services d'Hépatogastroentérologie et des Maladies Infectieuses  
- Alain LAFEUILLADE, Julie ALLEMAND, Edith DANIELLI, Gisèle PHILIP, Gilles HITTINGER, Assi ASSI, Alain RIEU, Véronique LAMBRY, Hôpital Font-Pré de Toulon, Médecine Interne, Hémato-Infectiologie  
- Jean-Gabriel FUZIBET, Jil-Patrice CASSUTO, Michèle QUARANTA, Hôpital L'Archet, Nice, Service de Médecine Interne  
- Pierre DELLAMONICA, Anne LEPATOIS, Alissa NAQVI, Pierre Marie ROGER, Pascal PUJLIESE; Jacques DURANT; Eric CUA; Matteo VASSALLO; Véronique MONDAIN -MITON, Hôpital de L'Archet, Nice, Maladies Infectieuses et Tropicales  
- Serge TEMPESTA, Centre Hospitalier d'Antibes, Service de Médecine Interne  
- Isabelle RAVAUX, Hôpital de la Conception de Marseille, Service des Maladies Infectieuses  
- Isabelle POIZOT MARTIN, Hôpital Sainte Marguerite de Marseille, Unité d'Hématologie  
- Hélène CHAMPAGNE, Centre Hospitalier de Valence, Maladies Infectieuses et Tropicales  
- Gilles PICHANCOURT, Centre Hospitalier Henri Duffaut d'Avignon, Service Hématologie Maladies Infectieuses  
- Philippe MORLAT, Fabrice BONNET, Isabelle LOUIS, Caroline ASLAN, Denis MALVY, Denis LACOSTE, Noëlle BERNARD, François PACCALIN, Mojgan BONAREK, Mojgan Marie-Anne VANDENHENDE, Jean DELAUN, Sabrina CALTADO, Hôpital Saint André de Bordeaux, Médecine Interne  
- Jean-Marie RAGNAUD, Michel DUPONT; Hervé DUTRONC, Frédéric DAUCHY, Charles CAZENAVE ; Audrey, MERLET, Didier NEAU, Thierry PISTONE, Elodie BLANCHARD, Laetitia LACAZE-BUZ, Hôpital Pellegrin de Bordeaux, Maladies Infectieuses.  
- Jean-Luc PELLEGRIN, Isabelle RAYMOND, Jean-François VIALLARD, Estibaliz LAZARO, Carine GREIB, Gaetane WIRTH, Severin CHAIGNE DE LALANDE, Hôpital Haut Lévêque de Bordeaux, Médecine Interne et Maladies Infectieuses  
- Francis SAINT DIZIER, Daniel GARIPUY, Hôpital Joseph Ducaing de Toulouse, Médecine Interne  
- Martine OBADIA, Marie CHAUVEAU, Florence BALZARIN, Hôpital Purpan de Toulouse, SMIT-CISIH  
- Jacques REYNES, Vincent BAILLAT, Corinne MERLE, Vincent LEMOING, Nadine ATOUI, Alain MAKINSON, Jean Marc JACQUET, Christina PSOMAS, Antoine VILLADERO, Christine TRAMONI, Hôpital Guide Chauliac de Montpellier, Service des Maladies Infectieuses et Tropicales  
- Hugues AUMAITRE, Mathieu SAADA, Marie MEDUS, Martine MALET, Orélia EDEN, Ségolène NEUVILLE, Milagros FERREYRA, Hôpital Saint Jean de Perpignan, Service des Maladies Infectieuses  
- André CABIE, Sylvie ABEL, Sandrine PIERRE-FRANCOIS, Guillaume HURTREL, Patrick HOCHÉDEZ, Guillaume AVENIN, Nicolas VIGNIER, Bernard LIAUTAUD, Christelle BARINGTHON, CHU Fort de France, Hôpital de Jour  
- Isabelle LAMAURY, CHU de Pointe à Pitre/ABYMES, Service de Dermatologie/ Maladies Infectieuses  
- Geneviève BECK-WIRTH, Catherine MICHEL, Jean-Michel PETER, Charles BECK, Jean-Michel HALNA, Meryem BENOMAR, Hôpital Emile Muller de Mulhouse, Hématologie Clinique  
- Bruno HOEN; Christine DROBACHEFF-THIEBAUT, Jean-François FAUCHER, Adeline FOLTZER, François PARCELIER, Catherine BOURDEAUX, Jean-Marie ESTAVOYER - Hôpital St Jacques de Besançon, Service des Maladies Infectieuses et de Dermatologie  
- Lionel PIROTH, Marielle BUISSON, Sandrine TREUVELOT, Hôpital du Bocage de Dijon, Service des Maladies Infectieuses  
- Thierry MAY, Laurence BOYER, Simone WASSOUMBOU, CHU de Vandoeuvre-lès-Nancy, Hôpital de Brabois, Service des Maladies Infectieuses et Tropicales  
- Masha MOHSENI ZADEH, Martin MARTINOT, Anaïs MOTHES, Anne PACHART, Hôpital Louis PASTEUR de Colmar, Service d'Immunologie Clinique  
- Benoît MARTHA, Centre Hospitalier William Morey de Chalon Sur Saône, Service de Médecine Interne  
- David Rey, Maria PARTISANI, Christine CHENEAU, Michèle PRIESTER, Claudine BERNARD-HENRY, Erick De MAUTORT, Patricia FISCHER, Service le Trait d'Union, Hôpitaux Universitaires de Strasbourg  
- Yazdan YAZDANPANAH, Thomas HULEUX, Faiza AJANA, Isabelle ALCARAZ, Christophe ALLIENNE, Véronique BACLET, Antoine CHERET, Xavier de la TRIBONNIERE, Hugues MELLIEZ, Agnès MEYBECK, Bertrand RIFF, Michel VALETTE, Nathalie VIGET, Emmanuelle AISSI, Centre Hospitalier DRON de Tourcoing, Service de Maladies Infectieuses  
- Dominique MERRIEN, Centre Hospitalier de Compiègne, Service de Médecine Interne  
- Georges DIAB, CH de la Haute Vallée de l'Oise de Noyon, Service de Médecine  
- Gilles Blaison, Mahsa Mohseni Zadeh, Martin Martinot and Anne Pachart, Hôpital Pasteur, Colmar, France  
- François RAFFI, Bénédicte BONNET, Clotilde ALLAVENA, Jean-Philippe TALARMIN, Olivier MOUNOURY, Véronique RELIQUET, Eric BILLAUD, Cecile BRUNET, Sabelline BOUCHEZ, Nicolas FEUILLEBOIS, David BOUTOILLE, Hervé HUE, Delphine BROUSSEAU, Hôtel-Dieu de Nantes, CISH Médecine Interne  
- Faouzi SOUALA, Christian MICHELET, Pierre TATTEVIN, Cedric ARVIEUX, Matthieu REVEST, Helene LEROY, Jean-Marc CHAPPLAIN, Matthieu DUPONT, Fabien FILY, Maja RASJTJACK, CHRU Pontchaillou de Rennes, Clinique des Maladies Infectieuses  
- Louis BERNARD, Frédéric BASTIDES, Pascale NAU, Hôpital Bretonneau de Tours, Service des maladies Infectieuses  
- Renaud VERDON, Arnaud DE LA BLANCHARDIERE, Vincent NOYON, Anne MARTIN, Philippe FERET, CH régional Côte de Nacre de Caen, Service de Maladies Infectieuses  
- Loïc GEFFRAY, Hôpital Robert Bisson de Lisieux, Service de Médecine Interne  
- Claude BEUSCART, Corinne DANIEL, Sylvie LE MOAL, Elizabeth DUHAMEL, Anne GATEL, Elisabeth PAPE, Centre Hospitalier La Beauchée de Saint-Brieuc, Médecine Interne et Maladies Infectieuses  
- Pascale FIALAIRE, Jean Marie CHENNEBAULT, Valérie Rabier, Pierre ABGUEGUEN, Sami REHALEM, Centre Hospitalier Régional d'Angers, Service des Maladies Infectieuses  
- Odile LUYCXC, Mathilde NIAULT, Philippe MOREAU, Centre Hospitalier Bretagne Sud de Lorient, Service d'Hématologie  
- Yves POINSIGNON, Anabèle DOS SANTOS, Virginie MOUTON-RIOUX, Centre Hospitalier Bretagne Atlantique de Vannes, Service de Médecine Interne et Maladies Infectieuses  
- Dominique HOULBERT, Sandrine ALVAREZ-HUVE, Frédérique BARBE, Sophie HARET, Centre Hospitalier d'Alençon, Médecine 2  
- Philippe PERRE, Sophie LEANTEZ-NAINVILLE, Jean-Luc ESNAULT, Thomas GUIMARD, Isabelle SUAUD, Centre Hospitalier Départemental de La Roche sur Yon, Service de Médecine  
- Jean-Jacques GIRARD, Véronique SIMONET, Hôpital de Lôches, Service de Médecine Interne  
- Yasmine DEBAB, CHU Charles Nicolle de Rouen, Maladies Infectieuses et Tropicales

- Christine JACOMET, Florence GOURDON, Hacène TAS, Hôpital Gabriel-Montpied de Clermont Ferrand , Service des Maladies Infectieuses et Tropicales

- Claire GENET, Hôpital DUPUYTREN de Limoges, Maladies Infectieuses et Tropicales

- Bruno ABRAHAM, Centre Hospitalier de Brive, Département de maladies Infectieuses

- Alain REGNIER, Centre Hospitalier de Vichy, Service de Médecine Interne

- Odile ANTONIOTTI, Centre Hospitalier de Montluçon, Dermatologie

- Jean-Michel MOLINA, Samuel FERRET, Matthieu LAFAURIE, Nathalie COLIN DE VERDIERE, Diane PONSCARME, Nathalie DE CASTRO, Alexandre ASLAN, Willy ROZENBAUM, Jerome GOGUEL, Claire PINTADO, Suna BALKAN, Sebastien GALLIEN, François CLAVEL, Olivier TAULERA, Caroline GATEY, Valérie GARRAIT, Hôpital Saint Louis de Paris, Service des Maladies Infectieuses et Tropicales

- Caroline LASCOUX-COMBE, Olivier TAULLERA, Claire PINTADO, Jeannine DELGADO, Hôpital Saint Louis de Paris, Service de Médecine Interne

- Julie TIMSIT, Hôpital Saint Louis de Paris, Clinique MST

- Laurence GERARD, Hôpital Saint Louis de Paris, Service d'Immunologie Clinique

- Pierre-Marie GIRARD, Odile PICARD, Jürgen TREDUP, Diane BOLLENS, Nadia VALIN, Pauline CAMPA, Nelly DESPLANQUE Hôpital Saint Antoine de Paris, Service des Maladies Infectieuses et Tropicales

- Patrick YENI, Bao PHUNG, Bilguissa DIALLO, Frédérique GUIROY, Nadia EL ALAMI TALBI, Golriz PAHALAVAN, Françoise LOUNI, G. Hospitalier Bichat-Claude Bernard de Paris, Service de Maladies Infectieuses et Tropicales

- Catherine LEPORT, Corinne JADAND, G. Hospitalier Bichat-Claude Bernard de Paris, Service des Maladies Infectieuses et Tropicales

- Gilles PIALOUX, Thomas LYAVANC, Laurence SLAMA, Valérie BERREBI, Hopital Tenon de Paris , Service des Maladies Infectieuses

- Aurélie Durel, Agathe RAMI, Maguy PARRINELLO, Hôpital Lariboisière de Paris, Service de Médecine Interne A

- Loïc GUILLEVIN, Dominique SALMON, Tassadit TAHI, Catherine CHAKVETADZE, Linda BELARBI, Odile LAUNAY, Benjamin SILBERMANN, Firouze BANI SADR, Marie-Pierre PIETRI, G. H. Cochin de Paris, Département de Médecine Interne

- Anne SIMON, Manuela BONMARCHAND, Naouel AMIRAT, François PICHON, Jean-Luc VOURCH, Michele PAUCHARD, G. H. Pitié-Salpêtrière de Paris, Service de Médecine Interne

- Christine KATLAMA, Marc Antoine VALANTIN, Roland TUBIANA, Fabienne CABY, Luminita SCHNEIDER, Sophie SEANG, Hind STITOU, Saadia BEN ABDALLAH , G. H. Pitié-Salpêtrière de Paris, Service des Maladies Infectieuses

- Laurence WEISS, Martin BUISSON, Hôpital Européen Georges Pompidou de Paris, Service d'Immunologie Clinique

- Jean-Paul VIARD, Jacques GILQUIN, Alain SOBEL, Blanka HADACEK, Ngyen THU-HUYN, Olivier ZAK-DIT-ZBAR, Agnes CROS - Hôtel Dieu de Paris, Centre de Diagnostic et Thérapeutique

- Paul Henri CONSIGNY, Claudine DUVVIER, Fatima TOUAM, Centre Médical de l'Institut Pasteur de Paris, Service des Maladies Infectieuses

- Loïc BODARD, Isabelle SAURET, Sylvie GIBERT, Institut Mutualiste Montsouris de Paris, Département de Médecine Interne

- Jean-François DELFRAISSY, Cécile GOJJARD, Jade GHOSN, Yann QUERTAIN-MONT, Martin DURACINSKY, Olivier SEGERAL, Arnaud BLANC, Delphine PERETTI, Valerie SEGUIN, Marie Josée DULUCQ, Hôpital de Bicêtre, Médecine Interne

- Yves LEVY, Anne Sophie LASCAUX, Jean Daniel LELIEVRE, Cécile DUMONT, Hôpital Henri Mondor de Créteil, Immunologie Clinique

- François BOUE, Renato FIOR, Hôpital Antoine Béclère de Clamart, Médecine Interne et Immunologie Clinique

- Pierre DE TRUCHIS, Huguette BERTHE, Hôpital Raymond Poincaré de Garches, Service des Maladies Infectieuses et Tropicales

- Pierre CHEVOJON, Pierre CHEVOJON, Alain DEVIDAS, Olivier PATEY, Isabelle TURPAULT, Hôpital de Corbeil-Essonnes, Service Hématologie

- Yvon LEMERCIER, Fabrice CHAIX, Isabelle TURPAULT, Centre Hospitalier Général de Longjumeau, Service de Médecine Interne

- Olivier BOUCHAUD, François ROUGES, Sophie ABGRALL, Regine BARRUET, Frederic MECHAI, Patricia HONORE, Hôpital Avicenne de Bobigny, Maladies Infectieuses et Tropicales

- Elisabeth ROUVEIX, Evelynne REIMANN, Hôpital Ambroise Paré de Boulogne, Médecine Interne

- Audrey THERBY, Alix GREDER BELAN, Claire GODIN COLLET, Maria RUQUET, Hôpital du Chesnay, CH Andre Mignot du Chesnay, Maladies Infectieuses et Tropicales

- Isabelle MAHE, Emmanuel MORTIER, Martine BLOCH, Anne-Marie SIMONPOLI, Véronique MANCERON, Isabelle CAHITTE, Ai-feng ZENG, Benedicte MONTOYA, Hôpital Louis Mourier de Colombes, Médecine Interne

- David ZUCMAN, Catherine MAJERHOLC, Dominique BORNAREL, Hôpital Foch de Suresnes , Médecine Interne

- Agnès ULUDAG, Justine GELLEN-DAUTREMER, Agnes. LEFORT, A.Tadlaoui, Hôpital Beaujon de Clichy, Médecine Interne

- Vincent DANELUZZI, Juliette GERBE, Centre Hospitalier de Nanterre, Service de Médecine Interne

- Jérôme STIRNMAN, Mélissa COUPARD, Hôpital Jean Verdier de Bondy, Service de Médecine Interne, Unité de Maladies Infectieuses

- Olivier PATEY, BANTSIMBA Jonas, Sophie DELLILLION, Pauline CARAUX PAZ, Benoit CAZENAVE, Laurent RICHIER, Centre Hospitalier Intercommunal de Villeneuve St Georges, Médecine Interne

- Valérie GARRAIT, Isabelle DELACROIX, Brigitte ELHARRAR, Laurent RICHIER, Centre Hospitalier Intercommunal de Créteil, Médecine Interne, Hépatogastroentérologie

- Daniel VITTECOQ, Lelia ESCAUT, Claudine BOLLIIOT, Hôpital de Bicêtre, Service de Maladies Infectieuses et Tropicales

- Annie LEPRETRE, Hôpital Simone Veil d'Eaubonne , Médecine 2, Consultation ESCALE

- Philippe GENET, Juliette GERBE, Consultation d'Immuno/Hématologie d'Argenteuil

- Véronique PERRONE, Centre Hospitalier François Quesnay de Mantes La Jolie, Service des Maladies Infectieuses

- Jean-Luc BOUSSARD, Patricia CHARDON, Centre Hospitalier Marc Jacquet de Melun, Service de Médecine

- Eric FROGUEL, Philippe SIMON, Sylvie TASSIE, Hôpital de Lagny, Service de Médecine Interne

#### Author details

<sup>1</sup>INSERM, U1018, Epidemiology of HIV and STI, CESP; University Paris-Sud, Le Kremlin-Bicêtre, France. <sup>2</sup>Department of Public Health and Epidemiology, Bicêtre Hospital, AP-HP, Le Kremlin Bicêtre, France. <sup>3</sup>INSERM, U1018, Gender, Sexual and Reproductive Health, Le Kremlin-Bicêtre, France. <sup>4</sup>Department of Infectious and Tropical Disease, Edouard Herriot Hospital, Lyon, France. <sup>5</sup>Department of Infectious and Tropical Disease, Purpan Hospital, Toulouse, France. <sup>6</sup>Department of Infectious and Tropical Disease, Bretonneau Hospital, Tours, France. <sup>7</sup>Department of Internal Medicine, Bicêtre Hospital, AP-HP; University Paris-Sud, Le Kremlin-Bicêtre, France.

Received: 10 October 2014 Accepted: 12 March 2015

Published online: 10 April 2015

#### References

- DHHS: Department of Health and Human Services Panel on Antiretroviral Guidelines for Adults and Adolescents. Guidelines for the use of antiretroviral agents in HIV-1-infected adults and adolescents. In Book Department of Health and Human Services Panel on Antiretroviral Guidelines for Adults and Adolescents. Guidelines for the use of antiretroviral agents in HIV-1-infected adults and adolescents. 2013.
- Hoehn B, Bonnet F, Delaugerre C, Delobel P, Goujard C, L'Henaff M, et al. French 2013 guidelines for antiretroviral therapy of HIV-1 infection in adults. *J Int AIDS Soc.* 2014;17:19034.
- EACS. European AIDS Clinical Society guidelines. In: Book European AIDS Clinical Society guidelines. Europe: European AIDS Clinical Society EACS; 2013.
- Williams I, Churchill D, Anderson J, Boffito M, Bower M, Cairns G, et al. British HIV Association guidelines for the treatment of HIV-1-positive adults with antiretroviral therapy 2012 (Updated November 2013. All changed text is cast in yellow highlight.). *HIV Med.* 2014;15:1–85.
- Ananworanich J, Schuetz A, Vandergeeten C, Sereti I, De Souza M, Rerknimitr R, et al. Impact of multi-targeted antiretroviral treatment on gut T cell depletion and HIV reservoir seeding during acute HIV infection. *PLoS One.* 2012;7:e33948.
- Taiwo B, Matining RM, Zheng L, Lederman MM, Rinaldo CR, Kim PS, et al. Associations of T cell activation and inflammatory biomarkers with virological response to darunavir/ritonavir plus raltegravir therapy. *J Antimicrob Chemother.* 2013;68:1857–61.
- Hocqueloux L, Avettand-Fenoel V, Jacquot S, Prazuck T, Legac E, Melard A, et al. Long-term antiretroviral therapy initiated during primary HIV-1 infection is

- key to achieving both low HIV reservoirs and normal T cell counts. *J Antimicrob Chemother.* 2013;68:1169–78.
8. Wawer MJ, Gray RH, Sewankambo NK, Serwadda D, Li X, Laeyendecker O, et al. Rates of HIV-1 transmission per coital act, by stage of HIV-1 infection, in Rakai, Uganda. *J Infect Dis.* 2005;191:1403–9.
  9. Fidler S, Porter K, Ewings F, Frater J, Ramjee G, Cooper D, et al. Short-course antiretroviral therapy in primary HIV infection. *N Engl J Med.* 2013;368:207–17.
  10. Hogan CM, Degrootola V, Sun X, Fiscus SA, Del Rio C, Hare CB, et al. The setpoint study (ACTG A5217): effect of immediate versus deferred antiretroviral therapy on virologic set point in recently HIV-1-infected individuals. *J Infect Dis.* 2012;205:87–96.
  11. Seng R, Goujard C, Desquilbet L, Sinet M, Rouzioux C, Deveau C, et al. Rapid CD4+ cell decrease after transient cART initiated during primary HIV infection (ANRS PRIMO and SEROCO cohorts). *J Acquir Immune Defic Syndr.* 2008;49:251–8.
  12. Grijzen ML, Wit FW, Jurriaans S, Kroon FP, Schippers EF, Koopmans P, et al. Temporary Treatment during Primary HIV Infection Does Not Affect Virologic Response to Subsequent Long-Term Treatment. *PLoS One.* 2014;9:e89639.
  13. Goujard C, Girault I, Rouzioux C, Lecroux C, Deveau C, Chaix ML, et al. HIV-1 control after transient antiretroviral treatment initiated in primary infection: role of patient characteristics and effect of therapy. *Antivir Ther.* 2012;17:1001–9.
  14. Lodi S, Meyer L, Kelleher AD, Rosinska M, Ghosn J, Sannes M, et al. Immunovirologic control 24 months after interruption of antiretroviral therapy initiated close to HIV seroconversion. *Arch Intern Med.* 2012;172:1252–5.
  15. Saez-Cirion A, Bacchus C, Hocqueloux L, Avettand-Fenoel V, Girault I, Lecroux C, et al. Post-treatment HIV-1 controllers with a long-term virological remission after the interruption of early initiated antiretroviral therapy ANRS VISCONTI Study. *PLoS Pathog.* 2013;9:e1003211.
  16. Krastinova E, Seng R, Yeni P, Viard JP, Vittecoq D, Lascoux-Combe C, et al. Is clinical practice concordant with the changes in guidelines for antiretroviral therapy initiation during primary and chronic HIV-1 infection? The ANRS PRIMO and COPANA cohorts. *PLoS One.* 2013;8:e71473.
  17. Chaix ML, Seng R, Frange P, Tran L, Avettand-Fenoel V, Ghosn J, et al. Increasing HIV-1 non-B subtype primary infections in patients in France and effect of HIV subtypes on virological and immunological responses to combined antiretroviral therapy. *Clin Infect Dis.* 2013;56:880–7.
  18. Levy Y, Thiebaut R, Gougeon ML, Molina JM, Weiss L, Girard PM, et al. Effect of intermittent interleukin-2 therapy on CD4+ T-cell counts following antiretroviral cessation in patients with HIV. *AIDS.* 2012;26:711–20.
  19. Goujard C, Marcellin F, Hendel-Chavez H, Burgard M, Meiffredy V, Venet A, et al. Interruption of antiretroviral therapy initiated during primary HIV-1 infection: impact of a therapeutic vaccination strategy combined with interleukin (IL)-2 compared with IL-2 alone in the ANRS 095 Randomized Study. *AIDS Res Hum Retroviruses.* 2007;23:1105–13.
  20. Goujard C, Emilie D, Roussillon C, Godot V, Rouzioux C, Venet A, et al. Continuous versus intermittent treatment strategies during primary HIV-1 infection: the randomized ANRS INTERPRIM Trial. *AIDS.* 2012;26:1895–905.
  21. Claassen CW, Diener-West M, Mehta SH, Thomas DL, Kirk GD. Discordance between CD4+ T-lymphocyte counts and percentages in HIV-infected persons with liver fibrosis. *Clin Infect Dis.* 2012;54:1806–13.
  22. Battegay M, Nuesch R, Hirschel B, Kaufmann GR. Immunological recovery and antiretroviral therapy in HIV-1 infection. *Lancet Infect Dis.* 2006;6:280–7.
  23. Touloumi G, Pantazis N, Stirnadel HA, Walker AS, Boufassa F, Vanhems P, et al. Rates and determinants of virologic and immunological response to HAART resumption after treatment interruption in HIV-1 clinical practice. *J Acquir Immune Defic Syndr.* 2008;49:492–8.
  24. Mussini C, Cossarizza A, Sabin C, Babiker A, De Luca A, Bucher HC, et al. Decline of CD4(+) T-cell count before start of therapy and immunological response to treatment in antiretroviral-naïve individuals. *AIDS.* 2011;25:1041–9.
  25. Mocroft A, Phillips AN, Gatell J, Ledergerber B, Fisher M, Clumeck N, et al. Normalisation of CD4 counts in patients with HIV-1 infection and maximum virological suppression who are taking combination antiretroviral therapy: an observational cohort study. *Lancet.* 2007;370:407–13.
  26. Ledergerber B, Lundgren JD, Walker AS, Sabin C, Justice A, Reiss P, et al. Predictors of trend in CD4-positive T-cell count and mortality among HIV-1-infected individuals with virological failure to all three antiretroviral-drug classes. *Lancet.* 2004;364:51–62.
  27. Lifson AR, Krantz EM, Eberly LE, Dolan MJ, Marconi VC, Weintrob AC, et al. Long-term CD4+ lymphocyte response following HAART initiation in a U.S. Military prospective cohort. *AIDS Res Ther.* 2011;8:2.
  28. Pakker NG, Notermans DW, De Boer RJ, Roos MT, De Wolf F, Hill A, et al. Biphasic kinetics of peripheral blood T cells after triple combination therapy in HIV-1 infection: a composite of redistribution and proliferation. *Nat Med.* 1998;4:208–14.
  29. El-Sadr WM, Lundgren J, Neaton JD, Gordin F, Abrams D, Arduino RC, et al. CD4+ count-guided interruption of antiretroviral treatment. *N Engl J Med.* 2006;355:2283–96.
  30. Mussini C, Touloumi G, Bakoyannis G, Sabin C, Castagna A, Sighinolfi L, et al. Magnitude and determinants of CD4 recovery after HAART resumption after 1 cycle of treatment interruption. *J Acquir Immune Defic Syndr.* 2009;52:588–94.
  31. Kuller LH, Tracy R, Belloso W, De Wit S, Drummond F, Lane HC, et al. Inflammatory and coagulation biomarkers and mortality in patients with HIV infection. *PLoS Med.* 2008;5:e203.
  32. Cozzi-Lepri A, French MA, Baxter J, Okhuysen P, Plana M, Neuhaus J, et al. Resumption of HIV replication is associated with monocyte/macrophage derived cytokine and chemokine changes: results from a large international clinical trial. *AIDS.* 2011;25:1207–17.
  33. Deeks SG, Kitchen CM, Liu L, Guo H, Gascon R, Narvaez AB, et al. Immune activation set point during early HIV infection predicts subsequent CD4+ T-cell changes independent of viral load. *Blood.* 2004;104:942–7.
  34. Roberts L, Passmore JA, Williamson C, Little F, Bebell LM, Mlisana K, et al. Plasma cytokine levels during acute HIV-1 infection predict HIV disease progression. *AIDS.* 2010;24:819–31.
  35. Sax PE, Tierney C, Collier AC, Fischl MA, Mollan K, Peeples L, et al. Abacavir-lamivudine versus tenofovir-emtricitabine for initial HIV-1 therapy. *N Engl J Med.* 2009;361:2230–40.
  36. Le T, Wright EJ, Smith DM, He W, Catano G, Okulicz JF, et al. Enhanced CD4+ T-cell recovery with earlier HIV-1 antiretroviral therapy. *N Engl J Med.* 2013;368:218–30.
  37. Persaud D, Gay H, Ziemniak C, Chen YH, Piatka Jr M, Chun TW, et al. Absence of detectable HIV-1 viremia after treatment cessation in an infant. *N Engl J Med.* 2013;369:1828–35.

**Submit your next manuscript to BioMed Central and take full advantage of:**

- Convenient online submission
- Thorough peer review
- No space constraints or color figure charges
- Immediate publication on acceptance
- Inclusion in PubMed, CAS, Scopus and Google Scholar
- Research which is freely available for redistribution

Submit your manuscript at  
[www.biomedcentral.com/submit](http://www.biomedcentral.com/submit)

