



**HAL**  
open science

## Reciprocal projections in hierarchically organized evolvable neural circuits affect EEG-like signals.

Vladyslav Shaposhnyk, Alessandro E. P. Villa

► **To cite this version:**

Vladyslav Shaposhnyk, Alessandro E. P. Villa. Reciprocal projections in hierarchically organized evolvable neural circuits affect EEG-like signals.. *Brain Research*, 2012, 1434, pp.266-76. 10.1016/j.brainres.2011.08.018 . inserm-00851276

**HAL Id: inserm-00851276**

**<https://www.hal.inserm.fr/inserm-00851276>**

Submitted on 13 Aug 2013

**HAL** is a multi-disciplinary open access archive for the deposit and dissemination of scientific research documents, whether they are published or not. The documents may come from teaching and research institutions in France or abroad, or from public or private research centers.

L'archive ouverte pluridisciplinaire **HAL**, est destinée au dépôt et à la diffusion de documents scientifiques de niveau recherche, publiés ou non, émanant des établissements d'enseignement et de recherche français ou étrangers, des laboratoires publics ou privés.

# Reciprocal projections in hierarchically organized evolvable neural circuits affect EEG-like signals

Vladyslav Shaposhnyk<sup>a</sup>, Alessandro E.P. Villa<sup>a</sup>

<sup>a</sup>INSERM U836; Grenoble Institute of Neuroscience; Université Joseph Fourier, Eq7 Nanomédecine et Cerveau, Grenoble, France

---

## Abstract

Modular architecture is a hallmark of many brain circuits. In the cerebral cortex, in particular, it has been observed that reciprocal connections are often present between functionally interconnected areas that are hierarchically organized. We investigate the effect of reciprocal connections in a network of modules of simulated spiking neurons. The neural activity is recorded by means of virtual electrodes and EEG-like signals, called electrochipograms (EChG), analyzed by time- and frequency-domain methods. A major feature of our approach is the implementation of important bio-inspired processes that affect the connectivity within a neural module: synaptogenesis, cell death, spike-timing-dependent plasticity and synaptic pruning. These bio-inspired processes drive the build-up of auto-associative links within each module, which generate an areal activity, recorded by EChG, that reflect the changes in the corresponding functional connectivity within and between neuronal modules. We found that circuits with intra-layer reciprocal projections exhibited enhanced stimulus-locked response. We show evidence that all networks of modules are able to process and maintain patterns of activity associated with the stimulus after its offset. The presence of feedback and horizontal projections was necessary to evoke cross-layer coherence in bursts of  $\gamma$ -frequency at regular intervals. These findings bring new insights to the understanding of the relation between the functional organization of neural circuits and the electrophysiological signals generated by large cell assemblies.

**Keywords:** spiking neural networks, computational neuroscience, electro-encephalography, genetics, hierarchical circuits, evolvable systems

---

## 1. Introduction

Brain activity recordings by means of electroencephalography (EEG), electrocorticography (ECoG) and local field potentials (LFP) collect signals generated by multiple cell assemblies. The neurophysiological processes underlying those signals are determined by highly non-linear dynamical systems (Freeman, 1975; Nunez and Srinivasan, 2006). The complexity of these processes opened the way to large-scale simulations and neural mass models that were mainly focused on the detection of scale-free invariants and self-organized activity (Wright, 1999; Freeman, 2005; Breakspear and Stam, 2005; Deco et al., 2008; Goodfellow et al., 2011).

Mathematical and computational models relying on neurophysiological models of EEG signals have been proposed, generally based on population dynamics (Knight, 2000; Drover et al., 2010), pulsed coupled oscillators (Ly and Ermentrout, 2009) and coupled neural masses (Sotero et al., 2007; Ursino et al., 2010). The simulation studies of event-related EEG performed with these models have emphasized how modulation of the strengths of positive and negative feedback between brain modules may affect the wave shape and the time course of event-related potentials (ERPs) (Rennie et al., 2002) and in particular the emergence of damped oscillations in the presence of backward connections (David et al., 2005).

In the present study we simulate the activity of interconnected modules of spiking neurons undergoing ontogenic and

epigenetic developmental phases (Iglesias and Villa, 2007, 2010). In addition to multiple spike trains we record neuro-mimetic signals, called electrochipograms (EChG), similar to ECoG and LFP, by the means of realistic virtual electrodes (Shaposhnyk et al., 2009). The neural circuit is characterized by two layers of feed-forward networks and we study the emergent properties of stimulus response in presence of feedback projections between the layers of networks and intra-layer projections (horizontal projections). Our simulation framework introduces also genetic features such that model parameters are coded in the neuronal genome and we implement gene drift through generations of the neural circuits in order to observe general results that are shared by all generated networks. The rationale is that the Spike-timing-dependent Plasticity (STDP) embedded in the neural network models would drive the build-up of auto-associative network links, within each neural module, which generate an areal activity, detected by EChG, that would reflect the changes in the corresponding functional connectivity within and between neuronal modules.

## 2. Methods

### 2.1. Module characteristics

The characteristics of a neuronal module have been extensively studied and described elsewhere (Iglesias et al., 2005; Iglesias and Villa, 2007, 2008) and we summarize here the main

Table 1: Main parameters used for the simulation (Iglesias et al., 2005).

Parameter	Value
<b>1 Network module at birth</b>	
neurons (2D lattice $75 \times 75$ )	5,625
projections	$\approx 890,000$
external afferent e.p.s.p.	1.90 mV
background afferent e.p.s.p. <sup>(1)</sup>	1.90 mV
intensity of background activity	300 spikes/s
<b>Common cell membrane parameters</b>	
reset threshold	-78 mV
spiking threshold	-40 mV
membrane time constant	16 ms
<b>Excitatory cell population</b>	
proportion in network	80%
Gaussian maximal probability	60%
Gaussian distribution width	15 units
absolute refractory period	1 ms
e.p.s.p. <sup>(2)</sup>	1.84 mV
<b>Inhibitory cell population</b>	
proportion in network	20%
Gaussian maximal probability	20%
Gaussian distribution width	45 units
absolute refractory period	0.7 ms
i.p.s.p.	-1.64 mV

<sup>(1)</sup> equal to 3.80 mV in the *Sensory* module.  
<sup>(2)</sup> in the range 0.92-3.68 mV following STDP.

features. Each network module was simulated by a 2D lattice of  $75 \times 75$  leaky integrate-and-fire neuronal models, that includes 80% of excitatory neurons and 20% of inhibitory neurons, whose main parameters are summarized in Table 1.

A major feature of our approach is the implementation of important bioinspired processes (Iglesias and Villa, 2010) that affect the connectivity within a neural module: synaptogenesis, cell death, synaptic plasticity and synaptic pruning. During *synaptogenesis* each cell established a pattern of projections such that a cell of either type could project to a cell of either type, avoiding self-connections. The selection of the target cells was random and run independently for each cell of either type according to a 2D Gaussian probability distribution (Hill and Villa, 1997). In addition, the excitatory cells had a uniform probability of 2% to establish long-range connections throughout the neural module. On average, one excitatory cell projected to  $\sim 106$  excitatory and to  $\sim 27$  inhibitory cells (Fig. 1a). On average, one inhibitory cell projected to  $\sim 210$  excitatory and to  $\sim 52$  inhibitory cells (Fig. 1b). No spatial organization was predefined within a module. No new projection is added to the network after the initial stage of synaptogenesis.

We have implemented two types of *cell death*: “apoptosis” or programmed cell death, which is active at the begin of circuit maturation and “necrotic cell death”, which occurs when neurons do not establish enough connections with other neurons either due to an anomalous brain development or to a loss in connections (synaptic pruning) occurring at any stage after the

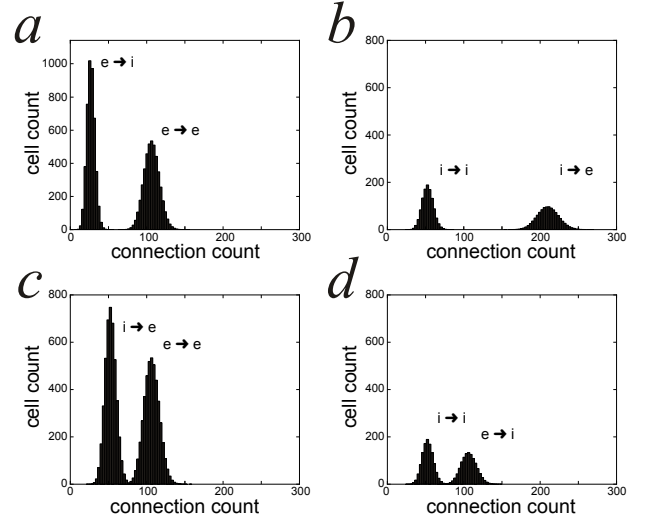


Figure 1: Cumulative distributions of the efferences (a,b) and afferences (c,d) within one neural module at the end of the synaptogenesis. (a) excitatory efferent connections to excitatory cells (e→e) and to inhibitory cells (e→i). (b) inhibitory efferent connections to excitatory cells (i→e) and to inhibitory cells (i→i). (c) excitatory afferent connections from excitatory cells (e→e) and from inhibitory cells (i→e). (d) inhibitory afferent connections from excitatory cells (e→i) and from inhibitory cells (i→i).

developmental phase (Hutchins and Barger, 1998). Apoptosis is aimed to reflect the biological massive synaptic pruning associated with cell death occurring during early stages of neural development, right after initial excessive and to some extent diffusive synapse generation (Rakic et al., 1986; Innocenti, 1995). In the current framework apoptosis was implemented according to Iglesias and Villa (2010) and was made effective during the initial 750 ms of the simulation, an interval corresponding to only 0.2% of the total duration of the simulation but accounting for the death of nearly 30% of the neurons.

*Synaptic plasticity* based on STDP was enabled at the end of the phase characterized by apoptosis. This plasticity mechanism was limited here to excitatory receptors, that means it affected both excitatory-excitatory and excitatory-inhibitory connections. The STDP modification rule was implemented according to Iglesias et al. (2005), thus reducing the synaptic weights to four discrete states determined by activation levels. The strength of inhibitory projections was unchanged during the entire simulation. Whenever the synaptic weight of any excitatory-excitatory or excitatory-inhibitory synapse reached a value of zero, due to the depression associated with STDP, the synapse died and was removed, thus leading to *synaptic pruning*. Whenever a cell lost all its excitatory inputs from within the same module because of synaptic pruning it entered a “necrotic cell death” and the cell was removed. This process was active during the whole simulation, in contrast to apoptosis which was active only during the early developmental stage.

In addition to the afferences from the other cells of the module all cells of either type received inputs from a background source. In this study the background activity was generated by uncorrelated Poisson-distributed inputs at an average rate of

300 *spikes/s* with an excitatory postsynaptic potential (e.p.s.p) of 1.90 *mV*. The sole exception to this rule was the “sensory” module that was characterized by background e.p.s.p.s of 3.80 *mV*, aimed to produce a stronger noise at the peripheral level.

## 2.2. Hierarchical network of modules

In each neuronal module two sets of cells were randomly selected among the excitatory cells of the network. They correspond to the efferent and the afferent layer of the module. In the module excited by the external stimulus (referred to as the ‘sensory’ module) each set was formed by 450 excitatory cells. In the other modules the afferent and the efferent layers were formed by 450 and 900 excitatory cells, respectively. *Synaptogenesis* includes also the establishment of the connections between neural modules following a self-reflective mapping such that the number of inter-module projections from a particular efferent neuron is proportional to the number of intra-module projections of the same neuron (Shaposhnyk et al., 2009). Then, cells of the afferent and efferent layers receive and send excitatory projections to and from other neuronal modules in addition to their intra-module connections (of both excitatory and inhibitory types like any other cell). The excitatory inter-module projections are characterized by a synaptic weight of 1.90 *mV*. In the current study these synapses are not characterized by STDP and their strength is unchanged during the entire simulation.

Four circuit graphs featuring different combinations of reciprocal inter-module links were used in this study. All modules were composed by a neural network of  $75 \times 75$  cells. An input module excited by an external stimulus is referred to as the ‘sensory’ module (S) and the other modules are referred to as ‘processing’ modules and labeled according to the layer’s position in the hierarchical organization (i.e. L1.x, L2.x, Ln.x). Figure 2 shows the circuits studied here, formed by two parallel streams and by two layers. The two main topological features of the circuits were the presence of reciprocal projections *within* each processing layer (i.e. *horizontal* connections) and the presence of reciprocal projections between successive processing layers. Then, the basic circuitry characterized by a pure *feed-forward* pattern of projections is termed FF. The FF circuit with additional *feedback* projections between layers is termed FB. Circuits are termed FFH and FBH with horizontal links added to FF and FB circuits, respectively.

## 2.3. Virtual Subjects

We have implemented a framework that supports basic evolutionary features. Each next-generation circuit is produced by a parent circuit with a probability specified by a fitness function at the time corresponding to the end of the simulation of the parent’s circuit. In this study we use a dummy fitness function that always provides a 100% probability of replication, but the framework supports user-defined or behaviorally-defined fitness functions. At the time of the replication a mutation operator introduces variability in the circuit’s properties.

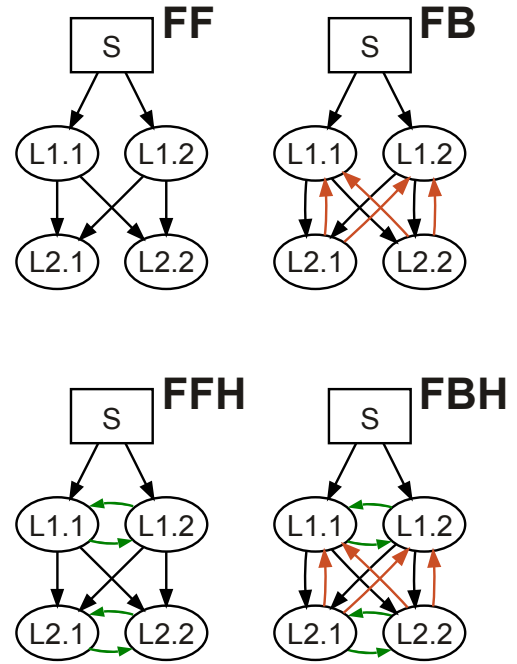


Figure 2: Four hierarchical circuits used in the experiment. The arrows depict projections and directions of information flow between the neural network modules. FF: feed-forward topology without horizontal projections within the same processing layer; FB: same as FF with feedback projections between successive layers (orange arrows); FFH: feed-forward topology *with* reciprocal projections within processing layer (horizontal connections labeled with green arrows); FBH: same as FBH with additional feedback projections

In the current study we applied the multiple bit-flip mutation operator, which is an extension of the single bit-flip operator (Langdon, 2010), to the gene that coded the “connectivity seed” (the other parameters such as the e.p.s.p. were left fixed here) A small variation of this gene is enough to produce drastically different intra-module connection maps, while preserving the distribution of the connections; the same seed will warrant that the connectivity map is the same, which is useful for the reproducibility of results. For any given circuit graph we considered 21 generations that corresponds to 21 different virtual subjects, each one being characterized by a random mutation of the ‘connectivity seed’ gene.

## 2.4. External stimulation and Inter-Stimulus Interval

The external stimulation was applied by means of a spatiotemporal stimulus fed to the afferent cells of the sensory module (Shaposhnyk et al., 2009). The stimulus lasted 500 *ms* and activated each afferent cell once per 10 *ms* on average. Each stimulus was followed by a silent period of 1000 *ms* called inter-stimulus interval (ISI). The duration corresponding to the stimulus application and ISI is called an elementary stimulus “trial”. The stimulation was repeated regularly at a rate of 0.67 *Hz* given the trial duration of 1500 *ms*. At each repetition the pattern was slightly modified by introducing a 10% variability of the initial motif. A jitter of  $\pm 1$  *ms* was introduced in the activation time of 10% of randomly selected sensory afferent cells. This straightforward procedure was repeated irrespective

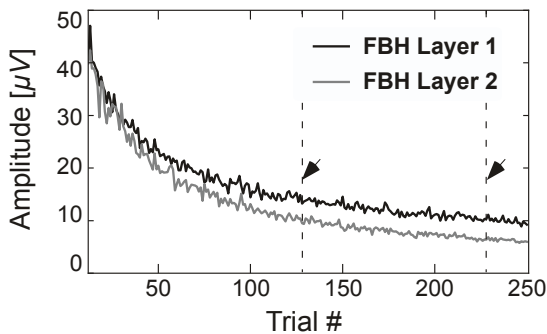


Figure 3: Time course of the peak-to-peak amplitude of the EChG for each layer of circuit FBH measured during the ISI as a function of the trial number. Each point is the average of 84 recordings. The dashed lines and the arrows indicate the range between trials #128 and #228 that has been selected for further averaging for event-related analysis.

of the selected cells, so that a cell could be selected more than once by chance and the final jitter becoming more than  $\pm 1$  ms. This occurrence introduced even greater variability but it happened only rarely.

### 2.5. Virtual electrodes

A virtual electrode recorded a neuro-mimetic signal, called electrochipogram (EChG), over a certain “area” of 2D neuronal lattice according to the appropriate weights describing the electrode’s sensitivity (Shaposhnyk et al., 2009). The main parameters of the electrode are its position over the module, its coverage area and its sensitivity function. In this study the electrode’s sensitivity was limited by a circular area with a radius of 19 cells and the sensitivity function was decaying linearly from the center (100%) to its edge (0%). Two electrodes, one located in the top-left “extremity” of the 2D lattice and the second one located in the bottom-right “extremity”, were placed in each module. The dual recording is performed only to gather additional signals for data analysis and reduce the effect of the noise embedded in the signal. Indeed, no difference between the electrode locations is expected because of the wrapped toroidal model of the network’s lattice and the random distribution of the efferent and the afferent cells across each module.

## 3. Results

### 3.1. Electrochipograms and Event-Related Potentials

The total duration of a single simulation run lasted 375 seconds (250 trials of 1500 ms each). In order to improve the signal-to-noise ratio of the EChG in the time-domain we have calculated ERPs by averaging several recordings triggered by the same stimulus onset. The average was extended across all 21 different virtual subjects obtained by genome mutation. For each circuit graph the EChG signal was recorded by two virtual electrodes per module. Moreover, we grouped together the four recordings performed from within the same layer of modules (2 recordings  $\times$  2 modules per layer). This means that for each

circuit graph and for each layer of the circuit we analyzed the signals averaged across 84 recordings ( $= 21 \times 2 \times 2$ ).

The effect of network maturation due to plasticity, synaptic pruning and cell death processes is illustrated by the time course of the peak-to-peak amplitudes of the EChG signal measured during the ISI of successive trials (Fig. 3). The curves show that the maximum amplitude of Layer 2 activity tended to decrease more than in Layer 1 until approximately trial #100. After this time both layers showed a tendency to decrease the maximum level of activity but their relative difference remained unchanged. For ERP analysis we decided to select an arbitrary range of 100 trials between trials #128 and #228 for further averaging. This means that ERPs were analyzed across a grand average of 8400 trials ( $= 21 \times 2 \times 2 \times 100$ ).

Let us consider  $X_{ISI}$ , the signal recorded during the ISI periods, and  $X_1, X_2, \dots, X_n$  the points of  $X_{ISI}$ . Let us define  $MAD_{ISI}$  as the median of the absolute deviations from the data’s median (Hoaglin et al., 2000). The value of  $MAD_{ISI}$ , the median absolute deviation amplitude during ISI, is calculated as  $MAD_{ISI} = \text{median}_{i=1,n} (|\text{median}_{j=1,n}(X_j) - X_i|)$ . We can express the strength of the response ( $SR$ ) as the ratio between the median amplitude of ERP during the stimulus presentation and the corresponding  $MAD_{ISI}$ . For Layer 1 modules  $SR$  was equal to 7.58, 7.18, 7.68 and 7.65 for the FF, FB, FFH and FBH circuits, respectively. The values of  $SR$  for each circuit and for each layer pair were calculated with 95% confidence intervals (Table 2). These data show that in Layer 1 a moderate increase in  $SR$  by 3-7% observed in the presence of horizontal projections was not significant. For Layer 2 modules  $SR$  was significantly lower than the values found in Layer 1 (Table 2, Fig. 4). The presence of horizontal links decreased  $SR$  in Layer 2 by 10-20%. The presence of feedback projections, irrespective of the horizontal links, also reduced  $SR$  in Layer 2 response by a similar proportion. In Layer 2 these effects were cumulative and  $SR_{FBH}$  was reduced by 30% compared to  $SR_{FF}$ .

### 3.2. During the stimulation

Figure 4 shows the ERPs for each topology and each layer of the circuit. At the onset of the stimulus the amplitude of ERPs increased for Layer 1 modules, irrespective of the circuit graph. The horizontal projections emphasized the inhibitory offset response: in Layer 1 the duration of the offset inhibition

Table 2:  $SR$  confidence interval calculated according to the smoothed percentile bootstrap methodology (Efron, 1979).

Layer	Circuit	$SR$	95% confidence	
			lower	higher
L1	FB	7.180	6.020	8.938
	FBH	7.645	6.532	8.904
	FF	7.580	6.626	9.060
	FFH	7.678	6.516	9.111
L2	FB	2.011	1.510	2.581
	FBH	1.837	1.381	2.187
	FF	2.661	1.972	3.278
	FFH	2.054	1.592	2.504

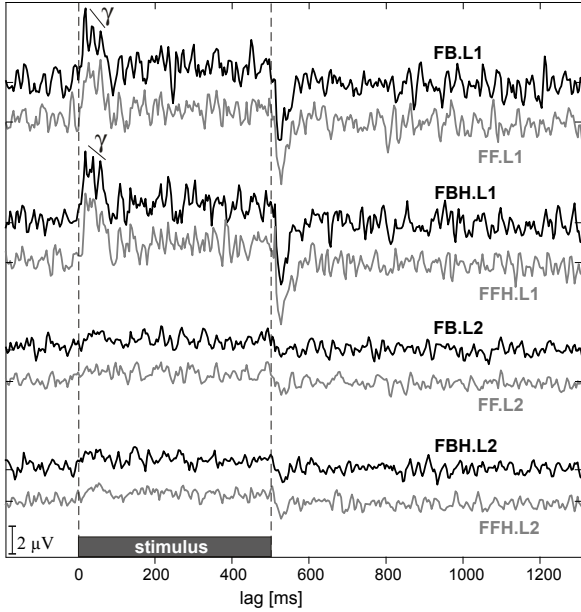


Figure 4: ERPs averaged across 21 virtual subjects, 8400 trials overall, triggered by stimulus onset (at lag 0). The dotted lines at 0 and 500 *m* correspond to the onset and offset of the stimulus. A Blackman-Tukey curve smoothing with a window of 20 *ms* was applied to eliminate high frequency components (Blackman and Tukey, 1959). The labels refer to the circuit and to the order of the layer. Black curves refer to ERPs recorded in FB and FBH circuits. Gray curves refer to ERPs recorded in FF and FFH circuits. Notice the burst of  $\gamma$ -oscillations after stimulus onset in FB.L1 and FBH.L1.

was prolonged by approximately 40 *ms*; in Layer 2 the offset inhibition was sharper.

Trials #128 to #228 were used for the computation of the power spectrum (PSD) (Fig. 5) and we averaged the trial-by-trial PSDs. In any circuit, PSD power in Layer 1 was larger than in Layer 2 for all frequencies (Fig. 5a,d). This difference is due to the direct input from the sensory module to Layer 1. We have assessed the effect of introducing feedback projections in the circuits by computing the difference between the PSDs with and without feedback projections (FB and FBH *vs.* FF and FFH, respectively). For each bin of the power difference curves we calculated the 95% confidence interval based on the distribution of the trial-by-trial difference in PSDs. We consider here the frequency bands  $\alpha$ ,  $\beta$  and  $\gamma$  in the ranges [5-20], [20-40], and [40-100] *Hz*, respectively. The shifts in the range limits of the frequency bands towards higher frequencies are determined by the smallness of the network size of a module with respect to a realistic brain area (data not shown from our study and beim Graben and Kurths, 2008). The power of  $PSD_{FB,L1}$  and  $PSD_{FBH,L1}$  was larger due to the presence of the feedback, as shown by the curves of the power differences that tended to stay above the zero line (Fig. 5b,e). In particular we observed two significant peaks in the differential curves of Layer 1 of either circuit. In the presence of additional horizontal links both significant peaks were in the  $\gamma$ -range tended to stay above the zero line (Fig. 5e). Notice that a burst of  $\gamma$ -oscillations appeared immediately after the stimulus onset in the presence of feedback projections (Fig. 4).

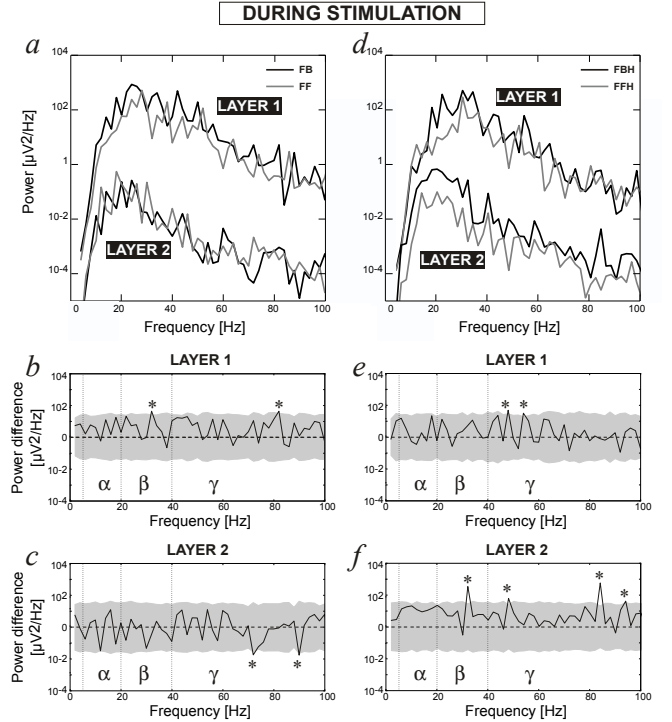


Figure 5: Averaged Power Spectrum Densities during the stimulus presentation in Layer 1 and Layer 2 of FB, FF circuits (panel a) and circuits with horizontal links, FBH and FFH (panel d). Black curves refer to circuits with feedback projections and gray lines to feed-forward circuits. The difference  $PSD_{FB} - PSD_{FF}$  with the 95% two-tailed confidence intervals (limits of the shaded area) for Layer 1 and Layer 2 is plotted in panels b,c, respectively. The difference  $PSD_{FBH} - PSD_{FFH}$  for Layer 1 and Layer 2 is plotted in panels e,f, respectively. The analysis is performed with a resolution of 2 *Hz*. The asterisks are used to label the significant peaks of the differential curves. We consider here the frequency bands  $\alpha$ ,  $\beta$  and  $\gamma$  in the ranges [5-20], [20-40], and [40-100] *Hz*, respectively.

It is noticeable that in Layer 2 the horizontal links increased even further the overall power of PSD and particularly the  $\gamma$ -oscillations (Fig. 5f). On the opposite, in the absence of horizontal links,  $PSD_{FB,L2}$  was characterized by a power that tended to be smaller than  $PSD_{FF,L2}$ , in particular in the  $\gamma$ -range (Fig. 5c). Then, PSD analysis showed that Layer 2 activity during the stimulation was very much affected by the circuit connectivity.

Figure 6 shows the dynamics of the ERPs on a trial-by-trial average with 84 traces averaged for each trial. For Layer 1, the comparison of Fig. 6a and Fig. 6c shows that the presence of horizontal connections is not only making the onset excitation and the offset inhibition sharper but it greatly reduced the inter-trial variability. It is interesting to notice that before trial#128 inhibitory onset responses appeared transiently in Layer 2 with any kind of connectivity among the modules (Fig. 6b,d). This pattern occurred briefly again near trial#180 only in the FB circuit (Fig. 6b, left panel).

### 3.3. During the Inter-Stimulus Interval

During the ISI, Layer 1 was characterized by a power larger than Layer 2 at all frequencies (Fig. 7a,d), in a way similar to

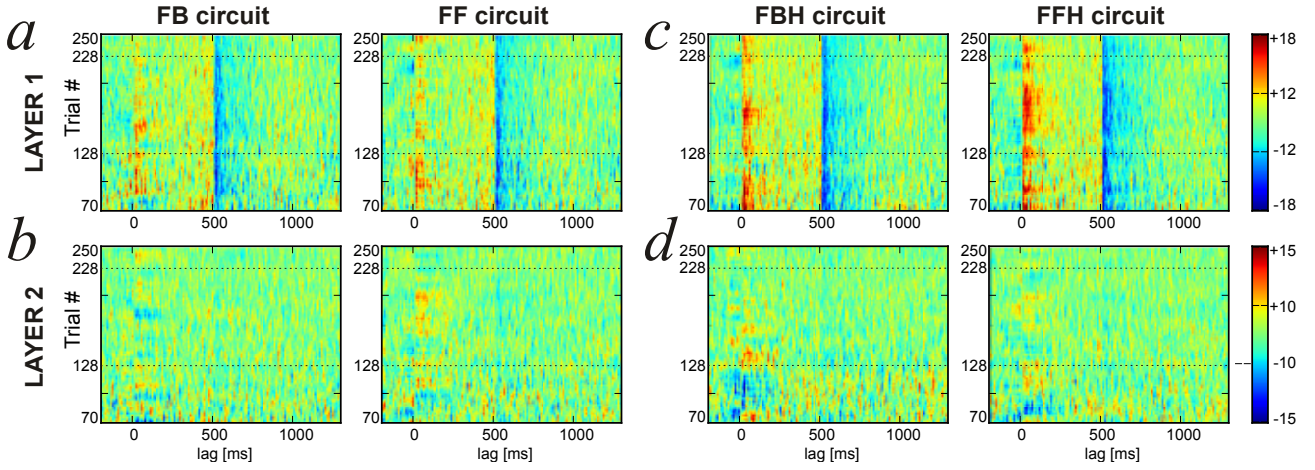


Figure 6: Trial-by-trial dynamics of the ERPs in Layer 1 (panels a,c) and Layer 2 (panels b,d) of circuits with feedback projections (left column) and in presence of horizontal projections (panels c,d). The amplitude of the ERPs is scaled in  $\mu V$  and color-coded following the colors on the right scale. The dotted lines at trials #128 and #228 indicate the range that was used to calculate the grand averaging.

what was observed during the stimulation. In Layer 1 the presence of feedback projections in the circuit tended to increase the number of significant peaks in the  $\gamma$ -range, (Fig. 7b,e) especially in the absence of horizontal links (Fig. 7b). It is interesting to notice that the PSD in FB.L2 and FF.L2 were very similar (Fig. 7a,c). On the opposite, the presence of both horizontal and feedback connections increased the power of FBH.L2 vs. FFH.L2 throughout the frequency range (Fig. 7d), in particular in the  $\gamma$ -range (Fig. 7f).

### 3.4. Cross-Layer Time/Frequency Analysis

The assessment of the correlation between EChGs from Layer 1 and Layer 2 in the frequency and in the time domains on a trial-by-trial basis was performed by the cross-coherence analysis between trials #128 and #228. The cross-coherence  $XCOH^{A,B}(f,t)$  between two channels, A and B, at the given frequency  $f$  in the time-window centered on  $t$  is calculated according to the equation

$$XCOH^{A,B}(f,t) = \frac{1}{n} \sum_{k=1}^n \frac{F_k^A(f,t)F_k^B(f,t)^*}{|F_k^A(f,t)F_k^B(f,t)|},$$

where  $F_k^A(f,t)$  and  $F_k^B(f,t)$  are short-time Discrete Fourier Transforms of signals A and B, and  $F_k^B(f,t)^*$  is the complex conjugate of  $F_k^B(f,t)$  (Delorme and Makeig, 2004). The value of the cross-coherence varies between 0 meaning a complete absence of synchronization and 1 meaning perfect synchronization.

The cross-layer coherence for each circuit type is illustrated in Fig. 8. The significance of the coherence values was assessed by bootstrap statistics (Delorme and Makeig, 2004) such that non-significant values ( $2p < 5\%$ ) were zeroed for the sake of the colored drawing of the map of Fig. 8. We use the same  $\alpha$ ,  $\beta$ , and  $\gamma$  frequency bands defined above. The presence of the horizontal links decreased the vast majority of the cross-layer coherence throughout the frequency spectrum (Fig. 8a,b vs. Fig. 8c,d). Notice the strong cross-layer coherence for all

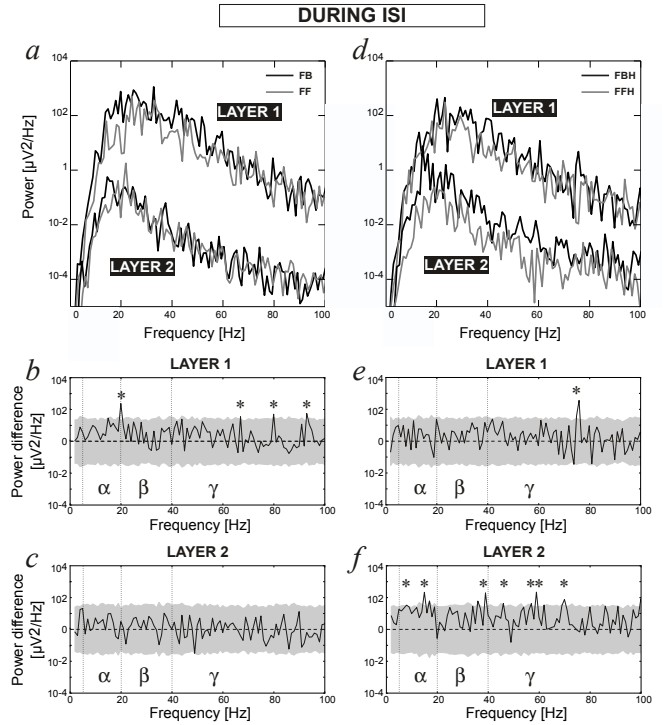


Figure 7: Averaged Power Spectral Densities during ISI in Layer 1 and Layer 2 of FB, FF circuits (left panels) and circuits with horizontal links, FBH and FFH (right panels). The analysis is performed with a resolution of 1 Hz. We consider here the frequency bands  $\alpha$ ,  $\beta$  and  $\gamma$  in the ranges [5-20], [20-40], and [40-100] Hz, respectively. The labels are the same as in Figure 5.

circuits at very low frequencies right at the stimulus offset (lag = 500 ms) due to the offset inhibition visible also in the ERPs (Fig. 4).

During the stimulus presentation the cross-layer coherence was strong in the  $\alpha$ -band at  $\sim 150$  ms after the stimulus onset in all circuits (Fig. 8, small arrows). The presence of the feedback

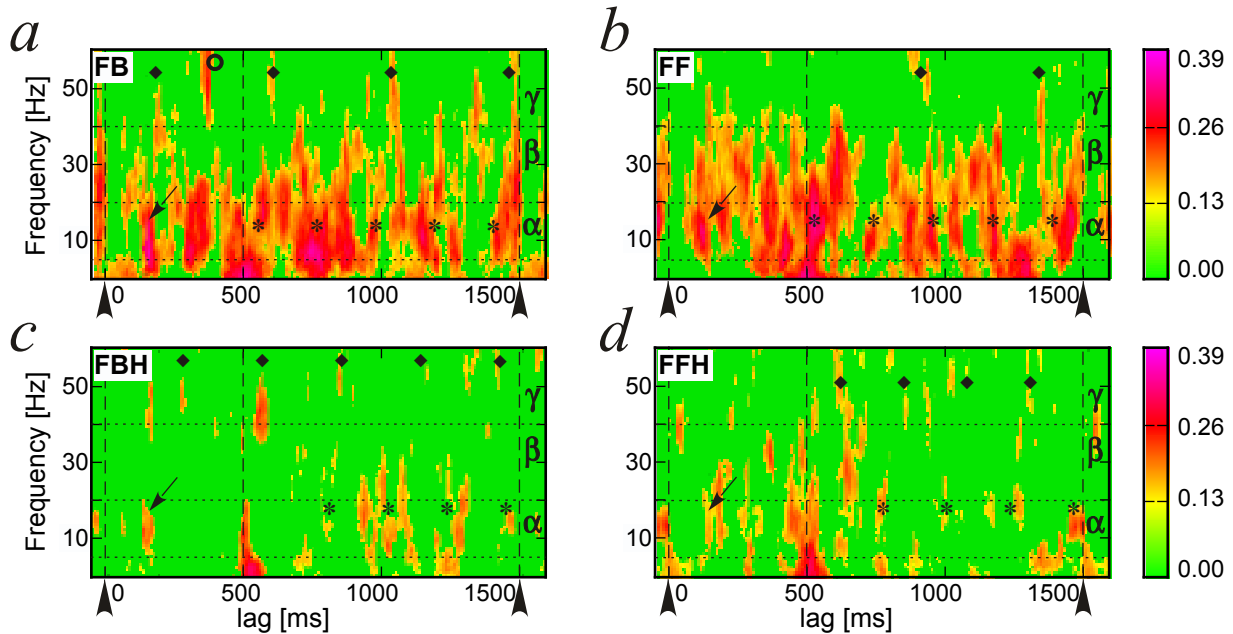


Figure 8: Cross-coherence maps between the Layer 1 and the Layer 2 of all circuits calculated between trials #128 and #228. The value of cross-coherence is color-coded according to the scale on the right, ranging between 0 and 0.39. Non-significant values are zeroed. The map is calculated using discrete Fourier Transform with a resolution of  $1/16$  Hz in frequency and  $6.25$  ms in time. The horizontal dotted lines correspond to frequency band boundaries. The big arrows indicate the stimulus onset and the vertical dashed lines at  $500$  and  $1500$  ms indicate the Inter-Stimulus Interval. A digital infinite impulse response filter for  $[1 - 55$  Hz] bandpass was applied before signal processing in order to reduce high frequency noise. Notice that during ISI peaks of cross-coherence tended to appear at regular intervals in the  $\alpha$ -band, marked by the asterisks, and in the  $\gamma$ -band, marked by black diamonds. The small arrows indicate cross-layer coherence at  $\sim 150$  ms in all circuits.

projections decreased the cross-layer coherence in the  $\beta$ -band (Fig. 8a,c vs. Fig. 8b,d). A very strong cross-layer coherence appeared  $\sim 400$  ms after the stimulus onset in the  $\gamma$ -band of FB circuits (Fig. 8a, empty circle).

During ISI we observed several interesting significant values of cross-layer coherence that emphasizes the effect of inter-modules connectivity on the pattern of activity of the entire circuit. The strongest cross-layer coherence in the  $\beta$ -band was observed for the pure feed-forward circuit (Fig. 8b). Both circuits without horizontal links were characterized by strong cross-layer coherence in the  $\alpha$ -band. More interestingly the significant peaks tended to appear at regular intervals in the  $\alpha$ -band (marked by the asterisks in Fig 8) of  $\sim 220$  ms in FB, and  $\sim 220$  ms in FF. Despite a much lesser degree of cross-layer coherence produced by the presence of the horizontal links this rhythmic pattern was also observed in FBH and FFH with intervals of  $\sim 220$  ms and  $\sim 230$  ms, respectively. This suggests the presence of a slow rhythm ( $\sim 4.4$  Hz) across the whole circuit independent of backward and horizontal projections.

During ISI the activity of the two layers was coherently correlated at regular intervals also in the  $\gamma$ -band (see the black diamond symbols in Fig. 8). In the absence of the horizontal links (Fig. 8a,b) the rhythm was  $2.3$  Hz for both FB and FF circuits. On the opposite, in the presence of the horizontal links the rhythm of the peaks in the  $\gamma$ -band for FBH and FFH was a bit faster,  $3.5$  and  $4.3$  Hz, respectively. We observe that in the presence of feedback projections (FB and FBH) the first peak of these rhythms tended to appear before the stimulus offset

(Fig. 8a,c).

#### 4. Discussion

This paper studies the information processing in hierarchically organized neural circuits by means of an evolutionary neural system simulator (Shaposhnyk et al., 2009). The encoding of connectivity properties in the ‘genome’ of the circuit allowed us to produce many different virtual subjects and study the common features of information processing shared by the whole sample of individuals. We have analyzed the activity of four basic circuits characterized by a sensory module receiving an external input carrying spatio-temporal information that projects to two hierarchically organized multilayered (in our case formed by two layers) streams of network modules characterized by optional recurrent (feedback) projections from the downstream to the upstream modules and optional intra-layer projections. Each network module undergoes a maturation process followed by an active unsupervised learning process determined by spike-timing-dependent plasticity rules meant to maintain active learning dynamics. These processes are simulated at the cellular level and the network activity is recorded by virtual electrodes located in each module. The recorded EChG signals are analyzed as ERPs triggered by the stimulus onset and by power density and cross-coherence analyses.

This is the first study that reports simulated EEG-like signals generated by large sample of evolvable networks of leaky integrate-and-fire neurons. Previous simulation studies of EEG



were based on population dynamics and neural masses (Freeman, 2005; Harrison et al., 2005; Cosandier-Rim el e et al., 2010; Babajani-Feremi and Soltanian-Zadeh, 2010; Goodfellow et al., 2011). These studies were generally aimed at determining the stability of network dynamics, the effect of noise and the emergence of synchronous activity in relation to epileptogenesis.

Our goal is limited to a computational study that partially reproduces the signals observed in biological experimental conditions. Though it represents an oversimplified approach to the complexity of real brain networks it offers the possibility to address issues raised by biological experiments such as the effect of inter-areal connectivity with the network activity. Experimental observation of synchronization of neural oscillations has been reported in association with the key process of binding of information processed in distributed brain regions (Singer, 1993; Womelsdorf et al., 2007). This information processing depends on the coupling between the thalamus and the cerebral cortex. The thalamocortical circuit is characterized by a complex pattern of feed-forward, feedback and inter-areal connections that are likely to be associated with its performance in feature selection (Villa and Tetko, 1995, 1997). The activity of this circuit is also characterized by several oscillatory patterns (Bal and McCormick, 1996; Contreras et al., 1996; Bazhenov et al., 2002; Timofeev I, 2005) that are associated with the EEG rhythms. Zero-lag synchronization between spatially separated cortical areas may represent a critical aspect of the binding process (Roelfsema et al., 1997) and has been investigated in relation to the thalamocortical circuit (Gollo et al., 2010) and to cortical feedback activity (Villa et al., 1999; Sheeba et al., 2008).

We showed evidence that all network of modules are able to process and maintain patterns of activity associated with the stimulus after its offset for hundreds of milliseconds. This finding is in agreement with the occurrence of preferred sequences of spikes, which are dependent on the stimulus presentation but not triggered by it, recorded in the single module simulations (Iglesias and Villa, 2010). We have shown that the offset of the stimulus is also the most significant event that triggers coherent activity in the low frequency range throughout the network of any circuit studied here. It could be interpreted according to standing waves theory. Low frequencies suggest that information processing is transmitted at long distances, thus involving large neural networks in processing stimulus-related activity. This is also in agreement with recent experimental findings in human experiments that revealed specific low frequency coherence patterns associated with processing type regardless of task contents and modality (Okuhata et al., 2009).

It is interesting to notice that the power spectrum density of the EChG recorded during the inter stimulus interval showed more energy in the  $\gamma$ -band for Layer 2 of the FBH circuit than in the same Layer of the other circuits. The FBH circuit, which is characterized by feedback and by horizontal projections, was also characterized by cross-layer coherence extending during ISI in the  $\gamma$ -frequency range. This result suggests that in the circuits with feedback projections the bursts of cross-layer coherent  $\gamma$ -activity are likely to be triggered by some process that started during the stimulus presentation and that is not affected by stimulus offset. Such stimulus-evoked transient asso-

ciations between neural networks that are not necessarily time-locked to a stimulus onset may be considered with respect to the propagation of correlated waveforms and neuronal avalanches recorded in organotypic cultures of cortex (Thiagarajan et al., 2010). A network exhibiting multiple partially synchronized modes strongly excited by a stimulus, with a wide range of flexible, adaptable, and complex behavior, has been modeled as the variance of the connection gain increases, inhibitory connections become more likely and global synchronization is shown to decrease (Gray and Robinson, 2009). This activity might be associated with a maintenance and control task integrated in the stimulus memorization process, as a form of working memory (Wolters and Raffone, 2008; Thiagarajan et al., 2010).

The effect of introducing connections between modules of the same layer provoked also an enhancement of the stimulus-locked onset excitation and offset inhibition in the ERPs of Layer 1, the layer receiving the input from the sensory module, irrespective of the feedback links. In Layer 2 the effect was more subtle and we could observe it better by the cross-coherence. The duration of evoked transients is likely to increase with the hierarchical depth of processing (David et al., 2005). However, we found late components after stimulus offset in both FF and FB circuits, which raises the possibility of alternative hypotheses than the simple dependency on backward connections to reflect a reentry of dynamics to hierarchically lower processing areas (David et al., 2005). The discrepancy with those results may be due to the differences with their modeling because neural masses are unlike to realistically account for the diversity of activity patterns that can emerge within the networks of spiking neurons that belong to a neural module. It is important to remember that the coherence value indicates a linear statistical association between time-series in a given frequency band (Bullock et al., 1995). The absence of linear statistical association between two processes does not mean the absence of any interaction. Higher-order frequency domain statistics like bicoherence and cross-bispectral analyses might be well suited to reveal interesting nonlinear interactions as suggested in a FBH-like network study (Perrig et al., 2010). The search for inter-module transient functional connectivity and its comparison with linear methods (Fingelkurts and Fingelkurts, 2010) is still limited by the understanding of the impact of different methodological choices on the outcome of the analysis (Bassett and Bullmore, 2009).

In conclusion, we have provided evidence that studies of networks of neural modules of spiking neurons can bring new insights to the understanding of neural generated signals like ERP and EEG. In the future we will extend our approach to larger networks of modules and nonlinear interactions will be investigated as a function of the main parameters of inter-modules connectivity. Different types of neuronal models will also be tested in order to determine the robustness of the key observations. It is also important to consider that our approach can be extended further to robotic applications where simple patterns of activity recorded by the EChG could be encoded into actua-

## References

- Babajani-Feremi, A., Soltanian-Zadeh, H., 2010. Multi-area neural mass modeling of eeg and meg signals. *Neuroimage* 52, 793–811.
- Bal, T., McCormick, D.A., 1996. What stops synchronized thalamocortical oscillations? *Neuron* 17, 297–308.
- Bassett, D.S., Bullmore, E.T., 2009. Human brain networks in health and disease. *Curr Opin Neurol* 22, 340–347.
- Bazhenov, M., Timofeev, I., Steriade, M., Sejnowski, T.J., 2002. Model of thalamocortical slow-wave sleep oscillations and transitions to activated states. *J Neurosci* 22, 8691–8704.
- Blackman, R.B., Tukey, J.W., 1959. The measurement of power spectra: From the Point of View of Communications Engineering. 190 pp., Dover Publications Inc., New York, N.Y., USA.
- Breakspear, M., Stam, C.J., 2005. Dynamics of a neural system with a multi-scale architecture. *Philos Trans R Soc Lond B Biol Sci* 360, 1051–1074.
- Bullock, T., McClune, M., Achimowicz, J., Iragui-Madoz, V.J., Duckrow, R.B., Spencer, S.S., 1995. EEG coherence has structure in the millimeter domain. *Contreras, D., Destexhe, A., Sejnowski, T.J., Steriade, M., 1996. Control of spatiotemporal coherence of a thalamic oscillation by corticothalamic feedback. Science* 274, 771–774.
- Cosandier-Rim el, D., Merlet, I., Bartolomei, F., Badier, J.M., Wendling, F., 2010. Computational modeling of epileptic activity: from cortical sources to EEG signals. *J Clin Neurophysiol* 27, 465–470.
- David, O., Harrison, L., Friston, K.J., 2005. Modelling event-related responses in the brain. *Neuroimage* 25, 756–770.
- Deco, G., Jirsa, V.K., Robinson, P.A., Breakspear, M., Friston, K., 2008. The dynamic brain: from spiking neurons to neural masses and cortical fields. *PLoS Comput Biol* 4.
- Delorme, A., Makeig, S., 2004. EEGLAB: an open source toolbox for analysis of single-trial EEG dynamics including independent component analysis. *J Neurosci Meth* 134, 9–21.
- Drover, J.D., Schiff, N.D., Victor, J.D., 2010. Dynamics of coupled thalamocortical modules. *J Comput Neurosci* 28, 605–616.
- Efron, B., 1979. Bootstrap methods: Another look at the jackknife. *The Annals of Statistics* 7, pp. 1–26.
- Fingelkurts, A.A., Fingelkurts, A.A., 2010. Short-term EEG spectral pattern as a single event in EEG phenomenology. *Open Neuroimag J* 4, 130–156.
- Freeman, W.J., 1975. *Mass Action in the Nervous System*. Academic Press, New York, NY, USA.
- Freeman, W.J., 2005. A field-theoretic approach to understanding scale-free neocortical dynamics. *Biol Cybern* 92, 350–359.
- Gollo, L.L., Mirasso, C., Villa, A.E., 2010. Dynamic control for synchronization of separated cortical areas through thalamic relay. *Neuroimage* 52, 947–955.
- Goodfellow, M., Schindler, K., Baier, G., 2011. Intermittent spike-wave dynamics in a heterogeneous, spatially extended neural mass model. *Neuroimage* 55, 920–932.
- beim Graben, P., Kurths, J., 2008. Simulating global properties of electroencephalograms with minimal random neural networks. *Neurocomputing* 71, 999 – 1007.
- Gray, R.T., Robinson, P.A., 2009. Stability and structural constraints of random brain networks with excitatory and inhibitory neural populations. *J Comput Neurosci* 27, 81–101.
- Harrison, L.M., David, O., Friston, K.J., 2005. Stochastic models of neuronal dynamics. *Philos Trans R Soc Lond B Biol Sci* 360, 1075–1091.
- Hill, S., Villa, A.E., 1997. Dynamic transitions in global network activity influenced by the balance of excitation and inhibition. *Network: computational neural networks* 8, 165–184.
- Hoaglin, D.C., Mosteller, F., Tukey, J.W. (Eds.), 2000. *Understanding robust and exploratory data analysis*. Wiley Classics Library, Wiley-Interscience, New York. Revised and updated reprint of the 1983 original.
- Hutchins, J.B., Barger, S.W., 1998. Why neurons die: cell death in the nervous system. *Anat Rec* 253, 79–90.
- Iglesias, J., Eriksson, J., Grize, F., Tomassini, M., Villa, A.E.P., 2005. Dynamics of pruning in simulated large-scale spiking neural networks. *BioSystems* 79, 11–20.
- Iglesias, J., Villa, A.E.P., 2007. Effect of stimulus-driven pruning on the detection of spatiotemporal patterns of activity in large neural networks. *BioSystems* 89, 287–293.
- Iglesias, J., Villa, A.E.P., 2008. Emergence of preferred firing sequences in large spiking neural networks during simulated neuronal development. *Int J Neural Syst* 18, 267–277.
- Iglesias, J., Villa, A.E.P., 2010. Recurrent spatiotemporal firing patterns in large spiking neural networks with ontogenetic and epigenetic processes. *J Physiol Paris* 104, 137–146.
- Innocenti, G.M., 1995. Exuberant development of connections, and its possible permissive role in cortical evolution. *Trends in Neurosciences* 18, 397–402.
- Knight, B.W., 2000. Dynamics of encoding in neuron populations: some general mathematical features. *Neural Comput* 12, 473–518.
- Langdon, W., 2010. 2-bit flip mutation elementary fitness landscapes, in: Auger, A., Shapiro, J.L., Whitley, L.D., Witt, C. (Eds.), *Theory of Evolutionary Algorithms*, Schloss Dagstuhl - Leibniz-Zentrum fuer Informatik, Germany, Dagstuhl, Germany. pp. 1–19.
- Ly, C., Ermentrout, G.B., 2009. Synchronization dynamics of two coupled neural oscillators receiving shared and unshared noisy stimuli. *J Comput Neurosci* 26, 425–443.
- Nunez, P.L., Srinivasan, R., 2006. *Electric Fields of the Brain*. Oxford University Press, New York, NY, USA.
- Okuhata, S.T., Okazaki, S., Maekawa, H., 2009. EEG coherence pattern during simultaneous and successive processing tasks. *Int J Psychophysiol* 72, 89–96.
- Perrig, S., Iglesias, J., Shaposhnyk, V., Chibirova, O., Dutoit, P., Cabessa, J., Espa-Cervena, K., Pelletier, L., Berger, F., Villa, A.E.P., 2010. Functional interactions in hierarchically organized neural networks studied with spatiotemporal firing patterns and phase-coupling frequencies. *Chin J Physiol* 53, 382–395.
- Rakic, P., Bourgeois, J., Eckenhoff, M.F., Zecevic, N., Goldman-Rakic, P.S., 1986. Concurrent overproduction of synapses in diverse regions of the primate cerebral cortex. *Science* 232, 232–235.
- Rennie, C.J., Robinson, P.A., Wright, J.J., 2002. Unified neurophysical model of EEG spectra and evoked potentials. *Biol Cybern* 86, 457–471.
- Roelfsema, P.R., Engel, A.K., K onig, P., Singer, W., 1997. Visuomotor integration is associated with zero time-lag synchronization among cortical areas. *Nature* 385, 157–161.
- Shaposhnyk, V., Dutoit, P., Contreras-L amus, V., Perrig, S., Villa, A., 2009. A framework for simulation and analysis of dynamically organized distributed neural networks. *Lect Notes Comput Sci* 5768, 277–286.
- Sheeba, J.H., Stefanovska, A., McClintock, P.V., 2008. Neuronal synchrony during anesthesia: a thalamocortical model. *Biophys J* 95, 2722–2727.
- Singer, W., 1993. Synchronization of cortical activity and its putative role in information processing and learning. *Ann Rev Physiol* 55, 349–374.
- Sotero, R.C., Trujillo-Barreto, N.J., Iturria-Medina, Y., Carbonell, F., Jimenez, J.C., 2007. Realistically coupled neural mass models can generate EEG rhythms. *Neural Comput* 19, 478–512.
- Thiagarajan, T.C., Lebedev, M.A., Nicoletis, M.A., Plenz, D., 2010. Coherence potentials: loss-less, all-or-none network events in the cortex. *PLoS Biol* 8.
- Timofeev I, B.M., 2005. Mechanisms and biological role of thalamocortical oscillations, in: Columbus, F. (Ed.), *Trends in chronobiology research*. Nova Science Publishers, Inc., pp. 1–47.
- Ursino, M., Cona, F., Zavaglia, M., 2010. The generation of rhythms within a cortical region: analysis of a neural mass model. *Neuroimage* 52, 1080–1094.
- Villa, A.E.P., Tetko, I.V., 1995. Spatio-temporal patterns of activity controlled by system parameters in a simulated thalamo-cortical neural network, in: Hermann, H. (Ed.), *Supercomputing in Brain Research: from tomography to neural networks*, World Scientific Publishing, Singapur. pp. 379–388.
- Villa, A.E.P., Tetko, I.V., 1997. Efficient partition of learning data sets for neural network training. *Neural Netw* 10, 1361–1374.
- Villa, A.E.P., Tetko, I.V., Dutoit, P., De Ribaupierre, Y., De Ribaupierre, F., 1999. Corticofugal modulation of functional connectivity within the auditory thalamus of rat. *J Neurosci. Meth.* 86, 161–178.
- Wolters, G., Raffone, A., 2008. Coherence and recurrency: maintenance, control and integration in working memory. *Cogn Process* 9, 1–17.
- Womelsdorf, T., Schoffelen, J.M., Oostenveld, R., Singer, W., Desimone, R., Engel, A.K., Fries, P., 2007. Modulation of neuronal interactions through neuronal synchronization. *Science* 316, 1609–1612.
- Wright, J.J., 1999. Simulation of EEG: dynamic changes in synaptic efficacy, cerebral rhythms, and dissipative and generative activity in cortex. *Biol Cybern* 81, 131–147.