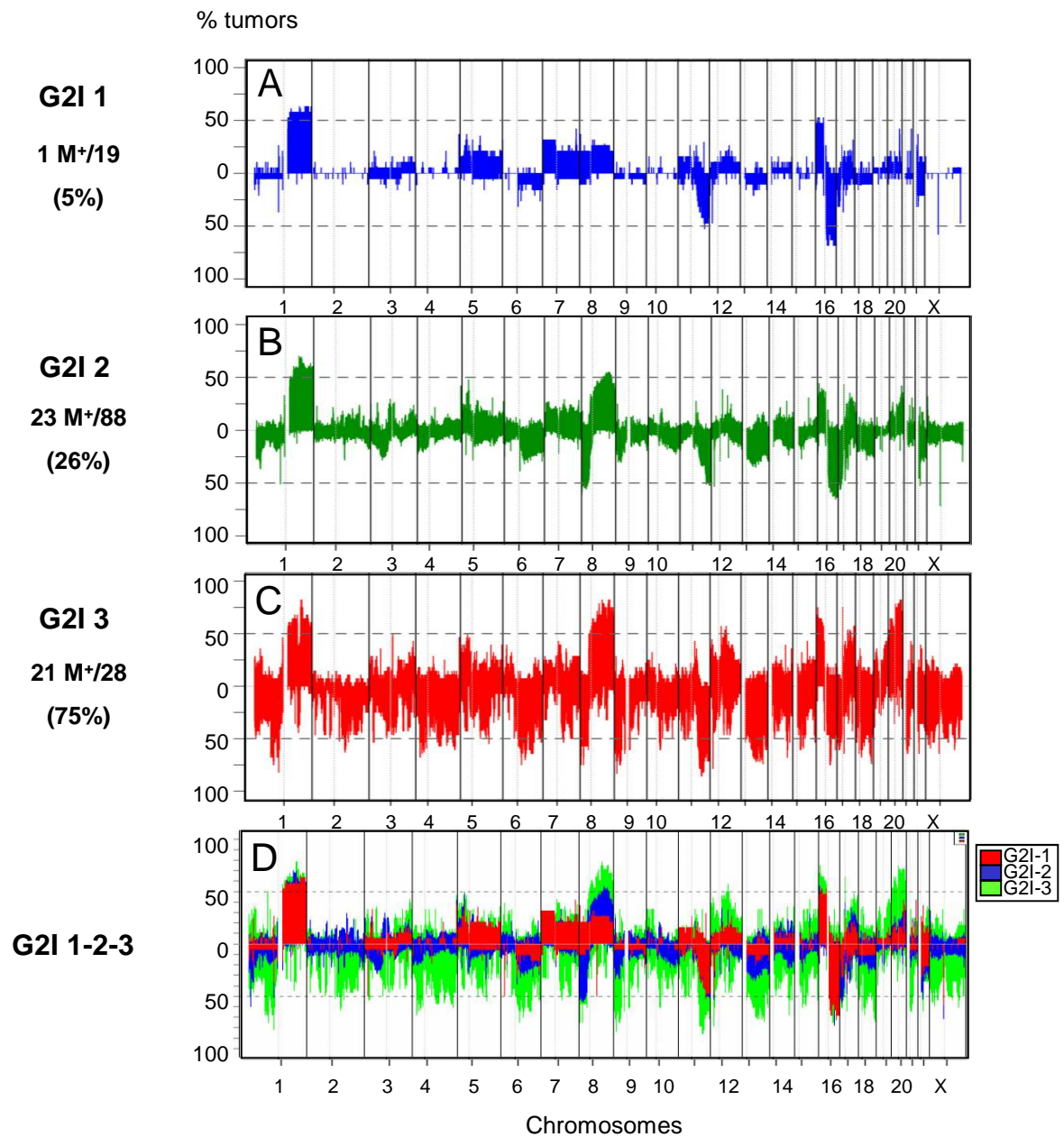


**Supplementary figure 1:** scatter plot of the 135 tumors according to the two items of the G2I showing the relatively high frequency of G2I-3 tumors without axillary lymph node involvement in comparison to the G2I-2 tumors (20/28 versus 43/88)

**Supplementary figure 2:** Frequency plot of copy number alterations in tumors belonging to the three classes of the G2I. Plot D shows the specificity of the numerous losses of material observed with a high frequency in G2I-3 tumors (in green in this plot).



**Supplementary figure 3:** supervised hierarchical clustering showing the differential expression of 300 probe sets (listed in sup. table 9) between G2I-3 and G2I-2 tumors.

MR, black: metastatic relapse, white: no relapse; HR, black: steroid hormonal receptors positive, white: negative; her2, black: Immunohistochemistry Her2 3+, white: 1+ and 2+; p53, black: TP53 mutation or immunohistochemistry over expression, white: wild type; NPI, Nottingham Prognostic Index, red: NPI-1 or excellent, blue: NPI-2 or good, green: NPI-3 or moderate, orange: NPI-4 or poor prognostic; G2I: Genomic instability index, red: G2I-1, blue: G2I-2, green: G2I-3 class of tumors.

