

Destructive arthritis in a patient with chikungunya virus infection with persistent specific IgM antibodies.

Denis Malvy, Khaled Ezzedine, Maria Mamani-Matsuda, Brigitte Autran, Hugues Tolou, Marie-Catherine Receveur, Thierry Pistone, Jérôme Rambert, Daniel Moynet, Djavad Mossalayi

► **To cite this version:**

Denis Malvy, Khaled Ezzedine, Maria Mamani-Matsuda, Brigitte Autran, Hugues Tolou, et al.. Destructive arthritis in a patient with chikungunya virus infection with persistent specific IgM antibodies.. BMC Infectious Diseases, BioMed Central, 2009, 9 (1), pp.200. <10.1186/1471-2334-9-200>. <inserm-00668479>

HAL Id: inserm-00668479

<http://www.hal.inserm.fr/inserm-00668479>

Submitted on 9 Feb 2012

HAL is a multi-disciplinary open access archive for the deposit and dissemination of scientific research documents, whether they are published or not. The documents may come from teaching and research institutions in France or abroad, or from public or private research centers.

L'archive ouverte pluridisciplinaire **HAL**, est destinée au dépôt et à la diffusion de documents scientifiques de niveau recherche, publiés ou non, émanant des établissements d'enseignement et de recherche français ou étrangers, des laboratoires publics ou privés.

Case report

Open Access

Destructive arthritis in a patient with chikungunya virus infection with persistent specific IgM antibodies

Denis Malvy^{†1,2,3}, Khaled Ezzedine^{*†1,2,3}, Maria Mamani-Matsuda³, Brigitte Autran⁴, Hugues Tolou⁵, Marie-Catherine Receveur^{1,2}, Thierry Pistone^{1,2}, Jérôme Rambert³, Daniel Moynet³ and Djavad Mossalayi^{1,2}

Address: ¹Travel Clinics and Tropical Disease Unit, Department of Internal Medicine, Infectious Diseases and Tropical Medicine, University Hospital Center, Bordeaux, F-33075 France, ²Centre René Labusquière (Tropical Medicine and Hygiene Branch), University Bordeaux, Bordeaux, F-33076, France, ³PPF Parasitology, University Bordeaux 2, Bordeaux, F-33076, France, ⁴Laboratory of Immunity and Infection, UMR-S INSERM 945, University Pierre and Marie Curie, Hôpital Pitié-Salpêtrière, 83, Boulevard de l'hôpital, Paris F-75651, France and ⁵Laboratory of Virology, French Armed Forces Institute of Tropical Medicine (IMTSSA), Allée du Médecin colonel Eugène Jamot, Le Pharo, BP 60109, 13262 Marseille Cedex 07, France

Email: Denis Malvy - denis.malvy@chu-bordeaux.fr; Khaled Ezzedine* - khaled.ezzedine@chu-bordeaux.fr; Maria Mamani-Matsuda - maria.mamani-matsuda@u-bordeaux2.fr; Brigitte Autran - brigitte.autran@psl.ap-hop-paris.fr; Hugues Tolou - tolouh@imtssa.fr; Marie-Catherine Receveur - marie-catherine.receveur@chu-bordeaux.fr; Thierry Pistone - thierry.pistone@chu-bordeaux.fr; Jérôme Rambert - jerome.rambert@u-bordeaux2.fr; Daniel Moynet - daniel.moynet@u-bordeaux2.fr; Djavad Mossalayi - djavad.mossalayi@u-bordeaux2.fr

* Corresponding author †Equal contributors

Published: 10 December 2009

Received: 21 June 2009

BMC Infectious Diseases 2009, 9:200 doi:10.1186/1471-2334-9-200

Accepted: 10 December 2009

This article is available from: <http://www.biomedcentral.com/1471-2334/9/200>

© 2009 Malvy et al; licensee BioMed Central Ltd.

This is an Open Access article distributed under the terms of the Creative Commons Attribution License (<http://creativecommons.org/licenses/by/2.0>), which permits unrestricted use, distribution, and reproduction in any medium, provided the original work is properly cited.

Abstract

Background: Chikungunya fever is an emerging arboviral disease characterized by an algoperuption syndrome, inflammatory polyarthralgias, or tenosynovitis that can last for months to years. Up to now, the pathophysiology of the chronic stage is poorly understood.

Case presentation: We report the first case of CHIKV infection with chronic associated rheumatism in a patient who developed progressive erosive arthritis with expression of inflammatory mediators and persistence of specific IgM antibodies over 24 months following infection.

Conclusions: Understanding the specific features of chikungunya virus as well as how the virus interacts with its host are essential for the prevention, treatment or cure of chikungunya disease.

Background

Chikungunya virus (CHIKV) is an enveloped positive-strand RNA alphavirus which can infect human epithelial and endothelial cells, fibroblasts or macrophages [1,2]. A CHIKV epidemic recently occurred on islands of the Indian Ocean in 2005 [3-5]. CHIKV infection may cause an algoperuption syndrome with disabling joint pain and

recurrent rheumatic manifestations [6-8]. Until now, it has been assumed that complete recovery occurs, even when symptoms are long lasting. Remarkably, despite the severity and duration of arthritis, articular destruction has been reported very rarely [9]. We report the case of a patient with CHIKV infection presenting with severe chronic rheumatism accompanied by progressive destruc-

tive arthritis and dysregulated expression of inflammatory mediators.

Case presentation

In November 2005, a 60-year-old French man living in La Réunion experienced an acute influenza-like illness with diffuse arthralgia affecting bilaterally the distal interphalangeal joints of the fingers and the toes with hand tenosynovitis. His past medical history was unremarkable with no family history of inflammatory rheumatism.

Serology demonstrated the presence of anti-CHIKV IgM and confirmed the diagnosis of CHIKV infection. During the following months, the patient had persisting inflammatory arthralgia and joint stiffness which were not improved by symptomatic treatment. One year later, he developed refractory tenosynovitis in the wrists.

On February 15, 2007, the patient returned to France and consulted in our department. He complained of persistent symmetrical inflammatory arthritis of the wrists with fixed oedema of the two hands predominating on the right. Hand synovitis of the extensors and the flexors of wrists and fingers were noted. Lymphocyte immunophenotyping showed an increased CD4 T-cell count at $1,18 \times 10^9/L$ (63.5%) and an activated CD45/CD3 (-) T-cell count at $0.209 \times 10^9/L$ (11.3%), and CD45/CD3 (+) at $0,119 \times 10^9/L$ (6.4%). Serum immunoglobulin was normal, as were the C3 and C4 complement fractions. No markers of autoimmunity were found, notably anti-citrullin peptide antibodies, antinuclear antibodies or cryoglobulinemia. The HLA B27 gene was positive and HLA system class II genotyping revealed an HLA-DRB1.03.11 genotype.

At the time of the consultation, serologic status for CHIKV antibodies was reevaluated using IgM-capture and an IgG-capture enzyme-linked immunoabsorbent assay with inactivated cell-culture-ground chikungunya virus and mouse anti-chikungunya hyperimmune ascitic fluid (Institut Pasteur, Lyon, France). Persistent specific anti-CHIKV IgM was detected in this late stage serum sample, collected 18 months after the infection, with optical density (OD) values of 1.47 for IgG and 0.81 for IgM. Testing for CHIKV RNA was negative [10]. Radiography of the hands and wrists showed a subchondral defect of the 2nd and 3rd right proximal interphalangeal finger joints as well as of the 3rd, 4th and 5th left distal interphalangeal joints. Magnetic resonance imaging (MRI) of the hands and wrists revealed marked bilateral periosteal inflammation and oedematous carpal (Fig 1A and 1B), with carpal synovitis (1C) and bone destruction in the left hand (1D) accompanied by intra-articular swelling (1D). Bone scintigraphy revealed diffuse inflammation of several joints, prominent in the right wrist (3rd metacarpo-phalangeal

joint) (Fig 1E) and the left ankle (1F), as well as evolutive enthesopathy of the left calcaneum. Methotrexate (MTX) was initiated at the dose of 17.5 mg/week and four months later, dramatic improvement was observed in both the number and state of swollen and tender joints and in tendon involvement. At this time, MRI of the hands, wrists and feet showed reduced progression of erosion and a decrease in radiographic inflammation and oedematous damage compared to before treatment. Clinical and radiological improvement was maintained over 15 months. At this end-point, CHIKV antibody serology showed persistence of both specific IgM and IgG, with OD values of 0.60 and 0.32, respectively.

Immunological evaluation

T cell function was assessed using proliferation assays and ELISPOT quantification of interferon- γ (IFN- γ) production by T cells. No proliferative response or IFN- γ production could be detected in response to CHIKV antigens derived from an in-house preparation of β -propiolactone-inactivated virus (French Armed Forces Institute of Tropical Medicine, Marseilles, France). T cell viability was ascertained by concurrent detection in the same assays of T cells responding to candidin and herpes simplex virus-1 antigens tested as controls.

Peripheral blood lymphocytes (PBL) from the patient and from three healthy control individuals were isolated and analysed at a transcriptomic level using real-time reverse transcriptase-polymerase chain reaction (PCR) to detect mRNA species encoding inflammatory mediators (RT² Profiler[™] PCR Array Human Inflammatory Cytokine and Receptors, SuperArray, Frederick, USA). Each PCR used the same quantity of total RNA from each cell culture and the absence of a signal after 35 PCR cycles was taken as the threshold for the mRNA not being detectable. These PCR analyses were completed by measurement of cytokine levels in the serum and in the 48 h PBL-derived supernatant. These analyses were performed on samples obtained before treatment initiation and at the four-month follow-up.

At baseline, characteristic up regulation of mRNAs encoding pro-inflammatory mediators, including TNF- α , LTA, CRP, IL-1A and IL-17C was observed in PBL from the patient (Table 1). In addition, these cells expressed high levels of mRNAs encoding chemokines (IL-8, CCL1, CCL7, CCL8, CCL16, CCL24, CCL26, and CXCL5) or their receptors (XCR1, CCR2, CCR6, CCR8, and CCR9). In contrast, the expression of genes encoding CD40 Ligand (CD40L), IFN- α , IL-22, CXCL2 and CXCL14 was not detected. High levels of the pro-inflammatory cytokines IL-1 β , IL-6, IL-8 and IL-10 were detected in the supernatant following 48 h incubation of PBLs in culture medium alone, while comparatively low levels of IFN- γ and TNF- α

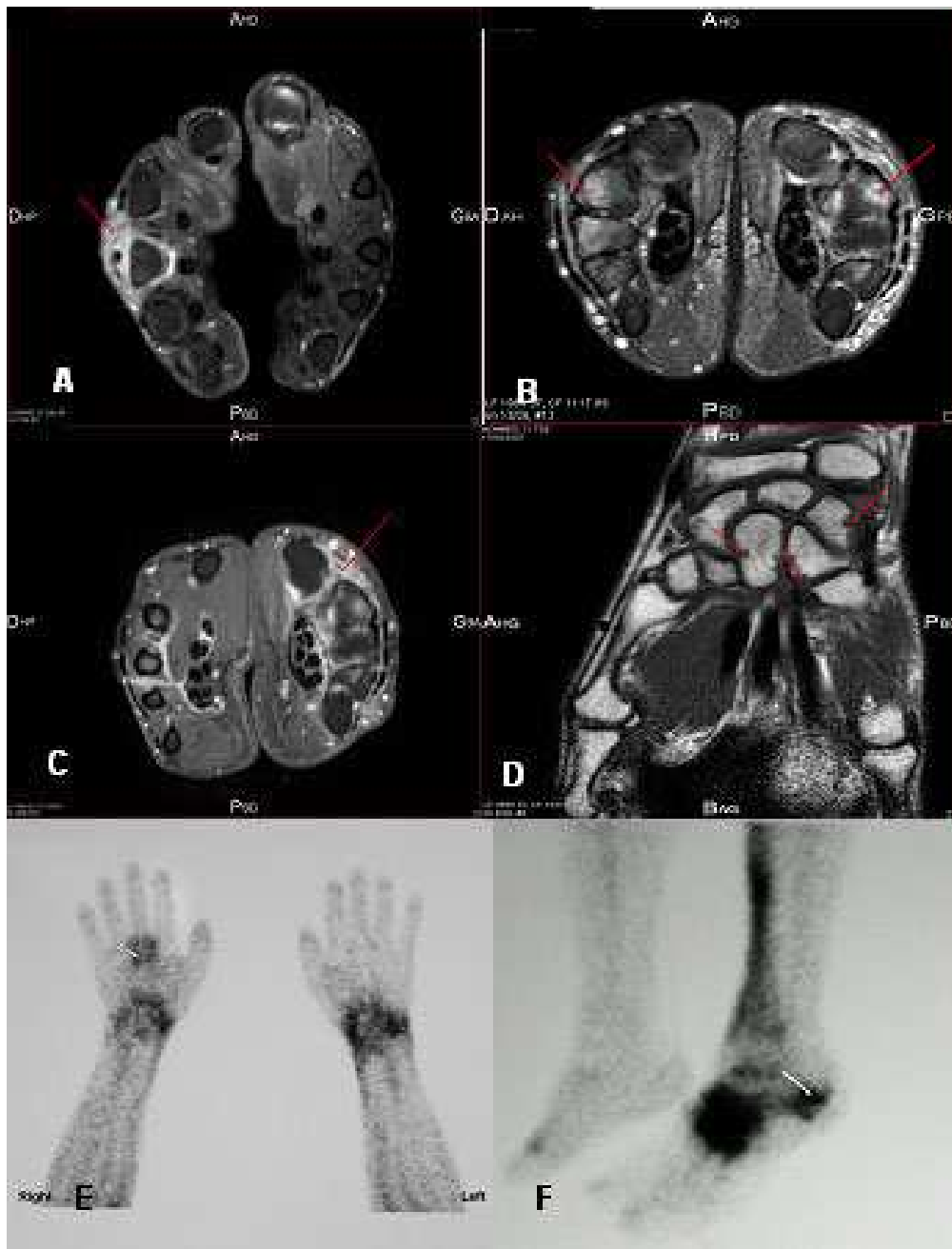


Figure 1

Magnetic resonance imaging (MRI) and bone scintigraphy of the hands and wrists of a 60-year-old man with chikungunya virus infection revealing. A. Arthritis of the 3rd metacarpophalangeal joint of the right hand with extensor tenosynovitis associated with intra-articular swelling (red arrow on axial section, time-resolved contrast-enhanced T1-weighted sequence after Gadolinium injection with fat suppression) B. Bilateral periosteum inflammation and oedematous carpalis with synovitis predominating on the left hand (arrow on axial section, time-resolved-enhanced T2-weighted sequence with fat suppression) C. Asymmetric inflammatory carpalis with multiple synovitis of flexors of the left wrist (red arrows on axial section, time-resolved contrast-enhanced T1-weighted sequence after Gadolinium injection with fat suppression) D. Bone destruction on the left hand (red arrows on coronal section, time-resolved contrast-enhanced T1-weighted sequence with fat suppression) E. Bone scintigraphy of the wrists and hands showing an intense focus of technetium 99 m-labeled methylene diphosphonate tracer uptake, particularly in the right metacarpophalangeal wrist. F. Bone scintigraphy of the left foot showing an intense focus of technetium 99 m-labeled methylene diphosphonate tracer uptake, particularly in the left ankle.

Table 1: Gene expression profile in a patient with chikungunya virus infection before and four months following methotrexate (MTX) treatment.

Gene Name	Unigene ID	Description	Before MTX Fold/Control	After MTX Fold/Control	Before/after Fold ††
<i>Inflammatory mediators</i>					
TNF-α	241570	Tumor necrosis factor- α (TNFsuperfamily, member 2)	9†	-15	-135
LTA	36	Lymphotoxin alpha (TNF superfamily, member 1)	1	-10	-13
CRP	76452	C-reactive protein, pentraxin-related	12	-3	-33
IL-1A	1722	Interleukin 1, alpha	2	-5	-9
IL-1F5	516301	Interleukin 1 family, member 5 (delta)	84	1	-90
IL-1F6	278910	Interleukin 1 family, member 6 (epsilon)	2	-9	-20
IL-1F7	166371	Interleukin 1 family, member 7 (zeta)	4	-3	-11
IL-1F8	278909	Interleukin 1 family, member 8 (eta)	7	-4	-28
IL-1F9	211238	Interleukin 1 family, member 9	8	-2	-20
IL-1RN	81134	Interleukin 1 receptor antagonist	49	-3	-167
IL-9	960	Interleukin 9	3	-6	-20
IL-9R	406228	Interleukin 9 receptor	5	-3	-15
IL-17C	278911	Interleukin 17C	10	1	-10
SPP1	313	Secreted phosphoprotein 1 (osteopontin, bone sialoprotein 1, early T-lymphocyte activation 1)	7	-2	-15
C3	529053	Complement component 3	12.25	19	1
<i>Th2-related factors</i>					
IL-13	845	Interleukin 13	5	-11	-55
IL-22	287369	Interleukin 22	OFF	OFF	--
CD40L	592244	CD40 ligand (TNF superfamily, hyper-IgM syndrome)	OFF	OFF	--
<i>Inflammatory chemokines and their receptors</i>					
IFN-α	211575	Interferon- α 2	OFF	OFF	--

Table 1: Gene expression profile in a patient with chikungunya virus infection before and four months following methotrexate (MTX) treatment. (Continued)

IL-8	624	Interleukin 8	5	1	-5
XCRI	248116	Chemokine (C motif) receptor 1	34	-2	-62
CCLI	72918	Chemokine (C-C motif) ligand 1	4	-31	-109
CCL7	251526	Chemokine (C-C motif) ligand 7	3	-14	-40
CCL8	271387	Chemokine (C-C motif) ligand 8	2	-46	-80
CCL16	10458	Chemokine (C-C motif) ligand 16	6	-3	-22
CCL24	247838	Chemokine (C-C motif) ligand 24	76	-3	-190
CCL26	131342	Chemokine (C-C motif) ligand 26	7	-2	-15
CCR2	644637	Chemokine (C-C motif) receptor 2	13	89	7
CCR6	46468	Chemokine (C-C motif) receptor 6	4	-5	-17
CCR8	113222	Chemokine (C-C motif) receptor 8	8	-2	-19
CCR9	225946	Chemokine (C-C motif) receptor 9	5	-3	-15
CXCL2	590921	Chemokine (C-X-C motif) ligand 2	OFF	2	ON
CXCL5	89714	Chemokine (C-X-C motif) ligand 5	27	4	-7
CXCL14	483444	Chemokine (C-X-C motif) ligand 14	OFF	1	ON

Patient had persistent specific IgM antibodies and erosive arthritis for two years before treatment.

† gene expression in patient peripheral blood mononuclear cells compared to those observed in cells from three healthy controls using real-time RT-PCR. Results shown as fold expression compared to control values. Inflammatory arrays were performed using RT2 Profiler PCR Array System (Ref: APHS-011B, SuperArray, Frederick, USA, <http://www.superarray.com>)

†† Comparison of gene expression before MTX treatment and following 4 months therapy

were found. On the contrary, IFN- α , IL-4 or IL-5 were not detected in cell supernatant (Table 2).

Four months following initiation of treatment, the expression of most of the above mRNAs was attenuated, and expression of CD40L, IFN- α and IL-22 remained undetectable. At this time, cytokine levels measured in the cell culture supernatant were markedly decreased and surface CD40L expression on peripheral blood cells could not be detected (data not shown).

Conclusions

Chikungunya virus infection is usually a self-limiting disease characterized by arthralgia with late peripheral joint pain in the smaller joints [11,12]. A sole case of late articular destruction after decades of post CHIKV-chronic rheumatism has been reported with a questionable relationship to the CHIKV infection [9]. Our case is remarkable for the clearly erosive arthritis pattern accompanied

with enthesopathies, which developed within less than two years of the index CHIKV infection [13].

The patient was positive for HLA B27 antigen although no clinical rheumatologic manifestations had been noted before the CHIKV infection. For this reason, we can conclude that he developed a form of spondylarthropathy. Concerning the acute phase, recent findings suggested that both classical and severe symptoms of chikungunya disease closely reflect CHIKV tissue tropism [14], with fibroblasts being the primary targets, as they are for other alphaviruses [1,15]. The molecular basis of this tropism may combine specific interactions between virus and host cells and tissues, and an intrinsic lower ability of this cell type to control CHIKV infection [8,14].

The pathogenesis of persistent arthritis remains unclear although persistent infection of synovial macrophages has been documented for other alphaviruses [16,17]. Moreo-

Table 2: Cytokine profiles from patient peripheral blood mononuclear cell supernatants before and four months following methotrexate (MTX) treatment.

Cytokine	pg/ml [†]		
	Healthy controls	Patient cells ^{††}	
		Before MTX	After MTX
IFN- γ	0-10	13	<10
IL-1 β	0-10	1 100	2
IL-6	0-35	9 482	864
IL-8	150-2000	1 4795	1094
IL-10	0-10	425	4
TNF- α	0-60	92	<10

[†] Cytokine levels in supernatants from cells incubated 48 h in medium alone and quantified using FlowCytomix Human Th1/Th2 Kit as recommended (Bender Medsystems, Vienna, Austria, <http://www.bendermedsystems.com>).

^{††} No cytokine was detected in serum. IFN- α , IL-2, IL-4, IL-5 and IL-12 were not detected in these samples.

ver, factors secreted by infected macrophages seem to play a pivotal role in joint inflammation [18]. To date, the presence of CHIKV RNA in joints during the acute phase of infection has only been demonstrated in animal models [14,19]. CHIKV RNA has never been detected in joint tissues during the late phase, although it has been found in human muscle satellite cells three months after infection [2]. Taken together with reports of the presence of long lasting IgM anti-CHIKV antibodies [20], these findings could indicate the persistence of CHIKV in certain host tissues or cells. However, there is no evidence that viral persistence is necessary to sustain chronic joint pathology after the infection. In our case, an antigen-specific immunopathology may underlie the development of chronic joint disease due to the presentation of specific autologous or microbial arthritogenic peptides [21]. This would be consistent with the notion of an infectious trigger for immune activation derived from molecular mimicry which has been postulated as a potential pathogenic mechanism in autoimmunity [22-24].

High levels of pro-inflammatory cytokines IL-1, IL-6 and IL-8 were detected in cell supernatants from the patient's lymphocytes and elevated expression of genes encoding a variety of cytokines and chemokines known to be implicated in the pathogenesis of arthritis were also observed [25,26]. In contrast, IFN- α , IL-4 and IL-5 were not detected in cell supernatants whereas IL-10 was increased. Of interest, the lymphocytes failed to express genes encoding IFN- α , IL-22 and CD40L, which are required for B cell differentiation, optimal immunoglobulin isotype switching and antiviral activity. Although the persistence of spe-

cific IgM antibodies has been documented after CHIKV infections [20], an association between these antibodies and disease severity has not been established. It is possible that antibody persistence may be determined by the persistence of virus in host tissues since, in acute arboviral infections, IgM are generally no longer detectable after 6-12 months. Unfortunately, in our case, it was not possible to perform RT-PCR for detection of CHIKV in synovial fluid or tissue

Viruses have evolved a number of mechanisms for suppressing host immune responses. In particular, viral proteins may suppress the retinoic acid-inducible gene 1-like helicase and Toll-like receptor pathways important for the expression of type 1-IFNs, such as IFN- α isoforms, which play a crucial role in eliminating viral infections [14,27-29]. Immunoglobulin class switching from IgM to IgG and IgA is central to immunity against viruses and requires the activation of B-cells by T-cells via cytokine interactions with CD154/CD40L. Mutations in the CD40L gene have been observed in cases of inherited hyper-IgM X-linked immunodeficiencies [27]. In this context, CHIKV may be able to evade T-cell dependent IgG and IgA responses by attenuating CD40L gene expression. Such a mechanism has been postulated previously to explain hyper IgM syndrome associated with various viral infections [30-32].

We report here a case of CHIKV infection with joint and bone erosion and persistent specific IgM nearly two years following infection. Transcriptomic and protein analysis revealed individual genes which could be implicated in the pathogenesis of chronic arthritis; these genes have not been associated previously with alphavirus-induced arthritis.

Consent

The patient has provided written consent to the use of his history for publication

Competing interests

The authors declare that they have no competing interests.

Authors' contributions

Dma took care of the patient. Dma and KE drafted the manuscript. BA and HT performed immunoglobulin assays. MMM, DMoy, DMA, JR and DMos performed the immunological analyses and evaluation. All authors reviewed the manuscript, contributed to its finalisation and approved the submitted version.

References

1. Sourisseau M, Schilte C, Casartelli N, Trouillet C, Guivel-Benhassine F, et al.: **Characterisation of reemerging Chikungunya virus.** *PLoS Pathog* 2007, **3**:e89.
2. Ozden S, Huerre M, Riviere JP, Coffey LL, Afonso PV, Mouly V, et al.: **Human muscle satellite cells as targets of Chikungunya virus.** *PLoS ONE* 2007, **6**:e527.

3. Mason PJ, Haddow AJ: **An epidemic of virus disease in southern province, Tanganyika territory in 53; an additional note on chikungunya virus isolations and serum antibodies.** *Trans R Soc Trop Med Hyg* 1952, **51**:238-40.
4. Enserink M: **Infectious diseases. Massive outbreak draws fresh attention to little known virus.** *Science* 2006, **311**:1085.
5. Gratz NG: **Emerging and resurging vector-borne diseases.** *Ann Rev Entomol* 1999, **44**:51-75.
6. Sissoko D, Moendandze A, Malvy D, Giry C, Ezzedine K, Solet J-L, Pierre V: **Seroprevalence and risk factors of chikungunya virus infection in Mayotte, Indian Ocean, 2005-2006: a population-based survey.** *PLoS ONE* 2008, **3**:e3066.
7. Sissoko D, Malvy D, Ezzedine K, Renault P, Moscetti F, Ledrans M, Pierre V: **Post-Epidemic Chikungunya Disease on Reunion Island: Course of Rheumatic Manifestations and Associated Factors over a 15-Month Period.** *PLoS Neglect Trop Dis* 2009, **3**:e389.
8. Lokireddy S, Vemula S, Vadde R: **Connective tissue metabolism in Chikungunya patients.** *Viral J* 2008, **5**:31.
9. Brighton SV, Simson IW: **A destructive arthropathy following chikungunya virus arthritis - a possible association.** *Clin Rheumatol* 1984, **3**:253-8.
10. Pastorino B, Bessaud M, Grandadam M, Murri S, Tolou HJ, Peyrefitte CN: **Development of a TaqMan RT-PCR assay without RNA extraction step for the detection and quantification of African chikungunya viruses.** *J Virol Methods* 2005, **124**:65-71.
11. Fourie ED, Morrison JG: **Rheumatoid arthritic syndrome after chikungunya fever.** *S Afr Med J* 1979, **56**:130-2.
12. Kennedy AC, Fleming J, Solomon L: **Chikungunya viral arthropathy: a clinical description.** *J Rheumatol* 1980, **7**:231-6.
13. Simon F, Parola P, Grandadam M, Fourcade S, Oliver M, Brouqui P, Hance P, Kraemer P, Ali Mohamed A, de Lamballerie X, Charrel R, Tolou H: **Chikungunya infection. An emerging rheumatism among travellers returned from the Indian Ocean Islands.** *Medicine* 2007, **86**:123-37.
14. Couderc T, Chrétien F, Schilte C, Disson O, Madly B, Benhassine-Guivel F, Touret Y, Barau G, Cayet N, Schuffenecker I, Desprès P, Arenzana-Seisdedos F, Michault A, Albert ML, Lecuit M: **A mouse model for chikungunya: young age and inefficient type-I interferon signaling are risk factors for severe disease.** *PLoS Pathog* 2008, **4**:e29.
15. Ryman KD, Klimstra WB, Nguyen KB, Biron CA, Johnston RE: **Alpha/beta interferon protects adult mice from fatal Sindbis virus infection and is an important determinant of cell and tissue tropism.** *J Virol* 2000, **74**:3066-78.
16. Suhrbier A, La Linn M: **Clinical and pathologic aspects of arthritis due to Ross River and other alphaviruses.** *Curr Opin Rheumatol* 2004, **16**:374-9.
17. Morrisson TE, Whitmore AC, Shabman RS, Lidbury BA, Mahalingam S, Heise MT: **Characterization of Ross River virus tropism and virus-induced inflammation in a mouse model of viral arthritis and myositis.** *J Virol* 2006, **80**:737-49.
18. Lidbury BA, Rulli NE, Suhrbier A, Smith PN, McColl SR, Cunningham AL, Tarkowski A, van Rooijen N, Fraser RJ, Mahalingam S: **Macrophage-derived proinflammatory factors contribute to the development of arthritis and myositis after infection with an arthrogenic alphavirus.** *J Infect Dis* 2008, **197**:1585-93.
19. Grivard P, Le Roux K, Laurent P, Fianu A, Perrau J, Gigan J, Hoarau G, Grondin N, Staikowsky F, Favier F, Michault A: **Molecular and serological diagnosis of Chikungunya virus infection.** *Pathol Biol (Paris)* 2007, **55**:490-4.
20. Borgherini G, Poubreau P, Jossaume A, Goux A, Cotte L, Michault A, Arvin-Berod C, Paganin F: **Persistent arthralgia associated with Chikungunya virus: a study of 88 adults patients on Reunion Island.** *Clin Infect Dis* 2008, **47**:469-79.
21. Khan MA, Matthieu A, Sorrentino R, Akkoc N: **The pathogenetic role of HLA-B27 and its subtypes.** *Autoimmunity Rev* 2007, **6**:183-9.
22. Cohen A, Schoenfeld Y: **The viral autoimmunity relationship.** *Viral Immunol* 1995, **8**:1-9.
23. Schoenfeld Y: **Common infections, idiotypic dysregulation, autoantibodies spread and induction of autoimmune diseases.** *J Autoimmun* 1996, **9**:235-9.
24. Fiorillo MT, Ruckert C, Huhsmeyer M, Sorrentino R, Saenger W, Ziegler A, Uchanska-Ziegler B: **Allele-dependant similarity between viral and self-peptide presentation by HLA-B27 subtypes.** *J Biol Chem* 2005, **280**:2962-71.
25. Rot A, von Andrian UH: **Chemokines in innate and adaptive host defense: basic chemokines grammar for immune cells.** *Annu Rev Immunol* 2004, **22**:891-928.
26. Dinarello CA: **Biologic basis for interleukin-1 in disease.** *Blood* 1996, **87**:2095-147.
27. Takeuchi O, Akira S: **Recognition of viruses by innate immunity.** *Immunol Rev* 2007, **220**:214-24.
28. Honda K, Takaoda A, Taniguchi T: **Type I interferon [corrected] gene induction by the interferon regulatory factor family of transcription factors.** *Immunity* 2006, **25**:349-60.
29. Stetson DB, Medzhitov R: **Type I interferons in host defense.** *Immunity* 2006, **25**:373-81.
30. Lin SC, Shyur SD, Ma YC, Huang LH, Lee WL: **Hyper-IgM1 syndrome with interstitial pneumonia and diarrhoea caused by coxsackie virus B4 in a 3-month-old infant.** *Ann Allergy Asthma Immunol* 2005, **95**:93-7.
31. Qiao X, He B, Shin A, Knowles DN, Chadburn A, Cerruti A: **Human immunodeficiency virus 1 Nef suppresses CD40-dependant immunoglobulin class switching in bystander B-cells.** *Nat Immunol* 2006, **7**:302-10.
32. Sitati E, McCandless EE, Klein RS, Diamond MS: **CD40-ligand interactions promote trafficking of CD8+ T-cells into the brain and protection against West Nile encephalitis.** *J Virol* 2007, **81**:9801-11.

Pre-publication history

The pre-publication history for this paper can be accessed here:

<http://www.biomedcentral.com/1471-2334/9/200/prepub>

Publish with **BioMed Central** and every scientist can read your work free of charge

"BioMed Central will be the most significant development for disseminating the results of biomedical research in our lifetime."

Sir Paul Nurse, Cancer Research UK

Your research papers will be:

- available free of charge to the entire biomedical community
- peer reviewed and published immediately upon acceptance
- cited in PubMed and archived on PubMed Central
- yours — you keep the copyright

Submit your manuscript here:
http://www.biomedcentral.com/info/publishing_adv.asp

