

## **Age-related changes in tricuspid inflow: comparison between phase contrast MR imaging and Doppler echocardiography**

Stéphanie Clement-Guinaudeau, Emilie Bollache, Muriel Lefort, Magalie Ladouceur, Ludivine Perdrix, Alban Redheuil, Nadja Kachenoura, Elie Mousseaux

► **To cite this version:**

Stéphanie Clement-Guinaudeau, Emilie Bollache, Muriel Lefort, Magalie Ladouceur, Ludivine Perdrix, et al.. Age-related changes in tricuspid inflow: comparison between phase contrast MR imaging and Doppler echocardiography. 2011 SCMR/Euro CMR Joint Scientific Sessions, Feb 2011, Nice, France. BioMed Central, 13 (Suppl 1), pp.P350, 2011, Journal of Cardiovascular Magnetic Resonance. <10.1186/1532-429X-13-S1-P350>. <inserm-00663678>

**HAL Id: inserm-00663678**

**<https://www.hal.inserm.fr/inserm-00663678>**

Submitted on 27 Jan 2012

**HAL** is a multi-disciplinary open access archive for the deposit and dissemination of scientific research documents, whether they are published or not. The documents may come from teaching and research institutions in France or abroad, or from public or private research centers.

L'archive ouverte pluridisciplinaire **HAL**, est destinée au dépôt et à la diffusion de documents scientifiques de niveau recherche, publiés ou non, émanant des établissements d'enseignement et de recherche français ou étrangers, des laboratoires publics ou privés.

POSTER PRESENTATION

Open Access

# Age-related changes in tricuspid inflow: comparison between phase contrast MR imaging and Doppler echocardiography

Stephanie Clement-Guinaudeau<sup>1\*</sup>, Emilie Bollache<sup>2</sup>, Muriel Lefort<sup>2</sup>, Magalie Ladouceur<sup>2</sup>, Ludivine Perdrix<sup>3</sup>, Alban Redheuil<sup>1</sup>, Nadja Kachenoura<sup>2</sup>, Elie Mousseaux<sup>1</sup>

From 2011 SCMR/Euro CMR Joint Scientific Sessions  
Nice, France. 3-6 February 2011

## Objectives

To compare phase contrast magnetic resonance (PCMR) evaluation of tricuspid inflow against echocardiographic measurements and to assess age-related changes in right ventricular (RV) diastolic function evaluated by both techniques.

## Background

Several echocardiographic studies demonstrated the age-related changes in RV diastolic function. An MRI study supported these findings using SSFP sequences but to our knowledge, there is no such evaluation using PCMR images. Although blood flow PCMR imaging is less operator-dependant than echocardiography, which is strongly conditioned by the transducer orientation, post-processing of these data remains time-consuming and precludes clinical applications. Accordingly, the primary goal of this study was to develop a reproducible and accurate method to assess RV diastolic function.

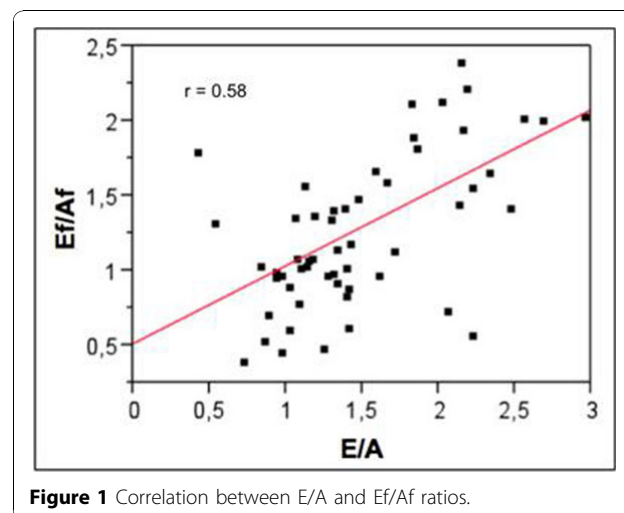
## Methods

We studied 55 healthy subjects (26 men, age:  $42 \pm 17$  years ranged between 13 and 79 years) who had Doppler echocardiography (GE Vivid7) and PCMR imaging (GE 1.5T) on the same day. The study protocol was approved by the institutional review board and informed consent was obtained from all participants. The previously acquired long axis views were used for positioning a retrospectively ECG-gated PC pulse sequences, in a plane perpendicular to the tricuspid inflow at the level of the tips of the opened tricuspid leaflets. PC images

were analyzed using a custom software previously designed to semi-automatically assess transmitral flow. This analysis allowed extracting RV diastolic parameters such as: the peak filling rate ( $E_f$ , ml/s) and the peak atrial filling rate ( $A_f$ , ml/s) and the  $E_f/A_f$  ratio. These parameters were compared to the known echocardiographic parameters (early and late peak velocities ( $E$ ,  $A$ , cm/s) and the  $E/A$  ratio). Inter-operators variability in PCMR measurements was calculated as the absolute difference of the repeated measurements in the percentage of their mean.

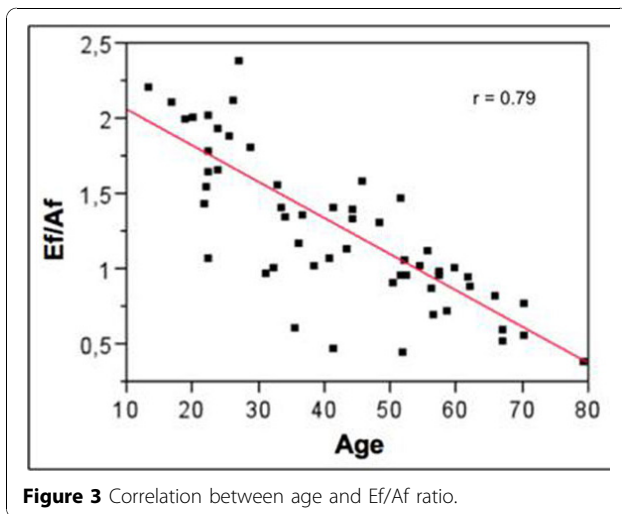
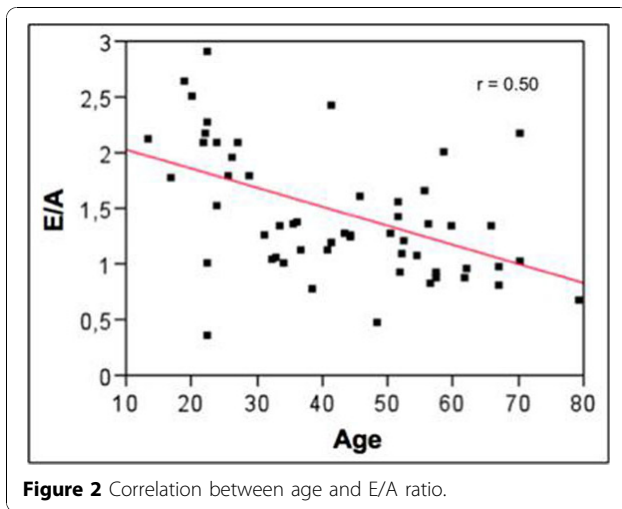
## Results

Low inter-operators variability in PCMR measurements was found ( $2.50 \pm 2.99\%$ ). Comparison between PCMR early to late peak flow rate ratio ( $E_f/A_f$ ) and echocardiographic



**Figure 1** Correlation between E/A and  $E_f/A_f$  ratios.

<sup>1</sup>Radiology Department HEGP, Paris, France  
Full list of author information is available at the end of the article



early to late peak velocity ratio (E/A) resulted in a fair correlation ( $r=0.58$ ;  $p=0.0001$ ; Figure 1). However, a stronger correlation with aging was found when considering the PCMR parameter. Indeed, correlation between age and the echocardiographic ratio (Figure 2) resulted in  $r=0.5$  ( $p<0.001$ ) while it resulted in  $r=0.79$  ( $p<0.001$ ) for the PCMR ratio (Figure 3).

### Conclusion

Fast and reproducible evaluation of tricuspid inflow from PCMR images is possible. Although the diastolic parameters obtained from PCMR images are only fairly correlated with echocardiographic measurements, a stronger relation with aging was found while using PCMR than echocardiographic data.

### Author details

<sup>1</sup>Radiology Department HEGP, Paris, France. <sup>2</sup>INSERM U678 Paris 6 University, Paris, France. <sup>3</sup>Cardiology Department HEGP, Paris, France.

Published: 2 February 2011

doi:10.1186/1532-429X-13-S1-P350

**Cite this article as:** Clement-Guinaudeau *et al.*: Age-related changes in tricuspid inflow: comparison between phase contrast MR imaging and Doppler echocardiography. *Journal of Cardiovascular Magnetic Resonance* 2011 **13**(Suppl 1):P350.

**Submit your next manuscript to BioMed Central and take full advantage of:**

- Convenient online submission
- Thorough peer review
- No space constraints or color figure charges
- Immediate publication on acceptance
- Inclusion in PubMed, CAS, Scopus and Google Scholar
- Research which is freely available for redistribution

Submit your manuscript at  
[www.biomedcentral.com/submit](http://www.biomedcentral.com/submit)

