

## **Vasopressin, ATP and catecholamines differentially control potassium secretion in inner ear cell line.**

Jérôme Nevoux, Marie Teixeira, Say Viengchareun, Claudine Cosson, Daniel Butlen, Marc Lombes, Evelyne Ferrary

► **To cite this version:**

Jérôme Nevoux, Marie Teixeira, Say Viengchareun, Claudine Cosson, Daniel Butlen, et al.. Vasopressin, ATP and catecholamines differentially control potassium secretion in inner ear cell line.. FEBS Letters, Wiley, 2011, 585 (17), pp.2703-8. 10.1016/j.febslet.2011.07.025 . inserm-00656238

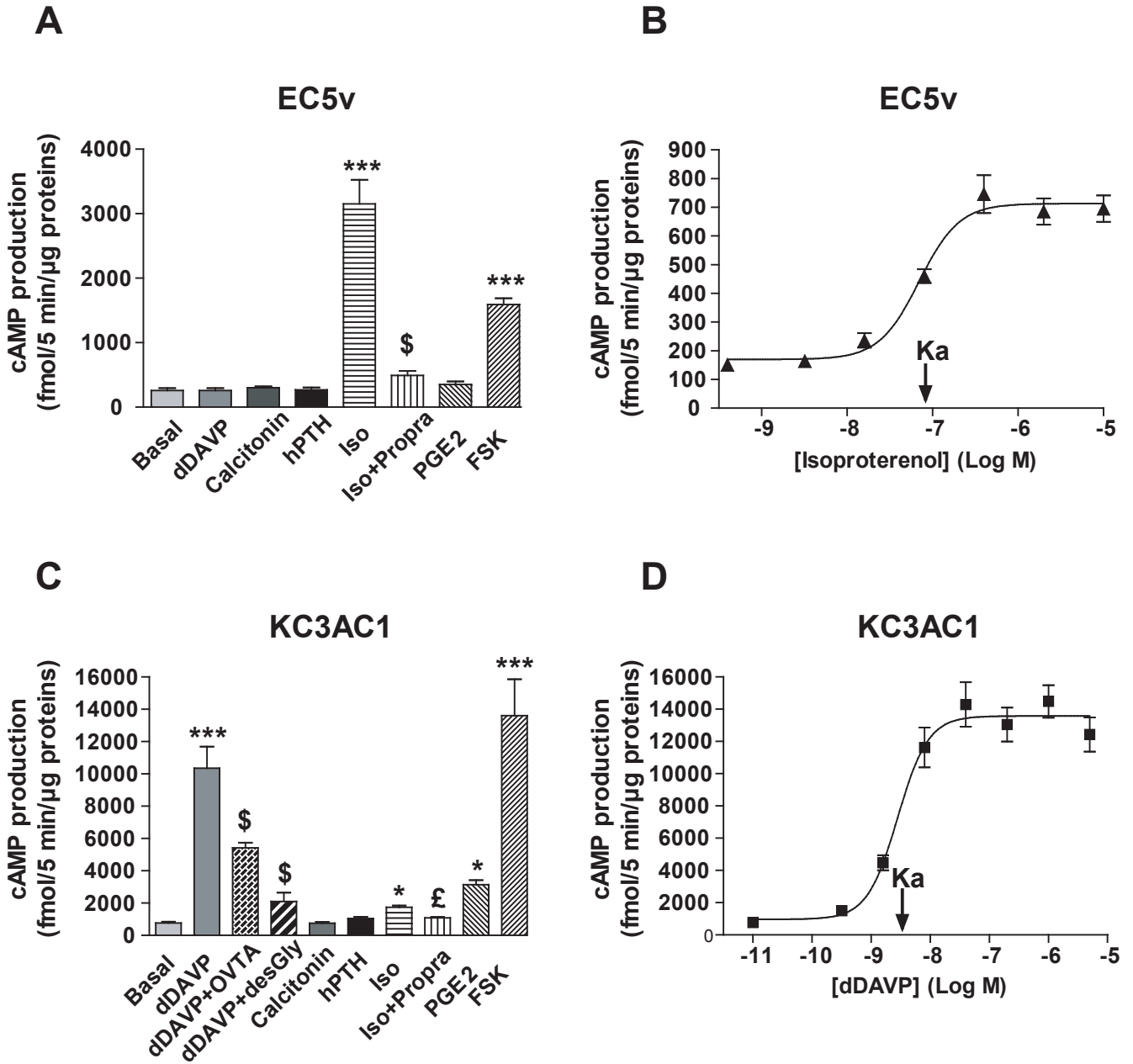
**HAL Id: inserm-00656238**

**<https://www.hal.inserm.fr/inserm-00656238>**

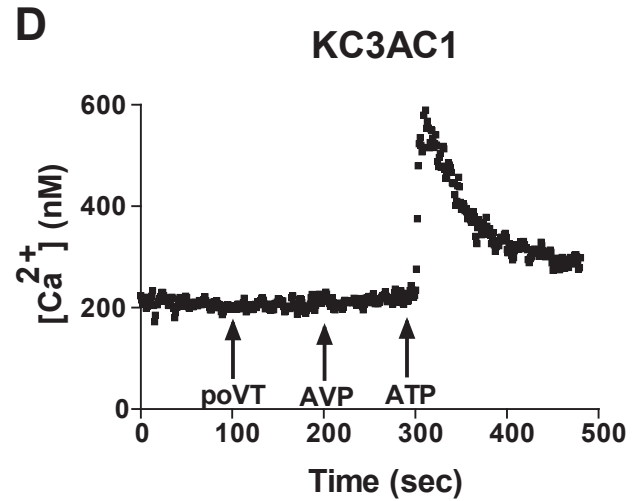
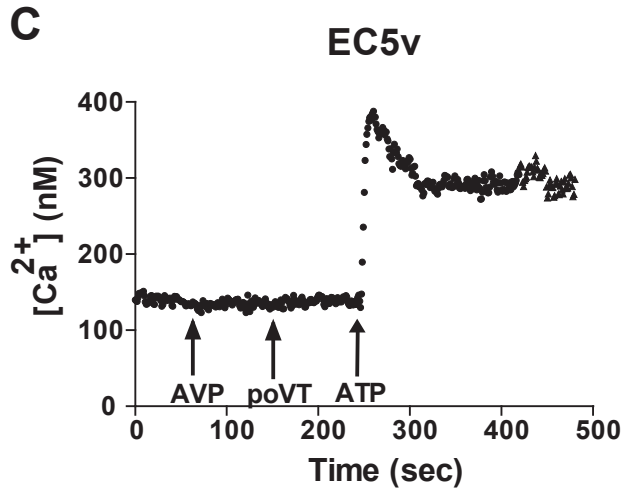
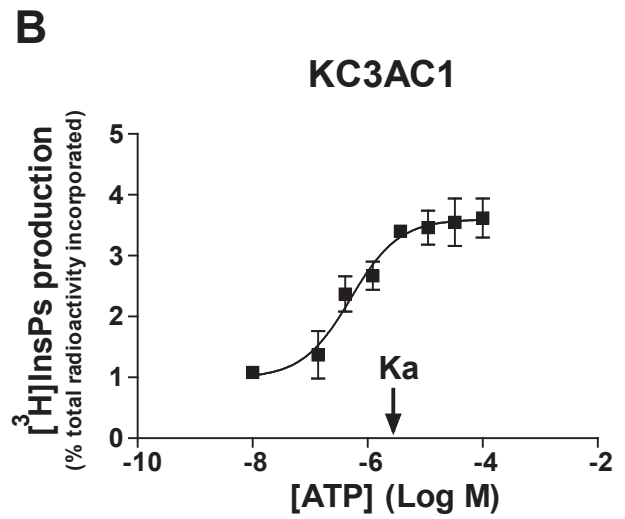
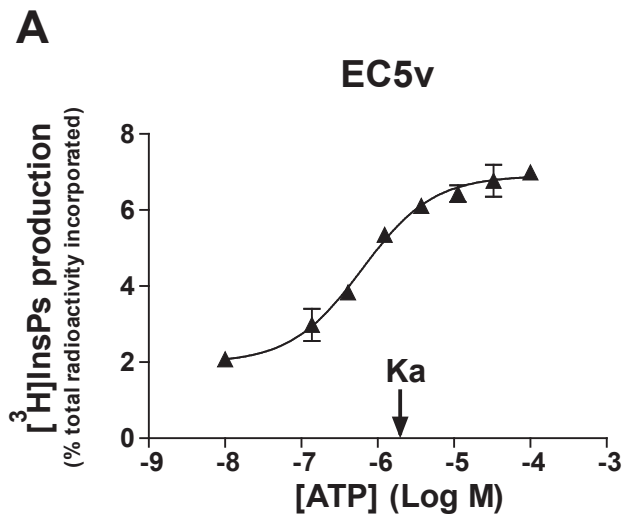
Submitted on 13 Sep 2012

**HAL** is a multi-disciplinary open access archive for the deposit and dissemination of scientific research documents, whether they are published or not. The documents may come from teaching and research institutions in France or abroad, or from public or private research centers.

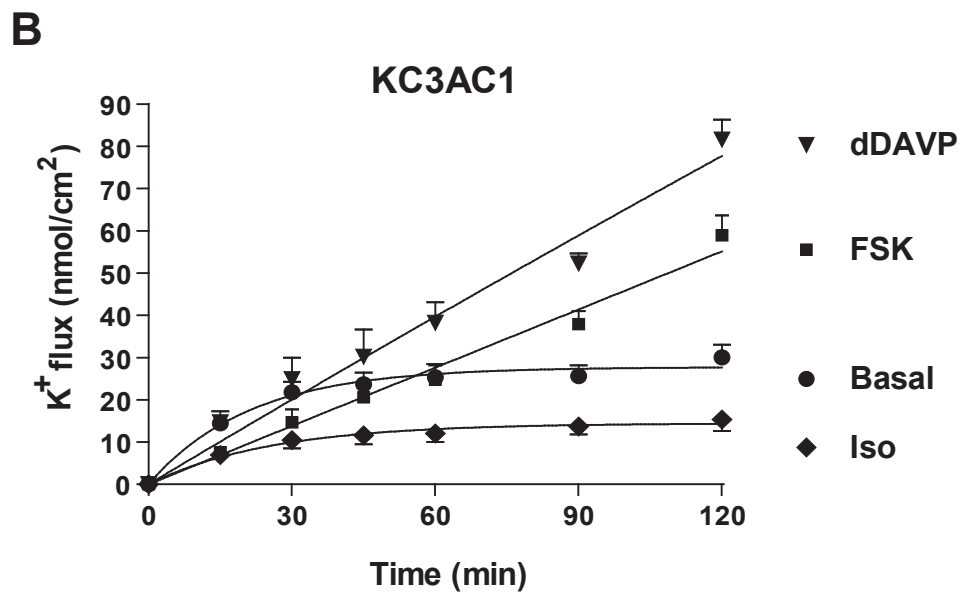
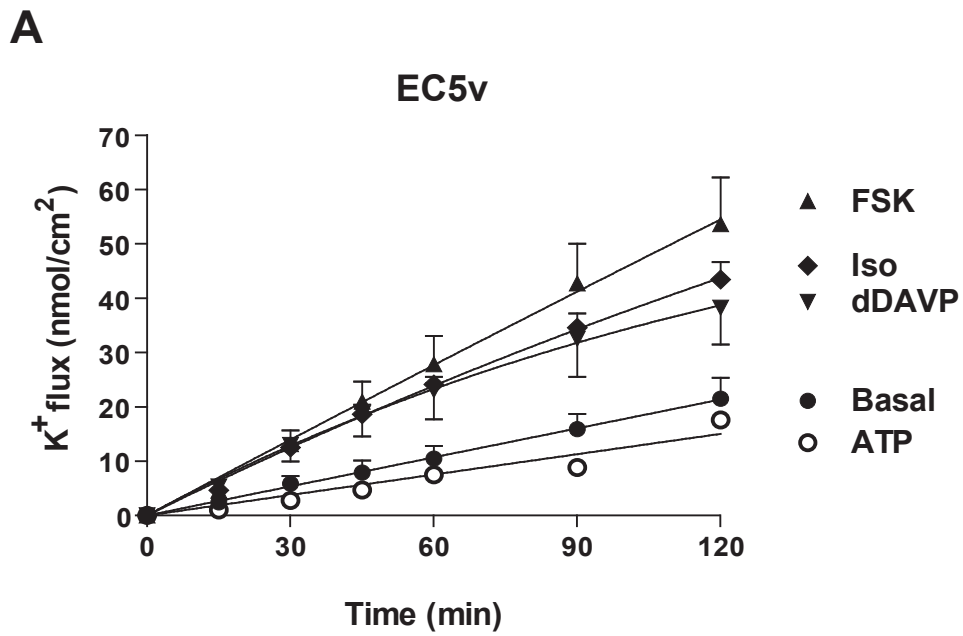
L'archive ouverte pluridisciplinaire **HAL**, est destinée au dépôt et à la diffusion de documents scientifiques de niveau recherche, publiés ou non, émanant des établissements d'enseignement et de recherche français ou étrangers, des laboratoires publics ou privés.



**Figure 1**



**Figure 2**



**Figure 3**