

**Cortical localization of maternal embryonic leucine zipper kinase (MELK) implicated in cytokinesis in early xenopus embryos.**

Jean-Pierre Tassan

► **To cite this version:**

Jean-Pierre Tassan. Cortical localization of maternal embryonic leucine zipper kinase (MELK) implicated in cytokinesis in early xenopus embryos.. Communicative and Integrative Biology, Taylor

Francis Open, 2011, 4 (4), pp.483-5. <10.4161/cib.4.4.15669>. <inserm-00630625>

**HAL Id: inserm-00630625**

**<http://www.hal.inserm.fr/inserm-00630625>**

Submitted on 1 Jul 2012

**HAL** is a multi-disciplinary open access archive for the deposit and dissemination of scientific research documents, whether they are published or not. The documents may come from teaching and research institutions in France or abroad, or from public or private research centers.

L'archive ouverte pluridisciplinaire **HAL**, est destinée au dépôt et à la diffusion de documents scientifiques de niveau recherche, publiés ou non, émanant des établissements d'enseignement et de recherche français ou étrangers, des laboratoires publics ou privés.

## Cortical localization of maternal embryonic leucine zipper kinase (MELK) implicated in cytokinesis in early xenopus embryos

Jean-Pierre Tassan

UMR 6061 CNRS Université de Rennes 1; IFR140 GFAS; Equipe Développement et Polarité Cellulaires; Rennes Cedex, France

**M**ELK has been implicated in a large variety of functions. Because its level is elevated in cancer tissues and it is involved in cell proliferation, MELK is considered as a potential therapeutic target for cancers. In a recent, study we have shown that MELK is involved in cytokinesis in early *Xenopus laevis* embryos. MELK dynamically accumulates at the cell cortex including a narrow band corresponding to the presumptive division furrow shortly before cytokinesis onset. MELK co-localizes and interacts with anillin an important regulator of cytokinesis. In addition, MELK overexpression interferes with accumulation at the cleavage furrow of activated Rho GTPase another crucial regulator of cytokinesis. Interestingly, our study also revealed that a transition implying a change in the direction of asymmetric furrow ingression occurs during early development. After this transition, MELK, as well as other proteins involved in cytokinesis, do not localize anymore as a band at the equatorial cortex but still localizes at the cell cortex. Our results indicate that cortical localization is an important feature of MELK in *X. laevis* embryos.

MELK is a serine/threonine protein kinase originally identified in *Xenopus* oocytes and embryos as Eg3,<sup>1</sup> and later in the mouse<sup>2</sup> due to its specific expression pattern in early embryos. MELK was shown to be involved in the control of cell proliferation,<sup>3,4</sup> regulation of apoptosis,<sup>5</sup> inhibition of spliceosome assembly,<sup>6</sup> hematopoiesis,<sup>7</sup> asymmetric cell divisions<sup>8</sup> and cell cycle.<sup>9,10</sup> Although MELK has been implicated in such a large variety

of biological processes, its precise function remains elusive. In cancer tissues, it was shown that MELK level is dramatically increased and could be beneficial to tumoral cells.<sup>11</sup> In agreement with this view, MELK activity was found to inhibit apoptosis in breast cancer cells.<sup>5</sup> This lead to the proposal that MELK could be a therapeutic target for several types of cancer.<sup>4,5,11,12</sup>

MELK expression is precisely controlled during the cell cycle in two ways. Firstly, the kinase is expressed in cells engaged into the cell cycle, but its amount decreases to undetectable levels in cells that have left the cell cycle to differentiate.<sup>13</sup> Secondly, in cycling cells, MELK mRNA and protein levels fluctuate during the cell cycle with a moderate increase during mitosis.<sup>11,13,14</sup> Interestingly, a correlation was established between high levels of MELK and the malignancy grade in brain tumors.<sup>12,15</sup> Moreover, high levels of MELK were also associated with poor prognosis in breast cancer.<sup>16</sup> Thus MELK appears also to be an important prognosis marker for some cancers.

To extend our understanding of the role of MELK, we studied it in *Xenopus laevis* oocytes and embryos where MELK expression, phosphorylation and activity are tightly controlled.<sup>1,17,18</sup> In our recent study, we discovered that MELK regulates cytokinesis in early embryos.<sup>19</sup> Cytokinesis is the process by which a mother cell divides into two topologically distinct daughter cells. Cell membrane ingression is mediated by an actomyosin-based contractile ring, the assembly and constriction of which are orchestrated by the small GTPase RhoA. Both knockdown and

**Key words:** cytokinesis, mitosis, cell cortex, anillin, RhoA, asymmetric furrowing, xenopus

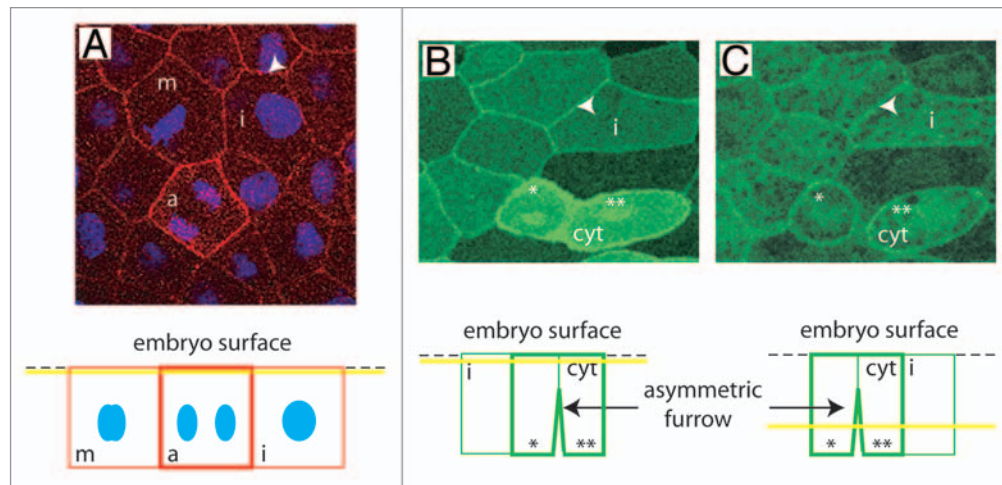
Submitted: 03/30/11

Accepted: 03/30/11

DOI: 10.4161/cib.4.4.15669

Correspondence to: Jean-Pierre Tassan;  
Email: jean-pierre.tassan@univ-rennes1.fr

Addendum to: Le Page Y, Chartrain I, Badouel C, Tassan JP. Function for xMELK in cell division reveals a transition in the mode of cytokinesis during *Xenopus* development. *J Cell Sci* 2011; 124:958–68; PMID: 21378312; DOI: 10.1242/jcs.069567.



**Figure 1.** MELK localization in epithelial cells of *Xenopus gastrula* embryos. (A) Indirect immunofluorescence with anti-MELK antibodies. Endogenous MELK is detected at the cell cortex in interphase cell (arrowhead) and further accumulates at the cell cortex at the metaphase to anaphase transition (m: metaphase, a: anaphase). The yellow line on the scheme at the bottom indicates the position of the confocal plane relative to the cell surface. DNA (blue) which is situated more profoundly in the cells was merged with overlaying MELK signal. (B and C) The mRNA coding for GFP tagged MELK inactive mutant (GFP-MELK K/R) which does not induce cytokinesis failure was microinjected in an embryo at the two cell stage and GFP-MELK K/R was followed in a live gastrula embryo. Two confocal planes taken at the same time are shown. GFP-MELK K/R is localized at the cell cortex of interphase cells (i: interphase cell, arrowhead in b and c) and further accumulates at the cell cortex in cytokinetic cell (cyt). Note that the apical domain of the cytokinetic cell is beginning its division whereas its baso-lateral membrane is already divided. \* and \*\* indicate the two forming daughter cells to facilitate analysis of the original figure and the related scheme at the bottom.

overexpression of *Xenopus* MELK lead to abortive divisions in embryos indicating that MELK must be finely-tuned for cytokinesis to be completed. In agreement with a role in cytokinesis, shortly before its onset the endogenous MELK accumulates as a band at the equatorial cortex which ultimately ingresses and forms the cytokinetic furrow. This band appears very similar to the previously described localization of active RhoA in *Xenopus* early embryos.<sup>20</sup> A dynamic re-localization of MELK occurs at the cell periphery and equatorial cortex shortly before cytokinesis. Using a FRET-based probe, we found that MELK cortical localization correlates with xMELK conformational rearrangement. Furthermore, MELK overexpression leads to concurrent cytokinesis failure and impaired accumulation of active Rho at the division site, which could explain abortive cytokinesis. Interestingly, xMELK co-localizes with anillin, a crucial cytokinetic protein at the equatorial cortex. Moreover, the two proteins can be co-immunoprecipitated. At present the role of this association is unknown. However because anillin interacts with several molecules controlling cytokinesis, a plausible hypothesis is that MELK phosphorylates an anillin-interacting partner.

Unexpectedly, the localization of MELK at the equatorial cortex as well as other cytokinetic proteins like actin, myosin heavy chain and active Rho but not anillin is regulated during development. Indeed, MELK does not accumulate at the equatorial cortex in gastrula embryos. This change appears to be correlated with the cell size considerably decreasing during embryo cleavage. In addition, an inversion of asymmetric furrowing occurs during this period. This leads to asymmetric furrow progression from basal to apical cortex in embryo epithelial cells that have passed the transition in the cytokinesis mode (Fig. 1). The role of asymmetric furrowing is unknown, but it is encountered in divers organism including worm and ascidian embryos<sup>21-23</sup> as well as MDCKII cells cultured in vitro.<sup>24</sup> In the latter case, the asymmetric furrowing proceeds from the basolateral side towards the apical domain. This indicates that asymmetric furrowing is not only specific to embryo and was conserved through evolution. This in turn may suggest that it could have an important function remaining, however, to be elucidated. After the transition in the cytokinesis mode, MELK accumulates at the cell cortex during the metaphase to anaphase transition (Fig. 1a), similarly

as in human cells.<sup>25</sup> Thus, MELK cortical localization is correlated with the metaphase to anaphase transition, which supposes that it may be related to spindle assembly checkpoint. Interestingly, a substantial amount of endogenous MELK is localized at the cell cortex also in interphase cells and mitotic cells until metaphase (arrowhead in Fig. 1A). Similarly, GFP-MELK fusion protein localizes at the cell cortex during interphase (arrowheads in Fig. 1B and C). Therefore, when considering the cortical localization, two MELK pools can be distinguished: an interphasic MELK (iMELK) and a mitotic MELK (mMELK). This suggests that in cycling cells MELK could also have an important role during interphase. During mitosis, mMELK, by increasing the global MELK amount at the cortex may reinforce the action of iMELK, if iMELK and mMELK have the same substrate(s). However, mMELK and iMELK may phosphorylate different protein(s) and thus may have distinct functions during the cell cycle. Undoubtedly, it will be critical to identify MELK substrate(s) to understand its role. How the cortical localizations of iMELK and mMELK are regulated is linked to another intriguing question of how cells can manage the two

MELK populations. It seems likely that phosphorylation of MELK, which appears complex because of the large number of identified sites phosphorylated *in vivo*<sup>18,26,27</sup> may have a role in such mechanism. When cells exit mitosis, the MELK level localized at the cortex returns to the interphase level. Interestingly, an abrupt degradation of approximately 50% of MELK in mitotic cells occurs specifically upon mitotic exit.<sup>13</sup> It will be interesting to determine if upon mitotic exit mMELK is targeted to degradation whereas iMELK level remains stable. The understanding how MELK is regulated, will contribute to define MELK function during the cell cycle. This knowledge may be valuable for future studies on the use of MELK as a therapeutic target.

#### Acknowledgments

Author thanks Jacek Kubiak for critical reading of this manuscript. This work was supported by the C.N.R.S., the Ligue Départementale contre le Cancer (22 et 35) and the ARC.

#### References

- Paris J, Philippe M. Poly(A) metabolism and polysomal recruitment of maternal mRNAs during early *Xenopus* development. *Dev Biol* 1990; 140:221-4.
- Heyer BS, Warsowe J, Solter D, Knowles BB, Ackerman SL. New member of the Snf1/AMPK kinase family, Melk, is expressed in the mouse egg and preimplantation embryo. *Mol Reprod Dev* 1997; 47:148-56.
- Nakano I, Paucar AA, Bajpai R, Dougherty JD, Zewail A, Kelly TK, et al. Maternal embryonic leucine zipper kinase (MELK) regulates multipotent neural progenitor proliferation. *J Cell Biol* 2005; 170:413-27.
- Hebbard LW, Maurer J, Miller A, Lesperance J, Hassell J, Oshima RG, Terskikh AV. Maternal embryonic leucine zipper kinase is upregulated and required in mammary tumor-initiating cells *in vivo*. *Cancer Res* 2010; 70:8863-73.
- Lin ML, Park JH, Nishidate T, Nakamura Y, Katagiri T. Involvement of maternal embryonic leucine zipper kinase (MELK) in mammary carcinogenesis through interaction with Bcl-G, a pro-apoptotic member of the Bcl-2 family. *Breast Cancer Res* 2007; 9:17.
- Vulsteke V, Beullens M, Boudrez A, Keppens S, Van Eynde A, Rider MH, et al. Inhibition of spliceosome assembly by the cell cycle-regulated protein kinase MELK and involvement of splicing factor NIPP1. *J Biol Chem* 2004; 279:8642-7.
- Saito R, Tabata Y, Muto A, Arai K, Watanabe S. Melk-like kinase plays a role in hematopoiesis in the zebra fish. *Mol Cell Biol* 2005; 25:6682-93.
- Cordes S, Frank CA, Garriga G. The *C. elegans* MELK ortholog PIG-1 regulates cell size asymmetry and daughter cell fate in asymmetric neuroblast divisions. *Development* 2006; 133:2747-56.
- Davezac N, Baldin V, Blot J, Ducommun B, Tassan JP. Human pEg3 kinase associates with and phosphorylates CDC25B phosphatase: a potential role for pEg3 in cell cycle regulation. *Oncogene* 2002; 21:7630-41.
- Mirey G, Chartrain I, Froment C, Quaranta M, Bouche JP, Monsarrat B, et al. CDC25B phosphorylated by pEg3 localizes to the centrosome and the spindle poles at mitosis. *Cell Cycle* 2005; 4:806-11.
- Gray D, Jubb AM, Hogue D, Dowd P, Kljavin N, Yi S, et al. Maternal embryonic leucine zipper kinase/murine protein serine-threonine kinase 38 is a promising therapeutic target for multiple cancers. *Cancer Res* 2005; 65:9751-61.
- Nakano I, Masterman-Smith M, Saigusa K, Paucar AA, Horvath S, Shoemaker L, et al. Maternal embryonic leucine zipper kinase is a key regulator of the proliferation of malignant brain tumors, including brain tumor stem cells. *J Neurosci Res* 2008; 86:48-60.
- Badouel C, Chartrain I, Blot J, Tassan JP. Maternal embryonic leucine zipper kinase is stabilized in mitosis by phosphorylation and is partially degraded upon mitotic exit. *Exp Cell Res* 2010; 316:2166-73.
- Whitfield ML, Sherlock G, Saldanha AJ, Murray JI, Ball CA, Alexander KE, et al. Identification of genes periodically expressed in the human cell cycle and their expression in tumors. *Mol Biol Cell* 2002; 13:1977-2000.
- Marie SK, Okamoto OK, Uno M, Hasegawa AP, Oba-Shinjo SM, Cohen T, et al. Maternal embryonic leucine zipper kinase transcript abundance correlates with malignancy grade in human astrocytomas. *Int J Cancer* 2008; 122:807-15.
- Pickard MR, Green AR, Ellis IO, Caldas C, Hedge VL, Mourta-Maarabouni M, Williams GT. Dysregulated expression of Fau and MELK is associated with poor prognosis in breast cancer. *Breast Cancer Res* 2009; 11:60.
- Blot J, Chartrain I, Roghi C, Philippe M, Tassan JP. Cell Cycle Regulation of pEg3, a New *Xenopus* Protein Kinase of the KIN1/PAR-1/MARK Family. *Dev Biol* 2002; 241:327-38.
- Badouel C, Korner R, Frank-Vaillant M, Couturier A, Nigg EA, Tassan JP. M-phase MELK Activity is Regulated by MPF and MAPK. *Cell Cycle* 2006; 5:883-9.
- Le Page Y, Chartrain I, Badouel C, Tassan JP. A functional analysis of MELK in cell division reveals a transition in the mode of cytokinesis during *Xenopus* development. *J Cell Sci* 2011; 124:958-68.
- Bement WM, Benink HA, von Dassow G. A microtubule-dependent zone of active RhoA during cleavage plane specification. *J Cell Biol* 2005; 170:91-101.
- Audhya A, Hyndman F, McLeod IX, Maddox AS, Yates JR, 3rd, Desai A, Oegema K. A complex containing the Sm protein CAR-1 and the RNA helicase CGH-1 is required for embryonic cytokinesis in *Caenorhabditis elegans*. *J Cell Biol* 2005; 171:267-79.
- Maddox AS, Lewellyn L, Desai A, Oegema K. Anillin and the septins promote asymmetric ingression of the cytokinetic furrow. *Dev Cell* 2007; 12:827-35.
- Prodon F, Chenevert J, Hebras C, Dumollard R, Faure E, Gonzalez-Garcia J, et al. Dual mechanism controls asymmetric spindle position in ascidian germ cell precursors. *Development* 2010; 137:2011-21.
- Reinsch S, Karsenti E. Orientation of spindle axis and distribution of plasma membrane proteins during cell division in polarized MDCKII cells. *J Cell Biol* 1994; 126:1509-26.
- Chartrain I, Couturier A, Tassan JP. Cell cycle dependent cortical localization of pEg3 protein kinase in *Xenopus* and human cells. *Biol Cell* 2006; 98:253-63.
- Daub H, Olsen JV, Bairlein M, Gnäd F, Oppermann FS, Korner R, et al. Kinase-selective enrichment enables quantitative phosphoproteomics of the kinome across the cell cycle. *Mol Cell* 2008; 31:438-48.
- Dephousse N, Zhou C, Villen J, Beausoleil SA, Bakalarski CE, Elledge SJ, Gygi SP. A quantitative atlas of mitotic phosphorylation. *Proc Natl Acad Sci USA* 2008; 105:10762-7.