

## Model for predicting short-term mortality of severe sepsis.

Christophe Adrie, Adrien Francais, Antonio Alvarez-Gonzalez, Roman Mounier, Elie Azoulay, Jean-Ralph Zahar, Christophe Clec'H, Dany Godgran-Toledano, Laure Hammer, Adrien Descorps-Declere, et al.

► **To cite this version:**

Christophe Adrie, Adrien Francais, Antonio Alvarez-Gonzalez, Roman Mounier, Elie Azoulay, et al.. Model for predicting short-term mortality of severe sepsis.. Critical Care, BioMed Central, 2009, 13 (3), pp.R72. <10.1186/cc7881>. <inserm-00387577>

**HAL Id: inserm-00387577**

**<http://www.hal.inserm.fr/inserm-00387577>**

Submitted on 26 May 2009

**HAL** is a multi-disciplinary open access archive for the deposit and dissemination of scientific research documents, whether they are published or not. The documents may come from teaching and research institutions in France or abroad, or from public or private research centers.

L'archive ouverte pluridisciplinaire **HAL**, est destinée au dépôt et à la diffusion de documents scientifiques de niveau recherche, publiés ou non, émanant des établissements d'enseignement et de recherche français ou étrangers, des laboratoires publics ou privés.

This Provisional PDF corresponds to the article as it appeared upon acceptance. Copyedited and fully formatted PDF and full text (HTML) versions will be made available soon.

## Model for predicting short-term mortality of severe sepsis

*Critical Care* 2009, **13**:R72 doi:10.1186/cc7881

Christophe Adrie (christophe.adrie@outcomerea.org)  
Adrien Francais (adrien.francais@gmail.com)  
Antonio Alvarez-Gonzalez (pyalvarez@hotmail.com)  
Roman Mounier (roman.mounier@lmr.ap-hp.fr)  
Elie Azoulay (elie.azoulay@sls.ap-hop-paris.fr)  
Jean-Ralph Zahar (jean-ralph.zahar@nck.ap-hop-paris.fr)  
Christophe Clec'h (christophe.clech@avc.aphp.fr)  
Dany Godgran-Toledano (Dany.Toledano@ch-gonesse.fr)  
Laure Hammer (lhammer@chu-grenoble.fr)  
Adrien Descorps-Declere (adrien.descorps-declere@abc.ap-hop-paris.fr)  
Samir Jamali (samirjamali@ch-dourdan.fr)  
Jean-Francois Timsit (JFTimsit@chu-grenoble.fr)

**ISSN** 1364-8535

**Article type** Research

**Submission date** 30 November 2008

**Acceptance date** 19 May 2009

**Publication date** 19 May 2009

**Article URL** <http://ccforum.com/content/13/3/R72>

This peer-reviewed article was published immediately upon acceptance. It can be downloaded, printed and distributed freely for any purposes (see copyright notice below).

Articles in *Critical Care* are listed in PubMed and archived at PubMed Central.

For information about publishing your research in *Critical Care* go to

<http://ccforum.com/info/instructions/>

## Model for predicting short-term mortality of severe sepsis

Christophe Adrie<sup>1,2</sup>, Adrien Francais<sup>3</sup>, Antonio Alvarez-Gonzalez<sup>1</sup>, Roman Mounier<sup>4</sup>, Elie Azoulay<sup>5</sup>, Jean-Ralph Zahar<sup>6</sup>, Christophe Clec'h<sup>7</sup>, Dany Goldgran-Toledano<sup>8</sup>, Laure Hammer<sup>9</sup>, Adrien Descorps-Declere<sup>10</sup>, Samir Jamali<sup>11</sup>, Jean-Francois Timsit<sup>3,9</sup>

The paper was written on behalf of the Outcomerea Study Group.

1. Medical-Surgical Intensive Care Unit, Delafontaine Hospital, 2 rue du Dr Lamaze, 93205 Saint Denis, France
2. Department of Physiology, Cochin Hospital, Paris Descartes University, Assistance Publique des Hôpitaux de Paris, 27 rue du Faubourg Saint Jacques 75014 Paris, France
3. INSERM U823, Epidemiology of Cancer and Severe Illnesses, Albert Bonniot Institute, BP 217, 38043 Grenoble, France
4. Medical Intensive Care Unit, Hôpital Louis Mourier, 178, rue des Renouillers 92701 Colombes, France
5. Medical Intensive Care Unit, Saint Louis Teaching Hospital, 1 rue Claude Vellefaux 75011 Paris, France
6. Department of Microbiology, Necker Teaching Hospital, 149, rue de Sèvres 75743 PARIS Cedex 15, France
7. Medical-Surgical Intensive Care Unit, Avicenne Teaching Hospital, 125, rue de Stalingrad 93009 Bobigny Cedex, France
8. Medical-Surgical Intensive Care Unit, Gonesse Hospital, 25 rue Pierre de Theilley, BP 30071, 95503 Gonesse, France
9. Medical Intensive Care Unit, Albert Michallon Teaching Hospital, Joseph Fournier University, BP 217, 38043 Grenoble cedex 09, France
10. Surgical Intensive Care Unit, Antoine Bécère Teaching Hospital, 157, rue de la Porte de Trivaux 92141 Clamart Cedex, France
11. Medical-Surgical Intensive Care Unit, Dourdan Hospital, 2, rue du Potelet B.P. 102, 91415 Dourdan Cedex, France

**Corresponding author:** Prof. Jean-François Timsit, INSERM U 823, team 11: Outcome of Cancer and Critical Illnesses and Medical ICU, Centre Hospitalier Universitaire de Grenoble, 38043, Grenoble, Cedex France Tel: 33(0)4 76 76 87 79 Fax: 33(0)4 76 76 55 69. E-mail: [jf.timsit@outcomerea.org](mailto:jf.timsit@outcomerea.org).

## **Abstract**

**Introduction:** To establish a prognostic model for predicting 14-day mortality in ICU patients with severe sepsis overall and according to place of infection acquisition and to sepsis episode number.

**Methods:** In this prospective multicentre observational study on a multicentre database (OUTCOMEREA) including data from 12 ICUs, 2268 patients with 2737 episodes of severe sepsis were randomly divided into a training cohort (n=1458) and a validation cohort (n=810). Up to four consecutive severe sepsis episodes per patient occurring within the first 28 ICU days were included. We developed a prognostic model for predicting death within 14 days after each episode, based on patient data available at sepsis onset.

**Results:** Independent predictors of death were logistic organ dysfunction (OR, 1.22 per point,  $p < 10^{-4}$ ), septic shock (OR, 1.40;  $p = 0.01$ ), rank of severe sepsis episode (1 reference, 2: OR, 1.26;  $p = 0.10$  [greater than or equal to]3: OR, 2.64 ;10-3), multiple sources of infection (OR; 1.45,  $p = 0.03$ ), simplified acute physiology score II (OR, 1.02 per point;  $p < 10^{-4}$ ), McCabe score ([greater than or equal to]2)(OR, 1.96;  $p < 10^{-4}$ ), and number of chronic co-morbidities (1: OR, 1.75;  $p = 10^{-3}$ , [greater than or equal to]2: OR, 2.24,  $p = 10^{-3}$ ). Validity of the model was good in whole cohorts (AUC-ROC, 0.76; 95%CI [0.74; 0.79] and HL Chi-square: 15.3 ( $p = 0.06$ ) for all episodes pooled).

**Conclusions:** In ICU patients, a prognostic model based on a few easily obtained variables is effective in predicting death within 14 days after the first to fourth episode of severe sepsis complicating community-, hospital-, or ICU-acquired infection.

## **Introduction:**

Severe sepsis remains a leading cause of death in industrialized countries, and the number of deaths caused by sepsis is increasing despite improved survival rates [1, 2]. Apart from measures directed to the infectious cause (antibiotics and surgery), the treatment remains chiefly supportive despite many randomised controlled trials [3, 4]. Sepsis is a syndrome, not a disease; and many factors explain the variability of outcomes, such as differences in infection sites, causative pathogens, and time and location of infection onset (community, hospital, or ICU) [1]. This heterogeneity explains that no reliable measures of disease activity have been identified. Attempts to select uniform populations often used ill-defined non-inclusion criteria such as moribund status.

Despite the current tendency to focus on mortality rates after 1 year or longer, which are highly relevant to cost-effectiveness issues, short-term mortality may be a more appropriate outcome for determining whether new treatments correct the acute effects of severe sepsis, since many patients who recover from severe sepsis die later on from pre-existing chronic illnesses. Moreover, outcomes and risk factors of patients with severe sepsis vary considerably with the number of episodes and with the time and place of acquisition (community, hospital, or ICU).

The objective of this study was to design a prognostic model for predicting death within 14 days of severe sepsis onset at any time during the first 28 days of the ICU stay. The model was to be based on variables collected at admission and on the day the sepsis episode was diagnosed. Up to four sepsis episodes per patient were included. We evaluated the performance of our model separately in subgroups defined based on the place of infection acquisition. We compared our model to other, widely used scores. Our model may prove useful for designing future studies.

## **Methods and materials:**

### **Data Source**

We conducted a prospective observational study using data entered into a multicentre database (OUTCOMEREA<sup>®</sup>) from November 1996 to April 2007. The database, fed by 12 French ICUs, contains data on admission features and diagnosis, daily disease severity, iatrogenic events, nosocomial infections, and vital status. Data for a random sample of at least 50 patients older than 16 years and having ICU stays longer than 24 hours were consecutively entered into the database each year. Each participating ICU chose to perform random sampling by taking either consecutive admissions to selected ICU beds throughout the year or consecutive admissions to all ICU beds over a single month. The contact physicians for the database in the participating ICUs, who are listed in the appendix, are accredited according to French law [5].

### **Ethical Issues**

According to French law, this study did not require patient consent, as it involved research on a database. The study was approved by the institutional review board of the Centres d'Investigation Rhône-Alpes-Auvergne.

### **Data collection**

Data were collected daily by senior physicians in the participating ICUs. For each patient, the data were entered into an electronic case-report form using VIGIREA<sup>®</sup> and RHEA<sup>®</sup> data-capture software (OUTCOMEREA<sup>™</sup>, Rosny-sous-Bois, France), and all case-report forms were then entered into the OUTCOMEREA<sup>®</sup> data warehouse. All codes and definitions were established prior to study initiation. The following information was recorded for each patient: age and sex, admission category (medical, scheduled surgery, or unscheduled surgery), origin (home, ward, or emergency room), and McCabe score [6]. Based on previously reported reproducibility data, the McCabe score was transformed into a dummy

variable, i.e., “death expected within 5 years, yes or no” [7]. Severity of illness was evaluated on the first ICU day using the Simplified Acute Physiology Score (SAPS II) [8], Logistic Organ Dysfunction (LOD) score [9], Mortality Probability models II0 score (MPM0 II score) [10, 11], and Acute Physiologic and Chronic Health Evaluation (APACHE) II score [12]. Knaus scale definitions were used to record pre-existing chronic organ failures including respiratory, cardiac, hepatic, renal, and immune system failures [12]. Patients were followed until the end of the hospital stay in order to record the vital status 14 days after sepsis onset. For the model, we computed SAPS II and LOD scores based on the data immediately available on admission or on the day (up to 24 hours) before the diagnosis of each episode of sepsis.

### **Quality of the database**

The data-capture software automatically conducted multiple checks for internal consistency of most of the variables at entry in the database. Queries generated by these checks were resolved with the source ICU before incorporation of the new data into the database. At each participating ICU, data quality was controlled by having a senior physician from another participating ICU check a 2% random sample of the study data.

### **Study Population**

Because diagnostic coding has been found unreliable [13], we used parameters collected by our data-capture software to select patients with severe sepsis, defined as systemic inflammatory response syndrome (SIRS) combined with an infectious episode and dysfunction of at least one organ, occurring at or within 28 days after admission to the ICU. We excluded patients with treatment-limitation decisions taken before or on the day of the diagnosis of severe sepsis. At least two of the following criteria were required for the diagnosis of SIRS: core temperature  $\geq 38^{\circ}\text{C}$  or  $\leq 36^{\circ}\text{C}$ , heart rate  $\geq 90$  beats/min, respiratory rate  $\geq 20$  breaths/min,  $\text{PCO}_2 \leq 32$  mm Hg or use of mechanical ventilation, and peripheral

leukocyte count  $\geq 12,000/\text{mm}^3$  or  $\leq 4000/\text{mm}^3$ . Organ dysfunction was defined as follows: cardiovascular system failure was a need for vasoactive and/or inotropic drugs, and/or systolic blood pressure  $< 90$  mm Hg, and/or a drop in systolic blood pressure  $> 40$  mm Hg from baseline; renal dysfunction was urinary output  $\leq 700$  ml/d in a patient not previously undergoing haemodialysis for chronic renal failure; respiratory dysfunction was  $\text{PaO}_2 < 70$  mm Hg or mechanical ventilation or a  $\text{PaO}_2/\text{FiO}_2$  ratio of  $\leq 250$  (or  $\leq 200$  in patients with pneumonia); thrombocytopenia was a platelet count  $< 80,000/\text{mm}^3$ , and elevated plasma lactate was a lactate level  $\geq 3$  mmol/L. Severe sepsis was defined as sepsis associated with at least one organ dysfunction as described above, and septic shock was defined as sepsis-induced hypotension persisting despite adequate fluid resuscitation together with organ dysfunction; thus, patients receiving inotropic or vasoactive agents who had organ dysfunction but who were no longer hypotensive were classified as having septic shock [14]. Lengths of ICU and hospital stays were computed starting at ICU admission.

The presence or absence of infection was documented according to the standard definitions developed by the Centers for Disease Control [15]; in addition, quantitative cultures of specimens obtained by bronchoalveolar lavage, protected specimen brush, protected plugged catheter, or tracheal aspiration were required to diagnose ventilator-associated pneumonia [16]. Community-acquired infection was defined as infection manifesting before or within 48 hours after hospital admission. Hospital-acquired infection was infection manifesting at least 48 hours after hospital admission but before ICU admission. ICU-acquired infection was diagnosed at least 48 hours after ICU admission. Infection sites were categorized as follows: pneumonia, peritonitis, urinary tract infection, exacerbation of chronic obstructive pulmonary disease, primary bacteraemia (excluding untreated *Staphylococcus epidermidis* bacteraemia), miscellaneous sites (mediastinitis, prostatitis, osteomyelitis, and others), and multiple sites. Early effective antibiotic therapy was defined as



effectiveness on the causative agent of at least one of the empirically selected antibiotics on the day of the diagnosis of an episode of severe sepsis. Relapse/recurrence was defined as a new episode of severe sepsis with the same microorganism and the same infected organ. New episodes of severe sepsis involving different microorganisms or different organs from the previous episode were classified as separate episodes [17].

### **Outcome variable of interest**

The outcome variable of interest was death within 14 days after the diagnosis of an episode of severe sepsis (up to four) acquired in the community, hospital, or ICU.

We then compared the accuracy of these models to the main usual ones (SAPS II and APACHE II scores, and MPM II<sub>0</sub>)

### **Statistical Analysis**

Our main objective was to develop a patient-based prognostic model that predicted death within 14 days after the diagnosis of the first, second, third, or fourth episode of severe sepsis present within 28 days after ICU admission. We randomly allocated two-thirds of the study patients to the training cohort and the remaining third to the validation cohort. As up to four episodes of severe sepsis per patient were included, we conducted a cluster analysis, in which each cluster was composed of one patient with one to four sepsis episodes.

Results were expressed as numbers (percentages) for categorical variables and as medians (quartiles) for continuous variables. Qualitative variables were compared using the chi-square or Fisher exact test and continuous variables using the Wilcoxon or Kruskal-Wallis test. A correlation exists between the 14-day outcomes of two consecutive episodes of severe sepsis occurring in the same patient. Consequently, the relationship between early death and the study variables was evaluated using generalized estimating equations [18], which are well suited to the analysis of correlated data. We used a logit link function, because the distribution of the outcome variable (14-day mortality) was binary. Correlations between multiple

episodes of severe sepsis occurring in the same patient were estimated using Pearson residuals and parameters, according to the maximum likelihood method. We assumed an exchangeable-structure correlation matrix for the data within each cluster. The number of the sepsis episode and the time from admission to the severe sepsis episode were introduced successively into the global model, and the final model that minimized the Akaike information criterion was retained.

Variables associated with early death at the 0.2 level by univariate analysis were introduced in the multivariate model and subsequently selected in order to improve model deviance. The assumption that quantitative variables were linear in the logit was checked using cubic polynomials and graphical methods. In the absence of log-linearity, continuous variables were transformed into qualitative variables according to the slope of the cubic polynomial functions and to the distribution of the variables. A pooled test of clinically relevant two-way interactions was performed on the final model, and correlations between selected variables were verified. We checked for potential co-linearity of the variables included in the final model. R values of less than 0.2 were considered acceptable.

Our primary assessment of model performance was goodness-of-fit as evaluated by the Hosmer-Lemeshow statistic and by calibration curves. Lower Hosmer-Lemeshow values and higher  $p$  values ( $>0.05$ ) indicate better fit. We also assessed discrimination (i.e., the ability of the model to separate survivors and non-survivors) using the area under the curve (AUC) of the receiver-operating characteristics (ROC) curve. AUC values greater than 0.80 indicate good discrimination.

The quality of our model was tested separately in community-acquired, hospital-acquired, and ICU-acquired sepsis. Then, the final model was evaluated in the validation cohort and compared to other models (SAPS II scores, APACHE II scores and MPM II<sub>0</sub> score) using the method of Hanley and McNeil to compare ROC-AUC values [19]. Analyses

were computed using the SAS 9.1.3 package (SAS Institute, Cary, NC), R, and Medcalc 5.00 (Medcalc, Ghent, Belgium).

## Results:

Among the 7719 patients in the OUTCOMEREA<sup>®</sup> base, 2268 experienced 2737 episodes of severe sepsis, including 674 patients who had 793 episodes of septic shock. Of the 2268 patients, 1458 patients with 1716 episodes of severe sepsis were included in the training cohort and 810 patients with 1021 episodes of severe sepsis were included in the validation cohort (Figure 1), using a 2:1 randomisation procedure. Characteristics at ICU admission and on the day of severe sepsis onset in 14-day survivors and non-survivors are shown in Tables 1 and 2, respectively. Factors that were significantly associated with early death included worse SAPS II and LOD scores at ICU admission, septic shock (e.g. requiring either inotropic therapy or vasoactive agent support), multiple organ failure (which showed the strongest association), and co-morbidities (immunodeficiency, chronic heart failure, chronic hepatic failure, acute respiratory failure, and acute heart failure). On the day of the diagnosis of severe sepsis (Table 2), factors significantly associated with early death included the use of invasive procedures and a need for vasoactive agents and/or inotropic support. *Escherichia coli*, *Pseudomonas* spp., methicillin-resistant *Staphylococcus aureus*, *Candida* spp., bacteraemia, and multiple sources of infection were also associated with early death in the univariate analysis.

We determined the best generalized linear model, that is, the model comprising variables that were both readily available and independently associated with early death (Table 3). Among variables collected on the day of diagnosis of severe sepsis, four were associated with an increased risk of early death: worse LOD score, vasoactive and/or inotropic therapy (e.g., septic shock), second episode of severe sepsis compared to the first, and third or fourth episode of sepsis compared to the first. Among infection characteristics entered into the model, only multiple sources of infection significantly increased the risk of early death. Interestingly, the nature of the causative micro-organism was not an independent

predictor of death. Among variables collected at ICU admission, the following significantly predicted death within 14 days of a sepsis episode: worse SAPS II score, presence of a fatal underlying disease yielding a McCabe score of 2 or 3, presence of one chronic illness, and presence of two or more chronic illnesses. Corticosteroid therapy did not predict early death, even when interactions with septic shock were tested (OR=0.99 [0.66-1.49],  $p=0.96$ ), and therefore was not included in our model. Absence of early effective antibiotic therapy was associated with death (OR=0.69 [0.53-0.91],  $p=0.01$ ) but was not introduced in the model because this information was not available on the day of severe sepsis.

Despite the risk of co-linearity, we considered that LOD on the first day of sepsis and SAPS II at admission could be used in the same model. First, when sepsis was acquired in the ICU, the variables shared by these two scores were not recorded at the same time. Second, using two scores in the same model decreases the loss of information caused by differences in cut-offs. There was no significant co-linearity between our variables (All R values  $<0.2$ ).

We tested our model in the training cohort in each of the three categories of patients defined by the site of infection acquisition (community, hospital, or ICU) (Figure 2). In the overall training cohort, the final model exhibited good calibration (Hosmer-Lemeshow [HL] chi-square, 8.6;  $p>0.38$ ) and good discrimination (AUC-ROC curve, 0.82). When we confined the analysis to the 573 episodes of community-acquired severe sepsis, the final model showed good calibration (HL chi-square, 8.0;  $p>0.43$ ) and discrimination (AUC-ROC curve, 0.87). Validity was satisfactory in the analyses of hospital-acquired and ICU-acquired episodes, with HL chi-square  $p$  values greater than 0.05 (0.74 and 0.15, respectively) and AUC-ROC curve values of 0.80 in both groups.

We also evaluated model accuracy for the 1458 first severe sepsis episodes in the training group ( $n=1458$  patients) versus all subsequent episodes ( $n=258$ , including 56 after community-acquired severe sepsis, 96 after hospital-acquired severe sepsis, and 106 after

ICU-acquired severe sepsis; Figure 1). AUC was 0.82 for first episodes and 0.82 for subsequent episodes. The difference was not significant according to the Hanley and McNeil test [19]. Moreover, calibration was satisfactory for both groups (HL chi square  $p > 0.10$ ).

Interestingly, model accuracy was similar for severe sepsis at ICU admission ( $n=586$ ,  $AUC=0.85$ ) and later in the ICU stay (days 2-4:  $n=670$ ,  $AUC=0.82$ ; days 5-7:  $n=133$ ,  $AUC=0.80$ ; days 8-14:  $n=200$ ,  $AUC=0.80$ ; and days 15-28:  $n=127$ ,  $AUC=0.80$ ). Furthermore, multiple-site infection was not associated with the rank of severe sepsis episode and therefore did not correlate with the number of episodes ( $p=0.87$  by Fisher exact test).

Performance was slightly lower in the validation cohort (Figure 3). The final model used on all episodes of severe sepsis showed good calibration (HL chi-square 15.3,  $p=0.06$ ) and good discrimination (AUC-ROC curve, 0.76). Results for community- and hospital-acquired infections were satisfactory, with AUC-ROC curve values of 0.80 and 0.79, respectively, and with HL chi-square  $p$  values greater than 0.05 in both groups (0.35 and 0.06, respectively). Prediction of early death after ICU-acquired severe sepsis was less accurate, with an AUC-ROC curve of 0.70 but an HL chi-square  $p$  value of 0.02. These data are similar to with those obtained from calibration curves [See Additional Data File 1, Figure 1].

We also evaluated model performance at different times of the total study period. To this end, we considered three subperiods: 1997-2000, 2001-2004, and after 2004. Results were similar for these three periods in terms of discrimination and calibration ( $AUC=0.802$ , HL chi-square=10.8 for the first period; 0.832 and 4.8 for the second period; and 0.832 and 11.0 for the last period).

Moreover, we compared our model to daily severity scores. APACHE II, MPM II<sub>0</sub>, and SAPS II scores were significantly less accurate than our model, with AUCs of 0.73, 0.66, and 0.72, respectively ( $<10^{-4}$  in all cases), and poor calibration (HL chi-square  $P$  values of 0.03,  $<10^{-4}$ , and 0.02, respectively) (Figure 4).

## **Discussion:**

We found that predicting death within 14 days after the onset of severe sepsis during the first 28 ICU days was feasible in patients with 0 to 3 previous episodes of severe sepsis. By adjusting for confounders, we were able to build a predictive model in a training cohort that performed well in the validation cohort. If used in randomised trials, this prognostic model might help to include patients with similar disease severity and to improve adjustment for confounders.

We chose to study short-term mortality, despite the current trend among researchers to focus on long-term mortality [20-22]. Most studies of sepsis used 28-day all-cause mortality as the primary end-point. However, life-limiting disease is a common risk factor for sepsis and may cause death shortly after successful treatment of the septic episode. Early morbidity associated with sepsis is dominated by the side effects of life-supporting interventions (e.g., mechanical ventilation, dialysis, and vasoactive agents), whereas delayed morbidity (e.g., neuromuscular weakness, cognitive dysfunction, and neuropsychiatric sequelae) is chiefly related to prolonged ICU management. Sepsis is an acute event, and its main manifestation, acute organ dysfunction, does not seem associated with long-term mortality in patients who survive the original insults [22]. Furthermore, many studies failed to adjust appropriately for treatment-limitation decisions such as DNR given early (<2 days) or later during the ICU stay. Underlying illness is the main reason for DNR orders, which are taken in up to half the patients who die in the ICU [23]. Moreover, treatment-limitation decisions were found to be independently associated with ICU death [24].

Severe infections *per se* are associated with a decrease in life expectancy. In a study that included controls from the general population, sepsis not only caused acute mortality, but also increased the risk of death for up to 5 years after the septic episode, even after adjustment for pre-existing co-morbidities [25]. The risk of delayed death during the first year was

associated with the severity of the septic episode [25]. Several other studies showed that mortality and morbidity remained increased for several years among hospital survivors of infection and sepsis [26-30]. However, there is a two-way relationship between acute and chronic illnesses. Chronic disease increases the risk of infection and severe sepsis, and survivors of severe sepsis may experience an increase in their burden of chronic disease, which in turn may further elevate the risk for subsequent acute illnesses, thereby initiating a spiral of events that eventually causes death [22]. Therefore, a reasonable hypothesis is that early mortality (e.g., within 14 days) is ascribable to the severity of acute severe sepsis [31, 32] and to the effectiveness of treatment, rather than to underlying chronic illnesses, provided patients with treatment-limitation decisions are excluded, as done in our study. Short-term survival may need to be viewed as a surrogate measure, as it is desirable only when followed by long-term survival with an acceptable quality of life. On the other hand, focusing on very long-term mortality, which is extremely relevant to healthcare-cost issues, may mask beneficial effects of drugs used to treat sepsis if the patient dies later on as a result of an underlying chronic illness associated with a risk of sepsis [22]. High death rates due to underlying diseases may explain why many therapeutic trials in patients with severe sepsis failed to detect benefits related to the experimental treatments. Although emphasis is often put on the  $\alpha$  risk of false-positive results, the  $\beta$  risk of missing true effects as a result of inadequate statistical power is just as important for the overall population, as false-negative results deprive patients of effective treatments. Therefore, when designing large trials of treatments for severe sepsis, it may be appropriate to select candidate treatments in preliminary trials that use short-term mortality as the primary endpoint.

We found that mortality from severe sepsis could be predicted based on variables associated with the PIRO concept [33] (P: co-morbidities, McCabe; I: multiple-site infection, number of severe sepsis episodes; and R and O: organ dysfunction and vasoactive drug use).



These findings are in accordance with a very recent report of a PIRO-based score designed to predict 28-day mortality from sepsis, thus focusing on a nearer time horizon than many recent studies evaluating longer term outcome (e.g. > 3 months) [20]. Studies of pneumonia already used 14-day mortality as the primary outcome of interest, to separate the impact of pneumonia from that of co-morbidities or other factors [31, 32].

Our study has several limitations. First, the location of the patient before hospital admission was not recorded in the early years of our database. Patients who are chronically in contact with healthcare systems on an outpatient or day-hospital basis (e.g., for chronic dialysis or other chronic treatments) are at risk for severe infection with resistant strains, although they are not admitted [34]. We have been recording this variable since April 2000 and have found that fewer than 5% of patients directly admitted to the database ICUs are recipients of chronic hospital-based outpatient care. Moreover, hospital-acquired infection (in patients transferred to the ICU from other wards) was diagnosed in more than half our patients and was not associated with 14-day mortality (Table 1,  $p=0.85$ ). Second, calibration as assessed using the Hosmer-Lemeshow goodness-of-fit was unsatisfactory (HL chi-square  $P$  value  $<0.05$ ), although discrimination remained good (AUC-ROC= 0.7 [0.65-0.75]) for ICU-acquired severe sepsis in the validation dataset (Figure 3). Third, our model was developed in a single type of healthcare system. External validation studies are needed before the model can be used in countries that have different healthcare systems from the one in France. Finally, it should be borne in mind that the relevance of 14-day mortality to long-term treatment benefits remains to be evaluated. However our model was clearly superior to widely used models (figure 4) and may prove helpful for designing and analyzing future trials.

### **Conclusions:**

We developed a model for predicting death within 14 days after the diagnosis of the first, second, third, or fourth episode of severe sepsis occurring within 28 days after ICU

admission. The model is based on a few readily available variables. It may help to evaluate the effectiveness of new drugs or treatment strategies in reversing severe sepsis. In contrast, long-term mortality may be a better marker for the efficacy of treatments directed against sepsis, as recovery from sepsis may be followed by death due to underlying illnesses.

**Key messages:**

- We developed a model for predicting short-term (14 days) mortality after each episode of severe sepsis, using readily available variables. The model proved very accurate for predicting mortality after one to four severe sepsis episodes in the ICU.
- The model was accurate for community, hospital, and ICU-acquired episodes of severe sepsis, in both the training and the validation cohort (n=2737 episodes overall).
- This prediction model is designed to predict death related directly to severe sepsis, as opposed to co-morbidities or DNR decisions, which contribute substantially to longer-term mortality rates.
- Our model may help to evaluate the effectiveness of a drug or strategy in severe sepsis, by avoiding Type II errors stemming from inadequate statistical power to detect therapeutic effects despite the substantial mortality due to co-morbidities, treatment-limitation decisions and DNR orders.
- In future studies, our model may help to select uniform patient groups for inclusion in clinical trials and to improve adjustment for confounders.

**Abbreviations:** *ICU*; intensive care unit, *SAPS II score*; Simplified Acute Physiology Score, *LOD score*; Logistic Organ Dysfunction score, *MPM II<sub>0</sub> score*; Mortality Probability models II<sub>0</sub> score, *APACHE II score*; Acute Physiologic and Chronic Health Evaluation II score, *COPD*; chronic obstructive pulmonary disease, *DNR*; do not resuscitate order, *ROC*; receiver-operating characteristics, *AUC*; area under the curve, *OR*; odds ratio, *HL*; Hosmer-Lemeshow chi-square.

**Competing interest:** OUTCOMEREA is supported by nonexclusive educational grants from Aventis Pharma (France), Wyeth, and Pfizer; and by grants from the Centre National de la Recherche Scientifique (CNRS), the Institut National de Recherche Medicale (INSERM), and the Agence Nationale pour la Recherche (ANR). None of these organizations have had input in designing the study reporting the results and publishing it.

**Authors' contributions:**

CA, AF, and JFT participated in the design of the study and writing of the article. All authors participated in data acquisition, data analysis, data interpretation, critical revision of the manuscript for intellectual content, and approval of the version submitted for publication. All authors read and approved the final manuscript.

**Acknowledgements:** We are indebted to A. Wolfe MD for helping with the manuscript and all the participation of the member of the Outcomerea Study Group [See Additional data file 2]

## References:

1. Adrie C, Alberti C, Chaix-Couturier C, Azoulay E, De Lassence A, Cohen Y, Meshaka P, Cheval C, Thuong M, Troche G, Garrouste-Orgeas M and Timsit JF: **Epidemiology and economic evaluation of severe sepsis in France: age, severity, infection site, and place of acquisition (community, hospital, or intensive care unit) as determinants of workload and cost.** *J Crit Care* 2005, **20**: 46-58.
2. Martin GS, Mannino DM, Eaton S and Moss M: **The epidemiology of sepsis in the United States from 1979 through 2000.** *N Engl J Med* 2003, **348**: 1546-1554.
3. Bernard GR, Vincent JL, Laterre PF, LaRosa SP, Dhainaut JF, Lopez-Rodriguez A, Steingrub JS, Garber GE, Helterbrand JD, Ely EW and Fisher CJ, Jr.: **Efficacy and safety of recombinant human activated protein C for severe sepsis.** *N Engl J Med* 2001, **344**: 699-709.
4. Warren HS, Suffredini AF, Eichacker PQ and Munford RS: **Risks and benefits of activated protein C treatment for severe sepsis.** *N Engl J Med* 2002, **347**: 1027-1030.
5. Health FMO: **Decree # 2002-465 form April , 2002, relative to public and private hospitals providing intensive care.** . *Journal Officiel de la République Française* 2002, **82**.
6. McCabe WR and Jackson GG: **Gram-negative bacteremia, I: etiology and ecology.** *Arch Intern Med* 1962, **110**: 847-853.
7. Adrie C, Azoulay E, Francais A, Clec'h C, Darques L, Schwebel C, Nakache D, Jamali S, Goldgran-Toledano D, Garrouste-Orgeas M and Timsit JF: **Influence of gender on the outcome of severe sepsis: a reappraisal.** *Chest* 2007, **132**: 1786-1793.
8. Le Gall JR, Lemeshow S and Saulnier F: **A new Simplified Acute Physiology Score (SAPS II) based on a European/North American multicenter study.** *Jama* 1993, **270**: 2957-2963.
9. Le Gall JR, Klar J, Lemeshow S, Saulnier F, Alberti C, Artigas A and Teres D: **The Logistic Organ Dysfunction system. A new way to assess organ dysfunction in the intensive care unit. ICU Scoring Group.** *Jama* 1996, **276**: 802-810.
10. Lemeshow S and Le Gall JR: **Modeling the severity of illness of ICU patients. A systems update.** *Jama* 1994, **272**: 1049-1055.
11. Lemeshow S, Teres D, Klar J, Avrunin JS, Gehlbach SH and Rapoport J: **Mortality Probability Models (MPM II) based on an international cohort of intensive care unit patients.** *Jama* 1993, **270**: 2478-2486.

12. Knaus WA, Draper EA, Wagner DP and Zimmerman JE: **APACHE II: a severity of disease classification system.** *Crit Care Med* 1985, **13**: 818-829.
13. Misset B, Nakache D, Vesin A, Darmon M, Garrouste-Orgeas M, Mourvillier B, Adrie C, Pease S, de Beaugard MA, Goldgran-Toledano D, Metais E and Timsit JF: **Reliability of diagnostic coding in intensive care patients.** *Crit Care* 2008, **12**: R95.
14. **American College of Chest Physicians/Society of Critical Care Medicine Consensus Conference: definitions for sepsis and organ failure and guidelines for the use of innovative therapies in sepsis.** *Crit Care Med* 1992, **20**: 864-874.
15. Garner JS, Jarvis WR, Emori TG, Horan TC and Hughes JM: **CDC definitions for nosocomial infections, 1988.** *Am J Infect Control* 1988, **16**: 128-140.
16. Pham LH, Brun-Buisson C, Legrand P, Rauss A, Verra F, Brochard L and Lemaire F: **Diagnosis of nosocomial pneumonia in mechanically ventilated patients. Comparison of a plugged telescoping catheter with the protected specimen brush.** *Am Rev Respir Dis* 1991, **143**: 1055-1061.
17. Combes A, Luyt CE, Fagon JY, Wolff M, Trouillet JL and Chastre J: **Early predictors for infection recurrence and death in patients with ventilator-associated pneumonia.** *Crit Care Med* 2007, **35**: 146-154.
18. Diggle PJ, Liang K and Zeger SL. *Analysis of Longitudinal Data.* 1994, Oxford: Oxford University Press
19. Hanley JA and McNeil BJ: **A method of comparing the areas under receiver operating characteristic curves derived from the same cases.** *Radiology* 1983, **148**: 839-843.
20. Angus DC, Laterre PF, Helterbrand J, Ely EW, Ball DE, Garg R, Weissfeld LA and Bernard GR: **The effect of drotrecogin alfa (activated) on long-term survival after severe sepsis.** *Crit Care Med* 2004, **32**: 2199-2206.
21. Herridge MS, Cheung AM, Tansey CM, Matte-Martyn A, Diaz-Granados N, Al-Saidi F, Cooper AB, Guest CB, Mazer CD, Mehta S, Stewart TE, Barr A, Cook D and Slutsky AS: **One-year outcomes in survivors of the acute respiratory distress syndrome.** *N Engl J Med* 2003, **348**: 683-693.
22. Yende S and Angus DC: **Long-term Outcomes from Sepsis.** *Curr Infect Dis Rep* 2007, **9**: 382-386.
23. Ferrand E, Robert R, Ingrand P and Lemaire F: **Withholding and withdrawal of life support in intensive-care units in France: a prospective survey. French LATAREA Group.** *Lancet* 2001, **357**: 9-14.

24. Azoulay E, Pochard F, Garrouste-Orgeas M, Moreau D, Montesino L, Adrie C, de Lassence A, Cohen Y and Timsit JF: **Decisions to forgo life-sustaining therapy in ICU patients independently predict hospital death.** *Intensive Care Med* 2003, **29**: 1895-1901.
25. Quartin AA, Schein RM, Kett DH and Peduzzi PN: **Magnitude and duration of the effect of sepsis on survival. Department of Veterans Affairs Systemic Sepsis Cooperative Studies Group.** *Jama* 1997, **277**: 1058-1063.
26. Brun-Buisson C, Meshaka P, Pinton P and Vallet B: **EPISEPSIS: a reappraisal of the epidemiology and outcome of severe sepsis in French intensive care units.** *Intensive Care Med* 2004, **30**: 580-8.
27. Manns BJ, Lee H, Doig CJ, Johnson D and Donaldson C: **An economic evaluation of activated protein C treatment for severe sepsis.** *N Engl J Med* 2002, **347**: 993-1000.
28. Perl TM, Dvorak L, Hwang T and Wenzel RP: **Long-term survival and function after suspected gram-negative sepsis.** *Jama* 1995, **274**: 338-45.
29. Rangel-Frausto MS, Pittet D, Costigan M, Hwang T, Davis CS and Wenzel RP: **The natural history of the systemic inflammatory response syndrome (SIRS). A prospective study.** *Jama* 1995, **273**: 117-123.
30. Somogyi-Zalud E, Zhong Z, Lynn J, Dawson NV, Hamel MB and Desbiens NA: **Dying with acute respiratory failure or multiple organ system failure with sepsis.** *J Am Geriatr Soc* 2000, **48**: S140-145.
31. Baddour LM, Yu VL, Klugman KP, Feldman C, Ortqvist A, Rello J, Morris AJ, Luna CM, Snyderman DR, Ko WC, Chedid MB, Hui DS, Andreumont A and Chiu CC: **Combination antibiotic therapy lowers mortality among severely ill patients with pneumococcal bacteremia.** *Am J Respir Crit Care Med* 2004, **170**: 440-444.
32. Feldman C, Klugman KP, Yu VL, Ortqvist A, Chiu CC, Chedid MB, Rello J and Wagener M: **Bacteraemic pneumococcal pneumonia: impact of HIV on clinical presentation and outcome.** *J Infect* 2007, **55**: 125-135.
33. Levy MM, Fink MP, Marshall JC, Abraham E, Angus D, Cook D, Cohen J, Opal SM, Vincent JL and Ramsay G: **2001 SCCM/ESICM/ACCP/ATS/SIS International Sepsis Definitions Conference.** *Intensive Care Med* 2003, **29**: 530-538.
34. Marcel JP, Alfa M, Baquero F, Etienne J, Goossens H, Harbarth S, Hryniewicz W, Jarvis W, Kaku M, Leclercq R, Levy S, Mazel D, Nercelles P, Perl T, Pittet D, Vandenbroucke-Grauls C, Woodford N and

Jarlier V: **Healthcare-associated infections: think globally, act locally.** *Clin Microbiol Infect* 2008,  
**14:** 895-907.

## Figure legends

**Figure 1.** Flow diagram of the 2268 patients with severe sepsis who formed the basis for the study and who were identified among the 7719 patients included in the Outcomerea<sup>®</sup>

Database. Data are expressed as counts (number of episodes of severe sepsis) or percentages.

Mortality is defined as death within 14 days after the diagnosis of severe sepsis. SIRS, systemic inflammatory response syndrome; Sepsis, SIRS with infection; ICU, intensive care unit; community-acquired infection, infection manifesting before or within 48 hours after hospital admission; hospital-acquired infection, infection manifesting at least 48 hours after hospital admission but before ICU admission; ICU-acquired infection, infection manifesting at least 48 hours after ICU admission. N: number of patients (number of episode). †:

Mortality (percentage %)

**Figure 2.** Receiver-Operating Characteristics (ROC) curves and Hosmer-Lemeshow (HL) chi-square test results for the prediction model in the training cohort (n=1458 patients, 1716 episodes), according to the type of severe sepsis (community-, hospital-, or ICU-acquired).

Dashed curves represent 95% confidence intervals (95%CI) of the area under the curve (AUC) of the ROC curve.

**Figure 3.** Receiver-Operating Characteristics (ROC) curves and Hosmer-Lemeshow (HL) chi-square test results of the prediction model in the validation cohort (n=810,

episodes=1021), according to the day of severe sepsis. Dashed curves represent 95% confidence intervals (95%CI) of the area under the curve (AUC) of the ROC curve.

**Figure 4:** Comparison of our prediction model with other, widely used models. The final study model (blue line) used on all episodes of severe sepsis showed good calibration (HL chi-square 15.3,  $p=0.06$ ) and good discrimination (AUC-ROC curve, 0.76). APACHE II, MPM0 II and SAPS II scores were significantly less accurate than our model, with AUCs of



0.73, 0.66, and 0.72, respectively ( $10^{-4}$  in all cases), and poor calibration (HL chi-square  $p$  values of 0.03,  $<10^{-4}$ , and 0.02, respectively).

**Table 1. Baseline characteristics at ICU admission of 1458 patients with severe sepsis**

Variables at ICU admission	Patients alive 14 days after severe sepsis (n=1177)	Patients who died within 14 days after severe sepsis (n=281)	p value Chi2 test
Male gender	725 (61.6)	188 (66.9)	0.10
Age	66 [52- 76]	69 [56-77]	<10 <sup>-2</sup>
Transfer from ward	600 (51)	145 (51.6)	0.85
SAPS II	41 [31-53]	59 [44- 5]	<10 <sup>-4</sup>
LOD	4 [2-6]	7 [5-10]	<10 <sup>-4</sup>
SOFA	6 [4-8]	9[7-12]	<10 <sup>-4</sup>
APACHE II	18 [14-22]	24 [20-29]	<10 <sup>-4</sup>
<b>Admission category</b>	(4 missing)		
Medical	845 (71.8)	207 (73.7)	0.53
Emergency surgery	230 (19.5)	52 (18.5)	0.69
Scheduled surgery	98 (8.3)	22 (7.8)	0.79
<b>McCabe score</b>	(4 missing)	(1 missing)	<10 <sup>-4</sup>
1	694 (59)	99 (35.2)	
2	397 (33.7)	134 (47.7)	
3	82 (7)	47 (16.7)	
<b>Main symptom at admission</b>			
Multiple organ failure	39 (3.3)	29 (10.3)	<10 <sup>-2</sup>
Shock	367 (31.2)	105 (37.4)	0.05
Acute respiratory failure	384 (32.6)	73 (26)	0.03
Exacerbation of COPD	61 (5.2)	12 (4.3)	0.53
Acute renal failure	50 (4.2)	10 (3.6)	0.60
Coma	140 (11.9)	39 (13.9)	0.36
Trauma	12 (1)	1 (0.4)	0.29
Continuous monitoring	97 (8.2)	7 (2.5)	<10 <sup>-2</sup>
Scheduled surgery	27 (2.3)	5 (1.8)	0.60
<b>History of immunodeficiency</b>			
Haematological malignancy	78 (6.6)	29 (10.3)	0.03
Metastatic cancer	59 (5)	25 (8.9)	0.01
AIDS	41 (3.5)	16 (5.7)	0.09
Chemotherapy	90 (7.6)	32 (11.4)	0.04
Steroid therapy	68 (5.8)	28 (10)	0.01
Neutropenia	42 (3.6)	13 (4.6)	0.40
<b>Co-morbidities (Knaus definitions)</b>			
Chronic pulmonary failure	198 (16.8)	57 (20.3)	0.17
Immunodeficiency	187 (15.9)	67 (23.8)	<10 <sup>-2</sup>
Chronic heart failure	142 (12.1)	48 (17.1)	0.02
Chronic hepatic failure	52 (4.4)	35 (12.5)	<10 <sup>-2</sup>
Chronic renal failure	29 (2.5)	15 (5.3)	0.01
Exactly one chronic illness	405 (34.4)	136 (48.4)	<10 <sup>-4</sup>
Two or more chronic illnesses	94 (8.0)	42 (15.0)	<10 <sup>-3</sup>
Diabetes mellitus	88 (7.5)	26 (9.3)	0.32
ICU stay (days)	11 [6-23]	8 [4-12]	<10 <sup>-4</sup>
Hospital stay (days)	33 [19-57]	11 [6-17]	<10 <sup>-4</sup>
<b>Type of acquisition of first episode of severe sepsis</b>			0.46
Community-acquired	471 (40)	102 (36.3)	
Hospital-acquired	454 (38.7)	112 (39.9)	
ICU-acquired	252 (21.4)	67 (23.8)	

ICU, intensive care unit; COPD, chronic obstructive pulmonary disease; AIDS, acquired immunodeficiency syndrome

**Table 2. Baseline characteristics of the 1458 patients in the training cohort, on the first day of severe sepsis**

Variables on the day with severe sepsis	Number of episodes of severe sepsis in patients alive 14 days after severe sepsis (n=1367)	Number of episodes of severe sepsis in patients who died within 14 days after severe sepsis (n=349)	p value Chi2 test
<b>Organ dysfunctions based on the LOD score</b>			
Neurological	386 (28.2)	155 (44.4)	<10 <sup>-4</sup>
Cardiovascular	590 (43.2)	237 (67.9)	<10 <sup>-4</sup>
Renal	1052 (77)	316 (90.5)	<10 <sup>-4</sup>
Haematological	174 (12.7)	73 (20.9)	<10 <sup>-4</sup>
Hepatic	199 (14.6)	98 (28.1)	<10 <sup>-4</sup>
<b>Procedures</b>			
Vasoactive and/or inotropic drugs	681 (49.8)	249 (71.3)	<10 <sup>-4</sup>
Mechanical ventilation	943 (69)	299 (85.7)	<10 <sup>-4</sup>
Arterial catheter	367 (26.8)	142 (40.7)	<10 <sup>-4</sup>
Central catheter	769 (56.3)	266 (76.2)	<10 <sup>-4</sup>
Swan catheter	70 (5.1)	48 (13.8)	<10 <sup>-4</sup>
At least one intravascular catheter	817 (59.8)	278 (79.7)	<10 <sup>-4</sup>
Urinary tract catheter	1081 (79.1)	311 (89.1)	<10 <sup>-4</sup>
<b>Treatments on the first day of severe sepsis</b>			
Corticosteroid	350 (25.6)	107 (30.7)	0.06
Antibiotic	1190 (87.1)	294 (84.2)	0.17
Extra-renal replacement therapy	68 (5)	51 (14.6)	<10 <sup>-4</sup>
Early effective antibiotic therapy	1036 (75.8)	250 (71.6)	0.11
<b>Micro-organism</b>			
<i>Escherichia coli</i>	170 (12.4)	60 (17.2)	0.02
<i>Streptococcus pneumoniae</i>	104 (7.6)	22 (6.3)	0.41
<i>Pseudomonas</i> species	153 (11.2)	52 (14.9)	0.06
<i>Staphylococcus aureus</i>	173 (12.7)	44 (12.6)	0.98
Methicillin-resistant <i>S. aureus</i>	53 (3.9)	23 (6.6)	0.03
Methicillin-susceptible <i>S. aureus</i>	120 (8.8)	21 (6)	0.09
<i>Candida</i> species	42 (3.1)	20 (5.7)	0.02
<i>Enterococcus</i> species	124 (9.1)	41 (11.7)	0.13
<i>Acinetobacter baumannii</i>	14 (1)	3 (0.9)	0.78
Other Gram-positive	110 (8)	22 (6.3)	0.27
Multiple organisms	162 (11.9)	37 (10.6)	0.52
Resistant organisms	95 (6.9)	33 (9.5)	0.05
Unknown	581 (42.5)	124 (35.5)	0.02
<b>Site of infection</b>			
Pneumonia	668 (48.9)	171 (49)	0.96
Peritonitis	187 (13.7)	55 (15.8)	0.32
Urinary tract	186 (13.6)	52 (14.9)	0.53
Exacerbation of COPD	127 (9.3)	33 (9.5)	0.92
All forms of bacteraemia	425 (31.1)	134 (38.4)	0.01
Primary bacteraemia	129 (9.4)	34 (9.7)	0.86
Associated bacteraemia	296 (21.7)	100 (28.7)	<10 <sup>-2</sup>
Catheter-related infection	86 (6.3)	22 (6.3)	0.99
Miscellaneous infection sites	136 (9.9)	39 (11.2)	0.50
Multiple infection sites	156 (11.4)	59 (16.9)	<10 <sup>-2</sup>
<b>Rank of severe sepsis episode</b>			
One	1177 (86.1)	281 (80.5)	0.01
Two	152 (11.1)	49 (14)	
Three	30 (2.2)	17 (4.9)	
Four	8 (0.6)	2 (0.6)	

**Table 3. Generalized linear model obtained in our study**

Main effect	Beta estimate	Odds ratio	p value
Intercept	-4.9419	-	<10 <sup>-4</sup>
<b>Parameters on the day of severe sepsis</b>			
LOD (per point)	0.1951	1.22 [1.16-1.27]	<10 <sup>-4</sup>
Septic shock	0.3335	1.40 [1.08-1.81]	0.01
First episode of severe sepsis	-	-	-
Second episode of severe sepsis	0.2304	1.26 [0.96-1.66]	0.10
Third or fourth episode of severe sepsis	0.9719	2.64 [1.71-4.08]	<10 <sup>-4</sup>
Multiple sites of infection	0.3734	1.45 [1.04-2.03]	0.03
<b>Variables at ICU admission</b>			
SAPS (per point)	0.0244	1.02 [1.01-1.03]	<10 <sup>-4</sup>
Fatal illness by McCabe Score(score 2 or 3)	0.6749	1.96 [1.43-2.70]	<10 <sup>-4</sup>
No chronic illness	-	-	-
Exactly one chronic illness	0.5592	1.75 [1.25-2.45]	0.001
Two or more chronic illnesses	0.8084	2.24 [1.39-3.62]	0.001

The area under the Receiver-Operating Characteristics curve was 0.822 and the Hosmer-Lemeshow chi-square test was 8.6 ( $p > 0.05$ , 8 df), indicating good discrimination and good calibration of the final model in the training cohort. The following variables were tested in the generalized linear model: LOD, SOFA, septic shock, high-dose vasoactive drugs (epinephrine and/or norepinephrine  $> 0.1 \mu\text{g/kg/min}$ ), multiple sites of infection, SAPS II score, age, number of chronic organ failures (none, exactly one, or two or more), arterial, central venous line or Swan-Ganz catheter, diagnosis at ICU admission, year of admission, centre, early effective antibiotic therapy, corticosteroid therapy, male gender, main symptom (multiple organ failure and cardiogenic shock), metastatic cancer, mechanical ventilation, urinary tract catheter, sedation, extrarenal replacement therapy, McCabe score, nature of the microorganism (*E. coli*, *Candida* spp and methicillin-susceptible *S. aureus*), infection site and LOD increase from the day before to the day of severe sepsis diagnosis.

To calculate the predicted risk of death for each patient:

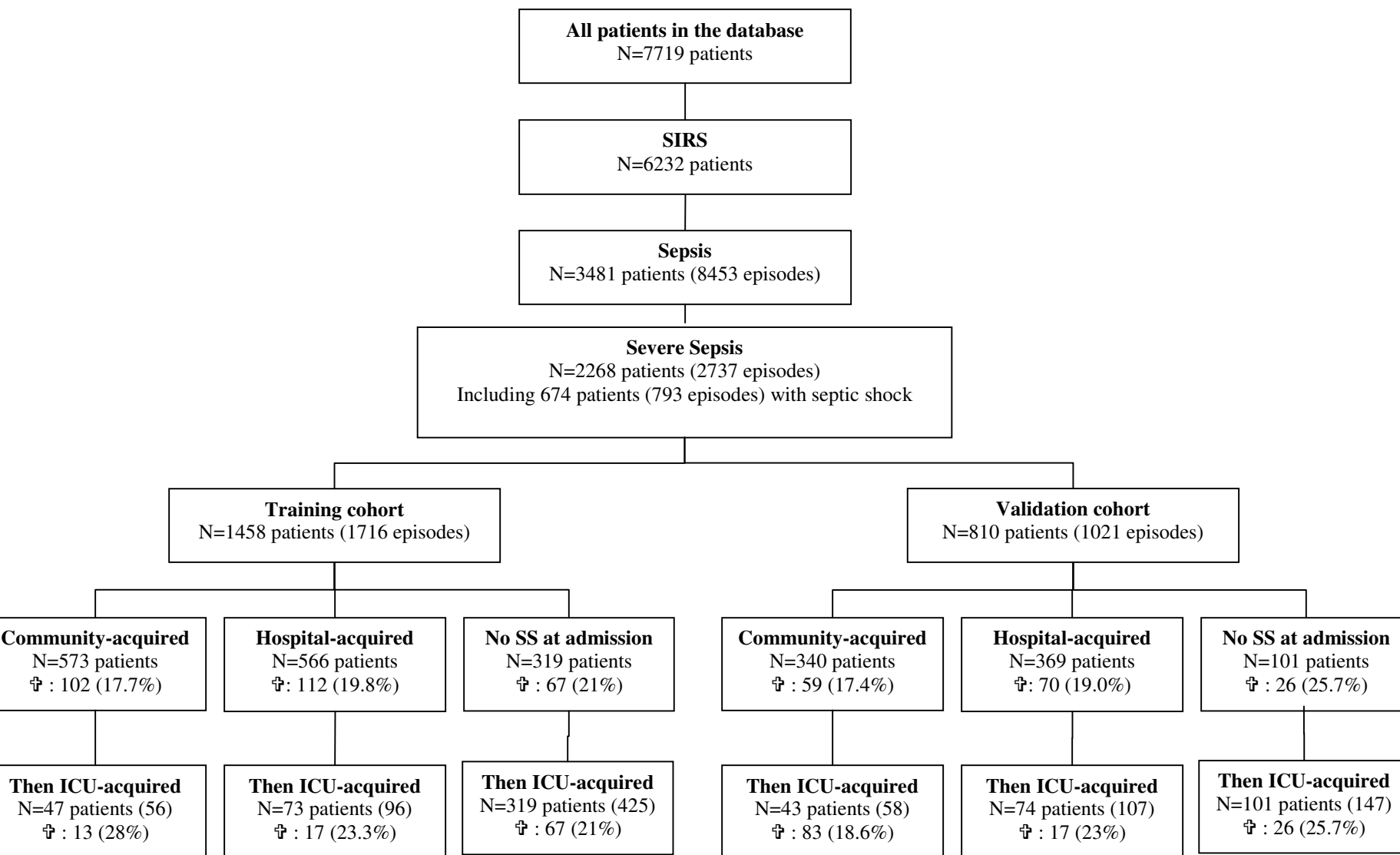
- compute the logit :  $\text{logit} = \text{sum} (' \text{Beta estimate}' \text{ multiplied by value of corresponding parameter})$
- compute the probability, using the logit :  $p = (\exp(\text{logit})) \text{ divided by } (1 + \exp(\text{logit}))$

**Description of additional data files (Word):**

The following additional data are available with the online version of this paper:

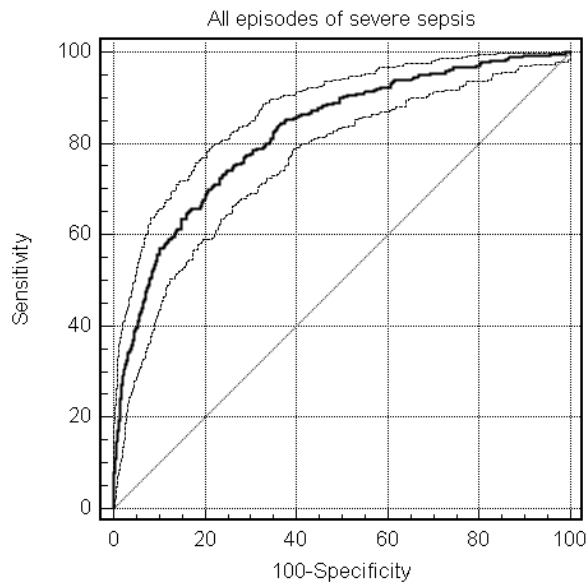
Additional Data File 1 represents a figure showing calibration curves of both training and validation cohorts.

Additional Data File 2 is a List of the Members of the Outcomerea Study Group: Scientific committee, Biostatistical and informatics expertise, Investigators and Clinical Research Assistants

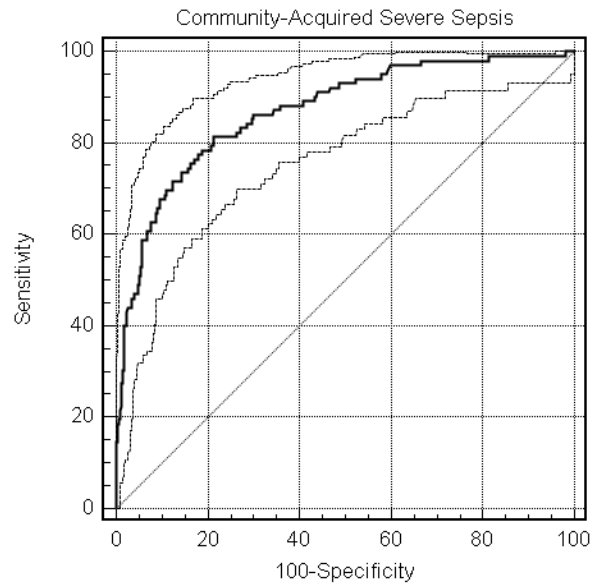


‡: mortality, N (%)

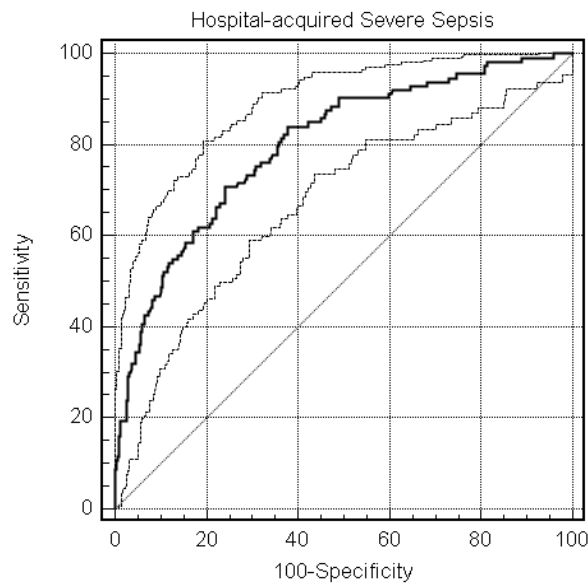
FIGURE 1



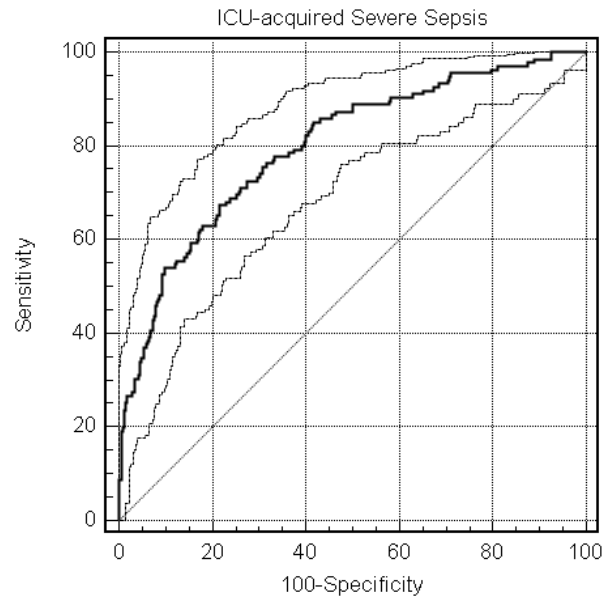
AUC-ROC: 0.824 [0.805-0.842] 95%CI  
Chi2HL: 8.6 ( $p=0.38$ )



AUC-ROC: 0.876 [0.840-0.897] 95%CI  
Chi2HL: 8.0 ( $p=0.43$ )

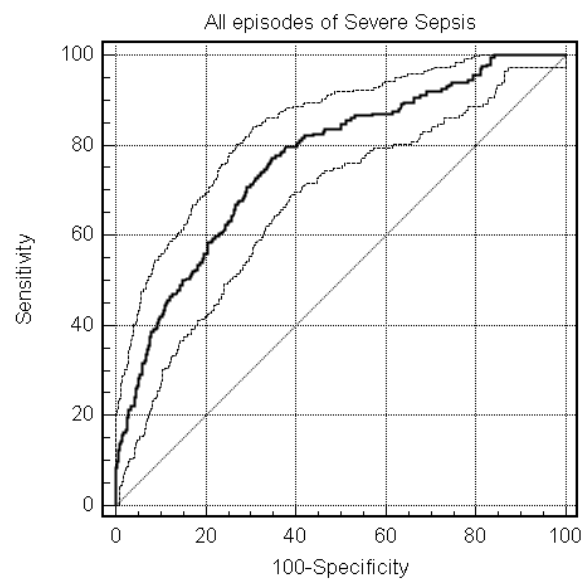


AUC-ROC: 0.800 [0.764-0.831] 95%CI  
Chi2HL: 5.2 ( $p=0.74$ )

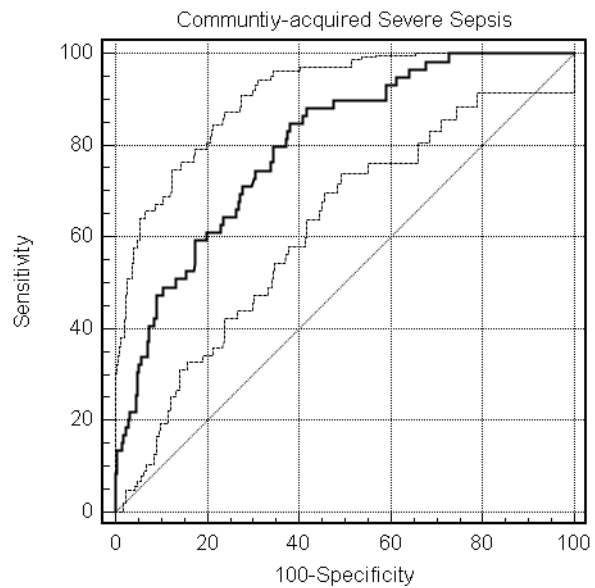


AUC-ROC: 0.800 [0.764-0.831] 95%CI  
Chi2HL: 12.1 ( $p=0.15$ )

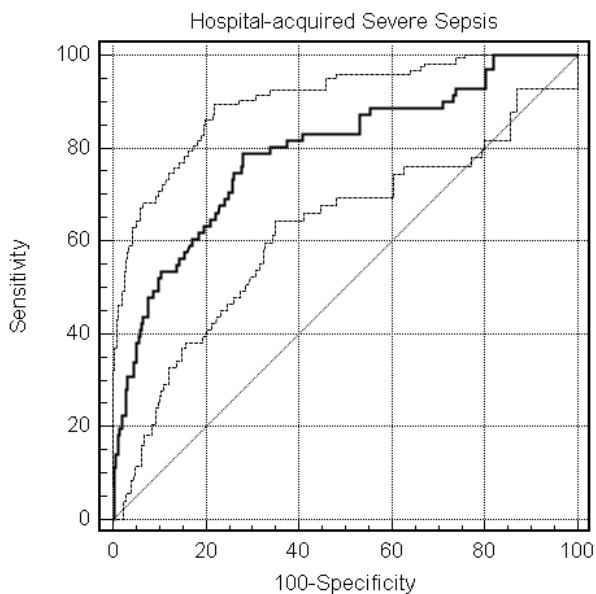
**FIGURE 2**



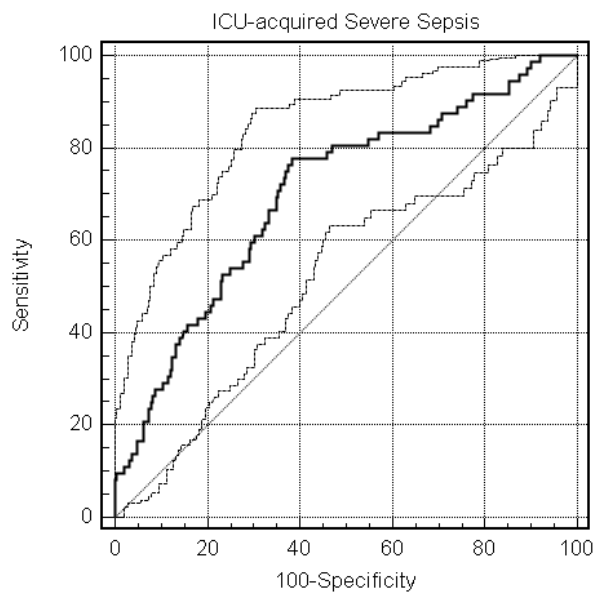
AUC-ROC: 0.763 [0.736-0.789] 95%CI  
Chi2HL: 15.3 ( $p=0.06$ )



AUC-ROC: 0.801 [0.754-0.841] 95%CI  
Chi2HL: 8.9 ( $p=0.35$ )



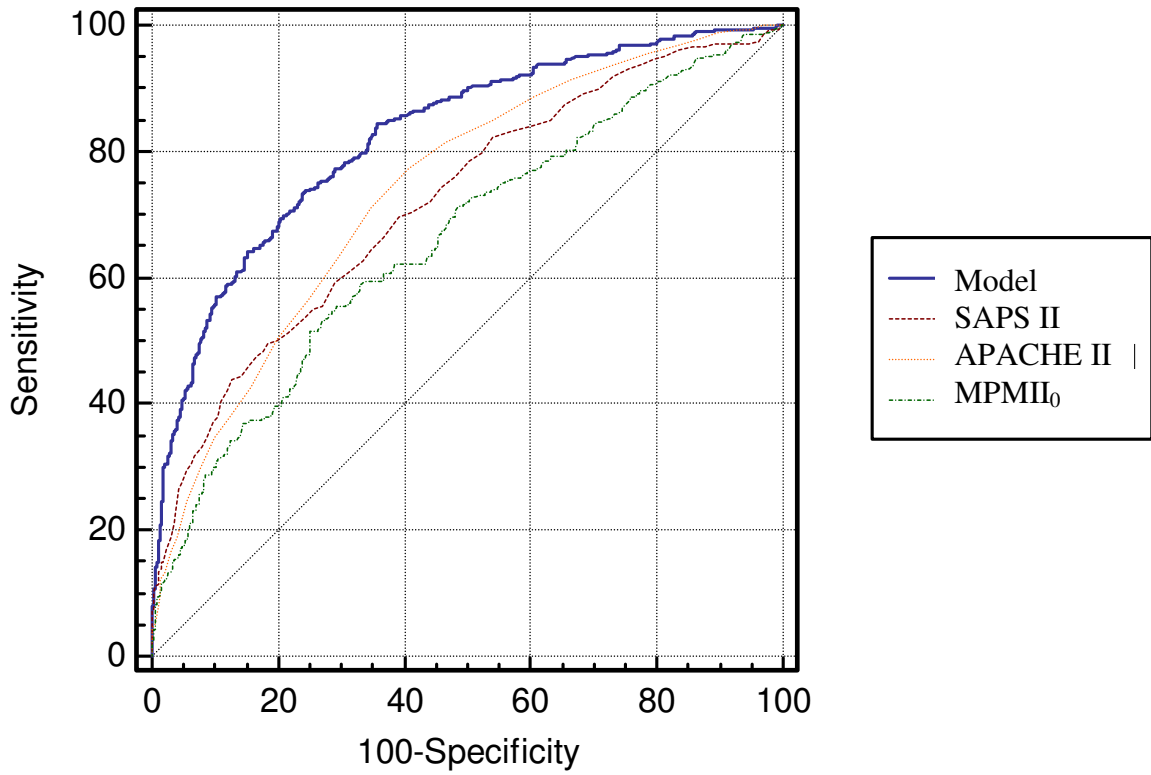
AUC-ROC: 0.783 [0.738-0.824] 95%CI  
Chi2HL: 15.3 ( $p=0.06$ )



AUC-ROC: 0.700 [0.646-0.750] 95%CI  
Chi2HL: 18.4 ( $p=0.02$ )

**FIGURE 3**





**FIGURE 4**

**Additional files provided with this submission:**

Additional file 1: timsit adrie adf 1.doc, 63K

<http://ccforum.com/imedia/1965961029277186/supp1.doc>

Additional file 2: timsit adrie adf 2.doc, 22K

<http://ccforum.com/imedia/1851319316277186/supp2.doc>