

Mutation associated with an autosomal dominant cone-rod dystrophy *CORD7* modifies *RIM1*-mediated modulation of voltage-dependent Ca^{2+} channels.

Takafumi Miki, Shigeki Kiyonaka, Yoshitsugu Uriu, Michel de Waard, Minoru Wakamori, Aaron Beedle, Kevin Campbell, Yasuo Mori

► **To cite this version:**

Takafumi Miki, Shigeki Kiyonaka, Yoshitsugu Uriu, Michel de Waard, Minoru Wakamori, et al.. Mutation associated with an autosomal dominant cone-rod dystrophy *CORD7* modifies *RIM1*-mediated modulation of voltage-dependent Ca^{2+} channels.. *Channels (Austin)*, 2007, 1 (3), pp.144-7. inserm-00378035

HAL Id: inserm-00378035

<https://www.hal.inserm.fr/inserm-00378035>

Submitted on 29 Apr 2009

HAL is a multi-disciplinary open access archive for the deposit and dissemination of scientific research documents, whether they are published or not. The documents may come from teaching and research institutions in France or abroad, or from public or private research centers.

L'archive ouverte pluridisciplinaire **HAL**, est destinée au dépôt et à la diffusion de documents scientifiques de niveau recherche, publiés ou non, émanant des établissements d'enseignement et de recherche français ou étrangers, des laboratoires publics ou privés.

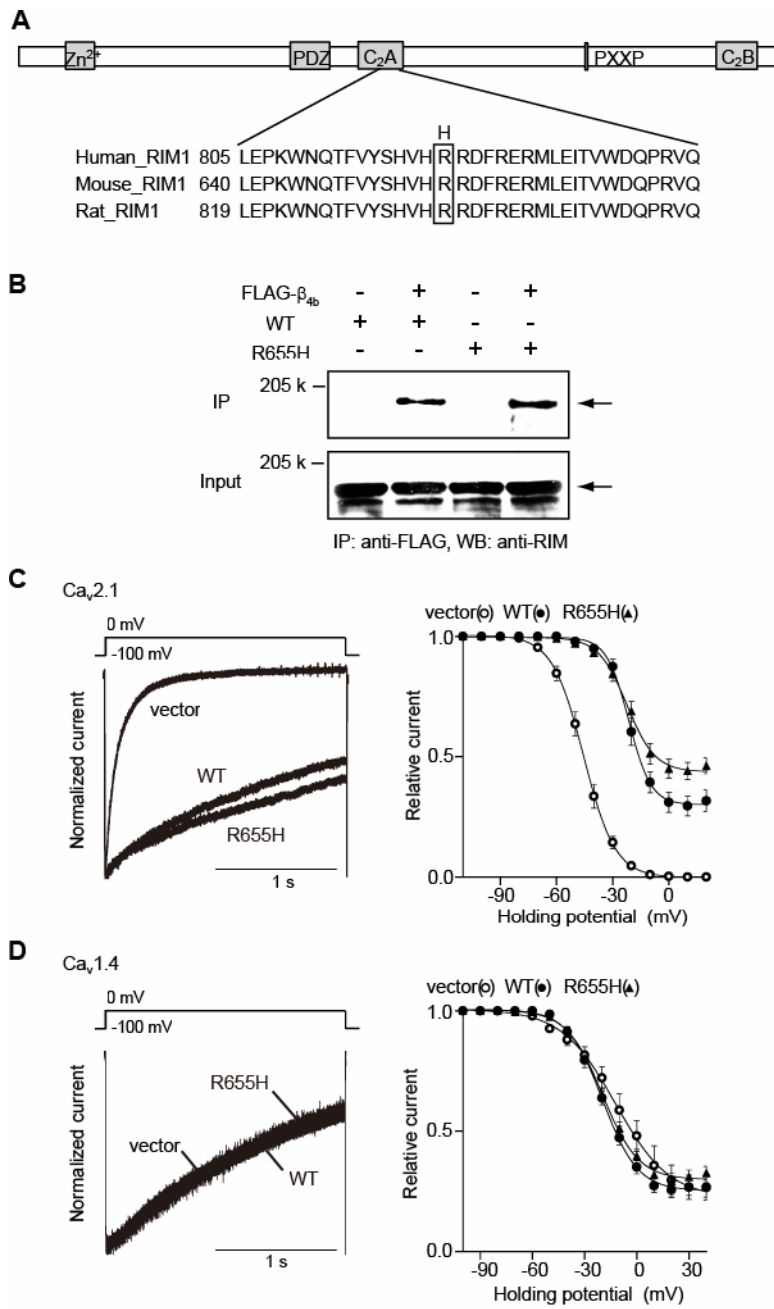


Figure 1

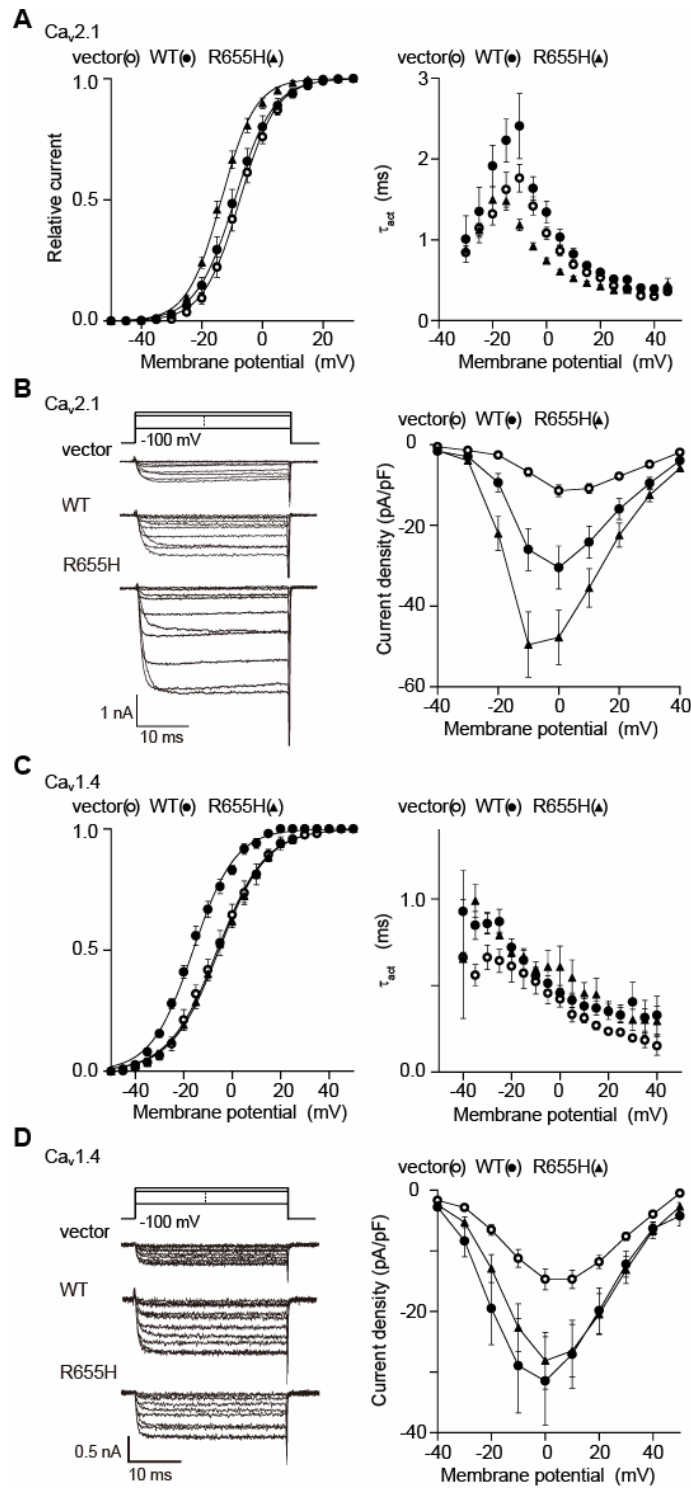


Figure 2

Table 1 Effects of mouse RIM1_{R655H} constructs on current density, activation, and inactivation of Cav2.1, or Cav1.4 channel ¹⁾²⁾.

Ca _v 2.1	Current density ³⁾		Activation parameters ⁴⁾				Inactivation parameters ⁵⁾					
	(pA/pF)	S.E.	V _{0.5}	S.E.	k	S.E.	a	S.E.	V _{0.5}	S.E.	k	S.E.
vector	-11.43	1.48	-7.19	1.24	4.47	1.26	1.00	0.00	-45.90	1.77	-7.53	0.27
RIM1	-30.45	5.34 *	-9.11	1.55	5.57	0.23	0.70	0.04 ***	-21.26	1.24 ***	-5.63	0.65
RIM1 _{R655H}	-47.73	6.71 *** #	-13.35	0.89 ** #	5.07	0.16	0.57	0.03 *** ##	-22.00	1.18 ***	-7.97	0.97 #

Ca _v 1.4	Current density ³⁾		Activation parameters ⁴⁾				Inactivation parameters ⁵⁾					
	(pA/pF)	S.E.	V _{0.5}	S.E.	k	S.E.	a	S.E.	V _{0.5}	S.E.	k	S.E.
vector	-14.71	1.71	-6.08	1.77	9.69	0.83	0.79	0.06	-10.50	3.40	-15.12	1.00
RIM1	-31.48	7.29 *	-16.16	1.02 ***	8.32	0.53	0.75	0.03	-19.54	1.78 *	-9.69	0.33 ***
RIM1 _{R655H}	-28.13	4.70 *	-5.41	0.87 ###	9.92	0.59	0.73	0.02	-18.00	1.56 *	-10.84	0.74 ***

1) **P* < 0.05, ***P* < 0.01, ****P* < 0.001 versus vector (ANOVA, Fisher's test).

2) #*P* < 0.05, ##*P* < 0.01, ###*P* < 0.001 versus RIM1 (ANOVA, Fisher's test).

3) Amplitude of Ba²⁺ currents evoked by depolarizing pulse to 0 mV from V_h of -100 mV are divided by capacitance.

4) V_{0.5} is the half-maximal activation voltage, and *k* is the slope factor.

5) *a* is the rate of inactivating component, V_{0.5} is the half-inactivation potential and *k* is the slope factor.