



**HAL**  
open science

## **Profiling of benzophenone derivatives using fish and human estrogen receptor-specific in vitro bioassays.**

José-Manuel Molina-Molina, Aurélie Escande, Arnaud Pillon, Elena Gomez, Farzad Pakdel, Vincent Cavaillès, Nicolás Olea, Sélim Aït-Aïssa, Patrick Balaguer

► **To cite this version:**

José-Manuel Molina-Molina, Aurélie Escande, Arnaud Pillon, Elena Gomez, Farzad Pakdel, et al.. Profiling of benzophenone derivatives using fish and human estrogen receptor-specific in vitro bioassays.. *Toxicology and Applied Pharmacology*, 2008, 232 (3), pp.384-95. 10.1016/j.taap.2008.07.017 . inserm-00319498

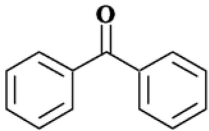
**HAL Id: inserm-00319498**

**<https://inserm.hal.science/inserm-00319498>**

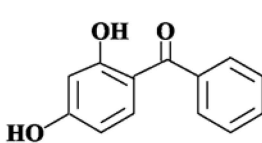
Submitted on 8 Sep 2008

**HAL** is a multi-disciplinary open access archive for the deposit and dissemination of scientific research documents, whether they are published or not. The documents may come from teaching and research institutions in France or abroad, or from public or private research centers.

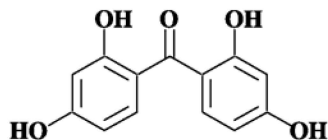
L'archive ouverte pluridisciplinaire **HAL**, est destinée au dépôt et à la diffusion de documents scientifiques de niveau recherche, publiés ou non, émanant des établissements d'enseignement et de recherche français ou étrangers, des laboratoires publics ou privés.



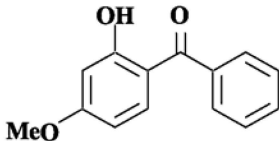
BP  
(benzophenone)



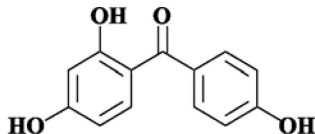
BP1  
(2,4-dihydroxybenzophenone)



BP2  
(2,2',4,4'-tetrahydroxybenzophenone)

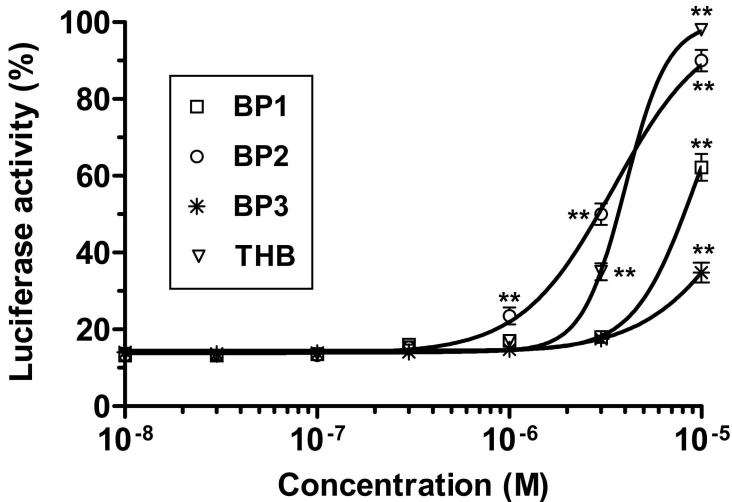


BP3  
(2-hydroxy-4-methoxybenzophenone)

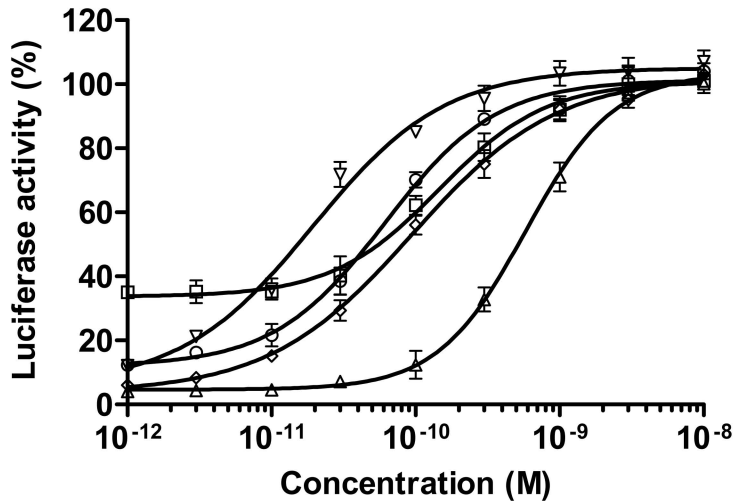


THB  
(2,4,4'-trihydroxybenzophenone)

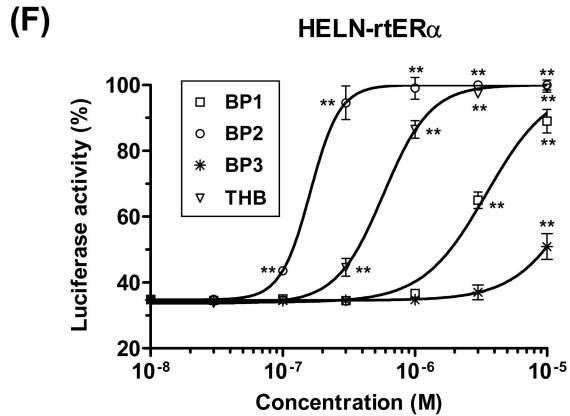
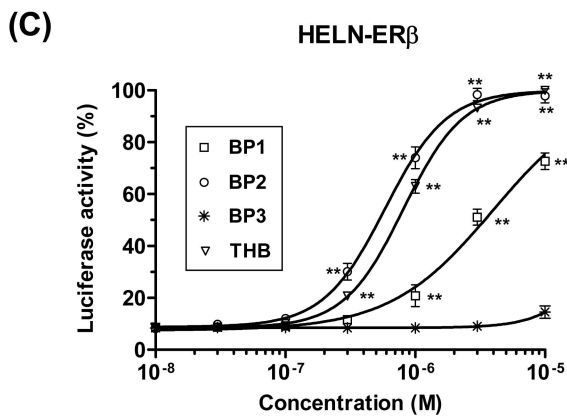
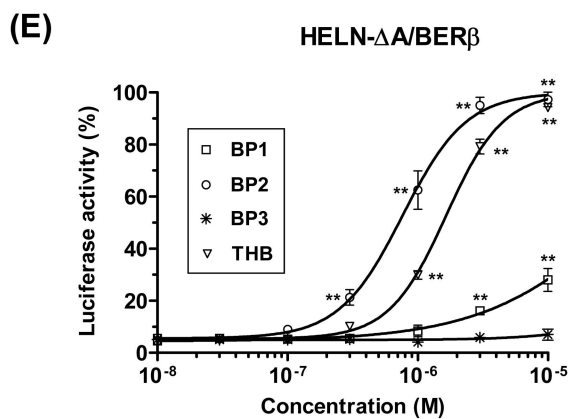
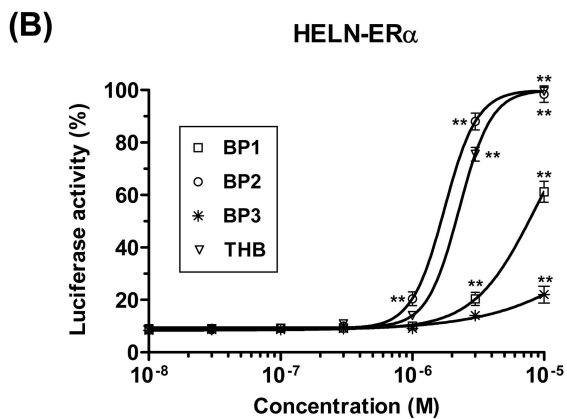
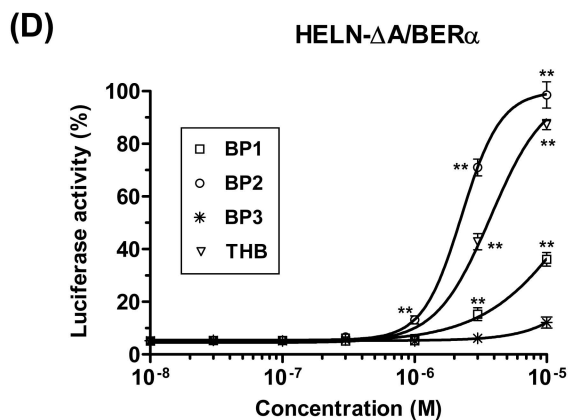
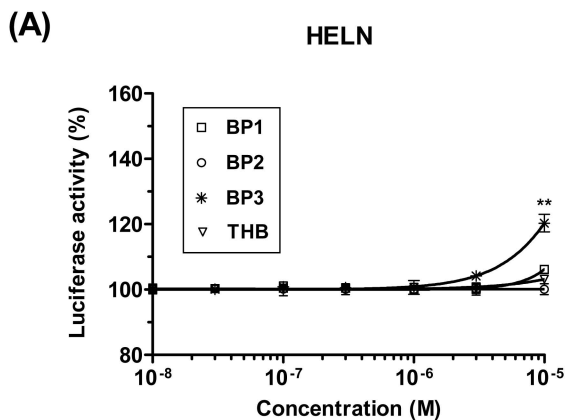
# MELN

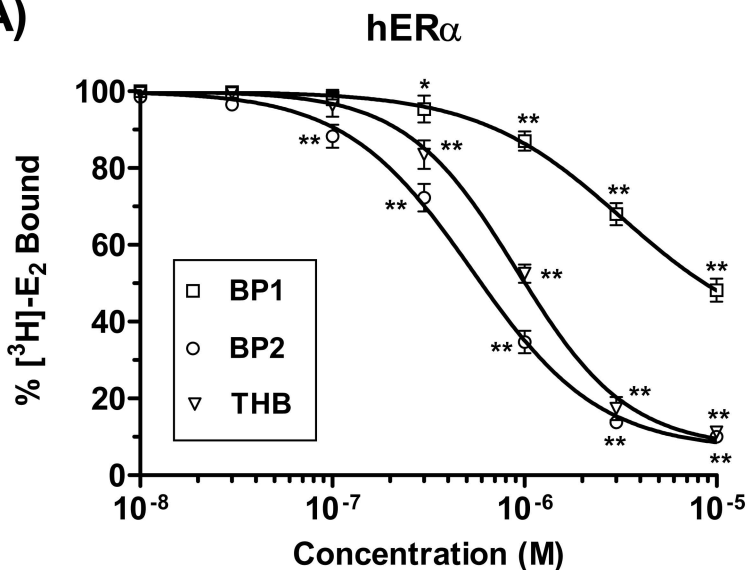
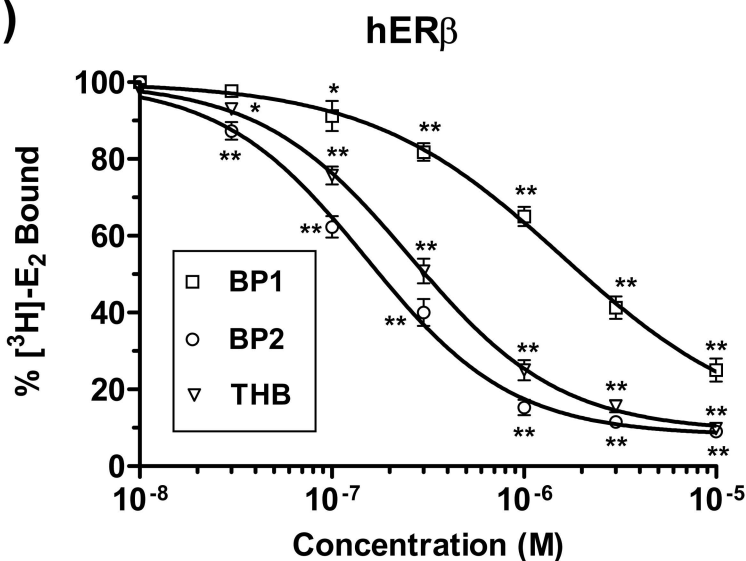
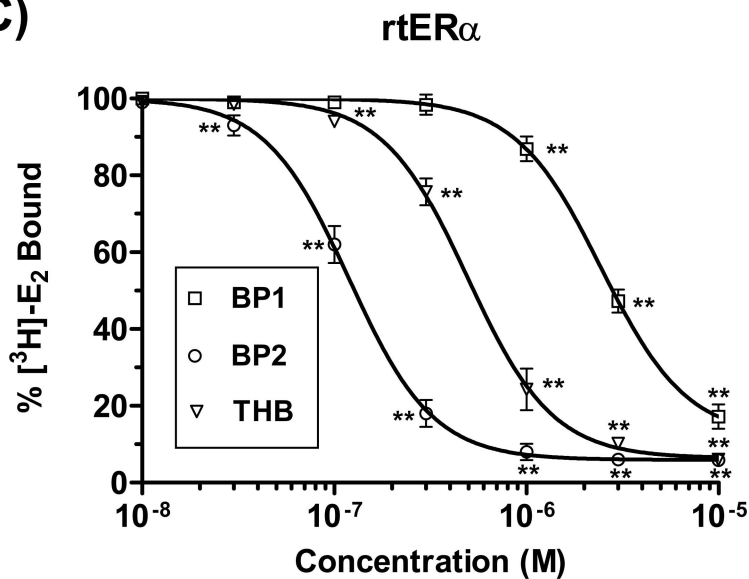


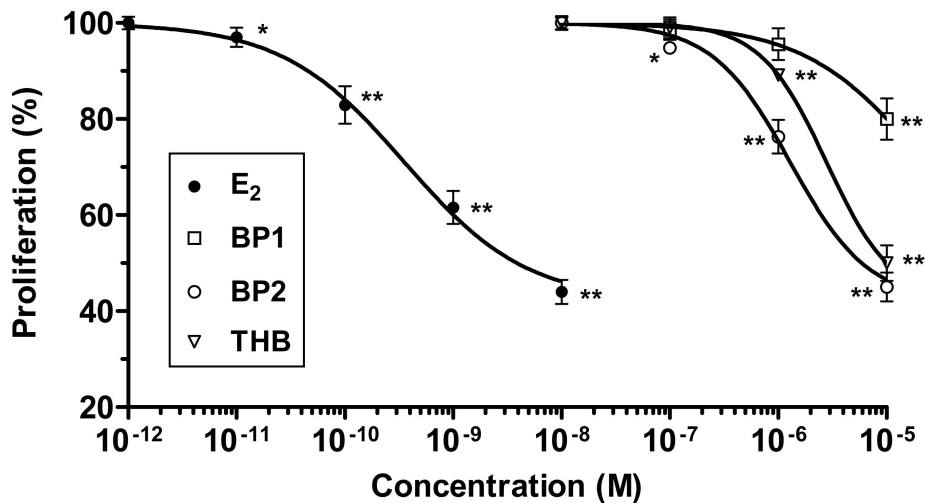
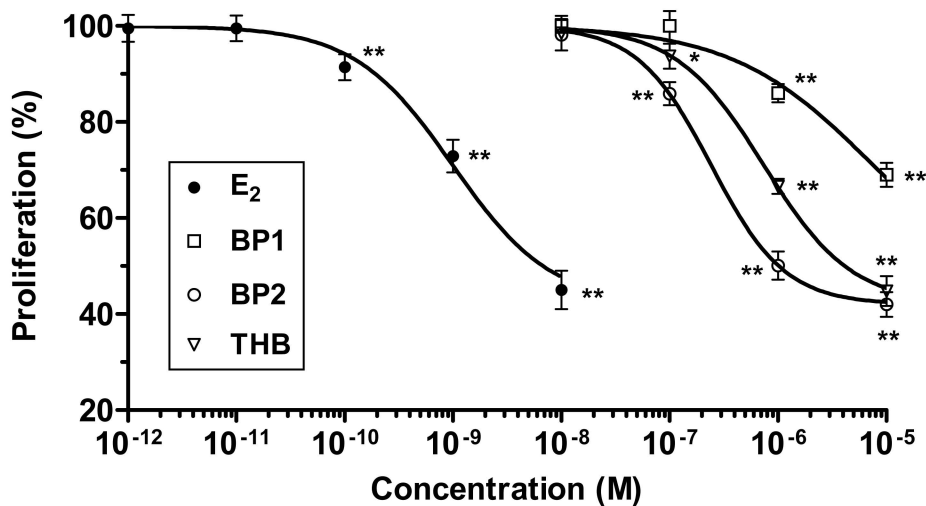
# 17 $\beta$ -Estradiol



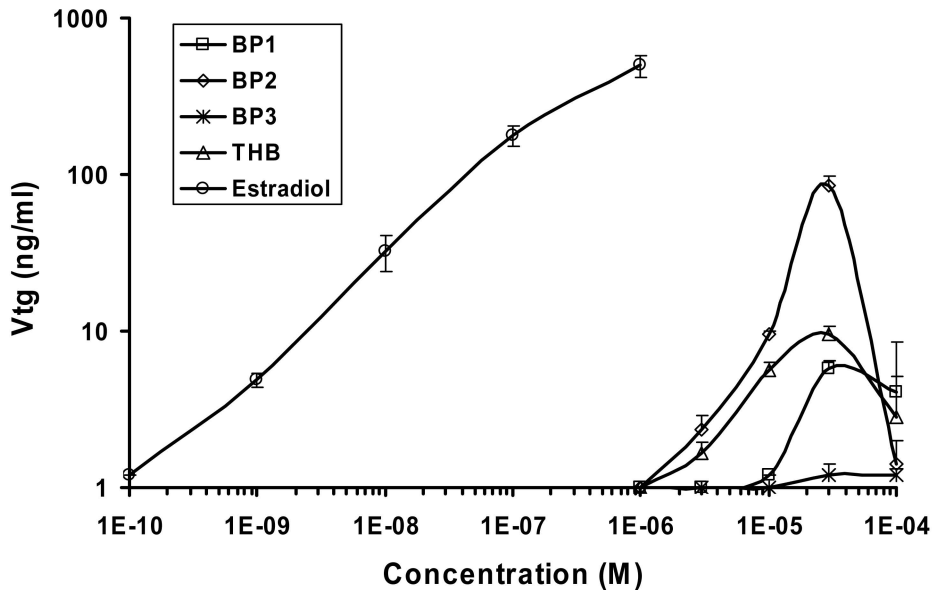
	EC <sub>50</sub> (nM)
▽ hER $\alpha$	0.019 $\pm$ 0.008
○ hER $\beta$	0.067 $\pm$ 0.007
◇ h $\Delta$ A/ER $\alpha$	0.093 $\pm$ 0.018
△ h $\Delta$ A/ER $\beta$	0.58 $\pm$ 0.03
□ rtER $\alpha$	0.19 $\pm$ 0.02



**(A)****(B)****(C)**

**(A)****HELN-ER $\alpha$** **(B)****HELN-ER $\beta$** 

# Rainbow trout hepatocytes





# PALM

