

Natural killer cells recruited into lymph nodes inhibit alloreactive T-cell activation through perforin-mediated killing of donor allogeneic dendritic cells.

Sophie Laffont, Cyril Seillet, John Ortaldo, Jérôme Coudert, Jean-Charles Guéry

► **To cite this version:**

Sophie Laffont, Cyril Seillet, John Ortaldo, Jérôme Coudert, Jean-Charles Guéry. Natural killer cells recruited into lymph nodes inhibit alloreactive T-cell activation through perforin-mediated killing of donor allogeneic dendritic cells.: NK-mediated allogeneic DC killing in lymph nodes. *Blood*, American Society of Hematology, 2008, 112 (3), pp.661-71. 10.1182/blood-2007-10-120089 . inserm-00306011

HAL Id: inserm-00306011

<https://www.hal.inserm.fr/inserm-00306011>

Submitted on 25 Jul 2008

HAL is a multi-disciplinary open access archive for the deposit and dissemination of scientific research documents, whether they are published or not. The documents may come from teaching and research institutions in France or abroad, or from public or private research centers.

L'archive ouverte pluridisciplinaire **HAL**, est destinée au dépôt et à la diffusion de documents scientifiques de niveau recherche, publiés ou non, émanant des établissements d'enseignement et de recherche français ou étrangers, des laboratoires publics ou privés.

Natural killer cells recruited into lymph nodes inhibit alloreactive T cell activation through perforin-mediated killing of donor allogeneic dendritic cells.

Short title: NK-mediated allogeneic DC killing in lymph nodes

Sophie Laffont*^{†1}, Cyril Seillet*^{†1}, John Ortaldo[§], Jérôme D. Coudert*^{†1}, and Jean-Charles Guéry*^{†2}

*INSERM, U563, Centre de Physiopathologie de Toulouse Purpan, Toulouse, F-31300 France; [†]Université Paul-Sabatier, Toulouse, F-31400 France; [§]Laboratory of Experimental Immunology, National Cancer Institute-Frederick, Center for Cancer Research, Frederick, MD 21702, USA.

This work was supported by a grant from Etablissement Français des Greffes and by institutional grants from INSERM.

¹SL, CS and JDC were supported by fellowships from the Ministère de l'Éducation Nationale de la Recherche et des Technologies, and also from l'Association pour la Recherche sur le Cancer (ARC) for SL and from la Fondation pour la Recherche Médicale (FRM) for JDC.

SL present address: Sir William Dunn School of Pathology, University of Oxford, United Kingdom. JDC present address: Centre for Experimental Immunology, Lions Eye Institute, Nedlands, Western Australia 6009, Australia.

²Address correspondence to Dr. Jean-Charles Guéry. INSERM U563, CHU Purpan, Place du Dr Baylac, BP 3028, 31 024 Toulouse Cedex 3 France. Tel. 33-5 62 74 83 78, Fax. 33-5 62 74 45 58

e-mail: Jean-Charles.Guery@toulouse.inserm.fr

Total word counts : 4969

Abstract word counts: 197

Reference count: 40

Scientific heading: Immunobiology

Summary

Natural killer (NK) cell alloreactivity is exploited in bone marrow transplantation to improve clinical outcome. Likewise, in solid organ transplantation, it has been recently shown that recipient NK cells may limit alloreactive T cell responses through their capacity to prevent the persistence of graft-derived allogeneic dendritic cells (DCs). In a model of CD4⁺ T cell mediated allogeneic skin graft rejection, we show that the absence of host NK cell alloreactivity was characterized by enhanced expansion of alloreactive effector T lymphocytes, including Th2 cells, and massive eosinophilic infiltrates in the rejected tissues. In CD8⁺ T cell-deficient C57BL/6 (H-2^b) recipients injected with allogeneic BALB/c (H-2^d) DCs, we demonstrated that NK cells expressing the H-2D^d-specific Ly49D activating receptor were implicated in the regulation of alloreactive CD4⁺ T cell responses. Moreover, we showed that Ly49D⁺ CD127⁺ NK cells were recruited within DC draining lymph nodes and rapidly eliminated allogeneic H-2^d DCs through the perforin pathway. In normal mice, we further demonstrated that NK cells by quickly eliminating allogeneic DCs strongly inhibited alloreactive CD8⁺ T cell responses. Thus, NK cells act as early regulators of alloreactive T cell priming in allotransplantation through their capacity to kill allogeneic DCs in draining lymph nodes.

Supprimé :

Introduction

NK cells are a major component of the innate immune system and are capable of killing target cells without prior immunization ¹. Activation of NK cells results from the balance between the engagement of complex families of inhibitory and activatory receptors specific for MHC I molecules and various others ligands ^{2,3}. Inhibitory receptors encompass several families of cell surface molecules, such as Ly49 and CD94/NKG2 receptors in mouse, that recognize self-MHC class Ia molecules and transmit intracellular signals preventing NK cell activation and target cell lysis ^{2,3}. Activating receptors recognize MHC class I-like molecules and other undefined ligands and trigger lysis and cytokine production ³. Engagement of an excess of inhibitory receptors aborts the activating signaling cascades. Consequently in allotransplantation settings, interaction with fully mismatched allogeneic cells, lacking self MHC I molecules, leads to unopposed activating signals and NK cell activation characterized by target cell killing and cytokine release ⁴.

Their ability to distinguish allogeneic cells from self and their potent cytolytic effector function make NK cells relevant to allogeneic bone marrow transplantation ⁵. However, their role in the rejection of organ grafts has been difficult to highlight and is still a matter of debate ⁶. While some studies have suggested that NK cells do not participate to rejection of solid organ transplants ^{7,8}, it has been recently shown that, in certain models, NK cells could function as potent effector cells to promote allograft rejection ⁹ or to trigger allograft vasculopathy ¹⁰. A dominant role of NK cells in fully allogeneic cardiac transplant rejection was reported in CD28-deficient recipients with impaired T-cell costimulatory functions. This effect of NK cells was attributed to their capacity to promote allogeneic DC maturation and subsequent alloreactive T cell activation, overcoming the CD28-deficiency ^{9,11}. This hypothesis, however, has been recently challenged by the demonstration, that in normal mice,

host NK cells were implicated in the induction of islet allograft tolerance through costimulation blockade¹². Although the mechanisms were not defined, it was shown that NK cell-derived perforin (pfp) was required for tolerance induction¹². Likewise, a prominent role for NK cells has been recently reported in a skin-graft model of transplantation tolerance induced by co-stimulator blockade¹³. Interestingly, it was shown that host NK cells were able to kill graft-derived APCs, including DCs, thereby preventing excessive priming of alloreactive T cells in lymphoid and non-lymphoid tissues. These data indicate that in the absence of NK cells, allogeneic DCs can persist in the host and enhance T cell priming thereby hindering the induction of tolerance to these highly immunogenic transplants¹³. This observation is in agreement with our previous works showing that recognition of allogeneic DCs by host NK cells strongly affected the magnitude of allospecific CD4⁺ T cell responses as well as their cytokine secretion profiles¹⁴.

Altogether these observations suggested that host NK cells, through their ability to recognize and kill cells expressing allogeneic MHC class I molecules, might limit the persistence of donor-derived DCs, thereby inhibiting alloreactive T cell priming through the direct pathway^{13,14}. As we recently showed that host allospecific CTLs can rapidly eliminate semi-allogeneic DCs in lymph nodes¹⁵, we have used CD8 α -deficient mice as recipients¹⁴. In this model, we examined the site and the mechanism of allogeneic DC elimination by host NK cells, and its consequences on alloreactive CD4⁺ and CD8⁺ T cell responses.

Materials and Methods

Mice

BALB/c (H-2^d) and C57BL/6 (B6) (H-2^b) mice were purchased from Centre d'Élevage R. Janvier (Le Genest St Isle, France). $\beta_2m^{-/-}$ mice on the BALB/c background were generated as previously described¹⁴. B6 CD8 $\alpha^{-/-}$, B6 perforin-deficient (pfp $^{-/-}$) and B6 IL-12R $\beta_2^{-/-}$ mice were initially obtained from The Jackson Laboratory (Bar Harbor, ME, United States of America). B6 CD8 $\alpha^{-/-}$, (BALB/c x B6)F1 (CB6 F1), B6 pfp $^{-/-}$, B6 CD8 $\alpha^{-/-}$ pfp $^{-/-}$, B6 IL-12R $\beta_2^{-/-}$ and BALB/c $\beta_2m^{-/-}$ mice were bred and maintained in our specific pathogen-free animal facility.

Supprimé : and

Supprimé :

Supprimé : C57BL/

Supprimé : and

In vivo mAb treatment

Supprimé : ¶

For *in vivo* NK cell-depletion, the anti-NK1.1 PK136 mouse IgG2a mAb (HB 191, American Type Culture Collection (ATCC), Manassas, VA, USA) was purified from ascites fluid by caprylic acid precipitation. Mice were injected intraperitoneally with 200 μ g of PK136 the day before and the day of immunization. For specific NK cell subset depletion, 100 μ g of the anti-Ly49D 4E5 rat IgG2a mAb or 100 μ g of anti-Ly49A/D 12A8 rat IgG2a mAb were injected at day -1 and 0 of the experiment. For *in vivo* CD8⁺ T cell depletion, mice were injected with anti-CD8 α 53-6.72 rat IgG2a (TIB-105, ATCC) as previously shown¹⁵. For L-selectin blockade experiments, mice received 100 μ g of anti-CD62L monoclonal antibody Mel-14 three hours before DC injection.

Supprimé :

Supprimé : the

Skin grafting and histological studies

Skin grafts were performed as previously described¹⁴. For histological analysis, skin grafts were fixed with formol for 24 hours at 37°C and then tissue sections were stained with

hematoxylin and eosin, after paraffin embedding. The percentage of eosinophils among infiltrating mononuclear cells was determined in at least three fields per graft as previously shown¹⁵.

Supprimé : Eosinophils are easily identified by their plurilobed nuclei and the intense staining of their cytoplasm by eosin

Bone-marrow derived-dendritic cells

Mouse bone marrow cells were cultured in complete culture medium at 2×10^6 in bacteriological petri dish (Greiner Bio-one, Frickenhausen, Germany) supplemented with supernatant of J558L cells transfected with a plasmid expressing the murine granulocyte macrophage-colony stimulating factor (GM-CSF). The method used here was adapted from a protocol previously described¹⁶. DC preparations (> 80% of CD11c^{POS} cells) were used at day 8-9 of culture to immunize mice subcutaneously into the hind footpads.

Supprimé : The dendritic cell (DC)DC preparations

Supprimé : ,

Supprimé :

Supprimé : ,

Supprimé : For T cell assays, 0.5×10^6 DCs were injected in order to perform T cell assay, while 1.5×10^6 DCs of each mouse strain were injected for DC migration studies.¶

T cell assays

CD4⁺ T cells from popliteal and inguinal lymph nodes of DC-immunized mice or inguinal and axillary lymph nodes draining the skin graft were purified by negative selection as previously described¹⁵. CD4⁺ T cells (purity > 90%) were cultured with irradiated allogeneic splenocytes in HL-1 synthetic medium (Cambrex, Walkersville, MD). Supernatants were collected after 72 h for cytokine analysis. IFN- γ and IL-4 were quantified by two sites sandwich ELISA as previously described¹⁷. For T cell proliferation assays, cell cultures were pulsed the last 8 hours of culture with 1 μ Ci (37 KBq) [³H]TdR (40 Ci/nmol; the Radiochemical Centre, Amersham, United Kingdom). Incorporation of [³H]TdR was measured by an MicroBeta TriLux luminescence counter (Perkin Elmer, Waltham, MA, USA).

Supprimé : seeded in MLC

Flow cytometry

For the analysis of intracellular cytokine synthesis, CD4⁺ T cells were cultured in complete medium with T-cell depleted allogeneic BALB/c splenocytes for 8 hours in presence of anti-CD28 mAb (3 µg/ml, e-Bioscience, San Diego, CA) as previously described¹⁵. Brefeldin A (Sigma-Aldrich) was added at 10 µg/ml for the last 4 h of culture. The following mAbs purchased from Pharmingen (San Diego, CA) were used: anti-CD4, anti-CD69 and anti-IL-4 (11B11 clone). For NK cell phenotyping, the following fluorochrome-conjugated mAbs (Pharmingen) were used: anti-TCRβ, anti-NK1.1, anti-DX5, anti-CD11b, anti-CD69, anti-CD127 and anti-Ly49D (4E5 clone). Intracellular staining for IFN-γ was performed on *ex vivo* isolated lymph node cells as described elsewhere¹⁸.

Supprimé : M

DC migration assay

For *in vivo* cytotoxic assay, B6 and BALB/c DCs were labeled with either 1 µM or 10 µM of carboxyfluorescein diacetate succinimidyl ester (CFSE; Molecular Probe, Leiden, The Netherlands) as described¹⁵ and then injected subcutaneously into the hind footpads. At indicated times, draining popliteal lymph node were removed and digested with collagenase IV (Sigma-Aldrich) at 400 U/ml for 30 min at 37 °C. The following fluorochrome-conjugated monoclonal antibodies (mAbs) were used: anti-CD11c (PharMingen, San Diego, CA) and anti-MHC class II (e-Bioscience, San Diego, CA). Cells were gated on CD11c^{pos}, MHC II^{high} and CFSE^{pos} cells that represent around 2-4 % of CD11c^{pos} MHC II^{high} DCs in lymph nodes. Percentages of allogeneic target BALB/c cells were normalized to control syngeneic B6 cells. All cytometry data were collected on a FACSCalibur (Becton Dickinson, Mountain View, CA) and analyzed using the FlowJo software (Tree Star, Olten, Switzerland).

Supprimé : containing NaN₃ 0.1 %, EDTA 5 mM, FCS 1 %, normal mouse serum 3 %, normal rat serum 3 %, 5 µg/ml 2.4G2 in PBS.

Supprimé : CFSE^{high}

Supprimé : CFSE^{low}

Confocal microscopy

DCs from indicated origins were labeled with 10 μ M of CFSE or 10 μ M of (5-(and-6-
)-(4-chloromethyl)benzoyl)amino tetramethylrhodamine (CMTMR; Molecular probes) as
indicated by manufacturer. Depending on the experiment, CMTMR-labeled BALB/c cells
alone or a mixture of 1×10^6 CFSE-labeled BALB/c DCs and 1×10^6 CMTMR-labeled B6
DCs were injected subcutaneously into the hind footpads of recipient mice. At indicated times
after injection, popliteal draining lymph nodes were harvested and prepared for confocal
microscopy analysis as previously described¹⁵. Cryostat sections (10 μ m) were stained with
unconjugated anti-peripheral lymph node addressin (PNAd) mAb (Meca-79, PharMingen)
and anti-B220 mAb (RA36B2, Pharmingen). PNAd and B220 were revealed with
AlexaFluor647 goat anti-rat Ig antibodies (Molecular Probes). In some experiments, frozen
sections of lymph nodes were fixed with acetone, and stained with goat anti-NKp46
antibodies (R&D Systems, Mineapolis, MN, USA), followed by donkey anti-goat antibodies
conjugated to Alexa 488 or Alexa 633 (Invitrogen, Oregon, USA). Sections were analyzed by
using a LSM 510 confocal microscope and acquisition system (Carl Zeiss, Jena, Germany)
equipped with a 10X/1.4 objective lens. Images were then processed with Adobe Photoshop
CS2 software version 8.0.1 (Adobe systems, San Jose, CA)

Supprimé : (

Supprimé : G(K+L)

Statistical analysis

Differences between variables were evaluated with by the Student's *t*-test using Prism
GraphPad software (San diego, CA).

Supprimé : .

Supprimé : ¶

Supprimé : ¶
¶

Supprimé : s

Results

Effect of host NK cell activation on allospecific CD4⁺ T cell development and skin allograft rejection *in vivo*

We previously showed that activation of host NK cells by allogeneic DCs immunization or skin graft transplantation, in recipient mice lacking CD8⁺ T cells, resulted in diminished allospecific Th cell responses associated with the development of effector Th cells producing IFN- γ but no type-2 cytokines. NK cell elimination was sufficient to restore strong alloreactive CD4⁺ T cell priming and to promote Th2 cell development¹⁴. A typical experiment is presented in Figure 1, where CD8-deficient B6 mice, depleted or not of NK cells by anti-NK1.1 treatment, were grafted with fully allogeneic BALB/c skin. At day 8, CD4⁺ T cells were purified from draining lymph nodes and stimulated *in vitro* with allogeneic BALB/c APCs. In agreement with previous works¹⁴, CD4⁺ T cells from NK-depleted mice proliferated vigorously and produced large amounts of IFN- γ and IL-4. By contrast, in presence of NK cells, priming with allogeneic skin graft induced a modest proliferative response of alloreactive CD4⁺ T cells that produced some IFN- γ but no IL-4 (Figure 1B, C). Histological analysis of rejected allogeneic BALB/c skin grafts showed massive eosinophil infiltrates in NK cell-depleted mice confirming the Th2-bias of the alloreactive response (Figure 1D). As a control to prevent NK cell activation by donor allograft, we used (BALB/c x B6)F1 mice that express recipient MHC I molecules as skin graft donors. As expected, in this combination skin graft rejection was associated with strong tissue eosinophilia (Figure 1D) and alloreactive Th2 cell priming (data not shown). Taken together, our data show that in absence of NK cell activation, CD4⁺ T cell mediated graft rejection is characterized by enhanced expansion of alloreactive effector T lymphocytes, including Th2 cells probably responsible for the massive eosinophilic infiltration in rejected skin allografts.

Ly49D⁺ NK cells regulate alloreactive CD4⁺ T cell priming and polarization in response to allogeneic H-2^d DCs

We next thought to determine the subsets of host NK cells that are required for the regulation of H-2^d-specific CD4⁺ T cell responses in CD8-deficient B6. As alloreactive T cell response in this model of skin graft rejection is likely to be induced by donor DCs that migrate to the draining lymph nodes¹⁹, CD8-deficient B6 mice were immunized with allogeneic BM-DCs from BALB/c mice. In this experimental setting, NK cell depletion induced alloreactive CD4⁺ T cell priming in allogeneic DC-immunized but not naive mice (Figure S1). As it has been reported in H-2^d bone marrow transplant rejection²⁰, we hypothesized that the regulatory role of NK cells was mediated by a subset of NK cells expressing Ly49D activating receptor specific for H-2D^d MHC class I molecules expressed on allogeneic DCs^{21,22}. As shown in Figure 2A, administration of anti-Ly49A/D (12A8) mAb enhanced H-2^d-specific proliferative CD4⁺ T cell response and induced the development of effector Th cells producing not only IFN- γ , but also IL-4. In contrast, allogeneic DC immunization of control B6 CD8^{-/-} mice induced a moderate priming of alloreactive CD4⁺ T cell responses. This was confirmed by analyzing the frequency of H-2^d-specific Th2 cells by intracellular cytokine staining. IL-4 producing CD69⁺ CD4⁺ T cells specific for H-2^d MHC class II molecules were detected at similar frequency in anti-NK.1.1 and anti-Ly49D/A-treated mice and represented around 1% of total CD4⁺ T lymphocytes. The frequency of IL-4⁺ CD4⁺ T cells was below 0.02% when T cells were cultured with syngeneic APCs (not shown). In NK sufficient mice immunized with allogeneic DCs (Figure 2B), the frequency of IL-4-producing CD4⁺ T cells was either very low (< 0.2%) or undetectable (not shown). Since 12A8 mAb depletes in addition to Ly49D⁺ cells a population of NK cells expressing the Ly49A inhibitory receptor, we evaluated the effect of selective depletion of Ly49D using the 4E5 mAb. In the spleen and lymph nodes of 12A8- or 4E5-treated mice, we noticed a slight

Supprimé : ,

Supprimé : normal

reduction of NK cell numbers and a complete disappearance of NK cells expressing high levels of Ly49D (Figure S2). This selective elimination of Ly49D-bearing NK cells had almost similar effect as complete NK cell depletion, by restoring strong alloreactive CD4⁺ T cell priming and expansion of IFN- γ and IL-4-producing effector Th cells (Figure 2C). We also evaluated the effect of Ly49D⁺ NK cell-depletion on CD4⁺ T cell responses induced in B6 CD8^{-/-} mice immunized with MHC class I-deficient BALB/c DCs. As shown in Figure 2D, β 2m-deficient BALB/c DCs were unable to prime alloreactive CD4⁺ T cell responses in both control and anti-Ly49D-treated mice. By contrast, when recipient mice were depleted of their whole NK cell compartment using anti-NK1.1 mAb, a potent alloreactive H-2^d-specific CD4⁺ T cell responses developed characterized by a strong production of type-1 and type-2 effector cytokines (Figure 2D). Thus, in 4E5-treated mice, the remaining Ly49D⁻ NK cells were still efficient in inhibiting alloreactive CD4⁺ T cell priming by allogeneic β 2m-deficient BALB/c DCs. Similar results were obtained using anti-Ly49D/A mAb 12A8 (not shown). Altogether, these data indicate that the failure of allogeneic H-2^d DCs to efficiently prime alloreactive CD4 T cells is a consequence of the activation of H-2D^d-specific Ly49D⁺ NK cells. These results also rule out any role for NKT cells as Ly49D molecules have indeed been reported to be exclusively expressed on NK cells²³⁻²⁵.

Supprimé :

Increased recruitment and activation of host NK cells in allogeneic DC draining lymph nodes

Having shown that Ly49D⁺ NK cells regulate CD4⁺ T cell priming in response to allogeneic BALB/c DCs, we next examined the recruitment and activation status of host NK cells in DC-draining lymph nodes 24 hours after immunization. As shown in Figure 3A, the frequency of NK1.1⁺TCR β ⁻ NK cells was increased up to six-fold in allogeneic DC-draining lymph nodes as compared to control lymph nodes from non-immunized mice. Immunization

with syngeneic B6 DCs also induced the recruitment of NK cells to draining lymph nodes, although to a lesser extent than fully allogeneic BALB/c DCs. Lymph node cellularity was equivalently enhanced in mice primed with syngeneic or allogeneic BALB/c DCs with similar proportion of T and B cells (not shown). NK cell recruitment was associated with an increased frequency of NK cells expressing the activation markers CD69 (Figure 3B) or CD11b (Figure 3C) in allogeneic DC-draining lymph nodes as compared to lymph nodes from control or syngeneic DC-immunized mice. Likewise, the frequency of IFN- γ -secreting CD69⁺NK1.1⁺TCR β ⁻ NK cells increased from 0.2% to 3-4% at 24 hours after immunization (Figure 3D). These data collectively demonstrate that upon immunization with allogeneic DCs, NK cells harboring an activated phenotype are rapidly recruited to draining lymph nodes.

Supprimé : as compared to

Host Ly49D⁺ NK cells are responsible for allogeneic DC elimination in vivo

Thereafter, we investigated whether this rapid influx of alloreactive NK cells could have an impact on allogeneic DC elimination in draining lymph nodes. We therefore monitored the accumulation and/or persistence of BALB/c DCs in the recipient lymph nodes. To this end, B6 CD8^{-/-} mice were immunized s.c. with equal numbers of syngeneic B6 and allogeneic BALB/c DCs respectively labeled with low and high concentrations of CFSE dye. Histograms in Figure 4A are representative of CFSE-labeled DC profiles obtained at 48 hours from untreated and anti-NK1.1 treated B6 CD8^{-/-} mice. As shown in Figure 4B, depletion of host NK cells was associated with an increase in allogeneic DC numbers in draining lymph nodes from 48 to 72 hours after immunization. Next, to determine whether Ly49D⁺ NK cells were implicated in the inhibition of allogeneic DC persistence, CD8-deficient B6 mice were treated or not with anti-NK.1.1 or anti-Ly49D mAb and then immunized with the same DC mixture as before. We found that allogeneic DC persistence was similarly increased in mice

depleted of NK1.1⁺ or Ly49D⁺ NK cells suggesting that allogeneic DC elimination was mediated by a subset of NK cells bearing the H-2D^d-specific Ly49D activating receptor (Figure 4C and Figure S3).

Then, in order to directly visualize allogeneic DC persistence in draining lymph nodes in absence of host NK cells, we performed confocal microscopy analysis. B6 CD8^{-/-} mice were injected with BALB/c DCs labeled with CMTMR (red). As shown in Figure 4 D and E, allogeneic DCs were present at high numbers only in NK-depleted mice. NK cells were then visualized by NKp46-staining²⁶. Consistent with previous works^{18,26}, NK cells were found in the paracortex and the medulla of lymph nodes of control but not anti-NK1.1-treated mice (Figure 4E), and therefore co-localized in the same lymph node areas as DCs (see Figure S5 and S7). We next determined the kinetics of DC elimination in the draining lymph nodes by injecting B6 CD8^{-/-} mice with a mixture of CFSE-labeled BALB/c DCs (green) and CMTMR-labeled B6 DCs (red). Data in Figure 4F show that allogeneic DC numbers were not affected by the presence or absence of NK cells at early time point (18 hours). By contrast, alterations in BALB/c DC numbers were evident at 24 to 48 hours in control mice as compared to NK-depleted hosts. Altogether, these data show that allogeneic DCs fail to accumulate and to persist in the presence of NK cells, and suggest that NK cells expressing the Ly49D activating receptor participate in a large extent to the rapid elimination of allogeneic DCs within the draining lymph nodes.

Supprimé : 4E

Recently recruited NK cells are responsible of allogeneic DC killing

The above data indicated that the rapid afflux of NK cells in the draining lymph nodes was associated with the elimination of donor-derived allogeneic DCs. We therefore investigated whether newly recruited NK cells rather than resident NKs were directly implicated in allogeneic DC killing. To assess this point, we performed L-selectin-blocking

experiments as some reports have shown that entry of blood NK cells into lymph nodes was mediated through HEVs (high endothelial venules) in a CD62L-dependent manner^{18,27,28}. B6 CD8^{-/-} mice were injected with anti-CD62L blocking mAb and immunized 3 hours later with allogeneic DCs. At 48 hours after DC injection, draining lymph nodes were harvested and analyzed for the presence of NK cells and allogeneic DCs. As expected, the number of NK cells recruited into DC-draining lymph nodes was reduced by 90 % by injecting anti-CD62L mAb (Figure 5A). We looked at the repartition of two NK cell subsets, the newly described thymic NK cells expressing CD127 (IL-7 receptor α)²⁹ and the conventional CD127⁻ NK subset. We found that the CD62L blockade preferentially affected the conventional subset with a marked decrease in the percentage of CD127⁻ NK cells expressing Ly49D (Figure 5B). Blockade of blood-borne NK cell migration into the lymph nodes prevented allogeneic DC killing, as efficiently as NK cell depletion (Figure 5C). These results strongly suggested that CD127⁻ Ly49D⁺ NK cells recruited from the blood into the draining lymph nodes were responsible for allogeneic DC elimination, rather than lymph node-resident NK cells.

Perforin-mediated killing is critical for the elimination of allogeneic DCs by host NK cells *in vivo*

To gain insight into the mechanisms underlying allogeneic DC elimination by NK cells, we analyzed DC persistence in perforin-deficient mice, as perforin is a critical molecule in the cytolytic function of NK cells³⁰. Groups of B6 WT and B6 pfp^{-/-} mice were all depleted of CD8⁺ T lymphocytes by antibody treatment, as we and others recently showed that CTL can rapidly kill semi-allogeneic DCs within the draining lymph nodes^{15,31}. Groups of mice received in addition anti-NK1.1 mAb prior to injection with equal numbers of allogeneic BALB/c and syngeneic B6 DCs differentially labeled with CFSE as above (Figure 6A and Figure S4A). We found that allogeneic DCs failed to accumulate unless NK cells were

previously depleted. In contrast, similar numbers of allogeneic DCs were found in both control and NK-depleted pfp-deficient B6 mice, suggesting that perforin-dependent cytotoxicity is the main pathway of NK cell-mediated allogeneic DC killing *in vivo*. Unlike for allogeneic DCs, migration and survival of syngeneic B6 DCs were not affected by perforin-deficiency (not shown). We also investigated the role of IL-12R-signaling in NK cells, as IL-12 has been reported to be required for NK cell cytotoxicity in some *in vivo* models³². As shown in Figure 6B and Figure S4B, NK cells in IL-12R β 2-deficient mice were as effective as in WT mice in mediating cytotoxic elimination of allogeneic DCs *in vivo*.

The key role played by perforin in the elimination of allogeneic DC was then confirmed by confocal microscopy analysis. B6 CD8^{-/-} or B6 CD8^{-/-}pfp^{-/-} double knock-out mice were co-injected as above with BALB/c (green) and B6 (red) DCs (Figure 6C and D). While allogeneic BALB/c DCs were almost absent in B6 CD8^{-/-} mice (Figure 6C), they were readily detectable within the draining lymph nodes of B6 CD8^{-/-}pfp^{-/-} mice (Figure 6D), despite similar numbers of NK cells (Figure S5). Depletion of host NK cells by anti-NK.1.1 treatment fully restored allogeneic DC numbers in B6 CD8^{-/-} mice (Figure 6C), whereas it had no significant effect on allogeneic DC persistence in perforin-deficient B6 CD8^{-/-} mice (Figure 6D). Likewise, strong alloreactive CD4⁺ T cell priming occurred in pfp-deficient B6 CD8^{-/-} mice whether NK cells were present or not (Figure S6). To demonstrate that perforin in NK cells was indeed crucial for allogeneic DC elimination, we examined whether adoptively transferred wild-type NK cells could influence BALB/c DCs numbers in perforin-deficient CD8^{-/-} mice. Allogeneic BALB/c DC numbers were substantially reduced in lymph node sections from mice reconstituted with highly purified wild-type NK cells (Figure S7). Altogether, these data demonstrate that perforin-dependent cytotoxicity is the main pathway implicated in allogeneic DC elimination by host NK cells within lymph nodes.

Supprimé :

Early killing of allogeneic H-2^d DCs by host NK cells inhibits alloreactive CD8⁺ T cell priming *in vivo*.

Since CD8⁺ T cells can clearly contribute to allogeneic DC killing in the lymph nodes¹⁵, we used so far CD8-deficient mice to focus more accurately on the mechanisms of DC killing by NK cells. To assess the significance of our findings in a situation where other MHC class I-directed pathways are operating, we first evaluated the effect of NK cells in alloreactive CD8⁺ T cell-priming. For this, CD8-deficient mice were reconstituted with CFSE-labelled CD8⁺ T lymphocytes from normal mice prior to allogeneic DC immunization. Recipient mice were depleted or not of NK cells by anti-NK1.1 mAb treatment. CFSE-dilution in CD8⁺ T cells in draining lymph nodes was evaluated 4 days later. In control mice, CD8⁺ T lymphocytes that had divided and thus demonstrated lower CFSE intensity were detected in the lymph nodes draining the allogeneic DC injection site (Figure 7 A) as compared to distal lymph nodes (Figure 7B) or lymph nodes from naïve control (data not shown). Interestingly, NK cell depletion further increased the frequency of proliferating CD8⁺ T cells (Figure 7 A-D). We next evaluated the NK cell requirement for allogeneic DC elimination in wild-type mice. Normal mice were either left untreated, depleted of NK cells, or both NK cells and CD8⁺ T lymphocytes prior to administration of differentially labelled DCs as in Figure 6. Draining lymph nodes were collected after 28 or 72 hours to determine the frequency of allogeneic BALB/c DCs by confocal microscopy. Data in Figure 7 (E and F) show that, in normal mice, NK cells have already eliminated allogeneic DCs by 28 hours, before CD8⁺ T cell-mediated killing that occurred later by 48-72 hours, in agreement with our previous work¹⁵. In conclusion, these data demonstrate that host NK cells can kill allogeneic H-2^d DCs in the presence of CD8⁺ T cells thereby limiting alloreactive CD8⁺ T cell priming *in vivo*.

Supprimé : cells

Supprimé : e

Supprimé : Interestingly

Discussion.

Here we report that in allotransplantation settings, host NK cells regulate alloreactive T cell responses through direct killing of allogeneic DCs in secondary lymphoid organs. We showed that newly recruited Ly49D⁺ NK cells in B6 recipients specific for H-2 D^d MHC class I molecules were able to kill allogeneic BALB/c (H-2^d) DCs through a perforin-dependent mechanism. Our data support a model in which donor-derived DCs migrate into the draining lymph nodes where they induce L-selectin-dependent recruitment of blood-borne NK cells. Thus, recruitment of alloreactive NK cells in graft draining lymph nodes could limit alloreactive T cell priming through lysis of allogeneic DCs. Indeed, in a model of CD4⁺ T cell mediated skin graft rejection, we showed that the absence of NK cell activation resulted in an enhanced expansion of alloreactive CD4⁺ T cells, including Th2 cells which probably accounted for the massive infiltrates of eosinophils found in rejected allografts. In normal mice, we finally showed that NK cells quickly eliminated allogeneic DCs within the lymph nodes draining the DC injection site thereby inhibiting alloreactive CD8⁺ T cell responses. These data, in agreement with previous works^{13,14}, support the concept that host NK cells may suppress rather than enhance alloreactive CD4⁺ and CD8⁺ T cell responses through their capacity to rapidly kill donor derived APCs in secondary lymphoid tissues.

Indeed, besides their important function in the elimination of transformed or infected cells in the periphery, recent evidence from both human and mouse studies have documented that NK cells could also regulate adaptive immune responses by modulating DC functions or by producing polarizing cytokines such as IFN- γ ^{27,33-35}. *In vitro* experiments have shown that human NK cells can efficiently kill autologous immature but not mature DCs, suggesting that NK cells might play an important regulatory role by selecting immunogenic mature DCs during the initiation of immune responses^{33,34}. The situation is however different in allotransplantation settings where mature allogeneic DCs, lacking self-MHC class I, should be

Supprimé :

Supprimé : d

Supprimé :

Supprimé : ed

Supprimé : ed

readily eliminated by host alloreactive NK cells, leading to opposite effects on the T cell responses. Indeed, donor NK alloreactivity has been exploited in bone marrow transplantation to improve clinical outcome. Alloreactive NK cells were not only able to induce more effective elimination of leukemia cells, but also to prevent graft-versus-host disease through their capacity to kill recipient DCs thereby avoiding alloreactive donor T cell priming³⁶. Interestingly, in skin transplantation models, it has been recently shown that recipient NK cells were able to prevent the persistence of graft-derived allogeneic DCs. In this study, the presence of recipient NK cells was required to promote efficient allograft survival induced by costimulation blockade¹³. However, the mechanisms by which NK cells were able to eliminate allogeneic DC *in situ* were not examined. Our present work now shows that encounter of mature allogeneic DCs with NK cells occurs in secondary lymphoid organs leading to NK cell-mediated killing of donor-derived DCs, thereby inhibiting alloreactive T cell priming. In addition, we clearly established that the perforin-pathway is mainly involved in allogeneic DC elimination. This is in contrast with the NK-mediated killing of immature autologous DC *in vivo* which has been mainly attributed to TRAIL-mediated cytotoxicity rather than perforin³⁷.

Phenotypically and functionally distinct subsets of NK cells have been described in human³⁸ and in mouse²⁹. It is unlikely that the immunoregulatory function of NK cells we observed in this work could be attributed to the lymph node resident CD127⁺ NK subset²⁹. In mouse lymph node resident NK cells represent only 0.5 % of mononuclear cells, of which only 20% are CD127⁺²⁹. However, although mouse NK cells appear to be excluded from lymph nodes under steady-state conditions, they can be recruited at high numbers into LNs draining sites of immunization or infection^{18,27,39,40}. In a mouse model, it has been recently shown that mature DCs could promote NK cell recruitment to lymph nodes which provided an early source of IFN- γ required for optimal Th1 cell development²⁷. In our model, we

showed that NK cells expressing Ly49D compose the main subset implicated not only in the regulation of T cell expansion and polarization but also in perforin-mediated allogeneic DC-killing. Thus, the requirement for Ly49D expression together with pfp-dependent cytotoxicity pointed out to a role for CD127⁻ rather than CD127⁺ NK subset. CD127⁻ Ly49D⁺ NK cells are likely to be recruited from the peripheral blood into the DC-draining lymph nodes. In agreement with recent works^{18,27}, we showed that NK cell recruitment in lymph nodes occurred through a L-selectin dependent mechanism. Indeed, preventing lymphocyte recruitment by CD62L blockade resulted in an increased persistence of incoming allogeneic DCs, demonstrating that recently recruited NK cells were implicated in the perforin-dependent killing of these cells.

In summary, our study has characterized the mechanisms governing the killing of allogeneic DCs by host NK cells, which results in impaired development of alloreactive T cell responses. Allogeneic (H-2^d) DC elimination is perforin-dependent, occurs in draining lymph nodes and requires the recruitment of CD127⁻ Ly49D⁺ blood-borne NK cells. Our study, together with recent works¹³, suggest that alloreactive NK cells through their capacity to rapidly kill donor-derived allogeneic DCs could synergize with immunosuppressive agents to limit T cell alloreactivity and to improve induction of transplantation tolerance.

Acknowledgments

The skillful assistance of the personnel of the animal facility at the Institut Fédératif de Recherche 30 (IFR30) is greatly acknowledged. We also thank C. Coureau (INSERM U563), F. Capilla (Histopathology facility, IFR30) and Sophie Allart (Cellular Imaging facility, IFR30) for their technical assistance. We wish to thank Dr S. Guerder (INSERM U563) for stimulating discussions, Dr H.R. MacDonald (Ludwig Institute for cancer research, Epalinges, Switzerland) and Dr T. Walzer (Centre d'Immunologie de Marseille-Luminy, France) for kindly providing Mel-14 monoclonal antibody and anti-NKp46 antibodies, respectively.

Author's contribution statement

Sophie Laffont designed, performed research and analyzed data. Cyril Seillet performed research and analyzed data. Jérôme D. Coudert designed research and analyzed data. John Ortaldo provided reagents and reviewed the data and the manuscript. Jean-Charles Guéry designed research, analyzed data and wrote the paper with input from the co-authors. The authors declare no competing financial interests.

References

1. Trinchieri G. Biology of natural killer cells. *Adv Immunol.* 1989;47:187-376.
2. Raulet DH, Vance RE, McMahon CW. Regulation of the natural killer cell receptor repertoire. *Annu rev Immunol.* 2001;19:291-330.
3. Lanier LL. NK cell recognition. *Annu Rev Immunol.* 2005;23:225-274.
4. Ljunggren HG, Karre K. In search of the 'missing self': MHC molecules and NK cell recognition. *Immunol Today.* 1990;11:237-244.
5. Manilay JO, Sykes M. Natural killer cells and their role in graft rejection. *Curr Opin Immunol.* 1998;10:532-538.
6. Kitchens WH, Uehara S, Chase CM, Colvin RB, Russell PS, Madsen JC. The changing role of natural killer cells in solid organ rejection and tolerance. *Transplantation.* 2006;81:811-817.
7. Heidecke CD, Araujo JL, Kupiec-Weglinski JW, et al. Lack of evidence for an active role for natural killer cells in acute rejection of organ allografts. *Transplantation.* 1985;40:441-444.
8. Zijlstra M, Auchincloss H, Jr., Loring JM, Chase CM, Russell PS, Jaenisch R. Skin graft rejection by beta 2-microglobulin-deficient mice. *J Exp Med.* 1992;175:885-893.
9. Maier S, Tertilt C, Chambron N, et al. Inhibition of natural killer cells results in acceptance of cardiac allografts in CD28^{-/-} mice. *Nat Med.* 2001;7:557-562.
10. Uehara S, Chase CM, Kitchens WH, et al. NK cells can trigger allograft vasculopathy: the role of hybrid resistance in solid organ allografts. *J Immunol.* 2005;175:3424-3430.
11. McNerney ME, Lee KM, Zhou P, et al. Role of natural killer cell subsets in cardiac allograft rejection. *Am J Transplant.* 2006;6:505-513.
12. Beilke JN, Kuhl NR, Van Kaer L, Gill RG. NK cells promote islet allograft tolerance via a perforin-dependent mechanism. *Nat Med.* 2005;11:1059-1065.

13. Yu G, Xu X, Vu MD, Kilpatrick ED, Li XC. NK cells promote transplant tolerance by killing donor antigen-presenting cells. *J Exp Med.* 2006;203:1851-1858.
14. Coudert JD, Coureau C, Guery JC. Preventing NK cell activation by donor dendritic cells enhances allospecific CD4 T cell priming and promotes Th type 2 responses to transplantation antigens. *J Immunol.* 2002;169:2979-2987.
15. Laffont S, Coudert JD, Garidou L, et al. CD8+ T-cell-mediated killing of donor dendritic cells prevents alloreactive T helper type-2 responses in vivo. *Blood.* 2006;108:2257-2264.
16. Lutz MB, Kukutsch N, Ogilvie ALJ, et al. An advanced culture method for generating large quantities of highly pure dendritic cells from mouse bone marrow. *J Immunol Meth.* 1999;223:77-92.
17. Foucras G, Coudert JD, Coureau C, Guery JC. Dendritic cells prime in vivo alloreactive CD4 T lymphocytes toward type 2 cytokine- and TGF-beta-producing cells in the absence of CD8 T cell activation. *J Immunol.* 2000;165:4994-5003.
18. Bajenoff M, Breart B, Huang AY, et al. Natural killer cell behavior in lymph nodes revealed by static and real-time imaging. *J Exp Med.* 2006.
19. Lechler R, Ng WF, Steinman RM. Dendritic cells in transplantation--friend or foe? *Immunity.* 2001;14:357-368.
20. Raziuddin A, Longo DL, Mason L, Ortaldo JR, Bennett M, Murphy WJ. Differential effects of the rejection of bone marrow allografts by the depletion of activating versus inhibiting Ly-49 natural killer cell subsets. *J Immunol.* 1998;160:87-94.
21. George TC, Mason LH, Ortaldo JR, Kumar V, Bennett M. Positive recognition of MHC class I molecules by the Ly49D receptor of murine NK cells. *J Immunol.* 1999;162:2035-2043.

22. Mason LH, Willette-Brown J, Anderson SK, et al. Receptor glycosylation regulates Ly-49 binding to MHC class I. *J Immunol.* 2003;171:4235-4242.
23. Ortaldo JR, Winkler-Pickett R, Mason AT, Mason LH. The Ly-49 family: regulation of cytotoxicity and cytokine production in murine CD3+ cells. *J Immunol.* 1998;160:1158-1165.
24. Ortaldo JR, Winkler-Pickett R, Wiegand G. Activating Ly-49D NK receptors: expression and function in relation to ontogeny and Ly-49 inhibitor receptors. *J Leukoc Biol.* 2000;68:748-756.
25. Smith KM, Wu J, Bakker AB, Phillips JH, Lanier LL. Ly-49D and Ly-49H associate with mouse DAP12 and form activating receptors. *J Immunol.* 1998;161:7-10.
26. Walzer T, Blery M, Chaix J, et al. Identification, activation, and selective in vivo ablation of mouse NK cells via NKp46. *Proc Natl Acad Sci U S A.* 2007;104:3384-3389.
27. Martin-Fontecha A, Thomsen LL, Brett S, et al. Induced recruitment of NK cells to lymph nodes provides IFN-gamma for T(H)1 priming. *Nat Immunol.* 2004;5:1260-1265.
28. Chen S, Kawashima H, Lowe JB, Lanier LL, Fukuda M. Suppression of tumor formation in lymph nodes by L-selectin-mediated natural killer cell recruitment. *J Exp Med.* 2005;202:1679-1689.
29. Vosshenrich CA, Garcia-Ojeda ME, Samson-Villeger SI, et al. A thymic pathway of mouse natural killer cell development characterized by expression of GATA-3 and CD127. *Nat Immunol.* 2006;7:1217-1224.
30. Russell JH, Ley TJ. Lymphocyte-mediated cytotoxicity. *Annu Rev Immunol.* 2002;20:323-370.
31. Guarda G, Hons M, Soriano SF, et al. L-selectin-negative CCR7- effector and memory CD8+ T cells enter reactive lymph nodes and kill dendritic cells. *Nat Immunol.* 2007;8:743-752.

32. Schleicher U, Liese J, Knippertz I, et al. NK cell activation in visceral leishmaniasis requires TLR9, myeloid DCs, and IL-12, but is independent of plasmacytoid DCs. *J Exp Med*. 2007;204:893-906.
33. Raulet DH. Interplay of natural killer cells and their receptors with the adaptive immune response. *Nat Immunol*. 2004;5:996-1002.
34. Moretta L, Ferlazzo G, Bottino C, et al. Effector and regulatory events during natural killer-dendritic cell interactions. *Immunol Rev*. 2006;214:219-228.
35. Cooper MA, Fehniger TA, Fuchs A, Colonna M, Caligiuri MA. NK cell and DC interactions. *Trends Immunol*. 2004;25:47-52.
36. Ruggeri L, Capanni M, Urbani E, et al. Effectiveness of donor natural killer cell alloreactivity in mismatched hematopoietic transplants. *Science*. 2002;295:2097-2100.
37. Hayakawa Y, Screpanti V, Yagita H, et al. NK cell TRAIL eliminates immature dendritic cells in vivo and limits dendritic cell vaccination efficacy. *J Immunol*. 2004;172:123-129.
38. Ferlazzo G, Munz C. NK cell compartments and their activation by dendritic cells. *J Immunol*. 2004;172:1333-1339.
39. Fehniger TA, Cooper MA, Nuovo GJ, et al. CD56bright natural killer cells are present in human lymph nodes and are activated by T cell-derived IL-2: a potential new link between adaptive and innate immunity. *Blood*. 2003;101:3052-3057.
40. Ferlazzo G, Pack M, Thomas D, et al. Distinct roles of IL-12 and IL-15 in human natural killer cell activation by dendritic cells from secondary lymphoid organs. *Proc Natl Acad Sci U S A*. 2004;101:16606-16611.

Figure legends

Figure 1. In absence of NK cell activation, allogeneic skin grafting induces strong alloreactive CD4⁺ T-cell responses associated with Th2 cell development and massive eosinophil recruitment. (A, B, C) B6 CD8^{-/-} mice treated or not with anti-NK1.1 PK136 mAb, received a skin graft from allogeneic BALB/c mice. Eight days after grafting, draining lymph nodes were harvested. Lymph nodes from naïve mice were taken as control. Purified CD4⁺ T cells were cultured (2×10^5 cells/well) in the presence of irradiated allogeneic BALB/c splenocytes (1×10^5 cells/well) for 72 hours. (A) CD4⁺ T-cell proliferation was evaluated by ³H-TdR incorporation. Background proliferation were below 500 cpm. (B) IFN- γ and (C) IL-4 productions were measured by ELISA in 72-hour culture supernatants. Results are expressed as mean \pm SEM of 5 mice per group. (D) B6 CD8^{-/-} mice, treated or not with anti-NK1.1, received a skin graft from syngeneic B6, semi-allogeneic CB6F1 or fully allogeneic BALB/c mice. At the day of graft rejection (day 10-12), transplanted skins were harvested. Skin histological analyses were performed and the percentage of eosinophils among total mononuclear infiltrating cells was evaluated as described in “Materials and methods” (3-5 mice per group). Data are from one representative experiment of at least two performed. * $P < 0.05$; ** $P < 0.01$; N.S., not significant.

Figure 2. Ly49D⁺ NK cells regulate alloreactive CD4 T cell priming and polarization in response to allogeneic H-2^d DCs. (A) B6 CD8^{-/-} mice, treated or not with anti-NK1.1 PK136 mAb or anti-Ly49A/D 12A8 mAb, were injected s.c. with allogeneic BALB/c DCs. Six days after immunization, CD4⁺ T cells were purified from draining lymph nodes, and restimulated (2×10^5 cells/well) with irradiated allogeneic BALB/c splenocytes for 72 hours to measure proliferation and cytokine production. Results are expressed as mean \pm SEM of 3 mice per

group. Data are from one representative experiment of three performed. **(B)** To evaluate the frequency of IL-4-producing cells, purified CD4⁺ T cells were cultured for 8 hours with T cell-depleted BALB/c splenocytes in the presence of anti-CD28 mAb. Intracytoplasmic staining for IL-4 was then performed as described in "Materials and methods". Results are expressed as percentage of CD69^{pos} CD4^{pos} T cells producing IL-4 (mean ± SEM of 3 mice per group). **(C, D)** B6 CD8^{-/-} mice, treated or not with anti-NK1.1 PK136 mAb or anti-Ly49D 4E5 mAb, were injected s.c. with DCs derived from either WT BALB/c mouse **(C)** or β2m^{-/-} BALB/c mouse **(D)**. Six days after immunization, CD4⁺ T cells were purified from draining lymph nodes, and restimulated (2 x 10⁵ cells/well) with irradiated allogeneic BALB/c splenocytes for 72 hours to measure proliferation and cytokine production. Results are expressed as mean ± SEM of 3 mice per group. Background proliferation were below 1500 cpm. Data are representative of at least two experiments performed.

Figure 3. Increased recruitment and activation of host NK cells in lymph nodes following allogeneic DC immunization. B6 CD8^{-/-} mice were left untreated (-) or injected with either syngeneic B6 DCs or allogeneic BALB/c DCs. 24 hours after immunization, draining lymph nodes were harvested and the percentage of TCRβ^{neg} NK1.1^{pos} cells was determined **(A)** as well as the percentage of NK cells (TCRβ^{neg} NK1.1^{pos}DX5^{pos}) expressing CD69 **(B)** and CD11b **(C)**. The frequency of CD69^{pos} NK cells (TCRβ^{neg} NK1.1^{pos}) producing IFN-γ was evaluated by *ex-vivo* intracytoplasmic staining without prior stimulation as described in "Materials and methods" **(D)**. Results are expressed as mean ± SEM of 4 to 5 mice per group. *P<0.05 ; **P< 0.01 ; N.S., not significant. Data are from one representative experiment of three performed.

Figure 4. The persistence of donor-derived DCs in lymph nodes is impaired in the

presence of host Ly49D⁺ NK cells. (A, B) B6 CD8^{-/-} mice, treated or not with anti-NK1.1 PK136 mAb, were injected with CFSE^{low}-labeled syngeneic B6 DCs and CFSE^{high}-labeled allogeneic BALB/c DCs. Draining lymph nodes were harvested at indicated times after immunization and analyzed for the presence of CFSE-labeled cells. Cells were gated on CD11c^{pos}, MHC II^{high} and CFSE^{pos} cells. (A) Representative CFSE profiles of injected DCs obtained at 48 hours from untreated or PK136-treated mice. (A, B) Numbers in dot plots and histograms indicate the percentages of allogeneic BALB/c CFSE^{high} cells normalized to control syngeneic B6 CFSE^{low} cells [(%BALB/c DCs : %B6 DCs) x 100]. (C) B6 CD8^{-/-} mice were treated, or not, with anti-NK1.1 PK136 mAb or anti-Ly49D 4E5 mAb, and injected as in (A) with a mixture of CFSE^{low}-B6 DCs and CFSE^{high}-BALB/c DCs. 48 hours after immunization, the presence of CFSE positive cells was analyzed in the draining lymph nodes and the percentage of CFSE^{high} BALB/c cells among control CFSE^{low} B6 cells was determined. Results are expressed as mean ± SEM of 3 to 4 mice per group. (D) B6 CD8^{-/-} mice treated or not with PK136 were injected with 1 or 2 x 10⁶ CMTMR-labeled BALB/c DCs. 48 hours after immunization, draining lymph nodes were harvested, prepared as described in "Materials and methods", and stained with anti-B220 and anti-PNAd mAbs (blue). Lymph nodes sections were then analyzed by confocal microscopy and the numbers of red DCs per lymph node were evaluated. Results are expressed as mean ± SEM of four lymph nodes per group (two mice/group). (E, F) B6 CD8^{-/-} mice were treated or not with PK136 as indicated before immunization with DCs. (E) Mice were immunized with CMTMR-labeled BALB/c DCs (red). Frozen sections of lymph nodes at 48 hours were stained with goat anti-NKp46 antibodies and then donkey anti-goat Alexa488 antibodies. Numbers of NK cells and BALB/c DCs per section were counted and results expressed as mean ± SEM of four to six lymph nodes per group. In panels (F), mice were injected with CFSE-labeled BALB/c DCs (green) and CMTMR-labeled B6 DCs (red). Draining lymph nodes were removed at indicated

times after immunization to evaluate the kinetics of allogeneic DC appearance. Lymph node sections were then stained with anti-B220 and anti-PNAd mAbs (blue). Representative tissue sections from untreated or PK136-treated mouse lymph nodes harvested at 48 hours after injection are depicted. Histograms indicate the percentage of CFSE BALB/c cells among control CMTMR B6 cells. Results are expressed as mean \pm SEM of individual lymph nodes (2-3 mice per group). * P <0.05 ; ** P < 0.01 ; N.S., not significant. Data are representative of at least two to three experiments performed.

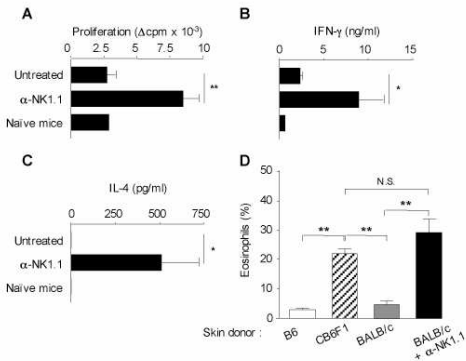
Figure 5. Recently recruited NK cells are responsible for allogeneic DC killing. (A, B, C) B6 CD8^{-/-} mice, treated or not with anti-CD62L Mel-14 mAb, were immunized with CFSE^{high} syngeneic B6 DCs and CFSE^{low} allogeneic BALB/c DCs. 48 hours after injection, draining lymph nodes were removed and analyzed for the presence of NK cells and CFSE DCs (CD11c^{pos} MHC II^{high} CFSE^{pos} cells). **(A)** Absolute numbers of NK cells (TCR β ^{neg} NK1.1^{pos}) recovered from lymph node are indicated. **(B)** Expression of CD127 and Ly49D on NK cells (TCR β ^{neg} NK1.1^{pos}). **(C)** Representative CFSE profiles of injected DCs from control, Mel-14- or PK136-treated mouse lymph nodes are shown. Numbers indicate the percentage of CFSE^{low} BALB/c DCs among control CFSE^{high} B6 DCs. A representative experiment of three is shown.

Figure 6. Perforin-mediated killing is critical for the elimination of allogeneic DCs by host NK cells *in vivo*. **(A)** B6 WT, B6 pfp^{-/-} or **(B)** IL-12R β 2^{-/-} mice, all CD8-depleted, were injected or not with anti-NK1.1 PK136 mAb and then immunized with equal numbers of CFSE^{low}-B6 DCs and CFSE^{high}-BALB/c DCs. **(A)** Results are expressed as mean \pm SEM of 3 mice per group and are from one representative experiment of four performed. **(B)** Results are expressed as mean \pm SEM of 4 mice per group. **(C)** B6 CD8^{-/-} and CD8^{-/-}pfp^{-/-} **(D)** mice

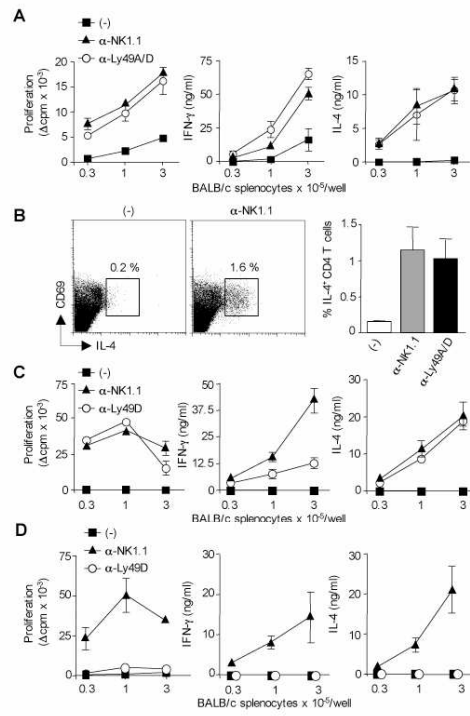
were injected with equal numbers of CFSE-labeled BALB/c DCs (green) and CMTMR-labeled B6 DCs (red). 48 hours after immunization draining lymph nodes were harvested and prepared for confocal microscopy analysis. Lymph node sections were stained anti-B220 and anti-PNAd mAbs (blue). Results are expressed as the percentage of CFSE BALB/c DCs among control CMTMR B6 DCs. Data were pooled from two independent experiments. Results are expressed as mean \pm SEM of individual lymph nodes (4-5 mice per group). * P <0.05 ; ** P <0.01 ; N.S., not significant.

Figure 7: Host NK cells inhibit alloreactive CD8⁺ T cell priming in vivo through their capacity to rapidly eliminate allogeneic H-2^d DCs in draining lymph nodes. (A, B) B6 CD8^{-/-} mice, treated or not with anti-NK1.1 PK136 mAb, were injected i.v. with 10⁷ CFSE-labelled CD8⁺ T lymphocytes. Mice were then immunized with allogeneic BALB/c DCs (10⁶/mouse) one day after passive CD8⁺ T cell transfert. Four days after immunization, CFSE dilution in TCRβ⁺CD8⁺ T cells was analyzed in popliteal (proximal) or inguinal (distal) lymph node cells by flow cytometry (A). Panels C and D show the percentage of CD8⁺ T cells (C) and CFSE low CD8⁺ T cells (D) among total popliteal lymph node cells from individual mice (3-4 per group). Data are representative of three experiments performed. In panels E and F, normal C57BL/6 mice were injected with anti-NK1.1 PK136 mAb alone or together with anti-CD8 depleting mAb as indicated. Mice were immunized with a mixture of CFSE-labeled BALB/c DCs (green) and CMTMR-labeled B6 DCs (red) as in Figure 6. Lymph nodes were collected at 28 hours (E) or 72 hours (F) and processed for confocal microscopy analysis as in Figure 6. Histograms indicate the percentage of CFSE BALB/c DCs among control CMTMR B6 DCs. Results are expressed as mean \pm SEM of individual lymph nodes (2-3 mice per group) and are representative of two experiments performed.

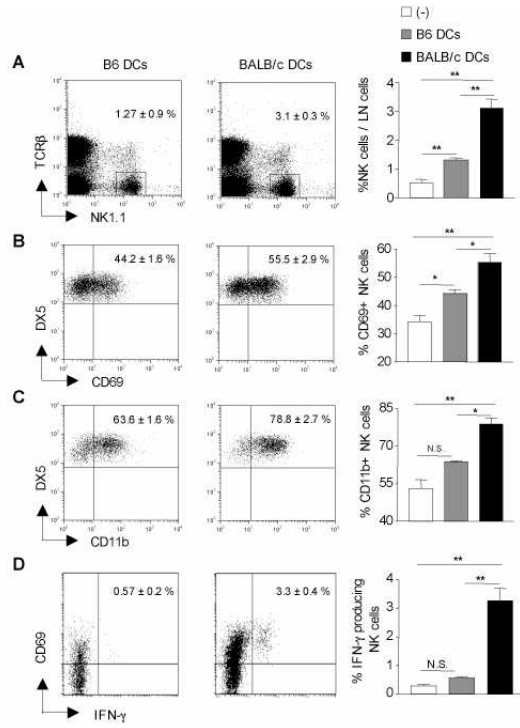
Figures



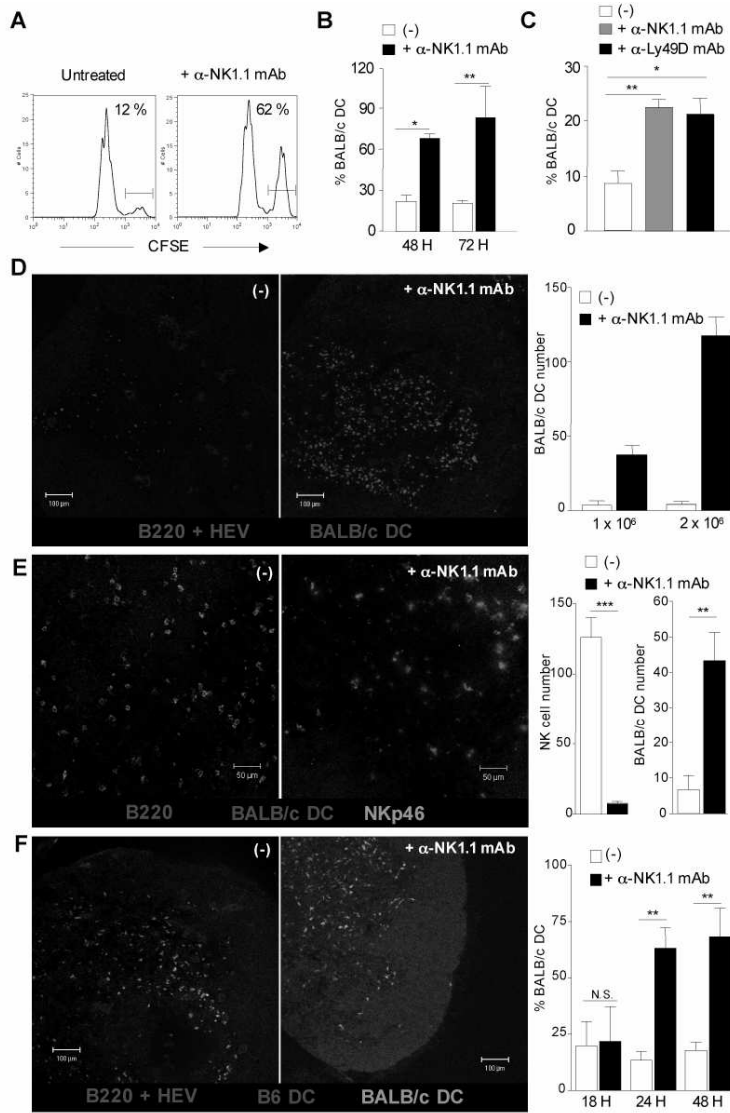
Laffont et al. Figure 1.



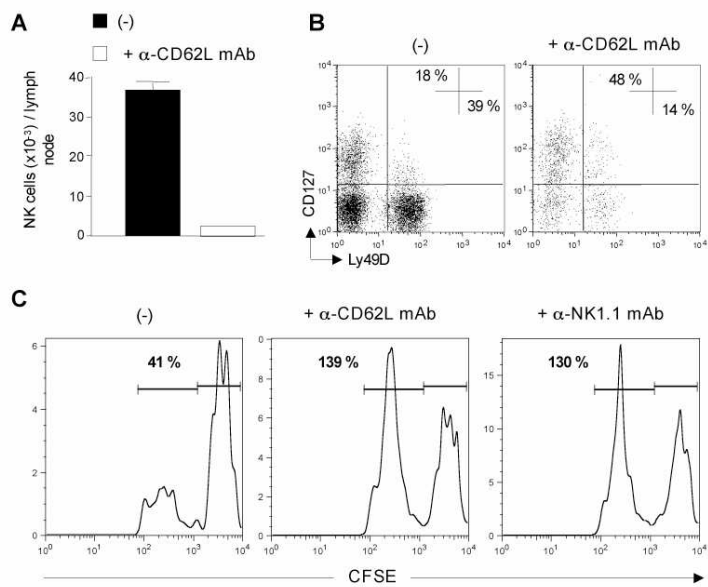
Laffont et al. Figure 2.



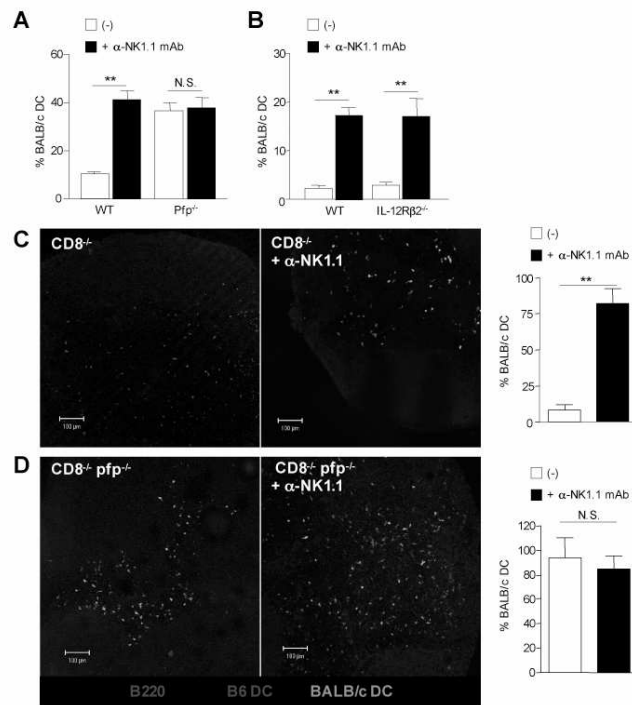
Laffont et al. Figure 3.



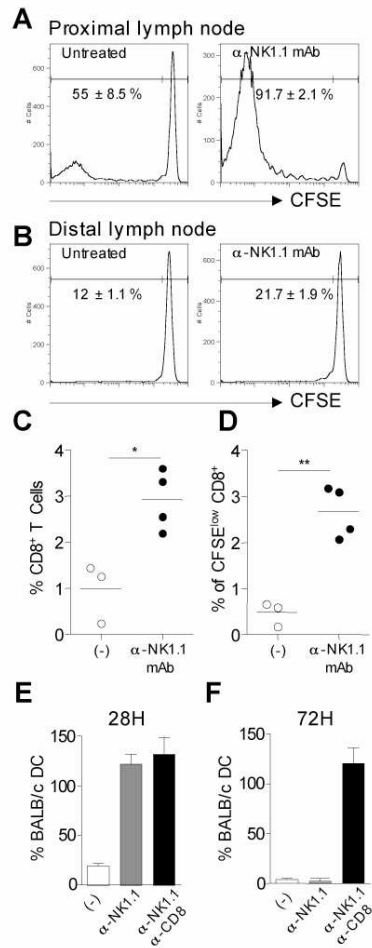
Laffont et al. Figure 4.



Laffont et al. Figure 5.



Laffont et al. Figure 6.



Laffont et al. Figure 7.