



HAL
open science

A focused antibody library for selecting scFvs expressed at high levels in the cytoplasm.

Pascal Philibert, Audrey Stoessel, Wei Wang, Annie-Paule Sibler, Nicole Bec, Christian Larroque, Jeffery Saven, Jérôme Courtête, Etienne Weiss, Pierre Pm Martineau

► **To cite this version:**

Pascal Philibert, Audrey Stoessel, Wei Wang, Annie-Paule Sibler, Nicole Bec, et al.. A focused antibody library for selecting scFvs expressed at high levels in the cytoplasm.. BMC Biotechnology, BioMed Central, 2007, 7 (1), pp.81. 10.1186/1472-6750-7-81 . inserm-00192411

HAL Id: inserm-00192411

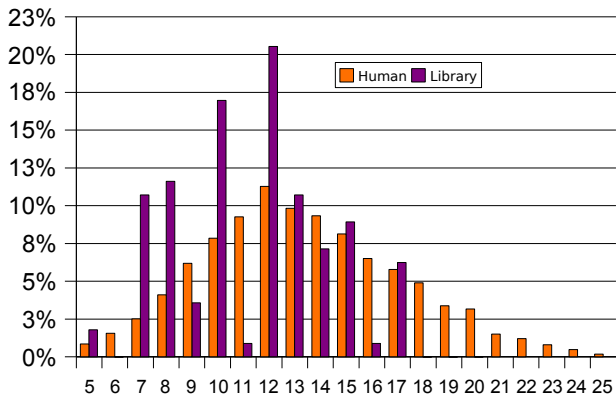
<https://www.hal.inserm.fr/inserm-00192411>

Submitted on 27 Nov 2007

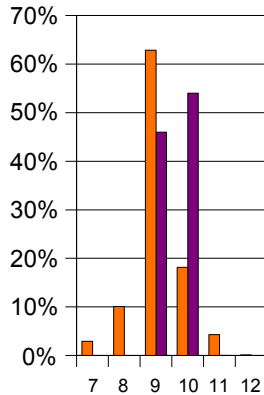
HAL is a multi-disciplinary open access archive for the deposit and dissemination of scientific research documents, whether they are published or not. The documents may come from teaching and research institutions in France or abroad, or from public or private research centers.

L'archive ouverte pluridisciplinaire **HAL**, est destinée au dépôt et à la diffusion de documents scientifiques de niveau recherche, publiés ou non, émanant des établissements d'enseignement et de recherche français ou étrangers, des laboratoires publics ou privés.

Heavy CDR3



κ CDR3



λ CDR3

