



HAL
open science

Optimization of intravascular brachytherapy treatment planning in peripheral arteries.

Zhengdong Zhou, Pascal Haigron, Huazhong Shu, Wenxue Yu, Cécile Moisan, Jean-Pierre Manens, Antoine Lucas, Limin Luo

► **To cite this version:**

Zhengdong Zhou, Pascal Haigron, Huazhong Shu, Wenxue Yu, Cécile Moisan, et al.. Optimization of intravascular brachytherapy treatment planning in peripheral arteries.. Computerized Medical Imaging and Graphics, Elsevier, 2007, 31 (6), pp.401-7. 10.1016/j.compmedimag.2007.03.001 . inserm-00183861

HAL Id: inserm-00183861

<https://www.hal.inserm.fr/inserm-00183861>

Submitted on 30 Oct 2007

HAL is a multi-disciplinary open access archive for the deposit and dissemination of scientific research documents, whether they are published or not. The documents may come from teaching and research institutions in France or abroad, or from public or private research centers.

L'archive ouverte pluridisciplinaire **HAL**, est destinée au dépôt et à la diffusion de documents scientifiques de niveau recherche, publiés ou non, émanant des établissements d'enseignement et de recherche français ou étrangers, des laboratoires publics ou privés.

Optimization of intravascular brachytherapy treatment planning in peripheral arteries

Zhengdong Zhou^{1,7}, Pascal Haigron^{2,3}, Huazhong Shu^{1,4}, Wenxue Yu¹, Cécile Moisan^{2,3,6}, Jean-Pierre Manens⁵, Antoine Lucas^{2,3,6}, Limin Luo^{1,4}

¹LIST, Department of Computer Science and Engineering, Southeast University, 210096 Nanjing, China;

²INSERM, U642, Rennes, F-35000, France;

³Université de Rennes 1, LTSI, Rennes, F-35000, France;

⁴Centre de Recherche en Information Biomédicale Sino-Français, CRIBs

⁵CRLCC, Eugène Marquis, Rennes, F-35000, France;

⁶CHU Rennes, Service de Chirurgie Vasculaire, Rennes, F-35000, France;

⁷Department of Medical Physics, Nanjing University of Aeronautics and Astronautics, 210016 Nanjing, China.

Abstract. This work deals with the treatment planning optimization for intravascular brachytherapy (IVB) in peripheral arteries. The objective is both to quantitatively study the validity of different hypotheses required for a reliable application of the treatment with current techniques, and to contribute to the definition and the specification of a new optimized procedure taking into account the actual patient's vessel geometry. The detection of vascular luminal surface was performed by an image analysis process, i.e. virtual active navigation, applied to standard CT data. Dose distribution was calculated according to the formalism proposed and recommended by the AAPM in TG43 and TG60. A method combining simulated annealing and BFGS algorithms was applied to optimize the parameters associated with the dwell points such as their number, positions, and dwell times. Dose-surface histogram (DSH) was used to evaluate the dose distribution results. Four levels of accuracy in target surface description were tested. The application of this optimization method to four different CT data sets including patient data, phantom and animal models showed that the treatment plan can be improved when the actual vessel geometry has been taken into account.

1. Introduction

Intravascular brachytherapy (IVB) constitutes a new therapeutic solution to avoid iterative redilatations practiced after minimally invasive treatment of peripheral arterial stenoses. Following percutaneous transluminal angioplasty (PTA) procedure, IVB aims at preventing intimal hyperplasia / restenosis in a context which does not tolerate iatrogenic complications.

Less renarrowing of arteries as well as a reduced need for further treatment at the same site have been observed in patients with post-interventional restenosis which received radiation along with PTA. Liermann *et al.* **(1)** first described the feasibility of using IVB to actually inhibit restenosis in the femoro-popliteal setting. Wiedermann, Waksman, Mazur *et al.* **(2-4)** led their research groups respectively to study the feasibility and effectiveness of ¹⁹²I_r on vascular restenosis and showed a significantly smaller intimal proliferation and a prominent linear dose-response. Waksman *et al.* **(3)** performed endovascular beta radiation studies. The results have shown that the neo-intimal hyperplasia was decreased when radiation doses were higher than 5 Gy.

After the above animal experiments, several clinical studies on high dose-rate (HDR) remote afterloading intravascular brachytherapy were conducted. The studies were designed to assess the safety, feasibility and effectiveness of HDR intravascular brachytherapy in preventing post-PTA restenosis in the femoral-popliteal arteries. The results of phase 1 trials were encouraging. Li *et al.* (5, 6) studied the effects of guide wires and stents on dose distribution, Patel *et al.* (7) studied the implications of high beta and electron dose from ^{192}Ir .

Although its principle is known, the understanding of physiological effects as well as the implementation of IVB remain at a preliminary stage (8). Due to the use of a high activity source (^{192}Ir seed), specific delivery device and interventional environment are required. In actual treatment application the source is delivered using an HDR remote afterloader with a fixed step size, typically 5 mm, using either centered or non centered catheter. Moreover, peripheral arteries present some specific features compared with coronary arteries as for their shape, geometrical features (length, diameter, curvature) and the presence of surrounding anatomical structures. The particular problems to deal with concern the centering of the source inside the lumen, the good covering of the lesion after a transluminal angioplasty, the ray penetration, which has to reach the adventicia in order to be efficient while avoiding surrounding anatomical structures. Nevertheless, in most current IVB planning procedures, the lesion path is assumed to be a straight line and the dose prescription is specified with respect to the seed and the mean diameter of the artery. Since the dose distribution closely depends on the geometry of vasculature (9, 10), recent works, on intracoronary brachytherapy notably, have shown that the morphological characteristics of the vessel should be taken into account in the planning process. Intravascular ultrasound (IVUS) data were used to detect the inner surface of the vascular structure to irradiate (9, 11, 12).

This paper deals with the optimization of the treatment plan for IVB in peripheral arteries. CT data are used to describe 3D luminal surface and to define the target surface / volume. The objective is twofold: (a) to quantitatively study the validity of different approximation hypotheses in artery luminal surface description required for the application of the treatment in clinical routine with current techniques, and (b) to contribute to the definition and the specification of a new optimized procedure. In the proposed approach, the planning process is divided into two steps: (i) description of vessel luminal surface and centerline by virtual exploration of CT data, and (ii) optimization of the seed parameters based on a combination of simulated annealing and BFGS algorithms. The first step was presented in a previous work (13). We focus here on the optimization process in which the vessel surface morphology, the number of dwell points, the position and dwell time associated with each dwell point are taken into account.

2. Method and materials

2.1. Patient data description

In endovascular procedures, precise knowledge of geometrical parameters of the arteries and lesions is required to establish a precise planning of intervention. The geometrical description of vascular inner surface, which is used to define the target surface and thus the target volume to irradiate, is based on a virtual angiography like process applied to CT data. In this virtual exploratory navigation framework, the virtual angioscope constructs a geometrical model of the scene observed along its path. Visual information is augmented by a geometrical representation, allowing the computation of geometrical parameters featuring the internal lumen of the vessel and its lesion. The general framework, whose basic functions have already been reported in the literature (13), is summarized in the following.

Virtual image computation was performed according to a ray casting scheme integrating image analysis functions. The geometrical model of the virtual angioscope has been extended to include a quantification plane which allows it to construct, during the navigation, a precise surface description of the vascular structure (14).

The geometrical model considered for the virtual image computation was based on a perspective projection in which the focal length f defines the field of view and the optical center is located at the current position of the virtual endoscope. In addition to the virtual image formed by associating a projection ray to each pixel, a precise surface detection was carried out in the additional quantification plane, defined by the center and the optical axis of the virtual angioscope, and using only some uniformly distributed rays (typically 24). The surface points detected in the quantification plane and structured along the successive positions of the virtual sensor trajectory were used to form a polygonal mesh delimiting the vessel lumen. For each position of the trajectory, an operator calculates the geometrical center of the lumen section described by the contour detected in the quantification plane. If the trajectory is not centered, or if its orientation affects the mesh outcome, new displacement and orientation parameters are computed until the trajectory is centered in the vessel lumen. The output of navigation is a set of points representing the luminal surface, associated with the successive positions along the centered virtual path.

A virtual active navigation system for target surface reconstruction was developed on Windows platform. The user interface is presented in Fig. 1. An example of vascular inner surface description is illustrated in Fig. 2.

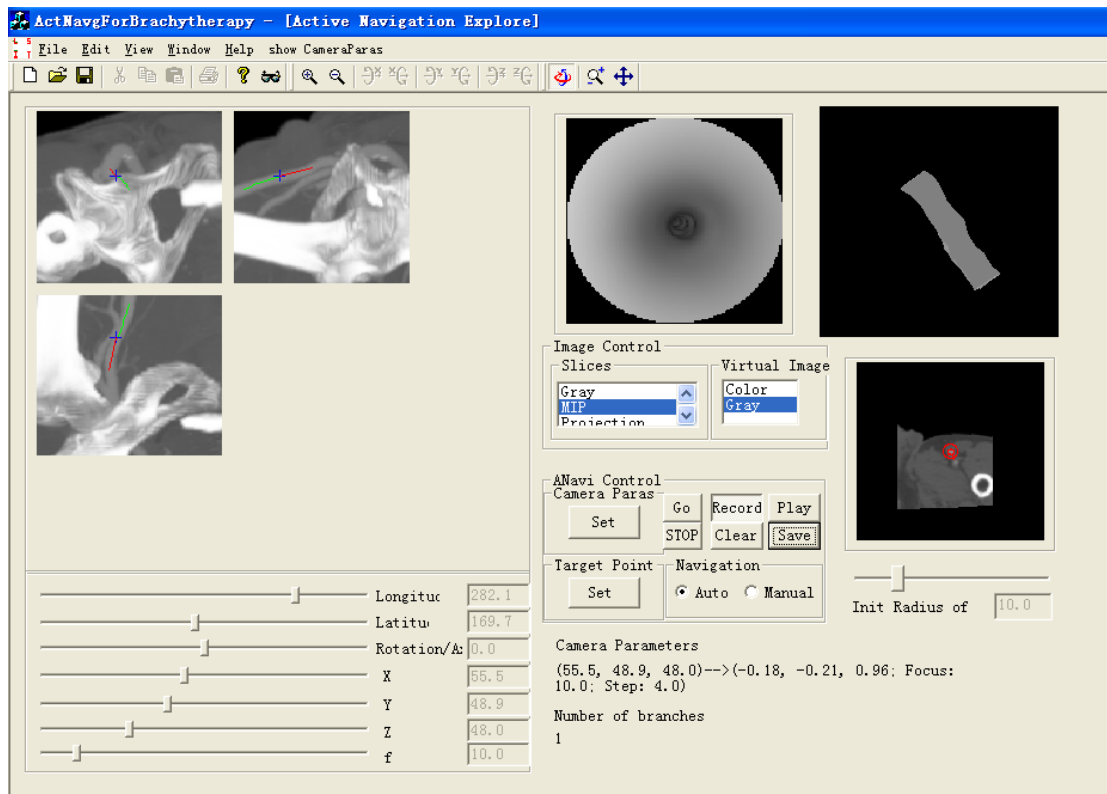


Fig. 1: Virtual navigation system for description of vascular luminal surface. Given a starting point and a target point by means of the position sliders (bottom left) the system automatically constructs the centerline and the luminal surface of the vessel. Top left: three orthogonal CT slices with the position of the virtual endoscope. Top right: the virtual endoscopy image, the reconstructed vascular surface and a reformatted CT slice.

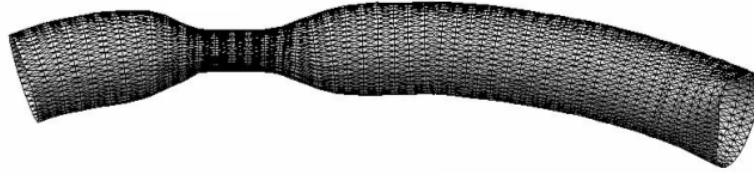


Fig. 2: Example of data description.

From this geometrical description of patient CT data (luminal surface and centerline of the vessel), four different types of target surface were considered for the dose prescription. They are illustrated by Fig. 3. The navigation trajectory which defines the centerline of the vessel as well as the 3D surface points belonging to the different section planes (quantification plane at different locations of the virtual sensor) were kept unchanged to constitute the set of surface points defining the most accurate target surface TS_1 . If r_{ij} denotes the distance of the j^{th} surface point P_{ij} to the center cp_i in the section plane Q_i , the dose is prescribed at $r_{ij} + \delta$, where δ is a parameter to be defined. The target surface TS_2 is defined by considering for each section plane the points P'_{ij} of polar coordinates (θ_{ij}, r_{ia}) , where r_{ia} is the average value of r_{ij} in Q_i . Concerning target surface TS_3 , the polar coordinates of the surface points are given by (θ_{ij}, r_a) , where r_a is the average value of all the radius r_{ia} in the different section planes Q_i . In the case of the less accurate target surface TS_4 , the centerline is transformed into a straight line by considering the reference point R_p (first point of the centerline). The surface points in each transformed section plane, located at point cp_i and orthogonal to the straight line, are given by $P''_{ij}(\theta_{ij}, r_a)$, where r_a is defined as in the case of TS_3 .

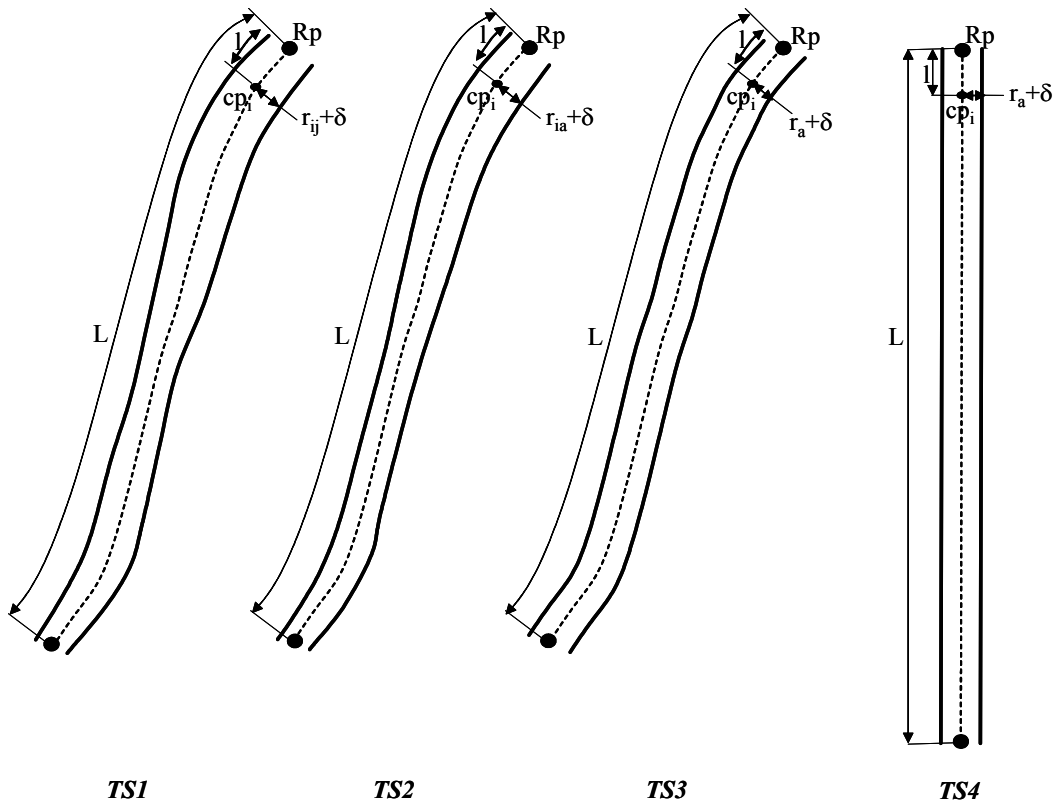


Fig. 3. Target surface cases for dose prescription.

2.2. Dose calculation formalism

To determine the parameters that may influence the treatment plan, it is first necessary to choose an appropriate model for computing the dose distribution at an arbitrary point. The standard Nucletron ^{192}Ir cylindrical seed we considered is 3.5 mm long and 0.6 mm in diameter, encapsulated in a 5.0 mm long \times 1.1 mm diameter stainless steel housing (15).

The computation of dose distribution often uses the basic dosimetry data, including dose rate constants, radial dose functions, and anisotropy functions as recommended in (8). According to the formalism proposed by the AAPM in TG43 (16) and TG60 (9), the dose distribution, for a cylindrically symmetric source, can be described in terms of a polar coordinate system with its origin at the source center where r is the distance to the point of interest and θ is the angle with respect to the long axis of the source. The dose rate, $D(r, \theta)$, at point (r, θ) , is defined as follows:

$$D(r, \theta) = S_k \cdot \Lambda_{r_0} [G(r, \theta) / G(r_0, \theta_0)] g_{r_0}(r) \cdot F(r, \theta) \quad (1)$$

where (r_0, θ_0) denotes the reference point that is chosen to lie on the transverse bisector of the source at a distance of $r_0 = 1$ cm for interstitial applications (TG43), and $r_0 = 2$ mm for intravascular applications (TG60) and $\theta_0 = \pi/2$; S_k is the air kerma strength of the source in units of U; Λ_{r_0} is the dose rate constant defined as the dose rate per unit air kerma strength along the transverse source bisector at the reference distance r_0 ; $G(r, \theta)$ is the geometry factor, $g_{r_0}(r)$ is the radial dose function, and $F(r, \theta)$ is the anisotropy function.

When the number of dwell points used in a treatment is N , the dose rate received at a point P is the weighting sum of $D(r, \theta)$:

$$I(P) = \sum_{j=1}^N w_j D(r_j, \theta_j) \quad (2)$$

where w_j corresponds to the dwell time of the j th position.

2.3. IVB planning optimization

In order to fit the calculated dose distribution to the dose prescribed according to the 3D surface description of the vessel wall, a quadratic, least-square objective function was used to optimize the irradiation parameters. Let X denotes the set of parameters to be optimized, we have:

$$\min f(X) = \alpha \sum_{i=1}^{N_T} (D_T - I(P_i))^2 + \beta \sum_{i=1}^{N_N} \delta(I(P_i) - D_N) (D_N - I(P_i))^2 \quad (3)$$

with
$$\delta(I(P_i) - D_N) = \begin{cases} 1 & \text{if } I(P_i) > D_N \\ 0 & \text{otherwise} \end{cases}$$

where N_T is the number of 3D surface sampled points in the lesion area; N_N is the number of 3D surface sampled points distributed on the normal tissues; D_T is the prescribed dose at the point P_i of the lesion surface; D_N is the prescribed dose at the point P_i of the normal surface; $I(P_i)$ is the calculated dose at point P_i . The coefficients α and β are the degree of desirability weighting factors for target points and normal or critical points, respectively.

To solve the optimization problem (3), we first transformed the parameter w_j to y^2 , as proposed by Cotrutz et al. (17), to limit the dwell times to be non-negative so that the problem (3) becomes an unconstrained optimization problem. A method combining simulated annealing algorithm and BFGS algorithm was used to optimize the number of seeds, the dwell position as well as the dwell time associated with each seed.

BFGS algorithm is an extension of Newton's method. In each step, the objective function is approximated by a second order Taylor polynomial and the displacement leading to the

unique stationary value (minimum or maximum) of the quadratic function is calculated directly. BFGS algorithm uses the same strategy but do not require the second order partial derivatives needed for the Taylor polynomial. These values are approximated using information from previous iterations. Quadratic convergence close to the maximum is guaranteed. Nevertheless, this kind of algorithm can meet some difficulties when the seed positions are constrained to be located on the vessel centerline. In the proposed approach, simulated annealing algorithm was used to compute the optimized seed positions along the centerline, whereas BFGS was used to determine the dwell times for a given number of seeds and dwell positions.

The range of the number of seeds depends on both the length of plan path, given here by the vessel centerline, and the seed length. Let L_s be the seed length, and L_p the plan path length, the number of seeds is assumed to vary from $L_p/(1.2*L_s)$ to $L_p/(0.8*L_s)$. For each given number of seeds, Eq. (3) was solved to determine the corresponding optimal solution regarding dwell positions and time parameters. Among all the solutions, the one fits best to the prescribed dose distribution was selected as the final result.

3. Results

In order to evaluate our methodology, we considered four data sets (Table 1) acquired from helical CT scanner: one from a phantom model showing an important narrowing (DS_1), one from patient iliac artery with no lesion (DS_2) and two from post-PTA sheep iliac artery (DS_3 , DS_4).

Data set	$N_x*N_y*N_z$; voxel size (mm)	L_p (cm)	L_p/L_s	AD (mm)
DS_1	256*256*251; 0.39	2.65	7.6	6.37
DS_2	128*128*182; 1.08	4.0	11.4	8.9
DS_3	170*170*335; 0.39	8.05	23.0	6.85
DS_4	140*140*336; 0.39	7.48	21.4	7.18

Table 1. Data sets used in the experiments. N_x , N_y , and N_z , the number of voxels along x , y , and z directions respectively, define the image volume size (IVS). L_p is the length of the seed path and the ratio L_p/L_s , with the seed length $L_s = 0.35$ cm, gives an indication on the possible number of seed points along the path. AD is the average diameter of the vasculare structure.

The geometrical description of vascular inner surface was detected automatically by active navigation (Fig. 4). In all the following experiments, the activity of the seed was set to the maximum possible value (10 ci or 370 Gb). To date, different dose prescriptions have been considered in clinical trials of peripheral IVB. In this study we adopted the dose prescription used in Vienna 4 and 5 (18) and LIMBER (8) clinical trials. A dose of 14 Gy was specified at a distance of $\delta = 2$ mm to each considered luminal surface points (radius + 2 mm). The main criteria considered to quantify the results of the planning process is the dose-surface histogram (DSH) which represents the dose homogeneity over the lesion area. The DSH is a useful alternative to the DVH for the dose distribution evaluation of a hollow organ (19). In all the following results, DSHs were obtained by computing the dose distribution on the actual target surface points (case TS_1 + a distance margin of $\delta = 2$ mm).

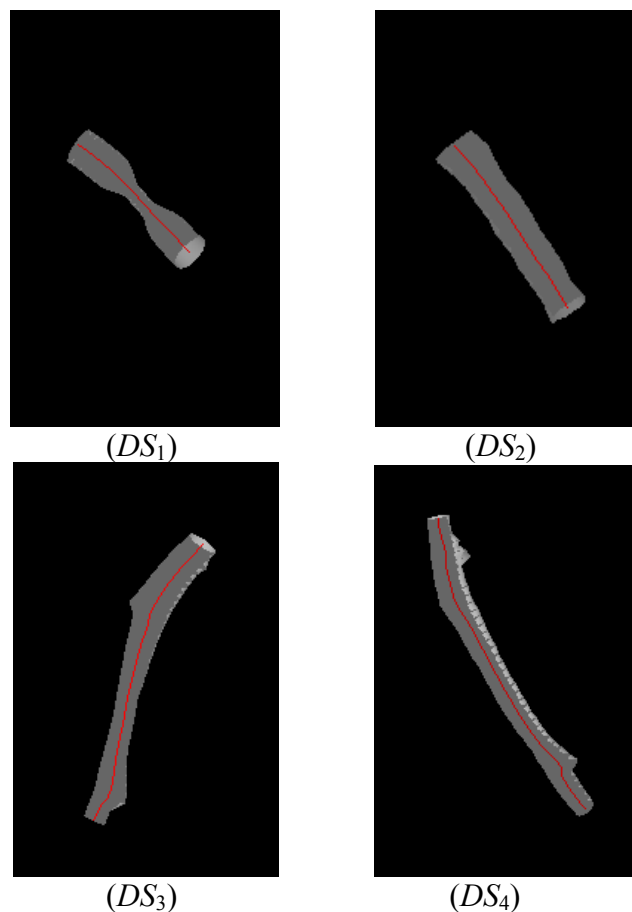


Fig. 4. Representation of the surface points and the centerlines for the different data sets.

3.1. Surface sampling

To study the effect of the number of surface points and of their distribution, the spatial configuration of the dwell points (number, positions) was fixed so that only the dwell times have to be estimated in the optimization process. The number of surface points in the quantification plane, i.e. on the contour of the lumen cross-section at a given position along the centerline, was set to 24. Considering the phantom data set DS_1 , this leads to a distance between surface points of about 1 mm. With a target surface description of type TS_2 , three different sampling rates of the centerline were considered, respectively 1 mm, 2 mm, and 4mm, leading to three different configurations of the surface sampling. The results presented in Fig. 5 show that DSH obtained with sampling of the centerline with both 1 mm and 2 mm gave better results than that with 4 mm; the result obtained with 1 mm gave just a little improvement than that with 2 mm. Thus, taking the computation time into consideration, sampling with 2 mm is a better choice.

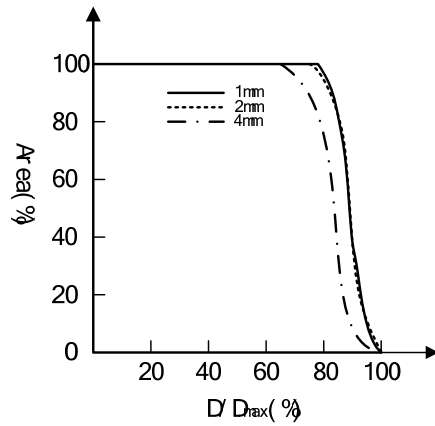


Fig. 5. Effect of surface sampling.

3.2. Optimization process

With a surface data composed of 24 points per each plane located along the centerline and a centerline sampling of 2 mm as mentioned in the previous subsection, this study is aimed at evaluating the best configuration of optimization parameters. The results reported below (Fig. 6) concern the above four data sets with a target surface description of type TS_2 . They were obtained by considering either equidistant dwell positions (number of dwell points and dwell times are optimized) or non-equidistant dwell positions (number of dwell points, dwell positions along the centerline and dwell times are optimized).

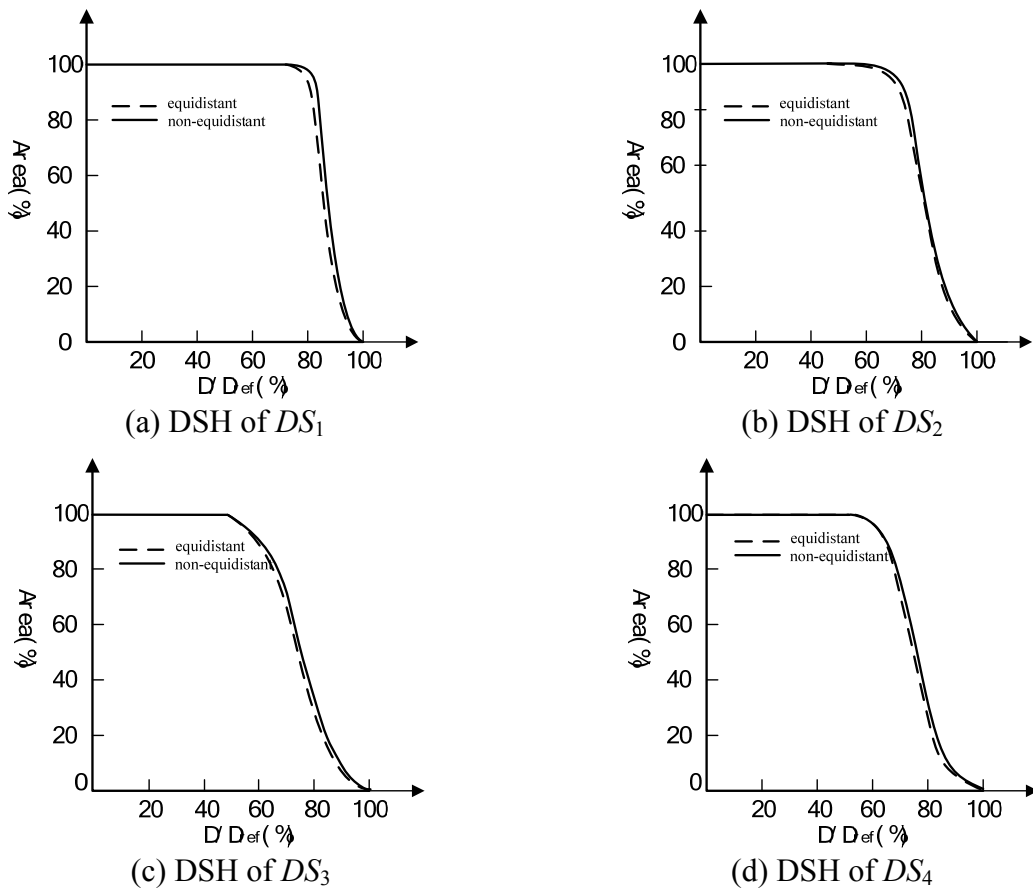


Fig. 6. DSHs obtained for different optimization configurations.

DSHs obtained with non-equidistant dwell positions show only a slight improvement of the results compared with equidistant dwell positions. Moreover, when non-equidistant

arrangement optimization is considered, it takes much more computation time. In the case of equidistant arrangement, only dwell time needs to be optimized for each given number of seeds, which could be solved by BFGS algorithm in a few seconds (from 1.2 s to 1.6 s for the considered data sets). However for non-equidistant arrangement, both dwell positions and dwell times need to be optimized for each given number of seeds, which must be optimized by combining simulated annealing and BFGS algorithms. This procedure may take hundreds of seconds (from 415 s to 657 s for the considered data sets). Thus, considering the balance of DSH results and computation time, we prefer to adopt equidistant arrangement.

3.3. Target surface and seed trajectory

Since too many dwell points and/or non-equidistant dwell positions can only improve the results a little as pointed out previously, leading to considerable increase of the computation time, an equidistance constraint on the dwell positions is here considered for each of the four data sets. The surface sampling configuration is the same as the one described in the previous section. According to these hypotheses, experimental tests (Fig. 7) have been performed to study the validity of the different possible assumptions regarding the type of target surface and seed trajectory (TS_1 , TS_2 , TS_3 , TS_4). The results show that optimization with TS_1 gives the best dose distribution, the dose distributions optimized with TS_2 are closed to that optimized with TS_1 , especially for the DS_1 data set. However, the dose distributions optimized with either TS_3 or TS_4 are far from those obtained with TS_1 .

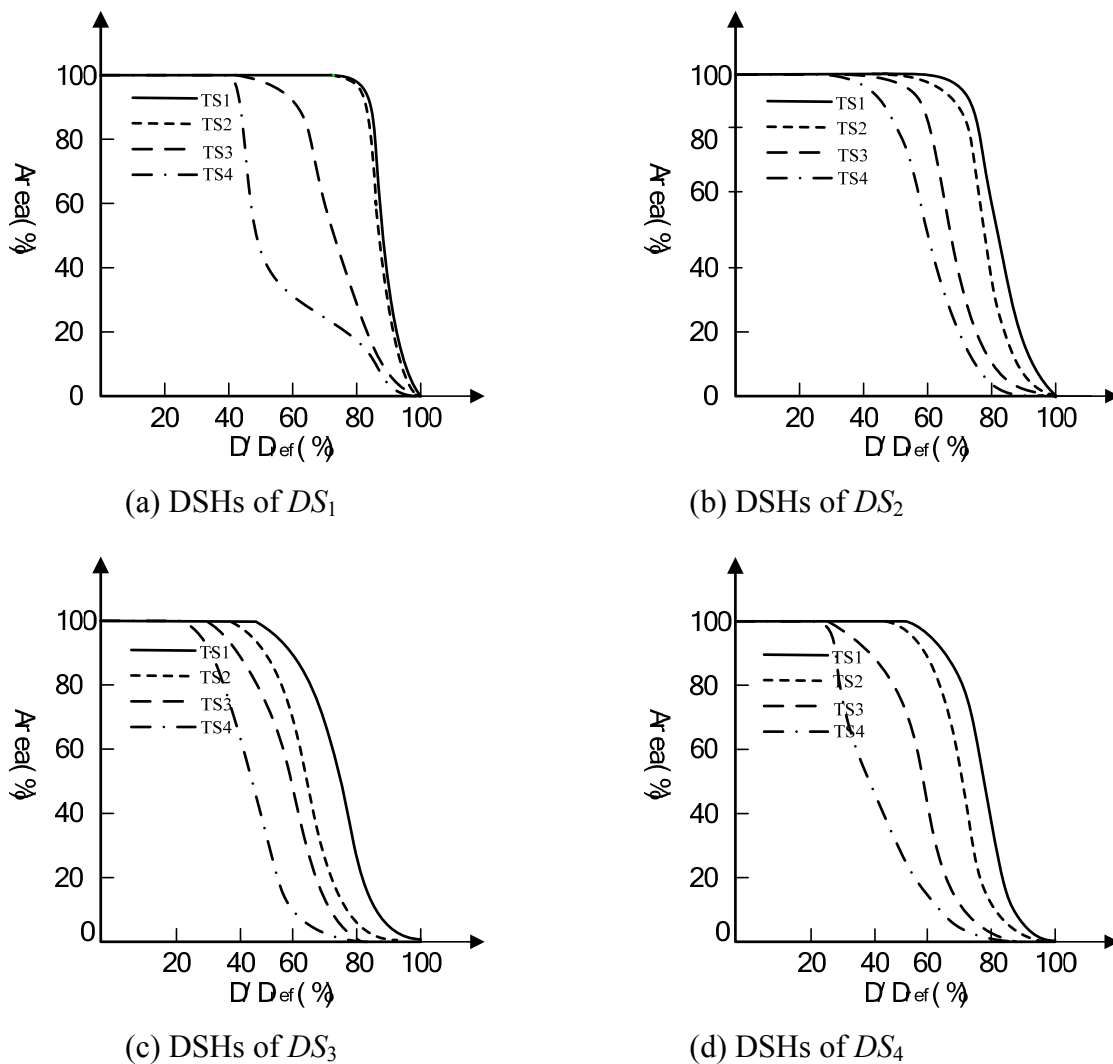


Fig. 7. Effect of target surface and seed trajectory.

4. Discussion

Although IVB has been deemed as a preferred treatment for coronary restenosis in clinical practice, the application of IVB in peripheral arteries remains at a preliminary stage. Computer assistance, integrating image processing, data registration, reconstruction and modelling, as well as optimization capabilities should constitute a solution to the achievement of peripheral IVB in clinical practice. Hence, some important issues have still to be considered, such as: (i) protocol definition, (ii) anatomical feature based dosimetric planning, (iii) treatment plan implementation, and (iv) evaluation.

In this study we focused on treatment planning optimization. In order to make the procedure more reliable and accurate, the geometry of the artery should be taken into consideration. The proposed approach combines luminal surface reconstruction from CT image analysis and optimization process.

Several kinds of parameters intervene in the proposed approach. They are related to (i) the surface points sampling in lesion area to treat and in critical healthy surrounding structures (*e.g.* ureter) which are not considered in this study, (ii) the optimization process which can include different unknown parameters such as the number of dwell points, the dwell positions and dwell times, and (iii) the type of target surface considered for dose prescription as well as the seed trajectory (from straight line assumption to actual vessel geometry).

Dose distributions for the different approximation hypotheses of the target surface have been studied systematically. Several data sets showing vessel of different morphological features (curvature, residual narrowing) have been considered. The study of the effect of the number of surface points and of their distribution shows that the best choice is to consider a regular sampling of the luminal surface, in other words, the distance between surface points in lumen cross-section has to be of the same order as the distance between the section planes. DSHs obtained on four data sets with a target surface description of type TS_2 by considering either equidistant positions (number of dwell points and dwell times are optimized) or non-equidistant positions (number of dwell points, dwell positions along the centerline and dwell times are optimized) show that non-equidistant arrangement does not lead to a significant improvement of the results. The tests of different target surface assumptions show that optimization with TS_1 gives the best dose distribution. The dose distributions optimized with TS_2 are close to those optimized with TS_1 , especially for the DS_1 data set where the lumen cross-section is quasi-circular. However, one can note that the dose distributions optimized with either TS_3 or TS_4 (the less accurate surface description) are far from those optimized with TS_1 (the most accurate surface description).

5. Conclusion

This study has shown that the planning of peripheral intravascular brachytherapy should take into consideration an accurate description of vessel actual morphology, a regular sampling of the target surface as well as an equidistant arrangement of dwell positions. As pointed out in this paper and in recent works (20) several issues have still to be considered to make IVB an efficient treatment in clinical practice. In order to implement the IVB treatment with current HDR remote afterloader and to apply it according to the proposed optimized planning, the intervention protocol will have to include a CT acquisition between PTA procedure and irradiation procedure, and an accurate intra-operative localization of the seed positions should be required (21). On a clinical point of view, further works and experiments

based on the proposed approach and dealing with the issue of surrounding structures could help to better define the target volume which is not yet fully and exactly known in peripheral IVB.

References

- [1] Liermann D, Bottcher HD, Kollath J. Prophylactic endovascular radiotherapy to prevent intimal hyperplasia after stent implantation in femoropopliteal arteries. *Cardiovasc Intervent Radiol* 1994; 17:12-16.
- [2] Wiedermann JG, Marboe C, Amols H, *et al.* Intracoronary irradiation markedly reduces restenosis after balloon angioplasty in a porcine model. *J Am Coll Cardiol* 1994; 23:1491-1498.
- [3] Waksman R, Robinson KA, Crocker IR, *et al.* Endovascular low-dose irradiation inhibits neointima formation after coronary artery balloon injury in swine: a possible role for radiation therapy in restenosis prevention. *Circulation* 1995; 91:1533-1539.
- [4] Mazur W, Ali NM, Dabaghi SF, *et al.* High dose rate intracoronary radiation suppresses neointimal proliferation in the stented and ballooned model of porcine restenosis. *Circulation* 1994; 90(suppl I):I-652.
- [5] Li XA, Shih R. Dose effects of guide wires for catheter-based intravascular brachytherapy. *Int J Radiat Oncol Biol phys* 2001; 51:1103-1110.
- [6] Li XA. Dose effects of stents in intravascular brachytherapy for in-stent restenosis: a monte carlo calculation. *Int J Radiat Oncol Biol phys* 2003; 55:842-848.
- [7] Patel NS, Chiu-Tsao ST, Ho Y, *et al.* High beta and electron dose from ¹⁹²Ir: implications for “Gamma” intravascular brachytherapy. *Int J Radiat Oncol Biol phys* 2002; 54:972-980.
- [8] Kirisits C, Pokrajac B, Berger D, *et al.* Treatment parameters for beta and gamma devices in peripheral endovascular brachytherapy. *Int J Radiat Oncol Biol phys* 2004; 60:1652-1659.
- [9] Nath R *et al.* Intravascular brachytherapy physics: Report of the AAPM Radiation Therapy Committee Task Group N° 60. *Med Phys* 1999; 26:119-152.
- [10] Wahle A, Lopez JJ, *et al.* Effects of vessel geometry and catheter position on dose delivery in intracoronary brachytherapy. *IEEE Trans Biomed Eng*, 2003; 50:1286-1295.
- [11] Roelandt JRTC, Mario C. di, *et al.* Three-dimensional reconstruction of intracoronary ultrasound images: rationale, approaches, problems and directions. *Circulation*, 1994; 90:1044-1055.
- [12] Wahle A, Lopez JJ, Pennington EC, *et al.* Estimating the actual dose delivered by intravascular coronary brachytherapy using geometrically correct 3-D modelling. *Medical Imaging 2003: Visualization, Image-Guided Procedures, and Display, SPIE Proceedings*, 2003;5029:129-137.
- [13] Haignon P, Bellemare ME, Acosta O, *et al.* Depth-map-based scene analysis for active navigation in virtual angiography, *IEEE Trans Med Imaging*, 2004;23:1380-1390.
- [14] Acosta O, Göksu C, Lucas A, *et al.* Geometrical description of anatomical structures based on virtual exploratory navigation, *Surgetica'2005, Grenoble, Sauramps Medical*, 2005:437-445.
- [15] Williamson JF, Li Z. Monte Carlo aided dosimetry of the microselectron pulsed and high dose-rate ¹⁹²Ir sources. *Med Phys* 1995; 22:809-819.
- [16] Nath R *et al.* Dosimetry of interstitial brachytherapy sources : Recommendations of the AAPM Radiation Therapy Committee Task Group N° 43. *Med Phys*, 1995; 22:209-234.
- [17] Cotrutz C, Lahanas M, Kappas C, Baltas D. A multiobjective gradient based dose optimization algorithm for conformal radiotherapy. *Phys Med Biol*, 2001;46:2161-2175.

- [18] Wolfram R, Pokrajac B, Ahmadi R, *et al.* Endovascular brachytherapy for prophylaxis against restenosis after long-segment femoropoplital stenting: Initial results. *Radiology*, 2001;220:724-729.
- [19] Lu Y, Li S, Spelbring D, *et al.* Dose-surface histograms as treatment planning tool for prostate conformal therapy. *Med Phys*, 1995; 22:279-284.
- [20] Weichert F, Müller H, Quast U, *et al.* Virtual 3D IVUS vessel model for intravascular brachytherapy planning. I. 3D segmentation, reconstruction, and visualization of coronary artery architecture and orientation. *Med Phys*, 2003; 30:2530-2536.
- [21] Bellec J, Manens JP, Göksu C, Moisan C, Haigron P, A study of dosimetric evaluation and feasibility of image guided intravascular brachytherapy in peripheral arteries; *MICCAI 2004, Lecture Notes in Computer Science*, Springer Verlag; 2004, 3217 : 1101-1102.