

Development of an odontoblast in vitro model to study dentin mineralization.

David Magne, Gilles Bluteau, Serena Lopez-Cazaux, Pierre Weiss, Paul Pilet, Helena Ritchie, Guy Daculsi, Jérôme Guicheux

► **To cite this version:**

David Magne, Gilles Bluteau, Serena Lopez-Cazaux, Pierre Weiss, Paul Pilet, et al.. Development of an odontoblast in vitro model to study dentin mineralization.. Connective Tissue Research, Taylor & Francis, 2004, 45 (2), pp.101-8. 10.1080/03008200490464839 . inserm-00175147

HAL Id: inserm-00175147

<https://www.hal.inserm.fr/inserm-00175147>

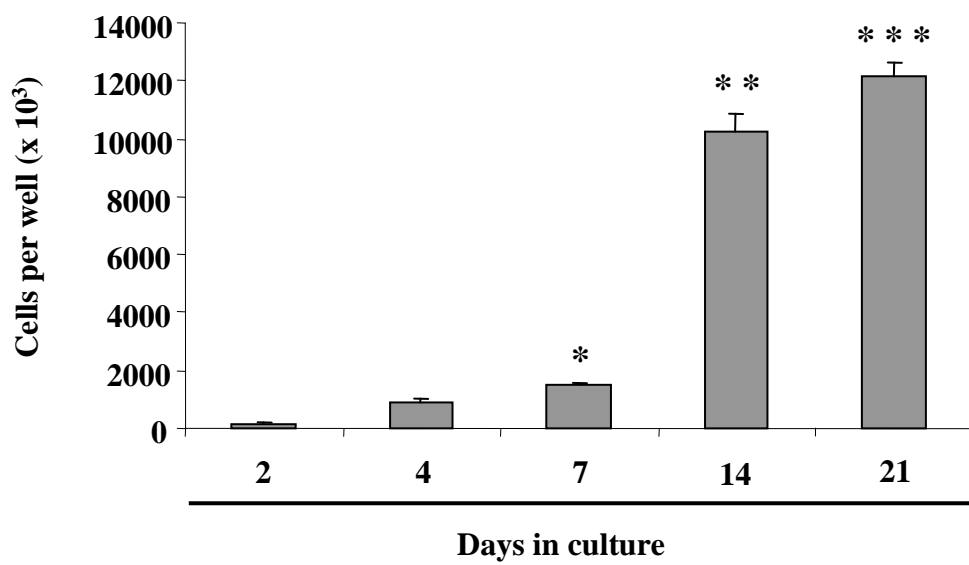
Submitted on 27 Sep 2007

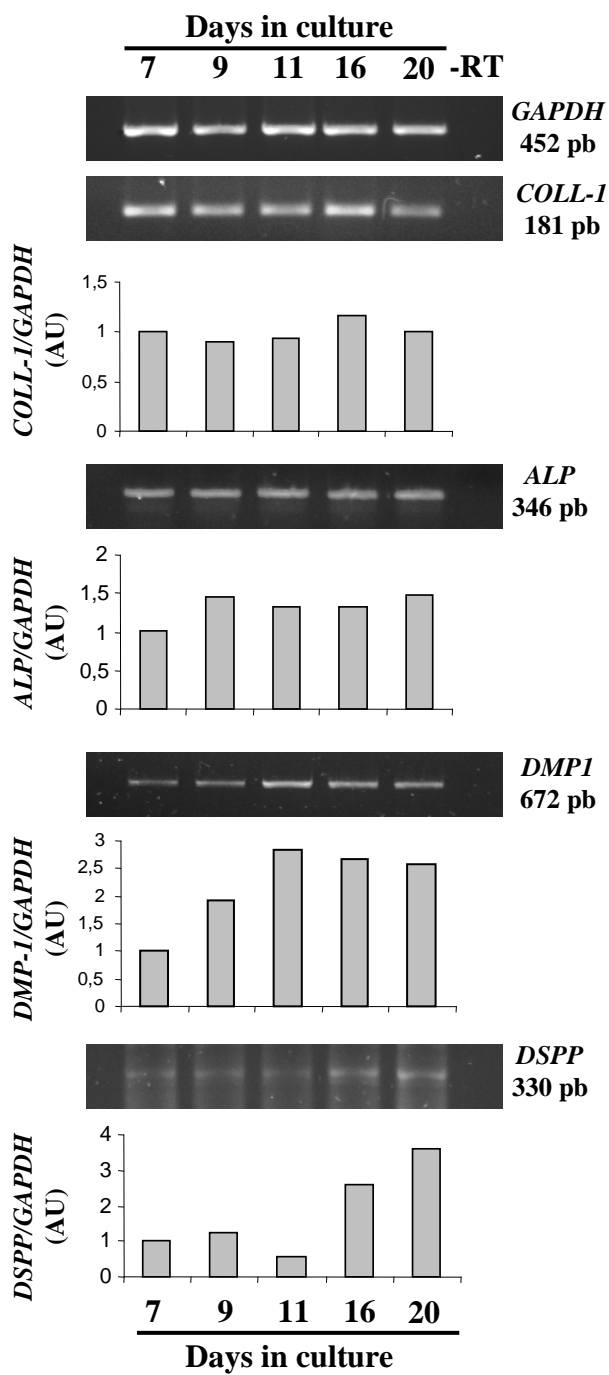
HAL is a multi-disciplinary open access archive for the deposit and dissemination of scientific research documents, whether they are published or not. The documents may come from teaching and research institutions in France or abroad, or from public or private research centers.

L'archive ouverte pluridisciplinaire **HAL**, est destinée au dépôt et à la diffusion de documents scientifiques de niveau recherche, publiés ou non, émanant des établissements d'enseignement et de recherche français ou étrangers, des laboratoires publics ou privés.

Name	Forward (F) and Reverse (R) sequence	T annealing	bp	reference
<i>GAPDH</i>	F 5'-ACC ACA GTC CAT GCC ATC AC-3' R 5'-TCC ACC ACC CTG TTG CTG TA-3'	62°C	452	(27)
<i>COLL-1</i>	F 5'-CCA ATC TGG TTC CCT CCC AC-3' R 5'-TGG TAA GGT TGA ATG CAC TT-3'	62°C	181	(28)
<i>ALP</i>	F 5'-CTT CTT GCT AGT GGA AGG-3' R 5'-CCT GGT AGT TGT TGT GAG-3'	51°C	346	unpublished
<i>DMP-1</i>	F 5'-GAA GAC TGT TAT CCT TAC G-3' R 5'-GTG ATC CCC TTT AGA TTC C-3'	62°C	672	(27)
<i>DSPP</i>	F 5'-CAC ATC CAG GAA CCG CAG CAC-3' R 5'-CCT TAC TCT CCT TTG CCT C-3'	60°C	330	(29)

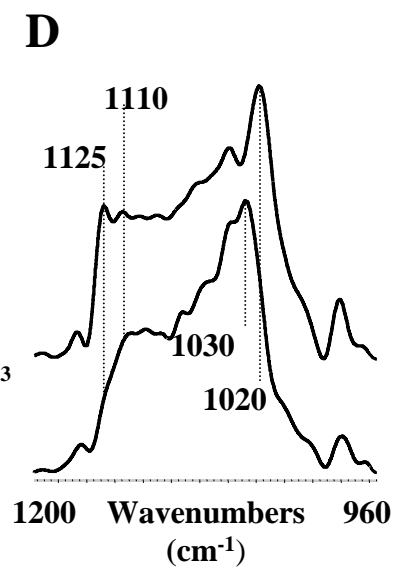
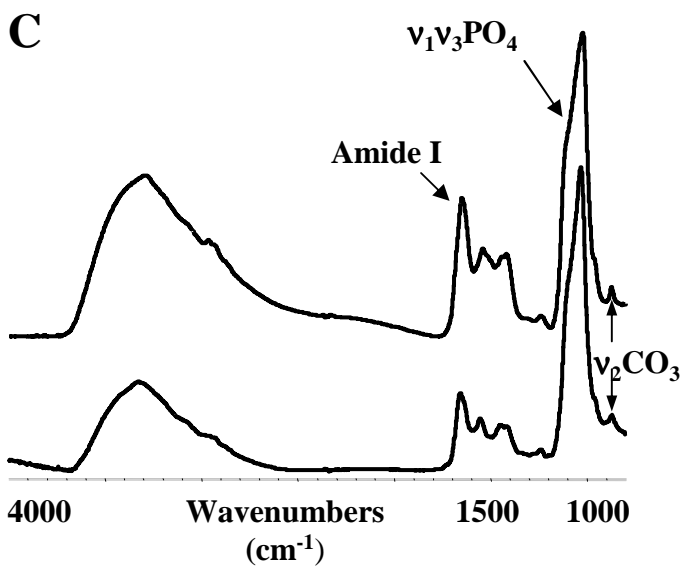
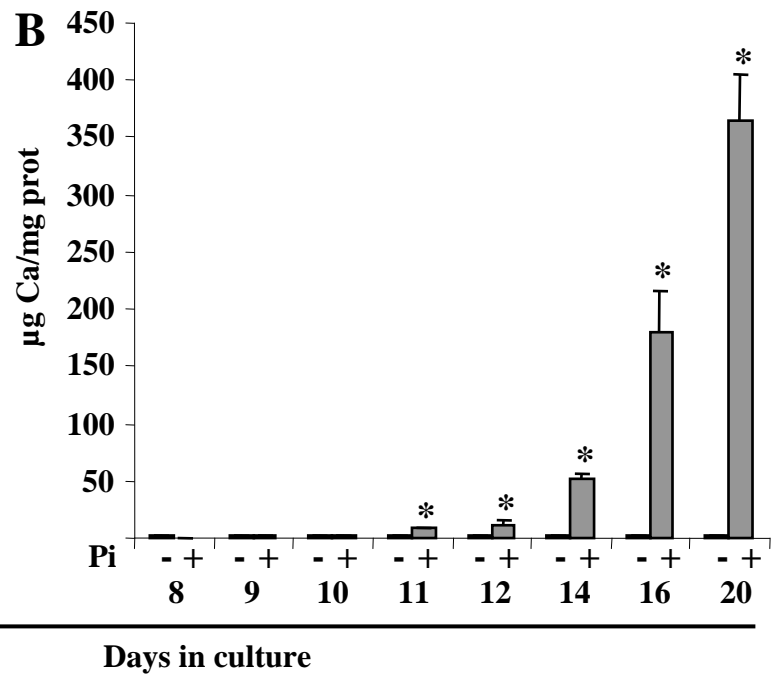
Table 1: primers used for RT-PCR analysis (sequences, annealing temperature (T), size of PCR products (bp), and reference, GAPDH: glyceraldehyde phosphate dehydrogenase, ALP: alkaline phosphatase, DMP-1: dentin matrix protein 1, DSPP: dentin sialophosphoprotein).

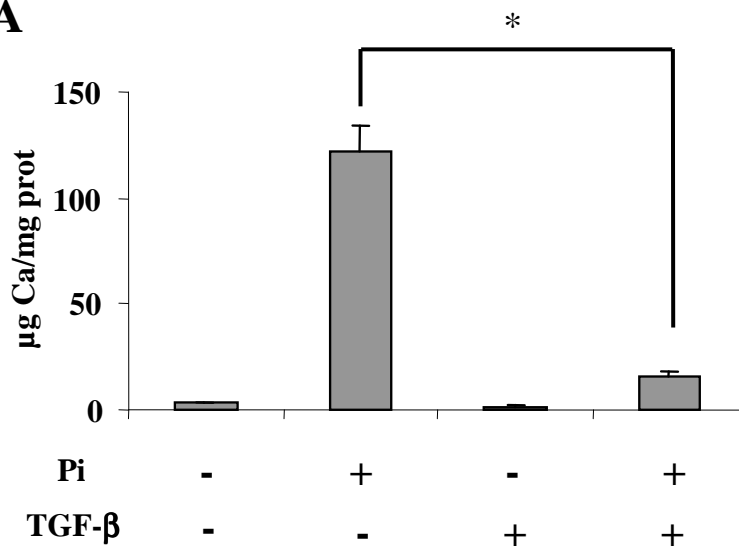






28



A**B**