

Expression of estrogen receptor beta in prostate carcinoma cells inhibits invasion and proliferation and triggers apoptosis.

Jennifer Cheng, Eun Jig Lee, Laird Madison, Gwendal Lazennec

► **To cite this version:**

Jennifer Cheng, Eun Jig Lee, Laird Madison, Gwendal Lazennec. Expression of estrogen receptor beta in prostate carcinoma cells inhibits invasion and proliferation and triggers apoptosis.. FEBS Letters, Wiley, 2004, 566 (1-3), pp.169-72. 10.1016/j.febslet.2004.04.025 . inserm-00143968

HAL Id: inserm-00143968

<https://www.hal.inserm.fr/inserm-00143968>

Submitted on 30 Apr 2007

HAL is a multi-disciplinary open access archive for the deposit and dissemination of scientific research documents, whether they are published or not. The documents may come from teaching and research institutions in France or abroad, or from public or private research centers.

L'archive ouverte pluridisciplinaire **HAL**, est destinée au dépôt et à la diffusion de documents scientifiques de niveau recherche, publiés ou non, émanant des établissements d'enseignement et de recherche français ou étrangers, des laboratoires publics ou privés.

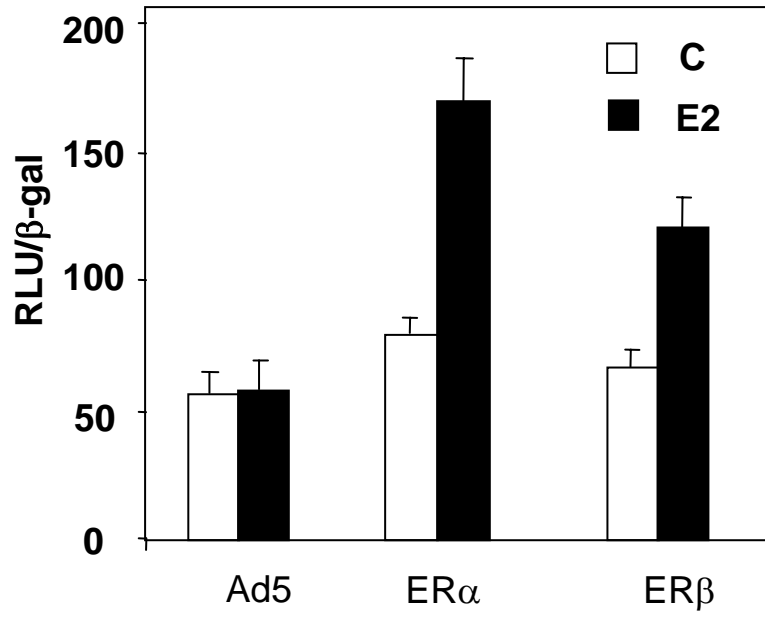
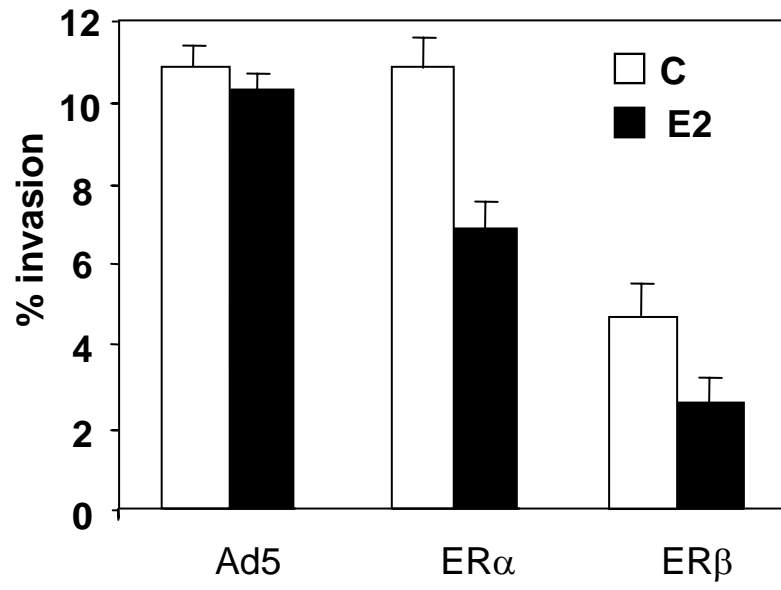
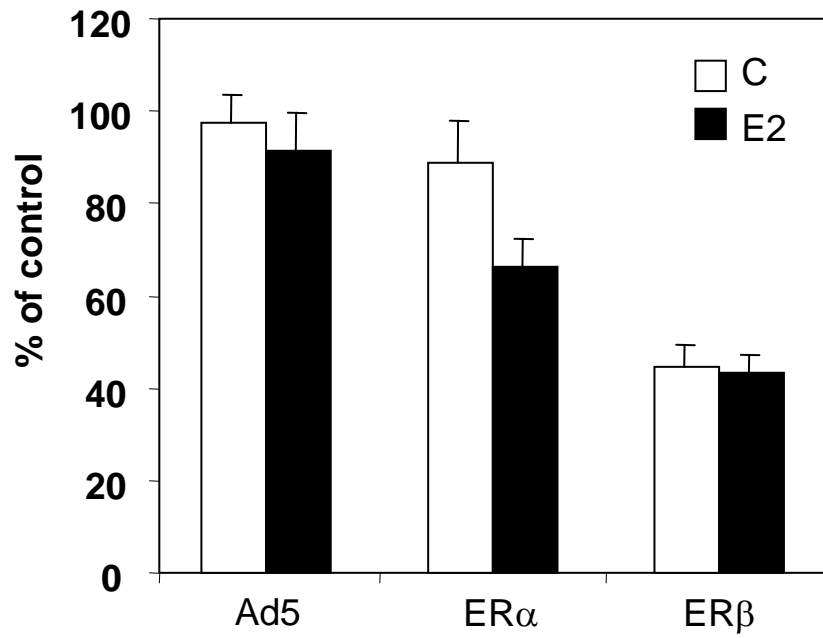


Figure 1

A**B****Figure 2**

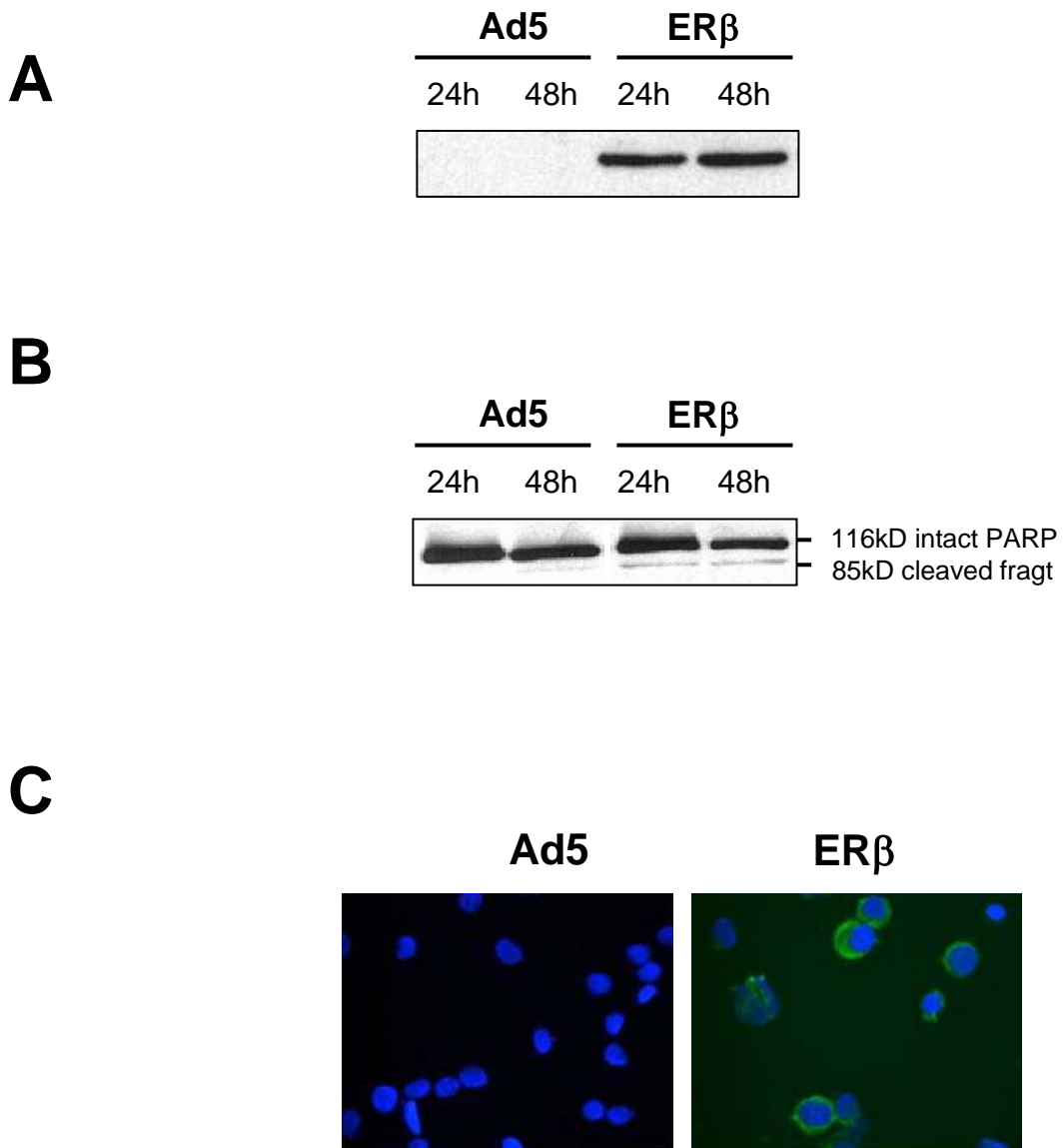


Figure 3