

## **Ribosome-translocon complex mediates calcium leakage from endoplasmic reticulum stores.**

Fabien Van Coppenolle, Fabien Vanden Abeele, Christian Slomianny, Matthieu Flourakis, John Hesketh, Etienne Dewailly, Natalia Prevarskaya

► **To cite this version:**

Fabien Van Coppenolle, Fabien Vanden Abeele, Christian Slomianny, Matthieu Flourakis, John Hesketh, et al.. Ribosome-translocon complex mediates calcium leakage from endoplasmic reticulum stores.. Journal of Cell Science, Company of Biologists, 2004, 117 (Pt 18), pp.4135-42. <10.1242/jcs.01274>. <inserm-00137717>

**HAL Id: inserm-00137717**

**<http://www.hal.inserm.fr/inserm-00137717>**

Submitted on 15 Jan 2010

**HAL** is a multi-disciplinary open access archive for the deposit and dissemination of scientific research documents, whether they are published or not. The documents may come from teaching and research institutions in France or abroad, or from public or private research centers.

L'archive ouverte pluridisciplinaire **HAL**, est destinée au dépôt et à la diffusion de documents scientifiques de niveau recherche, publiés ou non, émanant des établissements d'enseignement et de recherche français ou étrangers, des laboratoires publics ou privés.

# Ribosome-translocon complex mediates calcium leakage from endoplasmic reticulum stores

Fabien Van Coppenolle<sup>1,\*</sup>, Fabien Vanden Abeele<sup>1,\*</sup>, Christian Slomianny<sup>1</sup>, Matthieu Flourakis<sup>1</sup>, John Hesketh<sup>2</sup>, Etienne Dewailly<sup>1</sup> and Natalia Prevarskaya<sup>1</sup>

<sup>1</sup>Laboratoire de Physiologie Cellulaire, INSERM EMI 0228, Université de Lille 1, Bâtiment SN3, 59655 Villeneuve d'Ascq CEDEX, France

<sup>2</sup>School of Cellular and Molecular Biosciences, University of Newcastle, Agriculture Building, Kings Road, Newcastle-upon-Tyne, NE1 7RU, UK

\*These authors contributed equally to this work

†Author for correspondence (e-mail: fvan Copp@pop.univ-lille1.fr)

Accepted 19 April 2004

Journal of Cell Science 117, 4135-4142 Published by The Company of Biologists 2004  
doi:10.1242/jcs.01274

## Summary

Under resting conditions, the endoplasmic reticulum (ER) intraluminal free calcium concentration ( $[Ca^{2+}]_{ER}$ ) reflects a balance between active uptake by  $Ca^{2+}$ -ATPases and passive efflux via 'leak channels'. Despite their physiological importance and ubiquitous leak pathway mechanism, very little is known about the molecular nature of these channels. As it has been suggested that the open translocon pore complex of the ER is permeable to ions and neutral molecules, we hypothesized that the ribosome-bound translocon would be permeable to calcium after treatment with puromycin, a translation inhibitor that specifically releases polypeptide chains. At this time, the translocon channel is left open. We measured the fluctuations in cytoplasmic and luminal calcium concentrations using fluorescent dyes (fura-2 and mag-fura-2, respectively). The calcium release induced by

thapsigargin (a  $Ca^{2+}$ -ATPase inhibitor) was lower after puromycin treatment. Puromycin also reduced the  $[Ca^{2+}]_{ER}$  level when perfused into the medium, but was ineffective after anisomycin pre-treatment (an inhibitor of the peptidyl transferase). Puromycin had a similar effect in the presence of heparin and ryanodine. This puromycin-evoked  $[Ca^{2+}]_{ER}$  decrease was specific to the translocon. We conclude that the translocon complex is a major calcium leak channel. This work reveals a new role for the translocon which is involved in the control of the  $[Ca^{2+}]_{ER}$  and could therefore supervise many physiological processes, including gene expression and apoptosis.

Key words: Prostate cancer, Translocon, Puromycin, Calcium leak, Endoplasmic reticulum, LNCaP cells

## Introduction

The endoplasmic reticulum (ER) plays an essential role in the folding and maturation of proteins and is also the largest calcium store (Berridge and Irvine, 1989; Pozzan et al., 1994). It has previously been demonstrated that the ER is a continuous calcium pool in mouse acinar pancreatic cells (Mogami et al., 1998; Park et al., 2000). Agonist-induced ER calcium release occurs through  $Ca^{2+}$  channels such as inositol triphosphate ( $IP_3$ ) and ryanodine receptors (Clapham, 1995) and may be potentiated by nicotinic acid adenine dinucleotide phosphate (NAADP) (Cancela et al., 2002). Calcium reuptake into intracellular stores occurs when the calcium release channels are closed (calcium negative feedback to the  $IP_3$  receptor) (Bezprozvanny et al., 1991) and is carried out by SERCA pumps (sarco-endoplasmic reticulum  $Ca^{2+}$ -ATPases) (Pozzan et al., 1994). In the resting state, the  $Ca^{2+}$  content of the ER reflects a balance between this active uptake by SERCA and passive efflux or 'basal leak' through previously identified 'leak channels'. This leakage is revealed when SERCA pumps are inhibited by thapsigargin or CPA (Hofer et al., 1996; Mogami et al., 1998). The physical structure of calcium leak channels has not yet been elucidated. Recently, interesting research (Heritage and Wonderlin, 2001; Roy and Wonderlin, 2003) has demonstrated that a polarized molecule could cross the endoplasmic membrane through the translocon (Simon and

Blobel, 1991), which is the complex involved in protein translocation. The translocon may therefore be permeable to calcium. In yeast and mammalian cells (Deshaies and Schekman, 1987; Gorlich et al., 1992b; Gorlich and Rapoport, 1993; Stirling et al., 1992), the translocon is formed by the association of heterotrimeric proteins Sec61 $\alpha$ , Sec61 $\beta$ , and Sec61 $\gamma$  (Gorlich et al., 1992a) and other proteins including TRAM (translocation-associated membrane protein), BiP, calnexin, calreticulin, and Erp57 (for reviews, see Johnson and van Waes, 1999; Schnell and Hebert, 2003).

Electrophysiological studies have demonstrated that the translocon is a protein-conducting channel (Simon and Blobel, 1991), with a 4-6 nm pore diameter when bound to the ribosome (Hamman et al., 1997). The ribosome-free translocon has a 0.9-1.5 nm pore diameter (Hamman et al., 1998). This pore was visualized in electron microscopy using purified yeast Sec61 complex (Beckmann et al., 1997) with a 9.5 nm outer diameter. In mouse acinar pancreatic cells, we have demonstrated that puromycin induces a decrease in the endoplasmic reticulum calcium concentration ( $[Ca^{2+}]_{ER}$ ) (Lomax et al., 2002). Puromycin conformation is similar to the 3' end of aminoacylated tRNA. It terminates the peptide chain elongation and clears the protein from the translocon pore (Pestka, 1974; Pestova et al., 2001). At this point, the ribosome is still on the translocon.

In this study, we demonstrate the role of the translocon as a calcium leak channel. Puromycin induces a calcium leak from the ER and decreases the thapsigargin response. Cycloheximide, an inhibitor of the elongation factor 2 (that does not release the nascent peptide chain) (Roy and Wonderlin, 2003), was unable to modify the  $[Ca^{2+}]_{ER}$ . Thus, the puromycin-evoked calcium leak results from its direct effect on the ribosome-translocon complex rather than inhibition of protein synthesis.

We also verified that the decrease in the ER calcium content induced by puromycin, was specific to its action on the translocon process. Puromycin was unable to induce a calcium release after anisomycin application (an inhibitor of the peptidyl transferase) (Ioannou et al., 1998). Furthermore, we demonstrate that puromycin does not induce a calcium release through the IP<sub>3</sub> and ryanodine receptors. We also verified that the NAADP-induced calcium release was not affected by puromycin.

Using confocal microscopy on LNCaP cells, we observed a decrease in the colocalization between the 60 S ribosome subunit and the Sec61 protein in the translocon pore in cells treated with puromycin. We made similar observations in electron microscopy. This implies that even a small number of open translocon is sufficient to develop a calcium leak capable of decreasing the  $[Ca^{2+}]_{ER}$ .

This study is the first to demonstrate that a passive calcium leak may occur specifically via the translocon during translation. This is a ubiquitous phenomenon and may influence the filling state of internal calcium stores, causing a modification in calcium signaling and cellular physiology.

## Materials and Methods

### Fluorescence measurements of $[Ca^{2+}]_c$ and $[Ca^{2+}]_{ER}$

Cytoplasmic calcium concentration ( $[Ca^{2+}]_c$ ) was measured using fura-2 using previously described methods (Vanden Abeele et al., 2002). The cells were continuously perfused with HBSS solution (120 mM NaCl; 5 mM KCl; 2 mM CaCl<sub>2</sub>; 2 mM MgCl<sub>2</sub>; 5 mM Glucose; 10 mM HEPES, pH 7.3) and chemicals were added via a whole-chamber perfusion system. The flow rate of the perfusion system was set to 1 ml/minute and the chamber volume was 500  $\mu$ l.

For Ca<sup>2+</sup> imaging within the ER, LNCaP cells (ATTC, Rockville, MD) were grown on glass cover slips and loaded with 2  $\mu$ M of the AM-ester derivative of mag-fura-2 (Molecular Probes, Leiden, The Netherlands), or 5  $\mu$ M of mag-fluo-4 AM (Molecular Probes, Leiden, The Netherlands) for 45 minutes at 37°C. After incubation with dye, the plasma membrane was then selectively permeabilized: cells were rinsed briefly in a high K<sup>+</sup> solution (125 mM KCl, 25 mM NaCl, 10 mM HEPES and 0.1 mM MgCl<sub>2</sub>, pH 7.2), exposed for 2 minutes to an 'intracellular buffer' at 37°C after which 5 mg/ml digitonin was added. Permeabilized cells were continuously perfused with 'intracellular buffer' (the same solution without digitonin, supplemented with 0.2 mM MgATP, with free  $[Ca^{2+}]$  clamped to 170 nM using Ca<sup>2+</sup>/EGTA buffers). Ratio imaging measurements of mag-fura-2 fluorescence were made using a commercial imaging system (Princeton Instruments, Evry, France). Ratio imaging measurements of mag-fluo-4 were made using a confocal microscope (LSM 510, Zeiss, Le Pecq, France).

### Confocal microscopy and colocalization

LNCaP cells were grown on cover slips and treated with puromycin as described below. Samples were fixed with cold acetone (-20°C) for

15 minutes and blocked with 1.2% gelatine in PBS (PBSG) for 30 minutes to avoid non-specific binding. They were subsequently incubated in a moist chamber for 1 hour at 37°C with the primary antibodies for Sec61 (goat polyclonal from Santa Cruz) and 60S ribosomal subunit (rabbit polyclonal) (Horne and Hesketh, 1990). After several washes in PBSG, the cover slips were incubated for 1 hour at 37°C with the corresponding secondary antibodies (donkey anti-goat labelled with Texas Red X (Chemicon) and donkey anti-rabbit labelled with FITC, Jackson), washed in PBS and mounted in Mowiol. Fluorescence analysis was carried out using a Zeiss LSM 510 confocal microscope (488 nm excitation for FITC and 563 nm for Texas Red) connected to a Zeiss Axiovert 200 M with a  $\times$ 63 1.4 numerical aperture oil immersion objective. Both channels were excited, collected separately and then merged to examine colocalization. The image acquisition characteristics (pinhole aperture, laser intensity, scan speed, etc.) were the same throughout the experiments to ensure the comparability of the results. Using confocal microscope software (AIM 3.2, Zeiss, Le Pecq, France) we calculated the colocalization coefficients as defined (Manders et al., 1993). This process calculates the sum of the colocalized pixels (labeled in red and green) divided by the total number of labeling pixels. The maximal coefficient of colocalization is therefore 1.

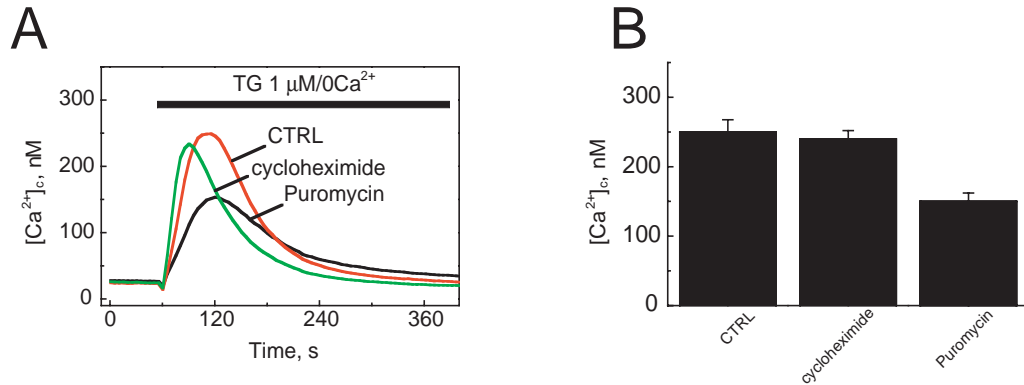
### Electron microscopy

The cell pellets were fixed in 2.5% glutaraldehyde in 0.1 M cacodylate buffer, pH 7.4, for 30 minutes at 4°C, thoroughly washed in the same buffer, post-fixed in 1% osmium tetroxide in the same buffer for another 30 minutes at 4°C, washed and subsequently processed for embedding in Epon resin. The samples were cut on a Reichert Ultracut E and the section contrasted with lead citrate and uranyl acetate. The grids were then observed on a Hitachi H600 transmission electron microscope.

## Results

### Thapsigargin-induced calcium release is lower after puromycin treatment

To study the possible involvement of translocon in calcium leakage, we first treated the LNCaP cells with puromycin (200  $\mu$ M) or cycloheximide (1.8 mM) for 1 hour, or kept them in the medium alone (Fig. 1). In order to estimate the ER calcium content, we used thapsigargin (1  $\mu$ M), which irreversibly blocks SERCA pumps and induces Ca<sup>2+</sup> mobilization. We measured the passive calcium leak using the fura-2 (2  $\mu$ M) calcium cytoplasmic probe in a Ca<sup>2+</sup>-free medium. The peak increase in cytoplasmic calcium concentration ( $[Ca^{2+}]_c$ ) induced by thapsigargin is therefore proportional to the initial calcium content of the endoplasmic reticulum. Fig. 1A shows the time course of a typical thapsigargin response in a calcium-free medium. The peak was 250 nM under control conditions and 230 nM after a 1-hour incubation with cycloheximide. Cells treated with puromycin showed a decrease in the thapsigargin response (150 nM). These mean differences are shown in Fig. 1B, which illustrates the peak value of the thapsigargin-evoked  $[Ca^{2+}]_c$  increase. Under control conditions, the peak  $[Ca^{2+}]_c$  value was 250 $\pm$ 17.5 nM ( $n=34$ ) and the response to thapsigargin of cycloheximide-incubated LNCaP cells was not statistically different (240 $\pm$ 12 nM;  $n=35$ ). In contrast, in puromycin-treated cells, the ER calcium content decreased by 40% compared to levels under control conditions and 37.5% compared to levels in cycloheximide-treated cells (150 $\pm$ 12 nM;  $n=78$ ).



**Fig. 1.** Puromycin treatment reduces the thapsigargin-induced calcium release from the ER. (A) Traces represent the  $[Ca^{2+}]_c$  measured in 2  $\mu$ M fura-2 AM loaded LNCaP cells under control conditions or after a 1-hour incubation with 200  $\mu$ M puromycin or 1.8 mM cycloheximide. Application of 1  $\mu$ M thapsigargin (TG) produced an increase in  $[Ca^{2+}]_c$  as a result of the inhibition of SERCA pumps. All measurements were made at room temperature in  $Ca^{2+}$ -free HBSS. (B) Means of the peak values of thapsigargin responses under control conditions ( $n=34$ ), with 1.8 mM cycloheximide ( $n=35$ ) and with 200  $\mu$ M puromycin ( $n=78$ ).

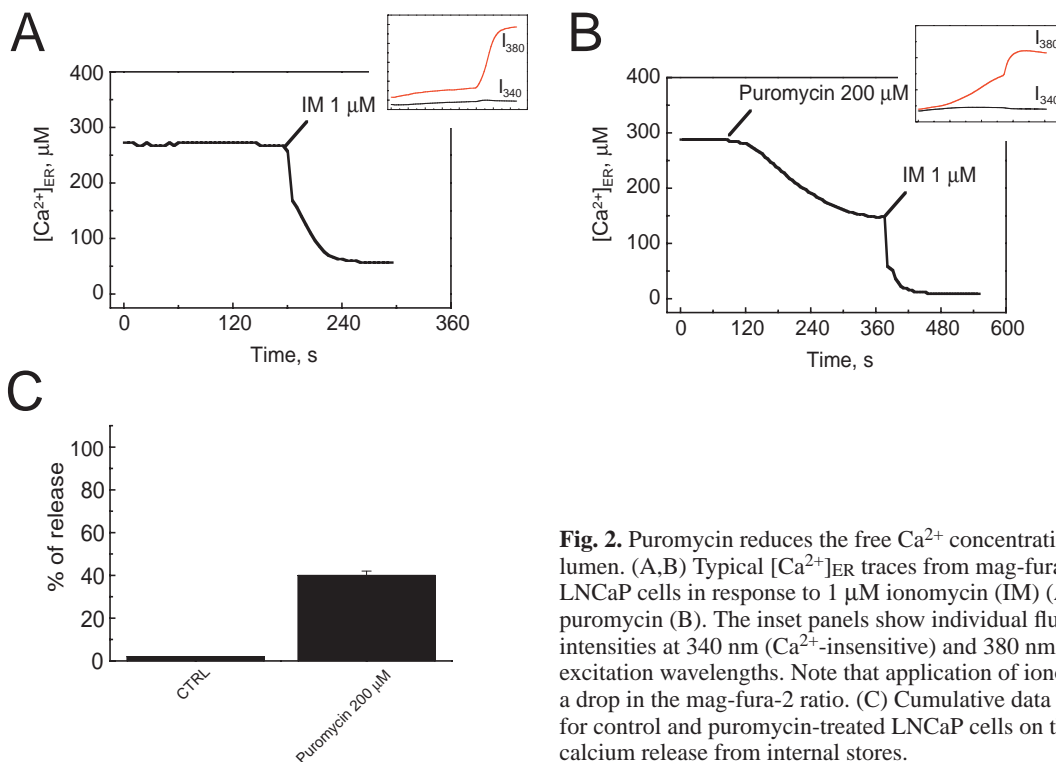
### Puromycin induces a luminal calcium leak through the translocon

The ER  $Ca^{2+}$  content was further investigated using the compartmentalized fluorescent  $Ca^{2+}$  indicator, mag-fura-2 AM, which we had previously used for direct measurements of  $[Ca^{2+}]_{ER}$  in LNCaP cells (Vanden Abeele et al., 2002). Imaging experiments with mag-fura-2 AM were conducted after digitonin permeabilization. As shown in Fig. 2A, ionomycin (1  $\mu$ M) induced a decrease in  $[Ca^{2+}]_{ER}$  from 263  $\mu$ M to 58  $\mu$ M ( $-78\%$ ). The inset panels in Fig. 2A,B show the significant time course development of emission fluorescence from 340 nm and 380 nm excitation. Puromycin perfusion (200  $\mu$ M) induced an 46% decrease in  $[Ca^{2+}]_{ER}$  (Fig. 2B). After

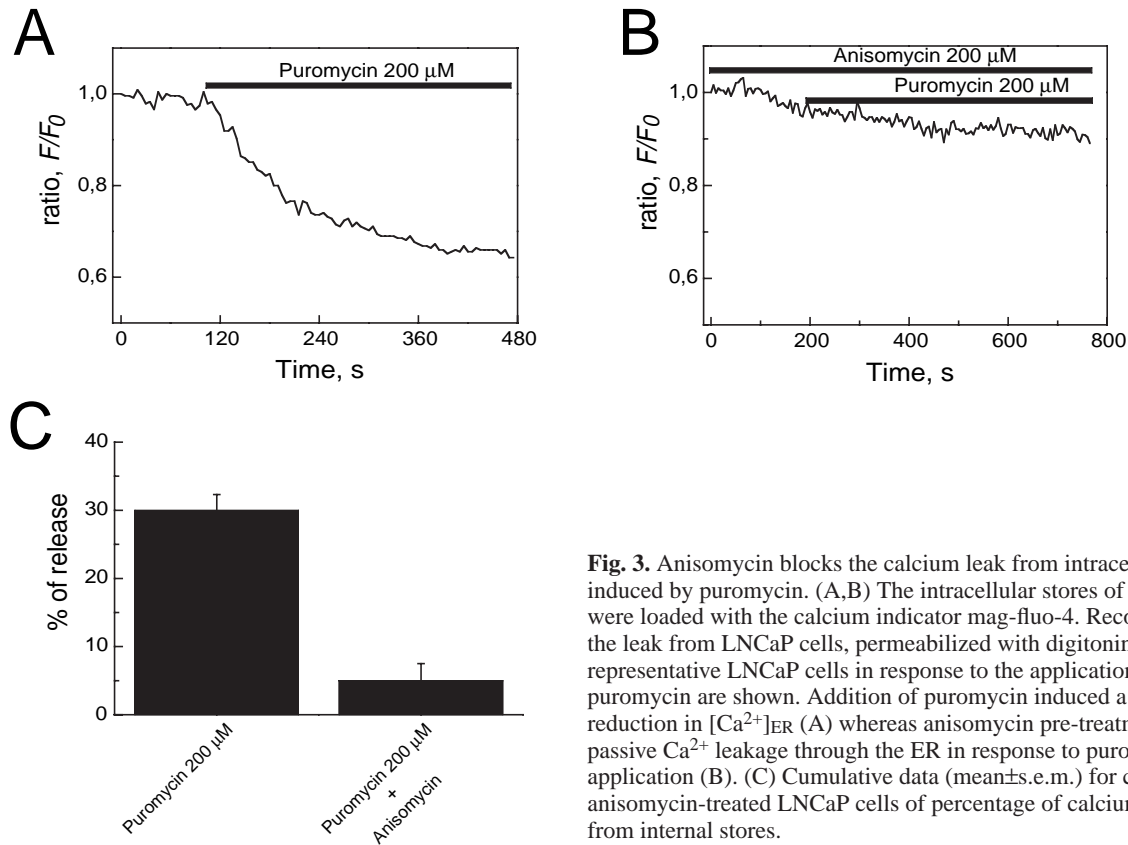
puromycin treatment, the calcium store was almost empty but ionomycin induced a decrease, from 152  $\mu$ M to 18  $\mu$ M (Fig. 2B). Fig. 2C illustrates the cumulative data before and after puromycin perfusion. The mean decrease was  $39.95 \pm 2.16\%$  ( $n=26$ ). A 20- $\mu$ M puromycin concentration also induced a decrease in  $[Ca^{2+}]_{ER}$ . Under these conditions the percentage of response was 30% with a mean decrease of  $18.51 \pm 5.32\%$  ( $n=15$ ; data not shown).

### Anisomycin prevents puromycin-induced luminal calcium release

To be sure that puromycin induces a decrease in  $[Ca^{2+}]_{ER}$  by



**Fig. 2.** Puromycin reduces the free  $Ca^{2+}$  concentration within the ER lumen. (A,B) Typical  $[Ca^{2+}]_{ER}$  traces from mag-fura-2 AM loaded LNCaP cells in response to 1  $\mu$ M ionomycin (IM) (A) and 200  $\mu$ M puromycin (B). The inset panels show individual fluorescence intensities at 340 nm ( $Ca^{2+}$ -insensitive) and 380 nm ( $Ca^{2+}$ -sensitive) excitation wavelengths. Note that application of ionomycin results in a drop in the mag-fura-2 ratio. (C) Cumulative data (mean  $\pm$  s.e.m.) for control and puromycin-treated LNCaP cells on the percentage of calcium release from internal stores.



**Fig. 3.** Anisomycin blocks the calcium leak from intracellular stores induced by puromycin. (A,B) The intracellular stores of LNCaP cells were loaded with the calcium indicator mag-fluo-4. Recordings of the leak from LNCaP cells, permeabilized with digitonin in two representative LNCaP cells in response to the application of puromycin are shown. Addition of puromycin induced a slow reduction in  $[Ca^{2+}]_{ER}$  (A) whereas anisomycin pre-treatment inhibits passive  $Ca^{2+}$  leakage through the ER in response to puromycin application (B). (C) Cumulative data (mean $\pm$ s.e.m.) for control and anisomycin-treated LNCaP cells of percentage of calcium released from internal stores.

maintaining the ribosome on the translocon, we used anisomycin. This second antibiotic inhibits the peptidyl transferase (Ioannou et al., 1998). Fig. 3A shows the ratio decrease ( $F/F_0$ ) of fluorescence after permeabilization of plasma membrane of mag-fluo-4 loaded LNCaP cells. The cytosolic dye was washed out after digitonin permeabilization. Puromycin at 200  $\mu$ M induced a 35.2% decrease in  $[Ca^{2+}]_{ER}$  after 260 seconds. Anisomycin at 200  $\mu$ M was also used (Fig. 3B). During the dye loading and throughout the experiment, the cells were in the presence of this antibiotic. Puromycin was ineffective in generating a significant decrease in ratio (Fig. 3B). In this experiment, the gentle decrease in fluorescence results from the dye photobleaching. Only 6.5% of the cells responded to puromycin (200  $\mu$ M) with a  $24.95\pm 3.51\%$  ( $n=46$ ) decrease in ratio (data not shown). The mean decrease in the ratio in the presence of both antibiotics was  $5.33\pm 2.34$  ( $n=46$ ). However, without anisomycin, puromycin induced a  $30.73\pm 2.69\%$  ( $n=50$ ) luminal calcium release in 78% of the cells (Fig. 3C).

#### The puromycin-induced luminal calcium leak occurs through the translocon and not through the IP<sub>3</sub> and ryanodine receptors activation

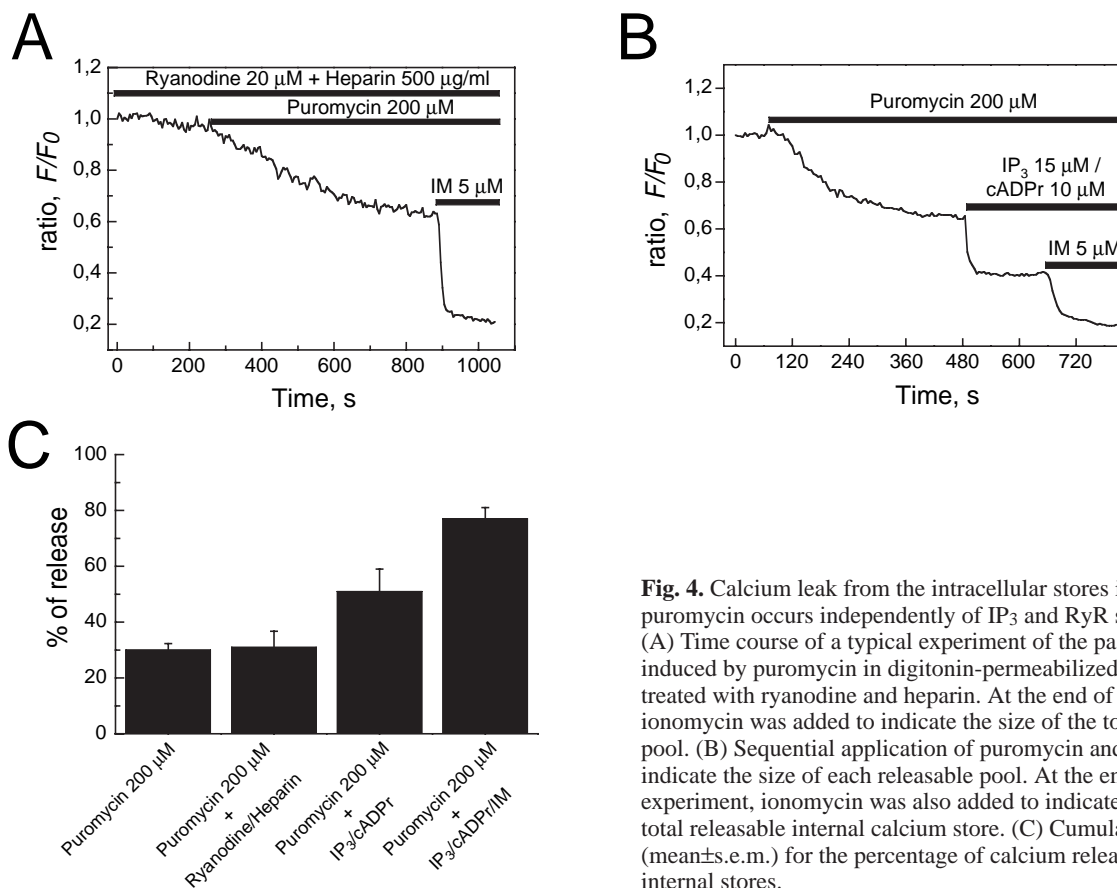
To exclude the hypothesis that the  $[Ca^{2+}]_{ER}$  decrease induced by puromycin was mediated by agonist-activated  $Ca^{2+}$  release channels, we first perfused the IP<sub>3</sub> receptor inhibitor (heparin 500  $\mu$ g/ml) and the ryanodine receptor inhibitor (ryanodine 20  $\mu$ M). Fig. 4A illustrates the effect of puromycin on the ratio ( $-35.72\%$ ) in the presence of the inhibitors. Puromycin

decreased the mean ratio of 13 permeabilized cells by  $31.21\pm 5.76\%$  in the presence of heparin and ryanodine (Fig. 4C). This value is significantly close to the puromycin effect without these inhibitors ( $-0.73\pm 2.69\%$ ;  $P<0.01$ , paired Student's *t*-test).

Secondly, we verified whether IP<sub>3</sub> (15  $\mu$ M) and cADPr (10  $\mu$ M) could have a cumulative effect after puromycin-induced calcium release. Puromycin evoked a 35% decrease in the ratio. Subsequent applications of IP<sub>3</sub> and cADPr induced a further 60% decrease (Fig. 4B). The mean decrease in the puromycin+IP<sub>3</sub>+ryanodine mixture was  $51.76\pm 8.17\%$  ( $n=8$ ). Ionomycin (5  $\mu$ M) generated an additional fall in the ratio:  $76.77\pm 4.08\%$  ( $n=8$ ). Furthermore, puromycin (200  $\mu$ M) did not inhibit NAADP (50 nM) induced calcium release (data not shown).

#### Colocalization between ribosome and translocon in confocal and electron microscopy

We first verified the effect of puromycin treatment on the subcellular distribution and colocalization of the 60S ribosomal subunit and the translocon. The 60S ribosomal subunit and the translocon protein, Sec61, were labeled in red and in green, respectively. We performed confocal microscopy under control conditions (Fig. 5A), after a 1-hour treatment with 200  $\mu$ M puromycin (Fig. 5B) or with 1.8 mM cycloheximide (Fig. 5C). The colocalization was displayed in orange in the optical slices. Sec 61 $\alpha$  and 60S ribosomal subunits were localized in the cytoplasm, both in the absence of puromycin and after puromycin treatment. The nucleus of



**Fig. 4.** Calcium leak from the intracellular stores induced by puromycin occurs independently of IP<sub>3</sub> and RyR stores. (A) Time course of a typical experiment of the passive Ca<sup>2+</sup> leak induced by puromycin in digitonin-permeabilized LNCaP cells treated with ryanodine and heparin. At the end of experiment, ionomycin was added to indicate the size of the total releasable pool. (B) Sequential application of puromycin and IP<sub>3</sub>/cADPr to indicate the size of each releasable pool. At the end of experiment, ionomycin was also added to indicate the size of the total releasable internal calcium store. (C) Cumulative data (mean  $\pm$  s.e.m.) for the percentage of calcium released from internal stores.

LNCaP cells was not included in this localization (Fig. 5A-C). We calculated a colocalization coefficient for each cell (Fig. 5D) according to the method developed by Manders and colleagues (Manders et al., 1993).

Puromycin induced a 23.6% decrease in the colocalization coefficient. In the same way, cycloheximide reduced the colocalization by 35.6%. We obtained similar results with electron microscopy. We used control cells (Fig. 5E) and cells treated with 200  $\mu$ M puromycin (Fig. 5F) or with 1.8 mM cycloheximide (Fig. 5G). In control conditions, the ribosomes are located on the ER membrane and inside the cytoplasm. In contrast, after a 1-hour treatment with puromycin or cycloheximide, most of the ribosomes were located inside the cytoplasm only. When treated with cycloheximide the ribosomes were aggregated into the cytoplasm in rosette-like polysomes.

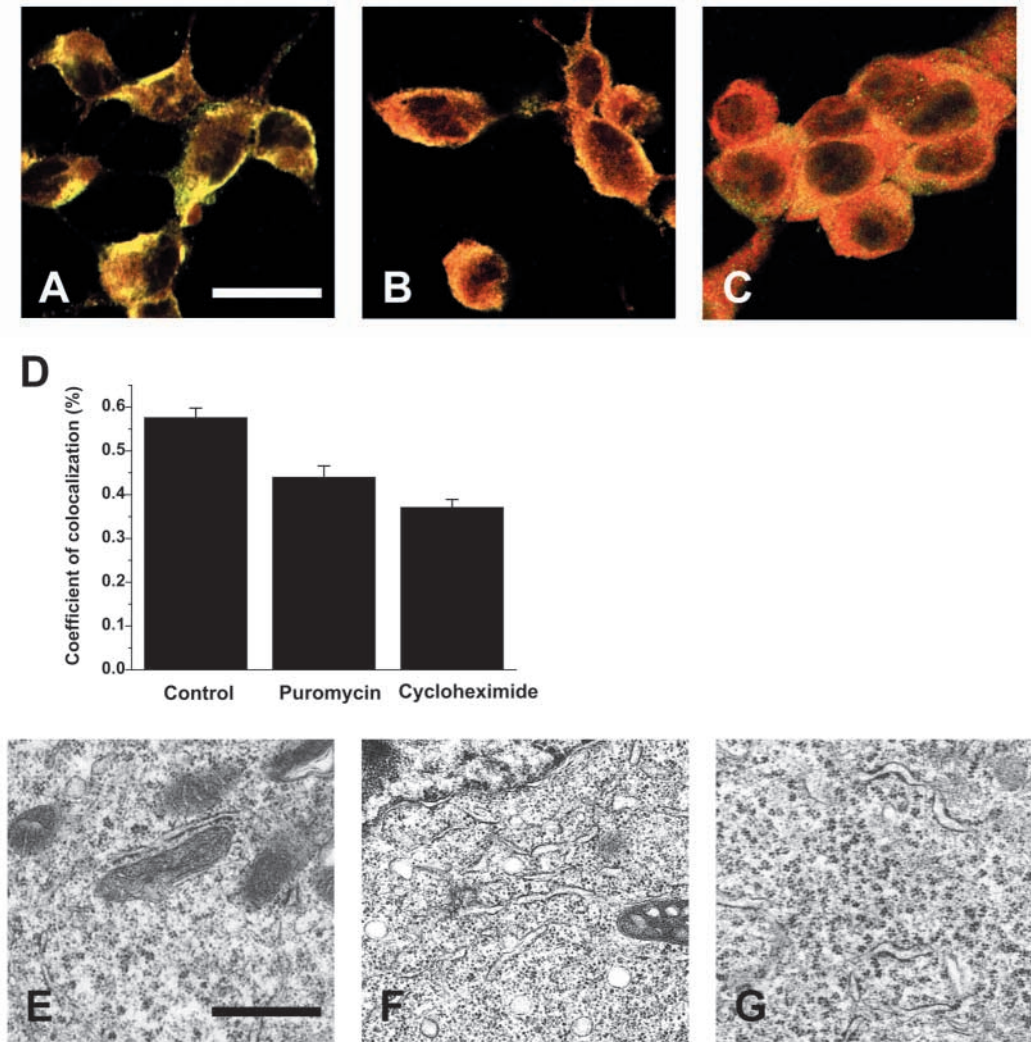
## Discussion

This work shows that the ubiquitous translocon complex in the endoplasmic reticulum membrane may act as a Ca<sup>2+</sup> leak channel. The complex is not as tight as previously thought. Heritage and Wonderlin demonstrated that permeability of small polar molecules increased in cells treated with puromycin (Heritage and Wonderlin, 2001). Recently, it has been shown that the permeability of the ER to small polar molecules is coupled to translation (Roy and Wonderlin, 2003). In an initial study, we measured the effect of puromycin on the Ca<sup>2+</sup> permeability of the ER membrane in mouse acinar

pancreatic cells (Lomax et al., 2002). In the present work, we demonstrate that puromycin acts on the translocon to induce a Ca<sup>2+</sup> leak in LNCaP cells and also that a physiological calcium leak through the translocon is possible at the end of termination when the ribosome is still in place. Puromycin is a potent translation inhibitor, specifically blocking the ribosome on the translocon and clearing the nascent peptide chain (Pestova et al., 2001). Under these conditions, the translocon channel is maintained in open configuration (Johnson and van Waes, 1999) and calcium can be released by the ER.

We measured the effects of long term (1-hour) exposure to puromycin on the ER calcium content. Puromycin treatment (200  $\mu$ M) of LNCaP cells loaded with fura-2 induced a significant decrease in the thapsigargin response, compared to control (-40%) and cycloheximide-treated cells (1.8 mM, 1 hour) (Fig. 1). This implies that Ca<sup>2+</sup> was released from the store through translocon pores left open by puromycin before thapsigargin application. The thapsigargin response of LNCaP cells was similar under control conditions and in the presence of cycloheximide, which inhibits elongation (Roy and Wonderlin, 2003). Thus, the effect of puromycin on the thapsigargin-induced calcium release was not due to inhibition of protein synthesis, but may be produced by the fact that the ribosome-bound translocon complex is maintained in open configuration.

To observe the on-line effect of puromycin on calcium leakage, we used mag-fura-2 or mag-fluo-4 to measure changes in luminal calcium content (Fig. 2). All the following experiments were carried out in the absence of Ca<sup>2+</sup>-ATPase



**Fig. 5.** Colocalization of the 60S ribosomal subunit with translocon protein Sec 61. (A-C) Sec 61, recognized by polyclonal Sec 61 antibodies, was detected using FITC-labeled secondary antibodies. 60S ribosomal subunit, recognized by polyclonal antibodies, was detected using Texas-Red-labeled secondary antibodies. No staining was seen in the absence of primary antibodies (data not shown). Cells were analyzed using a Zeiss LSM 510 confocal laser scanning system connected to a Zeiss Axiovert 200 M. Images were collected separately for each channel (Texas-Red at 563 nm and FITC at 488 nm excitation) and merged as indicated. The pictures were taken after a 1-hour treatment under control conditions (A), with 200  $\mu$ M puromycin (B) or with 1.8 mM cycloheximide (C). Bar, 20  $\mu$ m. (D) Correlation coefficients calculated according to reported methods (Manders et al., 1993). Puromycin slightly reduced colocalization of the Sec61 and ribosome labels. (E-G) Transmitted electron micrographs of LNCaP cells in control conditions (E), or after a 1-hour treatment with 200  $\mu$ M puromycin (F) or 1.8 mM cycloheximide (G). Bar, 200 nm.

inhibitors, in order to measure the result of luminal  $\text{Ca}^{2+}$  influx (we did not block the  $\text{Ca}^{2+}$ -ATPases) and efflux (due to passive leakage). It is known that ATP also modulates  $\text{Ca}^{2+}$  leakage (Hofer et al., 1996). Under our experimental conditions, the permeabilized LNCaP cells were perfused with an 'internal medium', with the same ATP concentration throughout the experiment (200  $\mu$ M).  $[\text{Ca}^{2+}]_{\text{ER}}$  was stable before puromycin or ionomycin perfusion. Cycloheximide did not induce a decrease in  $[\text{Ca}^{2+}]_{\text{ER}}$  (data not shown). As shown in Figs 2 and 3, puromycin triggered a calcium release from the ER. These results highlight the considerable impact of puromycin, as well as the fast kinetics of the translocon on the calcium leak. In physiological conditions, the pore diameter of the ribosome-free translocon is 0.9-1.5 nm (Hamman et al., 1998). During

translation, in ribosome-bound conditions, the pore aperture has a theoretical diameter of between 4 and 6 nm (Hamman et al., 1997). Recently ER permeability has been demonstrated to be coupled to protein synthesis (Roy and Wonderlin, 2003). Puromycin increased the 4-MalpaG (4-methylumbelliferyl- $\alpha$ -d-glucopyranoside) permeability, whereas cycloheximide did not. Furthermore, cycloheximide prevented the pactamycin-evoked 4-MalpaG permeability. They concluded that the permeation of 4-MalpaG is coupled to a gating mechanism, where the nascent protein chain locks the pore (Roy and Wonderlin, 2003). The results of our experiments are similar to these findings. Cycloheximide alone was unable to induce a  $\text{Ca}^{2+}$  release, unlike puromycin. The nascent protein needs to be released in order to let the  $\text{Ca}^{2+}$

leak through the pore of the translocon. Furthermore, an interesting study (Potter and Nicchitta, 2002) has demonstrated that the ribosome remains in place on the translocon after translation. In these physiological conditions,  $\text{Ca}^{2+}$  release through the translocon probably occurs at this moment and could be a way for the cell to regulate the  $[\text{Ca}^{2+}]_{\text{ER}}$ .

In our experiments, we generally applied 200  $\mu\text{M}$  puromycin. Others have used similar concentrations to estimate the puromycin effect on ER permeability (Roy and Wonderlin, 2003; Lomax et al., 2002). With 20  $\mu\text{M}$  puromycin, the  $[\text{Ca}^{2+}]_{\text{ER}}$  decrease was lower ( $18.51 \pm 5.32\%$ ,  $n=15$ ). Anisomycin (a peptidyl transferase inhibitor) inhibits the puromycin reaction (Ioannou et al., 1998). Anisomycin alone did not affect the ER calcium content (data not shown). In such conditions, when the peptidyl transferase is inhibited, the translocon is not permeable to calcium. Under the influence of anisomycin (200  $\mu\text{M}$ ), only 6.5% of the cells ( $n=46$ ) responded to puromycin with a decrease in their ER calcium content. This percentage of response is low when compared to the 78% ( $n=50$ ) puromycin response in cells untreated with anisomycin. Indeed, as anisomycin inhibits permeation by calcium via the translocon, the further action of puromycin (which releases the polypeptide chain and opens the translocon) could not be performed. This implies that puromycin specifically blocks the ribosome on the translocon, which is still open, thereby releasing calcium from the ER.

The calcium leak measured in the presence of puromycin does not involve NAADP,  $\text{IP}_3$  or ryanodine receptors. Puromycin induced the same calcium release with or without inhibitors of  $\text{IP}_3$  or ryanodine receptors (Fig. 4). Hence, these experiments demonstrate that the puromycin-induced calcium leak does not occur through  $\text{IP}_3$  receptors and/or ryanodine receptors. Furthermore, as shown in Fig. 4B, we applied 15  $\mu\text{M}$   $\text{IP}_3$  and 10  $\mu\text{M}$  cADPr after puromycin perfusion.  $\text{IP}_3$  and cADPr induced a further decrease in luminal calcium content after puromycin treatment. This cumulative effect emphasizes that the puromycin-induced calcium leak was not due to a non-specific action of puromycin on  $\text{IP}_3$  channels and/or ryanodine receptors. We did similar experiments with 50 nM NAADP and still observed a NAADP response after puromycin perfusion.

To explore the putative role of translocon in calcium leakage further, it would be interesting to investigate whether the translocon is calcium permeable in a lipid bilayer. However, the mammalian translocon complex contains numerous subunits (Sec61 $\alpha$ , Sec61 $\beta$ , Sec61 $\gamma$ , TRAM, Bip) and many associated proteins like SP, Calnexin or SRP (Johnson and van Waes, 1999). The stoichiometry of the translocon (especially the pore structure) is still unknown (Schnell and Hebert, 2003). The extraction of all the subunits of the translocon and their analysis in a lipid bilayer is not possible without impairing the structure of the native complex, thus altering its function. In addition, we planned to use siRNA or antisense to abolish the expression of at least one subunit of the translocon such as Sec 61 $\alpha$ . However, as the translocon is essential for translation, this type of experiment induced the death of treated cells. Furthermore, due to the high number of different subunits, it is not possible to overexpress the whole translocon complex. Therefore, at the present time our experimental approach is the only one permitting the clear measurement within a living cell, of the decrease in  $[\text{Ca}^{2+}]_{\text{ER}}$  that occurs through the translocon.

The luminal calcium concentration modulates many physiological processes, including gene expression and apoptosis (Jiang et al., 1994; Martikainen et al., 1991; McConkey, 1996; Putney and Ribeiro, 2000; Reynolds and Eastman, 1996; Wei et al., 1998). In LNCaP cells, calcium release from the ER has been shown to induce apoptosis (Skryma et al., 2000; Wertz and Dixit, 2000). Therefore, structures which are able to lower  $[\text{Ca}^{2+}]_{\text{ER}}$ , such as Bcl-2 (Vanden Abeele et al., 2002), are involved in the control of apoptosis. This is the case for the translocon. As mentioned before, recent findings indicate that the ribosome remains bound to the ER membrane following the termination of protein synthesis (Potter and Nicchitta, 2000; Potter and Nicchitta, 2002; Seiser and Nicchitta, 2000). At this time, the ribosome-bound translocons may be calcium-permeable, as they are after treatment with puromycin and are thus able to release part of the calcium from the ER, with all the consequences previously described. We noticed a decrease in the colocalization between the translocon and the ribosome after lengthy exposure to puromycin (Fig. 5). These results were confirmed by electron microscopy. Nevertheless, we still had low ER calcium content after a 1-hour treatment with this antibiotic, as shown by the thapsigargin response in Fig. 1. This implies that a small number of open translocon is sufficient to induce a sustained ER calcium release. Seiser and Nicchitta did not observe a decrease in the ribosome binding to the endoplasmic reticulum membrane after 15 minutes of cycloheximide treatment (Seiser and Nicchitta, 2000). In our work, we evaluated the long-term effect of cycloheximide (1 hour) on the localization of the ribosome on the endoplasmic reticulum. In our experimental conditions, we measured a significant decrease in the colocalization coefficient between the ribosome and the translocon. These findings are confirmed by electron microscopy. These differences with the published work (Seisser and Nicchitta, 2000) are probably caused by the incubation time with cycloheximide. Cycloheximide inhibits translation, inducing a premature termination, which leads to the dissociation of the ribosome from the translocon.

For the first time, we have demonstrated that the puromycin-induced calcium release occurs through the translocon. This calcium leak probably occurs through the translocon at the end of the termination, when the polypeptide chain is released and during the time when the ribosome is still on the translocon. As this calcium leak is present in yeast and mammalian cells (Deshaies and Schekman, 1987; Gorlich and Rapoport, 1993; Stirling et al., 1992), our findings suggest that calcium release through the translocon is a common phenomenon in cell physiology.

We are grateful to Alexei Tepikin (University of Liverpool, UK) and to Helen Selliez-Vandernotte for reading the manuscript and for valuable discussions. This work was supported by grants from INSERM, the Ministère de l'Éducation Nationale, the Association pour la Recherche contre le Cancer and the Ligue Nationale contre le Cancer.

## References

- Beckmann, R., Bubeck, D., Grassucci, R., Penczek, P., Verschoor, A., Blobel, G. and Frank, J. (1997). Alignment of conduits for the nascent polypeptide chain in the ribosome-Sec61 complex. *Science* **278**, 2123-2126.
- Berridge, M. J. and Irvine, R. F. (1989). Inositol phosphates and cell signalling. *Nature* **341**, 197-205.



- Bezprozvanny, I., Watras, J. and Ehrlich, B. E.** (1991). Bell-shaped calcium-response curves of Ins(1,4,5)P<sub>3</sub>- and calcium-gated channels from endoplasmic reticulum of cerebellum. *Nature* **351**, 751-754.
- Cancela, J. M., Van Coppenolle, F., Galione, A., Tepikin, A. V. and Petersen, O. H.** (2002). Transformation of local Ca<sup>2+</sup> spikes to global Ca<sup>2+</sup> transients: the combinatorial roles of multiple Ca<sup>2+</sup> releasing messengers. *EMBO J.* **21**, 909-919.
- Clapham, D. E.** (1995). Calcium signaling. *Cell* **80**, 259-268.
- Deshaies, R. J. and Schekman, R.** (1987). A yeast mutant defective at an early stage in import of secretory protein precursors into the endoplasmic reticulum. *J. Cell Biol.* **105**, 633-645.
- Gorlich, D. and Rapoport, T. A.** (1993). Protein translocation into proteoliposomes reconstituted from purified components of the endoplasmic reticulum membrane. *Cell* **75**, 615-630.
- Gorlich, D., Hartmann, E., Prehn, S. and Rapoport, T. A.** (1992a). A protein of the endoplasmic reticulum involved early in polypeptide translocation. *Nature* **357**, 47-52.
- Gorlich, D., Prehn, S., Hartmann, E., Kalies, K. U. and Rapoport, T. A.** (1992b). A mammalian homolog of SEC61p and SECYp is associated with ribosomes and nascent polypeptides during translocation. *Cell* **71**, 489-503.
- Hamman, B. D., Chen, J. C., Johnson, E. E. and Johnson, A. E.** (1997). The aqueous pore through the translocon has a diameter of 40-60 Å during cotranslational protein translocation at the ER membrane. *Cell* **89**, 535-544.
- Hamman, B. D., Hendershot, L. M. and Johnson, A. E.** (1998). BiP maintains the permeability barrier of the ER membrane by sealing the luminal end of the translocon pore before and early in translocation. *Cell* **92**, 747-758.
- Heritage, D. and Wonderlin, W. F.** (2001). Translocon pores in the endoplasmic reticulum are permeable to a neutral, polar molecule. *J. Biol. Chem.* **276**, 22655-22662.
- Hofer, A. M., Curci, S., Machen, T. E. and Schulz, I.** (1996). ATP regulates calcium leak from agonist-sensitive internal calcium stores. *FASEB J.* **10**, 302-308.
- Horne, Z. and Hesketh, J.** (1990). Immunological localization of ribosomes in striated rat muscle. Evidence for myofibrillar association and ontological changes in the subsarcolemmal:myofibrillar distribution. *Biochem. J.* **268**, 231-236.
- Ioannou, M., Coutsogeorgopoulos, C. and Synetos, D.** (1998). Kinetics of inhibition of rabbit reticulocyte peptidyltransferase by anisomycin and sparsomycin. *Mol. Pharmacol.* **53**, 1089-1096.
- Jiang, S., Chow, S. C., Nicotera, P. and Orrenius, S.** (1994). Intracellular Ca<sup>2+</sup> signals activate apoptosis in thymocytes: studies using the Ca(2+)-ATPase inhibitor thapsigargin. *Exp. Cell Res.* **212**, 84-92.
- Johnson, A. E. and van Waes, M. A.** (1999). The translocon: a dynamic gateway at the ER membrane. *Annu. Rev. Cell Dev. Biol.* **15**, 799-842.
- Lomax, R. B., Camello, C., Van Coppenolle, F., Petersen, O. H. and Tepikin, A. V.** (2002). Basal and physiological Ca<sup>2+</sup> leak from the endoplasmic reticulum of pancreatic acinar cells. Second messenger-activated channels and translocons. *J. Biol. Chem.* **277**, 26479-26485.
- Manders, E. M. M., Verbeek, F. J. and Alen, J. A.** (1993). Measurement of co-localization of objects in dual-color confocal images. *J. Microsc.* **169**, 375-382.
- Martikainen, P., Kyprianou, N., Tucker, R. W. and Isaacs, J. T.** (1991). Programmed death of nonproliferating androgen-independent prostatic cancer cells. *Cancer Res.* **51**, 4693-4700.
- McConkey, D. J.** (1996). The role of calcium in the regulation of apoptosis. *Scanning Microsc.* **10**, 777-793.
- Mogami, H., Tepikin, A. V. and Petersen, O. H.** (1998). Termination of cytosolic Ca<sup>2+</sup> signals: Ca<sup>2+</sup> reuptake into intracellular stores is regulated by the free Ca<sup>2+</sup> concentration in the store lumen. *EMBO J.* **17**, 435-442.
- Park, M. K., Petersen, O. H. and Tepikin, A. V.** (2000). The endoplasmic reticulum as one continuous Ca(2+) pool: visualization of rapid Ca(2+) movements and equilibration. *EMBO J.* **19**, 5729-5739.
- Pestka, S.** (1974). The use of inhibitors in studies on protein synthesis. *Methods Enzymol.* **30**, 261-282.
- Pestova, T. V., Kolupaeva, V. G., Lomakin, I. B., Pilipenko, E. V., Shatsky, I. N., Agol, V. I. and Hellen, C. U.** (2001). Molecular mechanisms of translation initiation in eukaryotes. *Proc. Natl. Acad. Sci. USA* **98**, 7029-7036.
- Potter, M. D. and Nicchitta, C. V.** (2000). Regulation of ribosome detachment from the mammalian endoplasmic reticulum membrane. *J. Biol. Chem.* **275**, 33828-33835.
- Potter, M. D. and Nicchitta, C. V.** (2002). Endoplasmic reticulum-bound ribosomes reside in stable association with the translocon following termination of protein synthesis. *J. Biol. Chem.* **277**, 23314-23320.
- Pozzan, T., Rizzuto, R., Volpe, P. and Meldolesi, J.** (1994). Molecular and cellular physiology of intracellular calcium stores. *Physiol. Rev.* **74**, 595-636.
- Putney, J. W., Jr and Ribeiro, C. M.** (2000). Signaling pathways between the plasma membrane and endoplasmic reticulum calcium stores. *Cell. Mol. Life Sci.* **57**, 1272-1286.
- Reynolds, J. E. and Eastman, A.** (1996). Intracellular calcium stores are not required for Bcl-2-mediated protection from apoptosis. *J. Biol. Chem.* **271**, 27739-27743.
- Roy, A. and Wonderlin, W. F.** (2003). The permeability of the endoplasmic reticulum is dynamically coupled to protein synthesis. *J. Biol. Chem.* **278**, 4397-4403.
- Schnell, D. J. and Hebert, D. N.** (2003). Protein translocons. Multifunctional mediators of protein translocation across membranes. *Cell* **112**, 491-505.
- Seiser, R. M. and Nicchitta, C. V.** (2000). The fate of membrane-bound ribosomes following the termination of protein synthesis. *J. Biol. Chem.* **275**, 33820-33827.
- Simon, S. M. and Blobel, G.** (1991). A protein-conducting channel in the endoplasmic reticulum. *Cell* **65**, 371-380.
- Skryma, R., Mariot, P., Bourhis, X. L., Van Coppenolle, F., Shuba, Y., Vanden Abeele, F., Legrand, G., Humez, S., Boilly, B. and Prevarskaya, N.** (2000). Store depletion and store-operated Ca<sup>2+</sup> current in human prostate cancer LNCaP cells: involvement in apoptosis. *J. Physiol.* **527**, 71-83.
- Stirling, C. J., Rothblatt, J., Hosobuchi, M., Deshaies, R. and Schekman, R.** (1992). Protein translocation mutants defective in the insertion of integral membrane proteins into the endoplasmic reticulum. *Mol. Biol. Cell* **3**, 129-142.
- Vanden Abeele, F., Skryma, R., Shuba, Y., Van Coppenolle, F., Slomianny, C., Roudbaraki, M., Mauroy, B., Wuytack, F. and Prevarskaya, N.** (2002). Bcl-2-dependent modulation of Ca(2+) homeostasis and store-operated channels in prostate cancer cells. *Cancer Cell* **1**, 169-179.
- Wei, H., Wei, W., Bredeisen, D. E. and Perry, D. C.** (1998). Bcl-2 protects against apoptosis in neuronal cell line caused by thapsigargin-induced depletion of intracellular calcium stores. *J. Neurochem.* **70**, 2305-2314.
- Wertz, I. E. and Dixit, V. M.** (2000). Characterization of calcium release-activated apoptosis of LNCaP prostate cancer cells. *J. Biol. Chem.* **275**, 11470-11477.