



Initial FDG-PET/CT predicts survival in adults Ewing sarcoma family of tumors

Bastien Jamet, Thomas Carlier, Loïc Campion, Emmanuelle Bompas, Sylvie Girault, Fanny Borrelly, Ludovic Ferrer, Maxime Rousseau, Yann Venel, Françoise Kraeber-Bodéré, et al.

► To cite this version:

Bastien Jamet, Thomas Carlier, Loïc Campion, Emmanuelle Bompas, Sylvie Girault, et al.. Initial FDG-PET/CT predicts survival in adults Ewing sarcoma family of tumors. *Oncotarget*, 2017, 8 (44), pp.77050-77060. inserm-01636020

HAL Id: inserm-01636020

<https://inserm.hal.science/inserm-01636020>

Submitted on 16 Nov 2017

HAL is a multi-disciplinary open access archive for the deposit and dissemination of scientific research documents, whether they are published or not. The documents may come from teaching and research institutions in France or abroad, or from public or private research centers.

L'archive ouverte pluridisciplinaire **HAL**, est destinée au dépôt et à la diffusion de documents scientifiques de niveau recherche, publiés ou non, émanant des établissements d'enseignement et de recherche français ou étrangers, des laboratoires publics ou privés.

Initial FDG-PET/CT predicts survival in adults Ewing sarcoma family of tumors

Bastien Jamet¹, Thomas Carlier^{2,3}, Loic Campion^{2,4}, Emmanuelle Bompas⁴, Sylvie Girault⁵, Fanny Borrelly⁶, Ludovic Ferrer⁷, Maxime Rousseau¹, Yann Venel⁶, Françoise Kraeber-Bodéré^{1,2,3} and Caroline Rousseau^{1,2}

¹Nuclear Medicine Unit, ICO Cancer Center Gauducheau, Saint Herblain, France

²Nantes-Angers Cancer Research Center, INSERM U892, CNRS UMR 6299, University of Nantes, Nantes, France

³Nuclear Medicine Unit, University Hospital, Nantes, France

⁴Oncology Unit, ICO Cancer Center Gauducheau, Saint Herblain, France

⁵Nuclear Medicine Unit, ICO Cancer Center Papin, Angers, France

⁶Nuclear Medicine Unit, University Hospital Bretonneau, Tours, France

⁷Physics Unit, ICO Cancer Center Gauducheau, Saint Herblain, France

Correspondence to: Bastien Jamet, **email:** bastien.jamet@chu-nantes.fr

Keywords: FDG-PET/CT, oncology, Ewing sarcoma family of tumors, survival analysis, prognosis

Received: May 11, 2017

Accepted: June 27, 2017

Published: August 18, 2017

Copyright: Jamet et al. This is an open-access article distributed under the terms of the Creative Commons Attribution License 3.0 (CC BY 3.0), which permits unrestricted use, distribution, and reproduction in any medium, provided the original author and source are credited.

ABSTRACT

Purpose: The aim of this retrospective study was to determine, at baseline, the prognostic value of different FDG-PET/CT quantitative parameters in a homogenous Ewing Sarcoma Family of Tumors (ESFT) adult population, compared with clinically relevant prognostic factors.

Methods: Adult patients from 3 oncological centers, all with proved ESFT, were retrospectively included. Quantitative FDG-PET/CT parameters (SUV (maximum, peak and mean), metabolic tumor volume (MTV) and total lesion glycolysis (TLG) of the primary lesion of each patient were recorded before treatment, as well as usual clinical prognostic factors (stage of disease, location, tumor size, gender and age). Then, their relation with progression free survival (PFS) and overall survival (OS) was evaluated.

Results: 32 patients were included. Median age was 21 years (range, 15 to 61). Nineteen patients (59%) were initially metastatic. On multivariate analysis, high SUV_{max} remained independent predictor of worst OS ($p=0.02$) and PFS ($p=0.019$), metastatic disease of worst PFS ($p=0.01$) and high SUV_{peak} of worst OS ($p=0.01$). Optimal prognostic cut-off of SUV_{peak} was found at 12.5 in multivariate analyses for PFS and OS ($p=0.0001$).

Conclusions: FDG-PET/CT, recommended at ESFT diagnosis for initial staging, can be a useful tool for predicting long-term adult patients outcome through semi-quantitative parameters.

INTRODUCTION

The term Ewing sarcoma family of tumours (ESFT) indicates a family of morphologically similar malignancies that includes classic Ewing sarcoma of bone, extraskeletal Ewing sarcoma, small cell tumour

of the thoraco-pulmonary region (Askin tumour), and soft tissue-based primitive neuroectodermal tumours (PNET) [1]. It is an aggressive sarcoma of bone and/or soft tissue with a peak incidence during adolescence and young adulthood [2] and the second most common primary bone tumour [3].

Clinically relevant prognostic factors (age, tumor size, location, male gender and metastatic disease) were identified by international studies conducted over the last three decades and confirmed in a large and recent epidemiologic study [4]. With advances of multimodal therapy (chemotherapy and surgery with or without radiotherapy), survival has improved for patients with localized disease [4, 5] but those with a metastatic disease still have a poor prognosis with a five-year overall survival (OS) of 30% [6, 7]. However, patients with isolated pulmonary metastasis have a better clinical outcome than those with metastases at other sites [6, 8]. For localized tumors resected after induction chemotherapy, histologic response is the strongest independent prognostic factor, regardless of the grading system used [9, 10].

Before using ^{18}F -fluorodeoxyglucose positron emission tomography with computed tomography (FDG-PET/CT) for ESFT staging, imaging for this pathology management included only MRI (local extent tumor evaluation) and CT associated with bone scan for metastatic status. As with other malignancies, then the role of FDG-PET/CT is now well established for the staging of primary and recurrent ESFT [11–14]. In a meta-analysis, Treglia *et al.* [11] showed at staging a pooled sensitivity of 96% and a pooled specificity of 92%. FDG-PET/CT can detect practically 100% of the primary tumors (as other conventional imaging methods) but is superior in the detection of bone metastases (sensitivity of 88% versus 37% for bone scan) [14]. Conversely, FDG-PET/CT seems to be less sensitive than CT for the depiction of small lesions, mainly represented by pulmonary metastases due to lowest spatial resolution and spontaneous breathing during the exam [15, 16]. Therefore, the combination of FDG-PET/CT with morphological imaging is a valuable tool for the staging and restaging of ESFT and has a relevant impact on the treatment strategy plan [17]. Moreover, recent studies (with mixed paediatric and adult populations) showed that FDG-PET/CT seemed to have a prognostic value for PFS after neoadjuvant chemotherapy [18–20] and FDG-PET/CT changes in metabolic activity of the primary tumor seemed to be correlated with histopathological response [21]. In addition, at diagnosis, Raciborska *et al.* [19] also showed in a series of 50 paediatric patients that FDG-PET/CT SUV_{max} was significantly lower for patients with good histological response than for patients with poor histological response.

Nevertheless, few data on the prognostic value of FDG-PET/CT at baseline has been released. Only a recent retrospective study with a mixed children and adults cohort [22], showed that $\text{SUV}_{\text{max}} > 5.8$ was an independent factor associated with worse overall survival.

The aim of this retrospective study was to determine, at baseline, the prognostic value of different FDG-PET/CT quantitative parameters in a homogenous ESFT adult population compared with clinically relevant prognostic factors.

RESULTS

Patient characteristics

Clinical characteristics of the 32 patients are listed in Table 1. All patients had histological confirmed ESFT at the time of diagnosis. Most of patients (19/32: 59%) had metastatic disease at diagnosis: 8/32 (25%) in lungs, 8/32 (25%) in bone and 3/32 (9%) in both locations. During follow-up, eighteen of the 32 patients (56%) have experienced metastatic disease recurrence; eight of them (25%) died specifically from their disease.

Response to the neoadjuvant chemotherapy, assessed by pathological analysis, was performed for 18/32 (56%) patients. Median follow-up was 32 months (range, 2 to 64) and median time to relapse (or progression) was 18 months (range, 9 to 56).

Univariate analyses

The 3-years PFS and OS survival of the population were estimated to 35% and 63%, respectively. Results of univariate survival analyses are presented in Table 2. Male gender and metastatic disease were associated with a significant worse PFS but neither of them adversely affected OS. In particular, metastatic disease had a trend toward reduced OS but no statistical significance (metastatic patients had 3-years OS of 43% vs. 84% for non-metastatic patients, $p = 0.149$). There was not significant association between outcome and other clinical parameters as age, location, tumor size.

For FDG-PET/CT-derived quantitative parameters, the degree of FDG uptake at baseline was an unfavorable prognostic factor. Indeed, high SUV_{max} , SUV_{peak} , and $\text{SUV}_{\text{mean40\%}}$ significantly adversely affected PFS and OS. An additional parameter influenced only OS: high $\text{SUV}_{\text{mean2.5}}$ value which shortened survival. Discretization of SUV_{max} showed that 3-years PFS and OS survival of patients with baseline $\text{SUV}_{\text{max}} \geq 17$ were decreased compared to patient with lower SUV_{max} (OS: 21% vs 72%, respectively; $p=0.004$; PFS: 0% vs 41%, respectively; $p=0.001$). Similarly, discretization of SUV_{peak} showed that 3-years PFS and OS survival of patients with baseline $\text{SUV}_{\text{peak}} \geq 12.5$ were significantly decreased compared to patients with lower SUV_{peak} (OS: 0% vs 72%, respectively; $p<10^{-3}$; PFS: 0% vs 36%, respectively; $p=0.002$).

There was not statistically significant association between outcome (PFS or OS) and primary lesion functional volumes (MTV or TLG) even if various thresholds were tested.

Multivariate analyses

Results of multivariate survival analyses are presented in Table 3 for PFS and Table 4 for OS. In

Table 1: Patient characteristics

Variable	N	%
Patients	32	
Median age (range)	21 (15 to 61)	
Type of primary lesion		
Bone	21	66
Extra-skeletal	11	34
Gender		
Male	18	56
Female	14	44
Primary tumor location		
Axial	18	56
Peripheral	14	44
Size		
>10 cm	16	50
<10 cm	16	50
Stage of disease		
Metastatic	19	59
Localized	13	41
Metastatic sites		
Lungs	8	25
Bones	8	25
Lungs and bones	3	9

ES: Ewing Sarcoma.

summary, high SUV_{max} value was an independent and unfavorable factor for PFS and OS ($p=0.019$) and ($p=0.02$) respectively. Moreover, high SUV_{peak} value was an independent and unfavorable factor for OS ($p=0.01$) but only had a limited prognostic value for PFS ($p=0.057$). PFS was also negatively and independently influenced by metastatic status at baseline, which is not observed at the analysis for OS. Optimal prognostic cut-off (CO) for SUV_{peak} was determined as 12.5 for PFS and OS ($p=0.0001$). Kaplan–Meier curves of OS according to FDG-PET/CT- $SUV_{peak \geq 12.5}$ measurement at baseline and disease stage are depicted in Figure 1. Metastatic patients with $SUV_{peak} \geq 12.5$ had at 18-months an estimate of OS of 50% vs. 82% if $SUV_{peak} < 12.5$ ($p=0.001$), as illustrated with Figure 2. In the non-metastatic sub-group of patients, all patients with $SUV_{peak} \geq 12.5$ died during the first fifteen months of follow-up, while none of those with $SUV_{peak} < 12.5$ ($p=0.009$) died.

Kaplan–Meier curves of PFS according to FDG-PET/CT- SUV_{peak} measurement at baseline and disease

stage are depicted in Figure 3. All metastatic patients with $SUV_{peak} \geq 12.5$ relapsed or progressed during the first 12 months of follow-up. Conversely, patients with $SUV_{peak} < 12.5$ had a 1-year PFS survival of 86% ($p=0.002$). In the non-metastatic sub-group of patients, all patients with $SUV_{peak} \geq 12.5$ relapsed or progressed during the first 12 months of follow-up, while those with $SUV_{peak} < 12.5$ had 2-years PFS survival of 80% ($p=0.002$).

None optimal prognostic cut off of SUV_{max} was found in multivariate analysis for the PFS and OS in this cohort.

DISCUSSION

Recently, Hwang *et al.* [22] has showed, for the first time, the prognostic value of FDG-PET/CT at diagnosis in ESFT patients, but in a mixed population (children and adults), as for all studies about this disease [11, 18, 19, 22].

Table 2: Univariate analysis of baseline variables adversely affecting PFS and OS (A: 3yr-PFS/OS and p-values; B: HRs and 95% CIs)

A

Variables	N	3-yr PFS(%) [95%CI]	p	3-yr OS(%) [95%CI]	p
Gender					
Female	14	62 [26-84]	0.01	85 [52-96]	0.19
Male	18	14 [2-35]		47 [20-71]	
Stage of disease					
Localized	13	73 [37-90]	0.0004	84 [49-96]	0.15
Metastatic	19	7 [1-28]		43 [15-69]	
SUV _{max}					
<17	26	41 [20-60]	0.001	72 [44-87]	0.004
≥17	6	0 [0-0]		21 [1-60]	
SUV _{peak}					
<12.5	26	36 [17-56]	0.002	72 [44-87]	<0.001
≥12.5	6	0 [0-0]		0 [0-0]	
SUV _{mean40%}					
<8.5	25	44 [23-63]	0.017	71 [43-87]	0.018
≥8.5	7	0 [0-0]		34 [5-69]	

SUV: Standardized Uptake Value; PFS: Progression Free Survival; OS: Overall Survival; HR: Hazard Ratio; CI: Confidence Interval.

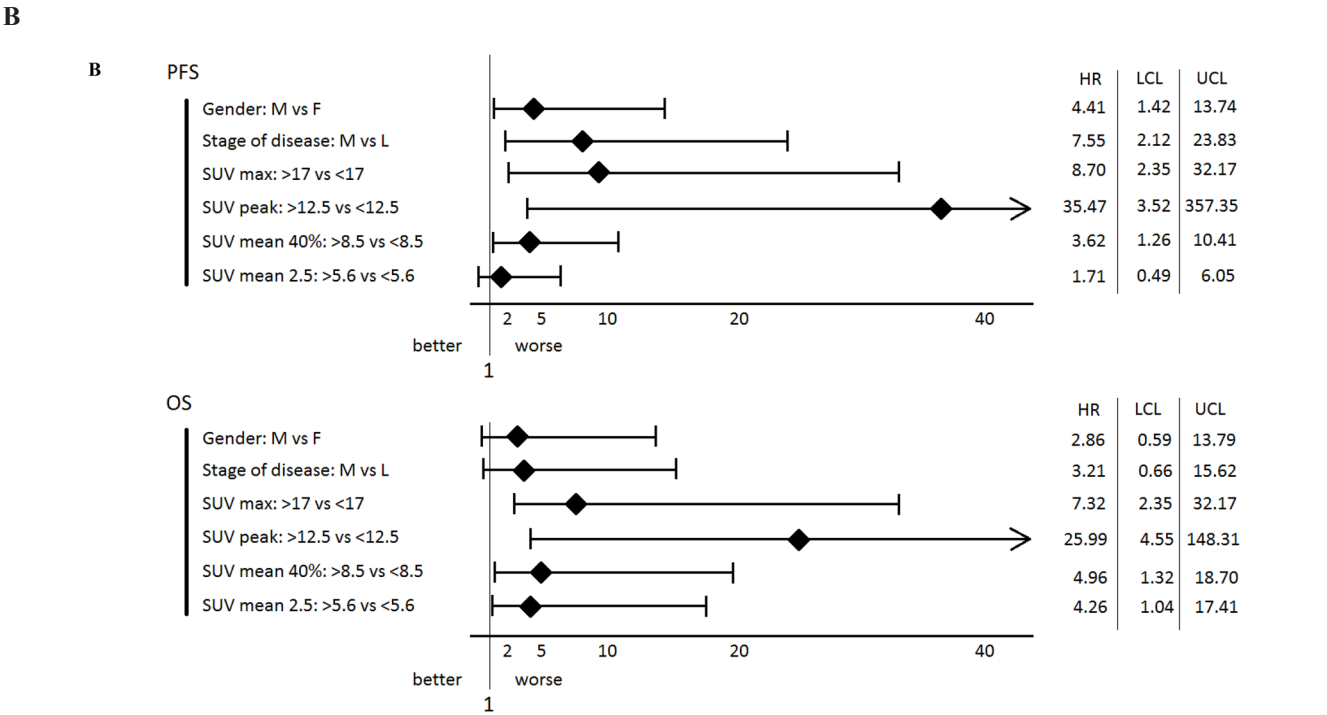


Table 3: Multivariate Cox regression models for the progression free survival analysis

Models	Multivariate analysis	
	Hazard Ratio (95% CI)	<i>p</i>
Model 1		
SUV _{max}	1.12 (1.02-1.24)	0.019
Metastatic disease	5.83 (1.52-22.46)	0.01
Male gender	2.8 (0.82-9.59)	0.1
Model 2		
SUV _{peak}	1.17 (0.99-1.38)	0.057
Metastatic disease	6.08 (1.56-23.67)	0.009
Male gender	3.19 (0.91-10.98)	0.07

CI: Confidence Interval; SUV: Standardized Uptake Value.

Table 4: Multivariate Cox regression models for the overall survival analysis

Models	Multivariate analysis	
	Hazard Ratio (95% CI)	<i>p</i>
Model 1		
SUV _{max}	1.17 (1.02-1.34)	0.02
Metastatic disease	1.62 (0.29-9.01)	0.58
Male gender	2.23 (0.39-12.59)	0.36
Model 2		
SUV _{peak}	1.31 (1.05-1.65)	0.01
Metastatic disease	1.75 (0.32-9.47)	0.51
Male gender	2.18 (0.38-12.29)	0.37

CI: Confidence Interval; SUV: Standardized Uptake Value.

To our knowledge, our study is the first to explore prognostic value of FDG-PET/CT at diagnosis for exclusively ESFT adult patients.

One major result can be highlighted: in a homogeneous adult cohort, treated according to the same treatment protocol, FDG-PET/CT's semi-quantitative parameters as SUV values were strong predictors of clinical outcomes as early as at diagnosis. This is the key point of our study and highlights a new role of the FDG-PET/CT in the management of adult ESFT patients.

A meta-analysis about 2 studies (patients with soft tissue sarcomas) suggested that FDG-PET/CT at diagnosis provides a very useful prognostic OS tool for patients through the SUV [27]. But these studies assessed mixed cohorts (age and histological results differed), allowing only a careful interpretation of the FDG-PET/CT semi-quantification. Hwang study demonstrated that patient age and metastatic status were found to be independent predictors of overall survival, [4, 10, 22, 28, 29]. Whether the age of the patient is an independent prognostic factor should focus our attention on the question of the relevance of mixing adult

and pediatric patients in cohorts for this type of pathology. The disease appeared less unfavorable if patient age was <20 years, raising the possibility of a different disease according to the patients age. In our study, with adults exclusively, patient age was not found as a prognostic factor (certainly due to the population homogeneity). In contrast, metastatic status remained as an independent prognostic factor for the PFS ($p=0.01$). This is probably due to the high prevalence of metastatic patients (nearly 60%), to the low incidence of death during follow-up (9/32) and the limited number of patients. Nevertheless, this clinical parameter is well known as the strongest adverse prognostic factor [6, 8].

The second interesting point in Hwang study was the SUV_{max} cut off of 5.8 as an independent prognostic factor for OS [22], contrary to Hawkins et al. [18] study findings. However, populations for these two studies concerned a mixed (adult and pediatric) recruitment. For our part, in exclusively adult population, in multivariate analysis, high SUV_{max} value was an independent and unfavorable factor for OS ($p=0.02$) but no discriminating cut off was found.

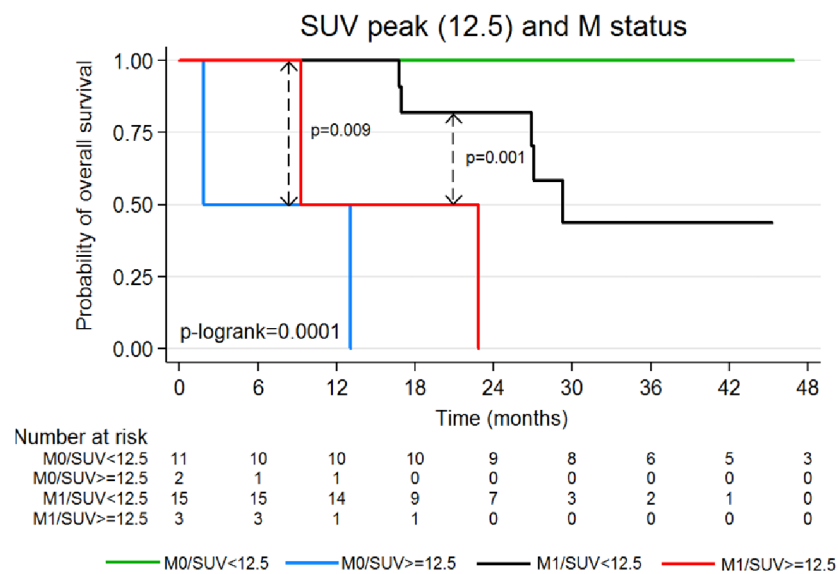
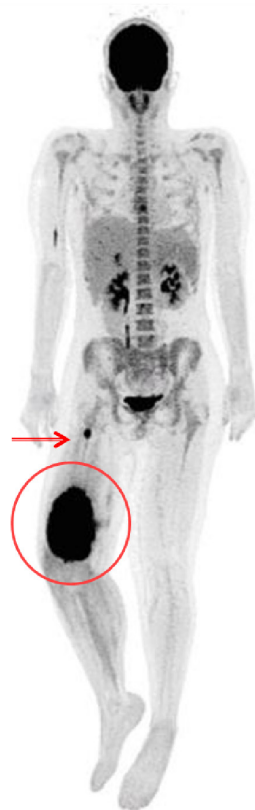


Figure 1: OS according to SUV_{peak} and metastatic status (N=31) (Too small tumor for one patient to quantify with SUV_{peak}).

(A)



(B)

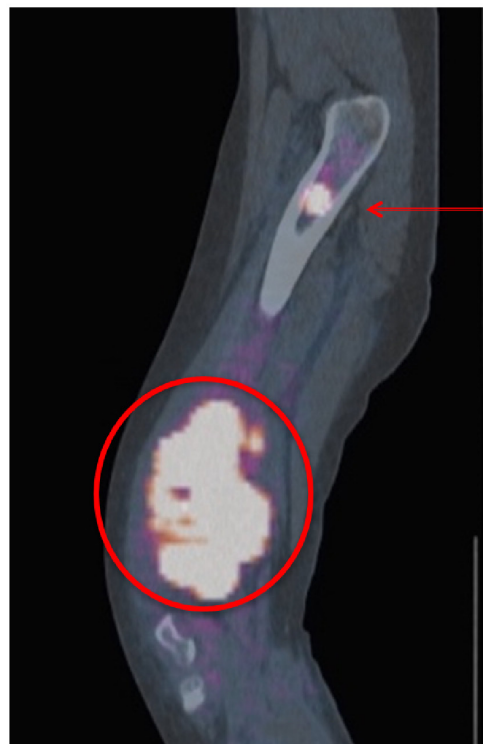


Figure 2: (A) Maximum image projection (MIP) showed the primary tumor surrounded associated with bone metastatic site (arrow). (B) Sagittal fusion FDG-PET/CT image specified lesions' anatomical locations. Semi-quantitative PET parameters of the primary tumor (SUV_{max} of 29 and SUV_{peak} of 20.57) were associated with a poor prognosis (OS: 9 months).

Our multi-parameters study (SUV_{max} , SUV_{peak} , $SUV_{mean2.5}$, $SUV_{mean40\%}$, $MTV_{2.5}$, $MTV_{40\%}$, $TLG_{2.5}$, $TLG_{40\%}$), found two unfavorable independent prognostic parameters for the OS and PFS: the SUV_{max} without individualized cut-off and the SUV_{peak} with an optimal cut-off determined at 12.5. The SUV_{max} , mainly used in clinical practice, has the disadvantage of being affected by the image noise [30]. In our study, primary ESFT are usually large and very avid to FDG giving a high tumor/background noise ratio allowing clinicians to overcome this limitation. The use of SUV_{peak} was recommended as a more robust alternative due to its fixed volume of 12 mm diameter, less subject to noise than SUV_{max} [31]. The reproducibility of SUV_{peak} is less affected by acquisition equipment or pixel size changes as could be occurred in multicentric studies. This property could have advantages for multicenter studies, in which images from different sites are likely to have pixels of different sizes. This parameter is the most significant of our study with the ability to determine an optimal cut-off for both the OS and PFS. The SUV_{mean} parameter, whatever the segmentation approach used, was not an independent prognostic factor in our study and we can assume that the method of calculating the SUV_{mean} , by averaging data from several pixels, is responsible of a loss of information, especially regarding the most intense pixels which most likely correspond to the most aggressive cell clusters.

The potential clinical impact of using parameters as MTV or TLG, reflecting overall tumor metabolic information rather than a single or few voxel measures based on SUV_{max} or SUV_{peak} has been recently demonstrated [32]. MTV and TLG seem to be useful for

the FDG-PET/CT's therapeutic response evaluation of various tumors [33, 34] and high MTV or TLG has an unfavorable prognostic value at baseline in many solid tumors like breast [35], lung [36] or esophageal cancers [37]. In ESFT patients, one study concerning neoadjuvant chemotherapy assessment showed that a significant decrease of MTV during treatment was associated with favorable histologic response [21]. We were interested on relation with survival of MTV's and TLG's primary tumor at baseline for the first time at our knowledge, but these parameters were not prognostic factors in our study. The TLG is unlikely because of its definition corresponding to the combination of two parameters (SUV_{mean} and MTV) not prognostic in our study. For MTV, one can hypothesize that the prognosis is possibly less impacted by MTV than the detection of the most intense pixels (SUV_{max} , SUV_{peak}), that correspond to the most aggressive cell clusters with prognostic consequence.

The limitation of our study is its retrospective design associated with the small number of patients. However, the fact the strongest prognostic factor was SUV_{peak} instead of SUV_{max} makes the general applicability of our study more transferable to other centers. The multi-centric design of semi-quantitative data analysis could be a problem for the robustness of the results of this study. But the most important semi-quantitative parameters that are significant in this study are the SUV_{peak} and SUV_{max} slightly impacted by the partial volume effect. As suggested by Visvikis et al. SUV_{max} is in principle less dependent to partial volume effects (PVE), resulting from the limited spatial resolution of PET imaging. SUV_{peak} can reduce the SUV_{max} sensitivity to noise and this decreases the variance

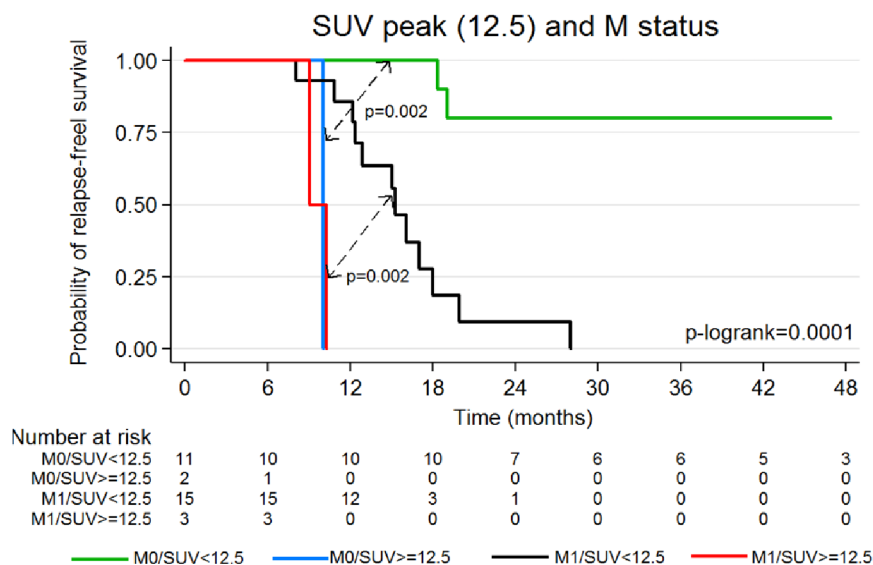


Figure 3: PFS according to SUV_{peak} and metastatic status (N=31) (Too small tumor for one patient to quantify with SUV_{peak}).

of the PET/CT results [32, 38]. Kelly et al. showed that despite the use of different reconstruction algorithms, the SUV_{peak} remains within the limits of the max and min recovery coefficients of European best practice guides [38].

MATERIALS AND METHODS

Patients

This retrospective study assessed exclusively adult patients with ESFT who received treatment according to the Euro-Ewing 99 protocol [6, 23] during the period 2010-2015, in 3 oncological centers. All patients had histological confirmation of Ewing sarcoma at diagnosis with surgical biopsy and (at the same time) underwent local extent primary tumor evaluation with MRI complemented with thoraco-abdomino-pelvic CT and FDG-PET/CT for metastatic assessment before treatment. Metastatic status was confirmed by biopsies only in equivocal cases.

For each patient, at baseline, recognised clinical prognostic factors for survival [4] as: age, gender, primary tumor location (axial or peripheral), tumor size (≥ 10 or < 10 cm), stage of disease (metastatic or localized), metastatic sites (lungs only, bone only or both sites), were collected.

All patients received before primary tumor surgery a neoadjuvant phase with Vincristine, Ifosfamide, Doxorubicin, and Etoposide (VIDE, 6 courses). Treatment response was assessed by pathological analysis with the percentage of viable tumor cells remaining after neoadjuvant chemotherapy. Good response was defined as $\geq 90\%$ necrosis, and poor response was defined as $< 90\%$ necrosis, according to the HuvoS-derived Salzer-Kuntschik grading system [9, 24]. Patients with a good histological response received adjuvant chemotherapy with Vincristine, Dactinomycin, and Cyclophosphamide/Ifosfamide (VAI/VAC). Patients with a poor primary tumor histological response received a consolidation phase with high-dose therapy (Busulfan and Melphalan regimen) followed by hematopoietic stem cell rescue. Patients with persistent metastasis before surgery underwent radiotherapy associated to adjuvant chemotherapy (VAI/VAC). Clinical follow-up was identical in the 3 oncological centers. Relapse was clinically suspected and documented by MRI and/or CT +/- FDG-PET/CT.

All patients received written information and we obtained informed consent from all of them allowing the use of their clinical data for research purposes under a protocol approved by the ethics committee.

FDG-PET/CT acquisition

After 6 h of fasting, 3 MBq/kg of ^{18}F -FDG was injected intravenously (after recording blood glucose level). After an average of 62 +/- 5 min of resting, whole body FDG-PET/CT imaging was recorded in supine position from the skull to the toes with arms at sides. Images were acquired on

a Siemens Biograph mCT (n = 27), Philips Gemini (TF16, n = 3) and GEMS Discovery ST (n = 2). First, CT acquisition was performed with a multislice spiral CT scanner (dose modulation with a quality reference of 120 kV, 80 mAs, 3 mm slice thickness and a pitch of 0.75). Then, a whole body PET acquisition of the same axial range was done with the patient in the same position.

FDG-PET/CT visual analysis

Besides the primary tumor, any FDG foci that could not be explained by physiological uptake, benign disease or traumas, was considered as metastasis.

Pulmonary lesions showing the characteristic appearance of metastasis on CT scan (well-circumscribed rounded lesions with soft tissue attenuation, location in the periphery of the lung, absence of calcification, multiple nodules of variable size, 'canon ball' opacities, presence of 'feeding vessel sign') [13] were taken as positive even if no FDG uptake was observed.

FDG-PET/CT quantitative analysis

The maximum, peak, and mean SUV values (SUV_{max} , SUV_{peak} , SUV_{mean}), as well as MTV (metabolic tumor volume) and TLG (total lesion glycolysis), were calculated on primary tumor. SUV_{peak} was the maximum value inside the boundary of the tumor of the mean SUV calculated within a 1 cm³ sphere. The SUV_{mean} , MTV and TLG of primary tumor were measured using PlanetOnco (Dosisoft, France). MTV was measured with different segmentation techniques: fixed at 2.5 ($MTV_{2.5}$) and 40% SUV_{max} ($MTV_{40\%}$) thresholds (25, 26). SUV_{mean} measured in the derived MTVs are designated as $SUV_{mean2.5}$ and $SUV_{mean40\%}$. TLG is the product of MTV and SUV_{mean} .

Statistical analyses

Overall survival (OS) was measured from date of FDG-PET/CT to specific death and progression free survival (PFS) was the time interval from date of FDG-PET/CT to relapse or progression disease; survivors were censored at the time of last contact.

Correlation between primary maximal tumor diameter and MTV (2.5 and 40%) was calculated by Spearman rho. We tested the possible correlation between PFS, OS and FDG-PET/CT-derived quantitative parameters (SUV_{max} , SUV_{peak} , $SUV_{mean2.5}$, $SUV_{mean40\%}$, $MTV_{2.5}$, $MTV_{40\%}$, $TLG_{2.5}$, $TLG_{40\%}$), as well as international clinical prognostic parameters registered at baseline (age, tumor size, location, gender and stage of disease).

The Kaplan-Meier method was used to estimate OS and PFS with group comparisons made using the log-rank test. Univariate and multivariate analyses of imaging and clinical parameters were carried out using Cox regression model.

As SUV_{max} and SUV_{peak} are highly correlated, a multivariate analysis was performed using SUV_{max} and SUV_{peak} separately with significant clinical parameters in univariate analysis (gender and metastatic disease status only) (model 1 and 2). Optimal cut offs were assessed using the « findcut » SAS macro made from method of Contal and O'Quigley (1999) and FDR q-values were calculated.

All tests were two-sided and P-value < 0.05 was considered to indicate statistical significance.

Statistical analyses were performed using Stata 13.1 SE (StataCorp, College Station, Texas, USA). Quantitative values were expressed as mean \pm standard deviation or median and range as appropriate.

CONCLUSION

FDG-PET/CT, already recommended at ESFT diagnosis for initial staging, can also be an useful tool for predicting long-term outcome in adult patients through semi-quantitative parameters as SUV_{max} and SUV_{peak} . Further research is warranted to confirm these results.

Author contributions

Conception and design: B Jamet, C Rousseau

Development of methodology: T Carlier, L Ferrer, L Campion, B Jamet, C Rousseau

Data collection: E Bompas, S Girault, F Borrelly, M Rousseau, Y Venel, B Jamet,

Analysis and interpretation of data: L Campion, B Jamet, C Rousseau

Writing, review of manuscript: B Jamet, T Carlier, L Campion, F Kraeber-Bodéré, C Rousseau

Study supervision: C Rousseau.

ACKNOWLEDGMENTS

This work has been supported in part by grants from the French National Agency for Research (Investissements d'Avenir), LabexIRONno.ANR-11-LABX-0018-01 and EquipexArronaxPlus no. ANR-11-EQPX-0004. The authors' gratitude goes to the patients of the study and the nuclear medicine technologists of all Hospital Centers.

CONFLICTS OF INTEREST

The authors declare no conflicts of interest.

FUNDING

None declared.

COMPLIANCE WITH ETHICAL STANDARDS

Ethical approval

All procedures performed in studies involving human participants were in accordance with the ethical standards of the institutional and national research committee and with the 1964 Helsinki declaration and its later amendments or comparable ethical standards.

Informed consent was obtained from all individual participants included in the study.

REFERENCES

1. Ludwig JA. Ewing sarcoma: historical perspectives, current state-of-the-art, opportunities for targeted therapy in the future. *Curr Opin Oncol.* 2008; 20:412-8.
2. Jurgens H, Dirksen U. Ewing sarcoma treatment. *Eur J Cancer.* 2011; 47: S366-367.
3. Hawkins DS, T Boiling, S Dubois. Ewing sarcoma. PA Pizzo, DG Poplack (Eds.), Principles and practice of paediatric oncology (6th edn.), Wolters Kluwer, Lippincott Williams & Wilkins, Philadelphia, 2010.
4. Duchman KR, Yubo Gao, Benjamin J. Miller. Prognostic Factors for Survival in Patients with Ewing's Sarcoma Using the Surveillance, Epidemiology, End Results (SEER) Program Database. *Cancer Epidemiology.* 2015; 2:189-95.
5. Esiashvili N, Goodman M, Marcus Jr RB. Changes in incidence and survival of Ewing sarcoma patients over the past 3 decades: Surveillance Epidemiology and End Results data. *J Pediatr Hematol Onc.* 2008; 30:425-30.
6. Ladenstein R, Pötschger U, Le Deley MC, Whelan J, Paulussen M, Oberlin O, van den Berg H, Dirksen U, Hjorth L, Michon J, Lewis I, Craft A, Jürgens H. Primary disseminated multifocal Ewing sarcoma: Results of the Euro-EWING 99 trial. *J Clin Oncol.* 2010; 28:3284-3291.
7. Rodriguez-Galindo C, Navid F, Liu T, Billups CA, Rao BN, Krasin MJ. Prognostic factors for local and distant control in Ewing sarcoma family of tumors. *Ann Oncol.* 2008; 19:814-20.
8. Paulussen M, Craft AW, Lewis I, Hackshaw A, Douglas C, Dunst J, Schuck A, Winkelmann W, Köhler G, Poremba C, Zoubek A, Ladenstein R, van den Berg H, et al. European Intergroup Cooperative Ewing's Sarcoma Study-92: Results of the EICESS-92 study: Two randomized trials of Ewing's sarcoma treatment—Cyclophosphamide compared with ifosfamide in standard-risk patients and assessment of benefit of etoposide added to standard treatment in high-risk patients. *J Clin Oncol.* 2008; 26:4385-4393.
9. Oberlin O, Deley MC, Bui BN, Gentet JC, Philip T, Terrier P, Carrie C, Mechinaud F, Schmitt C, Babin-Boilletot A, Michon J. Prognostic Factors in Localized Ewing's Tumours and Peripheral Neuroectodermal Tumours: The Third Study of the French Society of Paediatric Oncology

- (EW88 Study). *British Journal of Cancer* 85. 2001;11: 1646-54.
10. Bacci G, Ferrari S, Bertoni F, Rimondini S, Longhi A, Bacchini P, Forni C, Manfrini M, Donati D, Picci P. Prognostic factors in non-metastatic Ewing's sarcoma of bone treated with adjuvant chemotherapy: Analysis of 359 patients at the Istituto Ortopedico Rizzoli. *J Clin Oncol*. 2000; 18:4-11.
 11. Treglia G, Salsano M, Stefanelli A, Mattoli MV, Giordano A, Bonomo L. Diagnostic accuracy of 18F-FDG-PET and PET/CT in patients with Ewing sarcoma family tumours: a systematic review and a meta-analysis. *Skeletal Radiol*. 2012; 41:249-56.
 12. Newman EN, Jones RL, Hawkins DS. An evaluation of [F-18]-fluorodeoxy-D-glucose positron emission tomography, bone scan, bone marrow aspiration/biopsy as staging investigations in Ewing sarcoma. *Pediatr Blood Cancer*. 2013; 60:1113-7.
 13. Sharma P, Khangembam BC, Suman KC, Singh H, Rastogi S, Khan SA, Bakhshi S, Thulkar S, Bal C, Malhotra A, Kumar R. Diagnostic accuracy of 18F-FDG PET/CT detecting recurrence in patients with primary skeletal Ewing sarcoma. *Eur J Nucl Med Mol I*. 2013; 40:1036-43.
 14. Völker T, Denecke T, Steffen I, Misch D, Schönberger S, Plotkin M, Ruf J, Furth C, Stöver B, Hautzel H, Henze G, Amthauer H. Positron emission tomography for staging of pediatric sarcoma patients: results of a prospective multicenter trial. *J Clin Oncol*. 2007; 25:5435-41.
 15. Franzius C, Daldrup-Link HE, Wagner-Bohn A, Sciuk J, Heindel WL, Jürgens H, Schober O. FDG-PET for detection of recurrences from malignant primary bone tumors: comparison with conventional imaging. *Ann Oncol*. 2002; 13:157-60.
 16. Györke T, Zajic T, Lange A, Schäfer O, Moser E, Makó E, Brink I. Impact of FDG PET for staging of Ewing sarcomas and primitive neuroectodermal tumours. *Nucl Med Commun*. 2006; 27:17-24.
 17. Guimarães JB, Rigo L, Lewin F, Emerick A. The importance of PET/CT in the evaluation of patients with Ewing tumors. *Radiol Bras*. 2015; 48:175-180.
 18. Hawkins DS, Schuetze SM, Butrynski JE, Rajendran JG, Vernon CB, Conrad EU 3rd, Eary JF. [18F] Fluorodeoxyglucose positron emission tomography predicts outcome for Ewing sarcoma family of tumors. *J Clin Oncol*. 2005; 23:8828-34.
 19. Raciborska A, Bilska K, Drabko K, Michalak E, Chaber R, Pogorzała M, Polczyńska K, Sobol G, Wiecek M, Muszyńska-Roslan K, Rychłowska-Pruszyńska M, Rodriguez-Galindo C, Dziuk M. Response to Chemotherapy Estimates by FDG PET Is an Important Prognostic Factor in Patients with Ewing Sarcoma. *Clinical & Translational Oncology*. 2016; 18:189-95.
 20. Gupta K, Pawaskar A, Basu S, Rajan MG, Asopa RV, Arora B, Nair N, Banavali S. Potential role of FDG PET imaging in predicting metastatic potential and assessment of therapeutic response to neoadjuvant chemotherapy in Ewing sarcoma family of tumors. *Clin Nucl Med*. 2011; 36:973-7.
 21. Gaston LL, Di Bella C, Slavin J, Hicks RJ, Choong PF. 18F-FDG PET response to neoadjuvant chemotherapy for Ewing sarcoma and osteosarcoma are different. *Skeletal Radiol*. 2011; 40:1007-15.
 22. Hwang JP, Lim I, Kong CB, Jeon DG, Byun BH, Kim BI, Choi CW, Lim SM. Prognostic Value of SUVmax Measured by Pretreatment Fluorine-18 Fluorodeoxyglucose Positron Emission Tomography/Computed Tomography in Patients with Ewing Sarcoma. *PloS One* 11. 2016: e0153281. <https://doi.org/10.1371/journal.pone.0153281>.
 23. Juergens C, Weston C, Lewis I, Whelan J, Paulussen M, Oberlin O, Michon J, Zoubek A, Juergens H, Craft A. Safety assessment of intensive induction with vincristine, ifosfamide, doxorubicin, etoposide (VIDE) in the treatment of Ewing tumors in the EURO-E.W.I.N.G.99 clinical trial. *Pediatr Blood Cancer*. 2006. 47:22-29.
 24. Le Deley MC, Paulussen M, Lewis I, Brennan B, Ranft A, Whelan J, Le Teuff G, Michon J, Ladenstein R, Marec-Bérard P, van den Berg H, Hjorth L, Wheatley K, et al. Cyclophosphamide compared with ifosfamide in consolidation treatment of standard-risk Ewing sarcoma: Results of the randomized non inferiority Euro-EWING99-R1 trial. *J Clin Oncol*. 2014; 32:2440-2448.
 25. Bryant AS, Cerfolio RJ. The Maximum Standardized Uptake Values on Integrated FDG-PET/CT Is Useful in Differentiating Benign from Malignant Pulmonary Nodules. *The Annals of Thoracic Surgery*. 2006; 82:1016-20.
 26. Erdi YE, Mawlawi O, Larson SM, Imbriaco M, Yeung H, Finn R, JL Humm. Segmentation of Lung Lesion Volume by Adaptive Positron Emission Tomography Image Thresholding. *Cancer*. 1997; 80:2505-9.
 27. Kubo T, Furuta T, Johan MP, Ochi M. Prognostic Significance of (18) F-FDG PET at Diagnosis in Patients with Soft Tissue Sarcoma and Bone Sarcoma; Systematic Review and Meta-Analysis. *European Journal of Cancer*. 2016; 58:104-11.
 28. Lee J, Hoang BH, Ziogas A, Zell JA. Analysis of Prognostic Factors in Ewing Sarcoma Using a Population-Based Cancer Registry. *Cancer*. 2010; 116:1964-73.
 29. López G, Márquez-Vega JLC, Ramírez-Villar GL, Cabrera P, Ordóñez R, Praena-Fernández JM, Ortiz MJ. Prognostic Factors for Overall Survival in Paediatric Patients with Ewing Sarcoma of Bone Treated according to Multidisciplinary Protocol. *Clinical & Translational Oncology*. 2012; 14:294-301.
 30. Tylski P, Stute S, Grotus N, Hapdey S, Gardin I, Vanderlinden B, Buvat I. Comparative Assessment of Methods for Estimating Tumor Volume and Standardized Uptake Value in (18) F-FDG PET. *J Nucl Med*. 2010; 51:268-76.

31. Vanderhoek, M, Perlman SB, Jeraj R. Impact of the Definition of Peak Standardized Uptake Value on Quantification of Treatment Response. *J Nucl Med.* 2012; 1:4-11.
32. Visvikis, D, Hatt M, Tixier F, Cheze Le Rest C. The Age of Reason for FDG PET Image-Derived Indices. *Eur J Nucl Med Mol I.* 2012; 39:1670-72.
33. Cazaentre T, Morschhauser F, Vermandel M, Betrouni N, Prangère T, Steinling M, Huglo D. Pre-Therapy 18F-FDG PET Quantitative Parameters Help in Predicting the Response to Radioimmunotherapy in Non-Hodgkin Lymphoma. *Eur J Nucl Med Mol I.* 2010; 37:494-504.
34. Hatt M, Visvikis D, Pradier O, Cheze-le Rest C. "Baseline ¹⁸F-FDG PET Image-Derived Parameters for Therapy Response Prediction in Oesophageal Cancer." *Eur J Nucl Med Mol I.* 2011; 38:1595-1606.
35. Ulaner GA, Eaton A, Morris PG, Lilienstein J, Jhaveri K, Patil S, Fazio M, Larson S, Hudis CA, Jochelson MS. Prognostic value of quantitative fluorodeoxyglucose measurements in newly diagnosed metastatic breast cancer. *Cancer Med.* 2013; 2:725-733.
36. Im HJ, Pak K, Cheon GJ, Kang KW, Kim SJ, Kim IJ, Chung JK, Kim EE, Lee DS. Prognostic value of volumetric parameters of ¹⁸F-FDG PET in non-small-cell lung cancer: a meta-analysis. *Eur J Nucl Med Mol I.* 2014; 42:241-51.
37. Hatt M, Visvikis D, Albarghach NM, Tixier F, Pradier O, Cheze-le Rest C. Prognostic value of 18F-FDG PET image-based parameters in oesophageal cancer and impact of tumour delineation methodology. *Eur J Nucl Med Mol I.* 2011; 38:1191-1202.
38. Kelly MD, Declerck JM. SUVref: reducing reconstruction-dependent variation in PET SUV. *EJNMMI Res.* 2011; 1:16.