

Contribution of chronic diseases to the disability burden in a population 15 years and older, Belgium, 1997–2008

Renata Yokota, Nicolas Berger, Wilma Nusselder, Jean-Marie Robine, Jean Tafforeau, Patrick Deboosere, Herman Van Oyen

► **To cite this version:**

Renata Yokota, Nicolas Berger, Wilma Nusselder, Jean-Marie Robine, Jean Tafforeau, et al.. Contribution of chronic diseases to the disability burden in a population 15 years and older, Belgium, 1997–2008. BMC Public Health, BioMed Central, 2015, 15 (1), pp.229. <10.1186/s12889-015-1574-z>. <inserm-01264469>

HAL Id: inserm-01264469

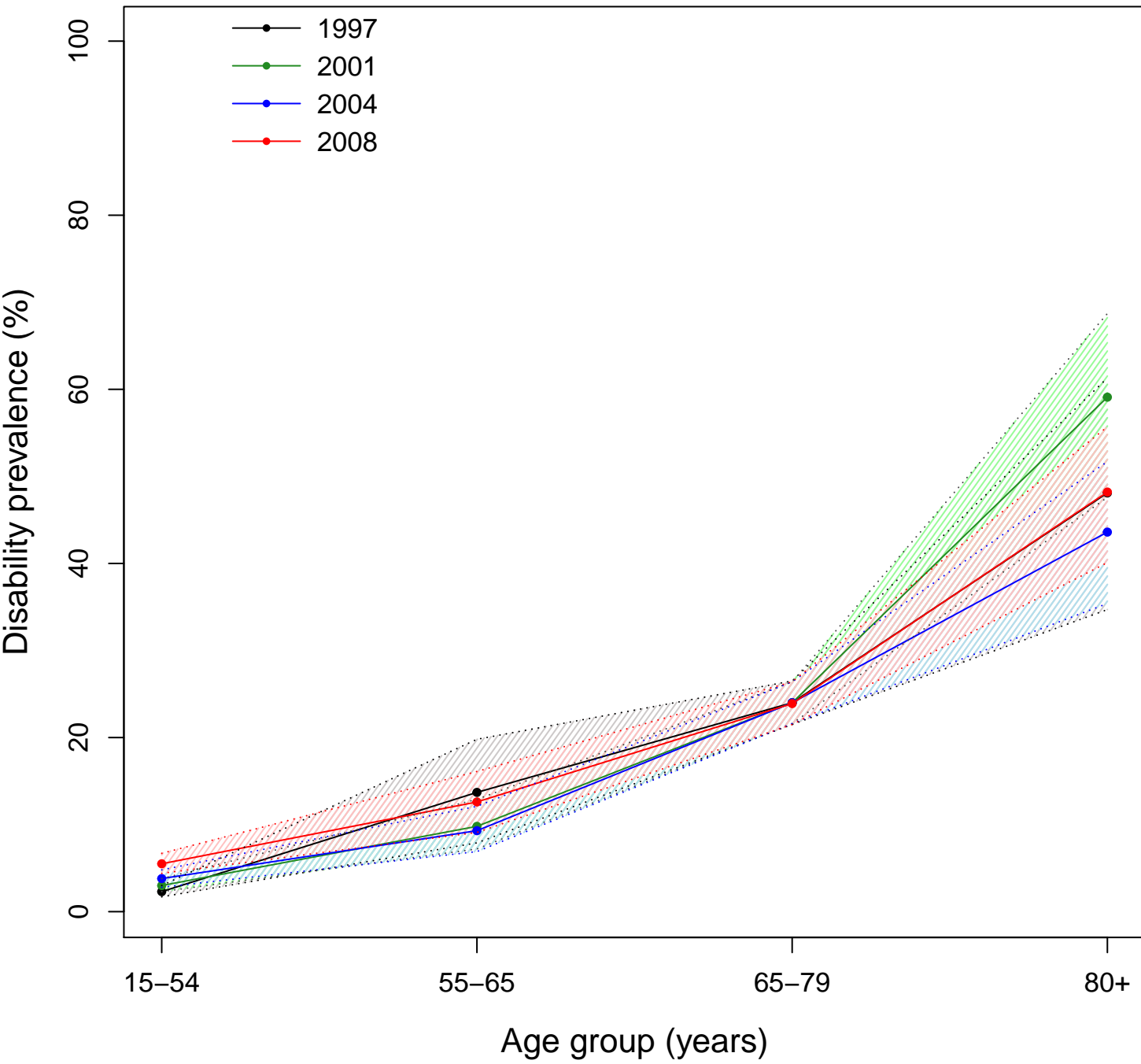
<http://www.hal.inserm.fr/inserm-01264469>

Submitted on 29 Jan 2016

HAL is a multi-disciplinary open access archive for the deposit and dissemination of scientific research documents, whether they are published or not. The documents may come from teaching and research institutions in France or abroad, or from public or private research centers.

L'archive ouverte pluridisciplinaire **HAL**, est destinée au dépôt et à la diffusion de documents scientifiques de niveau recherche, publiés ou non, émanant des établissements d'enseignement et de recherche français ou étrangers, des laboratoires publics ou privés.

Men



Women

