

# Comparison between 3D Supersonic Shear Wave Elastography and Magnetic Resonance Elastography: a preliminary experimental study

Jinlong Yue, Marion Tardieu, Felicia Julea, Linda Chami, Olivier Lucidarme, Xavier Maître, Claire Pellot-Barakat

► **To cite this version:**

Jinlong Yue, Marion Tardieu, Felicia Julea, Linda Chami, Olivier Lucidarme, et al.. Comparison between 3D Supersonic Shear Wave Elastography and Magnetic Resonance Elastography: a preliminary experimental study. Journées RITS 2015, Mar 2015, Dourdan, France. Actes des Journées RITS 2015, pp 142-143, 2015. <inserm-01155015>

**HAL Id: inserm-01155015**

**<http://www.hal.inserm.fr/inserm-01155015>**

Submitted on 26 May 2015

**HAL** is a multi-disciplinary open access archive for the deposit and dissemination of scientific research documents, whether they are published or not. The documents may come from teaching and research institutions in France or abroad, or from public or private research centers.

L'archive ouverte pluridisciplinaire **HAL**, est destinée au dépôt et à la diffusion de documents scientifiques de niveau recherche, publiés ou non, émanant des établissements d'enseignement et de recherche français ou étrangers, des laboratoires publics ou privés.



# Comparison between 3D Supersonic Shear Wave Elastography and Magnetic Resonance Elastography: a preliminary experimental study

J.L. Yue<sup>1 2 3\*</sup>, M. Tardieu<sup>1</sup>, F. Julea<sup>1</sup>, L. Chami<sup>4</sup>, O. Lucidarme<sup>4</sup>, X. Maître<sup>1</sup>, C. Pellot-Barakat<sup>2 3</sup>

<sup>1</sup> Imagerie par Résonance Magnétique Médicale et Multi-Modalités, IR4M, CNRS, Univ Paris-Sud, Orsay, FRANCE.

<sup>2</sup> Imagerie Moléculaire in vivo, IMIV, UMR 1023 Inserm/CEA/Univ Paris-Sud-ERL 9218 CNRS, CEA/I2BM/SHFJ, Orsay, FRANCE.

<sup>3</sup> Laboratoire d'Imagerie Biomédicale, INSERM, CNRS, Univ Pierre et Marie Curie, Paris, FRANCE.

<sup>4</sup> Service de Radiologie, Hôpital Pitié-Salpêtrière, APHP, Paris, FRANCE

\* Corresponding author: yuejinlong48@gmail.com

**Abstract - Ultrasound Supersonic Shear Wave Elastography (SSWE) as well as Magnetic Resonance Elastography (MRE) allow accessing the mechanical properties of human tissues. SSWE is usually performed using a 2D probe. 3D SSWE is now available but needs to be validated. We compared 3D SSWE with both 2D SSWE and MRE which is inherently 3D on a breast phantom. We found that 3D SSWE is reproducible and provides elasticity estimates comparable to those obtained with the validated 2D SSWE. We also showed that 3D SSWE and MRE exhibit quite different elasticity moduli, but they reveal similar qualitative trends in the phantom. Although no relationship could be drawn between the two modalities, this study provides a first basis for comparison and a guide for potential improvements.**

**Index Terms - Biomechanics, Magnetic Resonance Imaging, Ultrasound, Elastography**

## I. INTRODUCTION

Elasticity imaging has emerged recently and is rapidly evolving. Among different approaches, Ultrasound Supersonic Shear Wave Elastography (SSWE) and Magnetic Resonance Elastography (MRE) have particular attractive perspectives for clinical applications. The two modalities are different on principles, experimental conditions and reconstruction methods. It should thus be meaningful to compare the two modalities in order to get a better understanding of the mechanical properties of human tissues. There has been some research dedicated to the specific comparison of the two modalities in 2D dimension [1]. Since 3D SSWE is now available, a 3D comparison of the two modalities optimizing the registration between the elastograms can be performed. This is the aim of this work. Since 3D SSWE has not yet been deeply investigated, a first study is carried out here to validate the reliability of 3D SSWE.

## II. MATERIALS AND METHODS

### II.1. Reproducibility of 3D SSWE and comparison with 2D SSWE

A breast phantom containing homogeneous inclusions and background (model 059, CIRS, Norfolk, VA, USA) was imaged by the Aixplorer ultrasound system (Supersonic Imagine, Aix-en-Provence, France). First, ten acquisitions

of the same inclusion were performed by the same operator using a 3D probe (SLV16-5 MHz) while repositioning the probe between each acquisition. Five different inclusions were then imaged using a 2D transducer (SL15-4 MHz) as well as the 3D transducer to validate 3D SSWE. The pixel size was  $0.2 \times 0.2 \text{ mm}^2$ . The different slices of the inclusions were scanned with the 2D transducer in order to get a better registration with the 3D transducer. An automatic thresholding segmentation was performed to extract the mean elasticity  $E_{\text{mean}}$  and standard deviation  $SD$  of each inclusion.

### II.2. Comparison between 3D SSWE and MRE

A more realistic breast phantom with inclusions embedded in heterogeneous background (model 073, CIRS, Norfolk, VA, USA) was used for the comparison. First, one selected dense inclusion was imaged using the 3D transducer of the Aixplorer. Next, the whole phantom was imaged and mechanically characterized at 85 Hz on a 1.5T MR Scanner (Achieva, Philips Healthcare, Best, The Netherlands) with a dual flexible coil (Flex-M, Philips Healthcare, Best, The Netherlands). The voxel size was  $2 \times 2 \times 2 \text{ mm}^3$ . The 3D maps of shear elastic modulus were inferred by inversion of the equation of motion [2]. External markers were used to identify the corresponding inclusion in 3D SSWE and MRE. A manual segmentation was performed to extract the  $E_{\text{mean}}$  and  $SD$  values in the selected inclusion.

## III. RESULTS

The variability for the  $E_{\text{mean}}$  values between ten acquisitions of 3D SSWE is smaller than 5%. Figure 1(a) represents the five investigated inclusions in the first phantom. Figure 1(b) represents a typical SSW elastogram of inclusion 4. Figure 2 shows that 3D SSWE and 2D SSWE measurements are comparable. The  $E_{\text{mean}}$  and  $SD$  values obtained by the 3D probe tend to be lower than that obtained by the 2D probe. Figure 3 represents the B-mode image, the SSW elastogram, the magnitude image, the MR elastogram of the selected inclusion in the second phantom. The  $E_{\text{mean}}$  values of the selected inclusion and its background obtained by two modalities are reported in Table 1. Elasticity values of 3D SSWE are more than three times higher than that of MRE, while the ratio between inclusion and background are similar between the two modalities.

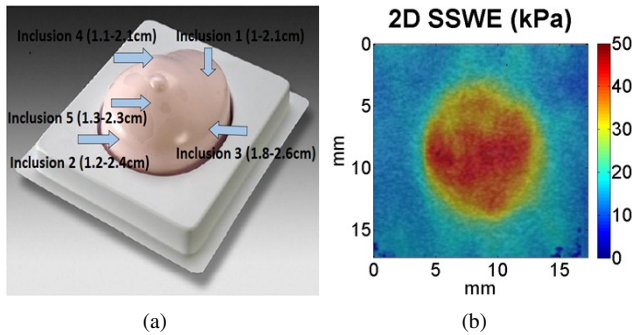


Figure 1: (a) Position of the imaged inclusions in the breast phantom (model 059) (b) SSW elastogram of one slice of inclusion 4 obtained by 2D SSWE

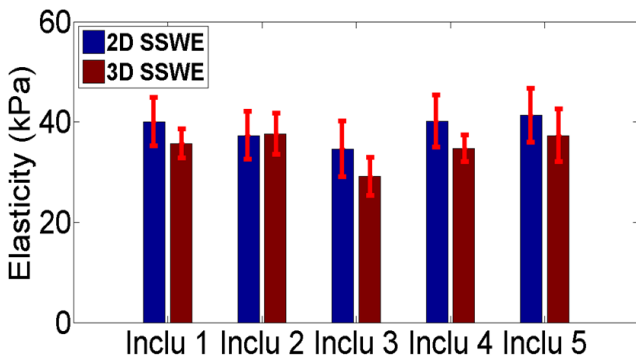


Figure 2:  $E_{mean}$  and  $SD$  values obtained by the 2D (blue) and 3D (red) probes for 5 inclusions

	3D SSWE	MRE
Inclusion (kPa)	$45.4 \pm 8.1$	$14.3 \pm 1.9$
Background (kPa)	$24.7 \pm 1.6$	$6.9 \pm 0.2$
Ratio	1.84	2.07

Table 1:  $E_{mean}$  obtained by 3D SSWE and MRE

#### IV. DISCUSSION-CONCLUSION

It was proven that 3D SSWE measurements are reproducible, and seem to be more precise than 2D ones, as shown by the lower values of  $SD$  obtained in homogeneous regions of interest. The  $E_{mean}$  values of 3D SSWE measurements are in average about 10% lower than that of 2D ones, which is opposite to the literature [3]. Many factors could explain this difference. The major explanation could be that the in vivo breast masses measured in the literature exhibited inhomogeneous elastic properties and complex structures, since only one slice of the mass was considered for comparison between 2D and 3D SSWE. It is thus very likely that the registration was incomplete. In our study the inclusions had homogeneous elastic properties and simple structures (spherical inclusions) and we imaged different slices in 2D in order to get a full registration with the 3D probe.

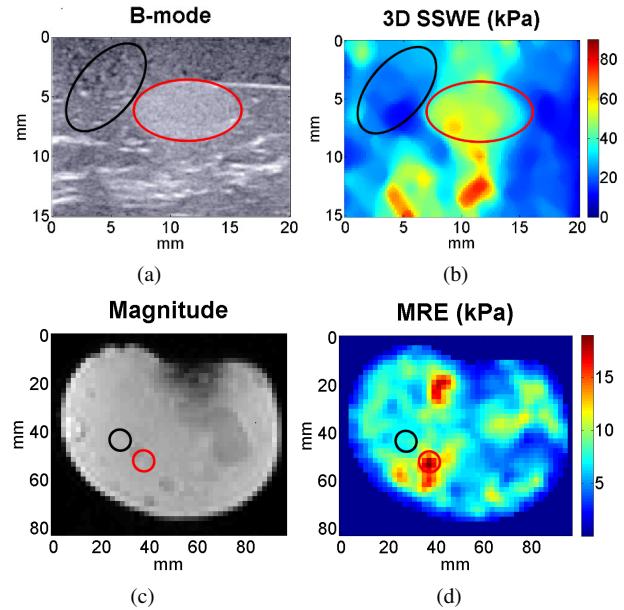


Figure 3: (a) B-mode image (b) SSW elastogram (c) Magnitude image (d) MR elastogram. The red and black ellipses represent the segmented inclusion and a region of the background (around 40 mm<sup>2</sup>)

We found that SSWE provided much higher elasticity values than MRE, while the ratio between inclusion and background was about the same with both modalities. The different excitation wave frequencies seem to be the major element of discrepancy between the two modalities (around 350 Hz for 3D SSWE and 85 Hz for MRE), because the elasticities measured in both modalities are frequency-dependent. To improve the precision of the comparison study, the spatial resolution of MR elastograms will be increased; meanwhile rheological models will be used to link the elasticity values recorded by both modalities; finally more advanced segmentation methods will be used to better extract the values within the inclusions.

In conclusion, the study demonstrates the reliability of 3D SSWE, and it sustains the need for rheological modeling to properly challenge SSWE and MRE.

#### REFERENCES

- [1] M. Tanter, et al. "L'élastographie par ultrasons ou résonance magnétique: de nouveaux outils de diagnostic en cancérologie", *Médecine Nucléaire*, 2007, Vol. 31, pp. 132-141.
- [2] R. Sinkus, et al. "Viscoelastic shear properties of in vivo breast lesions measured by MR elastography", *Magnetic Resonance Imaging*, 2005, Vol. 23, pp. 159-165.
- [3] S. H. Lee, et al. "Differentiation of benign from malignant solid breast masses: comparison of two-dimensional and three-dimensional shear-wave elastography", *European radiology*, 2013, Vol. 23, pp. 1015-1026.