

Non-invasive ventilation for acute hypoxemic respiratory failure: intubation rate and risk factors.

Arnaud Thille, Damien Contou, Chiara Fragnoli, Ana Córdoba-Izquierdo, Florence Boissier, Christian Brun-Buisson

► **To cite this version:**

Arnaud Thille, Damien Contou, Chiara Fragnoli, Ana Córdoba-Izquierdo, Florence Boissier, et al.. Non-invasive ventilation for acute hypoxemic respiratory failure: intubation rate and risk factors.. Critical Care, BioMed Central, 2013, 17 (6), pp.R269. <10.1186/cc13103>. <inserm-00925322>

HAL Id: inserm-00925322

<http://www.hal.inserm.fr/inserm-00925322>

Submitted on 7 Jan 2014

HAL is a multi-disciplinary open access archive for the deposit and dissemination of scientific research documents, whether they are published or not. The documents may come from teaching and research institutions in France or abroad, or from public or private research centers.

L'archive ouverte pluridisciplinaire **HAL**, est destinée au dépôt et à la diffusion de documents scientifiques de niveau recherche, publiés ou non, émanant des établissements d'enseignement et de recherche français ou étrangers, des laboratoires publics ou privés.

RESEARCH

Open Access

Non-invasive ventilation for acute hypoxemic respiratory failure: intubation rate and risk factors

Arnaud W Thille^{1,2,3*}, Damien Contou^{1,3}, Chiara Fragnoli¹, Ana Córdoba-Izquierdo¹, Florence Boissier¹ and Christian Brun-Buisson^{1,3}

Abstract

Introduction: We assessed rates and predictive factors of non-invasive ventilation (NIV) failure in patients admitted to the intensive care unit (ICU) for non-hypercapnic acute hypoxemic respiratory failure (AHRF).

Methods: This is an observational cohort study using data prospectively collected over a three-year period in a medical ICU of a university hospital.

Results: Among 113 patients receiving NIV for AHRF, 82 had acute respiratory distress syndrome (ARDS) and 31 had non-ARDS. Intubation rates significantly differed between ARDS and non-ARDS patients (61% versus 35%, $P = 0.015$) and according to clinical severity of ARDS: 31% in mild, 62% in moderate, and 84% in severe ARDS ($P = 0.0016$). In-ICU mortality rates were 13% in non-ARDS, and, respectively, 19%, 32% and 32% in mild, moderate and severe ARDS ($P = 0.22$). Among patients with moderate ARDS, NIV failure was lower among those having a $\text{PaO}_2/\text{FiO}_2 > 150$ mmHg (45% vs. 74%, $p = 0.04$). NIV failure was associated with active cancer, shock, moderate/severe ARDS, lower Glasgow coma score and lower positive end-expiratory pressure level at NIV initiation. Among intubated patients, ICU mortality rate was 46% overall and did not differ according to the time to intubation.

Conclusions: With intubation rates below 35% in non-ARDS and mild ARDS, NIV stands as the first-line approach; NIV may be attempted in ARDS patients with a $\text{PaO}_2/\text{FiO}_2 > 150$. By contrast, 84% of severe ARDS required intubation and NIV did not appear beneficial in this subset of patients. However, the time to intubation had no influence on mortality.

Introduction

It is now well-demonstrated that non-invasive ventilation (NIV) can reduce intubation and mortality rates in patients with severe acute exacerbation of chronic obstructive pulmonary disease [1-3] or cardiogenic pulmonary edema [4]. By contrast, the beneficial effects of NIV remain unclear in patients with *de novo* acute hypoxemic respiratory failure (AHRF), that is, non-hypercapnic patients having acute respiratory failure in the absence of a cardiac origin or underlying chronic pulmonary disease. NIV is more likely to fail in hypoxemic patients [5], and NIV failure could be associated with increased mortality [6]. In unselected patients admitted to ICUs for AHRF, the rate of intubation is

particularly high, reaching 60% [6,7], and their in-ICU mortality after intubation may exceed 60% [6-8]. Thus, NIV may improve outcome of patients who succeed in NIV by avoiding intubation, but may worsen outcome by delaying intubation in those having failed NIV.

Despite these concerns, surveys show that NIV is increasingly used in patients having AHRF and is initiated as first-line ventilatory support in 20% to 30% of such patients [5,7]. NIV has even been used as the first-line ventilatory support in patients having clinical criteria for acute respiratory syndrome (ARDS) [9,10] with a success rate of more than 50%, especially in patients with prompt improvement of oxygenation [9]. The increasing popularity of NIV in AHRF patients is supported by some studies showing that NIV markedly reduced intubation and mortality rates in immunosuppressed patients [11,12] or in selected surgical patients with AHRF [13,14].

* Correspondence: aw.thille@gmail.com

¹Medical Intensive Care Unit, AP-HP, Henri Mondor University Hospital, Créteil, France

²Réanimation Médicale, CHU de Poitiers, 2 rue de la Milétrie, 86021, Poitiers, France

Full list of author information is available at the end of the article

However, few randomized controlled studies have been conducted in non-immunosuppressed patients with AHRF [15-18], and some of these included hypercapnic patients [15,16]. To date, only two randomized controlled studies have evaluated NIV in non-hypercapnic patients with AHRF [17,18], with one suggesting that NIV may reduce intubation rate and even mortality [18] and the other reporting no beneficial effects of continuous positive-end expiratory pressure without ventilatory assistance [17].

The aims of our study were to assess the rate of NIV failure in patients admitted for AHRF according to the presence and clinical severity of ARDS as recently defined [19], and to identify early predictors of NIV failure.

Material and methods

This observational cohort study was conducted in our 24-bed medical ICU at Henri Mondor University Hospital in Créteil, France. The Institutional Review Board of the French Society for Respiratory Medicine approved this non-interventional study and waived the need for informed consent.

Patients

All consecutive patients admitted during a three-year period (June 2008 to June 2011) and who received NIV as initial ventilatory support for AHRF were included. AHRF was defined as recent dyspnea with a respiratory rate >25 breaths/minute and/or sternocleidomastoid muscle activation with pulmonary infiltrates on chest X-ray, and a PaCO₂ below or equal to 45 mmHg. We excluded patients who were intubated before ICU admission or intubated upon ICU admission without prior NIV, and patients for whom NIV was used with a “do not intubate” order. However, the outcome for those who were directly intubated for acute respiratory failure without prior NIV, and who met clinical criteria for moderate or severe ARDS was also collected. The study was conducted after the implementation of a nurse-driven NIV protocol which included prospective daily collection of clinical data and ventilatory parameters on a specific NIV monitoring form. When the NIV form was unavailable or incomplete, data were retrieved from the patient’s records.

Non-invasive ventilation protocol and definitions

All stages of the protocol had been developed within a multidisciplinary working group including ICU physicians, nurses and respiratory therapists. The protocol aimed at empowering nurses to adjust the ventilatory settings and to improve the patient’s tolerance to NIV following a simple decision algorithm. A daily NIV prescription by the physician indicated the duration of NIV sessions and targeted expiratory tidal volume (around 6 to 8 ml/kg) and oxygen saturation (SpO₂) (≥94%).

Pressure-support (PS) ventilation was started using a pressure-support level of 8 cmH₂O, a positive end-expiratory pressure (PEEP) level of 5 cmH₂O, an inspiratory trigger of 3 L/minute, and a maximal inspiratory time of one second. The nurses then adjusted the ventilatory parameters, including pressure-support level and FiO₂ (fraction of inspired oxygen), according to the protocol. Pressure-support level was gradually increased by 2 cmH₂O steps to reach the target expiratory tidal volume and PEEP level was then adjusted as prescribed. FiO₂ was gradually adjusted by 5% steps to reach the targeted SpO₂. Non-invasive ventilation was applied intermittently for periods of at least two hours, with a minimal duration of six hours per day and was maintained until signs of respiratory distress improved. An algorithm was used by nurses in case of leaks, which involved first repositioning of the mask; second, reducing the PEEP level at 2 cmH₂O; third, reducing the pressure-support level by steps of 2 cmH₂O until the minimal expiratory volume was reached; and fourth, changing the mask interface.

A mobile cart containing all types and sizes of interfaces was available at the bedside during initiation of NIV. NIV was performed via a non-vented full-face mask (FreeMotion™ RT041, Fisher & Paykel, Auckland, New Zealand or Ultra Mirage™, Resmed, CA, USA), with an ICU ventilator using a dedicated NIV mode (Evita XL, Dräger, Lübeck, Germany, or Engström Carestation, GE Healthcare, Fairfield, CT, USA), equipped with a heated humidifier (MR850, Fisher & Paykel).

The following criteria were used for endotracheal intubation: loss of consciousness or psychomotor agitation hindering nursing care and requiring sedation; persistent hypotension (defined by systolic arterial blood pressure below 90 mmHg or mean arterial blood pressure below 65 mmHg) despite fluid resuscitation, or need for vasopressors; or two of the following criteria: frank worsening of respiratory distress under NIV, respiratory rate above 40 breaths per minute, SpO₂ remaining below 90% despite FiO₂ 100%, dependence to NIV for more than 12 hours, or pH <7.35. NIV failure was defined by the need for endotracheal intubation.

Data collection

From the NIV monitoring forms, we analyzed the number and duration of NIV sessions, ventilator settings (pressure support level, positive end-expiratory pressure, FiO₂), ventilatory parameters (SpO₂, respiratory rate, expiratory tidal volume), hemodynamic parameters (heart rate, blood pressure and level of consciousness assessed using the Richmond Agitation-Sedation Scale (RASS) [20], with altered consciousness defined as a RASS <0. NIV tolerance and number of leaks were recorded on a 4-point scale, then dichotomized into “acceptable”

(scored 2 to 3) or “poor” (scored 0 to 1) tolerance, and “minor” (scored 0 to 1) or “major” (scored 2 to 3) leaks, respectively. Blood gases were routinely measured one hour after initiation of NIV. Clinical data (respiratory rate, SpO₂, blood pressure, heart rate, Glasgow coma score) and blood gases at admission before NIV initiation were retrospectively collected from the medical chart. We also recorded the occurrence of shock at admission or at initiation of NIV (defined by hypoperfusion signs and administration of at least 30 ml/kg fluids, dobutamine or vasopressors).

Patients were stratified according to the presence of clinical criteria for ARDS. The severity of ARDS was stratified using the recent Berlin definition [19], according to the value of oxygenation recorded within the first hour after NIV initiation, and classified as mild ($201 \leq \text{PaO}_2/\text{FiO}_2$ (partial pressure of oxygen/fraction of inspired oxygen) ≤ 300 mmHg), moderate ($101 \leq \text{PaO}_2/\text{FiO}_2 \leq 200$ mmHg) or severe ($\text{PaO}_2/\text{FiO}_2 \leq 100$ mmHg).

Statistical analysis

Dichotomous variables are reported as number (percentage), and were compared using the chi-square or Fisher's exact tests. Continuous variables are expressed as mean (\pm standard deviation) or as median and interquartile range (IQR, (25th to 75th percentiles)) after testing their normal distribution using the Shapiro-Wilk test. Groups were compared using the unpaired Student's *t*-test or Wilcoxon rank-sum and Kruskal-Wallis tests, when appropriate. Odds ratios (OR) with 95% confidence intervals (CI) were used to describe differences between subgroups for NIV failure or death.

Survival without intubation was tested using Kaplan-Meier estimates and compared with the log-rank test. To evaluate independent factors associated with NIV failure, variables with a univariate *P*-value <0.10 were entered in a Cox proportional hazards model with time to intubation as the dependent variable, censoring data at ICU discharge. Among related variables, the most significant or clinically relevant was entered into the model in order to minimize the effect of colinearity. Because it was measured at 24 hours after admission, the general severity score SAPS 2 was not included in this analysis. Variables included in the model are reported with their corresponding hazard ratio (HR) and 95% CI. We considered two-tailed *P*-values <0.05 as significant. Statistical analyses were performed using the statistical software package STATA version 10.1 (Stata Corp., TX, USA).

Results

Patients

Among 430 patients who received NIV during the study period, 188 had non-hypercapnic acute respiratory failure. After excluding patients with cardiogenic pulmonary

edema and those without pulmonary infiltrates, 113 had *de novo* acute hypoxemic respiratory failure (Figure 1). Eighty-two patients had clinical criteria for ARDS at the time of NIV initiation, including 16 with mild (20%), 47 with moderate (57%) and 19 (23%) with severe ARDS. ARDS was due to bacterial pneumonia ($n = 21$), viral pneumonia ($n = 7$), pneumocystis jirovecii ($n = 4$), pneumonia without microbiological documentation ($n = 24$), aspiration ($n = 5$), alveolar hemorrhage ($n = 6$), drug induced pneumonia ($n = 5$), extra-pulmonary sepsis ($n = 8$), transfusion acute lung injury ($n = 1$), and fat embolism ($n = 1$). The 31 remaining patients without clinical criteria for ARDS (non-ARDS) had pneumonia ($n = 17$), atelectasis ($n = 5$), aspiration ($n = 4$), intra-alveolar hemorrhage ($n = 2$), pleural effusion ($n = 2$) or extra-pulmonary sepsis ($n = 1$). Overall, 50 patients (44%) were immunocompromised (Table 1), because of hematologic malignancy ($n = 22$), organ transplant ($n = 10$), HIV infection ($n = 6$), vasculitis or steroid therapy ($n = 4$) or active/metastatic solid cancer ($n = 8$).

Rates of NIV failure and in-ICU mortality

The rate of intubation was 61% (50/82) in ARDS and 35% (11/31) in non-ARDS patients ($P = 0.015$). This rate did not differ between patients without ARDS or those with mild ARDS ($P = 0.71$), but increased with increasing clinical severity of ARDS from 31% (5/16) in mild, 62% (29/47) in moderate, to 84% (16/19) in severe ARDS ($P = 0.0016$) (Figure 2). Patients with moderate or severe ARDS were twice as likely to fail NIV (45/66, 68%) than

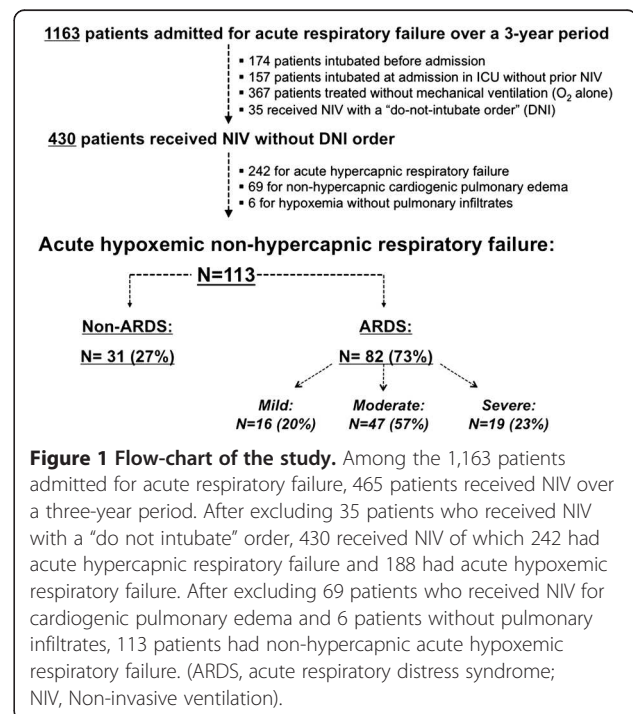


Table 1 Characteristics and outcomes of the patients receiving NIV for non-hypercapnic AHRF

| | No ARDS or mild ARDS (n = 47) | Moderate or severe ARDS (n = 66) | P |
|--|-------------------------------|----------------------------------|---------|
| Age, mean, years | 60 (± 15) | 61 (± 17) | 0.72 |
| Male sex, n (%) | 30 (64%) | 45 (68%) | 0.62 |
| SAPS II, points* | 33 (23 to 39) | 41 (30 to 51) | 0.0014 |
| Immunosuppression or cancer, n (%) | 17 (36%) | 33 (50%) | 0.15 |
| Characteristics at admission before NIV | | | |
| Sepsis, n (%) | 27 (73%) | 53 (70%) | 0.72 |
| Systolic arterial pressure, mmHg | 131 (± 25) | 127 (± 27) | 0.43 |
| Heart rate, beats/minute | 114 (± 25) | 110 (± 26) | 0.43 |
| Respiratory rate, cycles/minute | 33 (± 7) | 33 (± 7) | 0.78 |
| Glasgow coma scale, points* | 15 (15 to 15) | 15 (15 to 15) | 0.75 |
| pH, units* | 7.4 (7.43 to 7.49) | 7.45 (7.40 to 7.48) | 0.24 |
| PaCO ₂ , mm Hg | 34.6 (± 6.3) | 35.4 (± 5.0) | 0.43 |
| PaO ₂ , mm Hg | 77 (± 41) | 85 (± 54) | 0.43 |
| Bicarbonates, mmol/L | 25.0 (± 4.8) | 24.5 (± 5.0) | 0.58 |
| Lactates, mmol/L* | 1.4 (1.0 to 2.0) | 1.9 (1.1 to 2.6) | 0.054 |
| At 1 h of NIV initiation | | | |
| pH* | 7.46 (7.39 to 7.49) | 7.42 (7.38 to 7.46) | 0.03 |
| PCO ₂ , mm Hg | 36.1 (± 6.6) | 37.8 (± 7.4) | 0.21 |
| PaO ₂ /FIO ₂ , mm Hg* | 266 (219 to 330) | 124 (94 to 164) | <0.0001 |
| PEEP level, cm H ₂ O | 4.7 (± 1.1) | 4.5 (± 1.1) | 0.46 |
| PS level, cm H ₂ O* | 8.0 (6.5 to 10) | 8.0 (6 to 8) | 0.46 |
| Tidal volume, ml | 579 (± 174) | 613 (± 173) | 0.37 |
| Respiratory rate, breaths/minute* | 34.5 (25 to 40) | 32 (26 to 37.5) | 0.45 |
| Outcome | | | |
| Duration of NIV Day 1, hours* | 6.8 [4.0 to 10.0] | 5.2 [2.0 to 10.0] | 0.19 |
| Total duration of NIV, days* | 2.0 [1.0 to 3.0] | 1.0 [1.0 to 2.5] | 0.17 |
| Rate of NIV Failure, n (%) | 16 (34%) | 45 (68%) | 0.0003 |
| Length of stay in ICU, days* | 8.0 [5.0 to 15.0] | 10.0 [6.0 to 14.0] | 0.53 |
| ICU mortality, n (%) | 7 (15%) | 21 (32%) | 0.04 |

Values are given as mean (± standard deviation) or as median [IQR, 25th to 75th] for non-normally distributed variables (*).

AHRF, Acute Hypoxemic Respiratory Failure; ARDS, Acute Respiratory Distress Syndrome; ICU, Intensive Care Unit; NIV, Non-Invasive Ventilation; SAPS II, Simplified Acute Physiology Score II.

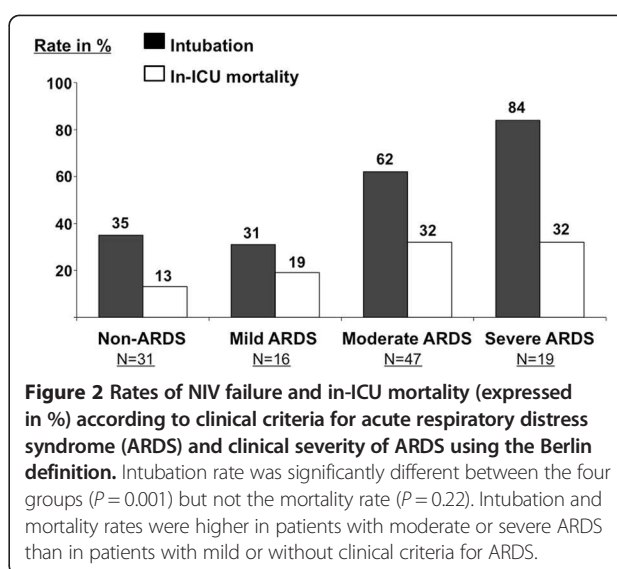


Figure 2 Rates of NIV failure and in-ICU mortality (expressed in %) according to clinical criteria for acute respiratory distress syndrome (ARDS) and clinical severity of ARDS using the Berlin definition. Intubation rate was significantly different between the four groups ($P = 0.001$) but not the mortality rate ($P = 0.22$). Intubation and mortality rates were higher in patients with moderate or severe ARDS than in patients with mild or without clinical criteria for ARDS.

those with no ARDS or with mild ARDS (16/47, 34%); (OR = 4.15, 95% CI: 1.78 to 9.70; $P = 0.0004$) Survival analysis showed that intubation rates differed markedly ($P < 0.00001$, Log-rank test) between patients with no or mild ARDS and those with moderate or severe ARDS (Figure 3).

Overall in-ICU mortality rate was 25% (28/113), and tended to be higher in patients with ARDS (24/82, 29%) than others (4/31, 13%, $P = 0.07$) (Figure 2). The mortality rate of patients with moderate or severe ARDS was also twice as high (21/66; 32%) as those with no or mild ARDS (7/47; 15%) (OR = 2.7; 95% CI: 1.003 to 7.09; $P = 0.041$).

Among intubated patients, the overall in-ICU mortality rate was 46% (28/61). Thirty-three patients (54%)

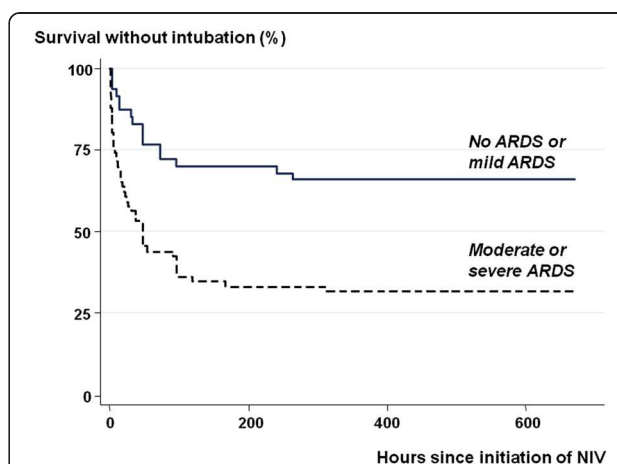


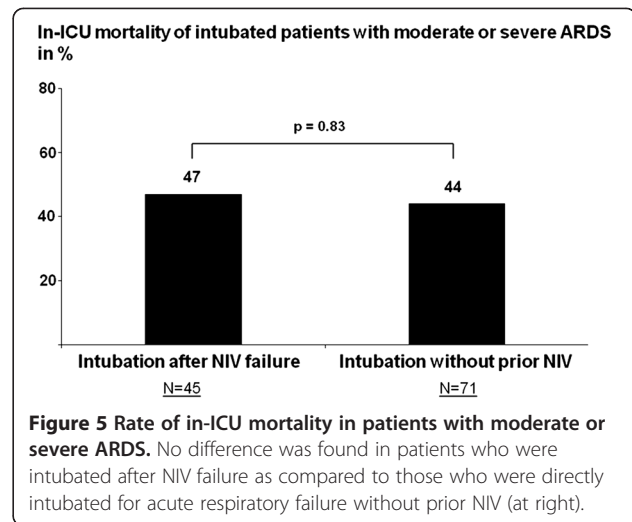
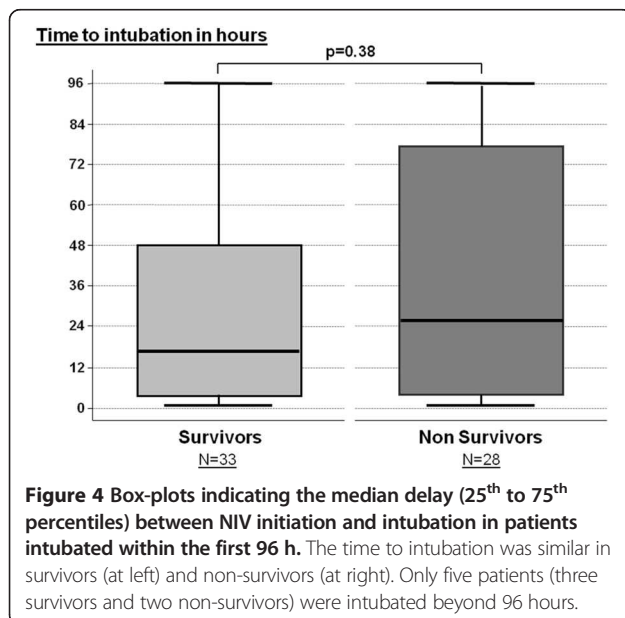
Figure 3 Kaplan-Meier estimate of survival without intubation according to presence of ARDS and its severity at presentation, stratified as no ARDS or mild ARDS (solid line) or moderate or severe ARDS (dashed line). The difference between the two groups was highly significant ($P < 0.0001$, log-rank test). (ARDS, acute respiratory distress syndrome).

were intubated within the first 24 hours while the 28 patients remaining (46%) were intubated beyond 24 hours. The delay between NIV initiation and intubation had no influence on outcome with a similar time to intubation in survivors and non-survivors (Figure 4). Among patients with moderate or severe ARDS, in-ICU mortality was similar in patients who were intubated after failure of NIV as compared to patients who were directly intubated without prior NIV (Figure 5).

Factors associated with NIV failure

Prospective data from NIV monitoring forms were available for 81% (91/113) of patients. Patients who were not intubated received NIV during a longer duration than those who were intubated (3.3 ± 2.8 days versus 2.0 ± 2.0 days, $P = 0.006$). Patients who failed NIV had lower PEEP levels and poorer tolerance to NIV than patients who succeeded NIV. Patients who failed NIV had more often active cancer, shock on admission and moderate/severe ARDS. They also had a higher SAPS II score, a lower Glasgow coma score, and a lower $\text{PaO}_2/\text{FiO}_2$ ratio (Table 2). Among patients with moderate ARDS, those with a $\text{PaO}_2/\text{FiO}_2$ ratio <150 were at significantly higher risk of intubation: 20/27 (74%) vs. 9/20 (45%); HR = 2.3 (95% CI, 1.04 to 5.06); $P = 0.04$. The rate of microbiological documentation was similar in patients who succeeded NIV as compared to those who failed NIV: 44% (23/52) in the success group versus 49% (30/61) in the failure group ($P = 0.70$).

Cox regression analysis showed that the risk of intubation was significantly associated with active cancer, a lower Glasgow coma score, shock, moderate/severe ARDS and a lower PEEP level (Table 2).



Discussion

In our study, the intubation rate was higher in ARDS patients (61%) than in non-ARDS patients (35%). However, the 31% intubation rate in mild ARDS was close to that of non-ARDS, whereas it significantly increased up to 62% in moderate ARDS and to 84% in severe ARDS. After adjustment, underlying active cancer, moderate or severe ARDS, shock, lower Glasgow Coma Score (GCS) and lower PEEP level at NIV initiation were predictors of intubation. After NIV initiation, the time to intubation in patients who failed NIV did not influence outcome.

NIV failure rate in patients with acute hypoxemic respiratory failure

In patients receiving NIV for AHRF, we found an overall rate of intubation of 54%, which is substantially higher than the 25 to 35% rate reported in randomized controlled trials evaluating NIV in AHRF [17,18]. However, in these two studies nearly 20 to 30% of the patients received NIV for cardiogenic pulmonary edema. Moreover, patients enrolled in such randomized studies are selected and, consistent with our results, intubation rates up to 60% have been reported in a series of unselected patients with AHRF of non-cardiac origin [6-8].

In their analysis of 147 ARDS patients receiving NIV as first-line therapy, Antonelli *et al.* [9] reported an intubation rate of only 46%. In this study, a high SAPS 2 (> 34) and low $\text{PaO}_2/\text{FiO}_2$ ratio (≤ 175 mmHg) after NIV initiation were the two risk factors of NIV failure, with an intubation rate of 78% (25/32) when both risk factors were present [9]. Although our overall intubation rate was higher, the intubation rate of patients presenting with the combination of these two criteria was strictly similar (79%, 27/34) and their mortality rate was likewise similar. However, using the SAPS 2 is clinically impractical since this score is computed only after 24 hours of admission,

Table 2 Predictors of endotracheal intubation in patients receiving NIV for non-hypercapnic AHRF

| | NIV Success N = 52 | NIV Failure N = 61 | Univariate HR [95% CI]; P-value | Cox regression aHR [95% CI]; P-value |
|---|--------------------|--------------------|--|---|
| Age, years | 58.0 (± 17.1) | 62.6 (± 14.4) | 1.47 [0.99 to 1.02]; P = 0.142 | - |
| Male sex, n (%) | 36 (69%) | 39 (64%) | 0.85 [0.51 to 1.44]; P = 0.551 | - |
| SAPS II | 31.4 (± 10.9) | 46.3 (± 18.2) | 1.05 [1.03 to 1.06] ; P < 0.001 | Not included |
| Immunosuppression/cancer, n (%) | 20 (38%) | 30 (49%) | 1.30 [0.79 to 2.16]; P = 0.169 | - |
| Cancer, n (%) | 0 (0%) | 8 (13%) | 4.36 [2.01 to 9.44] ; P < 0.001 | 2.74 [1.22 to 6.15] ; P = 0.014 |
| At Admission before VNI | | | | |
| Sepsis, n (%) | 37 (71%) | 43 (70%) | 0.97 [0.56 to 1.68]; P = 0.913 | - |
| Glasgow coma score | 14.9 (± 0.5) | 14.6 (± 1.2) | 0.84 [0.69 to 1.03] ; P = 0.098 | 0.77 [0.63 to 0.96] ; P = 0.018 |
| Respiratory Rate, breaths/minute | 32.7 (± 7.0) | 33.3 (± 6.6) | 1.01 [0.97 to 1.05]; P = 0.517 | - |
| pH | 7.44 (± 0.06) | 7.44 (± 0.08) | 2.16 [0.05 to 89.3]; P = 0.685 | - |
| PaO ₂ , mm Hg | 78.7 (± 43.0) | 84.1 (± 53.2) | 1.00 [0.99 to 1.01]; P = 0.442 | - |
| PaCO ₂ , mm Hg | 34.8 (± 5.6) | 35.3 (± 6.0) | 1.01 [0.97 to 1.06]; P = 0.669 | - |
| Bicarbonates, mmol/L | 24.4 (± 4.8) | 25.5 (± 5.0) | 1.01 [0.96 to 1.06]; P = 0.547 | - |
| Lactates, mmol/L | 2.0 (± 1.8) | 1.9 (± 1.2) | 1.00 [0.85 to 1.18]; P = 0.940 | - |
| Heart rate, beats/minute | 114 (± 27) | 110 (± 25) | 0.99 [0.98 to 1.01]; P = 0.467 | - |
| Shock, n (%) | 4 (8%) | 14 (23%) | 2.08 [1.14 to 3.79] ; P = 0.017 | 1.89 [1.01 to 3.53] ; P = 0.047 |
| Systolic arterial pressure, mmHg | 134 (± 27) | 124 (± 24) | 0.99 [0.98 to 1.00] ; P = 0.055 | Not included |
| At NIV initiation | | | | |
| Altered consciousness, n (%) | 3 (6%) | 8 (13%) | 1.71 [0.81 to 3.59]; P = 0.158 | - |
| pH | 7.43 (± 0.06) | 7.41 (± 0.10) | 0.12 [0.00 to 4.31]; P = 0.244 | - |
| PCO ₂ , mm Hg | 36.6 (± 6.7) | 37.5 (± 7.5) | 1.02 [0.98 to 1.05]; P = 0.327 | - |
| PaO ₂ /FiO ₂ , mm Hg | 211 (± 86) | 163 (± 92) | 0.99 [0.99 to 0.99] ; P = 0.003 | Not included |
| Moderate or severe ARDS, n (%) | 21 (40%) | 45 (74%) | 2.79 [1.57 to 4.95] ; P < 0.001 | 2.57 [1.33 to 4.75] ; P = 0.003 |
| PaO ₂ /FiO ₂ < 150 mm Hg, n (%) | 12 (23%) | 37 (61%) | 2.97 [1.77 to 4.99] ; P < 0.001 | Not included |
| PEEP level, cm H ₂ O | 4.8 (± 1.0) | 4.4 (± 1.3) | 0.77 [0.62 to 0.94] ; P = 0.011 | 0.71 [0.57 to 0.88] ; P = 0.002 |
| PS level, cm H ₂ O | 8.1 (± 2.2) | 8.0 (± 1.9) | 0.98 [0.86 to 1.13]; P = 0.915 | - |
| Tidal volume, ml | 576 (± 144) | 619 (± 196) | 1.00 [0.99 to 1.00]; P = 0.157 | - |
| Respiratory rate, breaths/minute | 32.7 (± 12.9) | 33.9 (± 9.0) | 1.01 [0.98 to 1.03]; P = 0.601 | - |
| Important leaks, n (%) | 2/43 (5%) | 3/48 (6%) | 1.39 [0.43 to 4.48]; P = 0.720 | - |
| Poor tolerance, n (%) | 3/43 (7%) | 9/48 (19%) | 2.08 [1.00 to 4.30] ; P = 0.049 | 1.97 [0.89 to 4.30]; P = 0.09 |

Values are given as mean (± standard deviation) or proportion (%).

AHRF, Acute Hypoxemic Respiratory Failure; ARDS, Acute Respiratory Distress Syndrome; CI, 95% Confidence Interval HR; Hazard Ratio (aHR, adjusted HR); NIV, Non-Invasive Ventilation; PEEP, Positive End-Expiratory Pressure; PS, Pressure Support; SAPS II, Simplified Acute Physiology Score; VT, Tidal Volume.

therefore taking into account the potential complications of intubation in patients who failed NIV within the first 24 hours.

Time to intubation and impact on outcome

It has been suggested that NIV failure in patients with AHRF is independently associated with poor outcome as compared to patients intubated without prior NIV [6]. Therefore, it is essential to assess intubation rates and the impact of NIV failure on outcome in different subsets of the population with AHRF. It was recently suggested at an international conference that NIV may be a first line treatment in mild ARDS [21]. Our study

supports this contention, as the intubation rate in patients with mild ARDS did not differ from that recorded in non-ARDS patients. In our patients with moderate or severe ARDS, however, the intubation rate was much higher (68%). Nevertheless, the mortality rate of patients failing NIV did not differ according to the time to intubation, in contrast with previous studies of patients with community acquired pneumonia [22] or receiving NIV during the post-extubation period [23]. We were unable to identify a time beyond which maintaining NIV may worsen outcome, and we believe that intubation should be decided according to standard criteria regardless of NIV duration.

It could also be argued that in our study NIV was used in moderately ill patients, while more severe patients would have been intubated without prior NIV. However, the rate of severe ARDS (19/82, 23%) in our population is close to that reported in the recent Berlin definition [19]. Mortality rates observed in intubated patients with ARDS are usually higher in observational studies than in randomized controlled studies and can reach 45% in unselected cohorts of patients [24,25]. Thus, our mortality rate of 48% in ARDS patients who failed NIV and required intubation is in line with these cohort studies of intubated patients.

Predictive factors for NIV failure

As previously reported [6], immunosuppression had no influence on the success or failure of NIV; however, all eight patients in the subgroup having active or metastatic cancer failed NIV, and this factor remained significantly associated with NIV failure after adjustment (Table 2); thus, using NIV in this subgroup should be carefully considered. Not surprisingly, a low GCS and, to a lesser extent, shock were associated with NIV failure. Although neither controlled studies [17,18] nor surveys [5,7] found that the occurrence of shock was a risk factor of intubation, two others studies found that shock was associated with NIV failure [8,22].

Several studies found that hypoxemia was independently associated with NIV failure [7-9,22]. Our results confirm that stratification of patients according to the clinical severity of ARDS using the recent Berlin definition was clearly associated with the risk of NIV failure, with a low risk in patients with mild ARDS, increasing to 84% in those who had a $\text{PaO}_2/\text{FiO}_2 \leq 100$ mmHg at initiation of NIV. However, a cut-off of 150 mmHg (a value close to that reported by Antonelli *et al.* [9]) appeared to more accurately segregate patients who failed from those who succeeded NIV. Therefore, whereas almost all patients with severe ARDS are likely to fail NIV, some patients with “moderate” ARDS might still benefit from a NIV trial.

Limitations

Our study was conducted in a single unit with a long-standing experience in the practice of NIV and, therefore, our results may not be applicable to other centers with less extensive experience. Experience and nurse-driven protocols may improve NIV tolerance, and we report a poor tolerance rate of only 13% after one hour of NIV. In line with previous studies [5], poor tolerance was associated with NIV failure in univariate analysis but not after adjustment for other variables associated with NIV failure. However, whereas rate of NIV failure could be significantly reduced for hypercapnic patients in experienced centers [26], our rate of intubation was not lower in this series than in surveys including less

experienced centers [5,7]. Another limitation is the retrospective nature of the study. However, prospective data collection of ventilatory parameters under NIV was available for a vast majority of our patients and, because of the availability of computerized medical charts for all patients, all those receiving NIV for AHRF could be analyzed.

Conclusion

The major implications of our results are to easily identify hypoxemic patients who may benefit from NIV. Intubation rates did not exceed 35% in non-ARDS and mild ARDS and NIV may thus be used as the first-line ventilatory support, as recently suggested [21]. By contrast, 84% of severe ARDS required intubation and NIV does not appear beneficial in this subset of patients; however, the time to intubation after NIV failure did not seem to influence outcome of patients. In patients with moderate ARDS, NIV may be worth attempting in those having a $\text{PaO}_2/\text{FiO}_2$ ratio >150 in the absence of hemodynamic instability or altered consciousness; further studies are needed to define the most appropriate use of NIV in these patients.

Key messages

- Intubation rates significantly differed between ARDS and non-ARDS patients and according to clinical severity of ARDS: 31% in mild, 62% in moderate and 84% in severe ARDS.
- NIV may be used as the first-line ventilatory support in mild ARDS whereas it does not appear beneficial in severe ARDS.
- In patients with moderate ARDS, NIV may be worth attempting in those having a $\text{PaO}_2/\text{FiO}_2$ ratio >150 .
- The time to intubation after NIV failure did not seem to influence outcome of patients.
- Active cancer, shock, moderate/severe ARDS, lower Glasgow coma score and lower positive end-expiratory pressure level at NIV initiation were predictors of NIV failure.

Abbreviations

AHRF: Acute Hypoxemic Respiratory Failure; ARDS: Acute Respiratory Distress Syndrome; GCS: Glasgow Coma Scale; ICU: Intensive Care Unit; NIV: Non-Invasive Ventilation; PEEP: Positive End-Expiratory Pressure; RASS: Richmond Agitation-Sedation Scale; SAPS: Sequential Organ Failure Assessment.

Competing interests

The authors declare that they have no competing interests.

Authors' contributions

AWT, CBB and DC were responsible for study concept and design. DC, CF, ACI and FB were responsible for acquisition of the data. AWT, DC, CF, ACI, FB and CBB were responsible for the analysis and interpretation of the data. AWT and CBB drafted the manuscript. AWT, DC, CF, ACI, FB and CBB were responsible for critical revision of the manuscript for important intellectual

content. CBB and AWT performed the statistical analysis. CBB and AWT supervised the study. All authors read and approved the final manuscript.

Acknowledgments

Some of the results of this study have been previously reported in the form of an abstract at the 2013 meeting of the American Thoracic Society in Philadelphia, PA, USA.

Author details

¹Medical Intensive Care Unit, AP-HP, Henri Mondor University Hospital, Créteil, France. ²Réanimation Médicale, CHU de Poitiers, 2 rue de la Milétrie, 86021, Poitiers, France. ³INSERM U955, Créteil, France.

Received: 19 July 2013 Accepted: 24 October 2013

Published: 11 November 2013

References

- Brochard L, Mancebo J, Wysocki M, Lofaso F, Conti G, Rauss A, Simonneau G, Benito S, Gasparetto A, Lemaire F, *et al*: **Noninvasive ventilation for acute exacerbations of chronic obstructive pulmonary disease.** *N Engl J Med* 1995, **333**:817–822.
- Lightowler JV, Wedzicha JA, Elliott MW, Ram FS: **Non-invasive positive pressure ventilation to treat respiratory failure resulting from exacerbations of chronic obstructive pulmonary disease: Cochrane systematic review and meta-analysis.** *BMJ* 2003, **326**:185.
- Keenan SP, Sinuff T, Cook DJ, Hill NS: **Which patients with acute exacerbation of chronic obstructive pulmonary disease benefit from noninvasive positive-pressure ventilation? A systematic review of the literature.** *Ann Intern Med* 2003, **138**:861–870.
- Masip J, Roque M, Sanchez B, Fernandez R, Subirana M, Exposito JA: **Noninvasive ventilation in acute cardiogenic pulmonary edema: systematic review and meta-analysis.** *JAMA* 2005, **294**:3124–3130.
- Demoule A, Girou E, Richard JC, Taille S, Brochard L: **Increased use of noninvasive ventilation in French intensive care units.** *Intensive Care Med* 2006, **32**:1747–1755.
- Demoule A, Girou E, Richard JC, Taille S, Brochard L: **Benefits and risks of success or failure of noninvasive ventilation.** *Intensive Care Med* 2006, **32**:1756–1765.
- Schettino G, Altobelli N, Kacmarek RM: **Noninvasive positive-pressure ventilation in acute respiratory failure outside clinical trials: experience at the Massachusetts General Hospital.** *Crit Care Med* 2008, **36**:441–447.
- Rana S, Jenad H, Gay PC, Buck CF, Hubmayr RD, Gajic O: **Failure of non-invasive ventilation in patients with acute lung injury: observational cohort study.** *Crit Care* 2006, **10**:R79.
- Antonelli M, Conti G, Esquinas A, Montini L, Maggiore SM, Bello G, Rocco M, Maviglia R, Pennisi MA, Gonzalez-Diaz G, Meduri GU: **A multiple-center survey on the use in clinical practice of noninvasive ventilation as a first-line intervention for acute respiratory distress syndrome.** *Crit Care Med* 2007, **35**:18–25.
- Agarwal R, Aggarwal A, Gupta D: **Role of noninvasive ventilation in acute lung injury/acute respiratory distress syndrome: a proportion meta-analysis.** *Respir Care* 2010, **55**:1653–1660.
- Hilbert G, Gruson D, Vargas F, Valentino R, Gbikpi-Benissan G, Dupon M, Reiffers J, Cardinaud JP: **Noninvasive ventilation in immunosuppressed patients with pulmonary infiltrates, fever, and acute respiratory failure.** *N Engl J Med* 2001, **344**:481–487.
- Antonelli M, Conti G, Bui M, Costa MG, Lappa A, Rocco M, Gasparetto A, Meduri GU: **Noninvasive ventilation for treatment of acute respiratory failure in patients undergoing solid organ transplantation: a randomized trial.** *JAMA* 2000, **283**:235–241.
- Auriant I, Jallot A, Herve P, Cerrina J, Le Roy LF, Fournier JL, Lescot B, Parquin F: **Noninvasive ventilation reduces mortality in acute respiratory failure following lung resection.** *Am J Respir Crit Care Med* 2001, **164**:1231–1235.
- Squadrone V, Coxa M, Cerutti E, Schellino MM, Biolino P, Occella P, Belloni G, Vilianis G, Fiore G, Cavallo F, Ranieri VM, Piedmont Intensive Care Units Network (PICUN): **Continuous positive airway pressure for treatment of postoperative hypoxemia: a randomized controlled trial.** *JAMA* 2005, **293**:589–595.
- Confalonieri M, Potena A, Carbone G, Porta RD, Tolley EA, Umberto Meduri G: **Acute respiratory failure in patients with severe community-acquired pneumonia. A prospective randomized evaluation of noninvasive ventilation.** *Am J Respir Crit Care Med* 1999, **160**:1585–1591.
- Martin TJ, Hovis JD, Costantino JP, Bierman MI, Donahoe MP, Rogers RM, Kreit JW, Sciruba FC, Stiller RA, Sanders MH: **A randomized, prospective evaluation of noninvasive ventilation for acute respiratory failure.** *Am J Respir Crit Care Med* 2000, **161**:807–813.
- Delclaux C, L'Her E, Alberti C, Mancebo J, Abroug F, Conti G, Guerin C, Schortgen F, Lefort Y, Antonelli M, Lepage E, Lemaire F, Brochard L: **Treatment of acute hypoxemic nonhypercapnic respiratory insufficiency with continuous positive airway pressure delivered by a face mask: A randomized controlled trial.** *JAMA* 2000, **284**:2352–2360.
- Ferrer M, Esquinas A, Leon M, Gonzalez G, Alarcon A, Torres A: **Noninvasive ventilation in severe hypoxemic respiratory failure: a randomized clinical trial.** *Am J Respir Crit Care Med* 2003, **168**:1438–1444.
- The ARDS Definition Task Force: **Acute Respiratory Distress Syndrome: the Berlin Definition.** *JAMA* 2012, **307**:2526–2533.
- Ely EW, Truman B, Shintani A, Thomason JW, Wheeler AP, Gordon S, Francis J, Speroff T, Gautam S, Margolin R, Sessler CN, Dittus RS, Bernard GR: **Monitoring sedation status over time in ICU patients: reliability and validity of the Richmond Agitation-Sedation Scale (RASS).** *JAMA* 2003, **289**:2983–2991.
- Ferguson N, Fan E, Camporota L, Antonelli M, Anzueto A, Beale R, Brochard L, Brower R, Esteban A, Gattinoni L, Rhodes A, Slutsky AS, Vincent JL, Rubenfeld GD, Thompson BT, Ranieri VM: **The Berlin definition of ARDS: an expanded rationale, justification, and supplementary material.** *Intensive Care Med* 2012, **38**:1573–1582. Erratum in: *Intensive Care Med* 2012, **38**:1731–1732.
- Carrillo A, Gonzalez-Diaz G, Ferrer M, Martinez-Quintana ME, Lopez-Martinez A, Llamas N, Alcazar M, Torres A: **Non-invasive ventilation in community-acquired pneumonia and severe acute respiratory failure.** *Intensive Care Med* 2012, **38**:458–466.
- Esteban A, Frutos-Vivar F, Ferguson ND, Arabi Y, Apezteguia C, Gonzalez M, Epstein SK, Hill NS, Nava S, Soares MA, D'Empaire G, Alia I, Anzueto A: **Noninvasive positive-pressure ventilation for respiratory failure after extubation.** *N Engl J Med* 2004, **350**:2452–2460.
- Brun-Buisson C, Minelli C, Bertolini G, Brazzi L, Pimentel J, Lewandowski K, Bion J, Romand JA, Villar J, Thorsteinsson A, Damas P, Armaganidis A, Lemaire F, ALIVE Study Group: **Epidemiology and outcome of acute lung injury in European intensive care units. Results from the ALIVE study.** *Intensive Care Med* 2004, **30**:51–61.
- Phua J, Badia JR, Adhikari NK, Friedrich JO, Fowler RA, Singh JM, Scales DC, Stather DR, Li A, Jones A, Gattas DJ, Hallett D, Tomlinson G, Stewart TE, Ferguson ND: **Has mortality from acute respiratory distress syndrome decreased over time? A systematic review.** *Am J Respir Crit Care Med* 2009, **179**:220–227.
- Contou D, Fragnoli C, Cordoba-Izquierdo A, Boissier F, Brun-Buisson C, Thille AW: **Noninvasive ventilation for acute hypercapnic respiratory failure: intubation rate in an experienced unit.** *Respir Care* 2013, **58**:2045–2052.

doi:10.1186/cc13103

Cite this article as: Thille *et al*: Non-invasive ventilation for acute hypoxemic respiratory failure: intubation rate and risk factors. *Critical Care* 2013 **17**:R269.

Submit your next manuscript to BioMed Central and take full advantage of:

- Convenient online submission
- Thorough peer review
- No space constraints or color figure charges
- Immediate publication on acceptance
- Inclusion in PubMed, CAS, Scopus and Google Scholar
- Research which is freely available for redistribution

Submit your manuscript at
www.biomedcentral.com/submit

