

The combination of arsenic, interferon-alpha, and zidovudine restores an "immunocompetent-like" cytokine expression profile in patients with adult T-cell leukemia lymphoma.

Ghada Kchour, Sa Rezaee, Reza Farid, Akram Ghantous, Houshang Rafatpanah, Mahdi Tarhini, Mohamad-Mehdi Kooshyar, Hiba El Hajj, Fadwa Berry, Mohamad Mortada, et al.

► **To cite this version:**

Ghada Kchour, Sa Rezaee, Reza Farid, Akram Ghantous, Houshang Rafatpanah, et al.. The combination of arsenic, interferon-alpha, and zidovudine restores an "immunocompetent-like" cytokine expression profile in patients with adult T-cell leukemia lymphoma.. *Retrovirology*, BioMed Central, 2013, 10 (1), pp.91. <10.1186/1742-4690-10-91>. <inserm-00868737>

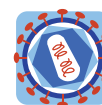
HAL Id: inserm-00868737

<http://www.hal.inserm.fr/inserm-00868737>

Submitted on 1 Oct 2013

HAL is a multi-disciplinary open access archive for the deposit and dissemination of scientific research documents, whether they are published or not. The documents may come from teaching and research institutions in France or abroad, or from public or private research centers.

L'archive ouverte pluridisciplinaire **HAL**, est destinée au dépôt et à la diffusion de documents scientifiques de niveau recherche, publiés ou non, émanant des établissements d'enseignement et de recherche français ou étrangers, des laboratoires publics ou privés.



RESEARCH

Open Access

The combination of arsenic, interferon-alpha, and zidovudine restores an “immunocompetent-like” cytokine expression profile in patients with adult T-cell leukemia lymphoma

Ghada Kchour¹, SA Rahim Rezaee², Reza Farid³, Akram Ghantous⁴, Houshang Rafatpanah³, Mahdi Tarhini⁵, Mohamad-Mehdi Kooshyar⁶, Hiba El Hajj⁷, Fadwa Berry¹, Mohamad Mortada¹, Roudaina Nasser⁷, Abbas Shirdel⁶, Zeina Dassouki⁷, Mohamad Ezzedine¹, Hossein Rahimi⁶, Ardeshir Ghavamzadeh⁸, Hugues de Thé⁹, Olivier Hermine¹⁰, Mahmoud Mahmoudi^{3*} and Ali Bazarbachi^{7*}

Abstract

Background: HTLV-I associated adult T-cell leukemia/lymphoma (ATL) carries a dismal prognosis due to chemo-resistance and immuno-compromised micro-environment. The combination of zidovudine and interferon-alpha (IFN) significantly improved survival in ATL. Promising results were reported by adding arsenic trioxide to zidovudine and IFN.

Results: Here we assessed Th1/Th2/T_{reg} cytokine gene expression profiles in 16 ATL patients before and 30 days after treatment with arsenic/IFN/zidovudine, in comparison with HTLV-I healthy carriers and sero-negative blood donors. ATL patients at diagnosis displayed a T_{reg}/Th2 cytokine profile with significantly elevated transcript levels of Foxp3, interleukin-10 (IL-10), and IL-4 and had a reduced Th1 profile evidenced by decreased transcript levels of interferon-γ (IFN-γ) and IL-2. Most patients (15/16) responded, with CD4⁺CD25⁺ cells significantly decreasing after therapy, paralleled by decreases in Foxp3 transcript. Importantly, arsenic/IFN/zidovudine therapy sharply diminished IL-10 transcript and serum levels concomitant with decrease in IL-4 and increases in IFN-γ and IL-2 mRNA, whether or not values were adjusted to the percentage of CD4⁺CD25⁺ cells. Finally, IL-10 transcript level negatively correlated with clinical response at Day 30.

Conclusions: The observed shift from a T_{reg}/Th2 phenotype before treatment toward a Th1 phenotype after treatment with arsenic/IFN/zidovudine may play an important role in restoring an immuno-competent micro-environment, which enhances the eradication of ATL cells and the prevention of opportunistic infections.

Keywords: Arsenic, Interferon, Zidovudine, HTLV-I, ATL, Cytokines, Immune deficiency

* Correspondence: MahmoudiM@mums.ac.ir; bazarbac@aub.edu.lb

³Immunology Research Centre Bu-Ali Research Institute, Mashhad University of Medical Sciences, Mashhad, Iran

⁷Department of Internal Medicine, American University of Beirut, Beirut, Lebanon

Full list of author information is available at the end of the article

Background

Adult T-cell leukemia/lymphoma (ATL) is an aggressive malignancy of mature activated T-cells caused by human T cell lymphotropic virus type I (HTLV-I) [1,2]. ATL carries a very bad prognosis because of intrinsic chemoresistance [3-6]. Moreover, ATL patients are functionally severely immunocompromised and may develop a variety of opportunistic infections, which further contribute to the poor prognosis [7-9]. These include cytomegalovirus, *Pneumocystis carinii* pneumonias, malignant stryngyloidosis, crusted (Norwegian) scabies, disseminated cryptococcosis, toxoplasmosis, or fungal infections, as well as bacterial infections particularly of the respiratory tract or of the lower urinary, and septicemias.

HTLV-1 primarily infects CD4⁺ T helper (Th) cells that play a central role in adaptive immune responses. These Th cells are the predominant viral reservoir in the peripheral blood [10] and are normally classified into four major lineages: Th1, Th2, Th17, and T regulatory (T_{reg}) cells, which produce interferon- γ (IFN- γ), interleukin-4 (IL-4), IL-17, and IL-10, respectively [11]. T_{reg} are a subset of CD4⁺CD25⁺ T cells characterized by the expression of the transcriptional regulator Foxp3 [12] and the secretion of high levels of IL-10. In healthy individuals, T_{reg} cells maintain immune homeostasis and protect against effector responses to autoantigens or over-exuberant responses to exogenous antigens [13]. Th1 effector cells produce IFN- γ and IL-2, play a critical role in cellular immunity against viral infections, and determine a greater inflammatory response. Th2 cells produce IL-4 and stimulate humoral or allergic responses. Under normal conditions, there is a Th1/Th2 cytokine balance that is disrupted when infectious agents induce an overproduction of the Th2 cytokines, leading to the inhibition of the adaptive immune response against the pathogen.

The immune-suppression in ATL patients is likely mediated by cytokines directly produced by the ATL cells or by ATL-triggered disruption of the normal cytokine balance produced by normal immune cells. Furthermore, ATL cells may directly function as T_{reg} cells and suppress normal effector T cells [14-17]. Overall, this immunosuppressive micro-environment enables ATL cells to evade the host immune response. Unfortunately, chemotherapy further exacerbate this phenomenon.

After 30 years of research on HTLV-I and associated diseases, treatment of ATL patients remains a challenge [3,6,18-20]. In acute ATL, Japanese trials demonstrated that although chemotherapy combinations improve response rate, they fail to achieve a significant impact on survival [21,22]. Patients with chronic and smoldering ATL have a better prognosis but long-term survival is poor when these patients are managed with a watchful-waiting policy or with chemotherapy [23]. Recently, a

worldwide meta-analysis revealed that the combination of zidovudine and interferon-alpha (IFN) is highly effective in the leukemic subtypes of ATL and should be considered as standard first line therapy in that setting [24]. This combination has changed the natural history of the disease through achievement of significantly improved long-term survival in patients with smoldering and chronic ATL as well as a subset of patients with acute ATL [24]. ATL lymphoma patients still benefit from chemotherapy induction with concurrent or sequential antiretroviral therapy with zidovudine and IFN. Yet, most patients relapse and alternative therapies are mandatory. In prior studies, using an *in vitro* model of ATL derived cell lines and freshly isolated ATL leukemic cells, we showed that arsenic trioxide synergizes with IFN to induce G1 arrest and apoptosis in ATL [25] through shut-off of the NF- κ B pathway and Tax degradation by the proteasome [26,27]. This combination yielded promising clinical results in relapsed/refractory ATL patients [28]. We recently showed that arsenic/IFN combination cures ATL mice through selective targeting of leukemia initiating cell (LIC) activity [29]. Finally, we reported an unprecedented 100% response rate including 70% complete remission rate in newly diagnosed chronic ATL patients treated with the combination of arsenic, interferon and zidovudine (arsenic/IFN/zidovudine) [30].

In the current study, we investigated the effect of the triple combination of arsenic/IFN/zidovudine on the immune micro-environment in ATL patients. We show that ATL patients at diagnosis displayed a T_{reg}/Th2 cytokine production profile. Strikingly, after therapy, the cytokine production balance shifted from this initial "immunosuppressive-like" state towards an "immunocompetent-like" state (Th1 profile). This study provides insights on the mechanism of action of this potentially curative combination on the immune micro-environment in ATL patients. This immunological switch may participate in the defense against opportunistic infections as well as in the anti-tumor immunity.

Results

Arsenic/IFN/zidovudine treatment induced a high response rate in ATL patients

Sixteen previously untreated ATL patients (2 acute ATL, 2 ATL lymphoma, and 12 chronic ATL) received arsenic/IFN/zidovudine treatment. The patients' characteristics are listed in Table 1. Clinical data, response to therapy and follow up data were previously reported for 10 of these patients [30]. Briefly, all patients initially presented with symptomatic disease requiring treatment. The most frequent symptoms were cutaneous manifestations with maculopapular rash, severe itching, and skin ulcerations. At day 30 and as previously reported [30], treatment with arsenic, IFN, and AZT resulted in a good albeit partial

Table 1 Patients characteristics

Patient age	Gender	ATL subtype	Response at day 30	Best response	Initial viral load (copy/ μ l)	Viral load at day 30 (copy/ μ l)
58	F	Acute	PR	PR	105483	219
56	M	Acute	PR	PR	NA	NA
60	M	Chronic	PR	CR	NA	NA
47	F	Chronic	VGPR	CR	1990	336
53	M	Chronic	PR	CR	84	33
72	M	Chronic	VGPR	CR	548	0
36	M	Chronic	VGPR	VGPR	999	838
46	F	Chronic	VGPR	CR	NA	NA
63	F	Chronic	PR	CR	1081	63
51	F	Chronic	PR	CR	196	64
68	F	Chronic	VGPR	VGPR	1805	65
60	M	Chronic	PR	CR	47	7
53	M	Chronic	PR	PR	49724	18898
77	M	Chronic	VGPR	CR	3747	182
54	M	Lymphoma	NR	NR	NA	NA
48	M	Lymphoma	PR	CR	NA	NA

CR= complete remission; PR= partial response; VGPR= very good partial response; NR= No response; NA= not available.

response in all patients except one ATL lymphoma: 9 patients achieved partial response (PR) and 6 patients achieved very good partial response (VGPR), as described in Patients and Methods. One ATL lymphoma died from disease progression (Table 1). Interestingly, as previously reported in seven patients [30], in the eleven patients for whom initial and Day 30 DNA was available, HTLV-I proviral load significantly decreased from an average of 1415 copy/ μ l of blood to 226 copy/ μ l ($p < 0.05$). Most patients continued to improve their response and the best response was achieved within 2 to 4 months. Indeed, out of the 15 responding patients, 10 patients achieved CR, 2 patients achieved VGPR (solely because of the presence of 6% and 8% of atypical lymphocytes on peripheral blood smear, respectively), and three patients achieved PR (Table 1).

We examined the effect of treatment on the relative distribution of the T cell subpopulations at day 30 (Table 2). Treatment with arsenic, AZT, and IFN decreased the average percentage of CD4⁺ cells (from $87 \pm 14\%$ to $77 \pm 21\%$; $p < 0.01$) and increased the average percentages of CD8⁺ cells (from $12 \pm 12\%$ to $16 \pm 12\%$; $p < 0.01$). In accordance with the observed response to therapy, a decrease in the average percentage of CD4⁺CD25⁺ cells was noted in all patients after treatment (from $47 \pm 15\%$ to $25 \pm 14\%$; $p < 0.001$), suggesting that this combination is mainly acting on the circulating malignant cells and HTLV-I infected cells (Table 2).

Arsenic/IFN/zidovudine treatment decreased transcript levels of Treg and Th2 markers

We investigated the early effect of the triple combination (arsenic/IFN/zidovudine) on the T_{reg} subpopulation by

evaluating the transcript levels of Foxp3 and IL-10 in 10 healthy sero-negative blood donors, 10 asymptomatic HTLV-I healthy carriers, as well as in 16 ATL patients before and 30 days after treatment, before achievement of maximal response.

Untreated ATL patients displayed significantly higher transcript levels of Foxp3 (Figure 1A) and IL-10 (Figure 2A), relative to seronegative or healthy carrier individuals ($p < 0.05$). Notably, Foxp3 and IL-10 mRNA levels in untreated ATL patients were, respectively, at least 12 and 53 folds higher than seronegative and healthy carrier individuals ($p < 0.05$). High interindividual variation was observed among ATL patients for both Foxp3 and IL-10 transcript levels (Figures 1A and 2A, Table 3). Interestingly, treatment with arsenic/IFN/zidovudine significantly decreased transcript levels of both Foxp3 (Figure 1B) and IL-10 (Figure 2B). Because ATL cells express a T_{reg} phenotype, we normalized the expression levels of Foxp3 and IL-10 relative to the percentage of CD4⁺ CD25⁺ cells. ATL patients still showed significantly higher normalized transcript levels of Foxp3 and IL-10 relative to seronegative individuals (Figures 1C and 2C; $p < 0.05$). Normalized mRNA values of IL-10 (Figure 2D), but not Foxp3 (Figure 1D), significantly decreased in ATL patients after treatment ($p < 0.05$). Interestingly, standardized IL-10 transcript level negatively correlates with clinical response at Day 30 ($r = -0.452$, $p < 0.05$, spearman). This correlation remained valid even when adjusted for the confounder effects of gender and/or age. This suggests that the lower the IL-10 levels before therapy, the better the response after 30 days of therapy.

Table 2 Flow cytometry analysis of T cell surface markers at initiation (Before) and 30 days after (After) treatment with arsenic/IFN/zidovudine, SD, standard deviation

Patient age	CD4+ cell/ μ l		% CD4+ cells		CD8+ cell/ μ l		% CD8+ cells		%CD4+/ CD25+ cells	
	Before	After	Before	After	Before	After	Before	After	Before	After
58	185710	90528	100	96	1857	1886	1	2	52	32
56	77040	2592	100	89	770	262	1	9	65	41
60	7020	3240	82	82	1320	1120	14	18	53	35
47	250	194	90	98	6318	3175	8	12	55	33
53	779	594	59	53	488	459	37	41	50	14
72	31142	4317	91	86	3080	703	9	14	44	25
36	5100	1584	93	90	5050	1095	7	10	48	42
46	4989	2072	85	67	3934	2360	15	33	58	22
63	4335	1061	80	42	765	523	20	28	41	7
51	1010	307	98	94	4269	1650	2	6	18	10
68	4989	1989	100	96	50	21	1	1	50	15
60	48370	15657	82	82	7980	2730	14	18	25	18
53	274	84	93	89	44984	13935	7	11	70	54
77	4469	1119	56	41	2873	764	36	28	52	25
54	1333	304	80	49	300	112	18	18	16	7
48	2160	2226	100	96	1	1	1	1	55	26
Mean			87	77			12	16	47	25
SD			14	22			12	12	15	14
P value			<0.01				<0.01		<0.001	

P values indicate the significance level for the pairwise comparisons between "Before" and "after".

In order to confirm the decrease of IL-10 in treated patients, we assessed the secretion of this cytokine in the serum of patients by ELISA before and 30 days after treatment. Seven patients had significantly higher IL-10 serum levels relative to seronegative and healthy carrier individuals (Figure 2E; $p < 0.001$) and all displayed decreases in IL-10 serum levels after treatment (Figure 2F; $p < 0.01$). Interestingly, these seven patients are those who displayed the highest IL-10 mRNA expression before treatment (Figure 2A). IL-10 serum levels were low before and after treatment in the remaining patients (data not shown). These results suggest that treatment with arsenic/IFN/zidovudine decreases the proportion of ATL cells with T_{reg} phenotype as well as their IL-10 production.

We then assessed the effect of treatment on the Th2 subpopulation by evaluating the transcript levels of IL-4. ATL patients had significantly higher levels of IL-4 mRNA (Figure 3A; $p < 0.05$), but not of normalized IL-4 transcripts (Figure 3C), compared to healthy carriers and seronegative blood donors. Treatment with arsenic/IFN/zidovudine significantly decreased IL-4 and normalized IL-4 expression (Table 3 and Figure 3B and 3D; $p < 0.05$). Interestingly, the decrease in IL-4 expression was more pronounced in the patients who had the highest pretreatment transcript levels (Table 3 and Figure 3B and D).

Treatment with arsenic/IFN/zidovudine increased transcript levels of Th1 markers

We finally investigated the effect of arsenic/IFN/zidovudine treatment on the Th1 subpopulation by evaluating the transcript levels of IFN- γ and IL-2. ATL patients exhibited significantly lower mRNA levels of IFN- γ (Figure 4A) and normalized IFN- γ (Figure 4C), relative to seronegative or healthy carrier individuals ($p < 0.05$). Similarly, IL-2 (Figure 5A) and normalized IL-2 (Figure 5C) mRNA levels were lower in ATL patients, compared to seronegative individuals, with only normalized values being statistically significant ($p < 0.001$). Interestingly, treatment with arsenic/IFN/zidovudine significantly increased the expression and normalized transcript levels of IFN- γ (Table 3 and Figure 4B and D; $p < 0.001$) and IL-2 (Table 3 and Figure 5B and D; $p < 0.01$).

Discussion

In this study, we report an early shift of the cytokine gene expression profile from a T_{reg} and Th2 phenotypes towards a Th1 phenotype in ATL patients after treatment with the combination of arsenic/IFN/zidovudine. We first confirmed the previously reported high transcript levels of Foxp3, IL-10 [12,31,32], and, to lesser extent, IL-4, and low transcript levels of IFN- γ and IL-2, in untreated ATL patients as compared to HTLV-I healthy carriers and HTLV-I negative blood donors.

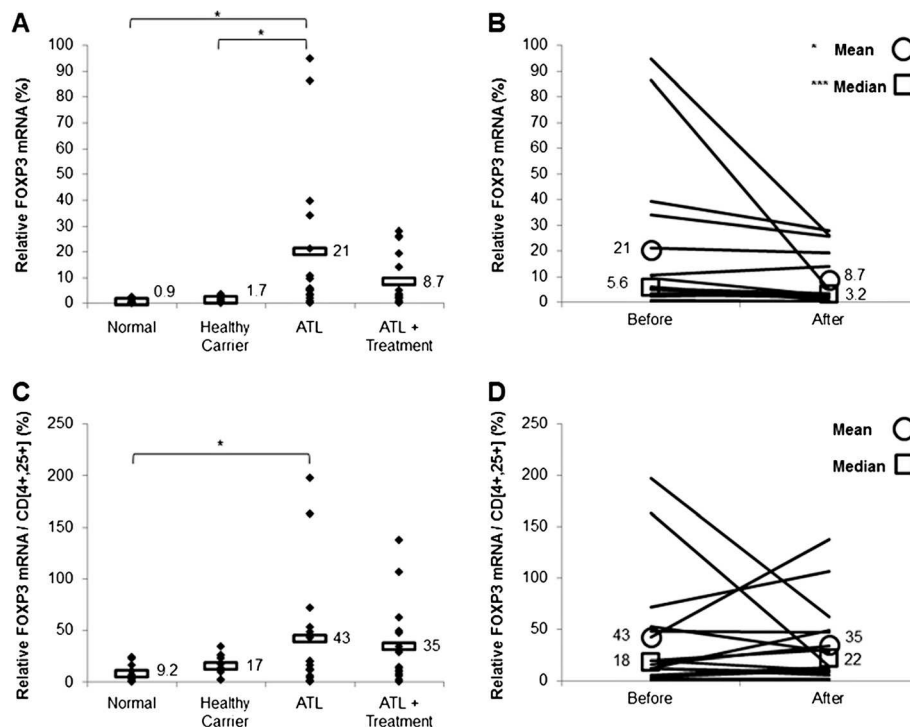


Figure 1 Treatment with arsenic/IFN/zidovudine decreased Foxp3 expression. **A.** Foxp3 transcript levels in normal blood donors (n=10), healthy carriers of HTLV-I (n=10) and ATL patients (n=16) at initiation and 30 days after treatment with arsenic/IFN/zidovudine. Rectangles represent mean values. **B.** Mean and median Foxp3 transcript levels of individual ATL patients at initiation and 30 days after treatment with arsenic/IFN/zidovudine. **C, D.** Relative expression of Foxp3 transcripts after normalization to the number of CD4⁺CD25⁺ ATL cells. All values are expressed as percentage of human beta2-microglobulin used as internal control. *, **, *** indicate p values less than 0.05, 0.01 and 0.001 respectively.

Hence, untreated ATL patients display an immunocompromised micro-environment characterized by a disruption of the normal cytokine balance, which is skewed toward T_{reg} and Th2 responses. This micro-environment helps ATL cells to evade the immune surveillance and likely explains the frequent opportunistic infections encountered in ATL patients.

The mechanisms of this disruption of the immune system in ATL patients have been extensively investigated. Previous reports indicated that ATL cells functionally and phenotypically resemble T_{reg} cells [13-17]. Indeed, two thirds of ATL cases harbor leukemic cells expressing Foxp3 [33-35]. Furthermore, most ATL cells express T_{reg} markers (CD4, CD25, and Foxp3) suggesting that ATL originates in natural T_{reg} cells infected with HTLV-1 [15,31]. These T_{reg}-like ATL cells do not produce IFN- γ [31,36] contrary to the HTLV-I infected CD4⁺CD25⁺ cells in the neuro-inflammatory HTLV-I Associated Myelopathy/Tropical Spastic Paraparesis (HAM/TSP), which display a non-T_{reg} phenotype with decreased expression of Foxp3 and increased levels of IFN- γ [37-41]. Moreover, ATL patients display elevated IL-10 transcript levels contrary to normal T cells [42] and high IL-10 serum level is an unfavorable prognostic factor among

ATL patients [31] as well as in HTLV-I negative Hodgkin and non-Hodgkin lymphomas and chronic lymphocytic leukemia [43]. Interestingly, in our study IL-10 transcript level negatively correlates with response at Day 30 ($r = -0.452$, $P < 0.05$, spearman), whereas no significant correlations were observed between the standardized expression levels of the other cytokines and response at Day 30 ($P > 0.05$, spearman). Hence, IL-10 transcript level can be used as biomarker to predict response to arsenic/IFN/zidovudine. Finally, in ATL, IL-10 has strong immunosuppressive effects since it inhibits the proliferation of normal T cells and the expression of Th1 associated cytokines IFN- γ and IL-2 [44,45]. Thus, excessive production of IL-10 by ATL cells may impair the host's immune system resulting in an immunosuppressive state.

Several studies have demonstrated the role of Th1 cytokines in the control of tumor growth and HTLV-I expression. IL-2 withdrawal was found to induce HTLV-I expression in ATL cell lines [46]. Also, deficiency in IFN- γ resulted in an enhanced tumorigenesis in HTLV-I *tax* transgenic mice [47]. On the other hand, adenovirus-mediated IFN- γ transfer inhibited the growth of transplanted HTLV-I Tax tumors in mice [48]. IFN- γ is

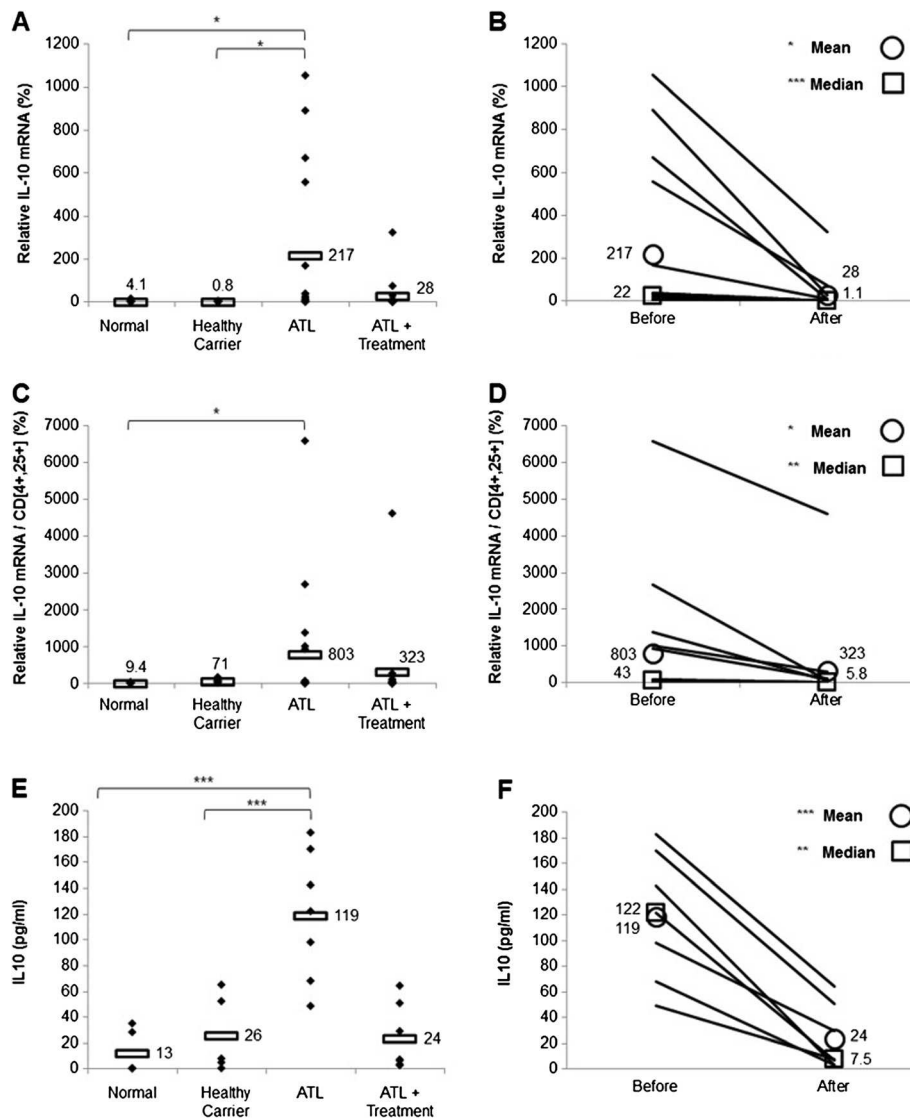


Figure 2 Treatment with arsenic/IFN/zidovudine decreased IL-10 expression and serum levels. **A.** IL-10 transcript levels in normal blood donors (n=10), healthy carriers of HTLV-I (n=10) and ATL patients (n=16) at initiation and 30 days after treatment with arsenic/IFN/zidovudine. Rectangles represent mean values. **B.** Mean and median IL-10 transcript levels of individual ATL patients at initiation and 30 days after treatment with arsenic/IFN/zidovudine. **C, D.** Relative expression of IL-10 transcripts after normalization to the number of CD4⁺CD25⁺ ATL cells. All values are expressed as percentage of human beta2-microglobulin used as internal control. **E, F.** Levels of secreted IL-10 in the serum of the seven ATL patients who displayed elevated pretreatment IL-10 serum level, measured by ELISA before and after treatment. *, **, *** indicate p values less than 0.05, 0.01 and 0.001 respectively.

produced by the host Th1 cells or natural killer cells as an immune response to HTLV-I infection [11]. ATL cells are unresponsive *in vitro* to TCR stimulation and suppress the proliferation of stimulated T cells [15]. Yano et al. showed that leukemia cells from some ATL patients suppress the proliferation of autologous CD4⁺ non ATL cells, secrete small amounts of IFN- γ , and suppress IFN- γ production by autologous CD4⁺ non-ATL cells [49].

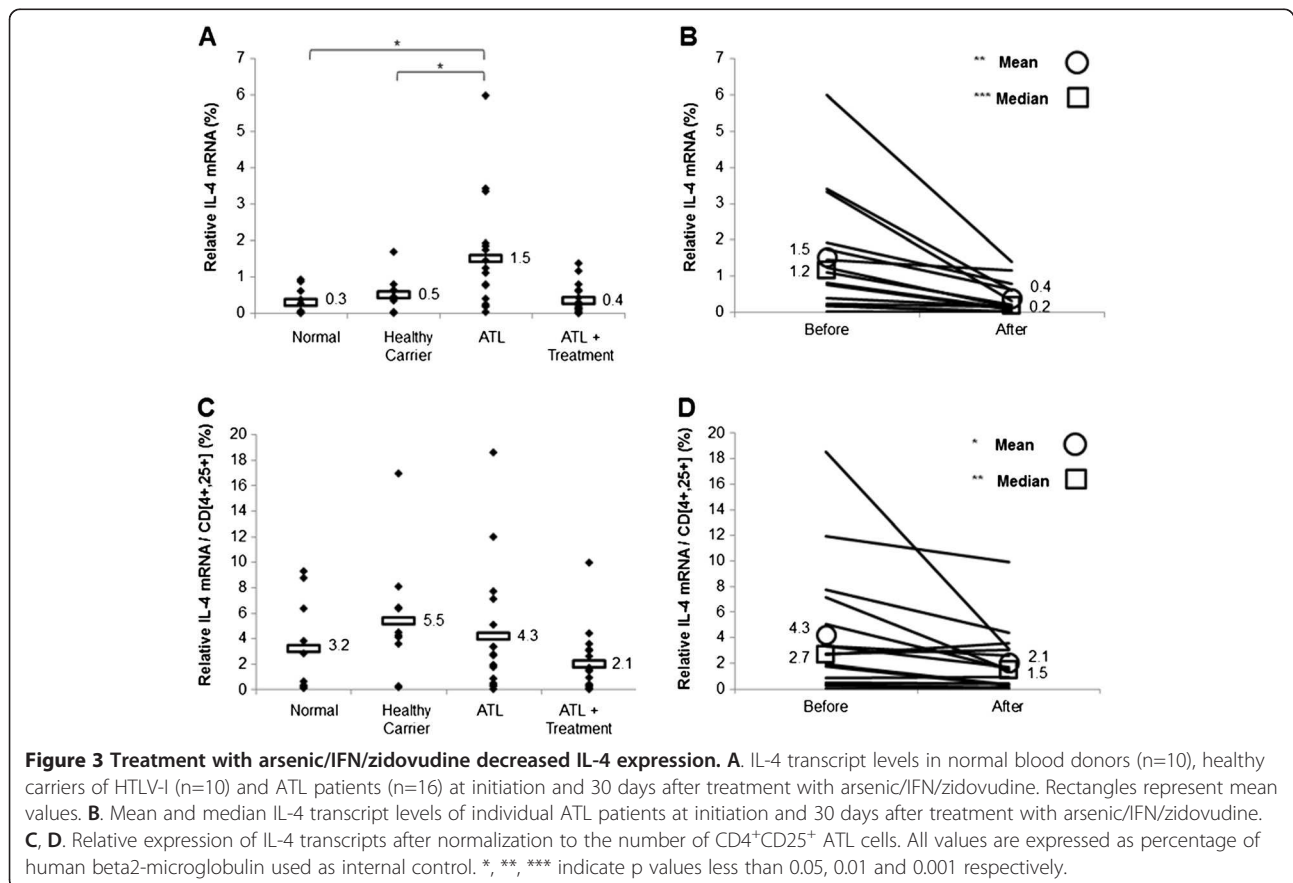
Importantly, as early as one month after treatment with arsenic/IFN/zidovudine, and before achievement of maximal clinical response, we observed significant

decreases in Foxp3, IL-10, and IL-4 transcripts and significant increases in IL-2 and IFN- γ expression. The decrease of Foxp3 mRNA correlated with the decreased percentage of CD4⁺CD25⁺ ATL cells. However, significant decreases in IL-10, and, to a lesser extent, IL-4 transcript levels were observed even after adjustment to the number of CD4⁺CD25⁺ leukemic cells. Previous reports have shown that IL-10 and IL-4 are directly produced by ATL cells under the control of Tax-induced NF- κ B and Tax activation [50,51]. Hence, decreased IL-10 and IL-4 transcripts in treated ATL patients is likely

Table 3 Foxp3 and cytokine transcript levels at initiation (Before) and 30 days after (After) treatment with arsenic/IFN/zidovudine

Patient age	Foxp3 before	Foxp3 after	IL-10 before	IL-10 after	IL-4 before	IL-4 after	INF-γ before	INF-γ after	IL-2 before	IL-2 after
58	0	0	0	0	0	0	13	80	7	34
56	16	34	1372	66	2	0	4	28	9	22
60	163	15	70	6	0	0	4	16	1	6
47	4	11	69	4	3	4	5.9	18	17	64
53	43	138	34	4	12	10	11.8	124	8	67
72	12	8	0	0	2	0	0.3	16	0	0
36	197	62	2	0	7	1	4.3	17	3	32
46	6	13	2	3	0	0	0.8	8	3	43
63	12	50	14	11	3	3	7	57	1	12
51	53	28	927	112	19	3	5	22	1	3
68	12	6	23	6	1	1	6	62	1	4
60	20	11	2684	60	8	4	3	155	1	4
53	48	47	0	0	0	0	2	7	0	0
77	2	2	52	6	3	3	13	45	1	4
54	20	30	6584	4602	5	1	5	114	0	2
48	72	107	1011	286	3	2	6	25	10	45

All values are expressed as percentage of human beta2-microglobulin used as internal control.



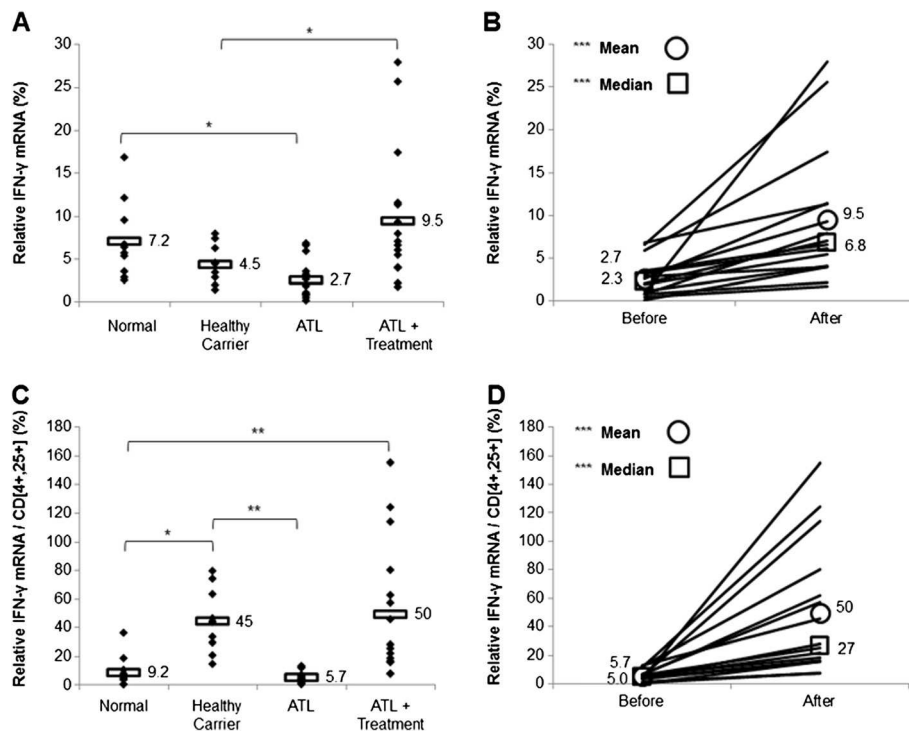


Figure 4 Treatment with arsenic/IFN/zidovudine increased IFN- γ expression. **A.** IFN- γ transcript levels in normal blood donors (n=10), healthy carriers of HTLV-I (n=10) and ATL patients (n=16) at initiation and 30 days after treatment with arsenic/IFN/zidovudine. Rectangles represent mean values. **B.** Mean and median IFN- γ transcript levels of individual ATL patients at initiation and 30 days after treatment with arsenic/IFN/zidovudine. **C, D.** Relative expression of IFN- γ transcripts after normalization to the number of CD4⁺CD25⁺ ATL cells. All values are expressed as percentage of human beta2-microglobulin used as internal control. *, **, *** indicate p values less than 0.05, 0.01 and 0.001 respectively.

secondary to arsenic/IFN induced Tax degradation and reversal of NF- κ B activation [26,27,29]. Decreased IL-10 expression may alleviate the pre-existing inhibitory effect on Th1 associated cytokines, IFN- γ and IL-2 [44,45], likely explaining the observed increase in their transcript levels after treatment.

This report has several limitations. First, we have only studied the effect of the triple combination of arsenic, IFN and zidovudine, and therefore the individual contribution of each drug alone cannot be assessed. Second, in the absence of functional immune studies, we have only assessed cytokine expression profile which represents an indirect demonstration of the treatment effect on the immune micro-environment. Finally, there is no direct evidence of the mechanism of action and whether the shift of the cytokine expression profile is secondary to the downregulation of HTLV-I proteins (Tax and/or HBZ), inhibition of *de-novo* infection of T cells by HTLV-I, or an HTLV-I independent mechanism. Indeed, while these therapies are clinically quite effective, their mechanism of action remains controversial. Several reports suggested an antiviral effect of zidovudine and interferon without demonstrating it [52]. Preclinical models

demonstrated that the combination of arsenic trioxide and interferon eradicate human ATL cells and cures murine ATL derived from Tax transgenics through Tax degradation by the proteasome [29]. However, this has not been demonstrated in ATL patients. Finally, preliminary reports suggested an HTLV-I independent mechanism involving p53 and inhibition of telomerase activity [53].

Conclusions

In conclusion the shift of the cytokine expression profile from a T_{reg} and Th2 phenotype before treatment toward a Th1 phenotype one month after treatment with arsenic/IFN/zidovudine, and before maximal clinical response and ATL cell loss, may play an important role in restoring an immune response that can participate in the eradication of ATL cells and the prevention or control of opportunistic infections. Therefore, this potentially curative combination can target ATL cells through 1) Tax degradation and eradication of LIC activity (arsenic and IFN), 2) inhibition *de-novo* infection of T cells by HTLV-I (zidovudine and interferon), and 3) switch of the immune system towards an immuno-competent state (triple combination).

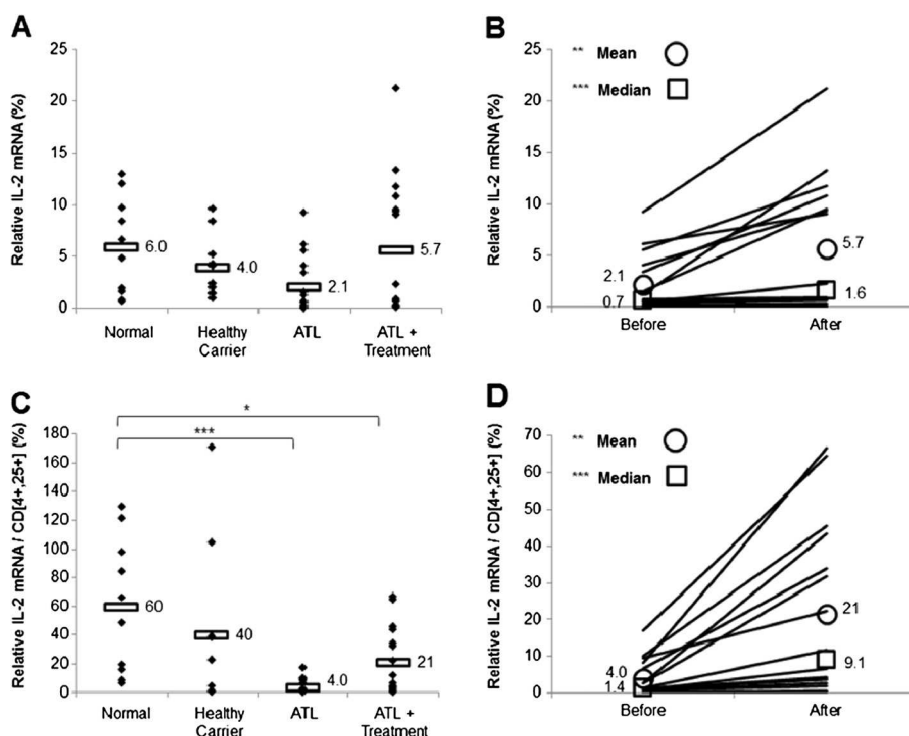


Figure 5 Treatment with arsenic/IFN/zidovudine increased IL-2 expression. **A.** IL-2 transcript levels in normal blood donors (n=10), healthy carriers of HTLV-I (n=10) and ATL patients (n=16) at initiation and 30 days after treatment with arsenic/IFN/zidovudine. Rectangles represent mean values. **B.** Mean and median IL-2 transcript levels of individual ATL patients at initiation and 30 days after treatment with arsenic/IFN/zidovudine. **C, D.** Relative expression of IL-2 transcripts after normalization to the number of CD4⁺CD25⁺ ATL cells. All values are expressed as percentage of human beta2-microglobulin used as internal control. *, **, *** indicate p values less than 0,05, 0,01 and 0,001 respectively.

Methods

Patients' description, study design and treatment schedule

This study included 16 ATL patients. They were referred between 2006 and 2009 to the Hematology-Oncology Department of Ghaem and Imam Reza hospitals, Mashhad University of Medical Sciences, Iran. All ATL patients had serologic evidence of HTLV-I infection by Enzyme-Linked Immunosorbent Assay (ELISA). Confirmation of HTLV-I positivity was done by standard Polymerase Chain Reaction (PCR) (Data not shown). According to the Shimoyama classification criteria for ATL [18], 12 patients had chronic ATL, 2 patients had acute ATL, while the 2 remaining patients had ATL lymphoma. The patient's characteristics are shown in Table 1. In addition to ATL patients, this study included 10 HTLV-I healthy carriers and 10 HTLV-I seronegative healthy volunteers prospectively selected from the Mashhad Blood Bank Center.

Treatment consisted of intravenous arsenic (10 mg/day, 5 days/week), subcutaneous IFN (Pooyesh Darou Pharmaceutical Co) (5 million units/day), and oral zidovudine (900 mg/day in 3 divided doses) and was administered to the patients for 30 days. Later on, patients

received maintenance therapy with zidovudine and IFN. In case of toxicity, zidovudine and IFN were either transiently interrupted or their dose was reduced to 600 mg/day and 3 million units per day, respectively. Arsenic dose was not reduced in case of toxicity, but arsenic treatment was transiently interrupted.

This study was approved by the ethical committee of Mashhad University of Medical Sciences. Blood collection was performed on all patients and control subjects after signing informed consent forms in accordance with the Declaration of Helsinki. Peripheral blood mononuclear cells (PBMCs) and serum were obtained from all the patients before and after 30 days of treatment.

Response criteria

Complete remission (CR) was defined as a normalization of the CBC associated with a disappearance of all measurable tumors lasting at least one month. Patients with persistence of less than 5% atypical lymphocytes were also considered in CR as this situation may be seen in healthy carriers of HTLV-I. Very good partial response (VGPR) was defined as a normalization of the CBC associated with a disappearance of all measurable tumors lasting at least one month, but with persistence of more

than 5% atypical lymphocytes on peripheral blood smear. Partial response (PR) was defined as a decrease of more than 50% in the number of leukemia cells and in the size of all measurable tumors. No response (NR) was defined as less than 50% decrease in the number of leukemia cells or in the size of any measurable tumor, or as disease progression.

Flow cytometry analysis

Red blood cells were removed using a lysis solution (Becton Dickinson, San Diego). After fixation of white blood cells for 20 minutes in 0.5% paraformaldehyde solution, the cells were washed twice with PBS then immunostained with specific monoclonal antibodies and incubated in dark for 20 minutes. Monoclonal antibodies used for this study were: anti-CD4- peridinin chlorophyll protein (PerCP), anti-CD3- phycoerythrin (R-PE), anti-CD25-fluorescein isothiocyanate (FITC) and anti-CD8-PE. All monoclonal antibodies (mAbs) were purchased from (IQ-product/Netherlands) and used at 1 in 10 dilution (10 μ l of antibody in 100 μ l of blood). Flow cytometry data was analysed using the CellQuest software (Becton Dickinson, San Diego). Results are presented as the relative fluorescence intensity and percentage of gated cell populations.

Quantification of Foxp3 and cytokine expression by real time RT-PCR

Total RNA was isolated from PBMCs using a TriPure Isolation Reagent (Roche Applied Science, Germany). cDNA was synthesized using a RevertAidTM H minus First Strand cDNA Synthesis Kit (Fermentas, Germany) and stored at -20°C until use. Primers were designed at exon-exon junctions (Beacon Designer <http://WWW.premierbiosoft.com>). All of the selected primers sequences were further analyzed with the Oligo software (<http://WWW.cambio.co.uk/index.php>). Beta 2 microglobulin (β 2m) was used as internal housekeeping control gene to normalize the mRNA expression levels.

Quantification of Foxp3 and cytokine transcript expression was performed using real-time reverse transcriptase (RT) PCR in a rotor gene 6000, Corbett. Taqman method amplification was carried out for Foxp3 using the following primers and probes: Foxp3 sense: 5'ACTAC TTCAAgTTCCACAACATgC-3'; Foxp3 anti sense: 5'g AgTgTCCgCTgCTTCTCTg-3'; Foxp3 probe: 5'TCAC CTACgCCACgTTCATCCgCT3'; β 2m sense: 5'CTTgT CTTTCAGCAAggACTg-3'; β 2m antisense: 5'CCACT TAACTATCTTgggCTgTg-3'; β 2m probe: 5'TCACATgg TTCACACggCAGgCAT-3'. Thermal cycling conditions consisted of an initial step of 10 min at 95°C , followed by 40 cycles at 95°C for 15 s and 60°C for 1 min. Sybergreen amplification was carried out for interleukin-

2 (IL-2), IL-4, IL-10, and IFN- γ using the following primers: IL-2 sense CTCACCAgAggATgCTCACATTTAAg; IL-2 antisense CTCCAgAggTTTgAgTTCTTCTTC; IL-4 sense: CACCgAgTTgACCgTAACAgAC; IL-4 antisense: CCCAggCAGCgAgTgTCC; IL-10 sense: TTgCTggAgg ACTTTAAgggTTAC; IL-10 antisense: CTTgATgTCTggg TCTTggTTCTC; IFN- γ sense: TgggTTCTCTTgg CTg TTAActg; IFN- γ antisense: gAgTTCCATTATCCgCTA CATCTg; β 2m sense: CTTgTCTTTCAgCAAggAC Tgg; β 2m antisense: CCACTTAACTATCTTgggCTg Tg. Sybergreen reactions were carried out in a final reaction volume of 20 μ L using SYBR Premix EX Taq (RR041Q, TaKaRa). Thermal cycling conditions consisted of an initial step of 10 min at 95°C , followed by 40 cycles at 95°C for 10s, 60°C for 30s. For each run, a standard curve was generated using using a five-fold dilution series of a pooled cDNA for Foxp3, IFN- γ , IL-10, IL-2, IL-4 and β 2m. The relative standard curves for both reference and target genes were generated by plotting the threshold cycle value versus the log of the dilution of the cDNA. PCR efficiencies ($10^{-1/\text{slope}^{-1}}$) was automatically calculated by the Rotor Gene Q system Software.

Proviral load

The HTLV-I viral copy number per μ l of blood was calculated from the cell count and the average viral copy number per cell as assessed by quantitative PCR. Real-time quantitative PCR was performed on DNA extracted from peripheral blood mononuclear cells as previously described, using primers and Taqman probe positioned on *tax* gene and *albumin* gene for normalization [30]. TaqMan amplification was carried out in reaction volumes of 25 μ L, with the use of the qPCR MasterMix (Eurogentec, Leuven, Belgium). Each sample was analyzed in triplicate with the use of 250 ng of DNA in each reaction. Thermal cycling was initiated with a 2-minutes incubation at 50°C , followed by a first denaturation step of 10 minutes at 95°C and then by 45 cycles at 95°C for 15 seconds and 58°C for 1 minute for *tax* (or 60°C for 1 minute for *albumin*).

Quantification of IL-10 serum levels

Peripheral blood samples were transferred to serum-separating tubes and centrifuged at 1000g for 20 min after clot formation. The supernatants were carefully harvested, and immediately stored at -80°C until analysis. The serum IL-10 concentration was measured in duplicate by enzyme-linked immunosorbent assay (ELISA) according to the manufacturer's instructions (R&D Systems, MN, USA). Absorbance of each well was measured spectrophotometrically at 450 nm. The amount of IL-10 protein in the samples was calculated

using a reference plot established from serial dilutions of rh IL-10 protein as provided.

Statistical analysis

SPSS Version 16.0 and Microsoft Office Excel 2010 were used for statistical analyses. In scatter plots, means were compared using ANOVA with associated *post-hoc* tests: Dunnett *t*, Tukey, Student-Newman-Keuls (SNK), and Bonferroni tests. All analyzed samples fit normal distributions, except IFN- γ and IL-10 values in ATL patients. Therefore, both mean and median were plotted for ATL patient data, as shown in line diagrams, and were analyzed using parametric and nonparametric (Wilcoxon) paired sample *t*-tests, respectively, to compare values before and after treatment. In all cases, mean and median either both showed statistical significance or both not. For normally distributed data, Pearson correlation was performed. Otherwise, Spearman correlation was used and compared to Pearson's rho tested on log-transformed data, with similar results. Spearman rho was employed for correlations involving ordinal scale data. Statistical significance was reported when the *P*-value was ≤ 0.05 , except in scatter plots comparing ATL patients before and after treatment, for which *P*-values were stated separately in line diagrams. *, *P* < 0.05; **, *P* < 0.01; ***, *P* < 0.001.

Competing interests

The authors declare that they have no competing interests.

Authors' contributions

GK and MT performed diagnostic and molecular analysis and patients' follow up, participated in study design, data analysis and write up of the manuscript. SAR, R, RF, H Rafatpana, AG and MM participated in study design, data analysis and write up of the manuscript. AG and HE performed statistical analysis and participated in data analysis and write up of the manuscript. MK, H Rahimi and AS treated patients and participated in data analysis. FB, MM, RN, ZD and ME participated in data analysis. HD and OH participated in study design, data analysis and write up of the manuscript. AB designed the study and wrote the manuscript. All authors read and approved the final manuscript.

Acknowledgement

This study was supported by Funds from research council of the Mashhad University of Medical Sciences and the Lebanese National Center for Scientific Research (LNCRSR).

Author details

¹Department of Biology, Faculty of Sciences, Lebanese University, Hadath, Lebanon. ²Microbiology and Virology Research Center, Bu-Ali Research Institute, Mashhad University of Medical Sciences, Mashhad, Iran. ³Immunology Research Centre Bu-Ali Research Institute, Mashhad University of Medical Sciences, Mashhad, Iran. ⁴Lebanese American University, School of Arts and Sciences, Beirut, Lebanon. ⁵Faculty of Nursing Sciences, Islamic University, Beirut, Lebanon. ⁶Department of Internal Medicine, Mashhad University of Medical Sciences, Mashhad, Iran. ⁷Department of Internal Medicine, American University of Beirut, Beirut, Lebanon. ⁸Tehran University of Medical Sciences, Tehran, Iran. ⁹INSERM UMR 944 and CNRS UMR 7212, Hôpital Saint Louis, Paris, France. ¹⁰CNRS UMR 8147, Hôpital Necker, Paris, France.

Received: 25 April 2013 Accepted: 22 July 2013
Published: 20 August 2013

References

1. Hinuma Y, Komoda H, Chosa T, Kondo T, Kohakura M, Takenaka T, Kikuchi M, Ichimaru M, Yunoki K, Sato I, et al: **Antibodies to adult T-cell leukemia-virus-associated antigen (ATLA) in sera from patients with ATL and controls in Japan: a nation-wide sero-epidemiologic study.** *Int J Cancer* 1982, **29**:631–635.
2. Polesz BJ, Ruscetti FW, Gazdar AF, Bunn PA, Minna JD, Gallo RC: **Detection and isolation of type C retrovirus particles from fresh and cultured lymphocytes of a patient with cutaneous T-cell lymphoma.** *Proc Natl Acad Sci USA* 1980, **77**:7415–7419.
3. Bazarbachi A, Ghez D, Lepelletier Y, Nasr R, de The H, El-Sabban ME, Hermine O: **New therapeutic approaches for adult T-cell leukaemia.** *Lancet Oncol* 2004, **5**:664–672.
4. Bazarbachi A, Suarez F, Fields P, Hermine O: **How I treat adult T-cell leukemia/lymphoma.** *Blood* 2011, **118**:1736–1745.
5. Tsukasaki K, Hermine O, Bazarbachi A, Ratner L, Ramos JC, Harrington W Jr, O'Mahony D, Janik JE, Bittencourt AL, Taylor GP, et al: **Definition, prognostic factors, treatment, and response criteria of adult T-cell leukemia-lymphoma: a proposal from an international consensus meeting.** *J Clin Oncol* 2009, **27**:453–459.
6. Hermine O, Wattel E, Gessain A, Bazarbachi A: **Adult T cell leukaemia: a review of established and new treatments.** *BioDrugs* 1998, **10**:447–462.
7. Hanchard B: **Adult T-cell leukemia/lymphoma in Jamaica: 1986–1995.** *J Acquir Immune Defic Syndr Hum Retrovirol* 1996, **13**(Suppl 1):S20–S25.
8. Bunn PA Jr, Schechter GP, Jaffe E, Blayney D, Young RC, Matthews MJ, Blattner W, Broder S, Robert-Guroff M, Gallo RC: **Clinical course of retrovirus-associated adult T-cell lymphoma in the United States.** *N Engl J Med* 1983, **309**:257–264.
9. Takatsuki F, Yamaguchi K, Hattori T: **Adult T-cell leukemia/lymphoma.** In *Retrovirus biology and human disease*. Edited by Gallo RC Wong-Staal F. New York: Marcel Dekker; 1990:147–159.
10. Richardson JH, Edwards AJ, Cruickshank JK, Rudge P, Dalgleish AG: **In vivo cellular tropism of human T-cell leukemia virus type 1.** *J Virol* 1990, **64**:5682–5687.
11. Araya N, Sato T, Yagishita N, Ando H, Utsunomiya A, Jacobson S, Yamano Y: **Human T-lymphotropic virus type 1 (HTLV-1) and regulatory T cells in HTLV-1-associated neuroinflammatory disease.** *Viruses* 2011, **3**:1532–1548.
12. Hori S, Nomura T, Sakaguchi S: **Control of regulatory T cell development by the transcription factor Foxp3.** *Science* 2003, **299**:1057–1061.
13. Sakaguchi S: **Regulatory T cells in the past and for the future.** *Eur J Immunol* 2008, **38**:901–937.
14. Yamada Y: **Phenotypic and functional analysis of leukemic cells from 16 patients with adult T-cell leukemia/lymphoma.** *Blood* 1983, **61**:192–199.
15. Kohno T, Yamada Y, Akamatsu N, Kamihira S, Imaizumi Y, Tomonaga M, Matsuyama T: **Possible origin of adult T-cell leukemia/lymphoma cells from human T-lymphotropic virus type-1-infected regulatory T cells.** *Cancer Sci* 2005, **96**:527–533.
16. Chen S, Ishii N, Ine S, Ikeda S, Fujimura T, Ndhlovu LC, Soroosh P, Tada K, Harigae H, Kameoka J, et al: **Regulatory T cell-like activity of Foxp3+ adult T cell leukemia cells.** *Int Immunol* 2006, **18**:269–277.
17. Matsubara Y, Hori T, Morita R, Sakaguchi S, Uchiyama T: **Phenotypic and functional relationship between adult T-cell leukemia cells and regulatory T cells.** *Leukemia* 2005, **19**:482–483.
18. Shimoyama M: **Diagnostic criteria and classification of clinical subtypes of adult T-cell leukaemia-lymphoma: a report from the Lymphoma Study Group (1984–87).** *Br J Haematol* 1991, **79**:428–437.
19. Bazarbachi A, Hermine O: **Treatment of adult T-cell leukaemia/lymphoma: current strategy and future perspectives.** *Virus Res* 2001, **78**:79–92.
20. Tobinai K: **Current management of adult T-cell leukemia/lymphoma.** *Oncology (Williston Park)* 2009, **23**:1250–1256.
21. Taguchi H, Kinoshita KI, Takatsuki K, Tomonaga M, Araki K, Arima N, Ikeda S, Uozumi K, Kohno H, Kawano F, et al: **An intensive chemotherapy of adult T-cell leukemia/lymphoma: CHOP followed by etoposide, vindesine, ranimustine, and mitoxantrone with granulocyte colony-stimulating factor support.** *J Acquir Immune Defic Syndr Hum Retrovirol* 1996, **12**:182–186.
22. Yamada Y, Tomonaga M, Fukuda H, Hanada S, Utsunomiya A, Tara M, Sano M, Ikeda S, Takatsuki K, Kozuru M, et al: **A new G-CSF-supported combination chemotherapy, LSG15, for adult T-cell leukaemia-lymphoma: Japan Clinical Oncology Group Study 9303.** *Br J Haematol* 2001, **113**:375–382.

23. Takasaki Y, Iwanaga M, Imaizumi Y, Tawara M, Joh T, Kohno T, Yamada Y, Kamihira S, Ikeda S, Miyazaki Y, *et al*: Long-term study of indolent adult T-cell leukemia-lymphoma. *Blood* 2010, **115**:4337–4343.
24. Bazarbachi A, Plumelle Y, Carlos Ramos J, Tortevoye P, Otrock Z, Taylor G, Gessain A, Harrington W, Panelatti G, Hermine O: Meta-analysis on the use of zidovudine and interferon- α in adult T-cell leukemia/lymphoma showing improved survival in the leukemic subtypes. *J Clin Oncol* 2010, **28**:4177–4183.
25. Bazarbachi A, El-Sabban ME, Nasr R, Quignon F, Awaraji C, Kersual J, Dianoux L, Zermati Y, Haidar JH, Hermine O, de The H: Arsenic trioxide and interferon- α synergize to induce cell cycle arrest and apoptosis in human T-cell lymphotropic virus type I-transformed cells. *Blood* 1999, **93**:278–283.
26. El-Sabban ME, Nasr R, Dbaibo G, Hermine O, Abboushi N, Quignon F, Ameisen JC, Bex F, de The H, Bazarbachi A: Arsenic-interferon- α -triggered apoptosis in HTLV-I transformed cells is associated with tax down-regulation and reversal of NF- κ B activation. *Blood* 2000, **96**:2849–2855.
27. Nasr R, Rosenwald A, El-Sabban ME, Arnulf B, Zalloua P, Lepelletier Y, Bex F, Hermine O, Staudt L, de The H, Bazarbachi A: Arsenic/interferon specifically reverses 2 distinct gene networks critical for the survival of HTLV-1-infected leukemic cells. *Blood* 2003, **101**:4576–4582.
28. Hermine O, Dombret H, Poupon J, Arnulf B, Lefrere F, Rousselot P, Damaj G, Delarue R, Fermand JP, Brouet JC, *et al*: Phase II trial of arsenic trioxide and alpha interferon in patients with relapsed/refractory adult T-cell leukemia/lymphoma. *Hematol J* 2004, **5**:130–134.
29. El Hajj H, El-Sabban M, Hasegawa H, Zaatari G, Ablain J, Saab ST, Janin A, Mahfouz R, Nasr R, Kfoury Y, *et al*: Therapy-induced selective loss of leukemia-initiating activity in murine adult T cell leukemia. *J Exp Med* 2010, **207**:2785–2792.
30. Kchour G, Tarhini M, Kooshyar MM, El Hajj H, Wattel E, Mahmoudi M, Hatoum H, Rahimi H, Maleki M, Rafatpanah H, *et al*: Phase 2 study of the efficacy and safety of the combination of arsenic trioxide, interferon alpha, and zidovudine in newly diagnosed chronic adult T-cell leukemia/lymphoma (ATL). *Blood* 2009, **113**:6528–6532.
31. Inagaki A, Ishida T, Ishii T, Komatsu H, Iida S, Ding J, Yonekura K, Takeuchi S, Takatsuka Y, Utsunomiya A, Ueda R: Clinical significance of serum Th1-, Th2- and regulatory T cells-associated cytokines in adult T-cell leukemia/lymphoma: high interleukin-5 and -10 levels are significant unfavorable prognostic factors. *Int J Cancer* 2006, **118**:3054–3061.
32. Vieira PL, Christensen JR, Minaee S, O'Neill EJ, Barrat FJ, Boonstra A, Barthlott T, Stockinger B, Wraith DC, O'Garra A: IL-10-secreting regulatory T cells do not express Foxp3 but have comparable regulatory function to naturally occurring CD4+CD25+ regulatory T cells. *J Immunol* 2004, **172**:5986–5993.
33. Karube K, Ohshima K, Tsuchiya T, Yamaguchi T, Kawano R, Suzumiya J, Utsunomiya A, Harada M, Kikuchi M: Expression of FoxP3, a key molecule in CD4CD25 regulatory T cells, in adult T-cell leukaemia/lymphoma cells. *Br J Haematol* 2004, **126**:81–84.
34. Toulza F, Nosaka K, Takiguchi M, Pagliuca T, Mitsuya H, Tanaka Y, Taylor GP, Bangham CR: FoxP3+ regulatory T cells are distinct from leukemia cells in HTLV-1-associated adult T-cell leukemia. *Int J Cancer* 2009, **125**:2375–2382.
35. Roncador G, Garcia JF, Maestre L, Lucas E, Menarguez J, Ohshima K, Nakamura S, Banham AH, Piris MA: FOXP3, a selective marker for a subset of adult T-cell leukaemia/lymphoma. *Leukemia* 2005, **19**:2247–2253.
36. Yamano Y, Araya N, Sato T, Utsunomiya A, Azakami K, Hasegawa D, Izumi T, Fujita H, Aratani S, Yagishita N, *et al*: Abnormally high levels of virus-infected IFN- γ +CCR4+CD4+CD25+ T cells in a retrovirus-associated neuroinflammatory disorder. *PLoS One* 2009, **4**:e6517.
37. Yamano Y, Takenouchi N, Li HC, Tomaru U, Yao K, Grant CW, Maric DA, Jacobson S: Virus-induced dysfunction of CD4+CD25+ T cells in patients with HTLV-I-associated neuroimmunological disease. *J Clin Invest* 2005, **115**:1361–1368.
38. Oh U, Grant C, Griffith C, Fugo K, Takenouchi N, Jacobson S: Reduced Foxp3 protein expression is associated with inflammatory disease during human t lymphotropic virus type 1 Infection. *J Infect Dis* 2006, **193**:1557–1566.
39. Michaelsson J, Barbosa HM, Jordan KA, Chapman JM, Brunialti MK, Neto WK, Nukui Y, Sabino EC, Chieia MA, Oliveira AS, *et al*: The frequency of CD127low expressing CD4+CD25high T regulatory cells is inversely correlated with human T lymphotropic virus type-1 (HTLV-1) proviral load in HTLV-1-infection and HTLV-1-associated myelopathy/tropical spastic paraparesis. *BMC Immunol* 2008, **9**:41.
40. Hayashi D, Kubota R, Takenouchi N, Tanaka Y, Hirano R, Takashima H, Osame M, Izumo S, Arimura K: Reduced Foxp3 expression with increased cytomegalovirus-specific CTL in HTLV-I-associated myelopathy. *J Neuroimmunol* 2008, **200**:115–124.
41. Ramirez JM, Brembilla NC, Sorg O, Chicheportiche R, Matthes T, Dayer JM, Saurat JH, Roosnek E, Chizzolini C: Activation of the aryl hydrocarbon receptor reveals distinct requirements for IL-22 and IL-17 production by human T helper cells. *Eur J Immunol* 2010, **40**:2450–2459.
42. Mori N, Gill PS, Mougdlil T, Murakami S, Eto S, Prager D: Interleukin-10 gene expression in adult T-cell leukemia. *Blood* 1996, **88**:1035–1045.
43. Rautert R, Schinkothe T, Franklin J, Weihrach M, Boll B, Pogge E, Bredenfeld H, Engert A, Diehl V, Re D: Elevated pretreatment interleukin-10 serum level is an International Prognostic Score (IPS)-independent risk factor for early treatment failure in advanced stage Hodgkin lymphoma. *Leuk Lymphoma* 2008, **49**:2091–2098.
44. Fiorentino DF, Bond MW, Mosmann TR: Two types of mouse T helper cell. IV. Th2 clones secrete a factor that inhibits cytokine production by Th1 clones. *J Exp Med* 1989, **170**:2081–2095.
45. Taga K, Mostowski H, Tosato G: Human interleukin-10 can directly inhibit T-cell growth. *Blood* 1993, **81**:2964–2971.
46. Washiyama M, Nishigaki K, Ahmed N, Kinpara S, Ishii Y, Kanzawa N, Masuda T, Kannagi M: IL-2 withdrawal induces HTLV-1 expression through p38 activation in ATL cell lines. *FEBS Lett* 2007, **581**:5207–5212.
47. Mitra-Kaushik S, Harding J, Hess J, Schreiber R, Ratner L: Enhanced tumorigenesis in HTLV-1 tax-transgenic mice deficient in interferon- γ . *Blood* 2004, **104**:3305–3311.
48. Xu X, Heidenreich O, Kitajima I, McGuire K, Li Q, Su B, Nerenberg M: Constitutively activated JNK is associated with HTLV-1 mediated tumorigenesis. *Oncogene* 1996, **13**:135–142.
49. Yano H, Ishida T, Inagaki A, Ishii T, Kusumoto S, Komatsu H, Iida S, Utsunomiya A, Ueda R: Regulatory T-cell function of adult T-cell leukemia/lymphoma cells. *Int J Cancer* 2007, **120**:2052–2057.
50. Li-Weber M, Giaisi M, Chlichlia K, Khazaie K, Krammer PH: Human T cell leukemia virus type 1 Tax enhances IL-4 gene expression in T cells. *Eur J Immunol* 2001, **31**:2623–2632.
51. Portis T, Harding JC, Ratner L: The contribution of NF- κ B activity to spontaneous proliferation and resistance to apoptosis in human T-cell leukemia virus type 1 Tax-induced tumors. *Blood* 2001, **98**(4):1200–1208.
52. Nasr R, El Hajj H, Kfoury Y, de Thé H, Hermine O, Bazarbachi A: Controversies in targeted therapy of adult T cell leukemia/lymphoma: ON target or OFF target effects? *Viruses* 2011, **3**(6):750–769.
53. Datta A, Bellon M, Sinha-Datta U, Bazarbachi A, Lepelletier Y, Canioni D, Waldmann TA, Hermine O, Nicot C: Persistent inhibition of telomerase reprograms adult T-cell leukemia to p53-dependent senescence. *Blood* 2006, **108**(3):1021–1029.

doi:10.1186/1742-4690-10-91

Cite this article as: Kchour *et al*: The combination of arsenic, interferon-alpha, and zidovudine restores an "immunocompetent-like" cytokine expression profile in patients with adult T-cell leukemia lymphoma. *Retrovirology* 2013 **10**:91.

Submit your next manuscript to BioMed Central and take full advantage of:

- Convenient online submission
- Thorough peer review
- No space constraints or color figure charges
- Immediate publication on acceptance
- Inclusion in PubMed, CAS, Scopus and Google Scholar
- Research which is freely available for redistribution

Submit your manuscript at
www.biomedcentral.com/submit

