

## **Pulmonary arterial hypertension.**

David Montani, Sven Günther, Peter Dorfmüller, Frédéric Perros, Barbara Girerd, Gilles Garcia, Xavier Jaïs, Laurent Savale, Elise Artaud-Macari, Laura Price, et al.

► **To cite this version:**

David Montani, Sven Günther, Peter Dorfmüller, Frédéric Perros, Barbara Girerd, et al.. Pulmonary arterial hypertension.. Orphanet Journal of Rare Diseases, BioMed Central, 2013, 8 (1), pp.97. <10.1186/1750-1172-8-97>. <inserm-00851405>

**HAL Id: inserm-00851405**

**<http://www.hal.inserm.fr/inserm-00851405>**

Submitted on 14 Aug 2013

**HAL** is a multi-disciplinary open access archive for the deposit and dissemination of scientific research documents, whether they are published or not. The documents may come from teaching and research institutions in France or abroad, or from public or private research centers.

L'archive ouverte pluridisciplinaire **HAL**, est destinée au dépôt et à la diffusion de documents scientifiques de niveau recherche, publiés ou non, émanant des établissements d'enseignement et de recherche français ou étrangers, des laboratoires publics ou privés.

REVIEW

Open Access

# Pulmonary arterial hypertension

David Montani<sup>1,2,3†</sup>, Sven Günther<sup>1,2,3†</sup>, Peter Dorfmueller<sup>1,2,3</sup>, Frédéric Perros<sup>1,2,3</sup>, Barbara Girerd<sup>1,2,3</sup>, Gilles Garcia<sup>1,2,3</sup>, Xavier Jaïs<sup>1,2,3</sup>, Laurent Savale<sup>1,2,3</sup>, Elise Artaud-Macari<sup>1,2,3</sup>, Laura C Price<sup>4</sup>, Marc Humbert<sup>1,2,3</sup>, Gérald Simonneau<sup>1,2,3</sup> and Olivier Sitbon<sup>1,2,3\*</sup>

## Abstract

Pulmonary arterial hypertension (PAH) is a chronic and progressive disease leading to right heart failure and ultimately death if untreated. The first classification of PH was proposed in 1973. In 2008, the fourth World Symposium on PH held in Dana Point (California, USA) revised previous classifications. Currently, PH is divided into five subgroups. Group 1 includes patients suffering from idiopathic or familial PAH with or without germline mutations. Patients with a diagnosis of PAH should systematically be screened regarding to underlying mutations of *BMPR2* gene (bone morphogenetic protein receptor type 2) or more rarely of *ACVRL1* (activine receptor-like kinase type 1), *ENG* (endogline) or *Smad8* genes. Pulmonary veno occlusive disease and pulmonary capillary hemangiomatosis are individualized and designated as clinical group 1'. Group 2 'Pulmonary hypertension due to left heart diseases' is divided into three sub-groups: systolic dysfunction, diastolic dysfunction and valvular dysfunction. Group 3 'Pulmonary hypertension due to respiratory diseases' includes a heterogeneous subgroup of respiratory diseases like PH due to pulmonary fibrosis, COPD, lung emphysema or interstitial lung disease for example. Group 4 includes chronic thromboembolic pulmonary hypertension without any distinction of proximal or distal forms. Group 5 regroup PH patients with unclear multifactorial mechanisms. Invasive hemodynamic assessment with right heart catheterization is requested to confirm the definite diagnosis of PH showing a resting mean pulmonary artery pressure (mPAP) of  $\geq 25$  mmHg and a normal pulmonary capillary wedge pressure (PCWP) of  $\leq 15$  mmHg. The assessment of PCWP may allow the distinction between pre-capillary and post-capillary PH (PCWP  $> 15$  mmHg). Echocardiography is an important tool in the management of patients with underlying suspicion of PH. The European Society of Cardiology and the European Respiratory Society (ESC-ERS) guidelines specify its role, essentially in the screening proposing criteria for estimating the presence of PH mainly based on tricuspid regurgitation peak velocity and systolic artery pressure (sPAP). The therapy of PAH consists of non-specific drugs including oral anticoagulation and diuretics as well as PAH specific therapy. Diuretics are one of the most important treatment in the setting of PH because right heart failure leads to fluid retention, hepatic congestion, ascites and peripheral edema. Current recommendations propose oral anticoagulation aiming for targeting an International Normalized Ratio (INR) between 1.5-2.5. Target INR for patients displaying chronic thromboembolic PH is between 2-3. Better understanding in pathophysiological mechanisms of PH over the past quarter of a century has led to the development of medical therapeutics, even though no cure for PAH exists. Several specific therapeutic agents were developed for the medical management of PAH including prostanoids (epoprostenol, treprostenil, iloprost), endothelin receptor antagonists (bosentan, ambrisentan) and phosphodiesterase type 5 inhibitors (sildenafil, tadalafil). This review discusses the current state of art regarding to epidemiologic aspects of PH, diagnostic approaches and the current classification of PH. In addition, currently available specific PAH therapy is discussed as well as future treatments.

\* Correspondence: olivier.sitbon@bct.aphp.fr

† Equal contributors

<sup>1</sup>Univ. Paris-Sud, Faculté de Médecine, Kremlin-Bicêtre F-94270, France

<sup>2</sup>AP-HP, DHU TORINO, Centre de Référence de l'Hypertension Pulmonaire Sévère, Service de Pneumologie et Réanimation Respiratoire, Hôpital Bicêtre, Le Kremlin-Bicêtre F-94270, France

Full list of author information is available at the end of the article

## Definition and classification

Pulmonary arterial hypertension (PAH) is defined by right-heart catheterization (RHC) showing precapillary pulmonary hypertension with a mean pulmonary artery pressure (mPAP) of >25 mmHg and a normal pulmonary artery wedge pressure (PCWP) of <15 mmHg [1,2]. The classification of pulmonary hypertension (PH) has gone through a series of changes since the first classification proposed in 1973 which designated only two categories, primary pulmonary hypertension or secondary PH, depending on the presence or absence of identifiable causes or risk factors [3,4]. In 1998, a second World Symposium on PH was held in Evian (France) and this classification attempted to create categories of PH that shared similar pathogenesis, clinical features and therapeutic options [5]. This classification allowed defining homogenous groups of patients to conduct clinical trials and to obtain approval for specific PAH therapies worldwide. In 2003, the third World Symposium on PH (Venice, Italy) did not propose major changes. However, the terms idiopathic PAH, familial PAH, and associated PAH were introduced. The other prominent change was to move pulmonary veno-occlusive disease (PVOD) and pulmonary capillary hemangiomatosis (PCH) from separate categories into a single subcategory of PAH.

In 2008, the fourth World Symposium on PH held in Dana Point (California, USA) and the consensus of an international group of experts was to revise previous classifications in order to accurately reflect published data, as well as to clarify some areas that were unclear. In 2013, the fifth World Symposium on PH held in Nice (France) and proposed only minor modifications, however, since the definite conclusions of this symposium were not yet published, we presented the Dana Point classification of PH (Table 1).

### Group 1: Pulmonary arterial hypertension

The nomenclature of the subgroups and associated conditions has evolved since the first classification, and additional modifications were added in the Dana Point classification.

#### Group 1.1/1.2 Idiopathic and heritable PAH

Idiopathic PAH describes a sporadic disease with neither a family history of PAH nor an identified risk factor. When PAH occurs in a familial context, germline mutations in the *bone morphogenetic protein receptor 2* (*BMPR2*) gene, a member of the transforming growth factor beta (TGF- $\beta$ ) signaling family, can be detected in about 70% of cases [6,7]. More rarely, mutations in *activin receptor like kinase type 1* (*ACVRL1* or *ALK1*) or *endoglin* genes, also coding for members of the TGF- $\beta$  signaling family, have been identified in patients with PAH, predominantly with coexistent hereditary

hemorrhagic telangiectasia. Some authors suggested that mutations of genes encoding for Smads proteins (*Smad8*, *Smad1* and *Smad5*), which are other members of the TGF- $\beta$  signaling pathway, or mutations in *caveolin-1* gene may predispose to PAH [8-10].

*BMPR2* mutations have also been detected in 11–40% of apparently idiopathic cases with no family history

**Table 1 Diagnostic classification of pulmonary hypertension**

<b>1. Pulmonary arterial hypertension (PAH)</b>	1.1 Idiopathic
	1.2 Heritable
	1.3 Drugs and toxins induced
	1.4 Associated with (APAH):
	1.4.1 Connective tissue disease
	1.4.2 Infection with human immunodeficiency virus
	1.4.3 Portal hypertension
1.4.4 Congenital heart disease	
1.4.5 Schistosomiasis	
1.4.6 Chronic haemolytic anaemia	
1.5 Persistent pulmonary hypertension of the newborn	
<b>2. Pulmonary hypertension with left heart disease</b>	2.1 Systolic dysfunction
	2.2 Diastolic dysfunction
	2.3 Valvular disease
<b>3. Pulmonary hypertension due to lung diseases and/or hypoxia</b>	3.1 Chronic obstructive pulmonary disease
	3.2 Interstitial lung disease
	3.3 Other pulmonary diseases with mixed restrictive and obstructive pattern
	3.4 Sleep-disordered breathing
	3.5 Alveolar hypoventilation disorders
	3.6 Chronic exposure to high altitude
	3.7 Developmental abnormalities
<b>4. Chronic thromboembolic pulmonary hypertension</b>	
<b>5. PH with unclear and/or multifactorial mechanisms</b>	5.1 Haematological disorders: myeloproliferative disorders, splenectomy.
	5.2 Systemic disorders: sarcoidosis, pulmonary Langerhans cell histiocytosis, lymphangioliomyomatosis, neurofibromatosis, vasculitis
	5.3 Metabolic disorders: glycogen storage disease, Gaucher disease, thyroid disorders
	5.4 Others: tumoral obstruction, fibrosing mediastinitis, chronic renal failure on dialysis

This classification was adapted from (Simonneau et al. [16]).

[11,12]. Indeed, the distinction between idiopathic and familial PAH with *BMP2* mutations is artificial, as all patients with a *BMP2* mutation have heritable disease. In addition, *BMP2* mutations were identified in only 70-80% families with PAH. Thus, it was decided to abandon the term “familial PAH” in favor of the term “heritable PAH”, including idiopathic PAH with germline mutations and familial cases with or without identified mutations [13,14].

**Group 1.3 Drug- and toxin-induced PAH**

A number of risk factors for the development of PAH have been individualized in the last European Respiratory Society/ European Society of Cardiology (ERS/ESC) conjoint guidelines of PH [15] (Table 2).

Aminorex, fenfluramine derivatives and toxic rapeseed oil represent the only identified “definite” risk factors for PAH [5,16]. Souza et al. have demonstrated that this subgroup of PAH shares clinical, functional, hemodynamic, and genetic features with idiopathic PAH, suggesting that fenfluramine exposure represents a potential trigger for PAH without influencing its clinical course [17].

Two prospective epidemiologic investigations, the SNAP (Surveillance of North American Pulmonary Hypertension) and the SOPHIA (Surveillance of Pulmonary Hypertension

in America) study, were conducted in the USA [18,19]. These investigations included retrospectively 559 and 1335 patients with PH, respectively, and confirmed the previously described association between idiopathic PAH and the use of fenfluramine. In the SNAP study, the odds ratio of developing PH was 7.5 for the use of fenfluramine more than six months of treatment [18].

The agent benfluorex is structurally and pharmacological related to fenfluramine and may be also considered as an anorectic agent. Frachon and co-workers [20] showed a significantly higher prevalence of unexplained valvular heart disease in patients taking benfluorex compared to controls. In addition, Savale and co-workers demonstrated recently that exposure to benfluorex is suggested to be a trigger in the development of PAH [21]. Benfluorex was withdrawn from the market in 2009.

The SOPHIA study examined intake of a variety of nonselective monoamine reuptake inhibitors, selective serotonin reuptake inhibitors, antidepressants and anxiolytics. No increased risk of developing PAH was observed [19].

Amphetamine use represents a “likely” risk factor, although they are frequently used in combination with fenfluramine. A recent retrospective study suggested a relationship with the use of methamphetamine (inhaled, smoked, oral, or intravenous) and the occurrence of PAH [22]. Methamphetamine use is now considered a “very likely” risk factor for the development of PAH.

Recently published data from the French registry of pulmonary hypertension suggested that dasatinib, a tyrosine kinase inhibitor (TKI), may induce precapillary PAH [23]. Several cases of precapillary PH in chronic myelogenous leukemia patients treated with dasatinib have been reported.

**Table 2 Updated risk level of drugs and toxins known to be associated with PAH**

1. Definite	Aminorex
	Fenfluramine
	Dexfenfluramine
	Toxic rapeseed oil
	Benfluorex
2. Likely	Amphetamines
	L-tryptophan
	Metamphetamines
	Dasatinib
3. Possible	Cocaine
	Phenylpropanolamine
	St John’s Wort
	Chemotherapeutic agents
	Selective serotonin reuptake inhibitors
	Pergolide
4. Unlikely	Oral contraceptives
	Estrogen therapy
	Cigarette smoking

\*This table was adapted from Galiè et al. [15].

**Group 1.4.1 PAH associated with connective tissue diseases**

PAH associated with connective tissue diseases (CTD) represents an important clinical subgroup, in which systemic sclerosis represents the major cause of CTD associated PAH. The prevalence of PAH has been well established only for systemic sclerosis (SSc). Prospective studies using echocardiography as a screening method and RHC for confirmation found a prevalence of PAH between 7–12% [24,25]. PH due to lung fibrosis [26], diastolic left heart dysfunction [27] and primary cardiac involvement [28] are also frequent in the setting of pulmonary hypertension in these patients, emphasizing the importance of a systemic evaluation with RHC to accurately classify the underlying mechanism of PH.

**Group 1.4.2 HIV infection**

PAH is a rare complication of HIV infection [29,30]. HIV-associated PAH has clinical, hemodynamic, and

histologic characteristics broadly similar to those seen in idiopathic PAH. Epidemiologic data in the early 1990s, a time when therapy with highly active antiretroviral therapy was not yet available, indicated a prevalence of 0.5% [31]. The prevalence of HIV-associated PAH was evaluated more recently and showed a stable prevalence of 0.46% [32].

#### **Group 1.4.3 Porto-pulmonary hypertension**

Porto-pulmonary hypertension (POPH) is defined by the development of PAH associated with increased pressure in the portal circulation [33,34]. Prospective hemodynamic studies have shown that 2-6% of patients with portal hypertension had PH [35,36]. However, RHC is mandatory for the diagnosis of portal PH, as several mechanisms may increase pulmonary artery pressure in the setting of advanced liver disease: hyperdynamic circulatory state with high cardiac output, fluid overload and diastolic dysfunction. Pulmonary vascular resistance (PVR) is usually normal in these cases.

#### **Group 1.4.4 Congenital heart diseases**

A significant proportion of patients with congenital heart disease (CHD), in particular those with systemic-to-pulmonary shunts, will develop PAH if left untreated. Eisenmenger's syndrome is defined as CHD with an initial large systemic-to-pulmonary shunt that induces progressive pulmonary vascular disease and PAH, with resultant reversal of the shunt and central cyanosis [37,38]. It represents the most advanced form of PAH associated with CHD. It has been reported that a large proportion of patients with CHD develop some degree of PAH [39-41]. The prevalence of PAH associated with congenital systemic-to-pulmonary shunts in Europe and North America has been estimated between 1.6 and 12.5 cases per million adults, with 25-50% of this population affected by Eisenmenger's syndrome.

#### **Group 1.4.5 Schistosomiasis**

In the Dana Point classification, PH associated with schistosomiasis was included in Group 1. Recently, it has been demonstrated that PH associated with schistosomiasis may have a similar clinical presentation and histological findings as idiopathic PAH [42,43]. The mechanism of PAH in patients with schistosomiasis is probably multifactorial including portal PH, a frequent complication of this disease [44] and local vascular inflammation, whereas mechanical obstruction by schistosome eggs seems to play a minor role. More than 200 million people are infected and 4-8% of them will develop hepatosplenic disease. Then, PAH associated with schistosomiasis represents a frequent form of PAH in countries where the infection is endemic. Data from a recent study based on invasive hemodynamics evidenced

the prevalence of PAH in patients with hepatosplenic disease of 4.6%; also important was the prevalence of post-capillary hypertension (3%) reinforcing the need of invasive hemodynamics for the specific diagnosis of PAH in schistosomiasis [45].

#### **Group 1.4.6 Chronic hemolytic anemia**

The chronic hemolytic anemias represent a subcategory of PAH. There has been increasing evidence that PAH is a complication of chronic hereditary and acquired hemolytic anemias, including sickle cell disease [46,47], thalassemia [48], hereditary spherocytosis [49], stomatocytosis [50], and microangiopathic hemolytic anemia [51].

PH has been reported most frequently in patients with sickle cell disease, however the prevalence of PAH is not yet clearly established. The prevalence of PH in sickle cell disease is undoubtedly much lower than 32% as suggested by echocardiography [47]. Recently, a prospective epidemiologic studies using echocardiographic screening and direct hemodynamic confirmation were conducted in 398 outpatients with sickle cell disease at referral centers in France [52]. In this study, the prevalence of a tricuspid regurgitant jet velocity of at least 2.5 m per second measured by echocardiography was 27%. In contrast, the prevalence of pulmonary hypertension confirmed on catheterization was only 6%, suggesting that echocardiographic evaluation alone had a low positive predictive value for PH in this population. Indeed, the precise mechanism of PAH in sickle cell disease remains uncertain.

#### **Group 1': Pulmonary veno-occlusive disease and/or pulmonary capillary hemangiomatosis**

PVOD and PCH are uncommon conditions, but they are increasingly recognized as causes of PH [53]. A recent clinicopathologic study [54] analyzed specimens from 35 patients diagnosed as having either PVOD (n = 30) or PCH (n = 5). PCH was identified in 24 (73%) cases diagnosed as PVOD. Indeed, venous involvement was present in 4/5 cases initially diagnosed as PCH. These findings suggest that PCH may be an angioproliferative process frequently associated with PVOD. Similarities in pathologic features and clinical presentation suggest that these disorders may be two different presentation of the same disease [54].

Although PVOD and PCH may present similarly to idiopathic PAH, there are a number of important differences. These include the presence of crackles on examination, radiologic abnormalities on high-resolution computed tomography of the chest (ground glass opacities, septal thickening, mediastinal adenopathy) [55-58], hemosiderin-laden macrophages on bronchoalveolar lavage [59], and a lower DLCO and PaO<sub>2</sub> in patients with



PVOD or PCH [58]. PVOD/PCH remains a difficult disorder to categorize, as it shares characteristics with idiopathic PAH but also has a number of distinct differences. Given the current evidence, it was decided that PVOD/PCH should be a distinct category but not completely separated from PAH and PVOD/PCH are designated as 1' in the current classification.

#### **Group 2: Pulmonary hypertension due to left heart disease**

Left-sided ventricular or valvular diseases may produce an increase of left atrial pressure, leading to a backward transmission of the pressure and a passive increase of pulmonary arterial pressure. Left heart disease, probably represents the most frequent cause of PH [60]. In this situation, PVR is normal or near normal (<3.0 Wood units) and there is no gradient between mean PAP and pulmonary wedge pressure (transpulmonary gradient <12 mm Hg). In the Dana Point classification, the increasing recognition of left-sided heart dysfunction with preserved ejection fraction leads to changes in the sub-categories of Group 2 and now this group include three distinct etiologies: left heart systolic dysfunction, left heart diastolic dysfunction, and left heart valvular disease. In some patients with left heart disease, the elevation of pulmonary arterial pressure is out of proportion to that expected from the elevation of left arterial pressure (transpulmonary gradient >12 mm Hg), and PVR is increased to >3.0 Wood units (19–35% of patients) [60]. However, there is no widely accepted hemodynamic definition of transpulmonary gradient, and future recommendations may propose new definition and threshold of this gradient. Some patients with left heart valvular disease or even left heart dysfunction can develop severe PH of the same magnitude as that seen in PAH [61–63]. The elevation of PAP and PVR may be due to either the increase of pulmonary artery vasomotor tone and/or pulmonary vascular remodeling [64,65].

#### **Group 3: Pulmonary hypertension due to lung diseases and/or hypoxia**

In this group, the predominant cause of PH is alveolar hypoxia as a result of either chronic lung disease, impaired control of breathing, or residence at high altitude. However, the precise prevalence of PH in all these conditions remains largely unknown. In the revised classification, the heading has been modified to reinforce the link with the development of PH. A category of lung disease characterized by a mixed obstructive and restrictive pattern was added, including chronic bronchiectasis, cystic fibrosis and the recently described syndrome of combined pulmonary fibrosis and emphysema in which the prevalence of PH is almost 50% [66,67]. In PAH associated with parenchymal lung disease, the increase of

pulmonary arterial pressure is usually modest (mean PAP lower than 35 mmHg) [68]. Interestingly, in some patients, increase of PAP is out of proportion and be higher than 35 mmHg [69]. In a retrospective study of 998 patients with chronic obstructive pulmonary disease who underwent RHC, only 1% had severe PH [70]. These patients with more severe PH were characterized by mild-to-moderate airway obstruction, severe hypoxemia, hypocapnia, and a very low diffusing capacity for carbon monoxide.

#### **Group 4: Chronic thromboembolic pulmonary hypertension**

Chronic thromboembolic pulmonary hypertension (CTEPH) was included in Group 4. The incidence of CTEPH is uncertain. CTEPH represents however a frequent cause of PH and occurs in up to 4% of patients after an acute pulmonary embolism [71,72]. In the classification from the third World Symposium on PH, CTEPH was divided into 2 subgroups: proximal CTEPH and distal CTEPH, depending on the feasibility of performing pulmonary thromboendarterectomy. Currently, there is no consensus about the definitions of proximal and distal CTEPH and the decision of surgery may vary depending on individual centers [73]. Thus, the Dana Point Classification propose only one group irrespectively of proximal or distal obstruction. Patients with suspected or confirmed CTEPH need to be referred to expert centers with experience in the management of CTEPH, to consider the feasibility of performing surgery. The indication for surgery depends on the location of the obstruction, the correlation between hemodynamics and the degree of obstruction assessed by angiography, comorbidities, the willingness of the patient, and the experience of the surgeon [74,75]. Patients who are not candidates for surgery may benefit from PAH-specific medical therapy [76,77]; however, further evaluation of these therapies in randomized control trials are needed [78].

#### **Group 5: PH with unclear or multifactorial etiologies**

##### **Group 5.1 Hematologic disorders**

PH has been reported in chronic myeloproliferative disorders including polycythemia vera, essential thrombocythemia, and chronic myeloid leukemia [79,80]. Several mechanisms may be implicated in PH associated with chronic myeloproliferative disorders including high cardiac output, asplenia, direct obstruction of pulmonary arteries by circulating megakaryocytes [81], CTEPH [82], portal PH, and congestive heart failure. Splenectomy as a result of trauma or as a treatment for hematologic disorders may increase the risk of developing PH [83]. As described above, dasatinib use may be one cause of PAH, particularly in chronic myeloid leukemia [23].

### **Group 5.2 Systemic disorders**

The second subgroup includes systemic disorders, including sarcoidosis, pulmonary Langerhans cell histiocytosis, lymphangiomyomatosis, neurofibromatosis or vasculitis.

PH is a well recognized complication of sarcoidosis [84], with a reported prevalence of 1–28% [84]. PH is multifactorial and usually attributed to the destruction of capillary bed by the fibrotic process and/or the result of chronic hypoxemia [85]. However, the severity of PH is frequently out of proportion to the degree of parenchymal lung disease and blood gas abnormalities, suggesting specific pulmonary vascular involvement [86]. Such mechanisms may include extrinsic compression of large pulmonary arteries by lymph node enlargement, and granulomatous infiltration of the pulmonary vasculature, especially the pulmonary veins, which sometimes mimic PVOD [87].

Pulmonary Langerhans cell histiocytosis is an uncommon cause of infiltrative and destructive lung disease. Severe PH is a common feature in patients with end stage disease [88] and PH in these patients is usually related to chronic hypoxemia and/or abnormal pulmonary mechanics. Histopathologic examination has shown severe diffuse pulmonary vasculopathy involving predominantly intralobular pulmonary veins and, to a lesser extent, muscular pulmonary arteries [89].

Lymphangiomyomatosis is a rare multisystem disorder predominantly affecting women, characterized by cystic lung destruction, lymphatic abnormalities, and abdominal tumors. PH is relatively uncommon in patients with lymphangiomyomatosis [90]. Recently, a series of 20 cases of lymphangiomyomatosis associated PH has been reported showing that PH is usually moderate in this setting and associated with pulmonary function impairment [91].

Neurofibromatosis type 1, also known as von Recklinghausen's disease, is an autosomal-dominant disease. The disease is occasionally complicated by systemic vasculopathy. A series of cases of PH have been reported in the setting of Neurofibromatosis type-1 [92].

### **Group 5.3 Metabolic disorders**

PH has been reported in a few cases of type Ia glycogen storage disease, a rare autosomal-recessive disorder caused by a deficiency of glucose-6-phosphatase [93-95]. The mechanisms of PH are uncertain but portocaval shunts, atrial septal defects, severe restrictive pulmonary function defects or thrombosis are thought to play a role. In one case, autopsy findings revealed the presence of plexiform lesions [96].

Gaucher's disease is a rare disorder characterized by a deficiency of lysosomal B glucosidase, which results in an accumulation of glucocerebroside in reticuloendothelial

cells. In a study of 134 patients with Gaucher's disease who were systematically screened by echocardiography, PH was not uncommon [97]. In this setting, several potential mechanisms for PH have been suggested, including interstitial lung disease, chronic hypoxemia, capillary plugging by Gaucher cells and splenectomy [97,98].

The association between thyroid diseases and PH has been reported in some studies [99]. A prospective study of 63 consecutive adult patients with PAH found a prevalence of autoimmune thyroid disease, including both hypothyroidism and hyperthyroidism, in 49%, suggesting that these conditions may share a common immunogenetic susceptibility [100].

### **Group 5.4 Miscellaneous conditions**

The last subgroup includes a number of miscellaneous conditions, including tumoral obstruction, fibrosing mediastinitis or chronic renal failure on dialysis.

A progressive obstruction of proximal pulmonary arteries leading to PH may be observed in tumor obstruction when a tumor grows into the central pulmonary arteries with additional thrombosis. Such cases are due principally to pulmonary artery sarcomas, which occur rarely but are usually rapidly fatal [101-103]. The differential diagnosis with CTEPH can be difficult and CT angiography may be useful to differentiate an obstruction by tumor or thrombotic material. Occlusion of the microvasculature by metastatic tumor emboli represents a cause of rapidly progressive PH.

Fibrosing mediastinitis have been mainly reported in sarcoidosis, tuberculosis, histoplasmosis and after radiotherapy. Fibrosing mediastinitis may be associated with severe PH due to compression of both pulmonary arteries and veins.

Lastly, PH has been reported in patients with end-stage renal disease maintained on long-term hemodialysis. Based on echocardiographic studies, the prevalence of PH in this patient population is estimated up to 40% [104]. PH in these patients may be explained by high cardiac output (resulting from the arteriovenous access, anemia and fluid overload) and potential diastolic and systolic left heart dysfunctions. Furthermore, hormonal and metabolic modification associated with end-stage renal disease might lead to dysfunction of normal pulmonary vascular tone.

## **Epidemiology**

Information relative to the natural history of PAH was derived from a national registry conducted in the USA in the early 1980s, which included 187 patients with idiopathic PAH followed for up to 5 years. This study characterized the disease and confirmed its poor prognosis with a median survival of 2.8 years [105,106]. Better understanding of pathophysiological mechanisms of PAH has led to the development of novel therapeutic

strategies in the last decade which improved quality of life, exercise capacity and survival of these PH patients [107].

In France, a national multicenter registry prospectively collected data from 674 adults with PAH from October 2002 to October 2003 and followed these patients during a 3-year period [108]. This prospective study has shown more up to date data on the epidemiology of PAH. This registry has confirmed the female predominance in most subtypes of PAH with a female/male sex ratio (SR) of 1.9 for all PAH patients, and particularly in idiopathic PAH (SR 1.6), familial PAH (SR 2.2) and anorexigen-associated PAH (SR 14.9) [108]. The mean age of PAH patients in this cohort was 50 years with a quarter of patients older than 60 years underlining the possibility of developing PAH in all ages. In this assessed cohort, 39.2% of patients had idiopathic PAH and 3.9% familial PAH. In the subgroup of PAH, where PAH was associated with other conditions, 15.3% had connective tissue disease, 11.3% congenital heart diseases, 10.4% portal hypertension, 9.5% anorexigen-related PAH and 6.2% HIV infection [108]. In France, the low estimation of the prevalence of PAH and idiopathic PAH are respectively of 15 cases and 5.9 cases/million adult inhabitants. The low estimation of PAH incidence is 2.4 cases/million adult inhabitants/year. This study conducted five years after the withdrawal of fenfluramine derivatives underlines that anorexigen-associated PAH remains an important medical problem nowadays.

Recent prospective data in consecutive patients with idiopathic, familial or anorexigen-associated PAH patients followed-up for a period of three years (56 incident and 298 prevalent cases) showed better survival rates than historical cohort. For incident cases, estimated survival rates were 85.7%, 69.6% and 54.5% at one, two and three year of follow-up, respectively. In combined

mixed population (incident patients and prevalent patients diagnosed within three years before study entry), estimated one, two and three year survival was 82.9%, 67.1% and 58.2%, respectively. Parameters significantly associated to improved survival were female gender, preserved 6-MWD and normal cardiac output on RHC [109].

Data from the REVEAL registry (US Registry to Evaluate Early and Long-Term PAH Disease Management) are similar concerning the one year survival rate estimated to 91%. Variables independently associated with increased mortality included pulmonary vascular resistance >32 Wood units, NYHA functional class IV, men older than 60 years and family history of PAH [110].

### Genetics

It is now well known that PAH can be either sporadic or clustered in families [111-114]. In 1954, Dresdale published a detailed description of a family that included three related subjects with severe PAH of unknown aetiology. Because of physician's awareness of the familial occurrence of the disease, other cases of familial PAH were described. The National Institute of Health Registry (NIH Registry) provided the first estimate of this condition, and evaluated that at least 6% of individuals diagnosed with sporadic PAH have a family history of the disorder. In the French PAH registry, 26 cases of familial PAH were identified in the cohort of 674 patients, which corresponds to a prevalence of 3.9% of all cases of PAH and a proportion of 7.3% of familial PAH in the subgroup of idiopathic, familial or anorexigen-associated PAH [108]. Studies of genealogies of familial PAH advanced our understanding that the disease segregates an autosomal dominant trait with a markedly reduced penetrance, since only 10-20% of necessary carriers of the mutation will develop PAH [115,116]. In 2000, linkage analysis in PAH affected families found mutations within the *bone morphogenetic protein receptor type 2 gene (BMPR2)* [117,118]. *BMPR2* gene encodes for a type 2 receptor member of the transforming growth factor beta (TGF- $\beta$ ) family. Nowadays, germline *BMPR2* mutations are detected in 58-74% of PAH patients with a family history of the disease, and in 3.5-40% of so called idiopathic PAH patients [6,11,108,119-123]. The observation of the development of PAH in patients displaying hereditary hemorrhagic telangiectasia (HHT), an autosomal dominant vascular dysplasia, allowed us to identify two other PAH predisposing genes: *ACVRL1 (Activin A receptor type II-like kinase 1)* and *ENG (endoglin)* genes. Mutations in these two genes are infrequent in PAH but are frequently identified in HHT [120,124-130]. Moreover, recent reports described two PAH patients carriers of a mutation in *Smad8* gene, one PAH patient carrier of a *Smad1* mutation and one PAH

**Table 3 Modified New York Heart Association (NYHA) classification for pulmonary hypertension**

CLASS I	Patients with pulmonary hypertension but without resulting limitation of physical activity. Ordinary physical activity does not cause undue dyspnoea or fatigue, chest pain, or near syncope.
CLASS II	Patients with pulmonary hypertension resulting in slight limitation of physical activity. They are comfortable at rest. Ordinary physical activity causes undue dyspnoea or fatigue, chest pain, or near syncope.
CLASS III	Patients with pulmonary hypertension resulting in marked limitation of physical activity. They are comfortable at rest. Less than ordinary activity causes undue dyspnoea or fatigue, chest pain, or near syncope.
CLASS IV	Patients with pulmonary hypertension with inability to carry out any physical activity without symptoms. These patients manifest signs of right heart failure. Dyspnoea and/or fatigue may even be present at rest. Discomfort is increased by any physical activity.



patient carrier of a Smad5 mutation [8,9]. *BMP2* gene, *ACVRL1*, *ENG*, Smad8, Smad1 and Smad5 genes are encoding proteins which are involved in the TGF- $\beta$  signaling pathway. More recently, using whole exome sequencing in a large PAH family, Austin et al. demonstrated the involvement of mutations in *caveolin-1* gene in the development of PAH [10]. They confirmed their findings identifying a *caveolin-1* mutation in an unrelated PAH patient. Caveolin-1 protein is necessary for the formation of caveolae, which are crucial for joining membrane receptors and initiating cellular signaling cascade such as TGF- $\beta$  signaling pathway. This supports the hypothesis that mutations in genes involved in the TGF- $\beta$  signaling pathway may be a trigger for pulmonary vascular remodeling. Moreover, this signaling pathway controls growth, differentiation and apoptosis of various cell types like pulmonary vascular endothelial cells (ECs) and smooth muscle cells (SMCs). Thereby, mutations in genes involved in the TGF- $\beta$  signaling pathway may be responsible for abnormal proliferation of pulmonary vascular SMCs and may promote ECs apoptosis, which might lead to the selection of apoptosis resistant cells and formation of plexiform lesions, the hallmark of idiopathic PAH [131,132].

The analysis of clinical, functional and hemodynamic characteristics of PAH patients revealed that patients carriers of a *BMP2* or an *ACVRL1* mutation are younger at diagnosis than patients with idiopathic PAH. In addition, they have more severe hemodynamic parameters at diagnosis [114,120].

Several lines of evidence point to the potential requirement of additional factors, either environmental or genetic, in the pathogenesis of the disease. As mentioned, Humbert and co-workers have shown that exposure to fenfluramine derivatives greatly increase the risk of developing severe PAH in patients with *BMP2* mutations [111]. Moreover, modified genes could participate or facilitate the development of PAH. In fact, recent studies have suggested the potential role of serotonin transporters, serotonin receptors, potassium channels, or angiotensin-1 [133]. Finally, PAH mostly occurs in females irrespective of *BMP2* mutation status [134]. To explain overrepresentation of PAH female patients, it was suggested that estrogen metabolism might participate in the pathogenesis of PAH [135,136].

### Pathophysiology

PAH is a disease which affects small pulmonary arteries. It is characterized by vascular obstruction leading to progressive increase in vascular resistance. This increases right ventricular afterload and consequently results in right ventricular failure. Intima and media proliferation and its consequent pulmonary vascular obstruction are considered to be the key element in the

pathogenesis of PAH. Vasoconstriction, vascular remodeling and thrombosis are factors that increase pulmonary vascular resistance in PAH [107,137]. These processes involve a multitude of cellular and molecular elements (Figure 1).

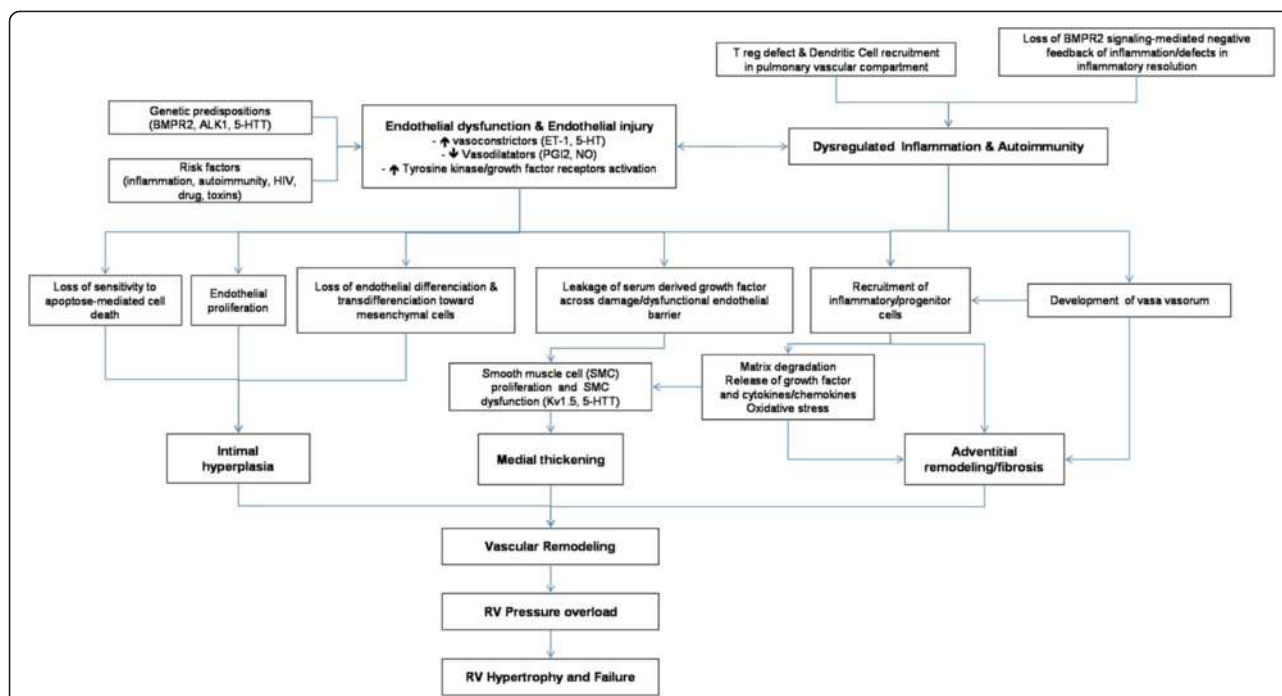
### Cellular factors

Proliferation of smooth muscular cells in the small peripheral pulmonary arteries is a common characteristic in all forms of PAH. In hypoxic models, fibroblasts of the adventitia migrate to the media and intima, where proliferation and production of matrix proteins are observed [138]. Neovascularization, mainly of the adventitia, occurs concomitantly to the thickening of the vascular walls [139].

In response to certain stimuli, endothelial cells abnormally proliferate to form plexiform lesions in several forms of PAH. Plexiform lesions consist of endothelial cells, matrix proteins and fibroblasts and obliterate the vascular lumen [140]. The stimuli for endothelial proliferation is still unknown but several factors have been incriminated such as hypoxia, inflammation, shear stress, drugs, viral infections and genetic susceptibility. Extrapulmonary cells may also participate in the vascular remodeling responsible for PAH. Indeed, fibrocytes and c-kit+ cells are mobilized from the bone marrow, and may differentiate into vascular cells and/or produce pro-angiogenic factors to participate in the pathogenesis of PAH [141,142]. The CXCL12/CXCR4 axis may play an important role in the pulmonary recruitment of these circulating progenitors and can be therapeutically targeted [143].

Inflammatory mechanisms seem to play an important role in certain forms of PAH such as PAH associated with autoimmune diseases or HIV infection [144]. In fact, in severe cases of PAH associated with systemic lupus erythematosus disease, some patients improved both clinically and hemodynamically with immunosuppressant treatment. Thirty to 40% of patients with PAH have circulating auto-antibodies and elevated plasma concentrations of pro-inflammatory cytokines such as interleukin 1 (IL-1) and interleukin-6 (IL-6), and chemokines such as fractalkine and MCP-1 [145,146]. Inflammatory cells, such as lymphocytes B and T, macrophages, mastocytes and dendritic cells, can also be found in plexiform lesions of severe PAH [147,148]. Chemokines, like RANTES and fractalkine are also overexpressed in the pulmonary vascular endothelium of PAH patients [145].

Thrombosis and platelet dysfunction can be important in the development of PAH. Abnormalities of thrombosis, endothelial cells or platelets can generate or aggravate thrombosis in situ. Elevated plasma concentrations of D-dimers and fibrinopeptides A and B, in certain



**Figure 1 Pathophysiology of PAH.** The pulmonary vascular remodeling responsible for PAH is the consequence of closely intertwined predisposing and acquired factors. Those pathological elements affect all three layers of precapillary pulmonary arteries leading to intimal hyperplasia, medial thickening and adventitial remodeling/fibrosis. Intra- but also extra-pulmonary cells, such as inflammatory and progenitor cells, are suspected to play a role in this remodeling. This increases right ventricular afterload and consequently results in right ventricular failure.

patients with PAH, are the proof of an abnormal intravascular coagulation process. Elevated plasma concentrations of von-Willebrand factor and plasminogen activator inhibitor type 1 also reflect endothelial dysfunction in PAH. It has been demonstrated that shear stress creates pro-thrombotic vascular lesions in PAH that may lead to thrombosis in situ. But platelet function is not limited to coagulation. In response to certain stimuli, platelets can produce prothrombotic, vasoactive or mitogenic factors, such as thromboxane A2 (TXA2), platelet-derived growth factor (PDGF), serotonin (5-hydroxytryptamine, 5-HT), transforming growth factor beta (TGF- $\beta$ ) and vascular endothelial growth factor (VEGF) that participate in vasoconstriction and vascular remodeling [149,150].

### Autoimmunity and PAH

The self-tolerance is controlled in the periphery by a particular population of T-lymphocytes called regulatory T-lymphocytes (Treg). The breakdown of self-tolerance can lead to the development of an autoimmune response (i.e. directed against self antigens) that can finally give rise to an autoimmune disease. Huertas et al. [151] showed that circulating Treg number was comparable in idiopathic PAH and SSc-PAH patients. However the percentage of those expressing leptin receptors was higher in idiopathic PAH and SSc-PAH as compared to

controls, and their function was reduced in idiopathic PAH and SSc-PAH patients as compared to controls in a leptin-dependent manner [151]. Work on chronic inflammatory disorders and autoimmune diseases suggest that pathogenic antibodies and T cells may be generated locally, in the targeted organ, in highly organized ectopic lymphoid follicles commonly called tertiary lymphoid tissues. Recently, Perros et al. [152] described the presence of highly organized perivascular follicles in idiopathic PAH lungs arguing for specific immune-adaptive mechanisms in the pathophysiology of the disease. One can propose that deregulated and unresolved pulmonary inflammation on the background of a genetic predisposition, could result in persisting vascular remodelling leading to PAH. An initial acute inflammation that is normally expected to resolve with return to homeostasis, could conduct the production of auto-antibodies against vascular wall components, and would shift to chronic persisting and chronic inflammation, endothelial barrier breakdown, infiltration by immune cells, local and chronic autoimmunity, and vascular remodeling culminating in PAH.

### Molecular factors

Many authors consider pulmonary vasoconstriction as an early event in the process of PAH. Vasoconstriction has been associated with an abnormal function or

expression of potassium channels and with endothelial dysfunction [107]. Endothelial dysfunction results in a decreased production of vasodilators such as nitric oxide (NO) and prostacyclin and an increased production of vasoconstrictors such as endothelin-1 [153].

Prostacyclin (prostaglandin I<sub>2</sub>) is a potent pulmonary vasodilator that acts via the cyclic adenosine monophosphate (cAMP) pathway. It inhibits the proliferation of smooth muscle cells and decreases platelet aggregation. Production of prostacyclin is reduced in endothelial cells of patients with PAH [154]. PAH therapy based on prostacyclin and its derivatives have proven efficacy both hemodynamically and in clinical trials. NO is also a pulmonary vasodilator which acts via the cyclic guanosine monophosphate (cGMP) pathway. To increase pulmonary vasodilatation dependant on NO, a recent therapeutic strategy has targeted type 5 phosphodiesterase which degrades cGMP. Sildenafil or tadalafil, type 5 phosphodiesterase inhibitors, have proven their efficacy in patients with PAH [155]. Vasoactive intestinal peptide (VIP) is a neurotransmitter that has systemic and pulmonary vasodilator properties. It also inhibits smooth cell proliferation and decreases platelet aggregation and acts via the activation of the cAMP and cGMP systems [156]. Low plasmatic concentrations of VIP have been measured in pulmonary arteries of patients with PAH.

Endothelin-1 (ET-1) is an endothelially-derived peptide that has two receptor subtypes, designated as endothelin A (ETRA) and endothelin B (ETB), located on smooth muscle cells of pulmonary arteries. By ligating the ETRA, ET-1 intracellular calcium concentrations increase and activates the protein kinase C pathway [157]. ET-1 is a potent pulmonary vasoconstrictor and stimulates mitosis of arterial smooth muscle cells, thus contributing to pulmonary vascular remodeling. Pulmonary and plasma levels of ET-1 are elevated in human PAH and in experimental animal models of PAH [158]. The therapeutic efficacy of endothelin receptor antagonists (Ambrisentan, Bosentan) has been demonstrated in clinical trials in the pathophysiology of PAH.

In hypoxic models of PAH, hypoxia inhibits one or several voltage dependant potassium channels of the pulmonary arterial smooth muscle cells. This leads to membrane depolarization and opening of voltage dependant calcium channels with a subsequent increase of the intracellular calcium concentration and cellular contraction. Certain potassium channels are under expressed in pulmonary artery smooth muscle cells of patients with PAH [159,160]. It is still unknown whether abnormalities of the potassium channels are acquired or genetic. However, it has been demonstrated that anorexigens, such as dexfenfluramine and aminorex, directly inhibit certain potassium channel subtypes [161].

Certain medications such as dichloroacetate and sildenafil increase the expression and function of potassium channels.

In PAH, plasmatic concentrations of serotonin (5-hydroxytryptamine, 5-HT) are elevated [150]. An association between anorexigens and serotonin was established in the 1960s. Aminorex and fenfluramin both increase plasmatic levels of serotonin. The variability of the expression and activity of the transporter of 5-HT (5-HTT) contributes to pulmonary vascular remodeling in human and experimental models of PAH [162]. Some studies have shown that the serotonin selective reuptake inhibitor fluoxetine prevents the development of PAH in mice [163]. Some 5-HT receptor subtypes may also be implicated in the development of hypoxia induced PAH [164].

Rho proteins regulate fundamental cellular functions such as contraction, migration, proliferation and apoptosis. Several studies have implicated Rho protein A and Rho kinases in the vasoconstriction and vascular remodeling of PAH [165,166]. RhoA and Rho kinase activities are increased in idiopathic PAH, in association with enhanced RhoA serotonylation. Direct involvement of the 5-HTT/RhoA/Rho kinase signaling pathway in 5-HTT-mediated pulmonary artery-smooth muscle cell (PASMC) proliferation and platelet activation during PH progression identify RhoA/Rho kinase signaling as a promising target for new treatments against PH [167].

Hypoxia inducible factor-1 (HIF-1) is a transcription factor that principally regulates cellular adaptation to hypoxia but also regulates several genes implicated in angiogenesis, erythropoiesis, cellular metabolism and survival [168]. In experimental mice heterozygote for the gene coding for HIF-1 alpha, hypoxia induced right ventricular hypertrophy, right ventricular pressure and medial thickening of pulmonary arterioles are reduced [169]. In immunohistological analysis of human plexiform lesions of patients with severe PAH, there was an overexpression of HIF-1 alpha in proliferating endothelial cells [170].

In conclusion, the pathophysiology of PAH is heterogeneous and multifactorial. The genetic mutations found in familial PAH and in a proportion of sporadic PAH are neither necessary nor sufficient for the development of PAH. Therefore, the current hypothesis is that of a genetic predisposition for PAH followed by a superimposed environmental factor (infection, inflammation, autoimmunity). Our understanding of the underlying pathophysiological mechanisms of PAH has lead to the development of new treatments such as prostacyclin analogues, endothelin receptor antagonists and type 5 phosphodiesterase inhibitors. However, future progress is still necessary in order to discover new pathophysiological pathways and to develop new therapeutic strategies in PAH.

## **Histopathology: vascular changes**

Vascular remodelling in pulmonary arterial and venous hypertension typically involves the small pulmonary vessels. Muscular arteries of less than 500  $\mu\text{m}$  display a thickening within the intimal, medial and adventitial compartment. When involved, pulmonary veins of the interlobular septa and smallest preseptal venules show fibrous obliteration and / or muscularization. Even the smallest vascular level may be involved: patients with pulmonary venous hypertension frequently present focal proliferation of alveolar capillaries. The different histological pattern is presented here below.

### **Arterial lesions**

#### ***Isolated medial hypertrophy***

This abnormality of the vessel wall can be observed in all subgroups of PAH and may even be encountered in other forms of PH, e.g. in mitral valve stenosis. The lesion corresponds to a smooth muscle cell proliferation and / or recruitment within the tunica media; the histological criterion of hypertrophy / hyperplasia is fulfilled, when the diameter of a single medial layer, delimited by its internal and external elastic lamina, exceeds 10 per cent of the arteries cross-sectional diameter (Figure 2A). Isolated hypertrophy of the medial layer may be considered as an early and even reversible event as it has been shown in PH due to hypoxia in high altitude [171]. However, medial hypertrophy is usually associated with other PAH-lesions.

#### ***Concentric and eccentric non-laminar intimal fibrosis***

Fibrotic lesions of the intimal layer are frequent in PAH-diseased lungs. The intima may be thickened by proliferation and recruitment of fibroblasts, myofibroblasts and other connective tissue cells, and consequently by the interstitial deposition of collagen (Figure 2B, C). In a purely descriptive approach, this thickening may be uniform and concentric, or focally predominating and eccentric. However, the eccentric intimal thickening is frequently observed in cases with thrombotic events and could represent residues of wall-adherent, organized thrombi. Thrombotic lesions, or so called in situ thrombosis, are a frequent pattern in different PAH-subgroups: organization and recanalization of totally occluding thrombotic material may lead to bizarre, fibrotic multi-channel lesions (so called “colander-like” lesions) which can be easily confounded with proliferative complex lesions (see below) (Figure 2D). Frequently, adventitial fibrosis is associated to intimal modifications (Figure 2A, B).

#### ***Concentric laminar intimal fibrosis***

This morphologically conspicuous phenotype of intimal fibrosis is also known as “onion-skin” or “onion-bulb” lesion. Numerous concentrically arranged fibrotic layers

occlude the arterial lumen of small (diameter: 100–200  $\mu\text{m}$ ) arteries (Figure 2E). The scary, cell-lacking morphology of this lesion is frequently found in patients suffering from idiopathic PAH and PAH associated to CTD [172]. Nevertheless, immunohistochemical analysis reveals fibroblasts, myofibroblasts and smooth muscle cells.

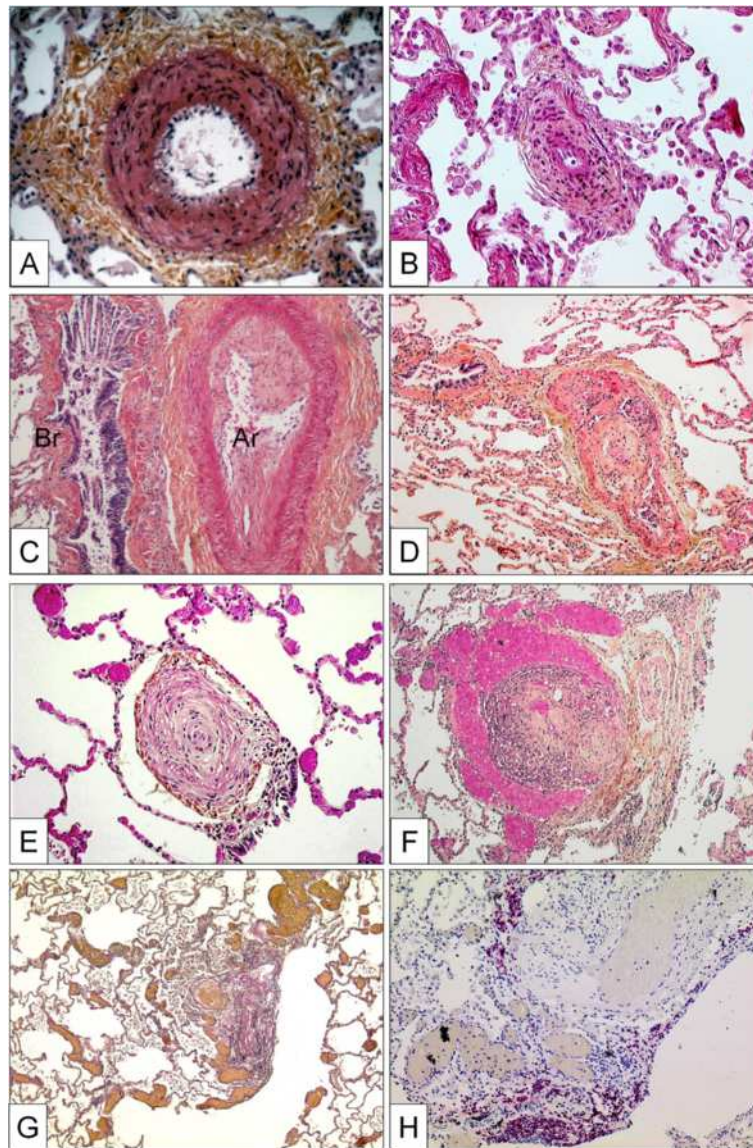
### **Complex lesions**

The pathological classification of the World Symposium meetings in Venice and in Dana Point comprises three patterns, plexiform lesion, dilation lesion and arteritis. The plexiform lesion probably represents the most illustrious form of vascular lesions in PAH and affects various vascular compartments: focal intimal thickening of small pulmonary arteries, preferably beyond branching points and exuberant endothelial cell proliferation, leading to the formation of capillary-like, sinusoidal channels on a smooth muscle cell and collagen-rich matrix within the native arterial lumen and resulting in obstruction [173,174]. This glomeruloid-like arterial zone feeds into dilated, vein-like congestive vessels, which are perceivable at low magnification (Figure 2F). The latter vein-like vessels are also known as dilation lesions and may predominate the histological pattern (Figure 2G). Classical arteritis with transmural inflammation and fibrinoid necrosis, as first described by Heath and Edwards for PAH associated to congenital cardiac disease (Eisenmenger), is not a regular finding in PAH [175]. Nevertheless, perivascular inflammatory infiltrates of diseased pulmonary arteries in PAH-patients, consisting mainly of T- and B-lymphocytes, dendritic cells, mast-cells and macrophages can be regularly found [141,148,176] (Figure 2H). It has not been elucidated until now, whether this inflammatory pattern is of pathogenetic importance, or if it represents a pure epiphenomenon within disease evolution. The reported evidence of proinflammatory mediators, so called chemokines, released by altered endothelial cells of PAH-lungs strongly indicates a self-supporting and self-amplifying process [145,177].

### ***Venous and venular lesions (Pulmonary veno-occlusive disease and pulmonary hemangiomatosis)***

A clear-cut differentiation between pre- and post-capillary pulmonary vascular lesions is sometimes difficult to make: lesions frequently concern veins and arteries in lungs of patients with PVOD, and vice-versa veins may be strongly involved in some subgroups of PAH. This is not contradictory because the clinical approach to ‘difficult-to-treat’ PAH-groups may be similar to clinical management of PVOD and PVOD-patients are frequently treated – under great precaution – with pulmonary arterial dilators, e.g. prostanoids. Recent reports, for example, indicate that





**Figure 2** Pulmonary arteries of the muscular type displaying obstructive arteriopathy in lungs of patients with PAH. **A** Medial hypertrophy with smooth muscle cell proliferation and pronounced adventitial fibrosis. Magnification x200, Weigert-hematoxylin-phloxine-saffron staining (WHPS). **B** Concentric non-laminar intimal fibrosis comprising numerous myofibroblasts (arrows). **C** Eccentric intimal fibrosis corresponding to organized thrombotic material. Br: bronchus, Ar: pulmonary artery. Magnification x100, HES staining. **D** Thrombotic lesion, so called "colander-like lesion", with partial recanalization by microvessels. Note the similarity to plexiform lesions (F). Magnification x100, HES. **E** Concentric laminar intimal fibrosis, so called „onion-skin lesion“. Magnification x 200, HES. **F** Plexiform lesion with proliferation of small sinusoid-like vessels on a fibrotic matrix. Note surrounding dilated vessels. Magnification x100, HES. **G** Multiple dilation lesions being the sentinel of the centrally located plexiform lesion. Magnification x 40, Elastica-van-Gieson staining (EvG). **H** The same plexiform lesion after immunohistochemical staining with anti-CD3, a T-lymphocytic marker. Note the perivascular distribution of the inflammatory infiltrate. Magnification x100.

CTD associated PAH, classically being considered as pre-capillary PH, simultaneously displays a PVOD-like pattern in histology [178,179]. Like in PVOD, the observed post-capillary lesions concern septal veins and pre-septal venules and usually consist of a loose and pauci-cellular and cushion-like intimal fibrosis that may totally occlude the lumen. A muscularization of both, septal veins and pre-septal venules may be observed (Figure 3A, B).

Importantly, occult pulmonary hemorrhage regularly occurs in patients displaying PVOD. This particularity, which is certainly due to the post-capillary bloc, is of diagnostic importance, as bronchio-alveolar lavage can reveal an occult hemorrhage. The degree of hemorrhage can be evaluated semi-quantitatively and qualitatively using the Golde Score, which takes number and Perls-Prussian-Blue staining-degree of intra-alveolar siderophages into

consideration (Figure 3C) [180]. Pulmonary capillary hemangiomatosis has been historically described as an aggressive capillary proliferation with patchy distribution within the pulmonary parenchyma: alveolar septa are thickened by 3 to 4 capillary layers, and infiltration of venous and bronchiolar structures with secondary occlusion may be present (Figure 3D). It is thought, that a clinically relevant post-capillary bloc is owed to this angiomatoid expansion. Occult hemorrhage or hemosiderosis, therefore, is frequently found [181]. However, Lantuejoul and co-workers have shown in a remarkable retrospective histological analysis, that capillary hemangiomatosis-pattern is virtually always present in PVOD, and vein-remodelling is constantly observed in case with a primary diagnosis of PCH [54]. The authors suggest the possibility, that PVOD and PCH might be the same disease, with a vein- or a capillary-predominating pattern. We fully support this view, and in our experience from the French National PH Reference Center, no clinical distinction is made between both conditions.

## Clinical description

### Symptoms and clinical signs of PH

There is no pathognomonic clinical sign of PH. Clinical presentation is related either to right heart failure or to associated diseases. Persistent dyspnea on exertion is the most frequent symptom; and it is present in almost patients even in the presence of mild hemodynamic abnormalities [1,182]. Dyspnea usually starts insiduously and is often neglected by patients which explain the delay of around two years in establishing the diagnosis of PH. The New York Heart Association (NYHA) provides a classification system for the clinical evaluation of dyspnoea. Four categories are proposed to classify patients in functional classes (FC) based on how much they are limited during physical activity; the limitations/symptoms are in regard to normal breathing (Table 3).

However, at time of diagnosis, 70% of patients are in NYHA FC III or IV. Chest pain, light-headedness and syncope may occur, particularly during physical efforts and are major signs of disease severity. Palpitations are frequent during physical efforts and may reveal true cardiac arrhythmias. Other symptoms of PAH include fatigue and weakness. Hemoptysis may complicate PAH and could be life-threatening, justifying embolization of dilated bronchial arteries. Hoarseness of the voice may occasionally be noted and is due to compression of the left laryngeal nerve by the dilated pulmonary artery (Ortner's syndrome).

Signs of right heart failure may be observed in the most severe patients, including venous jugular distension, hepato-jugular reflux, hepatomegaly and hepatalgia. Lower limb edema, ascitis and generalized edema underscore the severity of right heart failure. Cardiac

auscultation shows usually a prominent pulmonary component of S2, a systolic murmur of tricuspid regurgitation and more rarely a diastolic murmur of pulmonary regurgitation. Pulmonary auscultation is usually normal and contrasts with the importance of dyspnea. History and clinical examination should also screen for manifestations of extra thoracic diseases, particularly Raynaud's syndrome which can be found in PAH associated with CTD and particularly in systemic sclerosis.

### Diagnostic methods

The diagnostic process of PAH requires a series of investigations that are intended to make the diagnosis, to clarify the clinical class of PH and the underlying type of PAH and to evaluate the functional and hemodynamic impairment [183]. The detection of PH requires investigations including electrocardiogram, chest radiograph and trans-thoracic echocardiogram. Other conditions which can induce PH will be identified by tests such as pulmonary function tests, arterial blood gases, ventilation and perfusion lung scan, high resolution computed tomography (HR-CT) of the chest and pulmonary angiography. Additional investigations are required for evaluation of PAH severity including exercise testing and hemodynamics. Additional imaging may clarify underlying lung abnormalities. Finally, right heart catheterisation confirms the definite diagnosis.

### Electrocardiogram (ECG)

The ECG may provide suggestive or supportive evidence of PH by demonstrating right ventricular hypertrophy and strain, and right atrial dilation. Right ventricular hypertrophy and right axis deviation are present in respectively 87% and 79% of patients with idiopathic PAH [105]. Unfortunately, the ECG has low sensitivity and specificity as a screening tool for detecting PH.

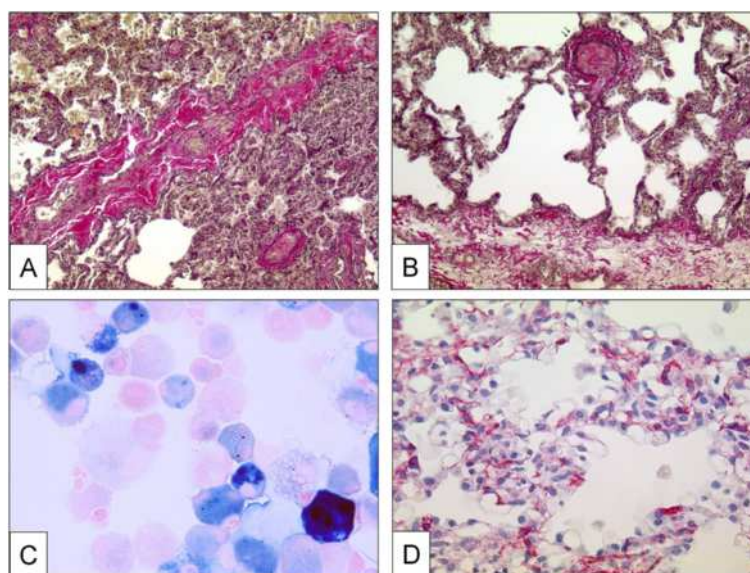
### Chest radiography

In 90% of idiopathic PAH patients, chest radiography is abnormal at the time of diagnosis [105]. Findings include central pulmonary arterial dilatation which contrasts with loss of the peripheral blood vessels. Right atrial and ventricular enlargement may be seen in more advanced cases. Chest radiography may help to identify associated moderate-to-severe lung disease or pulmonary venous hypertension due to left heart abnormalities.

### Pulmonary function test and arterial blood gases

Pulmonary function tests (PFT) will help to assess underlying lung abnormalities. Forced expiratory volume in one second (FEV1) and total lung capacity (TLC) in idiopathic PAH are usually normal or slightly abnormal. Low diffusing capacity of the lung for carbon monoxide (DLCO) has been reported in PAH patients, but is more pronounced in PVOD patients with often severe reductions under 50% of





**Figure 3 Pulmonary veins with obstructive venopathy in lungs of patients with PVOD and a case of pulmonary capillary hemangiomatosis. A** Longitudinally dissected septal vein with asymmetric intimal and partially occlusive fibrosis. Note the intra-alveolar hemorrhage due to the post-capillary block on the upper half of the photograph. Magnification  $\times 100$ , EvG. **B** Pre-septal venule with occlusive intimal fibrosis. Magnification  $\times 100$ , EvG. **C** Bronchio-alveolar lavage in a PVOD-patient. Perls-Prussian-Blue staining. Note the siderophages displaying gradually different color-shades (see text). Magnification  $\times 400$ . **D** Excessively proliferating alveolar capillaries in a patient with pulmonary capillary hemangiomatosis. Note protrusion of ectatic lumina into the alveoli. Magnification  $\times 200$ , anti-CD31 staining.

the predicted value [56,184]. Results of arterial blood gases usually show mild hypoxemia and hypocapnia. Severe hypoxemia may be a parameter of underlying PVOD or chronic lung disease.

#### Exercise testing

The normal physiologic response of the pulmonary vasculature to exercise consists of distension of pulmonary arteries and arterioles as well as recruitment of previously unused vascular bed. Thus, in health, pulmonary artery pressure rises minimally in response to increased blood flow and pulmonary vascular resistance decreases because of the remodeled vasculature. These mechanisms are impaired in the course of PH. Cardiopulmonary exercise testing (CPET) has been shown to be useful in assessing the severity and prognosis of PAH [15,185]. Several mechanisms are associated: (1) failure to perfuse the ventilated lung, leading to an increase of physiologic dead space and ventilatory requirement; (2) failure to increase cardiac output appropriately in response to exercise, causing an early lactic acidosis, thereby increasing acid ventilatory drive; and (3) exercise-induced hypoxemia increasing the hypoxic ventilatory drive. The ventilatory expired gas abnormalities precipitated by PH are multifactorial and associated with disease severity. CPET assesses and measure the ventilation-perfusion mismatch (i.e. acceptable ventilation/diminished perfusion), reflected by an elevated  $VD/VT$  or  $VE/VCO_2$  ratio or slope and diminished partial pressure

of end-tidal carbon dioxide ( $PETCO_2$ ), and the decreased peak  $VO_2$  and  $VO_2$  at the ventilatory threshold (VT). Peak  $VO_2$ ,  $VE/VCO_2$  ratio or slope or  $PETCO_2$ , measure during CPET, all demonstrated independent and strong prognostic value as univariate markers [186].

#### Transthoracic doppler-echocardiography (TTE)

TTE is a non-invasive screening test for patients with suspected PH. TTE estimates pulmonary artery systolic pressure (sPAP) and may provide additional information about the cause and consequences of PH. The estimation of PAP is based on the peak velocity of the jet of tricuspid regurgitation. The simplified Bernoulli equation describes the relationship of tricuspid regurgitation velocity and the peak pressure gradient of tricuspid regurgitation =  $4 \times$  (tricuspid regurgitation velocity). Estimation of PA systolic pressure require to take into account right atrial pressure (PA systolic pressure = tricuspid regurgitation pressure gradient + estimated right atrial pressure). Right atrial pressure cannot be measured and is estimated based on the diameter and respiratory variation of the inferior vena cava [15]. An alternative approach to echocardiographic diagnosis of PH is based on the comparison of tricuspid regurgitation velocity with values reported in a healthy population. Ideally, the influence of age, sex and body mass should be taken into consideration [187]. This method avoids cumulative error but is less directly linked to the accepted hemodynamic definition of PH based on mPAP [15].

Other echocardiographic variables that might raise or reinforce suspicion of PH independently of tricuspid regurgitation velocity should always be considered. They include an increased velocity of pulmonary valve regurgitation and a short acceleration time of RV ejection into the PA. Increased dimensions of right heart chambers, abnormal shape and function of the interventricular septum, increased RV wall thickness, pericardial effusion and dilated main PA are also suggestive of PH, but these signs are considered to be related to the hemodynamic severity [15].

Besides identification of PH, TTE also allows a differential diagnosis of the possible causes of pulmonary hypertension. TTE can recognize left heart valvular diseases and myocardial diseases responsible for post-capillary PH, and congenital heart diseases with systemic-to-pulmonary shunts. The venous injection of agitated saline can help to identify patent foramen ovale or small sinus venosus type atrial septal defects. Transesophageal echocardiography is rarely required in the setting of PH.

#### **Ventilation/perfusion lung scan**

Ventilation/perfusion lung scan should be systematically assessed to screen for CTEPH. Indeed, V/Q lung scan is the method of choice to detect CTEPH [188] and normal V/Q scan can eliminate CTEPH.

#### **High resolution computed tomography of the chest**

High resolution computed tomography of the chest (HRCT) supplies detailed information about underlying lung parenchyma disease, such as pulmonary emphysema or interstitial lung disease. A number of various pathologic features may be detected on chest HRCT including pericardial effusions and pulmonary artery enlargement, defined by the ratio of the diameter of main pulmonary artery to that of the thoracic aorta  $>1$ . In the setting of CTEPH, contrast HRCT of the pulmonary arteries may show changes like complete vessel obstruction, vessel cut-offs, intimal irregularities, incorporated thrombus formations as well as bands and webs [189]. Furthermore, collaterals from bronchial arteries can be identified with this technique. Proximal pulmonary obstruction is displaying about significant and accessible organized fibrous tissue in segmental or subsegmental arteries. If no proximal obstruction or obliteration is noted; lesions are considered to be distal, non-accessible to surgery intervention. In some cases, pulmonary angiography is necessary to differentiate between proximal or distal obstructions. Chest HRCT may also suggest PVOD in the presence of adenopathy mediastinal, ground glass opacities and septal lines [53].

#### **Pulmonary angiography**

In CTEPH, pulmonary angiography may be helpful to determinate surgically accessible form. Typical angiographic findings in CTEPH are complete obstruction, band and webs as well as intimal irregularities [74]. Pulmonary angiography may be also helpful in the setting of fibrosing mediastinitis.

#### **Cardiac magnetic resonance imaging**

Cardiac magnetic resonance imaging (MRI) allows non invasive evaluation of right ventricular size, morphology and shape. It provides information on right ventricular function and allows non-invasive assessment of blood flow including cardiac output, stroke volume, distensibility of pulmonary artery and right ventricular mass [190,191]. Decreased stroke volume, an increased right ventricular right ventricular end-diastolic volume and a decreased measured at baseline are associated with poor prognosis of disease [192,193]. In addition, it has been demonstrated that deterioration of these parameters at one-year follow-up were also predictors of mortality [193]. Thus cardiac MRI could represent a non-invasive tool to evaluate severity of PAH patients at baseline and during follow-up. Further studies are needed to evaluate the precise place of cardiac MRI in the management of PAH patients.

#### **Abdominal ultrasound scan**

Abdominal ultrasound should be performed in all patients if PH is suspected to exclude portal hypertension or liver disease. When portal hypertension is suspected, the diagnosis can be confirmed during RHC by measurement of an increased gradient between the free and occluded hepatic vein pressure [194].

#### **Blood tests**

Serological tests for HIV, hepatitis B or C serology should be performed to screen for associated diseases. The thyroid hormone measurement may reveal either hyperthyroid dysfunction or autoimmune thyroiditis, frequently encountered in PAH.

#### **Right heart catheterization**

Invasive hemodynamic assessment with right heart catheterization is requested to confirm the diagnosis of PH showing a resting mPAP of  $\geq 25$  mmHg and a normal PCWP [2]. This value has been used for selecting patients in all RCTs and registries of PAH, however normal mPAP at rest is around of 14 mmHg, with an upper limit of normal of 20 mm Hg. The significance of a mean PAP between 21 and 24 mmHg is currently unclear. No definition of PH on exercise was currently adopted, because of the large variability of mPAP on exercise in healthy individuals.



The assessment of PCWP may allow the distinction between precapillary (normal PCWP  $\leq 15$  mmHg) and postcapillary PH (PCWP  $> 15$  mm Hg). In post-capillary PH, the last guidelines from the 4th World Symposium (Dana Point) proposed a dichotomy between "passive" and "reactive" (out-of-proportion) post-capillary PH based on transpulmonary pressure gradient (mPAP-PCWP, respectively  $\leq$  or  $> 12$  mm Hg). Indeed, there is no clear consensus on this definition and the future recommendations arising from the last World Symposium on PH (Nice, 2013) should propose new definition to define these two entities.

Measurement values obtained by RHC are PAP (diastolic, mean and systolic), right atrial pressure (RAP), PCWP, right ventricular pressure and cardiac output (CO) preferably by the thermodilution method. In contrast to the thermodilution method, the Fick method is mandatory in patients with suspected CHD. In experienced centres, RHC procedures have low morbidity and mortality rates [195]. Elevated mean right atrial pressure reduced CO and mixed venous oxygen saturation (SVO<sub>2</sub>) are related to the prognosis of PAH patients.

#### **Assessment of disease severity**

NYHA functional class at baseline or after initiation of epoprostenol treatment, signs of right heart failure, 6-MWD, peak VO<sub>2</sub>, echocardiographic parameters, hemodynamic parameters and biological tests (hyperuricemia, brain natriuretic peptide, troponin) predict prognosis in idiopathic PAH when assessed at baseline.

Patients presenting PVOD or PAH associated with CTD (frequently associated with venous involvement) have a worse prognosis than patients with idiopathic PAH [53]. Patients with PAH associated with congenital systemic to pulmonary shunts have a more slowly progressive course than idiopathic PAH patients. Few data are available in other conditions such as HIV infection or portal hypertension. In these circumstances, underlying diseases may contribute to the overall outcome. In clinical practice, the prognostic value of a single variable in the individual patient may be less significant than the value of multiple concordant variables.

A score has been proposed (REVEAL Registry Risk Score) to evaluate severity of newly diagnosed PAH patients [196]. This score was based on several parameters including subgroups of PAH, renal insufficiency, age  $> 60$  years, NYHA FC, systolic blood pressure, heart rate, 6-MWD, BNP, pericardial effusions, DLCO, RAP and PVR [196].

#### **Management of PAH**

##### **General measures**

##### **Physical activities**

Peripheral vasodilatation or increased cardiac demand will put PAH patient at risk of acute cardiac failure and

syncope. Thus, we traditionally advise against extreme physical activity. Patients are taught to stay active while adapting effort according to their symptoms. Nevertheless, the appropriate level of physical activity is difficult to define. To date, only few studies have evaluated the effect of cardio-respiratory rehabilitation in PAH. One of these programs involved three weeks of inpatient rehabilitation followed by three months of training at home with phone call supervision. No modification of cardiac hemodynamics was observed on echocardiography but 6-MWD and quality of life were improved. As proposed in ERS/ESC guidelines, more data are required before appropriate recommendations can be made [15].

##### **Altitude and hypoxia**

As hypoxic vasoconstriction may be an aggravating factor in PAH, stays at altitude above 1500-2000 meters without supplemented oxygen and air flight in unpressurized cabin should be avoided [15]. Chronic hypoxia (PaO<sub>2</sub>  $< 60$  mmHg) warrants oxygen therapy for symptoms and to avoid PAH deterioration.

##### **Pregnancy and contraception**

The hemodynamic and hormonal modifications occurring during pregnancy and peripartum period can lead to severe, and sometimes fatal, right heart failure [197,198]. Pregnancy is considered to be associated with a high rate of mortality (30-50%) in PAH patients [15]. Thus, pregnancy is contraindicated in women affected by PAH. Consequently, contraception is strongly recommended in PAH women of childbearing age [197,198]. Combined estrogen-progestin oral contraceptive is theoretically contraindicated because of their pro-thrombotic activity. Therefore, mechanical contraception (intra-uterine device for example) or surgical sterilization should be proposed. Nevertheless, pregnancy should be managed with specific PAH therapies and planned elective delivery in expert centres [15].

##### **Anaesthesia and surgery**

Hypotension induced by anaesthetic drugs, and hemodynamic insults following surgical and anaesthetic interventions are generally poorly tolerated by PAH patients, with a high procedural morbidity and mortality. Consequently, it is recommended in general that PAH patients avoid unnecessary procedures. When required, these should be highly planned with the multidisciplinary team, either within, or in close liaison with, the expert centers, in order to coordinate surgical and medical interventions [199].

##### **Proscribed drugs**

Vasoconstrictors used in cold medication to relieve nasal congestion should be avoided in PAH patients. Beta-

blockers have been shown to be deleterious to PAH patients because they prevent the important adaptive physiologic response that allows preservation of adequate cardiac output. To discontinue such drugs in a patient with PAH may lead, by itself, to important clinical and hemodynamic improvement [200].

#### **Non specific drugs**

##### **Diuretics**

Diuretics are one of the most important treatments in the setting of PAH because right heart failure leads to fluid retention, hepatic congestion, ascites and peripheral edema. Right ventricular overload is part of clinical symptoms and has been associated with a poor prognosis in PAH [201]. Diuretics and salt-free diet relieve hypervolemia and associated symptoms. Whether this strategy improves prognosis is unknown. Dose adjustment of diuretics is needed, based on clinical and hemodynamic findings. Renal function and blood chemistry should be monitored to avoid renal failure or dyskalemia [192].

##### **Oral anticoagulation**

Pathology specimens from PAH patients may show in situ thrombosis and thrombi recanalisation. Only few studies support anticoagulation treatment in PAH (mostly retrospective or not randomized) [202,203]. Current recommendations propose oral anticoagulation aiming for targeting an International Normalized Ratio (INR) between 1.5 and 2.5. Although the somewhat sparse evidence base is derived exclusively from idiopathic, heritable and PAH due to anorexigens, anticoagulation has been generalised to all patient groups, given the absence of contraindication. Anticoagulation is usually not recommended in porto-pulmonary hypertension because of the risk of esophageal variceal haemorrhage. In patients with systemic sclerosis, oral anticoagulation can be difficult to manage because of their high risk of bleeding, especially from the gastrointestinal tract. Variceal ligation is a preventive option in these cases. Long-term oral anticoagulation is essential in CTEPH with an INR which is recommended to be between 2 and 3.

##### **Digitalis**

Digoxin has been suggested as part of PAH therapy in the past because it produces an acute increase in cardiac output [204], although its efficacy is unknown in PAH. Therefore it is usually proposed in PAH associated with atrial tachyarrhythmias [192].

##### **Calcium channel blockers**

Calcium channel blockers (CCB) are indicated in patients with a positive vasodilatation challenge test after inhaled NO. CCB are vasodilators and were initially

introduced in the 1980's as part of PAH therapy to counteract vasoconstriction that has traditionally been assumed to be a preponderant mechanism in PAH. In the 1990's, Rich and colleagues showed in an open prospective study that high dose of calcium channel blockers (nifedipine 90 to 240 mg/day or diltiazem 360 to 900 mg/day) significantly improve prognosis in patients with an acute vasodilation response [203]. Sitbon et al. showed that only 12.6% out of the patients could be treated by CCB according to criteria's established by Rich and co-workers [203]. Moreover, only half of them maintained actual long-term benefit defined as NYHA FC I or II at one year without the need for additional treatment [205]. In this study, a decrease in mean PAP > 10 mmHg to reach a value < 40 mmHg, with a stable or increased cardiac output, during acute vasodilator test was predictive of long-term response to CCB. Contrarily, CCB must be avoided in the absence of acute vasoreactivity because of the risk of significantly reduced cardiac output and systemic blood pressure [205]. The choice of CCB is based upon the patient's heart rate; nifedipine and amlodipine were preferred in the presence of relative bradycardia and diltiazem in the presence of tachycardia. Doses of CCB used in this setting are relatively high, 120-240 mg of nifedipine, 240-270 mg for diltiazem, and up to 20 mg for amlodipine [15]. If the patient does not show a correct response (NYHA FC I or II with marked hemodynamic improvement), additional PAH specific therapy should be added. Of note, CCB is contraindicated in PVOD because of the high-risk of life threatening pulmonary edema, even in the presence of acute vasodilator response that can be observed in the same proportion as in idiopathic PAH [53].

##### **PAH-specific therapies**

Better understanding in pathophysiological mechanisms of PH over the past quarter of a century has led to the development of medical therapeutics, even though no cure for pulmonary arterial hypertension exists. Several specific therapeutic agents were developed for the medical management of PAH including prostanoids, endothelin receptor antagonists and phosphodiesterase type 5 inhibitors. Furthermore, emerging treatments such as tyrosine kinase inhibitors, soluble guanylate cyclase activators (riociguat) and prostacyclin receptor agonists (selexipag) are currently being evaluated in PAH.

##### **Prostanoids**

Endothelium-derived prostaglandin I<sub>2</sub> (PGI<sub>2</sub>), or prostacyclin, is an arachidonic acid produced by endothelial cells. Prostacyclin is a powerful systemic and pulmonary vasodilator and an inhibitor of platelet aggregation through the increase in intracellular cyclic adenosine monophosphate (cAMP) [206,207]. Moreover, prostacyclin plays an important role in antiproliferative, antithrombotic, antimitogenic

and immunomodulatory activity [208]. Prostanoids are a family of prostacyclin analogues available in intravenous, subcutaneous, or inhaled form.

**Epoprostenol** In the 1980s, intravenous epoprostenol was the first prostanoid evaluated in PAH [209]. As the half-life of epoprostenol is <5 minutes, it requires an indwelling central venous catheter which is connected to an infusion pump for continuous intravenous administration. Treatment with epoprostenol is complex, uncomfortable and expensive and cannot be considered as an ideal treatment despite its evident clinical benefit. Common side effects associated with treatment include headache, flushing, jaw pain and gastrointestinal disturbance [201,210]. The efficacy of continuous i.v. administration of epoprostenol has been tested in three unblinded RCTs in idiopathic PAH [207,211] and PAH associated with systemic sclerosis [212].

Barst and colleagues [183] showed improvement in exercise capacity with an increase in 6-MWD of 47 meters after 12 months of epoprostenol treatment in 81 patients with idiopathic PAH. Moreover, a significant improvement of survival was observed (no death at three months of treatment in the group with epoprostenol against 8 deaths in the group receiving conventional treatment including diuretics and anticoagulants [213]. Long-term persistence of efficacy has also been shown [201,214] in idiopathic PAH, as well as in other associated PAH [215,216] and in non operable CTEPH [217]. Long term effectiveness has never been evaluated prospectively but retrospective analysis comparing patients treated by intravenous epoprostenol with data from patients treated with conventional therapy find meaningful clinical benefit for patients in NYHA FC III or IV [201,214,218,219]. Functional class, hemodynamic parameters and long term survival were all improved in the group treated with i.v. epoprostenol.

Epoprostenol had initially been proposed as a bridging therapy for lung transplantation but it is currently regarded as the treatment of choice for patients in NYHA FC IV. If treatment with epoprostenol is necessary, it will be started at low dose of 2-4 ng/kg/min and is gradually increased to 10-16 ng/kg/min according to side effects [201]. Treatment interruption secondary to pump dysfunction or the rupture of the catheter, although rare, can induce serious adverse events [201]. Because of its route of administration, central venous catheter bloodstream infections can occur, and should be systematically searched in the context of unexplained clinical deterioration.

**Treprostinil** Due to complications related to the central venous catheter used for the i.v. administration of epoprostenol, other prostacyclin agonists have been developed. Treprostinil is a prostacyclin analogue which benefits

from a longer half-life of 58–83 minutes by subcutaneous administration [220]. It is delivered by a minipump similar to those used for insulin [221]. A multicenter randomized trial evaluated subcutaneous administered treprostinil versus placebo over three months in patients in NYHA functional class II-IV suffering from idiopathic PAH, PAH related to CHD with a shunt or PAH associated with CTD [221]. Patients treated with treprostinil increased 6-MWD and had benefits like quality of life, pulmonary hemodynamics and improvement of clinical symptoms. Unfortunately, local side-effects such as pain and inflammation at the injection site are present in the majority of patients treated with treprostinil which often lead to limitation of increasing dose or treatment cessation. Intravenous treprostinil is only licensed for the use in the USA and provides the advantage of less frequent need for drug reservoir replacement [220]. Inhaled treprostinil was examined in a placebo-controlled TRIUMPH-1 study [222], but results of this formulation were not convincing and this product is not yet licensed outside the USA.

**Inhaled Iloprost** Iloprost is a prostacyclin analogue administered by inhalation or the intravenous route. The pulmonary vasodilating effects of inhaled iloprost lasts nearly 45 minutes, therefore six to nine inhalations daily are needed, with each of them requiring approximately 30 minutes [223,224]. Common side effects of treatment were cough, flushing, jaw pain and headache [223]. In the AIR study [223] conducted in at 37 European pulmonary hypertension centers, study participants (idiopathic PAH, PAH associated to systemic sclerosis, anorexigen associated PAH or non operable CTEPH) in functional class III or IV were assessed during a three month period. Patients received a daily inhalation of 2.5 µg or 5.0 µg of iloprost 6 or 9 times a day or placebo. After 3 months of treatment, 17% of patients receiving iloprost reached the combined endpoint of improvement in functional class and 10% gain in 6-MWD as compared to 5% in the placebo group.

#### **Endothelin receptors antagonists**

Endothelin-1 (ET-1) is a potent vasoconstrictor and therefore plays an important role in the pathogenesis of PAH. In addition, it is responsible for smooth muscle cell proliferation [158]. Elevated ET-1 plasma levels are found in patients suffering from PAH and are correlated with poor prognosis. There are two existing isoforms of ET-1 receptors: endothelin A (ETRA) and endothelin B (ETRB). Activation of ETRA and ETRB on pulmonary artery smooth muscle cells induce proliferation and vasoconstriction, whereas activation of ETRB on pulmonary endothelial cells leads to release of NO and prostacyclin and participate to the clearance of circulating ET-1.

**Bosentan** Bosentan is an oral active dual ETRA and ETRB antagonist. Bosentan has been evaluated in PAH (idiopathic, associated with CTD, and Eisenmenger's syndrome) in five RCT's (Pilot, BREATHE-1, BREATHE-2, BREATHE-5, and EARLY) that have shown improvement in exercise capacity, functional class, haemodynamic, echocardiographic and Doppler variables, and time to clinical worsening [107,225-228]. The first placebo-controlled study included 32 patients affected by idiopathic PAH or scleroderma presenting with PAH showing significant exercise improvement with a gain of 76 meters after three months of treatment with bosentan as compared to placebo [225].

The BREATHE 1 study confirmed the efficacy of treatment with Bosentan in more than 200 assessed patients in NYHA functional class III or IV compared to placebo in a three month trial. After three months of treatment with bosentan, improvements in NYHA functional class were observed in 42% of patients receiving bosentan compared with 30% in the placebo arm. 6-MWD was improved overall to 44 meters in favor of bosentan. Furthermore, delayed time to clinical worsening was also noted as well as better results in dyspnea scores [226]. One accepted common side effect of treatment is increase in liver enzymes; this is why monthly monitoring of liver transaminases is mandatory in all patients receiving bosentan. Treatment is started at a dose of 62.5 mg twice a day and increased to the dose of 125 mg twice daily after one month of treatment.

Subsequently published data of treatment with bosentan suggested persistent improvements in pulmonary hemodynamics, exercise capacity and modified NYHA functional class and possibly survival rate of patients [229-231]. Results from the EARLY study (double-blind, randomised controlled 6 months trial) showed that the effect of the dual endothelin receptor antagonist bosentan in patients with mildly symptomatic PAH could be beneficial for PAH patients in NYHA functional class II [228].

**Ambrisentan** Ambrisentan is a selective ETA receptor antagonist administered once daily at a dose of 5 mg or 10 mg. Two large RCTs (ARIES I and II, i.e. Ambrisentan in Pulmonary Hypertension, Randomized, Double blind, Placebo-controlled Multicenter, Efficacy Studies I and II) have demonstrated efficacy on symptoms, haemodynamics and time to clinical worsening of patients with idiopathic PAH and associated to CTD and HIV infection [232]. An extension study of the ARIES study is the recently published ARIES-E study by Klinger and colleagues [233]. They followed patients for a mean period of 60 weeks in where patients underwent hemodynamic evaluation. The authors concluded that

treatment with ambrisentan leads to hemodynamic stability in PAH patients.

#### **Phosphodiesterase type-5 inhibitors**

NO is a potent pulmonary arteries SMC relaxant that disposed vasodilator activity through up-regulation of its associated down-stream signalling molecule, cyclic GMP (cGMP), metabolism of which is dependent on the activation of a number of PDEs [208]. Phosphodiesterase type 3, 4 and 5 are the three main types of this enzyme found in pulmonary artery contractive cells. PDE-5 is the most abundantly expressed isoform in pulmonary circulation which was confirmed by several experimental investigations showing a beneficial effect of PDE-5 inhibitors on vascular remodeling and vasodilatation [234,235].

**Sildenafil** Sildenafil is an oral PDE-5 inhibitor that is available in Europe since 2005 for PAH patients in functional class II-III whereas this drug is licensed in Canada and the USA for patients in functional class II-IV. Basis for the authorization of this drug in the setting of PAH was a large randomized, placebo-controlled trial in which different doses of sildenafil were assessed in 278 patients presenting with idiopathic PAH, PAH related to CTD or congenital systemic to pulmonary shunts surgically corrected. The majority of study patients were in functional class II-III. After three months of treatment, the mean placebo-adjusted changes in 6-MWD for 20 mg, 40 mg and 80 mg doses of sildenafil were 45 meters, 46 meters and 50 meters, respectively. Furthermore, significant hemodynamic and functional class improvements were noted in every sildenafil group as compared to placebo. Common side effects of treatment with sildenafil include headache, flushing and dyspepsia but no hepatic enzymes increase was noted as compared with endothelin receptor antagonists. Long term extension data from 222 patients who completed one year of sildenafil monotherapy with a dose of 80 mg three times daily showed encouraging results with a gain in 6-MWD, suggesting a durable treatment effect [236]. However, sildenafil approval in Europe is currently limited to 20 mg three times a day. No data is currently available on the long-term efficacy of this lower dosage.

**Tadalafil** Another PDE-5 inhibitor is tadalafil which was granted for use in patients with PAH in Europe and North America in 2009. Galiè and colleagues [237] assessed in the PHIRST trial 405 randomly assigned patients who were either treatment naïve or already receiving bosentan therapy to placebo or one of the several



proposed doses of tadalafil 2.5 mg or 10 mg or 20 mg or 40 mg once daily for a period of three months. At study completion, patients receiving tadalafil showed an overall mean placebo-correlated increase in 6-MWD of 33 meters [208]. Thus, this increase was dose-dependent, with only the 40 mg dose achieving the prespecified value for statistical significance for improvement. Data analysis of comparative hemodynamic data from 93 patients who underwent repeat RHC has significant reduction in mPAP and PVR under treatment with tadalafil. Barst and co-authors [238] underlined favourable effects with tadalafil 40 mg among patients receiving background bosentan, although improvements were less marked compared with treatment naïve cohort.

### Combination therapy

Another therapeutic option is to combine drugs with different mechanisms of action, in order to optimize clinical benefit while minimizing side effects. The two possible strategies for combination therapy are either to add a new medication to an ongoing treatment (sequential combination) or in first intention by starting from the beginning with a combination treatment. The BREATHE-2 trial compared the association of i.v. epoprostenol and oral bosentan with i.v. epoprostenol and placebo among 33 patients with severe PAH over a 12 weeks period [227]. Reduction in pulmonary vascular resistance was greater with combination therapy, although it did not reach statistical significance. Furthermore, no benefit could be shown on the 6-MWD with combination therapy compared to epoprostenol alone (+ 68 m and + 74 m, respectively). These results however may be related to the small number of patients and the short term follow up in the context of the addition of a treatment to a drug already known to bring an important benefit in severe PAH patients. In a recent controlled trial, the sequential addition of oral sildenafil 80 mg three times daily for patients already receiving i.v. epoprostenol with insufficient improvement, proved to be more effective than the placebo on the 6-MWD and hemodynamic parameters. Indeed, there was a significant reduction in the number of patients showing clinical worsening and an improvement of survival among most severe patients [239]. There is currently no data on the addition of bosentan in such context. The combination of iloprost to bosentan in patients with idiopathic PAH or associated PAH in NYHA functional class III was shown to be significantly better than placebo and bosentan in terms of 6-MWD (+ 26 m), NYHA functional class and on post inhalation hemodynamic parameters (PVR -26.4%) [240].

Several uncontrolled studies evaluated the efficacy of other associations with encouraging results. The open-

label sequential addition of bosentan or sildenafil to epoprostenol, treprostinil or iloprost was shown to be of interest [241-243]. Also, the association of ERA and PDE5, both available in oral form, offers an interesting option [244,245]. Currently, the limited data precludes consensus on which combined treatment or strategy should be preferred. Also, no long term evaluation of combination therapy is available.

The best strategy of combination therapy should be discussed in the next world symposium of Pulmonary Hypertension. Current ERS/ESC guidelines propose sequential combination therapy without any recommendation regarding the best way to associate available specific PAH therapies.

### Potential future therapies

#### *Macitentan*

Macitentan, also called ACT-064992, is a novel, highly potent, tissue-targeting dual ET-1 receptor antagonist characterized by a high lipophilicity [247]. Macitentan has been tested in the largest, long-term, event-driven randomized, controlled study (SERAPHIN, *Study with an Endothelin Receptor Antagonist in Pulmonary arterial Hypertension to Improve clinical outcome*) [246]. The Seraphin study was designed to evaluate the efficacy and safety of macitentan through the primary endpoint of time to first morbidity and all-cause mortality event in 742 patients with symptomatic PAH. Patients were treated for up to three and a half years.

Macitentan has met its primary endpoint, decreasing the risk of a morbidity/mortality event over the treatment period versus placebo. Secondary efficacy endpoints, including change from baseline to month six in 6-MWD, change from baseline to month six in NYHA FC and time - over the whole treatment period - to either death due to PAH or hospitalization due to PAH, also showed a dose-dependent effect. Treatment with macitentan in this study was well tolerated; headache, nausea and vomiting were reported as minor adverse events [248]. The safety set comprised 741 patients, who received at least one dose of study treatment (placebo, 3 mg or 10 mg). The number of adverse events reported and patients discontinuing treatment due to adverse events was similar across all groups. Similar elevations of liver aminotransferases greater than three times the upper limit of normal were observed in all groups. In addition, no difference was observed between macitentan and placebo in terms of fluid retention (edema). A decrease in hemoglobin - reported as an adverse event - was observed more frequently on macitentan than placebo, with no difference in treatment discontinuation between groups.

#### *Vardenafil*

Vardenafil is another PDE5 inhibitor. Recently published data from a prospective, randomised study including 66

patients with PAH suggests improvement in 6-MWD and hemodynamic parameters after 3 months of treatment with vardenafil as compared to placebo. Side effects are not reported and proposed dosage is 5 mg twice daily [249]. However, further studies are needed.

### **Riociguat**

Endothelium-derived NO regulates vascular homeostasis through pulmonary arteries SMC relaxation *via* the activation of the second messenger cGMP. The clinical benefits associated with the PDE-5 inhibitor class has led to interest in testing whether other agents that modulate NO signaling might be similarly beneficial in PAH. Riociguat is a first-in-class drug that augments cGMP biosynthesis through direct stimulation of the enzyme soluble guanylate cyclase (sGC) promoting vasodilatation by direct stimulation of sGC in an NO-independent fashion, and by sensitization of sGC to low endogenous NO levels [250].

A phase I randomized placebo-controlled study in 58 healthy male subjects were given riociguat orally was designed to test the safety profile, pharmacokinetics and pharmacodynamics of single oral doses of riociguat (0.25–5 mg). A proof-of-concept study was conducted to investigate oral riociguat in patients with moderate to severe PH in a two-part, non-randomized, open-label, single center trial [251]. Riociguat was well tolerated in doses up to 2.5 mg, whereas 5 mg caused asymptomatic hypotension in one patient. Therefore the 2.5 mg dose was used in the second part of the trial to demonstrate efficacy. Riociguat significantly reduced mPAP, PVR and systemic vascular resistance and increased cardiac index [251]. Results from a multicenter, open-label, uncontrolled phase II trial involving 75 patients with PAH ( $n = 33$ ) and chronic thrombo-embolic PH ( $n = 42$ ) showed that 12 weeks of oral riociguat given 3 times daily conferred improvements in symptoms, NYHA FC, exercise capacity, NT-proBNP level, and pulmonary hemodynamics [252]. Riociguat is also under investigation in other form of PH as PH associated with chronic obstructive pulmonary disease, with interstitial lung disease or with left ventricular dysfunction [253-255].

The Phase III, double-blind, randomized, placebo-controlled PATENT-1 study investigated the efficacy and safety of riociguat in patients with symptomatic PAH [256]. Treatment-naïve patients and patients pre-treated with ERAs or prostacyclin analogues were eligible. Riociguat was titrated from a starting dose of 1 mg three times daily (t.i.d.) [range 0.5–2.5 mg t.i.d.]. The primary outcome was the change from baseline in 6-MWD at week 12. Secondary endpoints included the change from baseline in pulmonary vascular resistance (PVR), NT-proBNP, NYHA FC, clinical worsening, living with PH questionnaire and Borg dyspnea score. A total of 445 patients were randomized. Preliminary analysis showed a

significant increase in 6-MWD from baseline of 35.8 m with riociguat versus placebo (95% CI 20.1–51.5 m,  $p < 0.0001$ ). Predefined exploratory analyses indicated that riociguat improved 6-MWD in pretreated patients (+35.7 m [95% CI 15.0–56.3 m]) as well as treatment naïve patients (+38.4 m [95% CI 14.5–62.3 m]). Significant improvements were also seen in PVR ( $p < 0.0001$ ), NT-proBNP ( $p < 0.0001$ ), functional class ( $p = 0.003$ ), clinical worsening ( $p = 0.0046$ ), living with PH questionnaire ( $p = 0.002$ ) and Borg dyspnea score ( $p = 0.002$ ). Riociguat was well tolerated and had a favorable safety profile. Thus, riociguat may represent a new treatment option for patients with PAH. An open-label extension study (PATENT-2) will evaluate the long-term safety of riociguat in patients with PAH.

### **Selexipag**

Selexipag is an orally active prodrug metabolized to the highly selective prostacyclin IP receptor agonist ACT-333679 (previously known as MRE-269), which has a half-life of over 6 h [257]. With in high selectivity for the IP receptor over other prostanoid receptors (at least 130-fold selectivity), selexipag can be distinguished from beraprost or iloprost currently used in the management of PAH [258]. With no affinity for the prostaglandin E receptor 3 (EP3), selexipag exerts similar vasodilatory activity on both large and small pulmonary arterial branches [259] and its relaxant efficacy is not modified under conditions associated with PAH, whereas relaxation to treprostinil may be limited in the presence of mediators of disease such as ET-1 [260]. Preclinical study results showed that twice-daily administration of selexipag attenuates right ventricular hypertrophy, improves pulmonary hemodynamics, and significantly increases survival in MCT-treated PH rats [259].

A phase II study, involving 43 PAH patients showed that treatment with selexipag for 17 weeks conferred significant improvements in PVR (–30.3% versus placebo) compared with placebo [261]. Treatment with selexipag was well tolerated by most patients in this study. Adverse events were consistent with the known side effect profile of IPr agonism such as headache, pain in extremity, pain in jaw, nausea, and diarrhea. These side effects decreased over time in patients treated with selexipag [261].

A phase III randomized trial GRIPHON [262] to examine the effect of selexipag on morbidity and mortality in PAH is underway and will afford more information regarding efficacy and safety of selexipag.

### **Tyrosine kinase inhibitors**

One of the most promising targets in PAH is platelet-derived growth factor (PDGF). PDGF has been

implicated in endothelial cell dysfunction and proliferation and migration of smooth muscle cells. It has been suggested that PDGF may play a role in PAH [263-265]. Pulmonary vascular remodelling in different animal models of PAH was shown to regress with the administration of imatinib mesylate (Gleevec®), a PDGF receptors antagonist approved for the treatment of chronic myeloid leukaemia [266]. Moreover, case reports suggest a beneficial effect of imatinib among severe PAH patients and a first randomized (imatinib vs placebo), double-blind, 24 weeks Phase II study was performed in 59 PAH patients in NYHA functional class II to IV receiving specific PAH therapies [267]. The primary endpoint (6-MWD after 24 weeks) was not different between 2 groups (+22 m in imatinib group as compared to placebo) even if a significant improvement of hemodynamic parameters was observed, especially among the patients with the most severe hemodynamic compromise [267]. This preliminary study does not allow concluding on the potential benefits of imatinib in PAH, but led to development of a phase III clinical trial (IMPRES) evaluating imatinib in a randomized controlled double-blind trial of 24-week, in 202 severe PAH patients treated with at least two PAH specific drugs. After 24 weeks, a significant improvement in the primary endpoint, 6MWD, was observed (+32 m in imatinib group vs. placebo) as well as an improvement of secondary endpoints including hemodynamic parameters [268]. However, several cases of subdural hematoma were reported in patients treated with imatinib: 2 cases in the double-blind period of 24 weeks and 7 supplemental cases in an open-label extension phase of the study. The mechanism of these subdural hematomas is not elucidated and the high incidence observed may be partly favored by anticoagulation recommended for PAH patients. Subdural hematoma is a complication of imatinib previously reported in other settings where it has been used, including oncology or pulmonary fibrosis. Nevertheless, this complication has rarely been reported in previous clinical trials in PAH or in registries. In addition, it has been demonstrated that tyrosine kinase inhibitors, including imatinib, may have possible cardiac adverse effects on long term use that might limit its beneficence in PAH [269]. According to these results, the benefit/risk ratio of imatinib in PAH was not considered to be sufficient and to date, the use imatinib was not recommended in PAH.

#### **Non medical treatment**

##### ***Balloon atrial septostomy***

The presence of a right-left shunt, secondary to congenital cardiac malformation, or a patent foramen oval, among patients with severe PAH, seems to carry a better prognosis [270]. Atrioseptostomy is an artificial communication interauricular to decrease the right heart

volume, subjected to a high after load secondary to increased pulmonary resistances [271]. The surgical creation of a right-left shunt decreases right auricular pressure and increases systemic blood flow, later on, reduction in right ventricular wall tension is expected [271]. Thus, in spite of arterial desaturation induced by the shunt, oxygen delivery is improved [271]. Atrioseptostomy has however never been studied in controlled clinical trials. However, several experienced teams reported their data and it seems that immediate mortality is high, reaching 14% during the first week, particularly in the case of severe desaturation and right heart failure [105,271-273]. Among patients who survived, clinical improvement with regression of symptoms and gain of functional capacity can be observed. Atrioseptostomy should only be carried out in centers with significant experience, both in performance of atrioseptostomy and management of PAH patients, especially post interventional. The impact of balloon atrial septostomy on long term survival has not been established in RCTs [271,274].

##### ***Lung transplantation***

Lung transplantation was historically the treatment of choice for severe PAH and remains treatment of choice if medical treatments are insufficient [197]. However, this particularly heavy surgery can be proposed only to a minority of patients suffering from PAH. Moreover, long-term benefits remain disappointing with approximately 50% survival at 5 years [275]. Early mortality is mainly related to infectious complications whereas late mortality reflects mostly chronic rejection such as obliterating bronchiolitis. Mono-pulmonary transplantation had good long-term results [276,277], but most centers currently prefer bi-pulmonary transplantation which has less post-operative complications [278]. Cardiopulmonary transplantation may be necessary for patients presenting with terminal right heart failure or complex congenital heart disease [279]. In conclusion, PAH is a rare group of diseases that shares broadly similar pathological features, pathophysiology and clinical presentation. The discovery of the central role of endothelial dysfunction leads to the development of specific PAH therapies including prostanoids, endothelin receptor antagonists and PDE-5 inhibitors. Even these therapeutic advances, no cure of the disease can be achieved and the prognosis remains unsatisfactory.

#### **Abbreviations**

ALK-1: Activin A receptor type II-like kinase-1; BMP2: Bone morphogenetic protein receptor 2; CCB: Calcium channel blockers; CHD: Congenital heart diseases; Chest HRCT: Chest High resolution computed tomography; CI: Cardiac index; CMR: Cardiac magnetic resonance imaging; CO: Cardiac output; CTD: Connective tissue disease; CPET: Cardiopulmonary exercise testing; CTEPH: Chronic thrombo-embolic pulmonary hypertension; DLCO: Diffusing lung capacity of carbon monoxide; DLCO/VA: Diffusing lung capacity of carbon monoxide/alveolar volume; ESC: European Society of



Cardiology; ERS: European Respiratory Society; HHC: Hereditary hemorrhagic telangiectasia; HIV: Human immunodeficiency virus; INR: International Normalized Ratio; NIH: National Institute of Health; NO: Nitric oxide; NYHA: New York Heart Association; PAH: Pulmonary arterial hypertension; PFT: Pulmonary function test; mPAP: Mean pulmonary arterial pressure; PCWP: Pulmonary capillary wedge pressure; PVOD: Pulmonary veno-occlusive disease; PVR: Pulmonary Vascular Resistance; RAP: Right atrial pressure; PaO<sub>2</sub>: Partial pressure of arterial oxygen; PaCO<sub>2</sub>: Partial pressure of arterial carbon dioxide; PDGF: Platelet-Derived Growth Factor; RCT: Randomized clinical trial; RHC: Right heart catheterization; SpO<sub>2</sub>: Pulse arterial oxygen saturation; SR: Sex ratio; SvO<sub>2</sub>: Mixed venous oxygen saturation; TTE: Transthoracic Doppler-echocardiography; TKI: tyrosine kinase inhibitor; TLC: Total lung capacity; TPR: Total Pulmonary Resistance; TGF: beta Transforming growth factor beta; VEGF: Vascular endothelial growth factor; 6-MWD: 6-minute walk distance.

### Competing interests

D Montani, X Jaïs, L Savale, M Humbert, G Simonneau and O Sitbon have been supported by Actelion, Bayer Schering, GlaxoSmithKline, Novartis, Pfizer, Inc., Lilly & Co., and United Therapeutics for consultancy services and as members of their scientific advisory boards. The other authors declare that they have no competing interests.

### Authors' contributions

DM, SG, PD, FP, BG, GG, XJ, LS, EAM, LCP, MH, GS, OS participated in drafting the manuscript. All authors read and approved the final manuscript.

### Author details

<sup>1</sup>Univ. Paris-Sud, Faculté de Médecine, Kremlin-Bicêtre F-94270, France. <sup>2</sup>AP-HP, DHU TORINO, Centre de Référence de l'Hypertension Pulmonaire Sévère, Service de Pneumologie et Réanimation Respiratoire, Hôpital Bicêtre, Le Kremlin-Bicêtre F-94270, France. <sup>3</sup>INSERM U999, Labex LERMIT, Hypertension Artérielle Pulmonaire: Physiopathologie et Innovation Thérapeutique, Centre Chirurgical Marie Lannelongue, Le Plessis-Robinson F-92350, France. <sup>4</sup>Pulmonary Hypertension Service, Royal Brompton Hospital, London SW3 6NP, UK.

Received: 9 April 2013 Accepted: 12 June 2013

Published: 6 July 2013

### References

- Rubin LJ: Primary pulmonary hypertension. *N Engl J Med* 1997, **336**(2):111–7.
- Simonneau G, et al: Updated clinical classification of pulmonary hypertension. *J Am Coll Cardiol* 2009, **54**(1 Suppl):S43–54.
- Wagenvoort CA, Wagenvoort N: Primary pulmonary hypertension: a pathological study of the lung vessels in 156 clinically diagnosed cases. *Circulation* 1970, **42**:1163–84.
- Hatano S, Strasser T: *Primary Pulmonary Hypertension. Report on a WHO meeting. October 15–17, 1973.* Geneva: WHO; 1975.
- Fishman AP: Clinical classification of pulmonary hypertension. *Clin Chest Med* 2001, **22**(3):385–91. vii.
- Cogan JD, et al: High frequency of BMPR2 exonic deletions/duplications in familial pulmonary arterial hypertension. *Am J Respir Crit Care Med* 2006, **174**(5):590–8.
- Aldred MA, et al: BMPR2 gene rearrangements account for a significant proportion of mutations in familial and idiopathic pulmonary arterial hypertension. *Hum Mutat* 2006, **27**(2):212–3.
- Shintani M, et al: A new nonsense mutation of SMAD8 associated with pulmonary arterial hypertension. *J Med Genet* 2009, **46**(5):331–7.
- Nasim MT, et al: Molecular genetic characterization of SMAD signaling molecules in pulmonary arterial hypertension. *Hum Mutat* 2011, **2011**:2011.
- Austin ED, et al: Whole exome sequencing to identify a novel gene (caveolin-1) associated with human pulmonary arterial hypertension. *Circ Cardiovasc Genet* 2012, **5**(3):336–43.
- Machado RD, et al: Mutations of the TGF-beta type II receptor BMPR2 in pulmonary arterial hypertension. *Hum Mutat* 2006, **27**(2):121–32.
- Thomson JR, et al: Sporadic primary pulmonary hypertension is associated with germline mutations of the gene encoding BMPR-II, a receptor member of the TGF-β family. *J Med Genet* 2000, **37**:741–5.
- Chaouat A, et al: Endoglin germline mutation in a patient with hereditary haemorrhagic telangiectasia and dexfenfluramine associated pulmonary arterial hypertension. *Thorax* 2004, **59**(5):446–8.
- Trembath RC, et al: Clinical and molecular genetic features of pulmonary hypertension in patients with hereditary hemorrhagic telangiectasia. *N Engl J Med* 2001, **345**(5):325–34.
- Galie N, et al: Guidelines for the diagnosis and treatment of pulmonary hypertension. *Eur Respir J* 2009, **34**(6):1219–63.
- Simonneau G, et al: Clinical classification of pulmonary hypertension. *J Am Coll Cardiol* 2004, **43**(12 Suppl S):S5–12S.
- Souza R, et al: Pulmonary arterial hypertension associated with fenfluramine exposure: report of 109 cases. *Eur Respir J* 2008, **31**(2):343–8.
- Rich S, et al: Anorexigens and pulmonary hypertension in the United States: results from the surveillance of North American pulmonary hypertension. *Chest* 2000, **117**(3):870–4.
- Walker AM, et al: Temporal trends and drug exposures in pulmonary hypertension: an American experience. *Am Heart J* 2006, **152**(3):521–6.
- Frachon I, et al: Benfluorex and unexplained valvular heart disease: a case-control study. *PLoS One* 2010, **5**(4):e10128.
- Savale L, et al: Pulmonary hypertension associated with benfluorex exposure. *Eur Respir J* 2012, **40**(5):1164–72.
- Chin KM, Channick RN, Rubin LJ: Is methamphetamine use associated with idiopathic pulmonary arterial hypertension? *Chest* 2006, **130**(6):1657–63.
- Montani D, et al: Pulmonary arterial hypertension in patients treated by dasatinib. *Circulation* 2012, **125**(17):2128–37.
- Hachulla E, et al: Early detection of pulmonary arterial hypertension in systemic sclerosis: a French nationwide prospective multicenter study. *Arthritis Rheum* 2005, **52**(12):3792–800.
- Mukerjee D, et al: Prevalence and outcome in systemic sclerosis associated pulmonary arterial hypertension: application of a registry approach. *Ann Rheum Dis* 2003, **62**(11):1088–93.
- Launay D, et al: Prevalence and characteristics of moderate to severe pulmonary hypertension in systemic sclerosis with and without interstitial lung disease. *J Rheumatol* 2007, **34**(5):1005–11.
- de Groote P, et al: Evaluation of cardiac abnormalities by Doppler echocardiography in a large nationwide multicentric cohort of patients with systemic sclerosis. *Ann Rheum Dis* 2008, **67**(1):31–6.
- Meune C, et al: Cardiac involvement in systemic sclerosis assessed by tissue-doppler echocardiography during routine care: A controlled study of 100 consecutive patients. *Arthritis Rheum* 2008, **58**(6):1803–9.
- Kim KK, Factor SM: Membranoproliferative glomerulonephritis and plexogenic pulmonary arteriopathy in a homosexual man with acquired immunodeficiency syndrome. *Hum Pathol* 1987, **18**(12):1293–6.
- Mehta NJ, et al: HIV-Related pulmonary hypertension: analytic review of 131 cases. *Chest* 2000, **118**(4):1133–41.
- Opravil M, et al: HIV-associated primary pulmonary hypertension. A case control study. Swiss HIV Cohort Study. *Am J Respir Crit Care Med* 1997, **155**(3):990–5.
- Sitbon O, et al: Prevalence of HIV-related pulmonary arterial hypertension in the current antiretroviral therapy era. *Am J Respir Crit Care Med* 2008, **177**(1):108–13.
- Herve P, et al: Pulmonary vascular disorders in portal hypertension. *Eur Respir J* 1998, **11**(5):1153–66.
- Rodriguez-Roisin R, et al: Pulmonary-Hepatic vascular Disorders (PHD). *Eur Respir J* 2004, **24**(5):861–880.
- Hadengue A, et al: Pulmonary hypertension complicating portal hypertension: prevalence and relation to splanchnic hemodynamics. *Gastroenterology* 1991, **100**(2):520–8.
- Krowka MJ, et al: Portopulmonary hypertension: Results from a 10-year screening algorithm. *Hepatology* 2006, **44**(6):1502–10.
- Eisenmenger V: Die angeborene defecte der kammerscheidewand des herzen. *Z Klin Med* 1897:132–1.
- Wood P: The Eisenmenger syndrome or pulmonary hypertension with reversed central shunt. *Br Med J* 1958, **2**:701–712.
- Daliento L, et al: Eisenmenger syndrome. Factors relating to deterioration and death. *Eur Heart J* 1998, **19**(12):1845–55.
- Besterman E: Atrial Septal Defect with Pulmonary Hypertension. *Br Heart J* 1961, **23**(5):587–598.
- Hoffman JJ, Rudolph AM: The natural history of ventricular septal defects in infancy. *Am J Cardiol* 1965, **16**(5):634–53.



42. Lapa MS, et al: [Clinical characteristics of pulmonary hypertension patients in two reference centers in the city of Sao Paulo]. *Rev Assoc Med Bras* 2006, **52**(3):139–43.
43. Chaves E: The pathology of the arterial pulmonary vasculature in manson's schistosomiasis. *Dis Chest* 1966, **50**(1):72–7.
44. de Cleve R, et al: Prevalence of pulmonary hypertension in patients with hepatosplenic Manson's schistosomiasis—prospective study. *Hepatogastroenterology* 2003, **50**(54):2028–30.
45. Lapa M, et al: Cardiopulmonary manifestations of hepatosplenic schistosomiasis. *Circulation* 2009, **119**(11):1518–23.
46. Castro O, Hoque M, Brown BD: Pulmonary hypertension in sickle cell disease: cardiac catheterization results and survival. *Blood* 2003, **101**(4):1257–61.
47. Gladwin MT, et al: Pulmonary Hypertension as a Risk Factor for Death in Patients with Sickle Cell Disease. *N Engl J Med* 2004, **350**(9):886–895.
48. Aessopos A, et al: Pulmonary hypertension and right heart failure in patients with beta-thalassemia intermedia. *Chest* 1995, **107**(1):50–3.
49. Smedema JP, Louw VJ: Pulmonary arterial hypertension after splenectomy for hereditary spherocytosis. *Cardiovasc J Afr* 2007, **18**(2):84–9.
50. Jais X, et al: An extreme consequence of splenectomy in dehydrated hereditary stomatocytosis: gradual thrombo-embolic pulmonary hypertension and lung-heart transplantation. *Hemoglobin* 2003, **27**(3):139–47.
51. Stuard ID, Heusinkveld RS, Moss AJ: Microangiopathic hemolytic anemia and thrombocytopenia in primary pulmonary hypertension. *N Engl J Med* 1972, **287**(17):869–70.
52. Parent F, et al: A hemodynamic study of pulmonary hypertension in sickle cell disease. *N Engl J Med* 2011, **365**(1):44–53.
53. Montani D, et al: Pulmonary veno-occlusive disease: clinical, functional, radiologic, and hemodynamic characteristics and outcome of 24 cases confirmed by histology. *Medicine (Baltimore)* 2008, **87**(4):220–33.
54. Lantuejoul S, et al: Pulmonary veno-occlusive disease and pulmonary capillary hemangiomatosis: a clinicopathologic study of 35 cases. *Am J Surg Pathol* 2006, **30**(7):850–7.
55. Resten A, et al: Pulmonary hypertension: CT of the chest in pulmonary venoocclusive disease. *AJR Am J Roentgenol* 2004, **183**(1):65–70.
56. Holcomb BW Jr, et al: Pulmonary veno-occlusive disease: a case series and new observations. *Chest* 2000, **118**(6):1671–9.
57. Dufour B, et al: High-resolution CT of the chest in four patients with pulmonary capillary hemangiomatosis or pulmonary venoocclusive disease. *AJR Am J Roentgenol* 1998, **171**(5):1321–4.
58. Montani D, et al: Pulmonary veno-occlusive disease. *Eur Respir J* 2009, **33**(1):189–200.
59. Rabiller A, et al: Occult alveolar haemorrhage in pulmonary veno-occlusive disease. *Eur Respir J* 2006, **27**(1):108–13.
60. Oudiz RJ: Pulmonary hypertension associated with left-sided heart disease. *Clin Chest Med* 2007, **28**(1):233–41.
61. Abramson SV, et al: Pulmonary hypertension predicts mortality and morbidity in patients with dilated cardiomyopathy. *Ann Intern Med* 1992, **116**(1):888–95.
62. Zener JC, et al: Regression of extreme pulmonary hypertension after mitral valve surgery. *Am J Cardiol* 1972, **30**(8):820–6.
63. Braunwald E, et al: Effects of Mitral-Valve Replacement on the Pulmonary Vascular Dynamics of Patients with Pulmonary Hypertension. *N Engl J Med* 1965, **273**:509–14.
64. Delgado JF, et al: Pulmonary vascular remodeling in pulmonary hypertension due to chronic heart failure. *Eur J Heart Fail* 2005, **7**(6):1011–6.
65. Moraes DL, Colucci WS, Givertz MM: Secondary pulmonary hypertension in chronic heart failure: the role of the endothelium in pathophysiology and management. *Circulation* 2000, **102**(14):1718–23.
66. Fraser KL, et al: Pulmonary hypertension and cardiac function in adult cystic fibrosis: role of hypoxemia. *Chest* 1999, **115**(5):1321–8.
67. Cottin V, et al: Combined pulmonary fibrosis and emphysema: a distinct underrecognised entity. *Eur Respir J* 2005, **26**(4):586–93.
68. Weitzenblum E, et al: Prognostic value of pulmonary artery pressure in chronic obstructive pulmonary disease. *Thorax* 1981, **36**(10):752–8.
69. Thabut G, et al: Pulmonary hemodynamics in advanced COPD candidates for lung volume reduction surgery or lung transplantation. *Chest* 2005, **127**(5):1531–6.
70. Chaouat A, et al: Severe pulmonary hypertension and chronic obstructive pulmonary disease. *Am J Respir Crit Care Med* 2005, **172**(2):189–94.
71. Tapson VF, Humbert M: Incidence and prevalence of chronic thromboembolic pulmonary hypertension: from acute to chronic pulmonary embolism. *Proc Am Thorac Soc* 2006, **3**(7):564–7.
72. Pengo V, et al: Incidence of chronic thromboembolic pulmonary hypertension after pulmonary embolism. *N Engl J Med* 2004, **350**(22):2257–64.
73. Kim NH: Assessment of operability in chronic thromboembolic pulmonary hypertension. *Proc Am Thorac Soc* 2006, **3**(7):584–8.
74. Dartevelle P, et al: Chronic thromboembolic pulmonary hypertension. *Eur Respir J* 2004, **23**(4):637–48.
75. Jamieson SW, et al: Pulmonary endarterectomy: experience and lessons learned in 1,500 cases. *Ann Thorac Surg* 2003, **76**(5):1457–62. discussion 1462–4.
76. Suntharalingam J, et al: Long-term use of sildenafil in inoperable chronic thromboembolic pulmonary hypertension. *Chest* 2008, **134**(2):229–36.
77. Jais X, et al: Immunosuppressive therapy in lupus- and mixed connective tissue disease-associated pulmonary arterial hypertension: a retrospective analysis of twenty-three cases. *Arthritis Rheum* 2008, **58**(2):521–31.
78. Rubin LJ, et al: Current and future management of chronic thromboembolic pulmonary hypertension: from diagnosis to treatment responses. *Proc Am Thorac Soc* 2006, **3**(7):601–7.
79. Dingli D, et al: Unexplained pulmonary hypertension in chronic myeloproliferative disorders. *Chest* 2001, **120**(3):801–8.
80. Guilpain P, et al: Pulmonary Hypertension Associated with Myeloproliferative Disorders: A Retrospective Study of Ten Cases. *Respiration* 2008, **76**:295–302.
81. Marvin KS, Spellberg RD: Pulmonary hypertension secondary to thrombocytosis in a patient with myeloid metaplasia. *Chest* 1993, **103**(2):642–4.
82. Nand S, Orfei E: Pulmonary hypertension in polycythemia vera. *Am J Hematol* 1994, **47**(3):242–4.
83. Peacock AJ: Pulmonary hypertension after splenectomy: a consequence of loss of the splenic filter or is there something more? *Thorax* 2005, **60**(12):983–4.
84. Gluskowski J, et al: Pulmonary haemodynamics at rest and during exercise in patients with sarcoidosis. *Respiration* 1984, **46**(1):26–32.
85. Bourbonnais JM, Samavati L: Clinical predictors of pulmonary hypertension in sarcoidosis. *Eur Respir J* 2008, **32**(2):296–302.
86. Handa T, et al: Incidence of pulmonary hypertension and its clinical relevance in patients with sarcoidosis. *Chest* 2006, **129**(5):1246–52.
87. Nunes H, et al: Pulmonary hypertension associated with sarcoidosis: mechanisms, haemodynamics and prognosis. *Thorax* 2006, **61**(1):68–74.
88. Dauriat G, et al: Lung transplantation for pulmonary langerhans' cell histiocytosis: a multicenter analysis. *Transplantation* 2006, **81**(5):746–50.
89. Fartoukh M, et al: Severe pulmonary hypertension in histiocytosis X. *Am J Respir Crit Care Med* 2000, **161**(1):216–23.
90. Harari S, et al: Advanced pulmonary histiocytosis X is associated with severe pulmonary hypertension. *Chest* 1997, **111**(4):1142–4.
91. Cottin V, et al: Pulmonary hypertension in lymphangioleiomyomatosis: characteristics in 20 patients. *Eur Respir J* 2012, **40**(3):630–40.
92. Montani D, et al: Pulmonary hypertension in patients with neurofibromatosis type I. *Medicine (Baltimore)* 2011, **90**(3):201–11.
93. Hamaoka K, et al: Pulmonary hypertension in type I glycogen storage disease. *Pediatr Cardiol* 1990, **11**(1):54–6.
94. Inoue S, et al: [Pulmonary hypertension due to glycogen storage disease type II (Pompe's disease): a case report]. *J Cardiol* 1989, **19**(1):323–32.
95. Humbert M, et al: Pulmonary arterial hypertension and type-I glycogen-storage disease: the serotonin hypothesis. *Eur Respir J* 2002, **20**(1):59–65.
96. Pizzo CL: Type I glycogen storage disease with focal nodular hyperplasia of the liver and vasoconstrictive pulmonary hypertension. *Pediatrics* 1980, **65**(2):341–3.
97. Elstein D, et al: Echocardiographic assessment of pulmonary hypertension in Gaucher's disease. *Lancet* 1998, **351**(9115):1544–6.
98. Lee R, Yousef S: The frequency and type of lung involvement in patients with Gaucher's disease. *Lab Invest* 1998, **58**:54. A (Abstract).
99. Theise ND, Scheuer PJ, Grundy JE: Cytomegalovirus and autoimmune liver disease. *J Clin Pathol* 1989, **42**(12):1310–1.

100. Chu JW, et al: High prevalence of autoimmune thyroid disease in pulmonary arterial hypertension. *Chest* 2002, **122**(5):1668–73.
101. Mayer E, et al: Surgical treatment of pulmonary artery sarcoma. *J Thorac Cardiovasc Surg* 2001, **121**(1):77–82.
102. Anderson MB, et al: Primary pulmonary artery sarcoma: a report of six cases. *Ann Thorac Surg* 1995, **59**(6):1487–90.
103. Mussot S, et al: Retrospective institutional study of 31 patients treated for pulmonary artery sarcoma. *Eur J Cardiothorac Surg* 2013, **43**(4):787–93.
104. Yigla M, et al: Pulmonary hypertension in patients with end-stage renal disease. *Chest* 2003, **123**(5):1577–82.
105. Rich S, et al: Primary pulmonary hypertension. A national prospective study. *Ann Intern Med* 1987, **107**(2):216–23.
106. D'Alonzo GE, et al: Survival in patients with primary pulmonary hypertension. Results from a national prospective registry. *Ann Intern Med* 1991, **115**(5):343–9.
107. Humbert M, Sitbon O, Simonneau G: Treatment of pulmonary arterial hypertension. *N Engl J Med* 2004, **351**(14):1425–36.
108. Humbert M, et al: Pulmonary arterial hypertension in France: results from a national registry. *Am J Respir Crit Care Med* 2006, **173**(9):1023–30.
109. Humbert M, et al: Survival in patients with idiopathic, familial, and anorexigen-associated pulmonary arterial hypertension in the modern management era. *Circulation* 2010, **122**(2):156–63.
110. Benza RL, et al: Predicting survival in pulmonary arterial hypertension: insights from the Registry to Evaluate Early and Long-Term Pulmonary Arterial Hypertension Disease Management (REVEAL). *Circulation* 2010, **122**(2):164–72.
111. Humbert M, et al: Bone morphogenetic protein receptor 2 germline mutations in pulmonary arterial hypertension associated with fenfluramine derivatives. *Eur Respir J* 2002, **20**(3):518–523.
112. Machado RD, et al: Genetic association of the serotonin transporter in pulmonary arterial hypertension. *Am J Respir Crit Care Med* 2006, **173**(7):793–7.
113. Thomson J, et al: Familial and sporadic primary pulmonary hypertension is caused by BMPR2 gene mutations resulting in haploinsufficiency of the bone morphogenetic protein type II receptor. *J Heart Lung Transplant* 2001, **20**(2):149.
114. Sztrymf B, et al: Clinical outcomes of pulmonary arterial hypertension in carriers of BMPR2 mutation. *Am J Respir Crit Care Med* 2008, **177**(12):1377–83.
115. Loyd J, et al: Genetic anticipation and abnormal gender ratio at birth in familial primary pulmonary hypertension. *Am J Respir Crit Care Med* 1995, **152**:93–97.
116. Loyd JE, Primm RK, Newman JH: Familial primary pulmonary hypertension: clinical patterns. *Am Rev Respir Dis* 1984, **129**(1):194–7.
117. Deng Z, et al: Familial primary pulmonary hypertension (gene PPH1) is caused by mutations in the bone morphogenetic protein receptor-II gene. *Am J Hum Genet* 2000, **67**:737–744.
118. Lane KB, et al: Heterozygous germline mutations in BMPR2, encoding a TGF-beta receptor, cause familial primary pulmonary hypertension. The International PPH Consortium. *Nat Genet* 2000, **26**(1):81–4.
119. Machado RD, et al: Genetics and genomics of pulmonary arterial hypertension. *J Am Coll Cardiol* 2009, **54**(1 Suppl):S32–42.
120. Girerd B, et al: Clinical outcomes of pulmonary arterial hypertension in patients carrying an ACVRL1 (ALK1) mutation. *Am J Respir Crit Care Med* 2010, **181**(8):851–61.
121. Rosenzweig EB, et al: Clinical implications of determining BMPR2 mutation status in a large cohort of children and adults with pulmonary arterial hypertension. *J Heart Lung Transplant* 2008, **27**(6):668–74.
122. Aldred MA, et al: Characterization of the BMPR2 5'-untranslated region and a novel mutation in pulmonary hypertension. *Am J Respir Crit Care Med* 2007, **176**(8):819–24.
123. Humbert M: Update in pulmonary hypertension 2008. *Am J Respir Crit Care Med* 2009. in press.
124. Trembath R, et al: Clinical and molecular genetic features of pulmonary hypertension in hereditary hemorrhagic telangiectasia. *N Engl J Med* 2001, **345**:325–334.
125. Abdalla SA, et al: Primary pulmonary hypertension in families with hereditary haemorrhagic telangiectasia. *Eur Respir J* 2004, **23**(3):373–7.
126. Harrison RE, et al: Molecular and functional analysis identifies ALK-1 as the predominant cause of pulmonary hypertension related to hereditary haemorrhagic telangiectasia. *J Med Genet* 2003, **40**(12):865–71.
127. Harrison RE, et al: Transforming growth factor-beta receptor mutations and pulmonary arterial hypertension in childhood. *Circulation* 2005, **111**(4):435–41.
128. Fujiwara M, et al: Implications of mutations of activin receptor-like kinase 1 gene (ALK1) in addition to bone morphogenetic protein receptor II gene (BMPR2) in children with pulmonary arterial hypertension. *Circ J* 2008, **72**(1):127–33.
129. Smoot LB, et al: Clinical Features of Pulmonary Arterial Hypertension in Young People with an ALK1 Mutation and Hereditary Hemorrhagic Telangiectasia. *Arch Dis Child* 2009, **94**(7):506–11.
130. Cracowski JL, et al: Évaluation pronostique de biomarqueurs dans l'hypertension artérielle pulmonaire. *Rev Mal Respir* 2004, **21**(6 Pt 1):1137–43.
131. Morrell N, et al: Altered growth responses of pulmonary artery smooth muscle cells from patients with primary pulmonary hypertension to transforming growth factor-beta1 and bone morphogenetic proteins. *Circulation* 2001, **104**:790–795.
132. Masri F, et al: Hyperproliferative apoptosis-resistant endothelial cells in idiopathic pulmonary arterial hypertension. *Am J Physiol Lung Cell Mol Physiol* 2007, **293**(3):L548–54.
133. Sztrymf B, et al: Genes and pulmonary arterial hypertension. *Respiration* 2007, **74**(2):123–32.
134. Girerd B, et al: Absence of influence of gender and BMPR2 mutation type on clinical phenotypes of pulmonary arterial hypertension. *Respir Res* 2010, **11**:73.
135. West J, et al: Gene expression in BMPR2 mutation carriers with and without evidence of pulmonary arterial hypertension suggests pathways relevant to disease penetrance. *BMC Med Genomics* 2008, **1**:45.
136. Austin ED, et al: Alterations in oestrogen metabolism: implications for higher penetrance of familial pulmonary arterial hypertension in females. *Eur Respir J* 2009, **34**(5):1093–9.
137. O'Callaghan DS, et al: Treatment of pulmonary arterial hypertension with targeted therapies. *Nat Rev Cardiol* 2011, **8**(9):526–38.
138. Stenmark KR, et al: Hypoxic activation of adventitial fibroblasts: role in vascular remodeling. *Chest* 2002, **122**(6 Suppl):326S–334S.
139. Davie NJ, et al: Hypoxia-induced pulmonary artery adventitial remodeling and neovascularization: contribution of progenitor cells. *Am J Physiol Lung Cell Mol Physiol* 2004, **286**(4):L668–78.
140. Cool CD, et al: Three-dimensional reconstruction of pulmonary arteries in plexiform pulmonary hypertension using cell-specific markers. Evidence for a dynamic and heterogeneous process of pulmonary endothelial cell growth. *Am J Pathol* 1999, **155**(2):411–9.
141. Montani D, et al: C-Kit Positive Cells Accumulate in Remodeled Vessels of Idiopathic Pulmonary Arterial Hypertension. *Am J Respir Crit Care Med* 2011, **184**(1):116–23.
142. Gambaryan N, et al: Circulating fibrocytes and pulmonary arterial hypertension. *Eur Respir J* 2012, **39**(1):210–2.
143. Gambaryan N, et al: Targeting of c-kit + haematopoietic progenitor cells prevents hypoxic pulmonary hypertension. *Eur Respir J* 2011, **37**(6):1392–9.
144. Kherbeck N, et al: The Role of Inflammation and Autoimmunity in the Pathophysiology of Pulmonary Arterial Hypertension. *Clin Rev Allergy Immunol* 2013, **44**(1):31–8.
145. Balabanian K, et al: CX(3)C chemokine fractalkine in pulmonary arterial hypertension. *Am J Respir Crit Care Med* 2002, **165**(10):1419–25.
146. Itoh T, et al: Increased plasma monocyte chemoattractant protein-1 level in idiopathic pulmonary arterial hypertension. *Respirology* 2006, **11**(2):158–63.
147. Nicolls MR, et al: Autoimmunity and pulmonary hypertension: a perspective. *Eur Respir J* 2005, **26**(6):1110–8.
148. Perros F, et al: Dendritic cell recruitment in lesions of human and experimental pulmonary hypertension. *Eur Respir J* 2007, **29**(3):462–8.
149. Herve P, et al: Pathobiology of pulmonary hypertension. The role of platelets and thrombosis. *Clin Chest Med* 2001, **22**(3):451–8.
150. Herve P, et al: Increased plasma serotonin in primary pulmonary hypertension. *Am J Med* 1995, **99**:249–254.
151. Huertas A, et al: Leptin and regulatory T lymphocytes in idiopathic pulmonary arterial hypertension. *Eur Respir J* 2012, **40**(4):895–904.
152. Perros F, et al: Pulmonary lymphoid neogenesis in idiopathic pulmonary arterial hypertension. *Am J Respir Crit Care Med* 2012, **185**(3):311–21.
153. Humbert M, et al: Cellular and molecular pathobiology of pulmonary arterial hypertension. *J Am Coll Cardiol* 2004, **43**(12 Suppl S):135S–245S.

154. Christman BW, et al: An imbalance between the excretion of thromboxane and prostacyclin metabolites in pulmonary hypertension. *N Engl J Med* 1992, **327**(2):70–5.
155. Montani D, et al: Phosphodiesterase type 5 inhibitors in pulmonary arterial hypertension. *Adv Ther* 2009, **26**(9):813–25.
156. Petkov V, et al: Vasoactive intestinal peptide as a new drug for treatment of primary pulmonary hypertension. *J Clin Invest* 2003, **111**(9):1339–46.
157. Jeffery T, Morrell NW: Molecular and cellular basis of pulmonary vascular remodeling in pulmonary hypertension. *Prog Cardiovasc Dis* 2002, **45**:173–202.
158. Giaid A, et al: Expression of endothelin-1 in the lungs of patients with pulmonary hypertension. *N Engl J Med* 1993, **328**(24):1732–9.
159. Yuan XJ, et al: Attenuated K<sup>+</sup> channel gene transcription in primary pulmonary hypertension. *Lancet* 1998, **351**(9104):726–7.
160. Yuan JX, et al: Dysfunctional voltage-gated K<sup>+</sup> channels in pulmonary artery smooth muscle cells of patients with primary pulmonary hypertension. *Circulation* 1998, **98**(14):1400–6.
161. Weir EK, et al: Anorexic Agents Aminorex, Fenfluramine, and Dexfenfluramine Inhibit Potassium Current in Rat Pulmonary Vascular Smooth Muscle and Cause Pulmonary Vasoconstriction. *Circulation* 1996, **94**(9):2216–2220.
162. MacLean MR, et al: 5-hydroxytryptamine and the pulmonary circulation: receptors, transporters and relevance to pulmonary arterial hypertension. *Br J Pharmacol* 2000, **131**(2):161–8.
163. Marcos E, et al: Serotonin transporter inhibitors protect against hypoxic pulmonary hypertension. *Am J Respir Crit Care Med* 2003, **168**(4):487–93.
164. Keegan A, et al: Contribution of the 5-HT<sub>1B</sub> receptor to hypoxia-induced pulmonary hypertension: converging evidence using 5-HT<sub>1B</sub>-receptor knockout mice and the 5-HT<sub>1B/1D</sub>-receptor antagonist GR127935. *Circ Res* 2001, **89**(12):1231–9.
165. Guilluy C, et al: Inhibition of RhoA/Rho kinase pathway is involved in the beneficial effect of sildenafil on pulmonary hypertension. *Br J Pharmacol* 2005, **146**(7):1010–8.
166. Nagaoka T, et al: Inhaled Rho kinase inhibitors are potent and selective vasodilators in rat pulmonary hypertension. *Am J Respir Crit Care Med* 2005, **171**(5):494–9.
167. Guilluy C, et al: RhoA and Rho kinase activation in human pulmonary hypertension: role of 5-HT signaling. *Am J Respir Crit Care Med* 2009, **179**(12):1151–8.
168. Semenza GL: HIF-1 and mechanisms of hypoxia sensing. *Curr Opin Cell Biol* 2001, **13**(2):167–71.
169. Semenza GL: Involvement of hypoxia-inducible factor 1 in pulmonary pathophysiology. *Chest* 2005, **128**(6 Suppl):592S–594S.
170. Tudor RM, et al: Expression of angiogenesis-related molecules in plexiform lesions in severe pulmonary hypertension: evidence for a process of disordered angiogenesis. *J Pathol* 2001, **195**(3):367–74.
171. Remillard CV, Yuan JX: High altitude pulmonary hypertension: role of K<sup>+</sup> and Ca<sup>2+</sup> channels. *High Alt Med Biol* 2005, **6**(2):133–46.
172. Cool CD, et al: Pathogenesis and evolution of plexiform lesions in pulmonary hypertension associated with scleroderma and human immunodeficiency virus infection. *Hum Pathol* 1997, **28**(4):434–42.
173. Pietra GG, et al: Pathologic assessment of vasculopathies in pulmonary hypertension. *J Am Coll Cardiol* 2004, **43**(12 Suppl S):25S–32S.
174. Bjornsson J, Edwards WD: Primary pulmonary hypertension: a histopathologic study of 80 cases. *Mayo Clin Proc* 1985, **60**(1):16–25.
175. Heath D, Edwards JE: The pathology of hypertensive pulmonary vascular disease; a description of six grades of structural changes in the pulmonary arteries with special reference to congenital cardiac septal defects. *Circulation* 1958, **18**(4 Part 1):533–47.
176. Dorfmueller P, et al: Inflammation in pulmonary arterial hypertension. *Eur Respir J* 2003, **22**(2):358–63.
177. Dorfmueller P, et al: Chemokine RANTES in severe pulmonary arterial hypertension. *Am J Respir Crit Care Med* 2002, **165**(4):534–9.
178. Dorfmueller P, et al: Fibrous remodeling of the pulmonary venous system in pulmonary arterial hypertension associated with connective tissue diseases. *Hum Pathol* 2007, **38**(6):893–902.
179. Overbeek MJ, et al: Pulmonary arterial hypertension in limited cutaneous systemic sclerosis: a distinctive vasculopathy. *Eur Respir J* 2009, **34**(2):371–9.
180. Golde DW, et al: Occult pulmonary haemorrhage in leukaemia. *Br Med J* 1975, **2**(5964):166–8.
181. Tron V, et al: Pulmonary capillary hemangiomatosis. *Hum Pathol* 1986, **17**(11):1144–50.
182. Runo JR, et al: Pulmonary veno-occlusive disease caused by an inherited mutation in bone morphogenetic protein receptor II. *Am J Respir Crit Care Med* 2003, **167**(6):889–94.
183. Barst RJ, et al: Diagnosis and differential assessment of pulmonary arterial hypertension. *J Am Coll Cardiol* 2004, **43**(12 Suppl S):40S–47S.
184. Elliott CG, et al: Pulmonary veno-occlusive disease associated with severe reduction of single-breath carbon monoxide diffusing capacity. *Respiration* 1988, **53**(4):262–6.
185. Groepenhoff H, et al: Exercise testing to estimate survival in pulmonary hypertension. *Med Sci Sports Exerc* 2008, **40**(10):1725–32.
186. Wensel R, et al: Assessment of survival in patients with primary pulmonary hypertension: importance of cardiopulmonary exercise testing. *Circulation* 2002, **106**(3):319–24.
187. McQuillan BM, et al: Clinical correlates and reference intervals for pulmonary artery systolic pressure among echocardiographically normal subjects. *Circulation* 2001, **104**(23):2797–802.
188. Tunariu N, et al: Ventilation-perfusion scintigraphy is more sensitive than multidetector CTPA in detecting chronic thromboembolic pulmonary disease as a treatable cause of pulmonary hypertension. *J Nucl Med* 2007, **48**(5):680–4.
189. Ley S, et al: Diagnostic performance of state-of-the-art imaging techniques for morphological assessment of vascular abnormalities in patients with chronic thromboembolic pulmonary hypertension (CTEPH). *Eur Radiol* 2012, **22**(3):607–16.
190. Marcus JT, et al: Interventricular mechanical asynchrony in pulmonary arterial hypertension: left-to-right delay in peak shortening is related to right ventricular overload and left ventricular underfilling. *J Am Coll Cardiol* 2008, **51**(7):750–7.
191. Haddad F, et al: Right ventricular function in cardiovascular disease, part I: Anatomy, physiology, aging, and functional assessment of the right ventricle. *Circulation* 2008, **117**(11):1436–48.
192. Galie N, et al: Guidelines for the diagnosis and treatment of pulmonary hypertension: The Task Force for the Diagnosis and Treatment of Pulmonary Hypertension of the European Society of Cardiology (ESC) and the European Respiratory Society (ERS), endorsed by the International Society of Heart and Lung Transplantation (ISHLT). *Eur Heart J* 2009, **30**(20):2493–537.
193. van Wolfen SA, et al: Prognostic value of right ventricular mass, volume, and function in idiopathic pulmonary arterial hypertension. *Eur Heart J* 2007, **28**(10):1250–7.
194. Naeije R: Hepatopulmonary syndrome and portopulmonary hypertension. *Swiss Med Wkly* 2003, **133**(11–12):163–9.
195. Hoepfer MM, et al: Complications of right heart catheterization procedures in patients with pulmonary hypertension in experienced centers. *J Am Coll Cardiol* 2006, **48**(12):2546–52.
196. Benza RL, et al: The REVEAL Registry risk score calculator in patients newly diagnosed with pulmonary arterial hypertension. *Chest* 2012, **141**(2):354–62.
197. Sitbon O, Humbert M, Simonneau G: Primary pulmonary hypertension: Current therapy. *Prog Cardiovasc Dis* 2002, **45**(2):115–28.
198. Bonnin M, et al: Severe pulmonary hypertension during pregnancy: mode of delivery and anesthetic management of 15 consecutive cases. *Anesthesiology* 2005, **102**(6):1133–7. discussion 5A–6A.
199. Price LC, et al: Non-cardiothoracic non-obstetric surgery in mild-moderate pulmonary hypertension: Perioperative management of 28 consecutive individual cases. *Eur Respir J* 2010, **35**(6):1294–302.
200. Provencher S, et al: Heart rate responses during the 6-minute walk test in pulmonary arterial hypertension. *Eur Respir J* 2006, **27**(1):114–20.
201. Sitbon O, et al: Long-term intravenous epoprostenol infusion in primary pulmonary hypertension: prognostic factors and survival. *J Am Coll Cardiol* 2002, **40**(4):780–8.
202. Fuster V, et al: Primary pulmonary hypertension: natural history and the importance of thrombosis. *Circulation* 1984, **70**(4):580–7.
203. Rich S, Kaufmann E, Levy PS: The effect of high doses of calcium-channel blockers on survival in primary pulmonary hypertension. *N Engl J Med* 1992, **327**(2):76–81.



204. Rich S, et al: The short-term effects of digoxin in patients with right ventricular dysfunction from pulmonary hypertension. *Chest* 1998, **114**(3):787–92.
205. Sitbon O, et al: Long-term response to calcium channel blockers in idiopathic pulmonary arterial hypertension. *Circulation* 2005, **111**(23):3105–11.
206. Moncada S, et al: An enzyme isolated from arteries transforms prostaglandin endoperoxides to an unstable substance that inhibits platelet aggregation. *Nature* 1976, **263**(5579):663–5.
207. Rubin LJ, et al: Treatment of primary pulmonary hypertension with continuous intravenous prostacyclin (epoprostenol). Results of a randomized trial. *Ann Intern Med* 1990, **112**(7):485–91.
208. O'Callaghan DS, et al: Treatment of pulmonary arterial hypertension with targeted therapies. *Nat Rev Cardiol* 2011, **8**(9):526–38.
209. Higenbottam T, et al: Long-term treatment of primary pulmonary hypertension with continuous intravenous epoprostenol (prostacyclin). *Lancet* 1984, **1**(8385):1046–7.
210. Robbins IM, et al: A survey of diagnostic practices and the use of epoprostenol in patients with primary pulmonary hypertension. *Chest* 1998, **114**(5):1269–75.
211. Barst RJ, et al: A comparison of continuous intravenous epoprostenol (prostacyclin) with conventional therapy for primary pulmonary hypertension. The Primary Pulmonary Hypertension Study Group. *N Engl J Med* 1996, **334**(5):296–302.
212. Badesch DB, et al: Continuous intravenous epoprostenol for pulmonary hypertension due to the scleroderma spectrum of disease. A randomized, controlled trial. *Ann Intern Med* 2000, **132**(6):425–34.
213. Barst RJ, et al: Survival in primary pulmonary hypertension with long-term continuous intravenous prostacyclin. *Ann Intern Med* 1994, **121**(6):409–15.
214. McLaughlin VV, Shillington A, Rich S: Survival in primary pulmonary hypertension: the impact of epoprostenol therapy. *Circulation* 2002, **106**(12):1477–82.
215. Rosenzweig EB, Kerstein D, Barst RJ: Long-term prostacyclin for pulmonary hypertension with associated congenital heart defects. *Circulation* 1999, **99**(14):1858–65.
216. Nunes H, et al: Prognostic factors for survival in human immunodeficiency virus-associated pulmonary arterial hypertension. *Am J Respir Crit Care Med* 2003, **167**(10):1433–9.
217. Cabrol S, et al: Intravenous epoprostenol in inoperable chronic thromboembolic pulmonary hypertension. *J Heart Lung Transplant* 2007, **26**(4):357–62.
218. McLaughlin VV, et al: Reduction in pulmonary vascular resistance with long-term epoprostenol (prostacyclin) therapy in primary pulmonary hypertension. *N Engl J Med* 1998, **338**(5):273–7.
219. Shapiro SM, et al: Primary pulmonary hypertension: improved long-term effects and survival with continuous intravenous epoprostenol infusion. *J Am Coll Cardiol* 1997, **30**(2):343–9.
220. Laliberte K, et al: Pharmacokinetics and steady-state bioequivalence of treprostinil sodium (Remodulin) administered by the intravenous and subcutaneous route to normal volunteers. *J Cardiovasc Pharmacol* 2004, **44**(2):209–14.
221. Simonneau G, et al: Continuous subcutaneous infusion of treprostinil, a prostacyclin analogue, in patients with pulmonary arterial hypertension: a double-blind, randomized, placebo-controlled trial. *Am J Respir Crit Care Med* 2002, **165**(6):800–4.
222. McLaughlin VV, et al: Addition of inhaled treprostinil to oral therapy for pulmonary arterial hypertension: a randomized controlled clinical trial. *J Am Coll Cardiol* 2010, **55**(18):1915–22.
223. Olschewski H, et al: Inhaled iloprost for severe pulmonary hypertension. *N Engl J Med* 2002, **347**(5):322–9.
224. Hoeper MM, et al: Long-term treatment of primary pulmonary hypertension with aerosolized iloprost, a prostacyclin analogue. *N Engl J Med* 2000, **342**(25):1866–70.
225. Channick RN, et al: Effects of the dual endothelin-receptor antagonist bosentan in patients with pulmonary hypertension: a randomised placebo-controlled study. *Lancet* 2001, **358**(9288):1119–23.
226. Rubin LJ, et al: Bosentan therapy for pulmonary arterial hypertension. *N Engl J Med* 2002, **346**(12):896–903.
227. Humbert M, et al: Combination of bosentan with epoprostenol in pulmonary arterial hypertension: BREATHE-2. *Eur Respir J* 2004, **24**(3):353–9.
228. Galie N, et al: Treatment of patients with mildly symptomatic pulmonary arterial hypertension with bosentan (EARLY study): a double-blind, randomised controlled trial. *Lancet* 2008, **371**(9630):2093–100.
229. Sitbon O, et al: Effects of the dual endothelin receptor antagonist bosentan in patients with pulmonary arterial hypertension: a 1-year follow-up study. *Chest* 2003, **124**(1):247–54.
230. McLaughlin VV, et al: Survival with first-line bosentan in patients with primary pulmonary hypertension. *Eur Respir J* 2005, **25**(2):244–9.
231. Sitbon O, et al: Survival in patients with class III idiopathic pulmonary arterial hypertension treated with first line oral bosentan compared with an historical cohort of patients started on intravenous epoprostenol. *Thorax* 2005, **60**(12):1025–30.
232. Galie N, et al: Ambrisentan for the treatment of pulmonary arterial hypertension: results of the ambrisentan in pulmonary arterial hypertension, randomized, double-blind, placebo-controlled, multicenter, efficacy (ARIES) study 1 and 2. *Circulation* 2008, **117**(23):3010–9.
233. Klinger JR, et al: Long-term pulmonary hemodynamic effects of ambrisentan in pulmonary arterial hypertension. *Am J Cardiol* 2011, **108**(2):302–7.
234. Ghofrani HA, et al: Sildenafil for treatment of lung fibrosis and pulmonary hypertension: a randomised controlled trial. *Lancet* 2002, **360**(9337):895–900.
235. Schermuly RT, et al: Chronic sildenafil treatment inhibits monocrotaline-induced pulmonary hypertension in rats. *Am J Respir Crit Care Med* 2004, **169**(1):39–45.
236. Galie N, et al: Sildenafil citrate therapy for pulmonary arterial hypertension. *N Engl J Med* 2005, **353**(20):2148–57.
237. Galie N, et al: Tadalafil therapy for pulmonary arterial hypertension. *Circulation* 2009, **119**(22):2894–903.
238. Barst RJ, et al: Tadalafil monotherapy and as add-on to background bosentan in patients with pulmonary arterial hypertension. *J Heart Lung Transplant* 2011, **30**(6):632–43.
239. Simonneau G, et al: Addition of sildenafil to long-term intravenous epoprostenol therapy in patients with pulmonary arterial hypertension: a randomized trial. *Ann Intern Med* 2008, **149**(8):521–30.
240. McLaughlin VV, et al: Randomized study of adding inhaled iloprost to existing bosentan in pulmonary arterial hypertension. *Am J Respir Crit Care Med* 2006, **174**(11):1257–63.
241. Hoeper MM, et al: Bosentan treatment in patients with primary pulmonary hypertension receiving nonparenteral prostanoids. *Eur Respir J* 2003, **22**(2):330–4.
242. Ghofrani HA, et al: Oral sildenafil as long-term adjunct therapy to inhaled iloprost in severe pulmonary arterial hypertension. *J Am Coll Cardiol* 2003, **42**(1):158–64.
243. Gombert-Maitland M, et al: Efficacy and safety of sildenafil added to treprostinil in pulmonary hypertension. *Am J Cardiol* 2005, **96**(9):1334–6.
244. Hoeper MM, et al: Combination therapy with bosentan and sildenafil in idiopathic pulmonary arterial hypertension. *Eur Respir J* 2004, **24**(6):1007–10.
245. Mathai SC, et al: Addition of sildenafil to bosentan monotherapy in pulmonary arterial hypertension. *Eur Respir J* 2007, **29**(3):469–75.
246. Rubin LJ, et al: Effect of Macitentan on Morbidity and Mortality in Pulmonary Arterial Hypertension (PAH): Results From the SERAPHIN Trial. *Chest* 2012, **142**:1026A–1026A. doi:10.1378/chest.1456207.
247. Iglarz M, et al: Pharmacology of macitentan, an orally active tissue-targeting dual endothelin receptor antagonist. *J Pharmacol Exp Ther* 2008, **327**(3):736–45.
248. Sidharta PN, et al: Macitentan: entry-into-humans study with a new endothelin receptor antagonist. *Eur J Clin Pharmacol* 2011, **67**(10):977–84.
249. Jing ZC, et al: Vardenafil in pulmonary arterial hypertension: a randomized, double-blind, placebo-controlled study. *Am J Respir Crit Care Med* 2011, **183**(12):1723–9.
250. Ghofrani HA, Grimminger F: Soluble guanylate cyclase stimulation: an emerging option in pulmonary hypertension therapy. *Eur Respir Rev* 2009, **18**(111):35–41.
251. Grimminger F, et al: First acute haemodynamic study of soluble guanylate cyclase stimulator riociguat in pulmonary hypertension. *Eur Respir J* 2009, **33**(4):785–92.
252. Ghofrani HA, et al: Riociguat for chronic thromboembolic pulmonary hypertension and pulmonary arterial hypertension: a phase II study. *Eur Respir J* 2010, **36**(4):792–9.
253. Schermuly RT, et al: Riociguat for the treatment of pulmonary hypertension. *Expert Opin Investig Drugs* 2011, **20**(4):567–76.
254. Ghio S, et al: Left ventricular systolic dysfunction associated with pulmonary hypertension riociguat trial (LEPHT): rationale and design. *Eur J Heart Fail* 2012, **14**(8):946–53.
255. Hoeper MM, et al: Riociguat for interstitial lung disease and pulmonary hypertension: a pilot trial. *Eur Respir J* 2013, **41**(4):853–60.



256. Ghofrani H, et al: Riociguat for the Treatment of Pulmonary Arterial Hypertension. *N Engl J Med* 2013, **369**(4):330–40.
257. Asaki T, et al: Structure-activity studies on diphenylpyrazine derivatives: a novel class of prostacyclin receptor agonists. *Bioorg Med Chem* 2007, **15**(21):6692–704.
258. Kuwano K, et al: 2-[4-[(5,6-diphenylpyrazin-2-yl)(isopropyl)amino]butoxy]-N-(methylsulfonyl)acetamide (NS-304), an orally available and long-acting prostacyclin receptor agonist prodrug. *J Pharmacol Exp Ther* 2007, **322**(3):1181–8.
259. Kuwano K, et al: A long-acting and highly selective prostacyclin receptor agonist prodrug, 2-[4-[(5,6-diphenylpyrazin-2-yl)(isopropyl)amino]butoxy]-N-(methylsulfonyl)acetamide (NS-304), ameliorates rat pulmonary hypertension with unique relaxant responses of its active form, {4-[(5,6-diphenylpyrazin-2-yl)(isopropyl)amino]butoxy}acetic acid (MRE-269), on rat pulmonary artery. *J Pharmacol Exp Ther* 2008, **326**(3):691–9.
260. Morrison K, et al: Differential effects of selexipag and prostacyclin analogs in rat pulmonary artery. *J Pharmacol Exp Ther* 2012, **343**(3):547–55.
261. Simonneau G, et al: Selexipag: an oral, selective prostacyclin receptor agonist for the treatment of pulmonary arterial hypertension. *Eur Respir J* 2012, **40**(4):874–80.
262. NIH: *ClinicalTrials.gov*. ACT-293987 in pulmonary arterial hypertension [online]. 2011.
263. Barst RJ: PDGF signaling in pulmonary arterial hypertension. *J Clin Invest* 2005, **115**(10):2691–4.
264. Perros F, et al: Platelet-derived growth factor expression and function in idiopathic pulmonary arterial hypertension. *Am J Respir Crit Care Med* 2008, **178**(1):81–8.
265. Panos RJ, Baker SK: Mediators, cytokines, and growth factors in liver-lung interactions. *Clin Chest Med* 1996, **17**(1):151–69.
266. Schermuly RT, et al: Reversal of experimental pulmonary hypertension by PDGF inhibition. *J Clin Invest* 2005, **115**(10):2811–21.
267. Ghofrani H, et al: Imatinib in pulmonary arterial hypertension patients with inadequate response to established therapy. *Am J Respir Crit Care Med* 2010, **182**(9):1171–7.
268. Hoeper MM, et al: Imatinib mesylate as add-on therapy for pulmonary arterial hypertension: results of the randomized IMPRES study. *Circulation* 2013, **127**(10):1128–38.
269. Kerkela R, et al: Cardiotoxicity of the cancer therapeutic agent imatinib mesylate. *Nat Med* 2006, **12**(8):908–16.
270. McLaughlin VW, et al: Prognosis of pulmonary arterial hypertension: ACCP evidence-based clinical practice guidelines. *Chest* 2004, **126**(1 Suppl):78S–92S.
271. Sandoval J, et al: Graded balloon dilation atrial septostomy in severe primary pulmonary hypertension. A therapeutic alternative for patients nonresponsive to vasodilator treatment. *J Am Coll Cardiol* 1998, **32**(2):297–304.
272. Rothman A, et al: Atrial septostomy as a bridge to lung transplantation in patients with severe pulmonary hypertension. *Am J Cardiol* 1999, **84**(6):682–6.
273. Kerstein D, et al: Blade balloon atrial septostomy in patients with severe primary pulmonary hypertension. *Circulation* 1995, **91**(7):2028–35.
274. Kurzyna M, et al: Atrial septostomy in treatment of end-stage right heart failure in patients with pulmonary hypertension. *Chest* 2007, **131**(4):977–83.
275. Hosenpud JD, et al: The Registry of the International Society for Heart and Lung Transplantation: eighteenth Official Report-2001. *J Heart Lung Transplant* 2001, **20**(8):805–15.
276. Levine SM, et al: Single lung transplantation for primary pulmonary hypertension. *Chest* 1990, **98**(5):1107–15.
277. Pielsticker EJ, Martinez FJ, Rubenfire M: Lung and heart-lung transplant practice patterns in pulmonary hypertension centers. *J Heart Lung Transplant* 2001, **20**(12):1297–304.
278. Mendeloff EN, et al: Lung transplantation for pulmonary vascular disease. *Ann Thorac Surg* 2002, **73**(1):209–17. discussion 217–9.
279. Reitz BA, et al: Heart-lung transplantation: successful therapy for patients with pulmonary vascular disease. *N Engl J Med* 1982, **306**(10):557–64.

doi:10.1186/1750-1172-8-97

Cite this article as: Montani et al.: Pulmonary arterial hypertension. *Orphanet Journal of Rare Diseases* 2013 **8**:97.

Submit your next manuscript to BioMed Central and take full advantage of:

- Convenient online submission
- Thorough peer review
- No space constraints or color figure charges
- Immediate publication on acceptance
- Inclusion in PubMed, CAS, Scopus and Google Scholar
- Research which is freely available for redistribution

Submit your manuscript at  
www.biomedcentral.com/submit

