

Single spin-echo T2 relaxation times of cerebral metabolites at 14.1 T in the in vivo rat brain.

Lijing Xin, Giulio Gambarota, Cristina Cudalbu, Vladimír Mlynárik, Rolf Gruetter

► **To cite this version:**

Lijing Xin, Giulio Gambarota, Cristina Cudalbu, Vladimír Mlynárik, Rolf Gruetter. Single spin-echo T2 relaxation times of cerebral metabolites at 14.1 T in the in vivo rat brain.: T2 Relaxation Times of Cerebral Metabolites at 14.1 T. *Magnetic Resonance Materials in Physics, Biology and Medicine*, Springer Verlag, 2013, 26 (6), pp.549-54. <10.1007/s10334-013-0378-3>. <inserm-00835509>

HAL Id: inserm-00835509

<http://www.hal.inserm.fr/inserm-00835509>

Submitted on 13 Nov 2013

HAL is a multi-disciplinary open access archive for the deposit and dissemination of scientific research documents, whether they are published or not. The documents may come from teaching and research institutions in France or abroad, or from public or private research centers.

L'archive ouverte pluridisciplinaire **HAL**, est destinée au dépôt et à la diffusion de documents scientifiques de niveau recherche, publiés ou non, émanant des établissements d'enseignement et de recherche français ou étrangers, des laboratoires publics ou privés.

Single Spin-Echo T₂ Relaxation Times of Cerebral Metabolites at

14.1 T in the *in vivo* Rat Brain

Lijing Xin¹, Giulio Gambarota^{4,5}, Cristina Cudalbu², Vladimír Mlynárik² and Rolf

Gruetter^{1,2,3}

¹*Departments of Radiology, University of Lausanne, Switzerland*

²*Laboratory of Functional and Metabolic Imaging, Ecole Polytechnique Fédérale de Lausanne, Lausanne, Switzerland*

³*Departments of Radiology, University of Geneva, Geneva, Switzerland,*

⁴*INSERM, U1099, Rennes, F-35000, France*

⁵ *Université de Rennes 1, LTSI, Rennes, F-35000, France*

Running head: T₂ Relaxation Times of Cerebral Metabolites at 14.1 T

Corresponding author:

Lijing Xin, Ph.D.

Ecole Polytechnique Fédérale de Lausanne (EPFL)

EPFL-SB-IPSB-LIFMET,

Station 6, CH-1015 Lausanne

Switzerland

lijing.xin@epfl.ch

Tel. + 41 21 693 0597

Fax + 41 21 693 7960

Word count: 3349

Number of figures: 3

Number of tables: 1

Number of references: 20

Abstract

Object

To determine the single spin-echo T_2 relaxation times of uncoupled and J-coupled metabolites in rat brain *in vivo* at 14.1 T and to compare these results with those previously obtained at 9.4 T.

Materials and Methods

Measurements were performed on five rats at 14.1 T using the SPECIAL sequence and TE-specific basis-sets for LCModel analysis.

Results and Conclusion

The T_2 of singlets ranged from 98 ms to 148 ms and T_2 of J-coupled metabolites ranged from 72 ms (glutamate) to 97 ms (myo-inositol). When comparing the T_2 s of the metabolites measured at 14.1 T with those previously measured at 9.4 T, a decreasing trend was found ($p < 0.0001$). We conclude that the modest shortening of T_2 at 14.1 T has a negligible impact on the sensitivity of the ^1H MRS when performed at TE shorter than 10 ms.

Keywords: T_2 relaxation time, coupled spin systems, brain metabolites, proton magnetic resonance localized spectroscopy.

Introduction

In vivo ^1H magnetic resonance spectroscopy (MRS) allows for non-invasive investigations of neurochemical information and thus has been widely used for studies of cerebral diseases such as Alzheimer's disease, schizophrenia, stroke and others [1-3]. To preserve the maximum signal, a short TE is preferable for minimizing signal loss due to T_2 relaxation and signal modulation due to J-coupling. As an alternative, a moderate/long TE is employed to eliminate the confounding macromolecule signal from the ^1H MR spectra or to optimize the detection of specific metabolites of interest [4]. At a moderate/long TE, quantification of J-coupled cerebral metabolites is possible when taking into account the spectral shape modulation due to J-coupling, and the signal loss due to T_2 relaxation time.

The evaluation of the T_2 relaxation time has been mostly performed for singlet resonances such as that of the N-acetylaspartate acetyl moiety (at 2.01 ppm), total creatine (at 3.03 ppm and 3.93 ppm) and choline-containing compounds (at 3.2 ppm) [5,6]. For J-coupled metabolite resonances, the modulation with TE due to J-coupling represents a confounding factor in the assessment of the signal loss due to T_2 . In a previous study [7], the feasibility of measuring T_2 of J-coupled metabolites in rat brain at 9.4 T was demonstrated by using the LCModel [8] with TE-specific basis sets, which take into account the signal modulation due to J-coupling with TE. The same methodology was further used for measuring T_2 of J-coupled metabolites in human brain at 3T [9], 4T [10] and 7T [11].

To achieve a higher sensitivity and spectral resolution in ^1H MRS, the field strength (B_0) of MR scanners is steadily increasing, with an increasing number of scanners for preclinical research being installed at B_0 of 9.4 T and higher. A significant reduction in

the T_2 values of proton resonances (water, N-acetylaspartate, and total creatine) has been observed with increasing magnetic field strength and has been attributed mainly to increased dynamic dephasing due to increased local susceptibility gradients [12]. Since the quantitative contribution of different relaxation mechanisms is not clearly understood in the *in vivo* tissue, the relaxation times need to be determined experimentally at these new field strengths. Therefore, the current study carries a two-fold purpose: first, to determine the single spin-echo T_2 of uncoupled and J-coupled cerebral metabolites in rat brain *in vivo* at 14.1 T; second, to compare these results with those obtained in the previous study performed at 9.4 T [7].

Materials and Methods

Animal and phantom preparation

In vivo MRS experiments were performed on five male healthy Sprague Dawley rats (250-300 g), which were anesthetized by 1.5 – 2 % isoflurane in oxygen during the experiment. The animal was placed in a homebuilt holder and the head was stereotaxically fixed by a bite bar and a pair of ear bars. Respiration rate was monitored by a small animal monitor (SA Instruments Inc., NY, USA) and maintained at 70 - 100 breaths/min. The body temperature was measured by a rectal thermosensor and maintained at 37.5 ± 0.5 °C with the circulation of heated water. No blood gas measurement was performed during the experiment. All animal preparation procedures were performed according to local and federal guidelines and the protocols were approved by the local ethics committee.

In vivo MR experiments

All MRS experiments were carried out on a DirectDrive MR spectrometer (Varian, Palo Alto, CA, USA) interfaced to a 14.1 T, 26 cm horizontal bore magnet (Magnex Scientific, Oxford, UK). A home-built ^1H quadrature surface coil consisting of two geometrically decoupled 14 - mm - diameter single loops was used as both a transmitter and receiver.

In vivo ^1H MR spectra were acquired from a VOI ($5 \times 2.5 \times 5$ mm³) centered in the hippocampus, using a spin-echo based full intensity localized pulse sequence (SPECIAL [13]) with the following parameter settings: TE = 2.8, 20, 40, 60, 80, 110, 130, 150, 170, 200, and 300 ms, TR = 4 s, spectral bandwidth = 7 kHz, 4096 complex points and 10 FID data block each TE (16 averages/block). Spectra were acquired with increasing TEs and total experiment lasted about 2 hours. The VAPOR water

suppression technique [14] was applied in an interleaved way with series of outer volume suppression pulses. The static field inhomogeneity was optimized by first- and second-order shims using echo-planar imaging-based FASTMAP [15], which resulted in a water signal linewidth of 16 - 19 Hz. For fitting peak intensities, high-SNR spectra were used (the mean SNR of the NAA methyl peak was ~ 7 at the longest TE of 300 ms). In vitro ^1H MR spectra were acquired with a similar protocol on a phantom containing creatine (50 mM) and glutamate (50 mM).

Data Analysis

To determine the single spin-echo T_2 of J-coupled metabolites, the J-modulation of the lineshapes was taken into account by using LCModel with TE-specific basis sets that were used for analyzing the spectra acquired at each TE [7]. Nineteen metabolites (alanine, aspartate, γ -aminobutyric acid, glutamine, glutamate, glutathione, glycine, myo-inositol, lactate, scyllo-inositol, taurine, ascorbate, glucose, N-acetylaspartylglutamate, phosphorylethanolamine, glycerophosphorylcholine, N-acetylaspartate, creatine and phosphocreatine) were included in the basis sets and the corresponding spectra were generated with density matrix simulations [16], using published values of coupling constants J and chemical shifts δ [17] (T_2 relaxation was not included). Subspectra of the acetyl and aspartate moieties of N-acetylaspartate (NAA), and the CH_3 and CH_2 groups of total creatine (tCr), were prepared as separate components in the basis sets for measuring T_2 of individual chemical groups in the same molecule. Macromolecule spectra were obtained as previously described [18] and included as one component in the basis sets of each TE. Metabolite concentrations obtained after the LCModel quantification were fitted to a monoexponential function

using curve-fitting tool in Matlab (Version 7.1, The MathWorks, Inc., Natick, MA, USA). The quality of the T_2 fit was assessed by the coefficient of determination (R^2). Only the T_2 of metabolite resonances with $R^2 > 0.95$ are reported here.

Results

In spectra measured *in vitro*, the singlet resonances of creatine at 3.03 ppm and 3.92 ppm decayed in amplitude with increasing TE, while resonances of J-coupled metabolites i.e. glutamate (Glu) displayed both a decrease in amplitude and a modulation in their shape, e.g., the resonances at 2.34 ppm refocused at TE = 110 ms (data not shown). Spectral modulations of glutamate were successfully mimicked by spin simulations (data not shown), which validates the accuracy of the spectral simulations.

In vivo water-suppressed ¹H MR spectra and their corresponding LCModel fits show excellent correspondence at different TEs (Fig. 1). The glutamate CH₂ multiplet at 2.34 ppm and the myo-inositol (Ins) resonance peaks at 3.61 ppm developed from an absorption shape (at TE = 2.8 ms) to a dispersion shape (at TE = 40 ms) and then again to an absorption line appearance (at TE = 80/110 ms) (Fig.1). The high SNR at 14.1 T allowed for reliable measurement of tCr, total choline (tCho) and NAA singlet resonance with CRLB < 5%, and Ins, taurine (Tau), Glu and glutathione (GSH) with CRLB < 30% at most TEs.

Curve fitting of apparent concentrations for singlets (NAA CH₃ at 2.01 ppm) and J-coupled metabolites (Ins, Glu) suggested that the decrease of signal intensities with TE is largely described by a mono-exponential decay (Fig. 2). The T₂ of singlets ranged from 98 ms to 148 ms, where the T₂ of tCr (CH₂) is the shortest for singlets and the T₂ of tCho (dominated by methyl group) is the longest. For J-coupled cerebral metabolites, T₂ ranged from 72 ms (Glu) to 97 ms (Ins, Table 1).

When comparing the T_2 s of the metabolites measured at 14.1 T with those previously measured at 9.4 T [7], a decreasing trend was found ($p < 0.0001$, two-way ANOVA)(Fig. 3). However, the decrease in T_2 was rather small (on average 10%) except for NAA (30%) and Ins (38%) (Fig. 3).

Discussion

The present study reports the T_2 relaxation times of singlets and J-coupled metabolites including NAA(CH₃), tCr(CH₃), tCr(CH₂), tCho, Ins, Glu, GSH and Tau at 14.1 T using single spin-echo excitation and LCModel analysis with TE-specific basis-sets.

Both in vitro and in vivo spectra (Fig. 1) demonstrated that metabolites with singlet resonances decrease with TE in spectral amplitude while J-coupled metabolites such as Glu, vary with TE in both amplitude and spectral pattern. When considering the spectral pattern modulation with TE in the basis sets for LCModel analysis, the apparent concentration decays mono-exponentially with TE due to signal loss of T_2 relaxation time (Fig. 2), which allows for the quantification of the T_2 relaxation times of J-coupled metabolites.

Since the signal intensity (i.e., the integral of resonance peaks) varies with TE for J-coupled metabolites, spectra measured at all TEs cannot be optimal for the T_2 quantification of all metabolites. For instance, the signal intensity of Glu and Ins peaks were close to zero around TE = 40, 60 ms and TE = 40, 130, 150 ms, respectively, which might decrease the measurement accuracy. Therefore, apparent concentrations obtained at those TEs in fit plots (Fig. 2) demonstrate larger deviations from the fitting curve. However, when excluding those spectra from the fit data, the precision of the fit was improved, while no substantial difference was found for T_2 values (within the fitting error).

Data acquisition was performed with SPECIAL, which is a localization method based on a single spin-echo acquisition scheme. During the inter-pulse delay, magnetization components could not be completely refocused by the refocusing pulse due to dynamic dephasing induced by diffusion in the inhomogeneous local magnetic field and chemical exchange [12]. Therefore, signal loss increased with the length of TE and thus reported T_2 values in this study were shorter than the intrinsic T_2 relaxation times. T_2 values of well-represented metabolites such as NAA(CH₃), tCr and tCho measured at 14.1 T in this study were shorter than those reported at 4.7 [19], 9.4 and 11.7 T [6] in healthy rat brain. The reduction of T_2 relaxation times with increasing magnetic field strength can be ascribed to the increased loss of spin coherence due to molecular diffusion across local magnetic field gradients, which are proportional to the magnetic field strength. The contribution of chemical exchange might be negligible for non-exchanging protons of NAA(CH₃), tCr and tCho.

The measured apparent T_2 relaxation times vary with the pulse sequence applied. The CPMG-type of sequence such as LASER or CP-LASER suppresses signal dephasing and results in a longer T_2 values of metabolites compared to PRESS or single SE sequence [12]. In addition, the local magnetic gradient could be altered by the level of blood oxygenation due to different tissue composition and physiology, which leads to the change in T_2 . For avoiding the aforementioned concern in comparing T_2 values at 14.1 T to those previously reported at 9.4 T, the measurement at 14.1 T was performed on an identical Varian INOVA spectrometer using the same acquisition protocols (the pulse sequence with the same RF pulses and TEs), RF surface coils with the same shape and size, the VOI having similar tissues composition, and the same data analysis

(LCModel fit with TE-specific basis-sets) as in the previous measurement at 9.4 T. Although the blood gas was not monitored during the experiment, the respiration rate was maintained within the physiological range, the same way in both 9.4 T and 14.1 T experiments. Therefore, T_2 difference introduced by different degree of blood oxygenation should be negligible and any deviations among individual animals should be averaged out.

The modest decrease in T_2 s at 14.1 T compared to those we previously reported at 9.4 T (Fig. 3) is consistent with previous studies [12,6]. The degree of T_2 changes might reflect different microenvironment or chemical exchange contribution of individual metabolites, which leads to different degree of dynamic dephasing.

The decrease in T_2 with increasing field strength can impact the SNR increase that is gained when performing MRS experiments at ultra high magnetic field. Note that despite the shortened T_2 at 14.1 T, the mean T_2 of metabolites (104 ms) at 14.1 T leads to a signal loss of 10%, when using $TE = 10$ ms, which is within the biological variation. Therefore, the effect on the metabolite quantification errors and SNR is expected to be negligible when using a $TE < 10$ ms.

For the quantitation of metabolites at a long TE, such as, for example, in editing techniques [20] an internal reference (tCr methyl group) was sometimes employed when assuming similar T_2 impact on edited metabolites and the internal reference. At 14.1 T, the difference in T_2 s of J-coupled metabolites (Glu, Tau, Ins and GSH) and that of the tCr methyl resonance should be taken into account when tCr methyl peak is used as a

reference in the quantification of J-coupled metabolites using long-TE editing technique.

Conclusion

We conclude that the T_2 relaxation times of uncoupled and coupled cerebral metabolites in rat brain at 14.1 T showed a decreasing trend compared to 9.4 T, however, the impact is negligible on the quantification of neurochemical profile performed at short echo times.

Abbreviations used:

tCho, total choline (Glycerophosphorylcholine + Phosphorylcholine); tCr, total creatine (phosphocreatine + creatine); Cr, creatine; GSH, glutathione; Glu, glutamate; Ins, myo-inositol; NAA, N-acetylaspartate; Tau, taurine; VOI, volume of interest; SPECIAL, SPin ECho, full Intensity Acquired Localized spectroscopy.

Acknowledgements

This study was supported by Centre d'Imagerie BioMédicale (CIBM) of the UNIL, UNIGE, HUG, CHUV, EPFL, the Leenaards and Jeantet Foundations.

References

1. Pereira AC, Saunders DE, Doyle VL, Bland JM, Howe FA, Griffiths JR, Brown MM (1999) Measurement of initial N-acetyl aspartate concentration by magnetic resonance spectroscopy and initial infarct volume by MRI predicts outcome in patients with middle cerebral artery territory infarction. *Stroke* 30 (8):1577-1582
2. Huang W, Alexander GE, Chang L, Shetty HU, Krasuski JS, Rapoport SI, Schapiro MB (2001) Brain metabolite concentration and dementia severity in Alzheimer's disease: a ¹H MRS study. *Neurology* 57 (4):626-632
3. das Neves Duarte JM, Kulak A, Gholam-Razaei MM, Cuenod M, Gruetter R, Do KQ (2012) N-acetylcysteine normalizes neurochemical changes in the glutathione-deficient schizophrenia mouse model during development. *Biol Psychiatry* 71 (11):1006-1014
4. Gambarota G, Xin L, Perazzolo C, Kohler I, Mlynarik V, Gruetter R (2008) In vivo ¹H NMR measurement of glycine in rat brain at 9.4 T at short echo time. *Magn Reson Med* 60 (3):727-731
5. Mlynarik V, Gruber S, Moser E (2001) Proton T (1) and T (2) relaxation times of human brain metabolites at 3 Tesla. *NMR Biomed* 14 (5):325-331
6. de Graaf RA, Brown PB, McIntyre S, Nixon TW, Behar KL, Rothman DL (2006) High magnetic field water and metabolite proton T1 and T2 relaxation in rat brain in vivo. *Magn Reson Med* 56 (2):386-394
7. Xin L, Gambarota G, Mlynarik V, Gruetter R (2008) Proton T2 relaxation time of J-coupled cerebral metabolites in rat brain at 9.4 T. *NMR Biomed* 21 (4):396-401
8. Provencher SW (1993) Estimation of metabolite concentrations from localized in vivo proton NMR spectra. *Magn Reson Med* 30 (6):672-679
9. Ganji SK, Banerjee A, Patel AM, Zhao YD, Dimitrov IE, Browning JD, Brown ES, Maher EA, Choi C (2011) T2 measurement of J-coupled metabolites in the human brain at 3T. *NMR Biomed* 25 (4):523-529
10. Deelchand DK, Henry PG, Ugurbil K, Marjanska M (2012) Measurement of transverse relaxation times of J-coupled metabolites in the human visual cortex at 4 T. *Magn Reson Med* 67 (4):891-897
11. Marjanska M, Auerbach EJ, Valabregue R, Van de Moortele PF, Adriany G, Garwood M (2012) Localized ¹H NMR spectroscopy in different regions of human brain in vivo at 7 T: T2 relaxation times and concentrations of cerebral metabolites. *NMR Biomed* 25 (2):332-339
12. Michaeli S, Garwood M, Zhu XH, DelaBarre L, Andersen P, Adriany G, Merkle H, Ugurbil K, Chen W (2002) Proton T2 relaxation study of water, N-acetylaspartate, and creatine in human brain using Hahn and Carr-Purcell spin echoes at 4T and 7T. *Magn Reson Med* 47 (4):629-633
13. Mlynarik V, Gambarota G, Frenkel H, Gruetter R (2006) Localized short-echo-time proton MR spectroscopy with full signal-intensity acquisition. *Magn Reson Med* 56 (5):965-970
14. Tkac I, Starcuk Z, Choi IY, Gruetter R (1999) In vivo ¹H NMR spectroscopy of rat brain at 1 ms echo time. *Magn Reson Med* 41 (4):649-656
15. Gruetter R, Tkac I (2000) Field mapping without reference scan using asymmetric echo-planar techniques. *Magn Reson Med* 43 (2):319-323
16. Gambarota G, van der Graaf M, Klomp D, Mulkern RV, Heerschap A (2005) Echo-time independent signal modulations using PRESS sequences: A new approach to spectral editing of strongly coupled AB spin systems. *J Magn Reson* 177 (2):299-306

17. Govindaraju V, Young K, Maudsley AA (2000) Proton NMR chemical shifts and coupling constants for brain metabolites. *NMR Biomed* 13 (3):129-153
18. Mlynarik V, Cudalbu C, Xin L, Gruetter R (2008) ¹H NMR spectroscopy of rat brain in vivo at 14.1 Tesla: improvements in quantification of the neurochemical profile. *J Magn Reson* 194 (2):163-168
19. van der Toorn A, Dijkhuizen RM, Tulleken CA, Nicolay K (1995) T1 and T2 relaxation times of the major ¹H-containing metabolites in rat brain after focal ischemia. *NMR Biomed* 8 (6):245-252
20. Terpstra M, Ugurbil K, Tkac I (2010) Noninvasive quantification of human brain ascorbate concentration using ¹H NMR spectroscopy at 7 T. *NMR Biomed* 23 (3):227-232

Table 1. T₂ relaxation times (mean ± sd) of metabolites in rat brain at 14.1 T. R² is the coefficient of determination (tCho = total choline, NAA = N-acetylaspartate, tCr = total creatine, Ins = myo-inositol, GSH = glutathione , Tau = taurine, Glu = glutamate).

Metabolite	T ₂ (ms)	R ²
NAA(CH ₃)	142 ± 7	0.988
tCr(CH ₃)	107 ± 2	0.998
tCr(CH ₂)	98 ± 2	0.996
tCho	148 ± 14	0.958
Ins	97 ± 6	0.983
GSH	87 ± 13	0.948
Tau	82 ± 7	0.965
Glu	72 ± 8	0.958

Figure caption

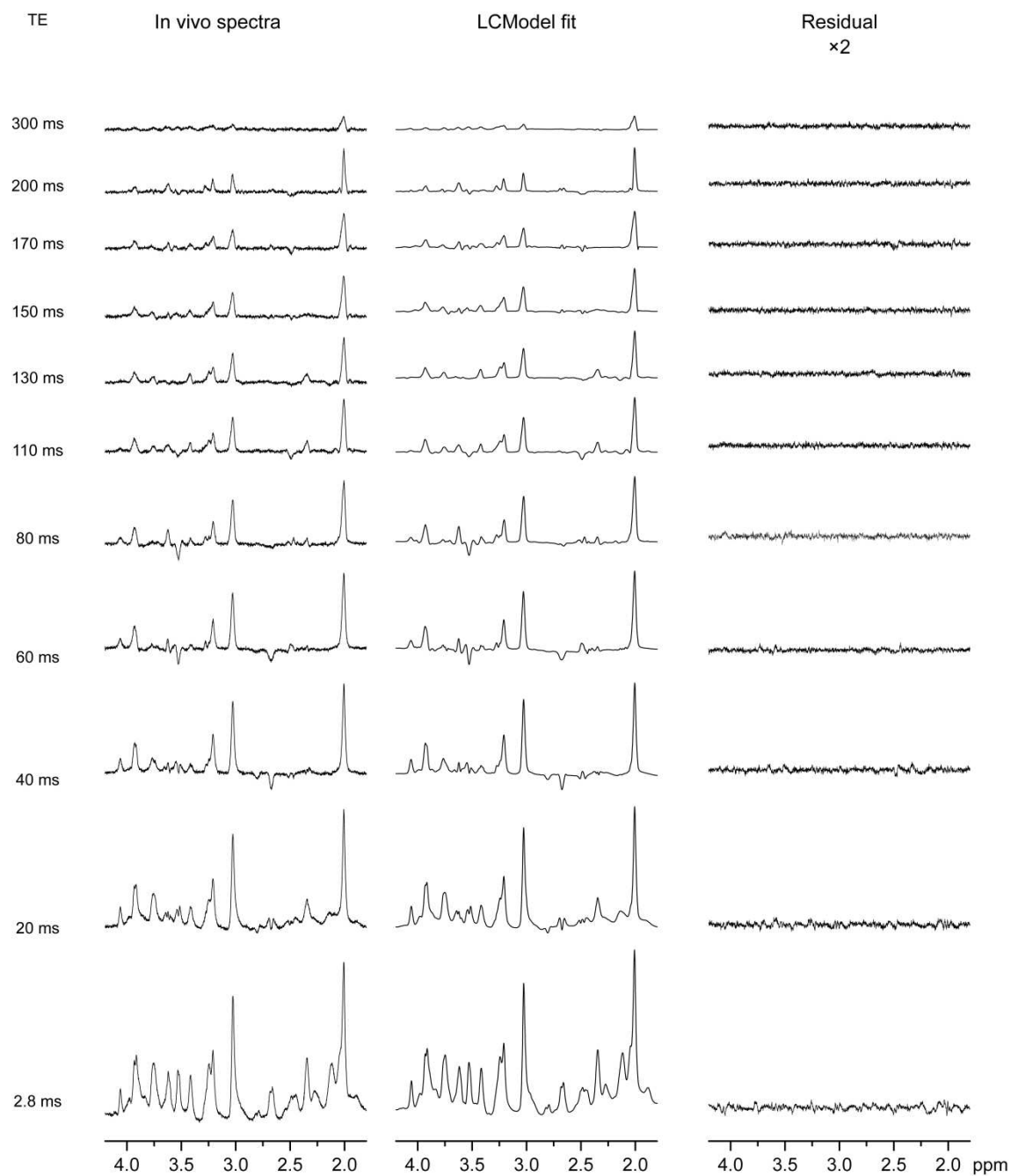


Fig. 1. A series of in vivo spectra, the corresponding LCModel fits and the fitting residuals for TE ranging from 2.8 ms to 300 ms.

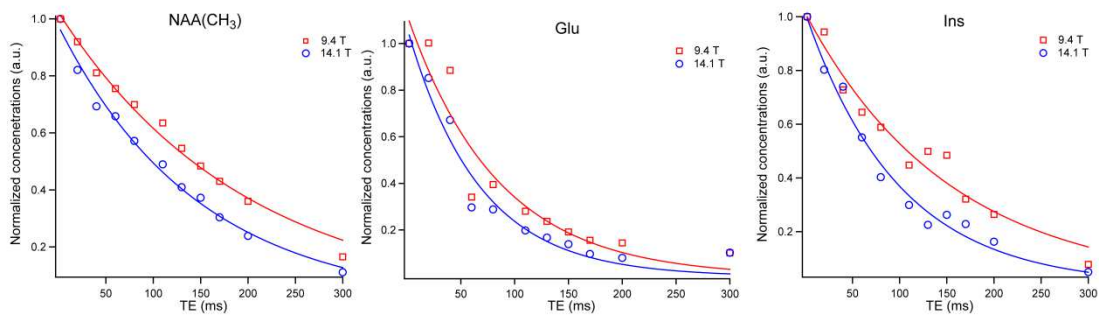


Fig. 2. Plots of the normalized apparent concentration as a function of TE of the NAA singlet, myo-inositol and glutamate at 14.1 T (circles) and 9.4 T (squares). Solid lines represent the exponential fit. Data points for 9.4T were taken from previously published study [7].

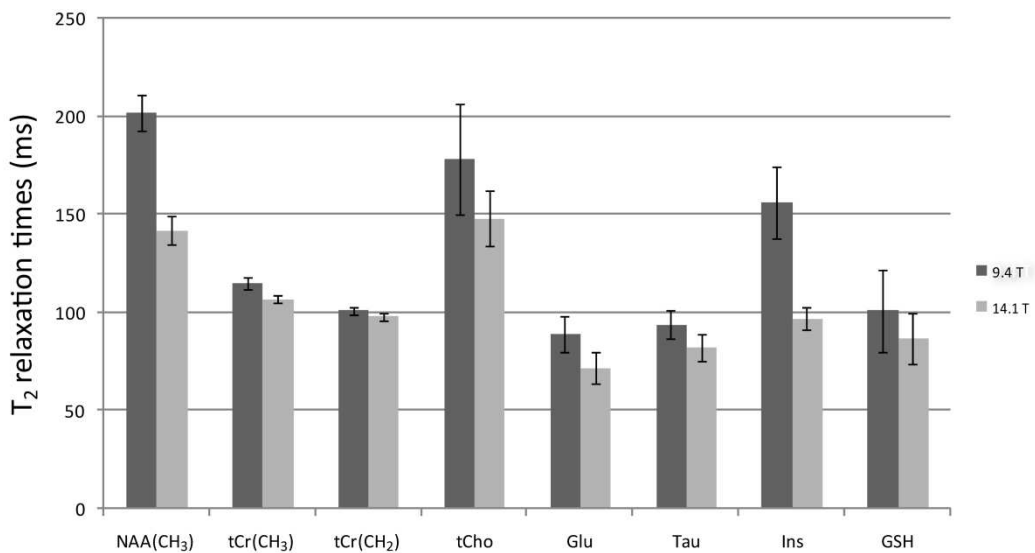


Fig. 3. T₂ relaxation times (mean ± sd) of metabolites resonances measured at 14.1 T and 9.4 T (from previous study [7]) using same data acquisition parameters and data analysis methods (LCModel fit with TE-specific basis-sets).

