

## Mutations in ASXL1 are associated with poor prognosis across the spectrum of malignant myeloid diseases.

Véronique Gelsi-Boyer, Mandy Brecqueville, Raynier Devillier, Anne Murati, Marie-Joelle Mozziconacci, Daniel Birnbaum

### ► To cite this version:

Véronique Gelsi-Boyer, Mandy Brecqueville, Raynier Devillier, Anne Murati, Marie-Joelle Mozziconacci, et al.. Mutations in ASXL1 are associated with poor prognosis across the spectrum of malignant myeloid diseases.. Journal of Hematology

Oncology, 2012, 5 (1), pp.12. <10.1186/1756-8722-5-12>. <inserm-00698796>

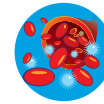
**HAL Id: inserm-00698796**

**<http://www.hal.inserm.fr/inserm-00698796>**

Submitted on 17 May 2012

**HAL** is a multi-disciplinary open access archive for the deposit and dissemination of scientific research documents, whether they are published or not. The documents may come from teaching and research institutions in France or abroad, or from public or private research centers.

L'archive ouverte pluridisciplinaire **HAL**, est destinée au dépôt et à la diffusion de documents scientifiques de niveau recherche, publiés ou non, émanant des établissements d'enseignement et de recherche français ou étrangers, des laboratoires publics ou privés.



REVIEW

Open Access

# Mutations in *ASXL1* are associated with poor prognosis across the spectrum of malignant myeloid diseases

Véronique Gelsi-Boyer<sup>1,2,3,4\*</sup>, Mandy Brecqueville<sup>1,2</sup>, Raynier Devillier<sup>1,2</sup>, Anne Murati<sup>1,3</sup>, Marie-Joelle Mozziconacci<sup>1,3</sup> and Daniel Birnbaum<sup>1</sup>

## Abstract

The *ASXL1* gene is one of the most frequently mutated genes in malignant myeloid diseases. The ASXL1 protein belongs to protein complexes involved in the epigenetic regulation of gene expression. *ASXL1* mutations are found in myeloproliferative neoplasms (MPN), myelodysplastic syndromes (MDS), chronic myelomonocytic leukemia (CMML) and acute myeloid leukemia (AML). They are generally associated with signs of aggressiveness and poor clinical outcome. Because of this, a systematic determination of *ASXL1* mutational status in myeloid malignancies should help in prognosis assessment.

**Keywords:** *ASXL1*, Gene mutations, Myeloid diseases

Mutations in the *ASXL1* (additional sex combs like 1) gene were first reported in 2009 in myelodysplastic syndromes [1]. *ASXL1* maps to chromosome region 20q11, close to the *DNMT3B* gene, and belongs to a family of three paralogs. *ASXL1* comprises 12 exons and is expressed in most hematopoietic cell types.

## Function of the ASXL1 protein

*ASXL1* codes for a nuclear protein of 1084 residues characterized by an N-terminal helix-turn-helix domain, HARE-HTH [2], and an unusual C-terminal plant homeodomain (PHD), which may bind methylated lysines (Figure 1). The central part of ASXL1 contains an ASXH globular domain that may interact with a polycomb-associated deubiquitinase (DUB) [2,3]. ASXL1 regulates epigenetic marks and transcription through interaction with polycomb complex proteins and various transcription activators and repressors [3-5]. In *Drosophila*, ASX forms a complex with the ubiquitin carboxy-terminal hydrolase calypso to constitute the recently identified polycomb repressive deubiquitinase (PR-DUB) complex [3,6]. Human wild-type ASXL1 associates with

the calypso ortholog BAP1 [7]. The calypso/BAP1 DUB deubiquitylates K119ub on histone H2A, leading to gene repression. However, the role of ASXL1 in leukemogenesis does not seem to be mediated by the DUB complex [7]. Recent data have shown that ASXL1 interacts with components of the polycomb complex PRC2, namely EZH2 and SUZ12, two proteins involved in the deposition of H3K27me3 histone repressive marks. These two PRC2 components are also mutated in myeloid malignant diseases [8-11]. Inhibition of ASXL1 function leads to loss of H3K27me3 histone marks. ASXL1 role could be to recruit the PRC2 complex to known leukemogenic loci such as *HOXA* genes [7]. ASXL1 also associates with HP1 $\alpha$ /CBX5, a component of the heterochromatin repressive complex [6,12]. HP1 $\alpha$  binds to histone H3. JAK2 phosphorylates histone H3 and excludes HP1 $\alpha$  from chromatin [13]. Thus, a potential functional link may exist between *ASXL1* and *JAK2* mutations but this remains to be demonstrated.

The functions of the other ASXL proteins are poorly defined. ASXL2 has been shown to regulate heart [14] and bone development, as well as adipogenesis. Mouse ASXL2 has been identified as a regulator of bone mineral density and osteoclastogenesis [15] and whereas ASXL1 represses, ASXL2 increases the expression of

\* Correspondence: gelsiv@marseille.fnclcc.fr

<sup>1</sup>Centre de Recherche en Cancérologie de Marseille; Laboratoire d'Oncologie Moléculaire; UMR1068 Inserm, Institut Paoli-Calmettes, Marseille, France  
Full list of author information is available at the end of the article



**Table 1 Mutations in ASXL1 gene in published studies**

Selected Ref.	MDS n (%)	CMML n (%)	MPN n (%)	Secondary AML n (%)	De novo AML n (%)
*Abdel-Wahab et al., [25]				12/63 (19.3)	
*Abdel-Wahab et al., [18]		3/24 (12.5)	3/46 PMF (6.5)		
Béjar et al., [21]	63/439 (14.4)				
Brecqueville et al., [26]			17/149 (11.4): 6/30 PMF (20), 2/30 PV (7), 2/53 ET (4),		
Boultonwood et al., [5]	28/182 (15.4)	17/51 (33.3)		9/40 (22.5)	8/27 (29.6)
Boultonwood et al., [27]			+6/41 (CML) (14.6)		
Carbuccia et al., [28]			5/64 (7.8)		
Carbuccia et al., [20]				9/17 (58)	3/46 (6)
Chou et al., [29]					54/501 (10.8)
Gelsi-Boyer et al., [1]	4/35 (11.4)	17/39 (43.6)			
Gelsi-Boyer et al., [30]		25/53 (47.2)			
Grossmann et al., [31]		41/79 (52)			
Jankowska et al., [32]		24/52 (46)			
Pratcorona et al., [33]				3/24 (12.5)	35/775 (4.5)
Ricci et al., [34]			23/42 PMF (54.8)		
Rocquain et al., [22]	13/65 (20)			9/18 (50)	3/46 (6.5)
Shen et al., [35]					27/605 (4.5)
Stein et al., [36]			12/47 PMF (25.5) 1/42 PV (2)		
Thol et al., [37]	40/193 (20.7)				
<b>Total*</b>	<b>148/914 (16.2)</b>	<b>124/274 (45)</b>	<b>41/119 PMF (34.5)</b>	<b>30/99 (30.3)</b>	<b>130/2000 (6.5)</b>

\* not included in final count because p.Gly646TrpfsX12 had not been taken into account; + including CML cases

frequent in CMML (~ 45%). In MPNs, they are frequent in primary myelofibrosis (PMF)(34.5%) and rare in polycythemia vera (PV) or essential thrombocythemia (ET). In AML, they are found in secondary (30%) rather than in *de novo* cases (6.5%), and in AML with normal karyotype *ASXL1* mutations are mutually exclusive with *NPM1* mutations [20]. *ASXL1* is the second most frequently mutated gene in MDSs after *TET2* [21]. In MDSs, *ASXL1* mutations are more frequent in refractory anemia with excess of blasts (RAEB) than in the other forms such as refractory anemia with ring sideroblasts (RARS) [1,5,22]. *ASXL1* mutations are further detected in rare cases of juvenile myelomonocytic leukemia (JMML) [23] and in RARS-T [24].

With the exception of *NPM1* and *FLT3*, it seems that *ASXL1* mutations coincide with mutations in many known genes including *EZH2* [18], *IDH1/2*, *RUNX1* and *TET2* [21,22]. Although *ASXL1* functions are related to the PRC2 complex, which includes *EZH2*, *ASXL1* and *EZH2* mutations are not mutually exclusive [18,38]. *ASXL1* mutations can also cooperate with mutations in genes encoding signaling (*CBL*, *JAK2*, *NF1*, *RAS*) and splicing proteins (*SF3B1*, *SRSF2*, *U2AF35*). For example, in MDSs, *ASXL1* mutations are more frequent in *U2AF35*-mutated patients than in *U2AF35* wild-type patients [39]. In MPNs, *ASXL1* mutations are found with the same frequency in *JAK2V617F* and *JAK2* wild-type cases [26,36]. In MDSs, *ASXL1* mutations are often

associated with *RUNX1* mutations, and, in AMLs, with *RUNX1* and *CEBPA*. [29,33,40].

### Other alterations in ASXL1, ASXL2 and ASXL3

Few deletions of the gene have been reported and *ASXL1* is generally not included in the more telomeric 20q13 deletion that is often observed in myeloid diseases. The *ASXL1* gene can be translocated and fused to the *PAX5* gene in acute lymphoblastoid leukemia [41] and altered by germ-line mutations in the Bohring-Opitz syndrome; this severe syndrome leads to death at an early age preventing to know whether susceptibility to hematopoietic diseases might result from *ASXL1* germ-line mutations [42]. In recent genome sequencing studies rare mutations in *ASXL1* and *ASXL3* have also been found in chronic lymphocytic leukemia [43] but not in T-cell acute leukemia [44]. Mutations in *ASXL2* and *ASXL3* have not been found in myeloid diseases so far, but *ASXL2-MYST3* and *EPC1-ASXL2* fusions have been identified in myelodysplastic syndrome and T-cell acute leukemia, respectively [45,46]. Both *MYST3* and *EPC1* are epigenetic regulators and these fusion proteins probably disrupt epigenetic protein complexes.

### Animal models of ASXL1 loss

In a first model of *Asxl1* gene knock-out in the mouse *ASXL1* loss mildly perturbed myelopoiesis but did not trigger an actual hematological malignancy [47].

However, the effect of the absence of ASXL1 protein may have been masked by partially penetrant perinatal lethality. In another, more recent model of conditional *Asxl1* gene knock-out, the animals developed a strong hematopoietic phenotype consistent with an MDS with myeloproliferative features. In cooperation with NRAS oncogenic mutation the absence of ASXL1 triggered an MDS/MPN. These observations were confirmed by experiments in hematopoietic cells using shRNA directed against *ASXL1*, which were highly coherent with the expected role of ASXL1 in leukemogenesis [7].

### ASXL1 mutations in disease evolution

Like *TET2* mutations, *ASXL1* mutations are found in chronic and acute stages of myeloid malignancies. In a study of MPNs, with the exception of a single patient who acquired both *ASXL1* and *TET2* mutations, all patients with *ASXL1* mutation at leukemic transformation already had *ASXL1* mutation at the chronic stage [25]. In a series of secondary AML with multilineage dysplasia we found that in cases resulting from a transformation of a known MDS the same *ASXL1* mutation was present at both the chronic and acute stages (Devillier et al., submitted). These observations suggest that *ASXL1* mutations may constitute early hits in leukemogenesis and precede other alterations such as *JAK2* and *TET2* mutations [24,25,28]. However, there is also evidence to suggest that the opposite is true in some cases. In MPNs, for example, the proportion of *ASXL1* mutations is higher in post-PV myelofibrosis (MF) and post-ET MF than in PV and ET. This suggests that the *ASXL1* mutation may follow a *JAK2* mutation and could therefore help predict the risk of evolution from PV and ET to MF [26,36,48]. As such, *ASXL1* mutations may play a crucial role in the pathogenesis of PMF, as well as in the molecular progression from the chronic phase of a previous PV or ET to MF. Finally, in MDSs and CMML, *ASXL1* mutations seem to be present in chronic phases and precede transformation and in rare cases, *ASXL1* mutations can be lost or acquired during relapse of *de novo* AML [29].

### ASXL1 mutations in disease outcome

A number of studies have linked *ASXL1* mutations to the outcome of malignant myeloid diseases. In a study of MPNs based on the DIPSS-plus score [49] (Dynamic International Prognostic Scoring System for primary myelofibrosis), *ASXL1* mutation tended to be associated with an aggressive disease and a poor overall survival [26]. In a large study of PMF patients *ASXL1* mutations were associated with shorter overall survival [50]. In CMML, the presence of an *ASXL1* mutation could help predict transformation to AML [30]. In MDSs, *ASXL1* mutations are associated with a reduced time to progression in AML and constitute an independent prognostic marker [37]. Finally,

a study of 18 genes in a large cohort of MDSs showed that mutations in 5 genes had prognostic impact: *TP53*, *EZH2*, *ETV6*, *RUNX1* and *ASXL1* [21]. Coupled with the standardized international prognostic scoring system (IPSS), mutations in these five genes could help refine the prognosis evaluation of MDSs.

By contrast, a study of a large cohort of 605 AML cases without cytogenetic prognostic markers other than 11q23 abnormalities, reported that *ASXL1* mutations were not associated with outcome [35]. However, they were associated with shorter overall survival in patients with intermediate-risk AML [29,33]. A recent study of 476 cases with intermediate-risk *de novo* AML showed that *ASXL1* mutations have a major impact on outcome [51]. According to the current European LeukemiaNet (ELN) guidelines for the diagnosis and management of AML, AMLs with normal karyotype are classified into two genetic categories based on their *NPM1*, *FLT3*-ITD and *CEBPA* mutation status: the ELN Favorable category is defined as mutated *CEBPA* and/or mutated *NPM1* without *FLT3*-IT; all remaining cases (ie, those with wild-type *CEBPA*, and wild-type *NPM1* with or without *FLT3*-ITD or mutated *NPM1* with *FLT3*-ITD) form the ELN Intermediate-I category [52,53]. *ASXL1* mutations have been associated with inferior survival among ELN Favorable, but not among ELN Intermediate-I patients [40]. Taken together, these data show that *ASXL1* mutations have prognostic value in certain subgroups of AML patients.

### Conclusion

In almost all studies, and whatever the type of myeloid malignancy, *ASXL1* mutations are associated with adverse features including, but not limited to myelodysplasia, myelofibrosis or progression to AML. Systematic detection of *ASXL1* mutations could thus help in the assessment of disease and should perhaps be implemented in routine practice, whether associated with already systematically-surveyed mutations (*CEBPA*, *JAK2*, *FLT3*, *NPM1*) or in upcoming systematic genome analyses.

### Acknowledgements

Our work in this field is supported by Inserm, Institut Paoli-Calmettes and grants from the Association pour la Recherche sur le Cancer (DB) and Association Laurette Fugain (MJM 2010).

### Author details

<sup>1</sup>Centre de Recherche en Cancérologie de Marseille; Laboratoire d'Oncologie Moléculaire; UMR1068 Inserm, Institut Paoli-Calmettes, Marseille, France. <sup>2</sup>Aix-Marseille Univ, Marseille, France. <sup>3</sup>Département de BioPathologie, Institut Paoli-Calmettes, Marseille, France. <sup>4</sup>Départements d'Oncologie Moléculaire et de Biopathologie, CRCM, Institut Paoli-Calmettes, UMR1068 Inserm, 27 Bd. Leï Roure, 13009 Marseille, France.

### Authors' contributions

All authors have contributed ideas, discussions, and have participated in the writing of the manuscript. All authors read and approved the final manuscript

### Competing interests

The authors declare that they have no competing interests.

Received: 31 January 2012 Accepted: 21 March 2012

Published: 21 March 2012

### References

- Gelsi-Boyer V, Trouplin V, Adelaide J, Bonansea J, Cervera N, Carbuccia N, Lagarde A, Prebet T, Nezri M, Sainy D, Olschwang S, Xerri L, Chaffanet M, Mozziconacci MJ, Vey N, Birnbaum D: **Mutations of polycomb-associated gene ASXL1 in myelodysplastic syndromes and chronic myelomonocytic leukaemia.** *Br J Haematol* 2009, **145**:788-800.
- Aravind L, Iyer LM: **The HARE-HTH and associated domains: Novel modules in the coordination of epigenetic DNA and protein modifications.** *Cell Cycle* 2012, **11**(1):119-131.
- Scheuermann JC, de Ayala Alonso AG, Oktaba K, Ly-Hartig N, McGinty RK, Fraterman S, Wilm M, Muir TW, Müller J: **Histone H2A deubiquitinase activity of the Polycomb repressive complex PR-DUB.** *Nature* 2010, **465**:243-247.
- Cho YS, Kim EJ, Park UH, Sin HS, Um SJ: **Additional sex comb-like 1 (ASXL1), in cooperation with SRC-1, acts as a ligand-dependent coactivator for retinoic acid receptor.** *J Biol Chem* 2006, **281**:17588-17598.
- Boulwood J, Perry J, Pellagatti A, Fernandez-Mercado M, Fernandez-Santamaria C, Calasanz MJ, Larrayoz MJ, Garcia-Delgado M, Giagounidis A, Malcovati L, Della Porta MG, Jädersten M, Killick S, Hellström-Lindberg E, Cazzola M, Wainscoat JS: **Frequent mutation of the polycomb-associated gene ASXL1 in the myelodysplastic syndromes and in acute myeloid leukemia.** *Leukemia* 2010, **24**:1062-1065.
- Beisel C, Paro R: **Silencing chromatin: comparing modes and mechanisms.** *Nat Rev Genet* 2011, **12**:123-135.
- Abdel-Wahab O, Adli M, Saunders L, Gao J, Shih AH, Pandey S, Jaffe J, Zhao X, Perna F, Carroll M, Melnick A, Nimer SD, Aifantis I, Bernstein B, Levine RL: **ASXL1 Mutations Promote Myeloid Transformation Through Inhibition of PRC2-Mediated Gene Repression.** Abstract 405, *ASH December 2011. Session: 603 Oncogenes and Tumor Suppressors: From Genomic-based Discovery to Functional Validation*.
- Ernst T, Chase AJ, Score J, Hidalgo-Curtis CE, Bryant C, Jones AV, Waghorn K, Zoi K, Ross FM, Reiter A, Hochhaus A, Drexler HG, Duncombe A, Cervantes F, Oscier D, Boulwood J, Grand FH, Cross NC: **Inactivating mutations of the histone methyltransferase gene EZH2 in myeloid disorders.** *Nat Genet* 2010, **42**:722-726.
- Nikoloski G, Langemeijer SM, Kuiper RP, Knops R, Massop M, Tönnissen ER, van der Heijden A, Scheele TN, Vandenbergh P, de Witte T, van der Reijden BA, Jansen JH: **Somatic mutations of the histone methyltransferase gene EZH2 in myelodysplastic syndromes.** *Nat Genet* 2010, **42**:665-667.
- Brecqueville M, Cervera N, Adelaide J, Rey J, Carbuccia N, Chaffanet M, Vey N, Murati A: **Mutations and deletions of the SUZ12 polycomb gene in myeloproliferative neoplasms.** *Blood Cancer Journal* 2011, **1**:33.
- Score J, Hidalgo-Curtis C, Jones AV, Winkelmann N, Skinner A, Ward D, Zoi K, Ernst T, Stegelmann F, Döhner K, Chase A, Cross NC: **Inactivation of polycomb repressive complex 2 components in myeloproliferative and myelodysplastic/myeloproliferative neoplasms.** *Blood* 2012, **119**:1208-1213.
- Lee SW, Cho YS, Na JM, Park UH, Kang M, Kim EJ, Um SJ: **ASXL1 represses retinoic acid receptor-mediated transcription through associating with HP1 and LSD1.** *J Biol Chem* 2010, **285**:18-29.
- Dawson MA, Bannister AJ, Gottgens B, Foster SD, Bartke T, Green AR, Kouzarides T: **JAK2 phosphorylates histone H3Y41 and excludes HP1alpha from chromatin.** *Nature* 2009, **461**:819-822.
- Baskind HA, Na L, Ma Q, Patel MP, Geenen DL, Wang QT: **Functional conservation of Asxl2, a murine homolog for the Drosophila enhancer of trithorax and polycomb group gene Asx.** *PLoS One* 2009, **4**:e4750.
- Farber CR, Bennett BJ, Orozco L, Zou W, Lira A, Kostem E, Kang HM, Furlotte N, Berberyan A, Ghazalpour A, Suwanwela J, Drake TA, Eskin E, Wang QT, Teitelbaum SL, Lusis AJ: **Mouse genome-wide association and systems genetics identify Asxl2 as a regulator of bone mineral density and osteoclastogenesis.** *PLoS Genet* 2011, **7**:e1002038.
- Park UH, Yoon SK, Park T, Kim EJ, Um SJ: **Additional sex comb-like (ASXL) proteins 1 and 2 play opposite roles in adipogenesis via reciprocal regulation of peroxisome proliferator-activated receptor (gamma).** *J Biol Chem* 2011, **286**:1354-1363.
- Katoh M, Katoh M: **Identification and characterization of human CXXC10 gene in silico.** *Int J Oncol* 2004, **25**:1193-1199.
- Abdel-Wahab O, Pardanani A, Patel J, Wadleigh M, Lasho T, Heguy A, Beran M, Gilliland DG, Levine RL, Tefferi A: **Concomitant analysis of EZH2 and ASXL1 mutations in myelofibrosis, chronic myelomonocytic leukemia and blast-phase myeloproliferative neoplasms.** *Leukemia* 2011, **25**:1200-1202.
- Abdel-Wahab O, Kilpivaara O, Patel J, Busque L, Levine RL: **The most commonly reported variant in ASXL1 (c.1934dupGp;Gly646TrpfsX12) is not a somatic alteration.** *Leukemia* 2010, **24**:1656-1657.
- Carbuccia N, Trouplin V, Gelsi-Boyer V, Murati A, Rocquain J, Adelaide J, Olschwang S, Xerri L, Chaffanet M, Birnbaum D, Mozziconacci MJ: **Mutual exclusion of ASXL1 and NPM1 mutations in a series of acute myeloid leukemias.** *Leukemia* 2010, **24**:469-473.
- Bejar R, Stevenson K, Abdel-Wahab O, Bejar R, Stevenson K, Abdel-Wahab O, Galili N, Nilsson B, Garcia-Manero G, Kantarjian H, Raza A, Levine RL, Neuberg D, Ebert BL: **Clinical effect of point mutations in myelodysplastic syndromes.** *N Engl J Med* 2011, **364**:2496-2506.
- Rocquain J, Carbuccia N, Trouplin V, Raynaud S, Murati A, Nezri M, Tadriz Z, Olschwang S, Vey N, Birnbaum D, Gelsi-Boyer V, Mozziconacci MJ: **Combined mutations of ASXL1, CBL, FLT3, IDH1, IDH2, JAK2, KRAS, NPM1, NRAS, RUNX1, TET2 and WT1 genes in myelodysplastic syndromes and acute myeloid leukemias.** *BMC Cancer* 2010, **10**:401-407.
- Sugimoto Y, Muramatsu H, Makishima H, Prince C, Jankowska AM, Yoshida N, Xu Y, Nishio N, Hama A, Yagasaki H, Takahashi Y, Kato K, Manabe A, Kojima S, Maciejewski J: **Spectrum of molecular defects in juvenile myelomonocytic leukaemia includes ASXL1 mutations.** *Br J Haematol* 2010, **150**:83-87.
- Szpurka H, Jankowska AM, Makishima H, Bodo J, Bejanyan N, Hsi ED, Sekeres MA, Maciejewski JP: **Spectrum of mutations in RARS-T patients includes TET2 and ASXL1 mutations.** *Leuk Res* 2010, **34**:969-973.
- Abdel-Wahab O, Manshouri T, Patel J, Harris K, Yao J, Hedvat C, Heguy A, Bueso-Ramos C, Kantarjian H, Levine RL, Verstovsek S: **Genetic analysis of transforming events that convert chronic myeloproliferative neoplasms to leukemias.** *Cancer Res* 2010, **70**:447-452.
- Brecqueville M, Rey J, Bertucci F, Coppin E, Finetti P, Carbuccia N, Cervera N, Gelsi-Boyer V, Arnoulet C, Gisserot O, Verrot D, Slama B, Vey N, Mozziconacci MJ, Birnbaum D, Murati A: **Mutation analysis of ASXL1, CBL, DNMT3A, IDH1, IDH2, JAK2, MPL, NF1, SF3B1, SUZ12 and TET2 in myeloproliferative neoplasms.** *Genes Chromosome Cancer* 2012.
- Boulwood J, Perry J, Zaman R, Fernandez-Santamaria C, Littlewood T, Kusec R, Pellagatti A, Wang L, Clark RE, Wainscoat JS: **High-density single nucleotide polymorphism array analysis and ASXL1 gene mutation screening in chronic myeloid leukemia during disease progression.** *Leukemia* 2010, **24**:1139-1145.
- Carbuccia N, Murati A, Trouplin V, Brecqueville M, Adelaide J, Rey J, Vainchenker W, Bernard OA, Chaffanet M, Vey N, Birnbaum D, Mozziconacci MJ: **Mutations of ASXL1 gene in myeloproliferative neoplasms.** *Leukemia* 2009, **23**:2183-2186.
- Chou WC, Huang HH, Hou HA, Chen CY, Tang JL, Yao M, Tsay W, Ko BS, Wu SJ, Huang SY, Hsu SC, Chen YC, Huang YN, Chang YC, Lee FY, Liu MC, Liu CW, Tseng MH, Huang CF, Tien HF: **Distinct clinical and biological features of de novo acute myeloid leukemia with additional sex comb-like 1 (ASXL1) mutations.** *Blood* 2011, **116**:4086-4094.
- Gelsi-Boyer V, Trouplin V, Roquain J, Adelaide J, Carbuccia N, Esterni B, Finetti P, Murati A, Arnoulet C, Zerazhi H, Fezoui H, Tadriz Z, Nezri M, Chaffanet M, Mozziconacci MJ, Vey N, Birnbaum D: **ASXL1 mutation is associated with poor prognosis and acute transformation in chronic myelomonocytic leukaemia.** *Br J Haematol* 2010, **151**:365-375.
- Grossmann V, Kohlmann A, Eder C, Haferlach C, Kern W, Cross NC, Haferlach T, Schnittger S: **Molecular profiling of chronic myelomonocytic leukemia reveals diverse mutations in > 80% of patients with TET2 and EZH2 being of high prognostic relevance.** *Leukemia* 2012, **25**:877-879.
- Jankowska AM, Makishima H, Tiu RV, Szpurka H, Huang Y, Traina F, Visconte V, Sugimoto Y, Prince C, O'Keefe C, Hsi ED, List A, Sekeres MA, Rao A, McDevitt MA, Maciejewski JP: **Mutational spectrum analysis of chronic myelomonocytic leukemia includes genes associated with epigenetic regulation: UTX, EZH2, and DNMT3A.** *Blood* 2011, **118**:3932-3941.
- Pratcorona M, Abbas S, Sanders M, Koenders J, Kavelaars F, Erpelinck-Verschueren C, Zeilemaker A, Lowenberg B, Valk P: **Acquired mutations in**

- ASXL1 in acute myeloid leukemia: prevalence and prognostic value. *Haematologica* 2012, **97**:388-392, doi:10.3324.
34. Ricci C, Fermo E, Corti S, Molteni M, Faricciotti A, Cortelezzi A, Lambertenghi Delilliers G, Beran M, Onida F: **RAS mutations contribute to evolution of chronic myelomonocytic leukemia to the proliferative variant.** *Clin Cancer Res* 2010, **16**:2246-2256.
  35. Shen Y, Zhu YM, Fan X, Shi JY, Wang QR, Yan XJ, Gu ZH, Wang YY, Chen B, Jiang CL, Yan H, Chen FF, Chen HM, Chen Z, Jin J, Chen SJ: **Gene mutation patterns and their prognostic impact in a cohort of 1185 patients with acute myeloid leukemia.** *Blood* 2011, **118**:5593-5603.
  36. Stein BL, Williams DM, O'Keefe C, Rogers O, Ingersoll RG, Spivak JL, Verma A, Maciejewski JP, McDevitt MA, Moliterno AR: **Disruption of the ASXL1 gene is frequent in primary, post-essential thrombocytosis and post-polycythemia vera myelofibrosis, but not essential thrombocytosis or polycythemia vera: analysis of molecular genetics and clinical phenotypes.** *Haematologica* 2011, **96**:1462-1469.
  37. Thol F, Friesen I, Damm F, Yun H, Weissinger EM, Krauter J, Wagner K, Chaturvedi A, Sharma A, Wichmann M, Göhring G, Schumann C, Bug G, Ottmann O, Hofmann WK, Schlegelberger B, Heuser M, Ganser A: **Prognostic significance of ASXL1 mutations in patients with myelodysplastic syndromes.** *J Clin Oncol* 2011, **29**:2499-2506.
  38. Guglielmelli P, Biamonte F, Score J, Hidalgo-Curtis C, Cervantes F, Maffioli M, Fanelli T, Ernst T, Winkelmann N, Jones AV, Zoi K, Reiter A, Duncombe A, Villani L, Bosi A, Barosi G, Cross NC, Vannucchi AM: **EZH2 mutational status predicts poor survival in myelofibrosis.** *Blood* 2011, **118**:5227-5234.
  39. Damm F, Kosmider O, Gelsi-Boyer V, Renneville A, Carbuca N, Hidalgo-Curtis C, Della-Valle V, Couronné L, Scouriez L, Chesnais V, Guerci-Bresler A, Slama B, Beyne-Rauzy O, Schmidt-Tanguy A, Stamatoullas-Bastard A, Dreyfus F, Prebet T, Debouton S, VEY N, Morgan MA, Cross NCP, Preudhomme C, Birnbaum D, Bernard OA, Fontenay M: **Mutations affecting m RNA splicing define distinct clinical phenotypes and correlate with patient outcome in myelodysplastic syndromes.** *Blood* 2012.
  40. Metzeler KH, Becker H, Mahary K, Radmacher MD, Kohlschmidt J, Mrózek K, Nicolet D, Whitman SP, Wu YZ, Schwind S, Powell BL, Carter TH, Wetzler M, Moore JO, Kolitz JE, Baer MR, Carroll AJ, Larson RA, Caligiuri MA, Marcucci G, Bloomfield CD: **ASXL1 mutations identify a high-risk subgroup of older patients with primary cytogenetically normal AML within the ELN Favorable genetic category.** *Blood* 2011, **118**:6920-6929.
  41. An Q, Wright SL, Moorman AV, Parker H, Griffiths M, Ross FM, Davies T, Harrison CJ, Strefford JC: **Heterogeneous breakpoints in patients with acute lymphoblastic leukemia and the dic(9;20)(p11-13;q11) show recurrent involvement of genes at 20q11.21.** *Haematologica* 2009, **94**:1164-1169.
  42. Hoischen A, van Bon BW, Rodriguez-Santiago B, Gilissen C, Vissers LE, de Vries P, Janssen I, van Lier B, Hastings R, Smithson SF, Newbury-Ecob R, Kjaergaard S, Goodship J, McGowan R, Bartholdi D, Rauch A, Peippo M, Cobben JM, Wieczorek D, Gillessen-Kaesbach G, Veltman JA, Brunner HG, de Vries BB: **De novo nonsense mutations in ASXL1 cause Bohring-Opitz syndrome.** *Nat Genet* 2011, **43**:729-731.
  43. Quesada V, Conde L, Villamor N, Ordóñez GR, Jares P, Bassaganyas L, Ramsay AJ, Beà S, Pinyol M, Martínez-Trillos A, López-Guerra M, Colomer D, Navarro A, Baumann T, Aymerich M, Rozman M, Delgado J, Giné E, Hernández JM, González-Díaz M, Puente DA, Velasco G, Freije JM, Tubío JM, Royo R, Gelpí JL, Orozco M, Pisano DG, Zamora J, Vázquez M: **Exome sequencing identifies recurrent mutations of the splicing factor SF3B1 gene in chronic lymphocytic leukemia.** *Nat Genet* 2011, **44**:47-52.
  44. Zhang J, Ding L, Holmfeldt L, Wu G, Heatley SL, Payne-Turner D, Easton J, Chen X, Wang J, Rusch M, Lu C, Chen SC, Wei L, Collins-Underwood JR, Ma J, Roberts KG, Pounds SB, Ulyanov A, Becksfort J, Gupta P, Huether R, Kriwacki RW, Parker M, McGoldrick DJ, Zhao D, Alford D, Espy S: **The genetic basis of early T-cell precursor acute lymphoblastic leukaemia.** *Nature* 2012, **481**:157-163.
  45. Imamura T, Kakazu N, Hibi S, Morimoto A, Fukushima Y, Ijui I, Hada S, Kitabayashi I, Abe T, Imashuku S: **Rearrangement of the MOZ gene in pediatric therapy-related myelodysplastic syndrome with a novel chromosomal translocation t(2;8)(p23;p11).** *Genes Chromosomes Cancer* 2003, **36**:413-419.
  46. Nakahata S, Saito Y, Hamasaki M, Hidaka T, Arai Y, Taki T, Taniwaki M, Morishita K: **Alteration of enhancer of polycomb 1 at 10p11.2 is one of the genetic events leading to development of adult T-cell leukemia/lymphoma.** *Genes Chromosomes Cancer* 2009, **48**:768-776.
  47. Fisher CL, Pineault N, Brookes C, Helgason CD, Ohta H, Bodner C, Hess JL, Humphries RK, Brock HW: **Loss-of-function Additional sex combs like 1 mutations disrupt hematopoiesis but do not cause severe myelodysplasia or leukemia.** *Blood* 2010, **115**:38-46.
  48. Ricci C, Spinelli O, Salmoiraghi S, Finazzi G, Carobbio A, Rambaldi A: **ASXL1 mutations in primary and secondary myelofibrosis.** *Br J Haematol* 2012, **156**:404-407.
  49. Gangat N, Caramazza D, Vaidya R, George G, Begna K, Schwager S, Van Dyke D, Hanson C, Wu W, Pardanani A, Cervantes F, Passamonti F, Tefferi A: **DIPSS plus: a refined Dynamic International Prognostic Scoring System for primary myelofibrosis that incorporates prognostic information from karyotype, platelet count, and transfusion status.** *J Clin Oncol* 2011, **29**:392-397.
  50. Guglielmelli P, Biamonte F, Score J, Hidalgo-Curtis C, Cervantes F, Maffioli M, Fanelli T, Ernst T, Winkelmann N, Jones AV, Zoi K, Reiter A, Duncombe A, Villani L, Paoli C, Bosi A, Barosi G, Cross NCP, Vannucchi AM: **Prognostic Impact of EZH2 and ASXL1 Mutation in Myelofibrosis. Abstract 2811 ASH, December 2011. Session: 634. Myeloproliferative Syndromes: Poster II .**
  51. Schnittger S, Eder C, Alpermann T, Fasan A, Grossmann V, Alexander Kohlmann A, Kern W, Haferlach C, Haferlach T: **ASXL1 exon 12 Mutations Are Frequent in AML with Intermediate Risk Karyotype and Are Independently Associated with An Extremely Poor Outcome. Abstract 416 ASH, December 2011. Session: 611. Leukemias - Biology, Cytogenetics and Molecular Markers in Diagnosis and Prognosis: Prognostic Biomarkers in Adult AML .**
  52. Rockova V, Abbas S, Wouters BJ, Erpelinck CA, Beverloo HB, Delwel R, van Putten WL, Löwenberg B, Valk PJ: **Risk stratification of intermediate-risk acute myeloid leukemia: integrative analysis of a multitude of gene mutation and gene expression markers.** *Blood* 2011, **118**:1069-1076.
  53. Dohner H, Estey EH, Amadori S, Appelbaum FR, Büchner T, Burnett AK, Dombret H, Fenaux P, Grimwade D, Larson RA, Lo-Coco F, Naoe T, Niederwieser D, Ossenkoppele GJ, Sanz MA, Sierra J, Tallman MS, Löwenberg B, Bloomfield CD: **Diagnosis and management of acute myeloid leukemia in adults: recommendations from an international expert panel, on behalf of the European LeukemiaNet.** *Blood* 2010, **115**:453-474.

doi:10.1186/1756-8722-5-12

**Cite this article as:** Gelsi-Boyer et al.: Mutations in ASXL1 are associated with poor prognosis across the spectrum of malignant myeloid diseases. *Journal of Hematology & Oncology* 2012 **5**:12.

**Submit your next manuscript to BioMed Central and take full advantage of:**

- Convenient online submission
- Thorough peer review
- No space constraints or color figure charges
- Immediate publication on acceptance
- Inclusion in PubMed, CAS, Scopus and Google Scholar
- Research which is freely available for redistribution

Submit your manuscript at  
www.biomedcentral.com/submit

