

Suggestive evidence of associations between liver X receptor β polymorphisms with type 2 diabetes mellitus and obesity in three cohort studies: HUNT2 (Norway), MONICA (France) and HELENA (Europe).

Karianne Solaas, Vanessa Legry, Kjetil Retterstol, Paul Berg, Kirsten Holven, Jean Ferrières, Philippe Amouyel, Sigbjorn Lien, Javier Romeo, Jara Valtueña, et al.

► **To cite this version:**

Karianne Solaas, Vanessa Legry, Kjetil Retterstol, Paul Berg, Kirsten Holven, et al.. Suggestive evidence of associations between liver X receptor β polymorphisms with type 2 diabetes mellitus and obesity in three cohort studies: HUNT2 (Norway), MONICA (France) and HELENA (Europe).. BMC Medical Genetics, BioMed Central, 2010, 11 (1), pp.144. <10.1186/1471-2350-11-144>. <inserm-00622786>

HAL Id: inserm-00622786

<http://www.hal.inserm.fr/inserm-00622786>

Submitted on 12 Sep 2011

HAL is a multi-disciplinary open access archive for the deposit and dissemination of scientific research documents, whether they are published or not. The documents may come from teaching and research institutions in France or abroad, or from public or private research centers.

L'archive ouverte pluridisciplinaire **HAL**, est destinée au dépôt et à la diffusion de documents scientifiques de niveau recherche, publiés ou non, émanant des établissements d'enseignement et de recherche français ou étrangers, des laboratoires publics ou privés.

RESEARCH ARTICLE

Open Access

Suggestive evidence of associations between liver X receptor β polymorphisms with type 2 diabetes mellitus and obesity in three cohort studies: HUNT2 (Norway), MONICA (France) and HELENA (Europe)

Karianne Solaas^{1,2†}, Vanessa Legry^{3†}, Kjetil Retterstol^{4,5}, Paul R Berg⁶, Kirsten B Holven², Jean Ferrières⁷, Philippe Amouyel³, Sigbjorn Lien⁶, Javier Romeo⁸, Jara Valtueña⁹, Kurt Widhalm¹⁰, Jonatan R Ruiz¹¹, Jean Dallongeville³, Serena Tonstad¹², Helge Rootwelt¹³, Bente Halvorsen¹⁴, Marit S Nenseter¹⁴, Kare I Birkeland^{1,15}, Per M Thorsby¹⁶, Aline Meirhaeghe^{3*}, Hilde I Nebb^{2*}

Abstract

Background: The liver X receptors (LXR) α and β regulate lipid and carbohydrate homeostasis and inflammation. *Lxr β ^{-/-}* mice are glucose intolerant and at the same time lean. We aimed to assess the associations between single nucleotide polymorphisms (SNPs) in *LXR β* and risk of type 2 diabetes mellitus (T2DM), obesity and related traits in 3 separate cohort studies.

Methods: Twenty *LXR β* SNPs were identified by sequencing and genotyped in the HUNT2 adult nested case-control study for T2DM ($n = 835$ cases/1986 controls). Five tag-SNPs (rs17373080, rs2695121, rs56151148, rs2303044 and rs3219281), covering 99.3% of the entire common genetic variability of the *LXR β* gene were identified and genotyped in the French MONICA adult study ($n = 2318$) and the European adolescent HELENA cross-sectional study ($n = 1144$). *In silico* and *in vitro* functionality studies were performed.

Results: We identified suggestive or significant associations between rs17373080 and the risk of (i) T2DM in HUNT2 (OR = 0.82, $p = 0.03$), (ii) obesity in MONICA (OR = 1.26, $p = 0.05$) and (iii) overweight/obesity in HELENA (OR = 1.59, $p = 0.002$). An intron 4 SNP (rs28514894, a perfect proxy for rs17373080) could potentially create binding sites for hepatic nuclear factor 4 alpha (HNF4 α) and nuclear factor 1 (NF1). The C allele of rs28514894 was associated with ~1.25-fold higher human *LXR β* basal promoter activity *in vitro*. However, no differences between alleles in terms of DNA binding and reporter gene transactivation by HNF4 α or NF1 were observed.

Conclusions: Our results suggest that rs17373080 in *LXR β* is associated with T2DM and obesity, maybe *via* altered *LXR β* expression.

* Correspondence: Aline.Meirhaeghe-Hurez@pasteur-lille.fr; h.i.nebb@medisin.uio.no

† Contributed equally

²Department of Nutrition, Faculty of Medicine, University of Oslo, Oslo, Norway

³INSERM, U744; Institut Pasteur de Lille; Univ. Lille Nord de France; UDSL; Lille, France

Full list of author information is available at the end of the article

Background

Liver X receptors (LXRs) are nuclear receptors involved in control of carbohydrate and lipid homeostasis as well as inflammation [1-3]. The LXRs consist of two isoforms which share approximately 78% amino acid sequence identity: LXR α , encoded by *NR1H3* (11p11.2) and LXR β encoded by *NR1H2* (19q13.3). High expression of LXR α is restricted to metabolically active tissues, whereas LXR β is ubiquitously expressed [4]. LXR β is the only isoform expressed in pancreatic beta cells [5]. LXRs regulate gene expression by binding to specific response elements in the target genes' promoter regions [6-8].

Study of mice lacking one LXR isoform or both has shown important, specific functions of LXR β in metabolic pathways disturbed in type 2 diabetes mellitus (T2DM) and obesity [9,10]. Firstly, *Lxr β ^{-/-}* mice exhibit markedly lower glucose tolerance [11] with reduced basal and glucose-stimulated insulin secretion than wild type (wt) mice [5]. The stimulatory effect of LXR agonists on insulin secretion seems to be mediated by regulating both glucose and lipid metabolism in pancreatic beta cells [5,12]. Chronic, increased activation of LXR may contribute to the dysfunction of pancreatic beta cells observed in T2DM [13]. Secondly, *Lxr β ^{-/-}* mice have less adipose tissue with lower triglyceride (TG) levels but similar insulin sensitivity as wt mice [11,14]. The lack of LXR β appears to be responsible for the lean phenotype in *Lxr α ^{-/-} β ^{-/-}* mice [9].

Therefore, specific LXR β activation could potentially dissociate the LXR agonists' anti-atherosclerotic and anti-diabetic effects from their hypertriglyceridaemic effects and possibly serve as the basis of a treatment for T2DM [10,15].

We made the hypothesis that the genetic variability of *LXR β* could be associated with fat mass, glucose metabolism and related phenotypes in humans. In the present study, we identified single nucleotide polymorphisms (SNPs) in the *LXR β* gene by sequencing DNA from 96 individuals (86 patients with metabolic dysfunctions in glucose and lipid homeostasis and 10 healthy controls). We then performed association studies to determine if the *LXR β* SNPs were associated with T2DM (in one case-control study), obesity or related phenotypes (in two - adult and adolescent - population based-studies). Finally, the functionality of one SNP was assessed *in silico* and *in vitro*.

Methods

The HUNT2 study

The Nord-Trøndelag Health Study 2 (HUNT2 Study) has been described elsewhere <http://www.ntnu.no/english>[16]. In brief, it was a large ($n = 65,905$), population-based health survey carried out in Norway during 1995-

97. Data were obtained from non-fasting blood samples, a clinical examination and questionnaires [17]. From this large sample, 1040 diabetic subjects (942 individuals with self-reported diabetes and 98 individuals with a non-fasting serum glucose level >11.1 mmol/l) were randomly selected excluding type 1 diabetic subjects ($n = 171$) as described [17]. The investigators also selected 2080 age- and gender- matched non-diabetic control subjects with a serum glucose level ≤ 5.5 mmol/l. DNA samples were available for 2821 subjects (835 T2DM subjects and 1986 controls) [18]. Their characteristics are described in Additional file 1: Table 1. The use of data and DNA materials from these subjects for the present study was approved by the Norwegian Regional Committee for Medical Research Ethics (Southern Region), the Norwegian Social Data Services and the Norwegian Directorate for Health and Social Affairs.

The MONICA study

Participants were recruited as part of the WHO-MONICA population survey conducted from 1995 to 1997 in the Lille Urban Community (Lille, $n = 1195$) and the Haute-Garonne county (Toulouse, $n = 1182$) in France. Individuals aged 35-65 years were randomly selected from electoral rolls (the WHO-MONICA Project protocol) [19]. The study protocol was approved by the appropriate independent ethics committees for each centre. After signing an informed consent form, participants filled out a standard questionnaire. The measurement of anthropometric, clinical and biochemical parameters has been described [20]. Fasting blood samples were drawn into a disodium EDTA tube. DNA samples were available for 2318 individuals. Their characteristics are described in Additional file 1: Table s1.

The HELENA study

Participants were recruited as part of the HELENA cross-sectional study ("Healthy Lifestyle in Europe by Nutrition in Adolescence-Cross Sectional Study", <http://www.helenastudy.com>) performed from 2006 to 2007 in 10 centres from 9 European countries as described [21]. The protocol was approved by the appropriate ethics committee in each centre. Written informed consent was obtained from each subject and their legal representatives. The sample included 3865 adolescents (14.8 ± 1.4 y) recruited through their schools which were randomly selected [22]. The measurement of the anthropometric parameters has been described elsewhere [23]. Overweight/obesity was defined as a BMI over the value given by Cole *et al.* [24], corresponding to 25/30 kg/m² at the age of 18. One third of the classes were randomly selected for fasting blood collection, resulting in a total of 1144 subjects whose characteristics are described in Additional file 1: Table s1. DNA extractions and the

Table 1 SNPs detected by sequencing the *LXRβ* gene

#	rs number	Position on chromosome 19	Position from ATG	Location	Base change	MAF in sequenced individuals (n = 96)	MAF in HUNT2 controls (n = 1986)	MAF in MONICA (n = 2318)	MAF in HELENA-CSS (n = 1144)
1	rs79233036 ^a	55,569,984	-2692	5' near gene	C>T	0.005 (1 heterozygous subject)	0	-	-
2	rs77094157 ^a	55,570,236	-2440	5' near gene	C>T	0.005 (1 heterozygous subject)	NA	-	-
3	rs12972221	55,570,952	-1723	5' near gene	G>T	0.36	NA	-	-
4	rs17373080	55,571,336	-1339	5' near gene	C>G	0.37	0.35	0.31	0.32
5	rs56151148	55,571,364	-1311	5' near gene	C>T	0.05	0.08	0.09	0.08
6	rs55794952	55,571,487	-1188	5' near gene	G>T	0.005 (1 heterozygous subject)	0.007	-	-
7	rs2695121	55,572,553	-122	intron 2	C>T	0.44	0.44	0.43	0.40
8	rs55671147	55,572,866	+192	exon 4	G>A (Glu36Glu)	0.03	NA	-	-
9	rs28514894	55,573,138	+464	intron 4	C>T	0.33	0.35	-	-
10	rs2248949	55,573,981	+1306	intron 6	G>A	0.45	0.44	-	-
11	rs41432149	55,573,984	+1309	intron 6	C>T	0.36	0.35	-	-
12	rs77290536 ^a	55,574,080	+1405	exon 7	C>G (Pro252Arg)	0.005 (1 heterozygous subject)	0	-	-
13	rs78105260 ^a	55,574,374	+1700	intron 7	A>G	0.005 (1 heterozygous subject)	0.007	-	-
14	rs1405655	55,574,431	+1757	intron 7	C>T	0.36	0.35	-	-
15	rs2303045	55,574,730	+2056	intron 7	C>G	0.35	0.35	-	-
16	rs4802703	55,576,697	+4023	intron 8	A>C	0.40	0.32	-	-
17	rs2303044	55,577,013	+4339	intron 8	A>G	0.10	0.07	0.08	0.08
18	rs1052677	55,577,993	+5319	3' UTR	C>G	0.16	0.09	-	-
19	rs75967835 ^a	55,578,378	+5704	3' near gene	A>C	0.005 (1 heterozygous subject)	0	-	-
20	rs3219281	55,578,899	+6225	3' near gene	C>T	0.15	0.09	0.09	0.10

Positions based on NM_007121 sequence. MAF: minor allele frequency. NA: not available.

The 5 SNPs selected for association studies are indicated in bold.

^adiscovered by gene sequencing in the present study.

measurement of biochemical parameters have also been described [23].

Gene sequencing

Ten normolipidaemic controls and 86 patients with metabolic syndrome according to the NCEP Expert Panel 2002 definition [25] were recruited at Oslo University Hospital Rikshospitalet and Ulleval, Norway. EDTA blood was collected from the 96 individuals, and genomic DNA was extracted using the MagNaPure LC instrument with DNA isolation kit I (Roche Applied Science, IN, USA). In order to identify as many *LXRβ* variants as possible, the *LXRβ* gene (all exons, exon-

intron junctions, 3126 bp 5' of the ATG and 935 bp 3' of the last exon; primer positions in Additional file 1: Table s2) was sequenced in DNA from the 96 individuals, and the SNPs identified were confirmed as described [26] (Table 1).

Genotyping

In the HUNT2 Study, the SNPs were genotyped on a MASSARRAY system (Sequenom, San Diego, CA, USA) as described elsewhere [26]. The genotyping success rates (GSRs) were over 98% (except for rs77094157, rs12972221 and rs55671147). In the HELENA study, genotyping was performed on an Illumina system using

GoldenGate technology. The GSRs were over 99.7%. In the MONICA samples, genotyping was performed using a PCR-RFLP method. Primers and conditions are available on request. The GSRs were over 98%. Two percent of the samples were double genotyped and the concordance rate was 100%. None of the genotype population distributions deviated from the Hardy-Weinberg equilibrium, except for rs2303044 in the MONICA study ($p = 0.017$). However, Hardy-Weinberg equilibrium was respected in the subgroup of normal-weight subjects ($n = 1076$, $p = 0.14$).

Vectors

The pGL3-*LXRβ* vector was obtained by amplification of the 1922 bp fragment (-201/+1721 bp in reference to the transcription start site) containing part of the promoter through to the end of intron 4 of the *LXRβ* gene in its two allelic forms (*T* and *C*) for rs28514894 (an intermediate step was performed in a TA cloning pCR[®]II vector (Invitrogen)). Primers were 5'-GGCCGCA GGCTCAGAGAAGCG-3' (forward) and 5'-CTGGGGT GGGTAGGTAGAGGC-3' (reverse). Insertion into the pGL3-basic luciferase reporter vector (Promega, Madison, WI) was checked by sequencing. The pCH-NF1A, B, C and X expression vectors were a kind gift from Dr R. Gronostajski (Buffalo, NY, USA). The pCMV6-XL4-HNF4α expression vector was purchased from OriGene Technologies, Inc. (Rockville, MD, USA) (TrueClone SC123863).

In silico analyses

MatInspector version 7.0 [27] (Genomatix Software GmbH, Munich Germany) was used to identify which transcription factor binding sites were affected by the SNPs, using the vertebrate matrix.

Cell lines and transient transfections

The human JEG3 choriocarcinoma and HepG2 hepatoma cell lines (ATCC) were cultured according to the manufacturer's recommendations. 70% confluent cells in 24-well plates were transfected with 500 ng of pGL3 vector ± 250 ng of HNF4α or NF1 expression vectors with a FuGENE HD (Roche Applied Science):DNA ratio of 5:1 for HepG2 cells and 4:1 for JEG3 cells. Luciferase activities were measured 40 hr after transfection using the Dual Luciferase Assay kit (Promega, Madison, WI). The *firefly* luciferase activity of the pGL3 vectors was normalized against the *renilla* luciferase activity shown by the co-transfected pRL-CMV vector (Promega, Madison, WI, USA).

Electrophoretic Mobility Shift Assays (EMSAs)

JEG3 cells were transfected in 10 cm dishes with 4 μg NF1 expression vector and 8 μl LipofectAMINE 2000 (Invitrogen). Nuclear extracts were isolated using

CellLytic NuCLEAR Extraction Kit (Sigma-Aldrich) with the addition of extra EDTA-free complete proteinase inhibitor cocktail (Roche Applied Science). The oligonucleotides were: rs28514894 T allele 5'-TCCTCTGGCTC TTTGCCTGGGGATC-3', rs28514894 C allele 5'-TCCTCTGGCTCTTTGCCCGGGGATC-3' (bold letters indicate the SNP), NF1 positive control 5'-GCGGCTCT TGGCCCAAAGCCAGACCT-3' and NF1 negative control 5'-TCCTACTTACACCCTAAGTTTATC-3' (heavily mutated to hinder NF1 binding). The double-stranded oligonucleotides were radiolabelled and the probes were purified. This was followed by binding reactions and then separation of the protein-DNA complexes from the unbound probes, as described [28]. For supershift assays, 1 μL of anti-haemagglutinin (HA) mouse antibody (Roche Diagnostics GmbH) was preincubated with nuclear extracts for 45 minutes at 4°C.

Statistical analyses

The linkage disequilibrium (LD) between SNPs was evaluated using Haploview [29] and Thesias [30] softwares. All statistical analyses were performed with SAS statistical software (SAS Institute Inc., Cary, NC, USA). Odds ratios were obtained by multivariate logistic regression analyses. To see if the odds ratios were similar between the MONICA studies, the Breslow-Day test of homogeneity of odds ratios was calculated. In order to obtain normal data distributions, log-transformation was used for TG and insulin levels in all samples and for glucose levels in the MONICA sample and an exponential transformation was applied to glucose levels in the HUNT2 study. Inter-group comparisons of quantitative variables were made using a general linear model procedure. Reported p values are nominal and were systematically adjusted for confounding variables. The additive, dominant (and recessive when possible) models were tested but only the best model is actually presented. There was no significant interaction with gender for any of the SNPs in the 3 studies. The threshold for statistical significance was set to $p \leq 0.01$ (0.05/5 tested SNPs).

Results

Identification of *LXRβ* SNPs and haplotype blocks

By sequencing the *LXRβ* gene in 96 individuals 20 SNPs were identified (Table 1). T2DM cases and control subjects from the HUNT2 study were genotyped for these SNPs. Three rare SNPs (rs79233036, rs77290536 and rs75967835) could not be detected (all homozygous subjects). The genotyping of three other SNPs (rs77094157, rs12972221 and rs55671147) suffered from unspecific amplification or low GSR. Rs12972221 was in complete LD with rs17373080 ($D' = +1$, $r^2 = 1$). Given that the rs77094157 and rs55671147 SNPs had a low minor allele frequency (MAF), they were not further investigated in the

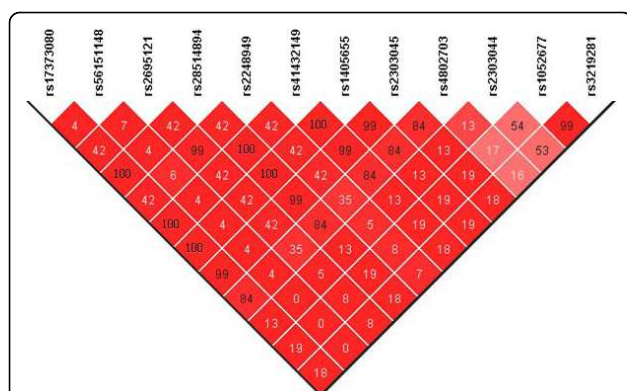


Figure 1 Linkage disequilibrium map of the 12 *LXRβ* SNPs (MAF \geq 0.05) genotyped in the HUNT2 study. The linkage disequilibrium was analysed using genotypes from control individuals in the HUNT2 study. D' and r^2 values were calculated using Haploview software. D' values ranged between 0.88 and 1 and are represented by a red gradation. r^2 values (in %) are given within the diamonds.

present study. Overall, 12 SNPs with a MAF \geq 0.05 were subsequently analysed. LD between these 12 SNPs was evaluated in control subjects from the HUNT2 study (Figure 1). Three blocks were detected ($r^2 > 0.80$). The first included rs17373080, rs28514894, rs41432149, rs1405655, rs2303045 and rs4802703. Rs17373080 was chosen as a tag-SNP for this block. The second block was composed of rs1052677 and rs3219281 (chosen as a tag-SNP). The third block was composed of rs2248949 and rs2695121 (chosen as a tag-SNP). Thus, the three tag-SNPs (rs17373080, rs3219281 and rs2695121) and the two SNPs (rs56151148 and rs2303044) showing little LD with other SNPs were selected, covering 99.3% of the entire common genetic variability of the *LXRβ* gene.

Association between the *LXRβ* SNPs and T2DM in HUNT2

We compared the genotype distributions of the 5 SNPs in individuals with T2DM ($n = 835$) and controls ($n = 1986$). No significant distribution differences were found (Table 2). However, when considering a dominant model, there was suggestive evidence for association between rs17373080 and the risk of T2DM. Indeed, subjects carrying the minor G allele had a lower risk of T2DM than CC subjects did (OR [95% CI] = 0.82 [0.69-0.98], $p = 0.03$).

Association between the *LXRβ* SNPs and obesity in MONICA

Individuals from the MONICA Lille and Toulouse samples (total $n = 2318$) were genotyped for the 5 SNPs. ORs for obesity in minor alleles carriers were homogenous in the 2 samples (Breslow-Day tests). Genotype distributions of the 5 SNPs for obese (BMI \geq 30 kg/m 2 , $n = 373$) versus non-obese (BMI <30 kg/m 2 , $n = 1945$) individuals were compared (Table 3); there were no significant inter-

group differences. However, in a dominant model, rs17373080 tended to be associated with the phenotype in question (OR for obesity = 1.26 [1.00-1.59] ($p = 0.05$) for G allele carriers, relative to CC individuals). Haplotype analyses performed with THESIAS did not provide additional information (data not shown).

Association between the *LXRβ* SNPs and obesity/overweight in HELENA

Adolescents from the HELENA study ($n = 1144$) were genotyped for the 5 SNPs. To gain statistical power, obese ($n = 70$) and overweight ($n = 195$) adolescents were pooled. The genotype distributions of the 5 *LXRβ* SNPs between obese/overweight ($n = 265$) and normal-weight ($n = 879$) adolescents were compared (Table 4). As for the MONICA study, the G allele of rs17373080 was associated with a significant higher risk of overweight/obesity (OR = 1.59 [1.19-2.13], $p = 0.002$). Moreover, individuals carrying either the T allele of rs2303044 or the T allele of rs3219281 also had a significant higher risk of obesity (OR = 1.84 [1.27-2.66], $p = 0.001$, and 1.78 [1.25-2.52], $p = 0.001$, respectively), compared with homozygous CC individuals. Haplotype analyses did not provide additional information (data not shown).

Association between the *LXRβ* SNPs and obesity- or T2DM-related quantitative phenotypes in HUNT2, MONICA and HELENA

In the three cohorts, we examined associations between the 5 *LXRβ* SNPs and the following obesity-/T2DM-related quantitative phenotypes: BMI, waist circumference, waist-to-hip ratio and plasma glucose and lipid levels.

In control individuals from the HUNT2 study, the G allele of rs17373080 tended to be associated with lower plasma glucose levels (4.96 ± 0.43 in G allele bearers versus 4.99 ± 0.43 mmol/l in CC subjects, $p = 0.03$). Rs56151148 T allele bearers tended to have lower plasma TG levels (1.62 ± 0.91 versus 1.69 ± 0.92 mmol/l, $p = 0.03$) compared with CC subjects (Additional file 1: Table s3).

In the MONICA study, there was suggestive evidence for an association between the GG genotype of rs17373080 with a higher waist-to-hip ratio (0.893 ± 0.095 in GG subjects versus 0.884 ± 0.092 in C allele bearers, $p = 0.03$) (Additional file 1: Table s4). Moreover, rs3219281 T allele carriers had significantly higher plasma TG levels (1.40 ± 1.10 versus 1.28 ± 0.94 mmol/l, $p = 0.01$) than CC subjects.

In the HELENA study, rs17373080 G allele bearers had higher fasting insulin levels (10.51 ± 6.66 versus 9.24 ± 4.84 μ U/ml, $p = 0.04$) and higher HOMA-IR index (2.36 ± 1.52 versus 2.07 ± 1.22 , $p = 0.02$) than CC subjects (Additional file 1: Table s5). Subjects carrying the rs2695121 T allele had lower fasting insulin levels

Table 2 Genotype distribution for the 5 *LXRβ*; SNPs in individuals with and without T2DM from the HUNT2 study and ORs [95% CI] of T2DM

	Genotype	Controls (n = 1986)		T2DM (n = 835)		Crude p	Adjusted OR	[95% CI]	Adjusted p
		n	Frequency	n	Frequency				
rs17373080	CC	815	0.41	381	0.46	0.08	0.82	[0.69-0.98]	0.03
	CG	934	0.47	367	0.44				
	GG	236	0.12	87	0.10				
	Total	1985		835					
rs56151148	CC	1655	0.84	684	0.82	0.23 ^a	1.15	[0.92-1.45]	0.22
	CT	303	0.15	141	0.17				
	TT	12	0.01	9	0.01				
	Total	1970		834					
rs2695121	CC	629	0.32	262	0.31	0.79	1.02	[0.85-1.23]	0.80
	CT	970	0.49	401	0.48				
	TT	382	0.19	170	0.20				
	Total	1981		833					
rs2303044	CC	1726	0.87	733	0.88	0.43 ^a	0.84	[0.65-1.09]	0.20
	CT	242	0.12	96	0.12				
	TT	12	0.01	2	0.00				
	Total	1980		831					
rs3219281	CC	1624	0.83	696	0.84	0.27 ^a	0.87	[0.69-1.10]	0.25
	CT	323	0.16	128	0.15				
	TT	21	0.01	4	0.00				
	Total	1968		828					

^aFisher exact test.

ORs and p values were adjusted for age, gender and BMI.

A dominant model was used to calculate the odds ratios.

Significant p values are indicated in bold.

(9.44 ± 5.12 versus 10.85 ± 6.98 μ U/ml, $p = 0.008$), lower HOMA-IR index (2.10 ± 1.18 versus 2.45 ± 1.71 , $p = 0.002$) and tended to have a lower HOMA-B cell index (136.7 ± 127.3 versus $153.1 \pm 110.9\%$, $p = 0.03$) compared with CC subjects. The T allele of rs2303044 was associated with a higher BMI (22.1 ± 4.3 in T allele carriers versus 21.2 ± 3.6 kg/m² in CC subjects, $p = 0.006$). Lastly, rs3219281 T allele carriers had higher BMI (21.9 ± 4.2 versus 21.2 ± 3.6 kg/m², $p = 0.009$) and a higher waist circumference (73.4 ± 10.7 versus 72.0 ± 9.0 cm, $p = 0.03$) than CC subjects.

Meta-analysis on fat mass indices

We performed a meta-analysis for the 5 SNPs regarding BMI or waist-to-hip ratio. When combining the two adult HUNT2 and MONICA studies (n = 4304), the T allele of rs2303044 was marginally associated with higher waist-to-hip ratio (effect size: $+0.0055 \pm 0.0028$, $p = 0.05$ (heterogeneity $p = 0.86$)). Similar association was detected for the T allele of rs3219281 and waist-to-hip

ratio (effect size: $+0.0051 \pm 0.0024$, $p = 0.03$ (heterogeneity $p = 0.55$)). When combining the three HUNT2, MONICA and HELENA studies (n = 5448), the T allele of rs2303044 was significantly associated with higher BMI (effect size: $+0.41 \pm 0.19$ kg/m², $p = 0.0096$ (heterogeneity $p = 0.39$)).

In silico and in vitro functional studies of rs28514894

In silico analyses with MatInspector software were performed to determine which relevant transcription factor (TF) binding sites were potentially affected by the SNPs. All SNPs in strong LD ($r^2 = 0.80$) with the rs17373080 SNP (i.e. rs28514894, rs41432149, rs1405655, rs2303045 and rs4802703) were tested. The C allele of rs28514894 (located in intron 4 (intron 2 after the translation initiation site)), a perfect proxy for the G allele of 17373080 ($r^2 = 0.99$), could theoretically create a binding site for hepatic nuclear factor 4 alpha (HNF4 α) (core similarity = 1.0, matrix similarity = 0.87) or nuclear factor 1 (NF1A, B, C and X) (core similarity = 0.76, matrix

Table 3 Genotype distribution for the 5 *LXRβ*; SNPs in obese and non obese individuals from the MONICA study and ORs [95% CI] of obesity

	Genotype	Non obese (n = 1945)		Obese (n = 373)		Crude p	Adjusted OR	[95% CI]	Adjusted p
		n	Frequency	n	Frequency				
rs17373080	CC	937	0.48	157	0.43	0.13	1.26	[1.00-1.59]	0.05
	CG	804	0.42	166	0.45				
	GG	191	0.10	43	0.12				
	Total	1932		366					
rs56151148	CC	1595	0.83	314	0.85	0.46 ^a	0.78	[0.57-1.08]	0.13
	CT	325	0.17	53	0.14				
	TT	11	0.01	1	0.00				
	Total	1931		368					
rs2695121	CC	616	0.32	128	0.35	0.30	0.90	[0.71-1.14]	0.39
	CT	947	0.49	182	0.49				
	TT	370	0.19	59	0.16				
	Total	1933		369					
rs2303044	CC	1658	0.85	308	0.83	0.41 ^a	1.23	[0.91-1.67]	0.18
	CT	262	0.14	60	0.16				
	TT	20	0.01	3	0.01				
	Total	1940		371					
rs3219281	CC	1571	0.83	305	0.82	0.77 ^a	1.03	[0.76-1.39]	0.85
	CT	310	0.16	61	0.16				
	TT	19	0.01	5	0.01				
	Total	1900		371					

^aFisher exact test. ORs and p values were adjusted for age, gender, centre, smoking habit, alcohol consumption and physical activity level. A dominant model was used to calculate the odds ratios. Significant p values are indicated in bold.

similarity = 0.83). Thus, we hypothesized that rs28514894 could modulate the *LXRβ* transcription level.

To test the functionality of the theoretical NF1 binding sites, we conducted electrophoretic mobility shift assays (EMSAs) with nuclear extracts from JEG3 cells (known not to express NF1) transfected with NF1 expression vectors. Our results showed that the NF1 isoforms could bind similarly to the binding site, regardless of the allele (T or C) (Figure 2). Protein binding to the C allele probe was prevented by adding a 10-fold excess of unlabelled T allele probe and *vice versa*. The specificity of this binding was confirmed, with complete supershifts when adding the anti-HA tag antibody (Figure 2). Nuclear extracts prepared from cells transfected with empty vectors did not bind to any of the probes. Similar experiments were conducted with HNF4α with the same results (data not shown).

The impact of rs28514894 on *LXRβ* promoter activity was also evaluated. We cloned a 1922-bp fragment containing the transcription start site up until the end of

intron 4 of the *LXRβ* gene in its two allelic forms (T and C) into the pGL3-basic luciferase reporter vector and thus created the pGL3-*LXRβ* vector. This gene portion was transcriptionally active in both cell lines (~20 fold and ~300 fold compared to the empty pGL3 basic vector in HepG2 and JEG3 cells, respectively) (Figures 3A and 3B). In the basal state, the *LXRβ* fragment displayed ~1.25-fold higher activity (p < 0.05) when carrying the C allele than when carrying the T allele in HepG2 and JEG3 cells. Since rs28514894 is located in a putative binding site for HNF4α and NF1s, the pGL3-*LXRβ* vector was co-transfected with HNF4α or NF1 expression vectors. In HepG2 cells, HNF4α increased *LXRβ*'s activity to a similar extent for the two allelic forms (~1.6 fold for both) (Figure 3A). NF1s repressed *LXRβ* activity by approximately 60% and to a similar extent for the two allelic forms (Figure 3A). Similar results were obtained using the four different NF1s (data not shown) and when using JEG3 cells, except a repressor effect of HNF4α on *LXRβ* in the latter case (Figure 3B).

Table 4 Genotype distribution for the 5 *LXRβ* SNPs in overweight or obese and normal weight individuals from the HELENA study and ORs [95% CI] of overweight/obesity

	Genotype	Normal weight (n = 879)		Overweight/obese (n = 265)		Crude p	Adjusted OR	[95% CI]	Adjusted p
		n	Frequency	n	Frequency				
rs17373080	CC	427	0.49	102	0.39	0.01	1.59	[1.19-2.13]	0.002
	CG	366	0.42	125	0.48				
	GG	85	0.10	36	0.14				
	Total	878		263					
rs56151148	CC	728	0.83	233	0.88	0.13 ^a	0.72	[0.47-1.11]	0.14
	CT	142	0.16	31	0.12				
	TT	9	0.01	1	0.00				
	Total	879		265					
rs2695121	CC	301	0.34	106	0.40	0.15	0.76	[0.57-1.02]	0.071
	CT	430	0.49	123	0.47				
	TT	148	0.17	35	0.13				
	Total	879		264					
rs2303044	CC	761	0.87	207	0.78	0.003^a	1.84	[1.27-2.66]	0.001
	CT	111	0.13	53	0.20				
	TT	5	0.01	4	0.02				
	Total	877		264					
rs3219281	CC	732	0.83	200	0.75	0.01^a	1.78	[1.25-2.52]	0.001
	CT	138	0.16	59	0.22				
	TT	9	0.01	6	0.02				
	Total	879		265					

^aFisher exact test. ORs and p values were adjusted for age, gender and centre. A dominant model was used to calculate the odds ratios. Significant p values are indicated in bold.

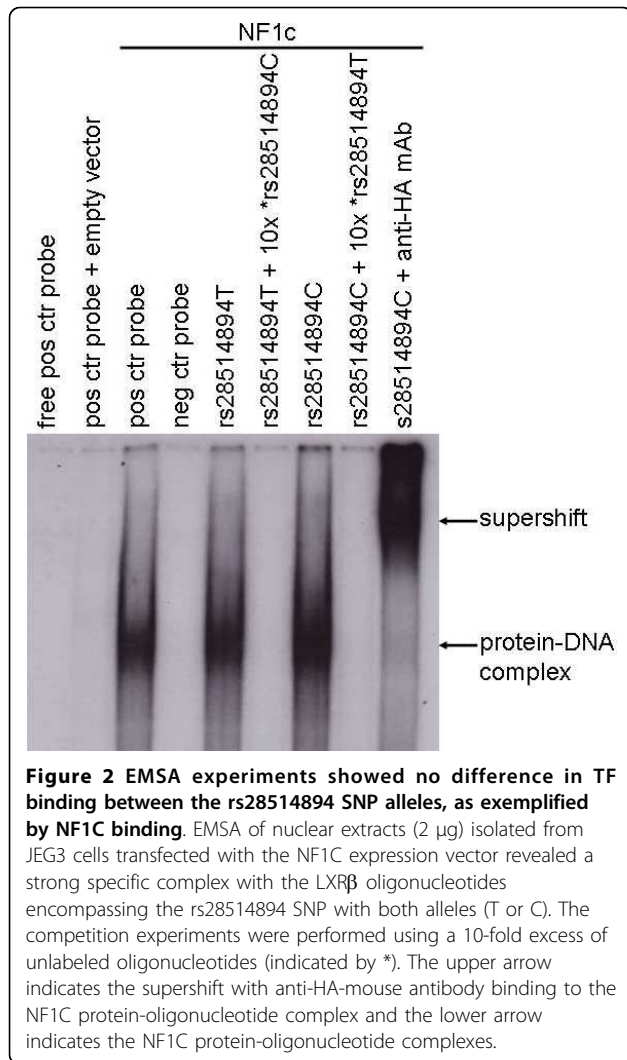
Discussion

In the present work, we characterized the impact of the entire common genetic variability of the *LXRβ* gene and searched for associations between 5 tagSNPs and various metabolic phenotypes in 3 independent samples. We report a suggestive association between the rs17373080 minor G allele (representing a 5.7 kbp haplotype block) in *LXRβ* and an approximately 20% lower risk of T2DM in the HUNT2 study. The MONICA study containing only 209 individuals with type 2 diabetes and the HELENA study (adolescents) none, these population samples are not suitable for replication of the association between SNPs and diabetes risk found in HUNT2. However, this result is in line with recent work by Dahlman *et al.*, who showed that this allele was associated with a 30% lower risk of T2DM in a study comprising 988 cases and 941 controls [31]. This protective effect can be explained by the lower plasma glucose levels observed in the non-diabetic subjects of the HUNT2 study carrying the G allele. Moreover, we found two *LXRβ* SNPs (rs17373080 and rs2695121) associated with insulin levels and HOMA indexes in adolescents. These

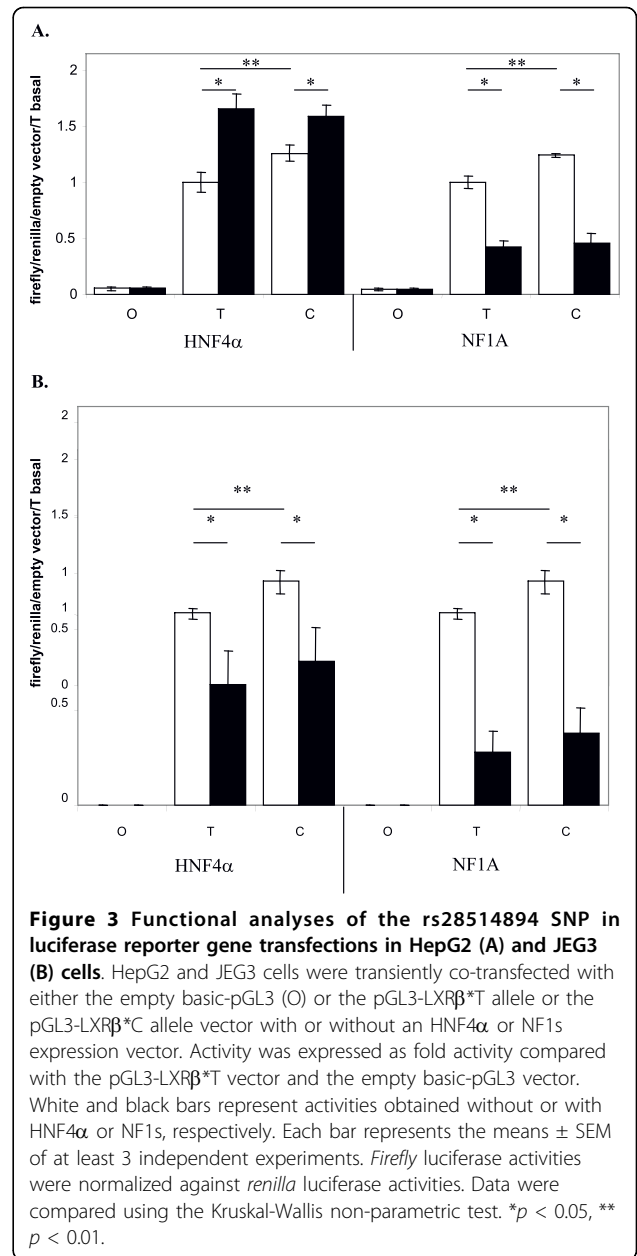
associations could reflect *LXRβ*'s role in insulin secretion, since it has been shown that *LXRβ* activation in pancreatic beta cells increases insulin expression and secretion *via* the SREBP-1 regulated pathway [5,12].

We also showed that the G allele of rs17373080 was associated with higher risk of obesity or overweight in the MONICA and the HELENA studies, respectively. In line with our results, Dahlman *et al.* reported a marginal association ($p = 0.06$) between rs17373080 and the risk of obesity in a study of 559 obese and 438 non-obese individuals [32]. However, they detected no association between rs17373080 and BMI as a continuous trait in 1721 adults [31]. We confirmed this absence of association in a larger sample (n = 5448). Only rs2303044 was significantly associated with BMI when combining the 2 adult and the adolescent studies. The presence of many confounding factors and compensation mechanisms may hide the impact of *LXRβ* on fat mass.

The opposing effects of the rs17373080 G allele on obesity (deleterious) and T2DM (protective) may appear to be contradictory. However, *LXRβ* seems to play opposing roles in fat metabolism and glucose



homeostasis. *Lxrβ*^{-/-} mice display lower amounts of adipose tissue on one hand and glucose intolerance (due to impaired glucose-induced insulin secretion) on the other [11]. Furthermore, the effects of the rs17373080 G allele on obesity and T2DM seem to be the opposite of what would be expected from the *Lxrβ*^{-/-} mouse phenotype [11]. However, this may reflect species differences, as discussed by Dahlman *et al.* [31]. Also, this may reveal differences between a complete gene knock-out and subtle changes like SNPs. The SNPs may induce the recruitment of different co-factors that modify the effect of LXRβ on target genes. For example, if the disease-associated allele creates a binding site for a transactivator, the disease association would be opposite to the effect observed in the *Lxrβ*^{-/-} mice. Furthermore, epigenetic changes may be involved. Lastly, the fact that LXRβ is expressed in several organs and tissues with different regulatory mechanisms adds to the complexity of the association. Indeed, as shown in our transient



transfection experiments, HNF4α activated LXRβ in HepG2 but repressed it in JEG3 cells. The full mechanistic and physiological relevance of the statistical associations found in this and other previous studies should be elucidated in other cell lines expressing the *LXRβ* gene in its various allelic forms.

To the best of our knowledge, no *LXRβ* SNPs have been significantly associated with obesity or T2DM in genome-wide association studies (GWAS). However, due to the very low *p*-value threshold required in GWAS (<10⁻⁸), nominal associations with *LXRβ* SNPs gene (albeit weak) may have gone unreported. The

associations in our present study were probably overestimated, since the number of subjects was lower than in GWAS. Nevertheless, GWAS do not cover the entire genetic variability of each gene. Thus, a candidate gene approach, as in the present study, may help detect associations between SNPs and disorders.

While performing the present study, Dahlman *et al.* [31] found a potential NF1 binding site overlapping rs17373080 using the transcription element search system and showed that NF1 could bind and regulate the expression of the *LXRβ* gene, whatever the allele. In our study, a MatInspector analysis revealed that the minor C allele of rs28514894 (in perfect LD with the minor G allele of rs17373080) could create binding sites for either HNF4α or NF1. We showed that the C allele of rs28514894 was associated with higher *LXRβ* basal promoter activity, which suggested that this allele was associated with higher *LXRβ* mRNA levels. However, we did not observe major difference between the two alleles in terms of DNA binding and transactivation by HNF4α or NF1s. Nevertheless, the inter-allele differences in TF binding and transcriptional activity may be too small to be detected by these methods but can still make a difference in the whole organism over the years - especially if (as would be expected) there are tissue-specific effects.

Conclusions

In conclusion, our results suggest associations between an *LXRβ* block tagged by rs17373080 and the risks of T2DM and obesity in adults, and the risk of overweight in adolescents, confirming the recent studies by Dahlman *et al.* [31,32]. These findings however must be interpreted with caution and replication in other large population samples and performing meta-analyses are necessary before a link between *LXRβ* gene variability and body weight metabolism can definitely be established. Moreover, understanding the molecular mechanisms behind the *LXRβ* SNP-disorder association will require further experimentation.

Additional material

Additional file 1: Table s1. Clinical characteristics of the study subjects. This table describes the main clinical characteristics of the 3 studies. Table s2. *LXRβ* gene sequencing primers. This table reports the sequence of the primers used for the sequencing of the *LXRβ* gene. Table s3. Associations for the 5 *LXRβ* SNPs in non-diabetic subjects from HUNT 2. This table reports the associations observed for the 5 SNPs in non-diabetic subjects from HUNT 2. Table s4. Associations for the 5 *LXRβ* SNPs in the MONICA study. This table reports the associations observed for the 5 SNPs in MONICA. Table s5. Associations for the 5 *LXRβ* SNPs in the HELENA study. This table reports the associations observed for the 5 SNPs in HELENA.

Acknowledgements

The HUNT2 Study is collaboration between the HUNT Research Centre, Faculty of Medicine, Norwegian University of Science and Technology, Norwegian Institute of Public Health, and Nord-Trøndelag County Council. We thank Nina Gjerlaugsen and Kristil Kindem Sundsaasen for excellent laboratory work. We thank Dr R. Gronostajski (Buffalo, NY, USA) for providing us with the NF1 expression vectors.

The work was supported by the Norwegian Research Council [grant number 101114/310] 'to [KS] and [MSN]'; South-Eastern Norway Regional Health Authority [grant number AUS 2007-25] 'to [KS]'; the Institut Pasteur de Lille 'to [VL]'; the Institut National de la Santé et de la Recherche Médicale (INSERM); the Conseil Régional du Nord-Pas de Calais, ONIVINS; the Parke-Davis Laboratory, the Mutuelle Générale de l'Education Nationale (MGEN); the Groupe Fournier, the Réseau National de Santé Publique; the Direction Générale de la Santé, the Institut Pasteur de Lille; and the Unité d'Evaluation du Centre Hospitalier et Universitaire de Lille. The HELENA Study was funded by the European Union's Sixth RTD Framework Programme [grant number Contract FOOD-CT-2005-007034]; Universidad Politécnica de Madrid [grant number CH/018/2008]; Axis-Shield Diagnostics Ltd (Oslo, Norway); Abbot Científica S.A. (Spain); the Spanish Ministry of Education [EX-2007-1124], and Cognis GmbH (Germany). The present study was part of CRESCENDO (Consortium for Research into Nuclear Receptors in Development and Aging) funded by the Commission's Sixth Framework Programme [grant number LSHM-CT-2005-018652].

Author details

¹Department of Endocrinology, Oslo University Hospital, Aker, Oslo, Norway. ²Department of Nutrition, Faculty of Medicine, University of Oslo, Oslo, Norway. ³INSERM, U744; Institut Pasteur de Lille; Univ. Lille Nord de France; UDSL; Lille, France. ⁴The Lipid Clinic, Oslo University Hospital, Rikshospitalet, Oslo, Norway. ⁵Norwegian Medical Agency, Oslo, Norway. ⁶Centre for Integrative Genetics, The Norwegian University of Life Sciences, Aas, Norway. ⁷Department of Cardiology, Toulouse University School of Medicine, Rangueil Hospital, Toulouse, France. ⁸Immunonutrition group, Department of Metabolism and Nutrition, Institute Frio-ICTAN, Spanish Scientific Research Council, Madrid, Spain. ⁹Facultad de Ciencias de la Actividad Física y del Deporte- INEF, Universidad Politécnica de Madrid, Madrid, Spain. ¹⁰Department of Paediatrics, Division of Clinical Nutrition and Prevention, Medical University of Vienna, Vienna, Austria. ¹¹Unit for Preventive Nutrition, Department of Biosciences and Nutrition at NOVUM, Karolinska Institutet, Stockholm, Sweden. ¹²Department of Preventive Medicine, Oslo University Hospital, Ulleval, Oslo, Norway. ¹³Department of Medical Biochemistry, Oslo University Hospital, Rikshospitalet, Oslo, Norway. ¹⁴Research Institute for Internal Medicine, Oslo University Hospital, Rikshospitalet, Oslo, Norway. ¹⁵Faculty of Medicine, University of Oslo, Norway. ¹⁶The Hormone Laboratory, Oslo University Hospital, Aker, Oslo, Norway.

Authors' contributions

KS participated in study design, coordinated the collaborations, theoretically arranged for gene sequencing and genotyping, prepared samples for gene sequencing, performed the *in silico* and EMSA analysis, wrote and drafted the manuscript. VL carried out the statistical analyses, performed the cloning and the transfection studies and helped to draft the manuscript. KR and ST participated in study design, recruited patients for gene sequencing and drafted the manuscript. PRB arranged gene sequencing and genotyping, prepared the resulting genotyping files and submitted new SNPs to NCBI. KBH, HR, BH, MSN and KIB participated in study design and drafted the manuscript. JF, PA, JR, JV, KW, JRR and JD participated in subject recruitment and helped to the discussion. SL arranged for gene sequencing and genotyping. PMT picked out the T2DM case-control individuals from the HUNT2 study, prepared samples for genotyping, arranged the clinical data file for the HUNT2 individuals and drafted the manuscript. AM participated in the study planning, interpreted the data and participated in writing. HIN initiated the study, participated in study design, arranged the collaborations and drafted the manuscript. All authors read and approved the final manuscript.

Competing interests

The authors declare that they have no competing interests.

Received: 11 May 2010 Accepted: 12 October 2010
Published: 12 October 2010

References

1. Bensinger SJ, Tontonoz P: **Integration of metabolism and inflammation by lipid-activated nuclear receptors.** *Nature* 2008, **454**:470-477.
2. Baranowski M: **Biological role of liver X receptors.** *J Physiol Pharmacol* 2008, **59**(Suppl 7):31-55.
3. Zelcer N, Tontonoz P: **Liver X receptors as integrators of metabolic and inflammatory signaling.** *J Clin Invest* 2006, **116**:607-614.
4. Lu TT, Repa JJ, Mangelsdorf DJ: **Orphan nuclear receptors as eLiXRs and FiXeRs of sterol metabolism.** *J Biol Chem* 2001, **276**:37735-37738.
5. Zitzer H, Wenthe W, Brenner MB, Sewing S, Buschard K, Gromada J, Efanov AM: **Sterol regulatory element-binding protein 1 mediates liver X receptor-beta-induced increases in insulin secretion and insulin messenger ribonucleic acid levels.** *Endocrinology* 2006, **147**:3898-3905.
6. Janowski BA, Grogan MJ, Jones SA, Wisely GB, Kliewer SA, Corey EJ, Mangelsdorf DJ: **Structural requirements of ligands for the oxysterol liver X receptors LXRalpha and LXRbeta.** *Proc Natl Acad Sci USA* 1999, **96**:266-271.
7. Song C, Liao S: **Cholestenic acid is a naturally occurring ligand for liver X receptor alpha.** *Endocrinology* 2000, **141**:4180-4184.
8. Song C, Hiipakka RA, Liao S: **Selective activation of liver X receptor alpha by 6alpha-hydroxy bile acids and analogs.** *Steroids* 2000, **65**:423-427.
9. Gabbi C, Warner M, Gustafsson JA: **Minireview: liver X receptor beta: emerging roles in physiology and diseases.** *Mol Endocrinol* 2009, **23**:129-136.
10. Korach-Andre M, Parini P, Larsson L, Arner A, Steffensen KR, Gustafsson JA: **Separate and overlapping metabolic functions of LXRalpha and LXRbeta in C57Bl/6 female mice.** *Am J Physiol Endocrinol Metab* 2010, **298**:E167-178.
11. Gerin I, Dolinsky VW, Shackman JG, Kennedy RT, Chiang SH, Burant CF, Steffensen KR, Gustafsson JA, Macdougald OA: **LXRbeta is required for adipocyte growth, glucose homeostasis, and beta cell function.** *J Biol Chem* 2005, **280**:23024-23031.
12. Efanov AM, Sewing S, Bokvist K, Gromada J: **Liver X receptor activation stimulates insulin secretion via modulation of glucose and lipid metabolism in pancreatic beta-cells.** *Diabetes* 2004, **53**(Suppl 3):S75-S78.
13. Choe SS, Choi AH, Lee JW, Kim KH, Chung JJ, Park J, Lee KM, Park KG, Lee IK, Kim JB: **Chronic activation of liver X receptor induces beta-cell apoptosis through hyperactivation of lipogenesis: liver X receptor-mediated lipotoxicity in pancreatic beta-cells.** *Diabetes* 2007, **56**:1534-1543.
14. Schuster GU, Parini P, Wang L, Alberti S, Steffensen KR, Hansson GK, Angelin B, Gustafsson JA: **Accumulation of foam cells in liver X receptor-deficient mice.** *Circulation* 2002, **106**:1147-1153.
15. Lund EG, Menke JG, Sparrow CP: **Liver X receptor agonists as potential therapeutic agents for dyslipidemia and atherosclerosis.** *Arterioscler Thromb Vasc Biol* 2003, **23**:1169-1177.
16. Midthjell K, Kruger O, Holmen J, Tverdal A, Claudi T, Bjorndal A, Magnus P: **Rapid changes in the prevalence of obesity and known diabetes in an adult Norwegian population. The Nord-Trondelag Health Surveys: 1984-1986 and 1995-1997.** *Diabetes Care* 1999, **22**:1813-1820.
17. Thorsby PM, Midthjell K, Gjerlaugsen N, Holmen J, Hanssen KF, Birkeland KI, Berg JP: **Comparison of genetic risk in three candidate genes (TCF7L2, PPARG, KCNJ11) with traditional risk factors for type 2 diabetes in a population-based study—the HUNT study.** *Scand J Clin Lab Invest* 2009, **69**:282-287.
18. Miller SA, Dykes DD, Polesky HF: **A simple salting out procedure for extracting DNA from human nucleated cells.** *Nucleic Acids Res* 1988, **16**:1215.
19. The World Health Organization MONICA Project: **Ecological analysis of the association between mortality and major risk factors of cardiovascular disease.** *Int J Epidemiol* 1994, **23**:505-516.
20. Cottel D, Dallongeville J, Wagner A, Ruidavets JB, Arveiler D, Ferrieres J, Bingham A, Marecaux N, Ducimetiere P, Amouyel P: **The North-East-South gradient of coronary heart disease mortality and case fatality rates in France is consistent with a similar gradient in risk factor clusters.** *Eur J Epidemiol* 2000, **16**:317-322.
21. Moreno LA, Gonzalez-Gross M, Kersting M, Molnar D, De HS, Beghin L, Sjostrom M, Hagstromer M, Manios Y, Gilbert CC, Ortega FB, Dallongeville J, Arcella D, Warnberg J, Hallberg M, Fredriksson H, Maes L, Widhalm K, Kafatos AG, Marcos A: **Assessing, understanding and modifying nutritional status, eating habits and physical activity in European adolescents: the HELENA (Healthy Lifestyle in Europe by Nutrition in Adolescence) Study.** *Public Health Nutr* 2008, **11**:288-299.
22. Moreno LA, De HS, Gonzalez-Gross M, Kersting M, Molnar D, Gottrand F, Barrios L, Sjostrom M, Manios Y, Gilbert CC, Leclercq C, Widhalm K, Kafatos A, Marcos A: **Design and implementation of the Healthy Lifestyle in Europe by Nutrition in Adolescence Cross-Sectional Study.** *Int J Obes (Lond)* 2008, **32**(Suppl 5):S4-11.
23. Legry V, Bokor S, Cottel D, Beghin L, Catasta G, Nagy E, Gonzalez-Gross M, Spinneker A, Stehle P, Molnar D, Amouyel P, Dallongeville J, Meirhaeghe A: **Associations between common genetic polymorphisms in angiotensin-like proteins 3 and 4 and lipid metabolism and adiposity in European adolescents and adults.** *J Clin Endoc Metab* 2009, **94**:5070-5077.
24. Cole TJ, Bellizzi MC, Flegal KM, Dietz WH: **Establishing a standard definition for child overweight and obesity worldwide: international survey.** *BMJ* 2000, **320**:1-6.
25. **Third Report of the National Cholesterol Education Program (NCEP) Expert Panel on Detection Evaluation and Treatment of High Blood Cholesterol in Adults (Adult Treatment Panel III) final report.** *Circulation* 2002, **106**:3143-3421.
26. Nilsen H, Hayes B, Berg PR, Roseth A, Sundsaasen KK, Nilsen K, Lien S: **Construction of a dense SNP map for bovine chromosome 6 to assist the assembly of the bovine genome sequence.** *Anim Genet* 2008, **39**:97-104.
27. Cartharius K, Frech K, Grote K, Klocke B, Haltmeier M, Klingenhoff A, Frisch M, Bayerlein M, Werner T: **MatInspector and beyond: promoter analysis based on transcription factor binding sites.** *Bioinformatics* 2005, **21**:2933-2942.
28. Dalen KT, Ulven SM, Bamberg K, Gustafsson JA, Nebb HI: **Expression of the insulin-responsive glucose transporter GLUT4 in adipocytes is dependent on liver X receptor alpha.** *J Biol Chem* 2003, **278**:48283-48291.
29. Barrett JC, Fry B, Maller J, Daly MJ: **Haploview: analysis and visualization of LD and haplotype maps.** *Bioinformatics* 2005, **21**:263-265.
30. Tregouet DA, Garelle V: **A new JAVA interface implementation of THESIAS: testing haplotype effects in association studies.** *Bioinformatics* 2007, **23**:1038-1039.
31. Dahlman I, Nilsson M, Gu HF, Lecoeur C, Efendic S, Ostenson CG, Brismar K, Gustafsson JA, Froguel P, Vaxillaire M, Dahlman-Wright K, Steffensen KR: **Functional and genetic analysis in type 2 diabetes of liver X receptor alleles—a cohort study.** *BMC Med Genet* 2009, **10**:27.
32. Dahlman I, Nilsson M, Jiao H, Hoffstedt J, Lindgren CM, Humphreys K, Kere J, Gustafsson JA, Arner P, Dahlman-Wright K: **Liver X receptor gene polymorphisms and adipose tissue expression levels in obesity.** *Pharmacogenet Genomics* 2006, **16**:881-889.

Pre-publication history

The pre-publication history for this paper can be accessed here:
<http://www.biomedcentral.com/1471-2350/11/144/prepub>

doi:10.1186/1471-2350-11-144

Cite this article as: Solaas et al.: Suggestive evidence of associations between liver X receptor $\beta\beta$ polymorphisms with type 2 diabetes mellitus and obesity in three cohort studies: HUNT2 (Norway), MONICA (France) and HELENA (Europe). *BMC Medical Genetics* 2010 **11**:144.