

Modelers' Perception of Mathematical Modeling in Epidemiology: A Web-Based Survey

Gilles Hejblum, Michel Setbon, Laura Temime, Sophie Lesieur, Alain-Jacques
Valleron

► **To cite this version:**

Gilles Hejblum, Michel Setbon, Laura Temime, Sophie Lesieur, Alain-Jacques Valleron. Modelers' Perception of Mathematical Modeling in Epidemiology: A Web-Based Survey: Mathematical Modeling in Epidemiology. PLoS ONE, Public Library of Science, 2011, 6 (1), pp.e16531. <10.1371/journal.pone.0016531>. <inserm-00563191>

HAL Id: inserm-00563191

<http://www.hal.inserm.fr/inserm-00563191>

Submitted on 4 Feb 2011

HAL is a multi-disciplinary open access archive for the deposit and dissemination of scientific research documents, whether they are published or not. The documents may come from teaching and research institutions in France or abroad, or from public or private research centers.

L'archive ouverte pluridisciplinaire **HAL**, est destinée au dépôt et à la diffusion de documents scientifiques de niveau recherche, publiés ou non, émanant des établissements d'enseignement et de recherche français ou étrangers, des laboratoires publics ou privés.

Modelers' Perception of Mathematical Modeling in Epidemiology: A Web-Based Survey

Gilles Hejblum^{1,2,3*}, Michel Setbon^{4,5}, Laura Temime⁶, Sophie Lesieur^{1,2}, Alain-Jacques Valleron^{1,2,3}

1 INSERM, U707, Paris, France, **2** UPMC Univ Paris 06, Faculté de Médecine Pierre et Marie Curie, UMR S 707, Paris, France, **3** AP-HP, Hôpital Saint Antoine, Unité de Santé Publique, Paris, France, **4** CNRS, UMR 6123, Aix-En-Provence, France, **5** Université de la Méditerranée, Laboratoire d'Économie et de Sociologie du Travail, Aix-En-Provence, France, **6** CNAM, Chaire Hygiène & Sécurité, Paris, France

Abstract

Background: Mathematical modeling in epidemiology (MME) is being used increasingly. However, there are many uncertainties in terms of definitions, uses and quality features of MME.

Methodology/Principal Findings: To delineate the current status of these models, a 10-item questionnaire on MME was devised. Proposed via an anonymous internet-based survey, the questionnaire was completed by 189 scientists who had published in the domain of MME. A small minority (18%) of respondents claimed to have in mind a concise definition of MME. Some techniques were identified by the researchers as characterizing MME (e.g. Markov models), while others—at the same level of sophistication in terms of mathematics—were not (e.g. Cox regression). The researchers' opinions were also contrasted about the potential applications of MME, perceived as highly relevant for providing insight into complex mechanisms and less relevant for identifying causal factors. The quality criteria were those of good science and were not related to the size and the nature of the public health problems addressed.

Conclusions/Significance: This study shows that perceptions on the nature, uses and quality criteria of MME are contrasted, even among the very community of published authors in this domain. Nevertheless, MME is an emerging discipline in epidemiology and this study underlines that it is associated with specific areas of application and methods. The development of this discipline is likely to deserve a framework providing recommendations and guidance at various steps of the studies, from design to report.

Citation: Hejblum G, Setbon M, Temime L, Lesieur S, Valleron A-J (2011) Modelers' Perception of Mathematical Modeling in Epidemiology: A Web-Based Survey. PLoS ONE 6(1): e16531. doi:10.1371/journal.pone.0016531

Editor: Enrico Scalas, Università del Piemonte Orientale, Italy

Received: October 21, 2010; **Accepted:** December 20, 2010; **Published:** January 31, 2011

Copyright: © 2011 Hejblum et al. This is an open-access article distributed under the terms of the Creative Commons Attribution License, which permits unrestricted use, distribution, and reproduction in any medium, provided the original author and source are credited.

Funding: This work was supported by a grant from the program "Sciences Biomédicales, Santé et Société" of the Centre National de la Recherche Scientifique-Institut National de Santé et de la Recherche Médicale-Mission Recherche de la Direction Régionale de la Recherche, des Études, de l'Évaluation et des Statistiques. The funders had no role in study design, data collection and analysis, decision to publish, or preparation of the manuscript.

Competing Interests: The authors have declared that no competing interests exist.

* E-mail: gilles.hejblum@inserm.fr

Introduction

The increased use of mathematical modeling in epidemiology (MME) is widely acknowledged [1]. When data are not there, or not yet there, MME provides rationales in Public Health problems to support decisions in Public Health, and this constitutes one of the reasons for the increased use of MME. For example, some models have been proposed for estimating non observable putative risks of importance in terms of public health, such as the risk of cancer after exposure to diagnostic radiations [2], the residual infectious risks in blood transfusion [3], or the future size of a the epidemic of an emergent disease [4]. MME is also unavoidable in economic studies [5,6] and has been used for studying the dynamics and control of epidemics of infectious diseases [7]. For example MME has been widely applied to influenza pandemics (see among many references, refs [8,9,10,11]). In addition, MME provides insights on the role of possible determinants of diseases that were overlooked in the traditional epidemiological approaches: for example Christakis et al reanalyzed the iconic Framingham studies and showed that some network sociological properties could explain observed trends in the incidence of several chronic diseases [12,13].

The above list of key public health domains attests for the diversity and interest of problems for which MME might be involved in supporting public decision. Such an involvement both reassures and worries the decision makers and the public at large who eventually have concerns on the nature of the science of MME. Indeed, the heterogeneity of the methods used in MME, as well as the diversity of the problems addressed raises several questions: is there a simple shared definition for this emerging scientific discipline? Is MME only mainly aimed to answer questions of decision makers, or is it a scientific discipline of its own? What are the criteria of good science in MME? To answer these questions, we chose to collect the opinions of the scientists who actually do MME. We present here the results that were observed on a panel of scientists who participated in a web-based survey investigating the above issues.

Materials and Methods

Survey participants

We constituted a panel of researchers who had published academic papers in the field of MME through a search in the

Definition and Limits

Q1. In your opinion, does the use of any of the following analytical methods in a study qualify the latter as belonging in the field of MME*?

(1 = yes; 2 = no; 3 = can't say)

- Computation of odds ratios
- Logistic regression
- Cox regression
- Multilevel models
- Back-calculation
- Markov model
- Basic reproduction number (R_0)
- Differential equations
- Monte Carlo simulation

Q2. Do you have a concise definition of MME?

- No, there's no such definition
- No, I would need more time to state it
- If yes, please give your definition:

Objectives and Domains of Application

Q3. Is MME applicable in any of the situations listed below?

Give your own rating from 1 to 9 for each item concerning its relevance to MME use. (1 = not relevant at all; 9 = very relevant)

- To describe phenomena that cannot be observed
- To predict a future state of world
- To support decision-making
- To provide insight into the mechanisms of complex systems

Q4. The following list consists of five public health issues.

Give your own rating from 1 to 9 for each item concerning its relevance to MME use. (1 = not relevant at all; 9 = very relevant)

- Infectious diseases
- Environmental risks
- Emerging risks and diseases
- Putative, currently undemonstrated risks
- Chronic diseases

Q5. Issues potentially addressed by MME are listed below.

Give your own rating from 1 to 9 for each item concerning its relevance to MME use. (1 = not relevant at all; 9 = very relevant)

- Search for causal factors (of a disease)
- Estimation of a risk
- Estimation of exposure
- Exploration of intervention scenarios

Quality and Success Features

Q6. Some features that may define "good" MME are listed below. Give your own rating from 1 to 9 for each item.

Give your own rating from 1 to 9 for each item. (1 = not relevant at all; 9 = very relevant)

- An MME must be grounded on data
- It should be possible to validate an MME with actual data
- MME results must substantiate some kind of generality
- An MME must be considered good science by mathematician specialists for the methods used
- An MME must be considered good science by the life science specialists from the domain of application
- An MME has to be used by decision-makers
- An MME must include a sensitivity analysis

Q7. Some characteristics concerning the construction of an MME are listed below.

Give your own rating from 1 to 9 for each item. (1 = not relevant at all; 9 = very relevant)

- The authors should include at least one mathematician (pure or applied mathematics)
- The authors should include at least one specialist from the domain of application
- An MME should originate from an academic environment
- An MME should originate from an official request

Q8. Some criteria of a successful MME are listed below.

Give your own rating from 1 to 9 for each item concerning its relevance to MME use. (1 = not relevant at all; 9 = very relevant)

- To be published in peer reviewed journals
- To be cited in the scientific literature
- To be cited in the general press
- To be used by health authorities

Q9. In some circumstances, standard epidemiological methods cannot be used, and MME is used to address the issues instead.

In your opinion, does MME provide the same strength of conviction as that obtained with each of the three following situations?

(1 = never; 2 = sometimes; 3 = often)

- Estimation of disease burden: surveillance vs MME
- Risk assessment: cohort or case-control study vs MME
- Evaluation of interventions: randomized trial vs MME

Q10. What do you think about the following sentence applied to MME: "All models are wrong, some of them are useful".

(Select only one answer)

- I agree
- I disagree
- It reflects a profound ignorance of MME

Figure 1. The questionnaire of the survey.

doi:10.1371/journal.pone.0016531.g001

Science Citation Index database via the Web of Sciences (Thomson Reuters, NY). In a query made on February 2, 2007, we identified all papers published since 2002 containing the terms “mathematical model*” (* is a wildcard end of the term) in the title, the abstract, or among the keywords and published in a journal belonging to at least one of the six following categories of the Journal of Citation Reports (Thomson Reuters, NY): public, environmental & occupational health; infectious diseases; oncology; medicine, research & experimental; social sciences, mathematical methods; medicine, general & internal. This search retrieved 920 articles. The email address of the corresponding author was documented in the Web of Science records for 529 of the 920 papers, yielding one email address for 482 different authors. We manually searched for the email addresses of the corresponding authors of the 391 remaining articles, which in turn provided a second series of 301 additional email addresses. In the end, 126 of the total 783 addresses returned an error message, being wrong or more likely obsolete. Finally, we obtained a list of 657 authors with a valid email.

We emailed these 657 authors to invite them to participate anonymously in our survey, as we provided each author with an anonymous and personal login. The survey was developed through the Internet using phpESP freeware [14]. Our website hosted the survey and was open during two periods: from October 11 to October 27, and from November 11 to December 8, 2007. During these periods, reminders were sent to all the potential participants.

Each participant was asked to provide his age, background, present academic position and country of work. The survey was completed by 189 participants (29% response rate) who constituted the panel herein analyzed. 49% of the respondents were under 45 years old. Most (75%) participants answered that they had a background in mathematics or physics; 40% were university teachers or researchers, 36% were researchers with institution responsibilities (faculty head, institute head, department head, lab head, research director, or senior researcher), 9% were postdoctoral researchers, and 6% were senior medical doctors. The percentages of participants working in America, Europe, Asia, Africa and Australia, were respectively 46% (including 36% from the USA and 5% from Canada), 38% (including 12% from U.K.), 8%, 2% and 6%.

In your opinion, does the use of any of the following methods in a study qualify the latter as belonging in the field of MME?

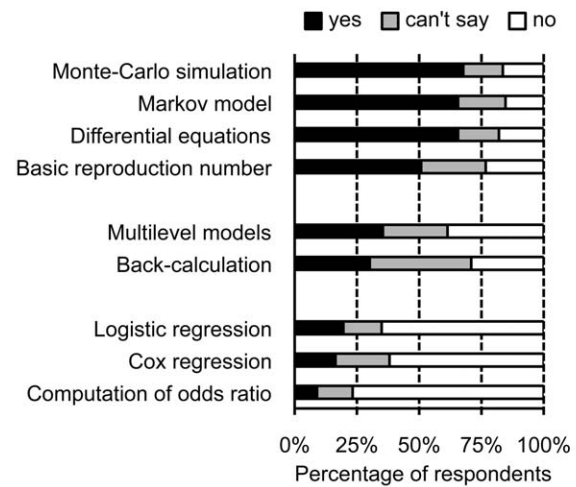


Figure 2. Perceived relevances of nine techniques for qualifying a study in the field of mathematical modeling in epidemiology (MME).

doi:10.1371/journal.pone.0016531.g002

Questionnaire

The questionnaire was composed of ten one-minute questions (Figure 1). The answer required for questions Q3 to Q8 was obtained by clicking on a 9-point scale, with 1 corresponding to “not relevant at all”, and 9 to “very relevant”. Questions Q1 and Q2 concerned the author’s definitions of a MME. Questions Q3 to Q5 investigated the conceptual objectives of MME (Q3 and Q5) and public health domains of applications (Q4). The five remaining questions (Q6–Q10) explored quality and success features associated with the use of these models: three questions examined criteria for quality (Q6 and Q7) and success (Q8); Q9 evaluated whether the panelists perceived a difference between the strengths of conviction of the results derived from statistical

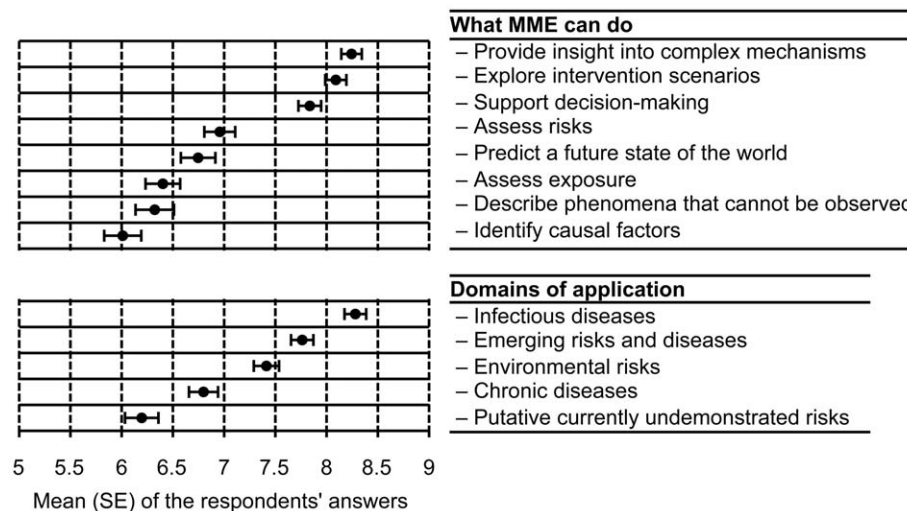


Figure 3. Perceived role of mathematical modeling in epidemiology (MME). Means and standard error (SE) of the responses obtained for each item are shown. Respondents scored each item on a 1–9 scale (1 = not relevant at all, 9 = very relevant). Top panel: items from questions Q3 and Q5; bottom panel: items from question Q4. The exact formulations of questions Q3 to Q5 are in Figure 1.

doi:10.1371/journal.pone.0016531.g003

epidemiology and those from MME. Finally, we asked the participants their opinions on the statement “All models are wrong, some may be useful” (Q10), made by the statistician George Box who co-authored the Box and Jenkins method [15].

Statistical analysis

Answers to Q1 were recoded on an ordinal 3-point scale (“no”, “can’t say” and “yes” were respectively recoded as 1, 2 and 3), as were responses to Q9 (“never”, “sometimes” and “often” were respectively recoded as 1, 2 and 3). Considering all the items investigated in Q1 and in Q3–Q9, the respondents’ answers to the items of a question (or a group of questions) were handled as measures issued from a complete block design, the first (fixed) factor being the explored item, the second (block, random) factor being the respondent. Therefore, when analyzing the potential differences in the responses to several items, we performed multiple comparisons between all considered items using the Wilcoxon–Nemenyi–McDonald–Thompson procedure recommended by Hollander and Wolfe [16]. This procedure identifies potential clusters of items, with a non-significant ($P > 0.05$) difference between any two items belonging to a given cluster and, conversely, a significant ($P \leq 0.05$) difference between any two items belonging to two distinct clusters. R statistical software [17], version 2.9.0, was used for all analyses.

Results

Considering the definition of MME addressed in question Q2, 22% of the respondents answered that no such definition exists, and 60% indicated that they would need (more) time to state it. Question Q1 investigated whether the uses of 9 mathematical or statistical methods frequently used in epidemiology were judged by the panel as characterizing the field of MME. The multiple comparison analysis identified three clusters of items (Figure 2). The first cluster groups items (Monte-Carlo simulation, differential equations, Markov model, basic reproduction number R0) for which most respondents considered that the use of the technique

in the analysis qualifies the study as belonging to the MME field. In contrast, standard statistical epidemiological techniques (logistic regression, Cox regression and computation of odds ratio) constituted a second cluster of items for which only a small minority of respondents considered their use is sufficient to qualify the study as belonging to the MME domain. The intermediate cluster was comprised of multilevel models and back-calculation. Multilevel models, which are plain statistical techniques, were placed in this intermediate group, not in the statistical tools’ category, and back-calculation was considered by only a minority of the respondents as qualifying a study as belonging to MME.

The eight different possible roles and five domains of application of MME suggested were ranked by the participants (Figure 3). The most prominent MME roles identified by the respondents were the capacity to provide insight into a complex mechanism and, in terms of health policy, to explore intervention scenarios and to support decision-making. At the opposite end, the least recognized MME role was the identification of causal factors. The possible use of MME to investigate putative presently undemonstrated risks received a very low rating. Finally, the respondents clearly ranked the different domains of application, putting infectious diseases at the top and chronic diseases at the bottom.

The last dimension explored in the survey addressed the perceived determinants of a “good MME”, in terms of quality and success (Figure 4). The criteria of the panel are (not surprisingly) academic, as evidenced by the ranking of the quality features. The fact that the MME has originated from an official request got the lowest ranking, and even the fact of being used in practice by decision-makers was rated low. Academic values, again, were considered as the main criteria of success of MME (Figure 4). Indeed, the major perceived success of a model is to be published in good scientific journals, not in the lay press. No significant difference was found between public health domains in terms of the perceived strength of conviction provided by statistical or mathematical epidemiology (Table 1). Box’s provocative remark was endorsed by 65% of the respondents, 20% disagreed, and 15% labeled it as “reflecting a deep ignorance of MME”.

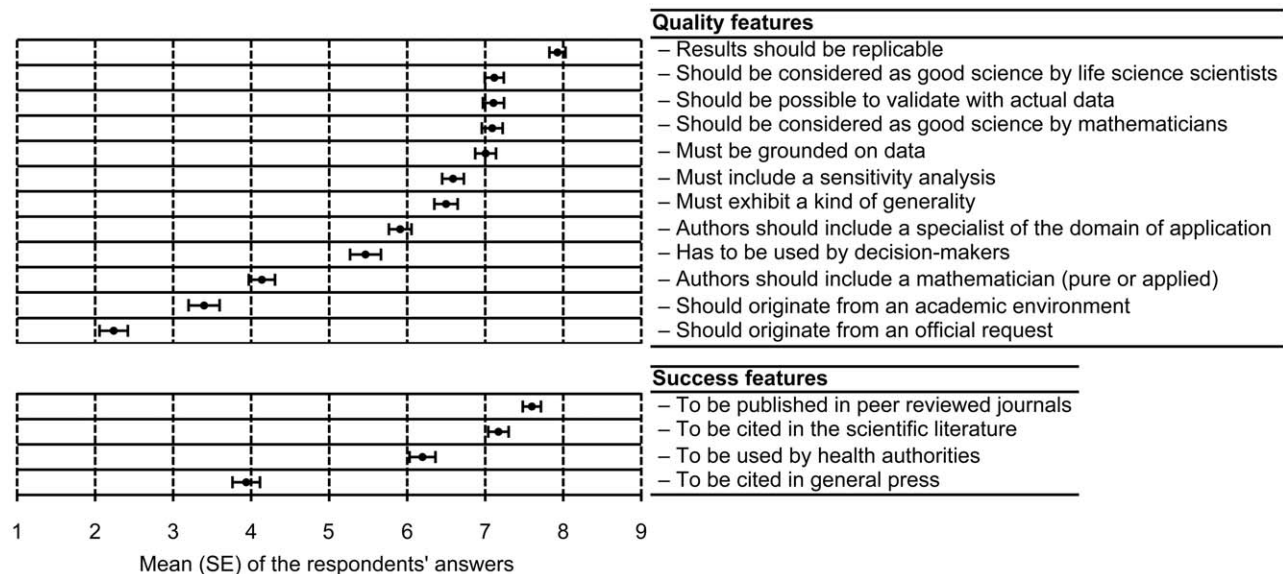


Figure 4. Perceived quality and success features of mathematical modeling in epidemiology. Means and standard error (SE) of the responses obtained for each item are shown. Respondents scored each item on a 1–9 scale (1 = not relevant at all, 9 = very relevant). Top panel: items from questions Q6 and Q7; bottom panel: items from question Q8. The exact formulation of questions Q6 to Q8 are in Figure 1. doi:10.1371/journal.pone.0016531.g004

Table 1. Strengths of conviction obtained by mathematical modeling in epidemiology (MME) versus standard epidemiological methods.

Answer to "Results from MME as convincing as results from standard epidemiological methods?" [*]	Public health domain		
	Estimation of burden of disease (%) [†]	Risk assessment (%) [†]	Evaluation of intervention (%) [†]
Never	14	17	22
Sometimes	71	68	54
Often	15	15	24

^{*}The exact formulation of the question is in Table 1 (Q9).

[†]Percent of answers, n = 189.

Multiple comparisons between the 3 public health domains all resulted in non significant differences: estimation of burden of disease versus risk assessment and versus evaluation of intervention, $P=0.97$ and $P=0.81$, respectively; risk assessment versus evaluation of intervention, $P=0.66$.

doi:10.1371/journal.pone.0016531.t001

Discussion

The response rate to the present survey was 29%, within the range of the rate reported for Web-based surveys (median at 27%) [18]. This rate does not impact our results. The purpose of our work was not to provide figures on the perception of MME in researchers or epidemiologists at large, but to rank these perceptions. For example, the panel researchers' much higher ranking of MME relevance in infectious disease than in chronic diseases can certainly be safely extrapolated. This is the usual situation in epidemiology: absolute values observed on a particular study are difficult to extrapolate, but differences and correlations within the group can be safely extrapolated.

The first question we posed was about the identity of MME, given the large diversity of methods and uses, as underlined by Weinstein et al [19]. The results show that the use of statistical "models", such as the Cox Model, is not considered by the researchers as qualifying a work as in the field of MME, while conversely, Monte Carlo simulations, Markov models and differential equations are. The use of the basic reproductive number in a paper was also considered as a good indicator of MME, with a more modest score achieved (51%) that might be due to the fact that R_0 is increasingly viewed as a general epidemiological concept. Conversely, even if back-calculation can be considered as a historical success story of mathematical epidemiology [20], it is however viewed more as a statistical technique, computationally demanding. All in all, mathematical modelers appear to characterize models more by the abstraction of

References

- Chubb MC, Jacobsen KH (2010) Mathematical modeling and the epidemiological research process. *Eur J Epidemiol* 25: 13–19.
- Brenner DJ, Doll R, Goodhead DT, Hall EJ, Land CE, et al. (2003) Cancer risks attributable to low doses of ionizing radiation: assessing what we really know. *Proc Natl Acad Sci U S A* 100: 13761–13766.
- Schreiber GB, Busch MP, Kleinman SH, Korelitz JJ (1996) The risk of transfusion-transmitted viral infections. The Retrovirus Epidemiology Donor Study. *N Engl J Med* 334: 1685–1690.
- Valleron AJ, Boelle PY, Will R, Cesbron JY (2001) Estimation of epidemic size and incubation time based on age characteristics of vCJD in the United Kingdom. *Science* 294: 1726–1728.
- Custer B, Busch MP, Marfin AA, Petersen LR (2005) The cost-effectiveness of screening the U.S. blood supply for West Nile virus. *Ann Intern Med* 143: 486–492.
- Sander B, Nizam A, Garrison LPJ, Postma MJ, Halloran ME, et al. (2009) Economic evaluation of influenza pandemic mitigation strategies in the United States using a stochastic microsimulation transmission model. *Value Health* 12: 226–233.
- Grassly NC, Fraser C (2008) Mathematical models of infectious disease transmission. *Nat Rev Microbiol* 6: 477–487.
- Halloran ME, Ferguson NM, Eubank S, Longini Jr. IM, Cummings DA, et al. (2008) Modeling targeted layered containment of an influenza pandemic in the United States. *Proc Natl Acad Sci U S A* 105: 4639–4644.

the representation of the epidemiological mechanisms studied (e.g. transmission, immunity) than by the sophistication of the underlying mathematical tools.

The second question aimed at delineating the limits of what models can and cannot do from the point of view of those who produce them. The answers are that MME is more suited for clarifying the laws underlying complex mechanisms, for supporting decision-making, and for exploring intervention scenarios. MME is not perceived as competing with standard epidemiology for the discovery of the causes of the diseases and/or risk factors. Infectious diseases, emerging risks and diseases, and environmental risks, were scored as domains for which MME is highly applicable.

The third question aimed at identifying the determinants of a "good" model. Keeling and Rohani stated that what constitutes a good model depends on the context [21]. Notably, modelers think that decision-making is an important goal of MME but do not consider practical use of their models by health authorities for decision-making as an adequate criterion of MME quality. Modelers acknowledge the gap between their scientific output and public uses of it to which they are not automatically associated. The quality features perceived by the respondents all relate to scientific excellence. The finding that the values of the mathematical modelers in epidemiology are clearly academic has two practical consequences. First, scientific policy makers and proposal evaluators in the field of MME should be aware that these researchers expect that an assessment of their projects, works and even careers be primarily based on their intrinsic scientific quality, not their public health "usefulness". Second, public health decision-makers should keep that finding in mind, when modelers do not provide quick and simple answers to the problems they pose; above all, modelers are driven in their agendas by the quality and originality of the methods they develop, even when the general direction of their work is oriented by important public health issues.

In conclusion, this study shows that perceptions on the nature, uses and quality criteria of MME are contrasted, even among the very community of published authors in this domain. Nevertheless, MME is an emerging discipline in epidemiology and this study underlines that it is associated with specific areas of application and methods. The development of this discipline is likely to deserve a framework providing recommendations and guidance at various steps of the studies, from design to report. Previous similar proposals in other domains of epidemiology have been successful. For example, CONSORT guidelines in the domain of clinical randomized trials [22,23], represent a prototype of what could be done in the domain of MME.

Author Contributions

Conceived and designed the experiments: GH MS LT SL AJV. Performed the experiments: GH. Analyzed the data: GH AJV. Contributed reagents/materials/analysis tools: GH SL. Wrote the paper: GH MS LT SL AJV. Initiated the study and obtained the grant: MS AJV.

9. Lipsitch M, Cohen T, Murray M, Levin BR (2007) Antiviral resistance and the control of pandemic influenza [electronic article]. *PLoS Med* 4: e15.
10. Van Kerkhove MD, Asikainen T, Becker NG, Bjorge S, Desenclos JC, et al. (2010) Studies needed to address public health challenges of the 2009 H1N1 influenza pandemic: insights from modeling. *PLoS Med* 7: e1000275.
11. Moghadas SM, Bowman CS, Rost G, Wu JH (2008) Population-Wide Emergence of Antiviral Resistance during Pandemic Influenza. *Plos One* 3: e1839.
12. Christakis NA, Fowler JH (2007) The spread of obesity in a large social network over 32 years. *N Engl J Med* 357: 370–379.
13. Christakis NA, Fowler JH (2008) The collective dynamics of smoking in a large social network. *N Engl J Med* 358: 2249–2258.
14. Butterfat LLC phpESP. Available from: <http://www.butterfat.net/wiki/Projects/phpESP> (Accessed 2010 July 07).
15. Box GEP, Jenkins GM (1976) *Time Series Analysis: Forecasting and Control*; San Francisco: Holden-Day.
16. Hollander M, Wolfe DA (1999) The two-way layout: Distribution-free two-sided all-treatments multiple comparisons based on Friedman rank sums- General configuration (Wilcoxon, Nemenyi, McDonald–Thompson). In: *Nonparametric Statistical Methods*. Second edition New York: John Wiley & Sons, Inc. pp 295–299.
17. R Development Core Team (2008) *R: A language and environment for statistical computing*. Version 2.9. Vienna: R Foundation for Statistical Computing (<http://www.R-project.org>).
18. Shih T, Fan X (2008) Comparing response rates from Web and mail surveys: A meta-analysis. *Field Methods* 20: 249–271.
19. Weinstein MC, Toy EL, Sandberg EA, Neumann PJ, Evans JS, et al. (2001) Modeling for health care and other policy decisions: uses, roles, and validity. *Value Health* 4: 348–361.
20. Kalbfleisch JD, Lawless JF (1989) Estimating the incubation time distribution and expected number of cases of transfusion-associated acquired immune deficiency syndrome. *Transfusion* 29: 672–676.
21. Keeling MJ, Rohany P (2008) Introduction. *Modeling Infectious Diseases in Humans and Animals*. Princeton, NJ: Princeton University Press. pp 1–13.
22. Altman DG, Schulz KF, Moher D, Egger M, Davidoff F, et al. (2001) The revised CONSORT statement for reporting randomized trials: explanation and elaboration. *Ann Intern Med* 134: 663–694.
23. Moher D, Schulz KF, Altman DG (2001) The CONSORT statement: revised recommendations for improving the quality of reports of parallel-group randomised trials. *Lancet* 357: 1191–1194.