

Progressive osseous heteroplasia: a model for the imprinting effects of GNAS inactivating mutations in humans.

Marine Lebrun, Nicolas Richard, Geneviève Abeguilé, Albert David, Anne Coëslier Dieux, Hubert Journal, Didier Lacombe, Graziella Pinto, Sylvie Odent, Jean-Pierre Salles, et al.

► **To cite this version:**

Marine Lebrun, Nicolas Richard, Geneviève Abeguilé, Albert David, Anne Coëslier Dieux, et al.. Progressive osseous heteroplasia: a model for the imprinting effects of GNAS inactivating mutations in humans.. *Journal of Clinical Endocrinology and Metabolism*, Endocrine Society, 2010, 95 (6), pp.3028-38. <10.1210/jc.2009-1451>. <inserm-00480041>

HAL Id: inserm-00480041

<http://www.hal.inserm.fr/inserm-00480041>

Submitted on 8 Aug 2011

HAL is a multi-disciplinary open access archive for the deposit and dissemination of scientific research documents, whether they are published or not. The documents may come from teaching and research institutions in France or abroad, or from public or private research centers.

L'archive ouverte pluridisciplinaire **HAL**, est destinée au dépôt et à la diffusion de documents scientifiques de niveau recherche, publiés ou non, émanant des établissements d'enseignement et de recherche français ou étrangers, des laboratoires publics ou privés.

Progressive Osseous Heteroplasia: A Model for the Imprinting Effects of *GNAS* Inactivating Mutations in Humans

M. Lebrun,* N. Richard,* G. Abeguilié, A. David, A. Coëslie Dieux, H. Journal, D. Lacombe, G. Pinto, S. Odent, J. P. Salles, A. Taieb, S. Gandon-Laloum, and M. L. Kottler

Department of Genetics and Reproduction (M.L., N.R., G.A., M.L.K.), Laboratory of Biology Molecular, Reference Center for Rare Disorders of Calcium and Phosphorus Metabolism, and Department of Pediatric Surgery (S.G.-L.), University Hospital-Caen, 14033 Caen, France; Department of Clinical Genetics (A.D.), University Hospital-Nantes, 44000 Nantes, France; Department of Clinical Genetics (A.C.D.), University Hospital-Lille, 59037 Lille, France; Department of Medical Genetics (H.J.), Hospital Bretagne Atlantique, 56017 Vannes, France; Department of Medical Genetics (D.L., A.T.), University Hospital-Bordeaux, University of Bordeaux 2, 33404 Talence, France; Department of Pediatric Endocrinology (G.P.), Necker Hospital, 75743 Paris, France; Department of Clinical Genetics (S.O.), Rare Diseases Center for Development Anomalies, University Hospital-Rennes, University of Rennes 1, 35033 Rennes France; Unit of Endocrinology and Bones Diseases (J.P.S.), Reference Center for Rare Disorders of Calcium and Phosphorus Metabolism, Children's Hospital; and Institut National de la Santé et de la Recherche Médicale Unité 563 (CPTP), University Hospital-Toulouse, 31059 Toulouse, France

Context: Heterozygous *GNAS* inactivating mutations are known to induce pseudohypoparathyroidism type 1a when maternally inherited and pseudopseudohypoparathyroidism when paternally inherited. Progressive osseous heteroplasia (POH) is a rare disease of ectopic bone formation, and studies in different families have shown that POH is also caused by paternally inherited *GNAS* mutations.

Objective: Our purpose was to characterize parental origin of the mutated allele in *de novo* cases of POH and to draw phenotype/genotype correlations according to maternal or paternal transmission of a same *GNAS* mutation.

Design and Setting: We conducted a retrospective study on patients addressed to our referral center for the rare diseases of calcium and phosphorus metabolism.

Patients and Methods: We matched 10 cases of POH with cases of pseudohypoparathyroidism type 1a carrying the same *GNAS* mutations.

Main Outcome Measures: The parental origin of the mutated allele was studied using informative intragenic polymorphisms and subcloning of PCR products.

Results: Paternal origin of *GNAS* mutations was clearly demonstrated in eight POH cases including one patient with mutation in exon 1. Genotype/phenotype analyses suggest that there is no direct correlation between the ossifying process and the position of the inactivating *GNAS* mutation. It is, however, more severe in patients in whom origin of the mutation is paternal. Severe intrauterine growth retardation was clearly evidenced in paternally inherited mutations.

Conclusions: Clinical heterogeneity makes genetic counseling a delicate matter, especially in which paternal inheritance is concerned because it can lead to either a mild expression of pseudopseudohypoparathyroidism or a severe expression of POH. (*J Clin Endocrinol Metab* 95: 3028–3038, 2010)

Progressive osseous heteroplasia (POH; online inheritance in man 166350) is characterized by progressive heterotopic ossification during infancy that initially occurs within the dermis and sc fat (osteoma cutis) and then extends progressively into deep connective tissue and skeletal muscle (1). It is a rare syndrome, with less than 100 cases described in the literature. POH was recently included in the phenotypic spectrum of *GNAS* inactivation mutations (2). *GNAS* encodes for a guanine nucleotide-binding protein (*G α s* protein) and is mapped to locus 20q13.2-13.3, a complex locus subject to parental imprinting. This locus gives rise to several different transcripts expressed from upstream promoters/first exons and is spliced onto shared downstream exons from exon 2 onward with different patterns of imprinted expression. Hence, they may be derived from the paternal allele (*XL α s*, *NESPAS*, and exon 1A), the maternal allele (*NESP55*), or both (*G α s*) and can be either coding (*G α s* and *XL α s*, *NESP55*) or nontranslated (exon 1A and *NESPA*) (3). Whereas *NESP55*, which encodes the chromogranin-like neuroendocrine secretory protein, is confined to the single first exon, *XL α s* has an open reading frame contiguous with that of *G α s* such that it encodes a protein (*XL α s*) in which the N-terminal end of *G α s* is replaced by a large acidic XL domain. As a consequence, *GNAS* mutations lead to a wide spectrum of phenotypes (4, 5). Heterozygous inactivating *GNAS* mutations are known to induce pseudohypoparathyroidism type 1a (PHP1a; online inheritance in man 103580) and pseudopseudohypoparathyroidism (PPHP; online inheritance in man 300800).

PHP1a is characterized by Albright's hereditary osteodystrophy (AHO) and is associated with multiple hormone resistance, particularly to PTH and TSH if the maternal allele is mutated. Indeed, this is the only allele expressed in the imprinted tissue (3, 5, 6), in particular in the proximal renal tubule (7), pituitary gland (8), thyroid (9, 10), and gonads (10). PPHP, on the other hand, is defined by isolated AHO clinical syndrome with no hormonal resistance (normal PTH level). Recently, in their analysis of cases of familial transmission, Shore *et al.* (2) provided evidence that POH is caused by paternally inherited *GNAS* mutations.

In this study, we conducted clinical, biological, and genetic studies of patients referred to our laboratory as having POH. Because only about 20 *GNAS* mutations (2, 4, 11–16) had previously been reported with POH, to our knowledge, our aim was to learn whether specific mutations were associated with POH phenotype. We also studied the pattern of inheritance and attempted to clarify how phenotype/genotype correlations might change according to maternal or paternal transmission of *GNAS* mutation to further understand the differences and similarities be-

tween these two conditions. For this purpose, patients diagnosed with PHP1a in whom the same mutation was found were selected from our database. Last but not least, this paper will for the first time put forward data from a human case study that is able to distinguish between *XL α s* functions and paternal *G α s* haploinsufficiency in humans.

Patients and Methods

Patients

Ten patients from unrelated families (numbered 1–10), with clinical phenotypes evoking POH and carrying a *GNAS* mutation were studied. These patients were recruited through clinical geneticists or dermatologists. The clinical criteria used for diagnosis of POH are those described by Kaplan and colleagues (1, 17), *i.e.* the presence of heterotopic ossifications progressing from cutaneous and sc tissue into deep connective and muscular tissue. In patients 1, 3, 5, 8, and 10, the tissue depth of the calcifications was ascertained by computed tomography (CT) imaging.

All of the evaluated subjects have no remarkable familial history, except for one family (family 7) with familial cases.

Nine patients from seven unrelated families (referenced A–G) carrying the same mutations as POH cases and diagnosed with PHP1a were selected from our database or the literature (patient D) (18). The clinical criteria used for AHO diagnosis included brachymetacarpia (of fourth and fifth ray), round-shaped face, short stature (below -2 SD), excess weight or obesity (body mass index $>85\%$ for age), and more or less associated with the following variable features: mental retardation, sc calcifications, and intracerebral calcifications.

Birth biometrics data were compared with the French reference chart AUDIPOG and results were expressed as centiles (19).

Laboratory investigations

Biochemical and endocrine analyses were performed using standard methods, with calcium, phosphate, and PTH measurements for all patients.

PTH resistance was defined by low calcium concentration (<2.2 mmol/liter), high serum phosphate concentration according to age, and increased serum level of PTH according to the normal values of the laboratory. The biological activity of *G α s* protein (*G α s* bioactivity) was quantitatively evaluated in erythrocytes following the procedure described by Marguet *et al.* (20). Results were expressed in percentage of activity of normal adult controls. *G α s* bioactivity values less than 80% were considered to be reduced.

In two cases (patients 7 and 9), urinary cAMP response to synthetic human PTH administration was evaluated (Ellsworth-Howard test).

Statistical analysis

G α s activity between POH/PPHP and PHP1a patient was compared using the Student *t* test.

Molecular analysis

For each family, written informed consent was obtained from both patients and their parents for collection of DNA and molecular study. Genomic DNA was isolated from peripheral blood leukocytes using standard methods. We designed several sets of

primers for amplification of exons 1–13 of the *GNAS* gene and intron-exon junctions adapted from published sequences (21). PCRs were performed according to standard procedure except for exon 1 due to the highly GC-rich sequences. It may be summarized as follows: denaturation at 94 C for an initial phase of 5 min, followed by 10 cycles of 1 min at 94 C, 2 min at 72 C with a decrement of 1 C per cycle, 7 min at 72 C, followed by 30 cycles of 2 min at 94 C, 2 min at 68 C, 7 min at 72 C, and 10 min at 72 C. PCR products were purified and sequenced using the CEQ DTCS Quick Start kit (Beckman Coulter, Fullerton, CA) on the Beckman Coulter DNA sequencer.

To isolate the RNA of leukocytes, blood was collected into PAXgene tubes (Beckton Dickinson, Lincoln Park, NJ). The RNA was purified using the PAXgene blood RNA kit (QIAGEN, Valencia, CA) with the deoxyribonuclease digestion step. Reverse transcription (RT-PCR) was performed on 1 μ g of the total RNA, using 100 U of Moloney murine leukemia virus reverse transcriptase (Invitrogen, Carlsbad, CA), in accordance with manufacturer recommendations. PCR was then performed using 5 μ l of the reverse transcriptase mixture, with the forward primer of exon 1 and reverse primer of exons 10–11 in a total reaction of 50 μ l. Index cases' parents were screened for the identified mutation by either DNA sequencing or, where possible, restriction analysis with the appropriate enzymes. When the mutation was identified as *de novo*; parental origin of the mutated allele was studied through familial informative intragenic polymorphisms [single nucleotide polymorphism (SNP)]: rs2295583 (GenBank accession number) in intron 3 (T/A), rs234629 in intron 6 (G/A), rs7121 in exon 5 (T/C), and rs919196 (T/C) in intron 6. The alleles from paternal and maternal origin were separated by subcloning, as described by Linglart *et al.* (6). After PCR, products were subcloned using the pGEM-T Easy Vectors kit (Promega, Madison, WI). Ten to 16 independent clones were chosen at random and sequenced. Each clone being differentially tagged by familial polymorphism, sequencing or restriction analysis allowed us to determine whether the mutation was on the maternal or paternal allele.

For patient 5 we used a specific strategy: the mutation in exon 1 eliminated the possibility of a *PvuII* restriction site. A large DNA fragment (from nucleotides 30516 to 32058), including the mutation and the informative SNP rs6123837 (G/A) in promoter was amplified using the following primers: GACGAGGAC-GACGCCTACTA and CTGCGGGGGCGCCCTTCGA. PCR product was digested with *PvuII* according to the manufacturer's recommendations. The fragments were separated using gel electrophoresis and then extracted from the gel before finally being sequenced.

Methylation analysis

Exon A/B, NESP55, and XL α s methylation was determined by quantitative PCR assay after digestion of genomic DNA with methylation-sensitive and methylation-insensitive restriction enzyme (22, 23).

Results

Clinical and biological phenotypes

Clinical phenotypes of POH subjects

Our study included 10 patients, five females and five males. The clinical and biological characteristics of the

patients are described in Table 1. All patients had an early age of onset. Patients 3 and 5 developed ossifications at age 3 or 10 yr, respectively, whereas all the remaining cases displayed ossification during infancy. Degree of ossification varied: ossification was severe and impairing (Fig. 1), with extensive and invading lesions in four patients (1, 4, 6, and 10), whereas for four patients (2, 3, 5, 8, and 9), ossifications progressed into deeper tissues but had no impairing characteristics. Lastly, for patient 7 ossifications were superficial, with only cutaneous and sc lesions; they were, however, multiple or widespread. We were unable to give additional information on the evolution for this patient, who was classified as overlap POP/PPHP. Severe intrauterine growth retardation (IUGR; less than the third centile) was reported in eight patients (1, 2, 3, 4, 5, 8, 9, and 10) followed by feeding difficulties and growth retardation during prime infancy. With the exception of patient 6, none of the patients were overweight or showed signs of mental retardation.

Round faces and/or brachymetacarpia were observed in patients 2, 7, and 8. In patient 6 there is a persistent ambiguity between POH and PHP1a because this patient displayed severe, progressive, and impairing sc ossifications, which are associated with Albright's phenotype.

Biological phenotypes of POH subjects

In all cases, again with the exception of case 6, there is an absence of hormonal resistance, with normal levels of calcium, phosphorus, and PTH and, when available, normal TSH value. An Ellsworth-Howard test was performed for patients 7 and 9 showing a normal increase in urinary cAMP. Gs bioactivity is normal or subnormal (between 70 and 93%) in all cases except in family 6 in which it is clearly reduced (52%).

Phenotypes of parents of index cases

For all patients but one (family 7), there were no affected parents or relatives and no family history of ectopic ossification. In family 7, mild sc calcifications were identified in the father of the affected case, as were mild AHO features in the sister and AHO phenotype in the sister's two children. Their referral diagnoses were PPHP for the father and sister and PHP1a for the sister's children (Fig. 2).

GNAS mutations analysis

Seven different heterozygous mutations were identified in POH cases (Table 1 and Fig. 3, *bottom portion*), with the same mutation in exon 1, c.85C>T (p.Q29X), being found in three nonrelated families. Two had never previously been identified in either POH or PHP1a [frameshift mutations c.571_572delGT in exon 7 and c.623_624insT (p.E209X) in exon 8]. Three are new to POH (c.85C>T,

TABLE 1. *GNAS* gene mutations: comparative clinical and biological phenotypes between POH and PHP1a

Mutation	Subject (n)/sex	Age of first symptom/age at diagnosis	Phenotype			Biology					Diagnosis	
			RF-BM-MR	Heterotopic ossification	Age	Ca (mmol/liter) 2.2–2.6	Ph (nmol/liter) 1.1–2.0	PTH (pg/ml) 55 (10–71)	TSH (mIU/ml) 0.5–4.5	Gs-α activity 80–110%		Familial transmission/mutated allele
c.85C>T (p.Q29X) nonsense mutation exon 1	5/M	ND/11 yr	No-no-no	Multiple microSCO (knees, hands, feet) with some ossifications close to muscles	11 yr	2.31	1.65	55 (10–71)	3.2	73	De novo/paternal	POH
				IUGR (<third centile) PN: 11 yr/+4.5 sd/+4 sd	14 yr	2.3	1.8	88	5			
	6/M	PN/1 yr	Yes-yes-no ^a	Multiple, progressive, and impairing SCO (cervical, truncular, arms)	1 yr	2.2	2.1	178	ND	52	De novo/maternal	POH-like PHP1a
				IUGR (10th centile) PN: 2 yr/+3.5 sd/mean								
	9/F	2 yr/52 yr	No-no-no	Multiple microSCO (knees, hands, wrist, buttocks, abdomen, feet) with some ossifications close to muscles	22 yr	Ellsworth-	Howard	Test	Negative ^b		DNA of parents not available	POH
				B: at term/2100/–/– Feeding difficulties PN: 52 yr/60 kg/156 cm	52 yr	2.2	0.6		NI	74		
	D ^c /F	7 yr	Yes-yes-yes	SCO	7 yr	2.2	2.2	155	0.6	ND	Familial/maternal	PHP1a
				PN: 7 yr/+2.72 sd/+1.31 sd Obesity (BMI >99% for age)								
c.139 + 1G>C splicing intron 1	8/F	1 yr/11 yr	No-yes ^d -no	3 superficial and local SCO with extension in deeper tissues	14 yr	2.45	0.98	36 (15–85)	1.7 (0.4–4.4)	70	De novo/paternal	POH
				B: 41/2780/46/33.5 IUGR (third centile) PN: 11 yr/–0.7 sd/–0.5 sd								
	F1/M	4 ^{4/12} yr	Yes-yes-yes	Local SCO (abdomen and knees) and cerebral calcifications	4 ^{4/12} yr	1.7	3.0	398	7.4	67	Familial/maternal	PHP1a
				B: at term/2650/–/– PN: 4 ^{4/12} yr/ +3.5 sd/+0.3 sd (BMI 21.9)	8 yr	2.32 ^e	1.87 ^e	348 ^e	0.9 ^e			
	F2/M	7 1/2 months	No-yes-yes	Numerous inflammatory SCO	7 months	2.4	2.1	25	9.6	60	Familial/maternal	PHP1a
				B: 38.5/2500/44/34 IUGR (third centile) PN: 1 yr/–0.5 sd/–2 sd	4 yr	2.35 ^e	2 ^e	260 ^e	0.2 ^e			(Continued)

TABLE 1. Continued

Mutation	Subject (n)/sex	Age of first symptom/age at diagnosis	Phenotype		Biology						Diagnosis		
			RF-BM-MR	B: term (wk)/W (g)/H (cm)/HC (cm) PN: age (yr)/W (sd)/H (sd)	Heterotopic ossification	Age	Ca (mmol/liter) 2.2–2.6	Ph (mmol/liter) 1.1–2.0	PTH (pg/ml) 63 (10–60)	TSH (mIU/ml) 0.5–4.5		Gs-α activity 80–110%	Familial transmission/ mutated allele
c.345_346insT frameshift mutation exon 5	1/F	At birth	No-no-no	B: 38/1880/43/33 IUGR (third centile) PN: 8 months–4 sd/ –4 sd 2 yr–4.5 sd/ND growth retardation	SCO and muscular severe, extensive, and impairing with hemihypotrophy	10 months	2.6 2.5	2 (1.5–2.2) 1.42 (1.5–2.2)	63 (10–60) 46 (10–60)	4 (0.5–4)	82	De novo/paternal	POH
	A/M	9 months	Yes-yes-yes	PN: 1 yr/+5 sd/ +0.7 sd	SCO	1 yr	2.2	ND	79 (10–65)	5.8	ND	Familial/maternal	PHP1a
	B1/M	7½ months	Yes-yes-ND	B: No IUGR PN: 1 ^{6/12} yr/+1 sd/ –1 sd	Multiple SCO, 10 cm of diameter for the largest	1 ^{8/12} yr	2.6	2.3	149	0.6 ^e	55	De novo/maternal	PHP1a
	B2/M (B1 twin)	7½ months	Yes-yes-ND	B: No IUGR PN: 1 ^{6/12} yr/+1 sd/–1 sd	Multiple microSCO	1 ^{8/12} yr	2.6	2.1	83	0.1 ^e	58	De novo/maternal	PHP1a
c.565_568delGACT frameshift mutation exon 7	2/M	3 months	Yes-yes-no	B: 38/2200/45.5/31 IUGR (third centile) PN: 1½ yr/+1 sd/ +1 sd	Multiple SCO, (largest: 8 cm at 7 months), invading deeper tissues	6 months	2.7	2.1 (1.5–2.2)	26 (10–46)	1.2	84	De novo/paternal	POH
	10/F	4 yr/7 yr	No-no-no	B: 39/2310/46/33 IUGR (third centile) PN: 8 ^{6/12} yr/+0.3 sd/ +0.1 sd	Multiple SCO - (largest 14 × 6.4 cm) invading muscular tissues	7 yr	2.5	1.35 (1.4–1.7)	50 (10–65)	1.5 (0.1–5)	93	De novo/paternal	POH
	C/F	6 yr/27 yr	Yes-yes-no	PN: 27 yr/61 kg/150 cm	SCO	6 yr	1.7	2.1	500	8.9	ND	De novo/maternal	PHP1a
	G/M	ND/2½ yr	Yes-yes-yes	B: 39/4390/49.5 No IUGR PN: 2 ^{9/12} yr/ +3.5 sd/+1 sd	Local frontal SCO, recurrent after surgery	27 yr 2½ yr 2 ^{9/12} yr	1.4	2.35 ^e	85 ^e 600 796 ^e	5.1 ^e	67	De novo/maternal	PHP1a
c.571_572delGT frameshift mutation exon 7	3/M	3 yr/9 yr	No-no-no	B: 40/2200/45/– IUGR (<third centile) PN: 8 ^{9/12} yr/mean/ mean	Extensive SCO (hands and both knees) with extension to quadriceps muscle At 4 yr: 5 × 2.5 cm At 9 yr: 7.5 × 3 cm	4 yr	2.5	1.54	22 (10–70)	0.3	71	De novo/paternal	POH

(Continued)

TABLE 1. Continued

Mutation	Subject (n)/sex	Age of first symptom/age at diagnosis	Phenotype		Biology							Diagnosis
			RF-BM-MR	Heterotopic ossification	Ca (mmol/liter)	Ph (mmol/liter)	PTH (pg/ml)	TSH (mIU/ml)	Gs-α activity	Familial transmission/mutated allele		
c.623_624insT frameshift mutation exon 8	4/M	3 months/5 yr	No-no-no	Widespread dorsal SCO and muscular progressing toward sacrum and costal drill	2.6	ND	50	3.1	87	<i>De novo</i> /paternal	POH	
c.1039-1G>A splicing intron 12	7/F	1 yr/28 yr	Yes-yes-no	Multiple and progressive micro SCO Yes, since 4 months	NI	NI	NI	NI	ND	Familial/paternal	Overlap POH/PPHP	
	E/F	4 months	ND-ND-ND		ND	ND	ND	ND	ND	Familial/maternal	PHP1a	

Parentheses indicate normal values for age. RF, Round face; BM, brachymetacarp; MR, mental retardation; B, birth; PN, postnatal; HC, head circumference; W, weight (sd score); H, height (sd score); SCO, subcutaneous ossifications; ND, not determined; BMI, body mass index; NI, normal.

^a Delayed motor development secondary to high muscular tonus due to cervical calcifications; ^b determination of urinary excretion of cAMP after administration of PTH (Ellsworth-Howard test); ^c Germain-Lee et al. (18); ^d microdactyly in the proband and her father; ^e under treatment.

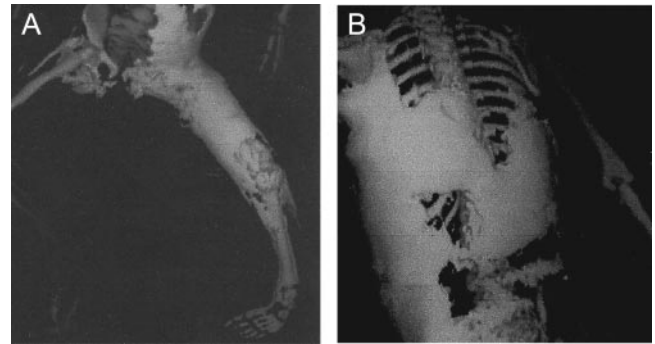


FIG. 1. Whole-body CT of patient 1. Whole-body CT showing extensive ossification in lower limbs (left side; A) and the trunk (B).

c.139+1G>C, c.1039-1G>A), and the other had already been identified in both PHP1a and POH cases in either our laboratory or the literature (c.345_346insT, c.565_568delGACT). All the described mutations predict proteins that have no biological activity, if translated.

Phenotype of matched PHP1a subjects

Eight of the 10 POH patients were matched with PHP1a patients with the same *GNAS* mutations. Their clinical and biological features are displayed in Table 1. In each case (subjects A, B1, B2, C, D, E, F1, F2, G), the AHO phenotype is without ambiguity, with PTH resistance. Interestingly, all these PHP1a patients were described as having sc ossifications, sometimes multiple and extensive (patients B1, F1, and F2). We were unable to obtain sufficient birth biometric data for statistical analyses. However, obesity was a constant feature found in every case during childhood. Gs activity is decreased (range 52–67%) and close to that previously described in PHP1a patients (6).

Intrafamilial transmission of the mutated allele

In eight of the nine investigated POH cases, the affected patient had a *de novo* mutation (Table 1). For family 7, substitution c.1039-1G>A, carried by the proband, was found in the father, who also presented mild ossifications,

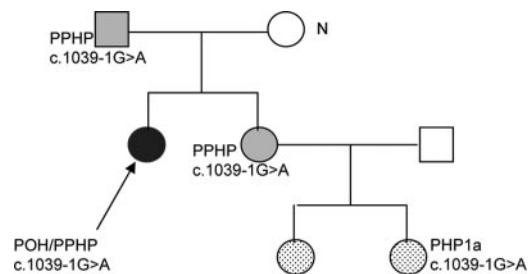


FIG. 2. Pedigree of family 7 with familial case of POH. Squares and circles denote male and female family members, respectively. Solid black symbol indicates members with POH and gray symbol members with PPHP; hatched symbol indicates persons with PHP1a and symbol with N family members with no mutation. Affected patient is indicated by an arrow.

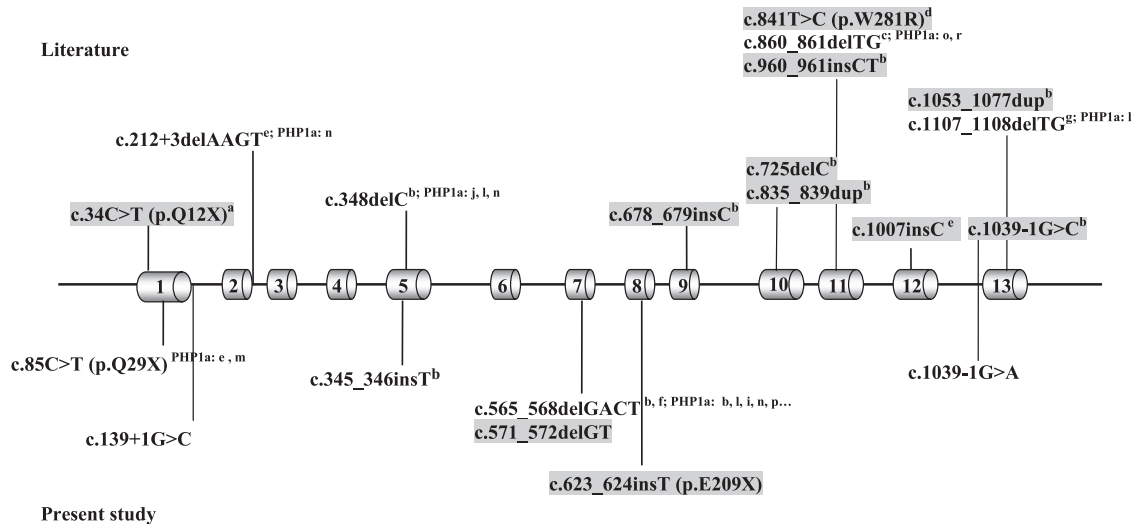


FIG. 3. *GNAS* mutations in POH cases (present study and literature). Schematic representation of the *GNAS* gene: exons are identified by numbers in cylinders. Intronic sequences are represented by straight solid lines between exons. Bottom, Mutations identified in this study; above, mutations reported in the literature in POH. The shaded boxes indicate a mutation that has been identified in a POH case only. Letters indicate author references: a, Eddy (15); b, Shore (2); c, Faust (12); d, Chan (14); e, Long (16); f, Kumagai (45); g, Schimmel (46); i, Yu (47); j, Shapira (48); l, Aldred (49); m, Germain-Lee (18); n, de Sanctis (50); o, Mantovani (51); p, Linglart (6); q, Weinstein (52); r, de Sanctis (53).

and in the subject's affected sister and the sister's children, who were reported to have features of AHO (Fig. 2). In this case, transmission was paternal. In the seven PHP1a matched families, mutations were *de novo* in three cases (twins B1 and B2, C, and G) and were maternally inherited in four cases [A, E, F1, our laboratory results, and D, from the literature (18)].

Segregation analysis in *de novo* cases (Fig. 4)

Eight of the nine POH cases with *de novo* mutation had informative polymorphisms. The inheritance was paternal in families 1, 2, 3, 4, 5, 8, and 10 and maternal in family 6 (Fig. 4A). An example is given for patient 5 with c.85C>T mutation (Fig. 4B): DNA fragment of 1543 bp encompassing the informative SNP rs6123837 (G/A) and the mutation was amplified. PCR product was digested with *PvuII*. Only the normal allele was cut (1432 bp), whereas the mutant was not (1543 bp). The two fragments were sequenced: the normal allele of 1432 bp contains the maternal G polymorphism, whereas the uncut fragment contains the paternal A polymorphism.

In patient 6 we found expression of both normal (paternal) and c.85C>T (maternal) alleles, whereas only the normal maternal allele was expressed in patient 1 (c.623_624insT).

In the *de novo* PHP1a cases, we demonstrated that the mutated allele was maternally inherited.

Methylation pattern

We observed no abnormality in the methylation pattern at the four studied loci (data not shown).

Discussion

To date, about 20 *GNAS* mutations have been reported as associated with POH (2, 4, 11–16) to our knowledge (Fig. 3). All the described mutations predict truncated proteins that have no biological activity if translated, except for the missense mutation p.W281R, which is predicted to induce loss of function (14). They are spread out all along the gene including exon 1 according to the initial observations of Eddy *et al.* (15), who described a p.Q12X mutation in a girl with POH and no hormonal resistance.

We encountered a broad spectrum of heterotopic ossification in POH, ranging from multiple and invading sclerotic lesions (patient 3) to severe hemiacropal ossification (patient 1). We also reported cases of POH/PPHP overlapping syndromes including mild calcifications and some features of Albright's phenotype (patient 7), but these signs are not specific (round shaped face and brachydactyly). There is no specific genotype-phenotype correlation that distinguishes the more severe form from mild extraskelatal ossification. Such variability has already been observed in POH (2, 13, 16, 24). These two diseases may therefore be considered as extreme expressions of the same phenotype, as suggested by Adgebite *et al.* (13).

Five of the *GNAS* mutations identified in our POH patients had already been identified in patients with PHP1a. This raises the question of the parental origin of the mutation. The association between maternal inheritance and PHP1a is well established (5, 6, 25). Shore *et al.* (2), studying intrafamilial transmissions, concluded that

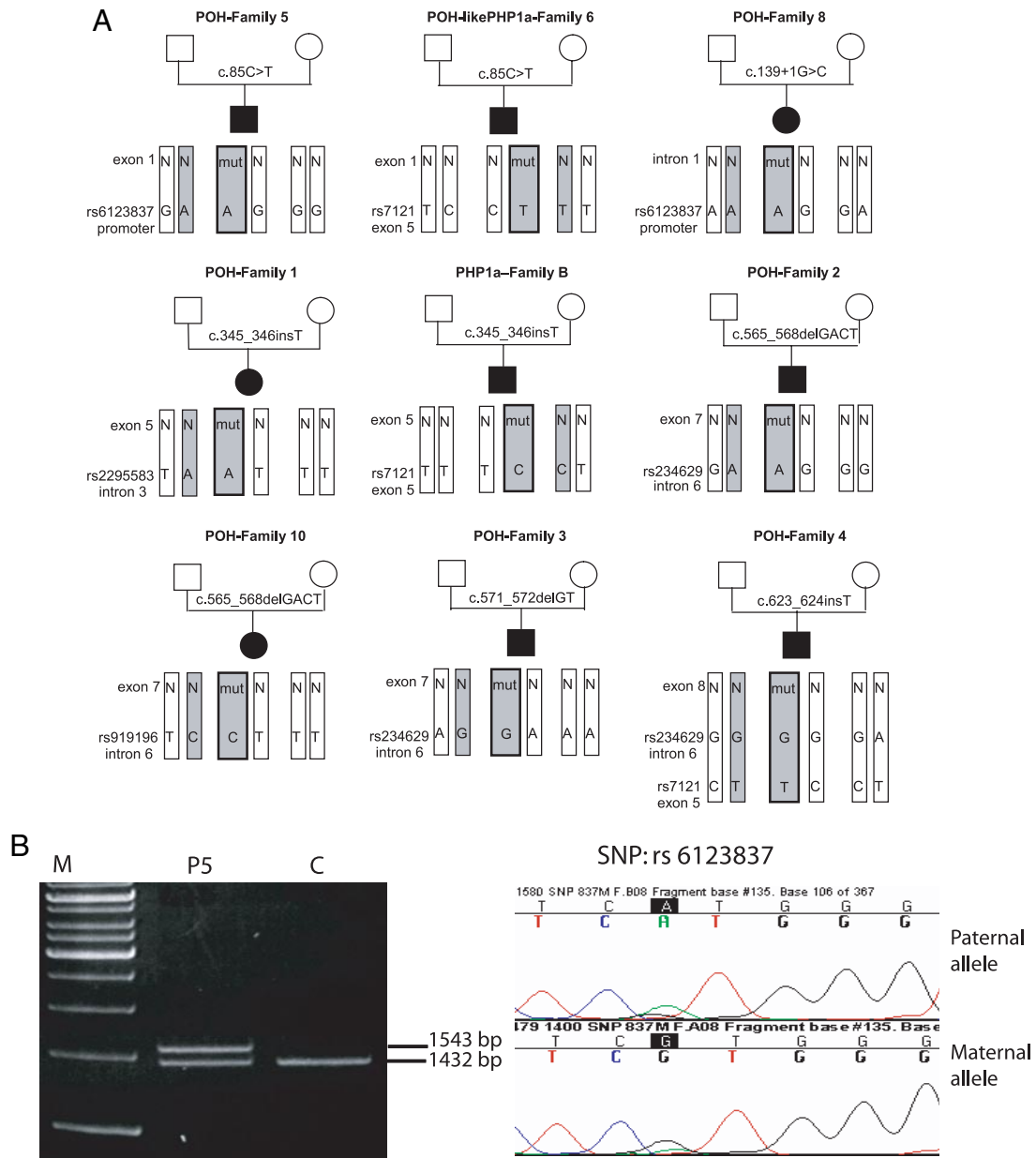


FIG. 4. Segregation analysis in *de novo* cases, identified *GNAS* mutation, and informative SNP associated. **A**, The genomic DNA from proband, including both familial informative SNP and the mutation, was amplified. PCR products were subcloned and 10–12 independent clones were studied by sequencing in each case. Results of sequencing focusing on the locus of *GNAS* mutation and the informative SNP associated are shown in *dotted rectangles*. The mutation is indicated above the proband, and the specific SNPs are listed for each family. *Squares and circles* denote male and female family members, respectively. *Solid symbols* indicate members with POH, and *symbols with N and Mut.*, respectively, normal and mutated *GNAS* allele. **B**, Segregation analysis in patient 5: after amplification, PCR product was digested with *PvuII* and the fragments were separated on gel electrophoresis. The two fragments were extracted from the gel and sequenced. Parts of sequencing electrophoregrams are represented. The G>A polymorphism is shown in *black square*. M, One-kilobase ladder; P5, patient; C, control.

the inheritance of POH was paternal. In the present study, we have clearly demonstrated that in patients with *de novo* mutations, POH is due to inactivating *GNAS* mutations localized on the paternal allele. We compared the ossification process, hormonal resistance, and *Gαs* bioactivity in patients with the same mutation by matching POH/PHP1a cases (Table 1). Ossifications were observed in all cases but are more severe in patients in whom the origin of the mutation is paternal. The possibility remains that re-

cruitment for this study was biased because only the most severe forms of ossification are diagnosed. Indeed, in patient 6, the first diagnosis was POH because of widespread sc ossifications, but further studies clearly demonstrated hormonal resistance and features of AHO and the final diagnosis was POH-like PHP1a. This patient was therefore included as a PHP1a patient for analyses and discussion. Similar cases have already been described in the literature (13, 15, 24, 26–28).

$Gs\alpha$ -dependent processes appear to be involved in the development of mineral deposition, which may not necessarily be linked to alterations in calcium and phosphate metabolism. Lietman *et al.* (29) links the reduction of *Gas* subunit expression to osteogenic differentiation of mesenchymal stem cells and shows that reduced expression of *Gas* can induce an osteoblast-like phenotype as a result of the increased activity of runt-related transcription factor-2 (*Runx2*, an osteoblast-specific transcription factor). Mantovani *et al.* (30) provided evidence for the absence of $Gs\alpha$ imprinting in human bone and suggested that osteodystrophy in PHP1a and PPHP is due to $Gs\alpha$ haplo-insufficiency in bone.

The mutations in patients 5, 6, 9, and possibly 8 are all *Gs* specific, whereas the others affect also XLs expressed from the paternal allele.

In exon 1, the p.Q29X mutation was associated with the following phenotypes: PHP1a (16, 18), PHP1a-POH like (patient 6) when maternally inherited, PPHP (16), or POH (patients 5 and 9) when paternally inherited. In transgenic mice with disruption of exon 1, there is no evidence of heterotopic ossification at 3 months (31), whereas extensive but sc ossifications were evidenced at 12 months with no difference in mice for a maternally or paternally inherited mutation (32). Skeletal abnormalities, skin calcifications, and extraskeletal ossification were also observed in rCre- $Gs\alpha$ mice with homozygous (two alleles) restricted $Gs\alpha$ deletion in exon 1 (33).

The expression of the mutant *GNAS* or other imprinted transcripts from the *GNAS* locus and their mutated protein products or lack thereof could have an impact on the progress of the disease. However, this hypothesis is unlikely because previous studies have shown that mutant *GNAS* are seldom expressed (2). Epigenetic defects at the *GNAS* locus that could account for the asymmetric allelic expression of *Gs* as discussed by Michienzi *et al.* (34) in McCune-Albright syndrome are not identified in this study. The potential impact of an additional mutation in ectopic ossified tissue and the role of a modifier gene, unknown epigenetic modifications, or environmental factors have yet to be explored.

We have also shown that the same *GNAS* mutation can induce different levels of reduction in *Gs* activity, depending on whether the mutation is on the maternal or paternal allele (59 ± 2 and $80 \pm 3\%$, respectively, $P < 0.001$, Fig. 5). A possible hypothesis is that POH cases with the highest *Gs* activity reflect the limitations of the erythrocyte complementation assay used (20, 35). A bias from the fact that adult reference values are used, whereas the subjects are evaluated during early childhood and so do not take into account a potential down-regulation as has been found in mice during the second half of the postnatal period (36) cannot be excluded. Another possibility is that in some tissues such as erythrocytes, XLs has an inhibitory

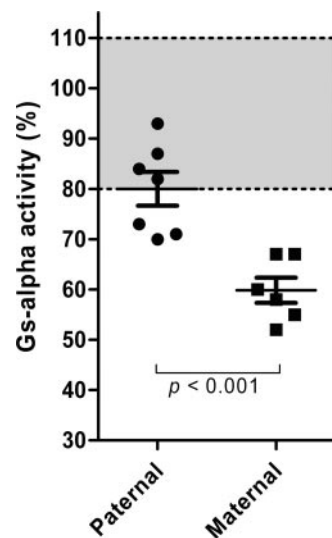


FIG. 5. *Gs* bioactivity according to the parental origin of the mutation. The biological activity of *Gs* protein (*Gs* bioactivity) was quantitatively evaluated in erythrocytes following the procedure described by Marguet *et al.* (20). Results were expressed in percentage of activity of normal adult controls. Raw data and mean \pm SEM are displayed. Normal values are represented by a gray rectangle.

or interfering role in cAMP signaling as found in mice brown adipocytes (37), a role that is lost in patients in whom the XLs mutation is paternally inherited. In contrast, Bastepe *et al.* (38) and Linglart *et al.* (39) demonstrated a cAMP stimulating activity of this protein in another cell type. The possibility of tissue-specific *Gas* imprinting in the erythroblasts should also be considered.

Despite a follow-up of several years in two cases (patients 5 and 9), we found that only a small subset of patients with POH shared multiple features with AHO patients, as observed previously (13–15). The fact that *Gs* activity is subnormal in POH patients could explain why these patients have clinical findings of AHO that are limited to short stature and/or brachymetacarpia.

In this study we clearly demonstrated that severe IUGR is a property of the phenotype, regardless of which mutation is found (14, 15). Of the eight patients for whom this data are available, the observed rate (100%) of IUGR is significantly higher than what would be expected by chance (0.24%). Similar findings have been reported in patients with paternal deletion that include the *GNAS* locus (40). It has been hypothesized from mice models (37, 41) that loss of XLs is the main cause of IUGR. However, patients with specific exon 1 *Gas* mutations (patients 5, 6, 9) are reported with IUGR. We were unable to give additional birth biometric data in PHP1A patients to know whether IUGR is also associated with the presence of ossification.

Finally, our human case study is unable to distinguish between XLs functions and paternal haploinsufficiency of *Gas*, which suggests that in humans, loss of XLs is not dominant over the simultaneous loss of *Gas* derived from

the paternal allele. The key is perhaps neither *Gαs* nor *XLαs* but their impact on other potential contributing genes. The data do nevertheless support further investigation of PPHP for postnatal symptoms insofar as this is feasible and the availability of records allows.

Cases of paternal familial transmission have been reported (2, 42, 43) for POH. For patients who show features of an ambiguous phenotype (extensive and invading ossifications characteristic of POH, associated with features of AHO and PTH resistance), determining the inheritance pattern, in particular in *de novo* cases, is helpful in establishing a more accurate diagnosis and preventing hypocalcemia and hypothyroidism. However, clinical heterogeneity makes genetic counseling extremely delicate, especially in cases of paternal inheritance, which can lead to either a mild expression of the phenotype in PPHP or a severe one in POH. Lietman *et al.* (44) reported one case of preimplantation genetic diagnosis in the context of paternal transmission of a severe case of AHO.

In conclusion, our data have, for the first time, brought forward a human case study that can distinguish between *GNAS* mutation on paternal or maternal allele. The loss of *Gαs* leads to ossification process because they can result from mutations on the maternal or paternal allele. Loss of paternally expressed *XLαs* as well as *Gαs* is associated with severe IUGR. Finally, we reported on a few clinical signs of AHO in POH in which erythrocyte Gs activity is higher than in PPHP1a. This intriguing result requires further investigation, in particular to explore the effects of *XLαs* on cAMP signaling in imprinted tissues.

Acknowledgments

We express our sincere thanks to the staff of all units involved in this study. In particular, we thank the physicians who contributed to collect DNA samples and clinical and laboratory data. We are indebted to the following for their help in the present study: Dr. J.P. Basuyau Laboratory of Clinical Biology and Radioanalysis, Henri Becquerel Center, Rouen; Professor H. Muller (Department of Medical Genetics, Basel University, Basel, Switzerland); Dr. C. Morisot (Shaffner Hospital, Lens); Professor S. Manouvrier (Department of Clinical Genetics, University Hospital Jeanne de Flandre, Lille); Professor J.L. Kuntz and Professor J. Sibilla (Rheumatology, University Hospital Strasbourg). We are grateful to A. Linglart for her very stimulating discussions. We also thank the staff of the Laboratory of Molecular Biology of Centre Hospitalier Universitaire of Caen. Furthermore, we are grateful to M. Pinchassoff (University of Caen) for correction of the English text.

Address all correspondence and requests for reprints to: M. L. Kottler, Centre Hospitalier Universitaire Clemenceau, Département Génétique et Reproduction, Génétique Moléculaire, 14033 Caen cedex, France. E-mail: kottler-ml@chu-caen.fr.

This work was supported by Grant PHRC 05/011 from the Clinical Research Direction of Caen (to M.L.K.).

Disclosure Summary: The authors have nothing to disclose.

References

- Kaplan FS, Craver R, MacEwen GD, Gannon FH, Finkel G, Hahn G, Tabas J, Gardner RJ, Zasloff MA 1994 Progressive osseous heteroplasia: a distinct developmental disorder of heterotopic ossification. Two new case reports and follow-up of three previously reported cases. *J Bone Joint Surg Am* 76:425–436
- Shore EM, Ahn J, Jan de Beur S, Li M, Xu M, Gardner RJ, Zasloff MA, Whyte MP, Levine MA, Kaplan FS 2002 Paternally inherited inactivating mutations of the *GNAS1* gene in progressive osseous heteroplasia. *N Engl J Med* 346:99–106
- Hayward BE, Moran V, Strain L, Bonthron DT 1998 Bidirectional imprinting of a single gene: *GNAS1* encodes maternally, paternally, and biallelically derived proteins. *Proc Natl Acad Sci USA* 95:15475–15480
- Jüppner H 2002 The genetic basis of progressive osseous heteroplasia. *N Engl J Med* 346:128–130
- Weinstein LS, Yu S, Warner DR, Liu J 2001 Endocrine manifestations of stimulatory G protein α -subunit mutations and the role of genomic imprinting. *Endocr Rev* 22:675–705
- Linglart A, Carel JC, Garabédian M, Lé T, Mallet E, Kottler ML 2002 *GNAS1* lesions in pseudohypoparathyroidism Ia and Ic: genotype phenotype relationship and evidence of the maternal transmission of the hormonal resistance. *J Clin Endocrinol Metab* 87:189–197
- Yu S, Yu D, Lee E, Eckhaus M, Lee R, Corria Z, Accili D, Westphal H, Weinstein LS 1998 Variable and tissue-specific hormone resistance in heterotrimeric Gs protein α -subunit (*G α s*) knockout mice is due to tissue-specific imprinting of the *gs α* gene. *Proc Natl Acad Sci USA* 95:8715–8720
- Hayward BE, Barlier A, Korbonits M, Grossman AB, Jacquet P, Enjalbert A, Bonthron DT 2001 Imprinting of the *G(s) α* gene *GNAS1* in the pathogenesis of acromegaly. *J Clin Invest* 107:R31–R36
- Germain-Lee EL, Ding CL, Deng Z, Crane JL, Saji M, Ringel MD, Levine MA 2002 Paternal imprinting of *G α (s)* in the human thyroid as the basis of TSH resistance in pseudohypoparathyroidism type 1a. *Biochem Biophys Res Commun* 296:67–72
- Mantovani G, Ballare E, Giammona E, Beck-Peccoz P, Spada A 2002 The *G α (s)* gene: predominant maternal origin of transcription in human thyroid gland and gonads. *J Clin Endocrinol Metab* 87:4736–4740
- Ahmed SF, Barr DG, Bonthron DT 2002 *GNAS1* mutations and progressive osseous heteroplasia. *N Engl J Med* 346:1669–1671
- Faust RA, Shore EM, Stevens CE, Xu M, Shah S, Phillips CD, Kaplan FS 2003 Progressive osseous heteroplasia in the face of a child. *Am J Med Genet A* 118A:71–75
- Adegbite NS, Xu M, Kaplan FS, Shore EM, Pignolo RJ 2008 Diagnostic and mutational spectrum of progressive osseous heteroplasia (POH) and other forms of *GNAS*-based heterotopic ossification. *Am J Med Genet A* 146A:1788–1796
- Chan I, Hamada T, Hardman C, McGrath JA, Child FJ 2004 Progressive osseous heteroplasia resulting from a new mutation in the *GNAS1* gene. *Clin Exp Dermatol* 29:77–80
- Eddy MC, Jan De Beur SM, Yandow SM, McAlister WH, Shore EM, Kaplan FS, Whyte MP, Levine MA 2000 Deficiency of the α -subunit of the stimulatory G protein and severe extraskelatal ossification. *J Bone Miner Res* 15:2074–2083
- Long DN, McGuire S, Levine MA, Weinstein LS, Germain-Lee EL 2007 Body mass index differences in pseudohypoparathyroidism type 1a versus pseudopseudohypoparathyroidism may implicate paternal imprinting of *G α (s)* in the development of human obesity. *J Clin Endocrinol Metab* 92:1073–1079

17. Kaplan FS, Shore EM 2000 Progressive osseous heteroplasia. *J Bone Miner Res* 15:2084–2094
18. Germain-Lee EL, Groman J, Crane JL, Jan de Beur SM, Levine MA 2003 Growth hormone deficiency in pseudohypoparathyroidism type 1a: another manifestation of multihormone resistance. *J Clin Endocrinol Metab* 88:4059–4069
19. Mamelle N, Munoz F, Martin JL, Laumon B, Grandjean H 1996 [Fetal growth from the AUDIPOG study. II. Application for the diagnosis of intrauterine growth retardation]. *J Gynecol Obstet Biol Reprod (Paris)* 25:71–77
20. Marguet C, Mallet E, Basuyau JP, Martin D, Leroy M, Brunelle P 1997 Clinical and biological heterogeneity in pseudohypoparathyroidism syndrome. Results of a multicenter study. *Horm Res* 48:120–130
21. Kozasa T, Itoh H, Tsukamoto T, Kaziro Y 1988 Isolation and characterization of the human Gs α gene. *Proc Natl Acad Sci USA* 85:2081–2085
22. Bastepe M, Fröhlich LF, Hendy GN, Indridason OS, Josse RG, Koshiyama H, Körkkö J, Nakamoto JM, Rosenbloom AL, Slyper AH, Sugimoto T, Tsatsoulis A, Crawford JD, Jüppner H 2003 Autosomal dominant pseudohypoparathyroidism type Ib is associated with a heterozygous microdeletion that likely disrupts a putative imprinting control element of GNAS. *J Clin Invest* 112:1255–1263
23. Holemon H, Korshunova Y, Ordway JM, Bedell JA, Citek RW, Lakey N, Leon J, Finney M, McPherson JD, Jeddleloh JA 2007 MethylScreen: DNA methylation density monitoring using quantitative PCR. *Biotechniques* 43:683–693
24. Trüb RM, Panizzon RG, Burg G 1993 Cutaneous ossification in Albright's hereditary osteodystrophy. *Dermatology* 186:205–209
25. Rickard SJ, Wilson LC 2003 Analysis of GNAS1 and overlapping transcripts identifies the parental origin of mutations in patients with sporadic Albright hereditary osteodystrophy and reveals a model system in which to observe the effects of splicing mutations on translated and untranslated messenger RNA. *Am J Hum Genet* 72:961–974
26. Gelfand IM, Hub RS, Shore EM, Kaplan FS, Dimeglio LA 2007 Progressive osseous heteroplasia-like heterotopic ossification in a male infant with pseudohypoparathyroidism type Ia: a case report. *Bone* 40:1425–1428
27. Yamamoto Y, Noto Y, Saito M, Ichizen H, Kida H 1997 Spinal cord compression by heterotopic ossification associated with pseudohypoparathyroidism. *J Int Med Res* 25:364–368
28. Riepe FG, Ahrens W, Krone N, Fölster-Holst R, Brasch J, Sippell WG, Hiort O, Partsch CJ 2005 Early manifestation of calcinosis cutis in pseudohypoparathyroidism type Ia associated with a novel mutation in the GNAS gene. *Eur J Endocrinol* 152:515–519
29. Lietman SA, Ding C, Cooke DW, Levine MA 2005 Reduction in Gs α induces osteogenic differentiation in human mesenchymal stem cells. *Clin Orthop Relat Res* 231–238
30. Mantovani G, Bondioni S, Locatelli M, Pedroni C, Lania AG, Ferrante E, Filopanti M, Beck-Peccoz P, Spada A 2004 Allelic expression of the Gs α gene in human bone and adipose tissue. *J Clin Endocrinol Metab* 89:6316–6319
31. Germain-Lee EL, Schwindinger W, Crane JL, Zewdu R, Zweifel LS, Wand G, Huso DL, Saji M, Ringel MD, Levine MA 2005 A mouse model of Albright hereditary osteodystrophy generated by targeted disruption of exon 1 of the Gnas gene. *Endocrinology* 146:4697–4709
32. Huso DL, McGuire S, Germain-Lee EL 2007 Heterotopic subcutaneous ossifications in a mouse model of Albright hereditary osteodystrophy, 89th Annual Meeting of The Endocrine Society, June 2–5, 2007, Toronto, abstract P4–90
33. Castrop H, Oppermann M, Mizel D, Huang Y, Faulhaber-Walter R, Weiss Y, Weinstein LS, Chen M, Germain S, Lu H, Ragland D, Schimel DM, Schnermann J 2007 Skeletal abnormalities and extra-skeletal ossification in mice with restricted Gs α deletion caused by a renin promoter-Cre transgene. *Cell Tissue Res* 330:487–501
34. Michienzi S, Cherman N, Holmbeck K, Funari A, Collins MT, Bianco P, Robey PG, Rimmucci M 2007 GNAS transcripts in skeletal progenitors: evidence for random asymmetric allelic expression of Gs α . *Hum Mol Genet* 16:1921–1930
35. Ahrens W, Hiort O 2006 Determination of Gs α protein activity in Albright's hereditary osteodystrophy. *J Pediatr Endocrinol Metab* 19(Suppl 2):647–651
36. Xie T, Chen M, Gavrilo O, Lai EW, Liu J, Weinstein LS 2008 Severe obesity and insulin resistance due to deletion of the maternal Gs α allele is reversed by paternal deletion of the Gs α imprint control region. *Endocrinology* 149:2443–2450
37. Plagge A, Gordon E, Dean W, Boiani R, Cinti S, Peters J, Kelsey G 2004 The imprinted signaling protein XLAs is required for postnatal adaptation to feeding. *Nat Genet* 36:818–826
38. Bastepe M, Gunes Y, Perez-Villamil B, Hunzelman J, Weinstein LS, Jüppner H 2002 Receptor-mediated adenylyl cyclase activation through XL α (s), the extra-large variant of the stimulatory G protein α -subunit. *Mol Endocrinol* 16:1912–1919
39. Linglart A, Mahon MJ, Kerachian MA, Berlach DM, Hendy GN, Jüppner H, Bastepe M 2006 Coding GNAS mutations leading to hormone resistance impair *in vitro* agonist- and cholera toxin-induced adenosine cyclic 3',5'-monophosphate formation mediated by human XLAs. *Endocrinology* 147:2253–2262
40. Geneviève D, Sanlaville D, Faivre L, Kottler ML, Jambou M, Gosset P, Boustani-Samara D, Pinto G, Ozilou C, Abeguilé G, Munnich A, Romana S, Raoul O, Cormier-Daire V, Vekemans M 2005 Paternal deletion of the GNAS imprinted locus (including Gnasxl) in two girls presenting with severe pre- and post-natal growth retardation and intractable feeding difficulties. *Eur J Hum Genet* 13:1033–1039
41. Plagge A, Kelsey G, Germain-Lee EL 2008 Physiological functions of the imprinted Gnas locus and its protein variants G α (s) and XL α (s) in human and mouse. *J Endocrinol* 196:193–214
42. Fawcett HA, Marsden RA 1983 Hereditary osteoma cutis. *J R Soc Med* 76:697–699
43. Urtizberea JA, Testart H, Cartault F, Boccon-Gibod L, Le Merrer M, Kaplan FS 1998 Progressive osseous heteroplasia. Report of a family. *J Bone Joint Surg Br* 80:768–771
44. Lietman SA, Goldfarb J, Desai N, Levine MA 2008 Preimplantation genetic diagnosis for severe Albright hereditary osteodystrophy. *J Clin Endocrinol Metab* 93:901–904
45. Kumagai K, Motomura K, Egashira M, Tomita M, Suzuki M, Uetani M, Shindo H 2008 A case of progressive osseous heteroplasia: a first case in Japan. *Skeletal Radiol* 37:563–567
46. Schimmel RJ, Pasmans SG, Xu M, Stadhouders-Keet SA, Shore EM, Kaplan FS, Wulffraat NM 2010 GNAS-associated disorders of cutaneous ossification: two different clinical presentations. *Bone* 46:868–872
47. Yu S, Yu D, Hainline BE, Brener JL, Wilson KA, Wilson LC, Oude-Luttikhuis ME, Trembath RC, Weinstein LS 1995 A deletion hotspot in exon 7 of the Gs alpha gene (GNAS1) in patients with Albright hereditary osteodystrophy. *Hum Mol Genet* 4:2001–2002
48. Shapira H, Mouallem M, Shapiro MS, Weisman Y, Farfel Z 1996 Pseudohypoparathyroidism type Ia: two new heterozygous frameshift mutations in exons 5 and 10 of the Gs alpha gene. *Hum Genet* 97:73–75
49. Aldred MA, Trembath RC 2000 Activating and inactivating mutations in the human GNAS1 gene. *Hum Mutat* 16:183–189
50. De Sanctis L, Romagnolo D, Olivero M, Buzi F, Maghnie M, Scire G, Crino A, Baroncelli GI, Salerno M, Di Maio S, Cappa M, Grosso S, Rigon F, Lala R, De Sanctis C, Dianzani I 2003 Molecular analysis of the GNAS1 gene for the correct diagnosis of Albright hereditary osteodystrophy and pseudohypoparathyroidism. *Pediatr Res* 53:749–755
51. Mantovani G, Romoli R, Weber G, Brunelli V, De Menis E, Beccio S, Beck-Peccoz P, Spada A 2000 Mutational analysis of GNAS1 in patients with pseudohypoparathyroidism: identification of two novel mutations. *J Clin Endocrinol Metab* 85:4243–4248
52. Weinstein LS, Gejman PV, de Mazancourt P, American N, Spiegel AM 1992 A heterozygous 4-bp deletion mutation in the Gs alpha gene (GNAS1) in a patient with Albright hereditary osteodystrophy. *Genomics* 13:1319–1321
53. de Sanctis L, Vai S, Andreo MR, Romagnolo D, Silvestro L, de Sanctis C 2004 Brachydactyly in 14 genetically characterized pseudohypoparathyroidism type Ia patients. *J Clin Endocrinol Metab* 89:1650–1655